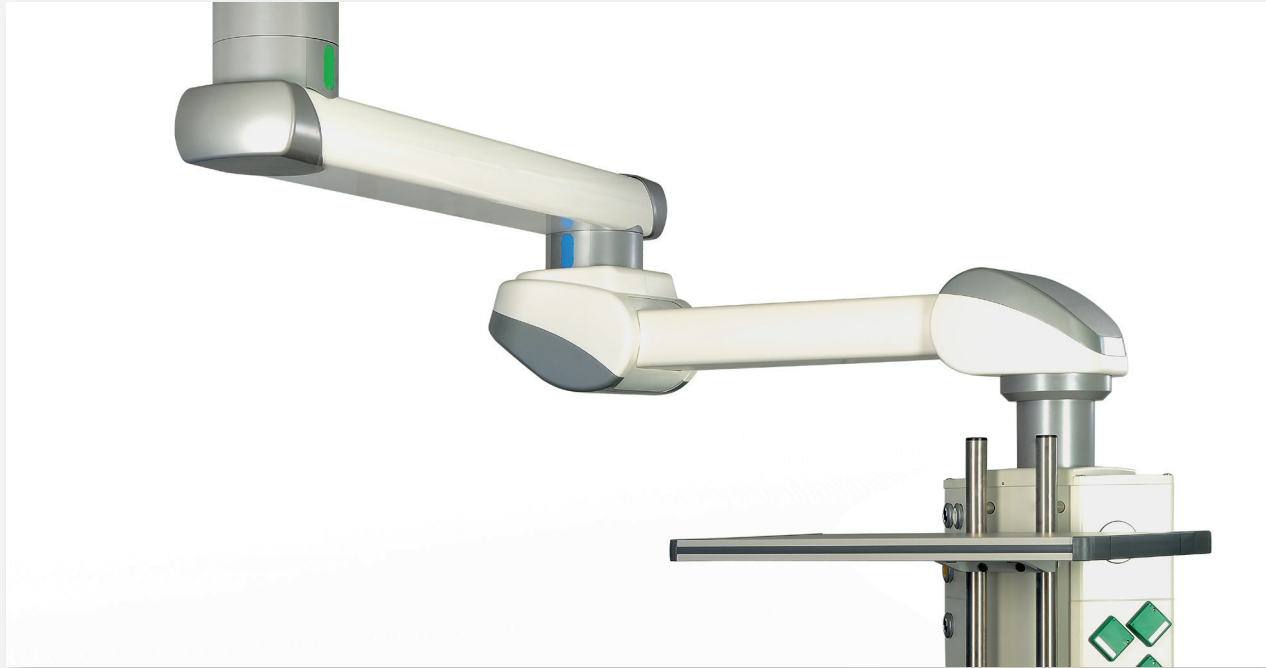




Navigator™

Equipment Management System





Navigator™

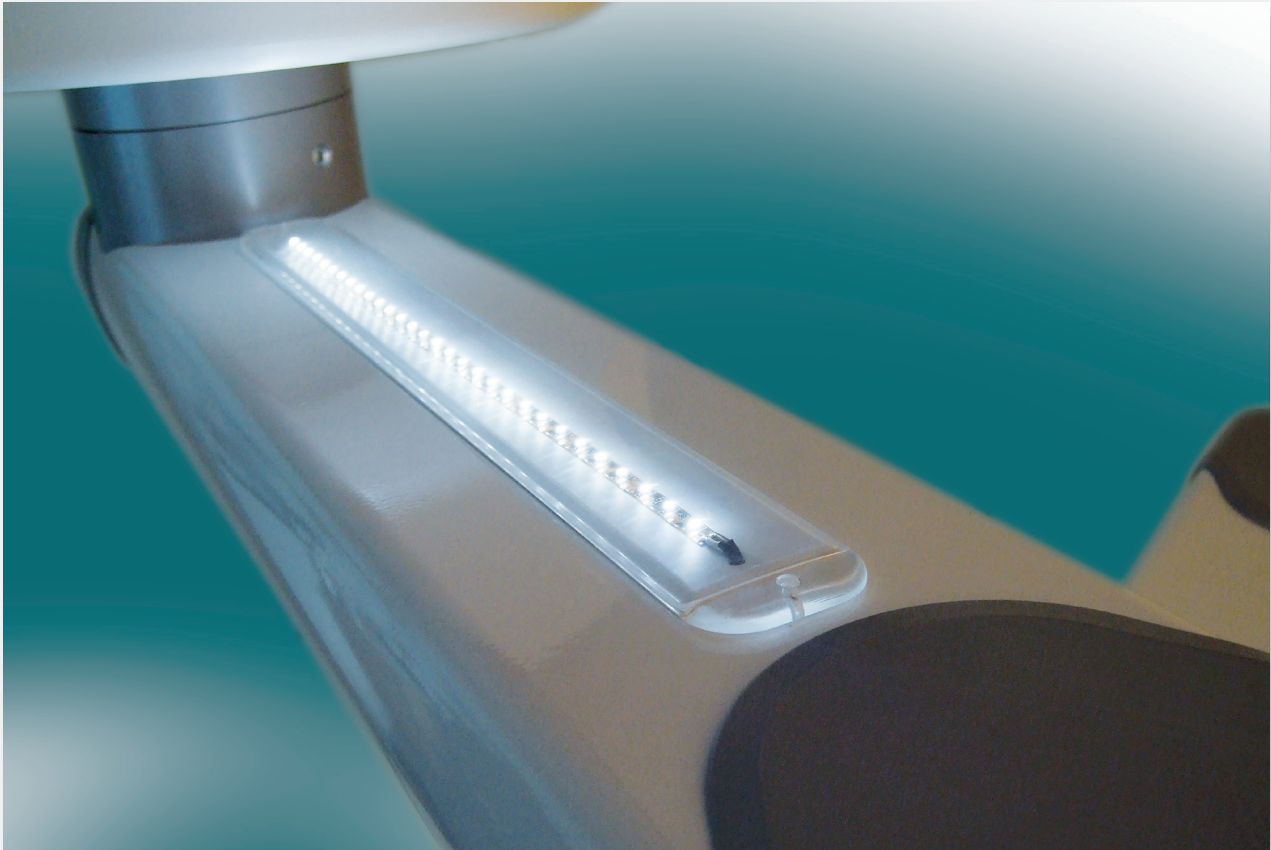
Equipment Management System

The Navigator is a ceiling supply unit designed for a flexible and orderly workflow that meets the needs of both patients and nursing staff. Each Navigator can be configured to meet the specific equipment needs of each care environment. For surgical teams, every minute matters, which is why optimizing your OR is critical. The Navigator allows equipment to be precisely positioned and easily stowed while not in use. Power cords, data cables, and gas lines are all

integrated to eliminate trip and snag hazards. The Navigator Equipment Management System is a modular system that can be outfitted with a spring arm for monitor carriers or motorized arms for equipment pendants. Each Navigator unit is uniquely assembled to meet the specific equipment needs of our customers. The Navigator Equipment Management System is designed for use in the OR, ICU, ER, and patient rooms.

Applications

- Operating Room
- Pre & Post OR rooms
- Intensive Care Units
- Patient Rooms
- Emergency Rooms



Key Navigator™ Features

Modularity:

- Configure The Navigator™ Equipment Management System with the devices your facility needs.
- Position equipment where it is needed with ease to optimize your space.

Integration:

- The Navigator™ integrates power and data cables internally.

Flexibility:

- The Navigator™ Equipment Management System is versatile enough to meet the needs of any environment in your healthcare facility.

Intuitive E-Brake System:

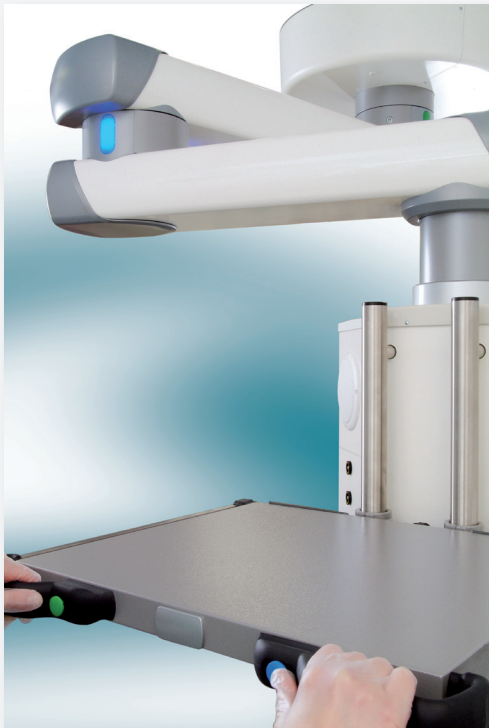
The Navigator has the most innovative bearing unit for ceiling-mounted supply units. Loads of up to 2,204 lbs. (1,000 kg) can be moved with ease once the electronic braking system is released. The Navigator's E-Brake keeps the system safely in position even in the event of a loss of power. The E-Brake system also features colored LEDs that signal which break has been released to eliminate accidental movements. The E-Brake System on the Navigator does not require compressed air like other systems and, as a result, requires zero maintenance.

Innovative Integration:

Cable management is always a struggle in modern healthcare. The Navigator integrates cables and wiring internally with ample space for the addition of current and future supply lines. The Navigator also features the first sound system approved for medical applications. Four integrated speakers or an optional spherical speaker can be included. An iPod or MP3 player can be connected via the docking station and is controlled via an infrared remote. The Navigator also includes dimmable LED lights as an orientation aid for the OR during minimally invasive and laparoscopic surgeries.

Cleaning Made Easy:

The Navigator Equipment Management System is designed with high hygiene standards in mind. Bolt fittings are located on the interior of the device, allowing for smooth exterior surfaces that are easy to clean, allowing you to maintain a high standard of hygiene.





The Service Head

The Navigator Service Head features six modules which can be configured with a Gas Module, Electrical Module, a Multi-Function Rack, Infusion Modules and shelves with or without drawers. The service head can also be outfitted with four integrated speakers or an optional spherical speaker. An iPod or MP3 player can be connected via the docking station and is controlled via an infrared remote. The Service Head can easily be moved by releasing the Navigators E-brake system by interacting with the release handles.

The Service Head can be fitted with a lifting system to assist with moving anesthetic machines and endoscopy carts. Solid shelves with an extruded aluminum profile can be positioned on the front and back sides of the Service Head. The shelves support a maximum load of 176 lbs. or 80kg at a tilt no greater than 1°. Operating handles can be ergonomically arranged with membrane buttons for comfortably operating

the pendant system. The Service Head securely runs off of a low voltage of 24 volts and features edge protection.

Service heads also have a cable channel guide that allows for the stowing of excess cable between shelves, available from the manufacturer upon request.

For every 8" or 200mm in length your Navigators Service Head can be configured with the following.

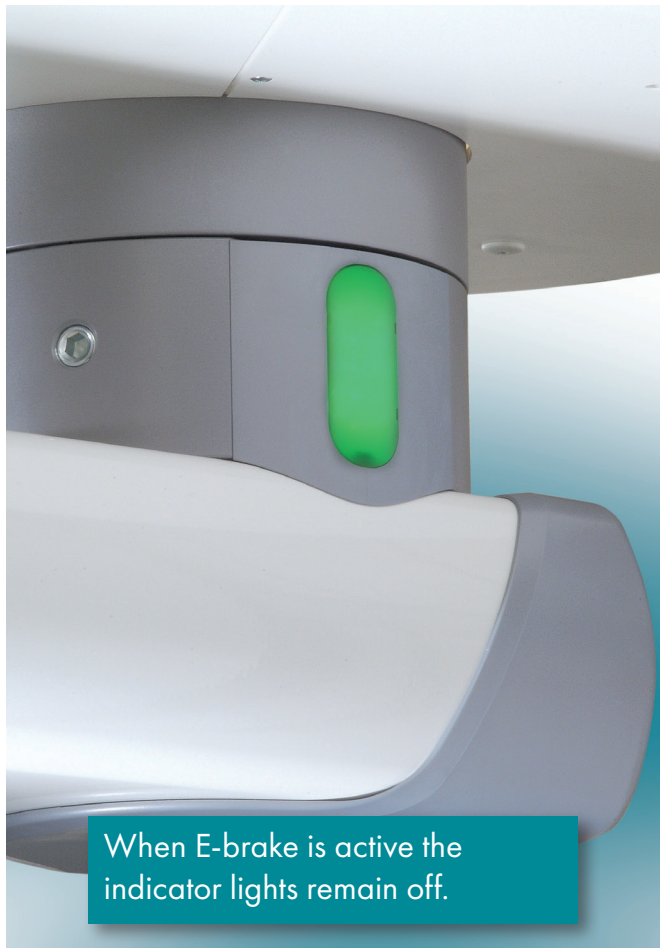
- Up to 4 gas outlets & up to 6 duplex electrical outlets.
- Up to 8 gas outlets only.
- Up to 12 duplex electrical outlets only.



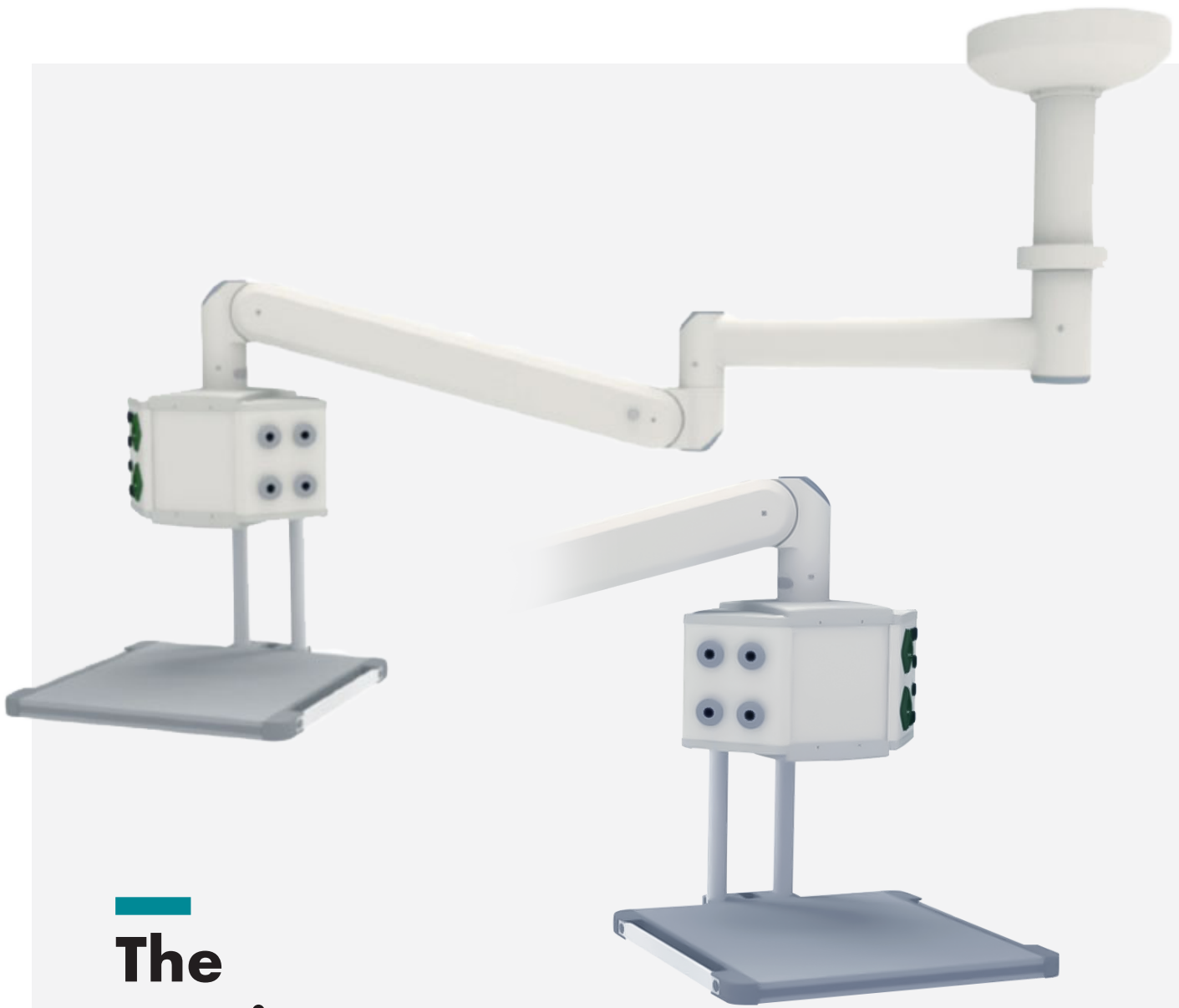
The Service Head can easily be moved by depressing the release buttons for the Navigators E-brake system.



Indicator lights illuminate once the E-brake release is engaged.



When E-brake is active the indicator lights remain off.



The NaviPort



The NaviPort is a medical supply unit that provides power and gas to medical equipment via spring arm. The NaviPort can easily be positioned with one hand because of its internal balancing spring. The NaviPort can easily be lowered to connect lines or equipment and moved out of the working space to a horizontal parked position.

The NaviPort can also be equipped with optional "SurroundLED" lights to aid safe navigation in dark work environments. Just like other Navigator devices, the NaviPort features a smooth exterior for easy cleaning.



Monitor Carrier

The Navigator can also be outfitted with imaging systems for radiology, cardiovascular investigations, hybrid operating rooms, and endoscopic surgeries. Configurations from 1 to 8 medical monitors or large screen monitors are supported. The Navigator allows the monitors to be placed and angled to meet the specific needs of the surgical team. Once in place, the monitors remain stable and fixed until moved. Like all other Navigator configurations, all cables are self-contained within the Navigator to provide not only a clean and orderly workspace but a safe one.

Technical Specs

Navigator:

Payload:

Boom: up to 2,204 lbs / 1,000 kg
Lift: up to 551 lbs / 250 kg

Reach:

Max Length: 2,600mm

- Length of second extension arm: 23.62" - 62.99" / 600 - 1,600 mm
- Length of motor or spring arm: 39.37" / 1,000 mm

Height:

7.87" / 200 mm Steps from 7.87" - 39.37" / 200 - 1,000mm

Rotation:

340°

Brake:

E-Brake

NaviPort:

Length:

- Spring Arm: 1,010mm
- Extension Arm: 600; 800; 1,000; 1,200mm

Type:

Height adjustable supply unit consisting of:

- Ceiling mounted spring arm with extension arm and M6 Service Head
- Ceiling mounted spring arm with M6 Service Head

Spring Versions:

8-16 kg | 15-32 kg | 30-45 kg | 45-57 kg

Payload Shelf:

Max. 32 kg, depending on configuration

Other standards on request

Standards Data Outlets:

LEGRAND Data modules for CAT 6, CAT 6A, BNC, DVI, HDMI, etc. Other standards on request***

Optional Adapter on Navigator for ACROBAT 2000 and ACROBAT Swing:

For versions with NaviPort attached to the Navigator extension arm in lengths of 32" and 40" / 800 and 1,000 mm.

Brake Type:

Friction via brake screw at the pivots

Rotating Range:

340°

Stop:

Protection for internally routed supply lines and hoses

- Single system: Position of stop is set during installation of the ceiling tube 8 positions in steps of 45
- Dual system: Adjustable stop 24 positions in steps 15

Up and Down Movement:

- Naviport 8-16kg, 15-32kg, 30-45kg:
40° upwards | 40° downwards
- Naviport 45-57kg: 28° upwards | 40° downwards

Electrical Protection Class According to IEC 60601-1:

Class I

IP Classification According to IEC 60529:

IP 20

Mark of Conformity:

CE mark

Visit
[NuvoSurgical.com](https://www.NuvoSurgical.com)
For More
Information

Service Head:

Load Capacity:

Max 370 lbs / 168 kg

Load Capacity Per Shelf:

Max 176 lbs / 80 kg (Maximum tilting of the shelf 1°
with 176 lbs / 80 kg and centered load)

Test Symbol:

UL (standard versions)

Mark of Conformity:

CE

Medical Product:

Class IIb according Council Directive 93/42/EEC
concerning medical devices



NUVO a division of Medical Illumination
19749 Dearborn Street
Chatsworth, CA 91311

Phone: (814) 899 4220
Email: Sales@NuvoSurgical.com
www.NuvoSurgical.com