



umano**medical**

**MAX-SECURE™
FURNITURE SERIES**

**Safe and Durable Furniture
for Behavioral Health Environments**



MAX-SECURE™ FURNITURE SERIES

Patient Room Furniture

Designed for their **high safety level** and **prolonged performance**, the Max-Secure furniture series will allow patients and staff to feel **safe and comfortable** while spending time in their rooms.

Manufactured using **Herculite Polymer Composite**, the Max-Secure furniture series features a **seamless smooth surface that is easy-to-clean**, durable, and will **withstand continuous use in any healthcare environment**.

KEY FEATURES

- Maintenance-free one-piece construction with no exposed fasteners
- Herculite Polymer Composite is durable, anti-microbial, and impact resistant
- Resists carving or scratching
- Designed to prevent injury to self or others
- No space for concealment
- Can be ballasted to prevent lifting or throwing

FURNITURE - AVAILABLE COLORS

STANDARD COLORS

The Max-Secure Furniture Series is offered in calm colors to help ease the minds of patients and contribute to a more serene environment. Colors offered vary for each product.



C101
Ash Gray



C117
Desert Sand



C104
Russet Brown



C132
Pewter Gray

OPTIONAL COLORS*

Optional colors are available to match your decor.

Color palettes vary for each product. Refer to complete product descriptions for color options.



C109
Forest Green



C113
Steel Blue



C130
Onyx Black



C131
Sandstone



C134
Poseidon



C135
Marsala

*Delivery lead times may vary. Minimum quantities may apply.

MAX-SECURE™ FURNITURE SERIES

Patient Room Furniture

PATIENT ROOM FURNITURE PRODUCTS



NIGHTSTAND ES 4000-17

Provides patients with ample room to store their personal effects within the confines and privacy of their rooms.

Dimensions 22.5" W x 21.5" D x 23" H
Weight 25 lb (12 kg)

Available Colors



2 SHELF STORAGE UNIT EN 6000-7

A shelving system that is secure, durable, and easy-to-clean.

Dimensions 13.5" D x 30" W x 35" H
Weight 40 lb (18 kg)

Available Colors

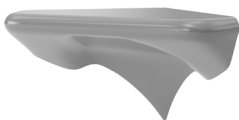


4 SHELF STORAGE UNIT EN 6000-8

Upgrade patient storage to a larger 4 shelf storage unit and allow them to store their personal effects within the confines and privacy of their rooms.

Dimensions 11.5" D x 30" W x 60.5" H
Weight 80 lb (36 kg)

Available Colors



CORNER MOUNTED DESK EN 6000-16

Offers patients a secure and durable writing and storage surface within the confines and privacy of their rooms.

Dimensions 18.25" D x 25.44" W x 13.55" H
Weight 22 lb (10 kg)

Available Colors



MAX-SECURE™ FURNITURE SERIES

Patient Room Furniture



WALL MOUNTED DESK EN 6000-9

Offers patients a secure and durable writing and storage surface within the confines and privacy of their rooms.

Dimensions 18.25" D x 35.3" W x 14.47" H

Weight 22 lb (10 kg)

Available Colors



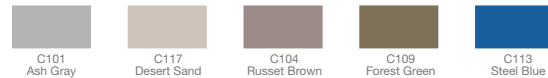
ROUND STOOL EN 6000-11

Durable stools will allow patients to comfortably do work and relax in the confines of their own rooms while maintaining the safety and security of your facility.

Dimensions 15" W x 18" H

Weight 22 lb (10 kg)

Available Colors



WALL MOUNTED BENCH EN 6000-13

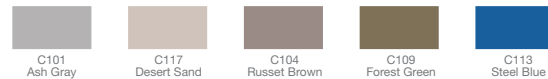
The wall mounted bench offers additional seating space for common areas and is designed to withstand continuous use.

Dimensions 15" D x 11" H x length* as required

* length between 48" - 108" in 12" increments

Weight 45 lb (20 kg) per 4 ft section

Available Colors



MAX-SECURE™ FURNITURE SERIES

Chairs & Tables

Secure, durable, and styled to meet current furniture trends, the Max-Secure chairs and tables are proven to withstand continuous use and provide comfort for patients.

- Maintenance-free one-piece monolithic construction
- Herculite Polymer Composite is durable, anti-microbial, and impact resistant
- No exposed fasteners, no space for concealment
- Resists carving or scratching
- Can be ballasted to prevent lifting or throwing

CHAIRS

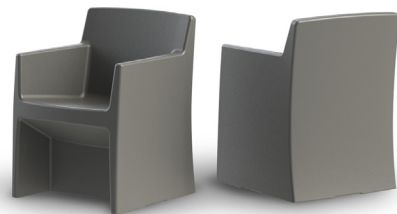
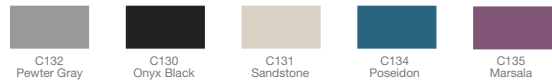


ARMLESS CHAIR ES 4000-3

The armless chair is designed to make patient rooms feel more like living areas and is proven to withstand continuous use.

Dimensions 23" D x 19" W x 31.5" H (17.5" seat height)
Weight 18 lb (8 kg)

Available Colors



ARMCHAIR ES 4000-4

Secure, durable, and styled to meet current furniture trends, the armchair provides comfort for patients.

Dimensions 23" D x 23" W x 31.5" H (17" seat height)
Weight 22 lb (10 kg)

Available Colors



MAX-SECURE™ FURNITURE SERIES

Chairs & Tables

TABLES



TABLE ES 4000-1

This top-of-the-line table will allow patients to spend time in common areas while your facility's valuable safety and security will be upheld.

Dimensions 42" W x 42" L x 29" H

Weight 113 lb (51.3 kg)

Available Tabletop Colors



Table Base Color



EXTENDED TABLE ES 4000-1D

Seats up to six chairs comfortably.

Dimensions 42" W x 74.5" L x 29" H

Weight 226 lb (102.5 kg)

Available Tabletop Colors

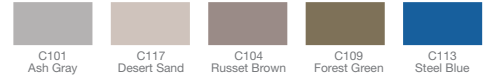


Table Base Color



GAMES TABLE ES 4000-1G

Patients can use this games table to play a variety of board games, adding a level of comfort which elevates your institution's day rooms to feel more like living areas.

Dimensions 42" W x 42" L x 29" H

Weight 113 lb (51.3 kg)

Available Tabletop Colors

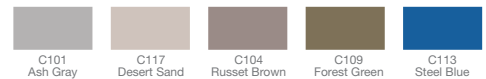


Table Base Color



MAX-SECURE™ FURNITURE SERIES

TECHNICAL SPECIFICATIONS

Flammability	California No.133 UL94	Flammability Test Procedure for Seating Furniture Standard for Safety of Flammability of Plastic Materials
Installation	Freestanding or secured in place with structural mounting system Call for a quotation for complete installation from our factory-trained technicians	

Specifications can change without notice.

Umano Medical is the authorized distributor for the MAX-SECURE Platform Bed and Furniture Series manufactured by Max-Secure Systems Inc.

RELATED PRODUCTS



MAX-SECURE PLATFORM BED



MAX-SECURE PLATFORM BED
WITH 8-POINT RESTRAINTS



MAX-SECURE PLATFORM BED
WITH RESTRAINT BARS



MAX-SECURE PLATFORM BED
WITH STORAGE POCKETS



umanomedical

Toll free number: 1 844 409-4030

umanomedical.com