

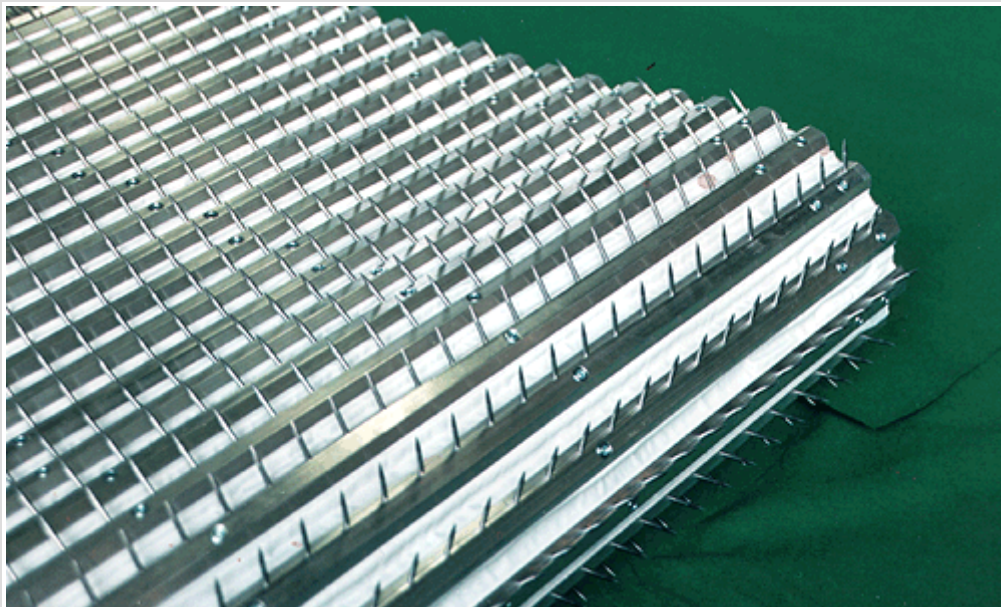
Machine Ref: A1-GEK106
Description: Spiked Lattice PA S2411
Manufacturer: German

Spiked Lattice PAS2411

General

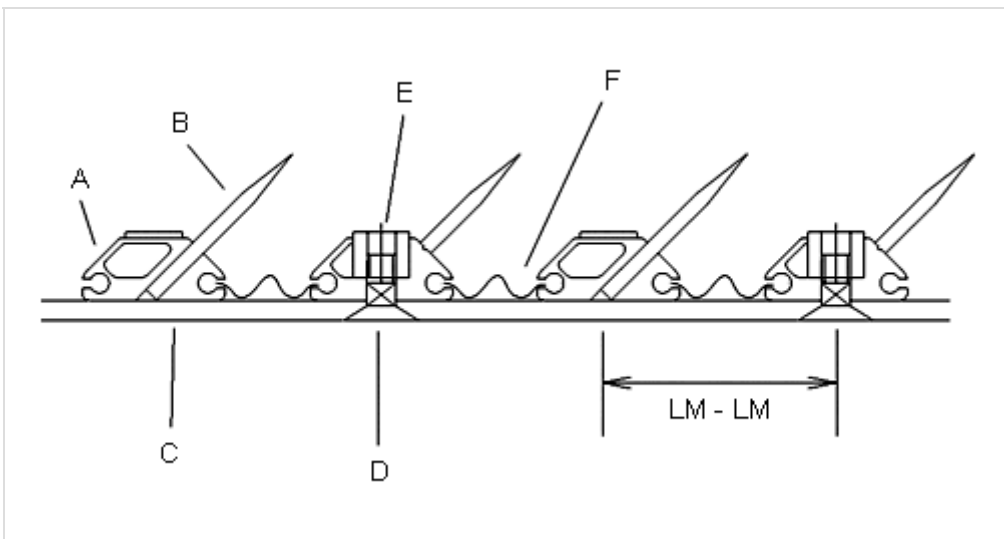
The aluminium profile PAS2411 was specially developed for use with hopper feeders and milling cutters. The spiked lattices manufactured in this manner can be equipped with reliable polychrome belts as well as with toothed belts, based on application and load situation. The latter makes it possible to install a geared drive in connection with toothed wheels. This prevents belt slipping.

Advantages



Advantages

- Durability
- Very stable lattices and spikes
- Quality workmanship
- Problem-free replacement of laths in mounted condition
- Geared drive optional
- Smooth surface makes cleaning easier when changing batches



Description

A very durable and easy to maintain spiked lattice belt has been created using this system. This has been achieved by the following details:

- The aluminium lattice PAS2411 (sketch: A) with a cross section of 24.4 x 11 mm offers a smooth surface. The profile was designed as a hollow core to reduce the weight. However, the profile is still solid at pin positions. This assures that the spikes have a good hold in the lath. The distance from the lath centre to lath centre is 40 mm or 46 mm as a standard. Other pitches are available on request. To prevent tarnishing of the aluminium, the laths can be equipped with an anodized surface.
- The laths are fastened using galvanized screws M5 (D) and special hardened steel bolts (E).
- The pins (B) with standard sizes of No. 10 x 1 3/8" (3.35 x 35 mm), 11 x 1 5/8" (2.95 x 41.3 mm) and No 12 x 1 3/8" (2.62 x 35 mm) are pressed into precisely drilled holes. The pins can also be permanently protected from corrosion. The pin angle is 45 degrees.
- The belts are available in a selection of materials and designs (C):
 - Polychrome belts; with leather coated polyamide cores, the screw heads are sunk into leather. Width as chosen individually.
 - Toothed belts for shaft diameters > 300 mm. 50 mm wide polyester belts reinforced with special fibres. Large teeth (D), connected by screws to the belts and laths, assure the additionally necessary frictional connection.
 - Toothed belts for shaft diameter < 300 mm are equipped with non-driven intermediary teeth. These ensure low noise and low wear operation, even for small shaft- or wheel diameters.
- The polyester web straps (F) seal the gaps by their insertion between the lattices. Woven plastic threads make them absolutely resistant to removal. Strap removal is prevented by pressing the channels together at lath end.
- The endless connection in the machine is an overlapping junction of the belts over 3 or 4 laths and is made by screw connection.