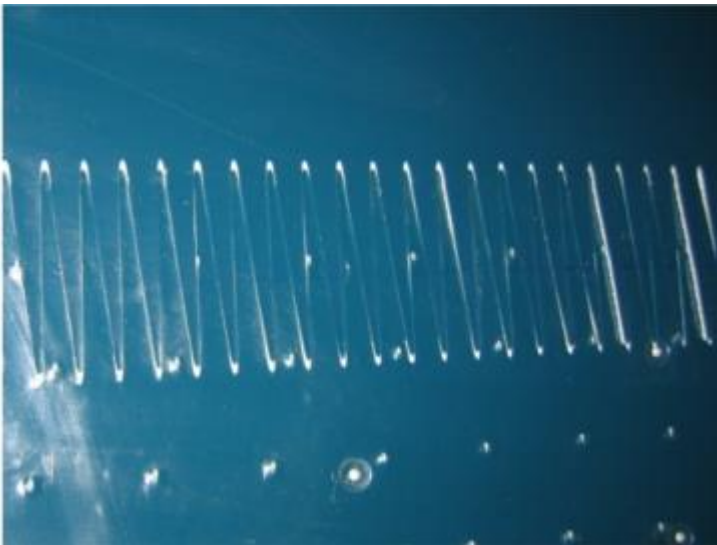


Machine Ref: A3-GKO102
Description: Lattice Parts - Endless Connection
Manufacturer: German

PVC coated polyester belts fundamentally offer the same endless connection possibilities as do the other belts.

1. Endless Connection



The same applies to the other belts in terms of durability. For the endless connection, the belt has finger formed and layered cut-outs. The layers are then overlapped and welded together i. e. joined together by melting the material. Upon request, the belt ends can also be cut at a slant and then welded. This enables the endless connection to be spread over a greater length.

2. Overlapping connection

An overlapping connection is not normally used for Transition belts because an overlap only makes sense for belts where the laths are mounted in the belt top side. For the spiked lattices with laths mounted on the inside and spiked throughout the belt, an overlapping connection is only possible where there are no spikes.

3. Clamp fasteners



If the Transition belt cannot be installed in the machine endlessly, a hinge connection should be chosen. Two hinge-type metal strips are attached to the belt ends and the endless connection formed by inserting a wire.

4. Hook Connection

Transition belt can be equipped with wire hook connections. These consist of very fine wires which can be additionally cased in the covering. This has the advantage that the connection point is well sealed but not as well as otherwise and therefore cannot be used for spiked lattices.