

# Automatän

**LOAD TURNERS**

**Superior  
by Design**



**SIMPLE, FAST, AND EFFICIENT MATERIAL HANDLING**

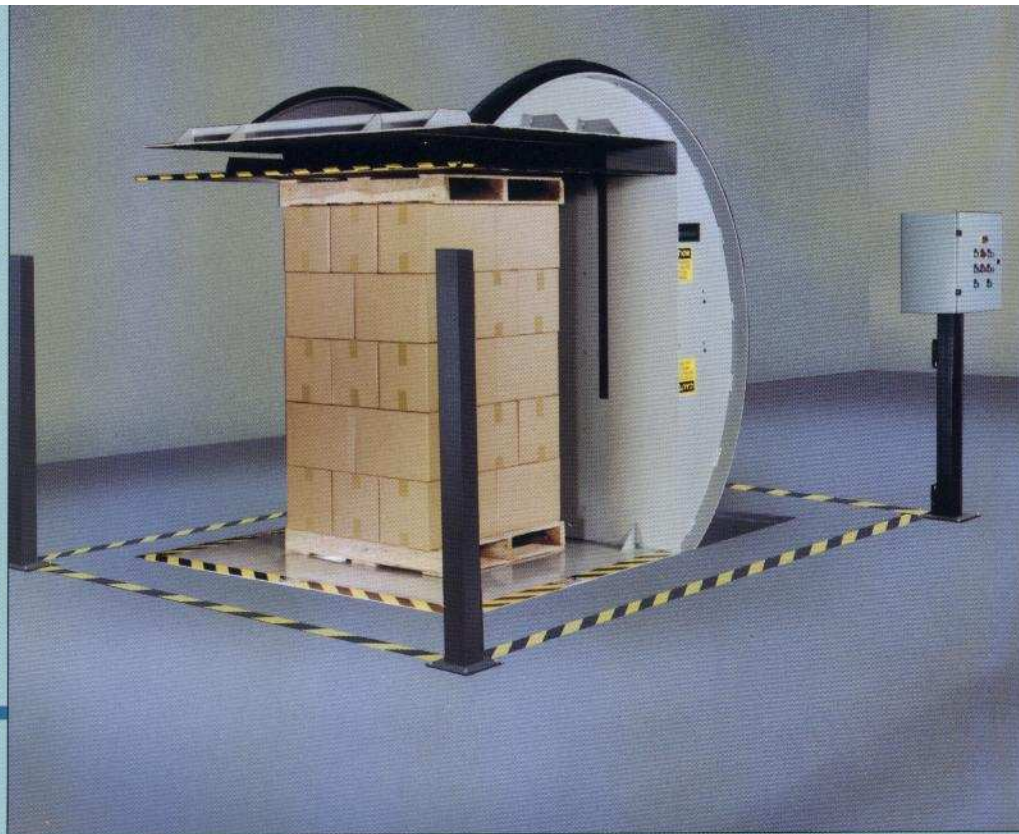
# Automatän

*Innovative load turning equipment for the material handling industries.*

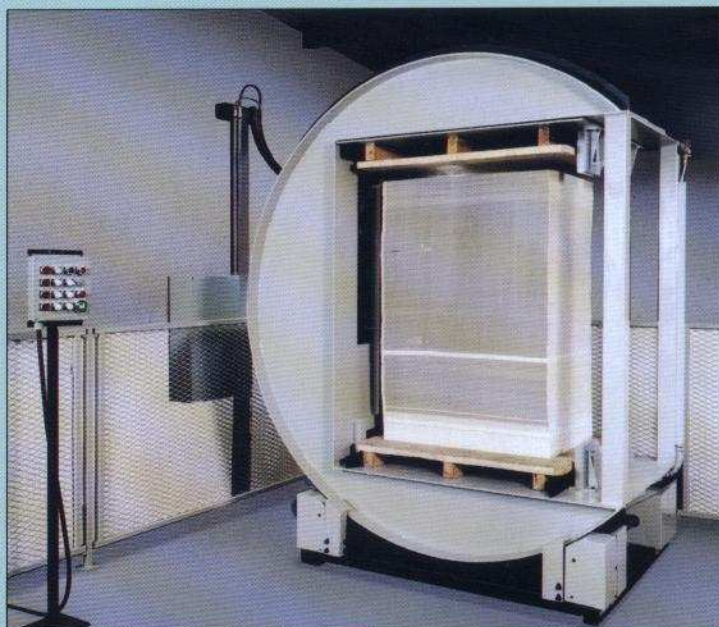


## ***Fast, easy, one person handling of pallet-sized loads.***

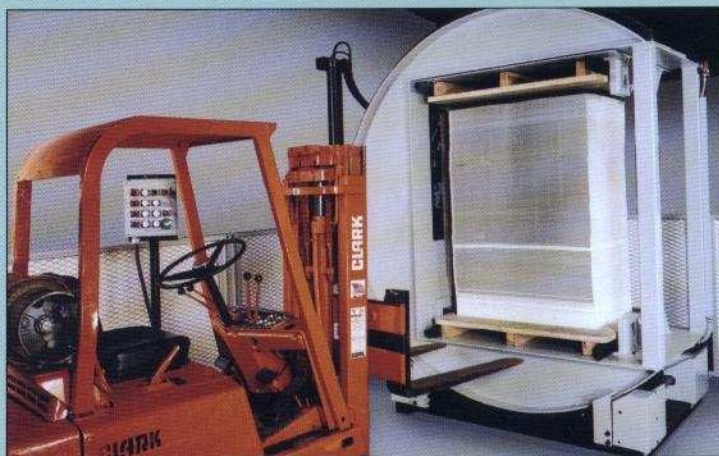
Whether turning loads for downstream operations, changing pallets or inserting slip sheets, manual handling of large loads can be time consuming, back breaking and expensive. The Automatån Load Turner reduces these tasks to a simple one person operation taking only a fraction of the time required for manual stacking.



This center axis inverting machine style is optional and can be equipped with automatic pallet clamping to eliminate manual pallet handling.



Operating controls can be positioned for easy one button operation from the lift truck.



### ***Simple all mechanical design and rugged construction assure years of dependable service.***

The Automatån Load Turner concept is as simple and as basic as the wheel, and offers years of safe, efficient, low maintenance load turning. Using circular steel side frames cradled on heavy rollers, one electric motor effortlessly turns even the largest loads. Each load is securely held within the turner by a mechanically operated platen and the entire machine rotates on the cradle.

Photo beams ensure safety. Interrupting the photo beams will stop machine rotation and platen operation until the area is clear and the reset buttons have been pressed.

### ***Unmatched versatility.***

Automatån Load Turners are available in a range of sizes that will fit most requirements.

In addition to our standard load turners, we have designed special applications including power roller conveyors on the base and platen for automated line installation and center axis inverting and automatic pallet clamping. Special requirements for load size and weight can easily be accommodated.

### ***Fully automatic or finger tip control.***

Automated or manual push button operation allows a single operator to easily invert pallet sized loads in seconds. Fully automated machines can be supplied or integrated into existing systems.





This Model A73VA is installed in a shallow pit for easy floor level loading using a standard pallet jack.



The VA style machine, equipped with air and vibration, is designed for handling paper and board. Ask for details.

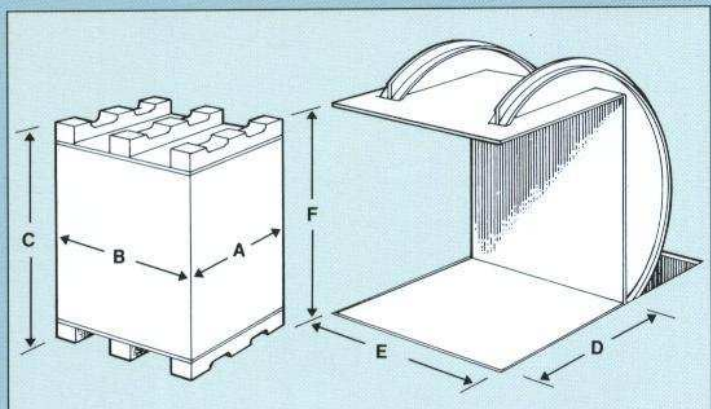
## Specifications

LOAD SPECIFICATIONS			
MODEL	MAXIMUM LOAD AREA		CAPACITY
	A	B	
A 63 T	53"	78"	3500 lbs.
A 73 T	59"	78"	4500 lbs.
A 83 T	59"	78"	5500 lbs.

*NOTE: Automatän Load Turners can be designed for special application requirements. Ask your Automatän representative for details.*

MACHINE SPECIFICATIONS					
MODEL	DEPTH OF OPENING D	WIDTH OF OPENING E	HEIGHT OF OPENING F	MACHINE WEIGHT	AMPS AT 440 VOLTS
A 63 T	53"	78"	63"	6500 lbs.	15 amps
A 73 T	59"	78"	73"	7000 lbs.	15 amps
A 83 T	59"	78"	83"	7800 lbs.	20 amps

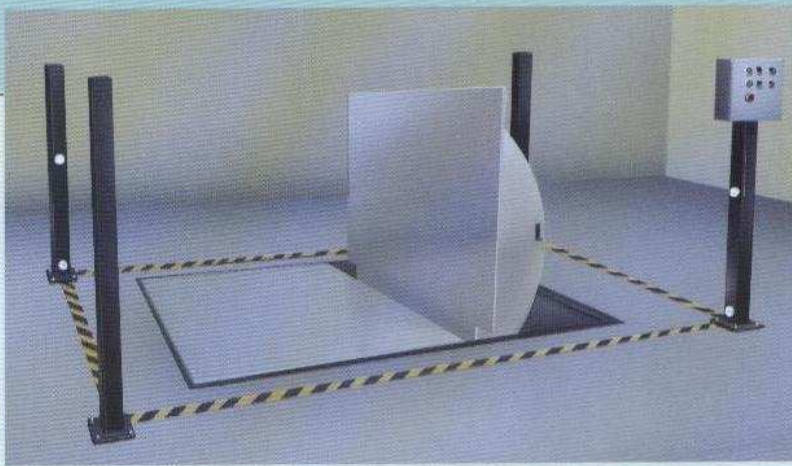
Specifications are subject to change without notice.



The center axis style inverters are ideal for automated line installations and can be fitted with power roller conveyors on the base and platen.



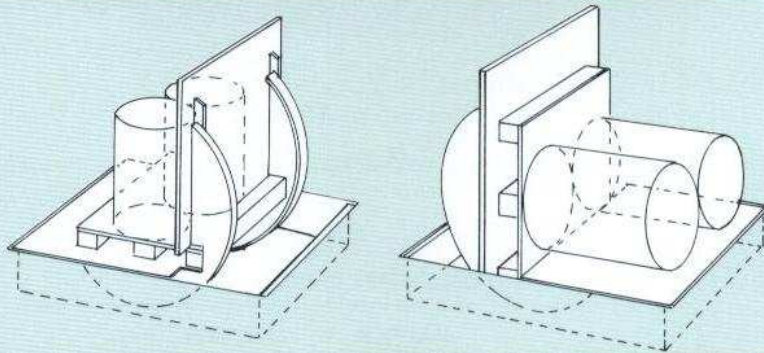




### L-Model Load Turner

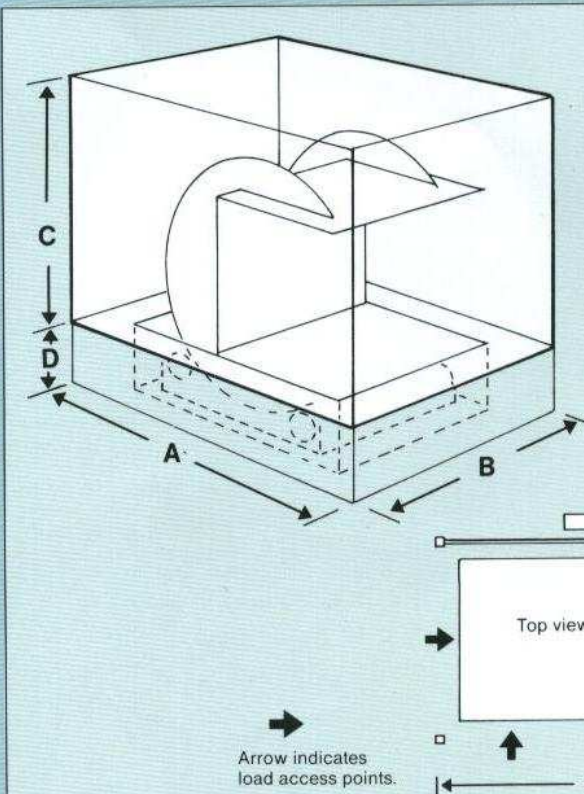
When 90° turns are needed, the Automatän L-Model Turner is the ideal solution. It turns bulky, hard-to-handle loads in seconds with an effortless touch of a button. This handy load turner is designed for palletizing and depalletizing rolls, coils, barrels and other materials that are difficult or dangerous to handle without specialized equipment. The L-Model Load Turner reduces the risk of back or other injuries caused by improper lifting or load shifting that can occur when these functions are performed manually.

Each L-Model Turner is custom built to meet your specific requirements. Ask your Automatän representative for details.



### Machine space requirements and recommended\* minimum clearance from stationary objects.

MODEL	A	B	C	D
A 63 T	144"	120"	84"	19"
A 73 T	144"	120"	94"	19"
A 83 T	150"	120"	104"	19"



\* These measurements represent minimum operational clearances from building support columns, overhead trusses, beams, and utilities. Additional space adequate for loading/unloading and operator convenience must be allowed for. The product, product flow, and pallet handling equipment in each plant affect additional space requirements for loading/unloading in your plant. NOTE: While these specifications may be used for general site planning, they SHOULD NOT be used for site preparations. Detailed prints will be provided for site preparation. All specifications are subject to change without notice.