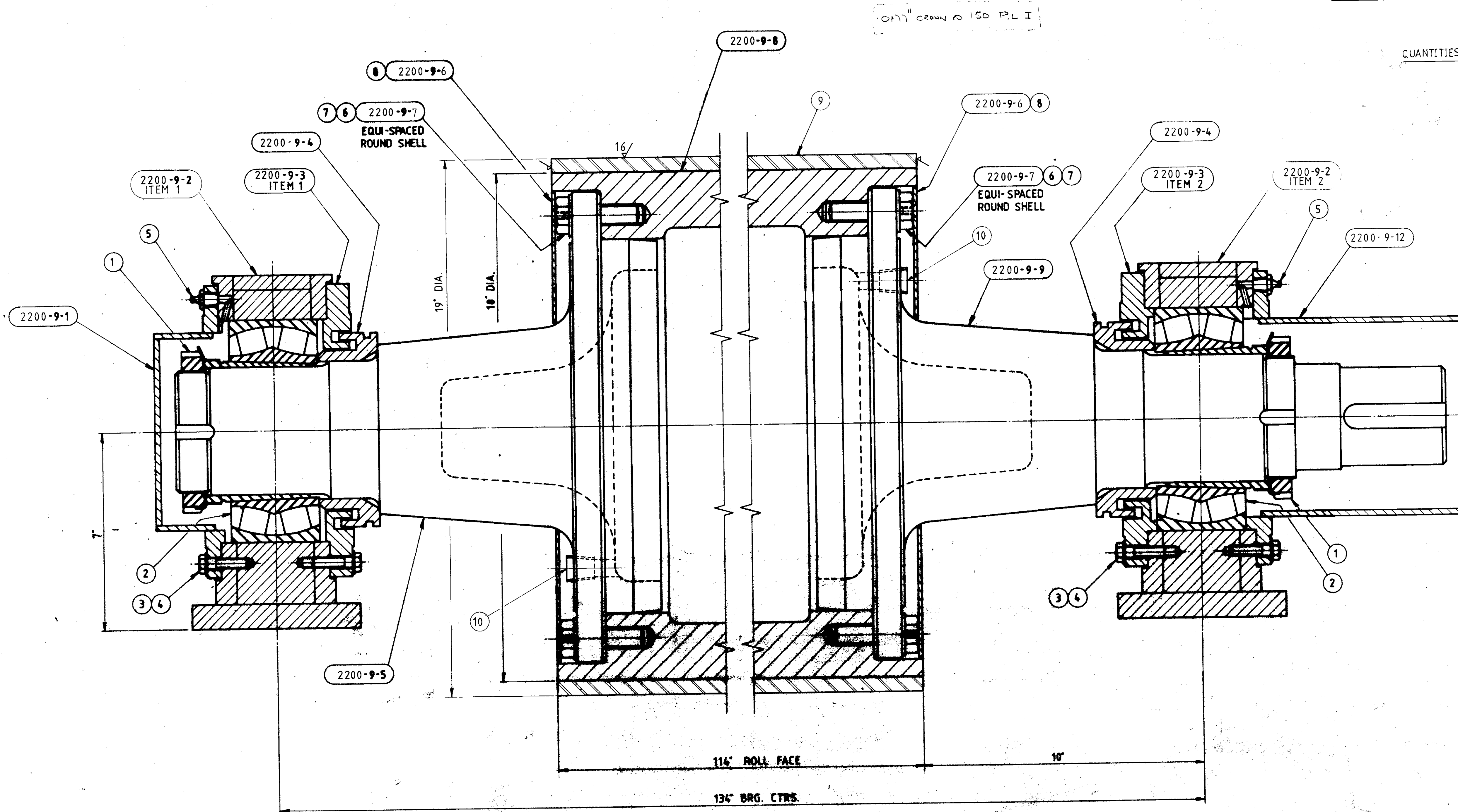


First Angle Projection

Do Not Scale

ITEM	DESCRIPTION	QTY.
1	S.K.F. LOCK-NUT KM22 & LOCK-WASHER MB 22	B.O.F. 2
2	S.K.F. SPHERICAL ROLLER BRG. & WITHDRAWAL SLEEVE N° 24124 CK30-AH24124 (200mm O.D. x 115mm I.D.)	B.O.F. 2
3	HEX. HD. BOLT 3/8" U.N.C. x 1 1/2" LG.	ST.ST. 24
4	3/8" WASHER	ST.ST. 24
5	1/2" N.P.T. GREASE NIPPLE	ST. 2
6	HEX. HD. BOLT 3/8" U.N.C. x 2 1/2" LG.	M.S. 24
7	3/8" WASHER	M.S. 36
8	SOC. HD. C/SUNK SCREW 3/8" U.N.C. x 1/2" LG.	ST.ST. 12
9	MICROROK RUBBER COVER 1/2" THK.	1
10	1/2" N.P.T. C/SUNK PIPE PLUG	ST. 2

QUANTITIES ARE FOR (1) ROLL



NOTES:-
DYNAMICALLY BALANCE FOR 211 R.P.M.
ASSEMBLE HEADS WITH PIPE THRS. 180° APART

LPT# 44M0457-1

MACHINING SHOWN THUS ✓ SURFACE FINISH TO C.L.A. INDEX No. BSS 1134		5			
GENERAL MACHINING TOLERANCES:		4			
UP TO 200 mm ± 0.13 mm 8 in ± 0.005 in		3			
OVER 200 mm ± 0.25 mm 8 in ± 0.01 in		2			
Title		REVISION			
Scale		Title			
1:2		ARRGT. SIZE PRESS ROLL			
Issue		Drawn	Date	Checked	Order Title
1		G.W.R.	30-11-77		LINCOLN P.M. N°
Dwg. No.		Holder Consultants Ltd.			
2200-9-14					