

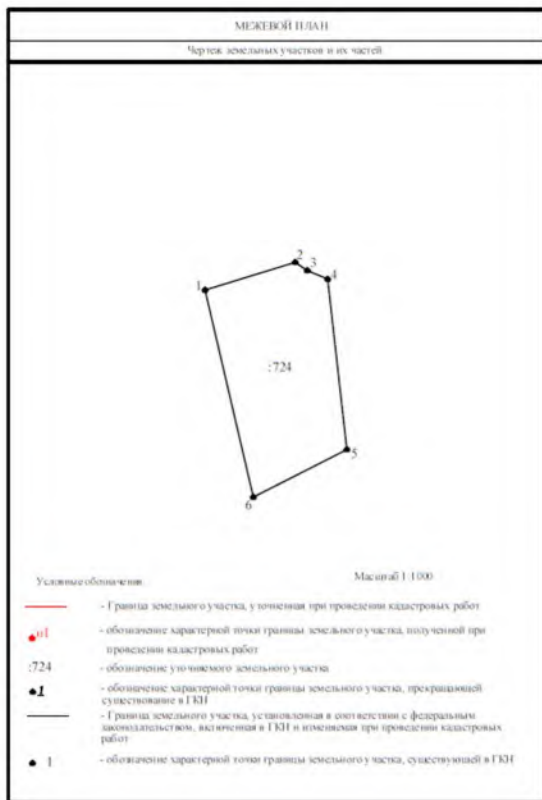
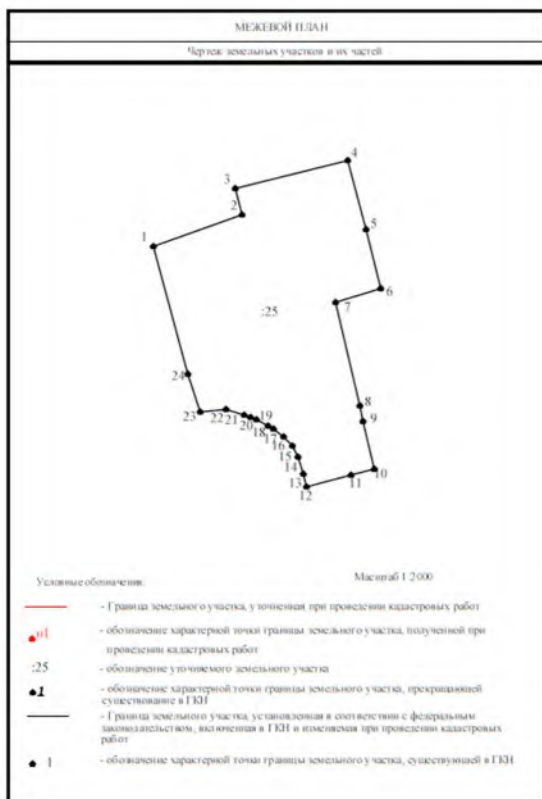
“RusTimberTrade” LTD.

COMMERCIAL OFFER

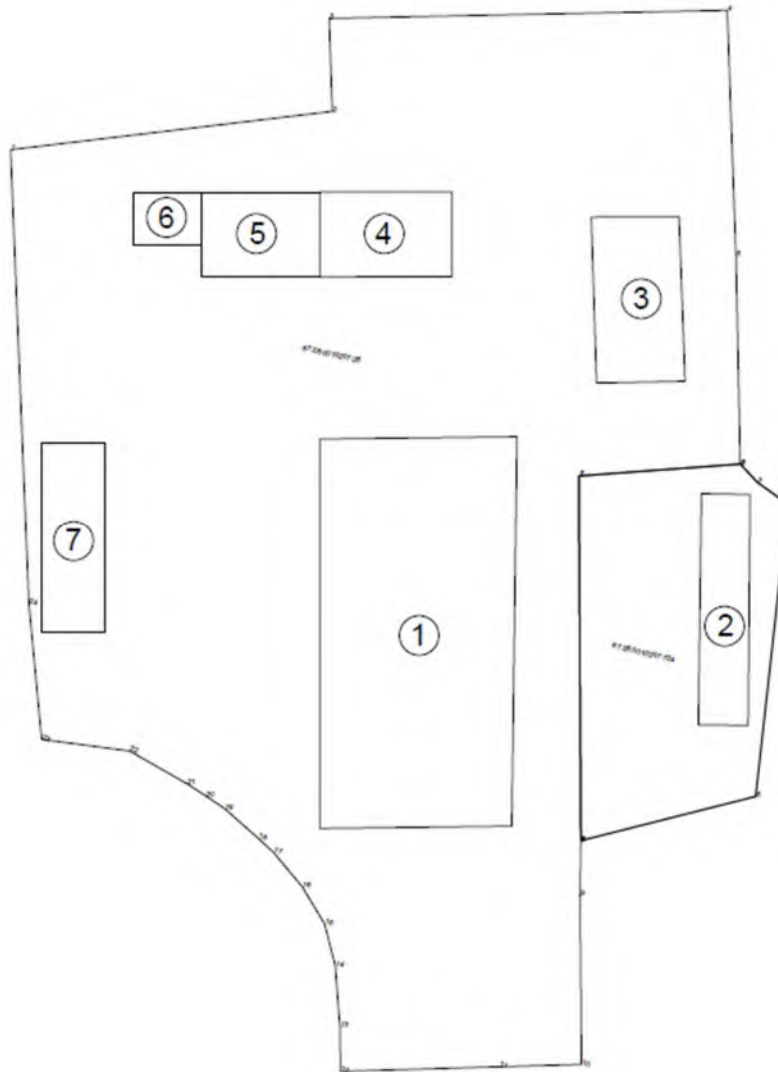


At the full-cycle production facility, the journey of creating superior Birch cut-to-length furniture components begins with the selection of high-quality Birch logs. These logs undergo a meticulous cutting process, transforming them into uniformly cut un-edged boards. After this, the boards enter the critical drying phase, where their moisture content is reduced to furniture grade 6-8%. The now dried boards are then ripped, yielding smoothly edged, straight lumber. Each piece is then sorted based on its dimensions and quality. Calibration follows, refining the thickness of each board to meet exact specifications. The last step involves optimizing each board for length and diligently rectifying any defects. From start to finish, the facility is steadfast in its commitment to deliver the highest quality of furniture components, catering to a wide spectrum of manufacturing needs.

LAND BOUNDARY PLAN



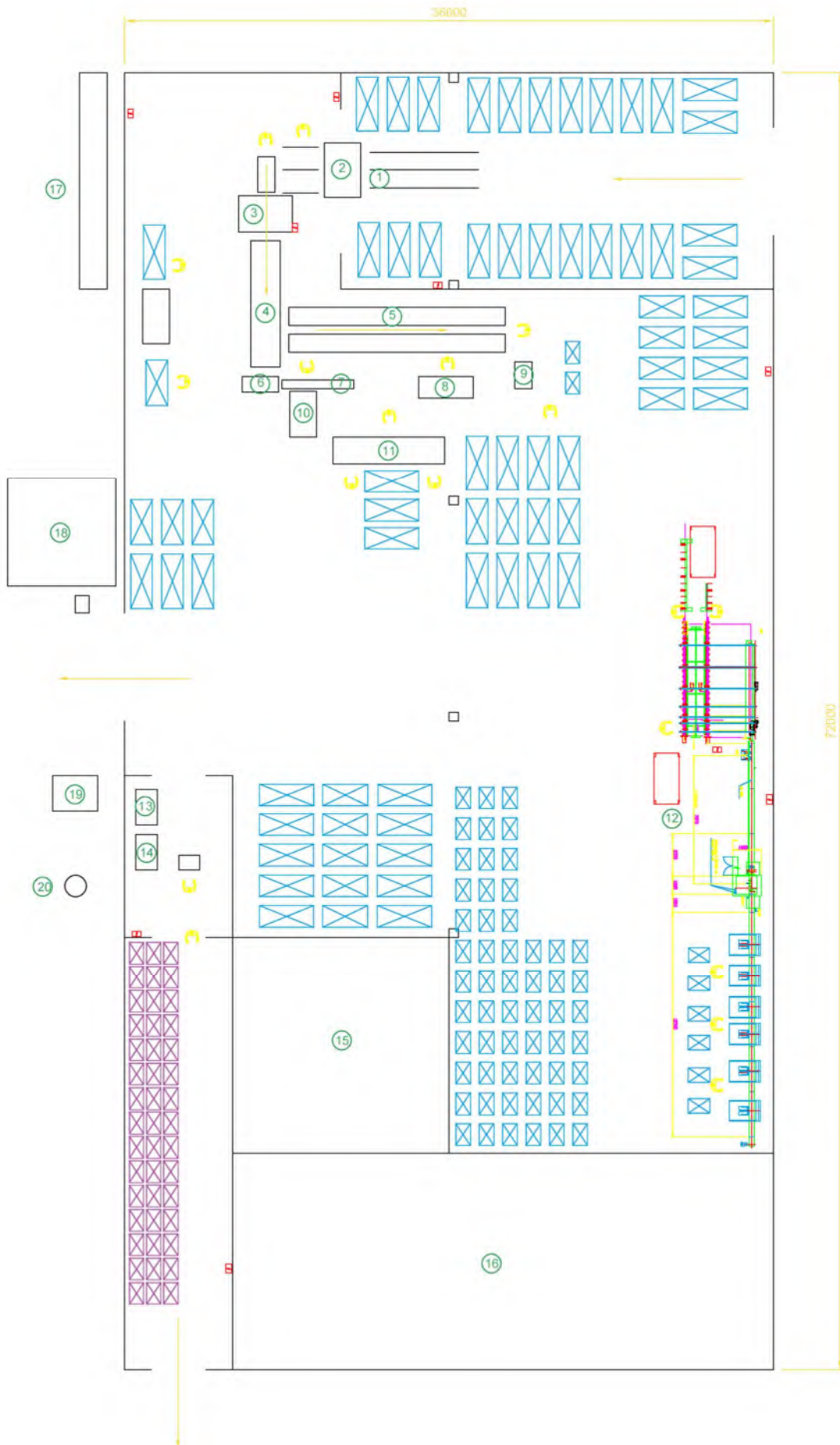
LAND BOUNDARY PLAN WITH MAIN STRUCTURES



LAND BOUNDARY PLAN WITH MAIN STRUCTURES		
1	Main Production Facility	2832,5 m2
2	Drying Kilns	395,4 m2
3	Material Warehouse	504,6 m2
4	Boiler Premises No. 1	414,1 m2
5	Boiler Premises No. 2	~350 m2
6	Moving Grates(Fuel for Boiler)	~215 m2
7	Sawmill	~432 m2
	Total:	~5142 m2

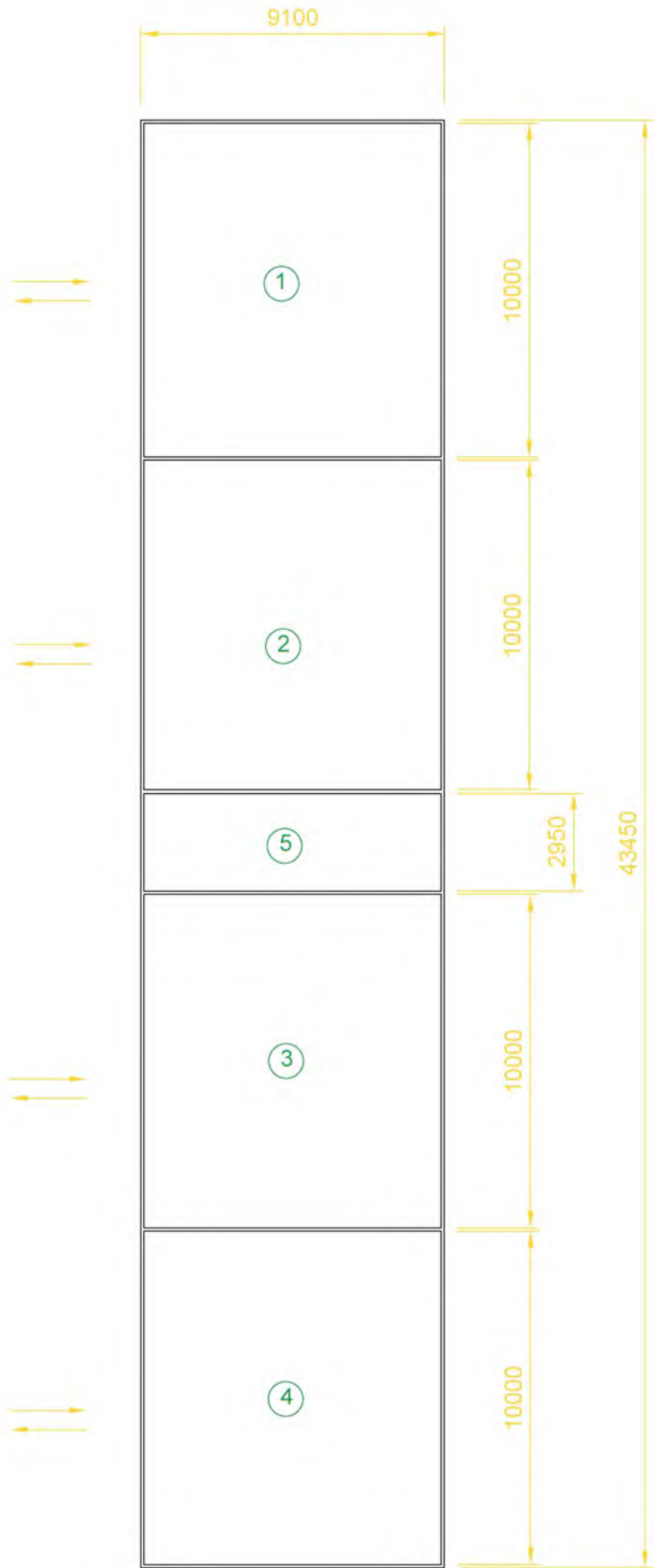
LAND BOUNDARY PLAN AREA	
67:25:0010207:25	~19180 m2
67:25:0010207:724	~2371 m2
Total:	~21551 m2

1. MAIN PRODUCTION FACILITY



	LIST OF EQUIPMET / POSITION	MANUFACTURER	MODEL	COUNTRY
1	MULTIRIP PACK INFEED CHAINS	SWEDABO		SWEDEN
2	TILT INFEED / UNEDGED BOARDS PACK DISMANTLER	SWEDABO		SWEDEN
3	MULTIRIP SAW WITH 4 MOVABLE BLADES AND 2 FIXES AT SIDES	FORMA MACHINERY	DZ-4-450	LATVIA
4	MULTIRIP OUTFEED ROLLER CONVEYOR WITH CROSS-UNLOAD	SWEDABO		SWEDEN
5	ABS PLASTIC BELT CONVEYORS FOR LUMBER AFTER MULTIRIP SAW	SWEDABO		SWEDEN
6	CUTT-OFF'S CHIPPER AFTER MULTIRIP	FRANSSON	TRM 70S	SWEDEN
7	VIBRO TABLE CHIPPER INFEED	FRANSSON		SWEDEN
8	DOUBLE CROSS – CUT SAW FOR LUMBER	SWEDABO		LATVIA
9	TWO SIDED CALIBRATING MOUDLER WITH SPIRAL HEADS	GOODTEK		PRC
10	VIBRO TABLE CHIPPER INFEED	FRANSSON		SWEDDEN
11	LENGHT CUTTING SAW WITH PROGRAMMABLE WIDTHS	FORMA MACHINERY	GA450	LATVIA
12	OPTIMIZATION LENGHT CROSS-CUT SAW WIHT 3 MARKING STATIONS AND 6 OUTFEED STATIONS(SERVO SAW, SERVO INFEED BELT, SERVO WASTE GATE). 2 HYDRAULIC LIFTS FOR RAW MATERIAL HANDLING.	WEINIG	OPTICUT 350S	GERMANY
13	WOOD BRIQUETTING PRESS, 450 KG/HOUR	RUF	BP440	GERMANY
14	WOOD BRIQUETTING PRESS, 450 KG/HOUR	UMP	BP420A	LITHUANIA
15	VARIOUS WAREHOUSE FOR SPARE PARTS			
16	EMPLOYEE PREMISES, OFFICE PREMISES, ETC.			
17	AIR FILTERING SYSTEM, 55000 M3/HOUR + TRANSPORT VENTILATORS	NORDFAB		DENMARK
18	200M3 SILOS WITH MOVING FLOOR AND OUTFEED TO HAMMER MILL			
19	AIR FILTER SYSTEM, 10000 M3/HOUR			
20	MULTI-CYCLONE FOR SAWDUST TRANSPORTATION TO WOOD BRIQUETTERS	SWEDABO		SWEDEN
21	4 SIDE MOULDER, 5 HEADS (PLANNER)	REIGNAMAC	RMM523	PRC
22	COMPRESSED AIR DRYER SYSTEM			
23	SCREW AIR COMPRESOR, 3.0 M3/MIN			
24	PISTON AIR COMPRESSOR 2.0 M3/MIN			
25	HAMMER MILL, 1.5T /HOUR			
26	TECHNICAL PREMISES			

2. DRYING KILNS

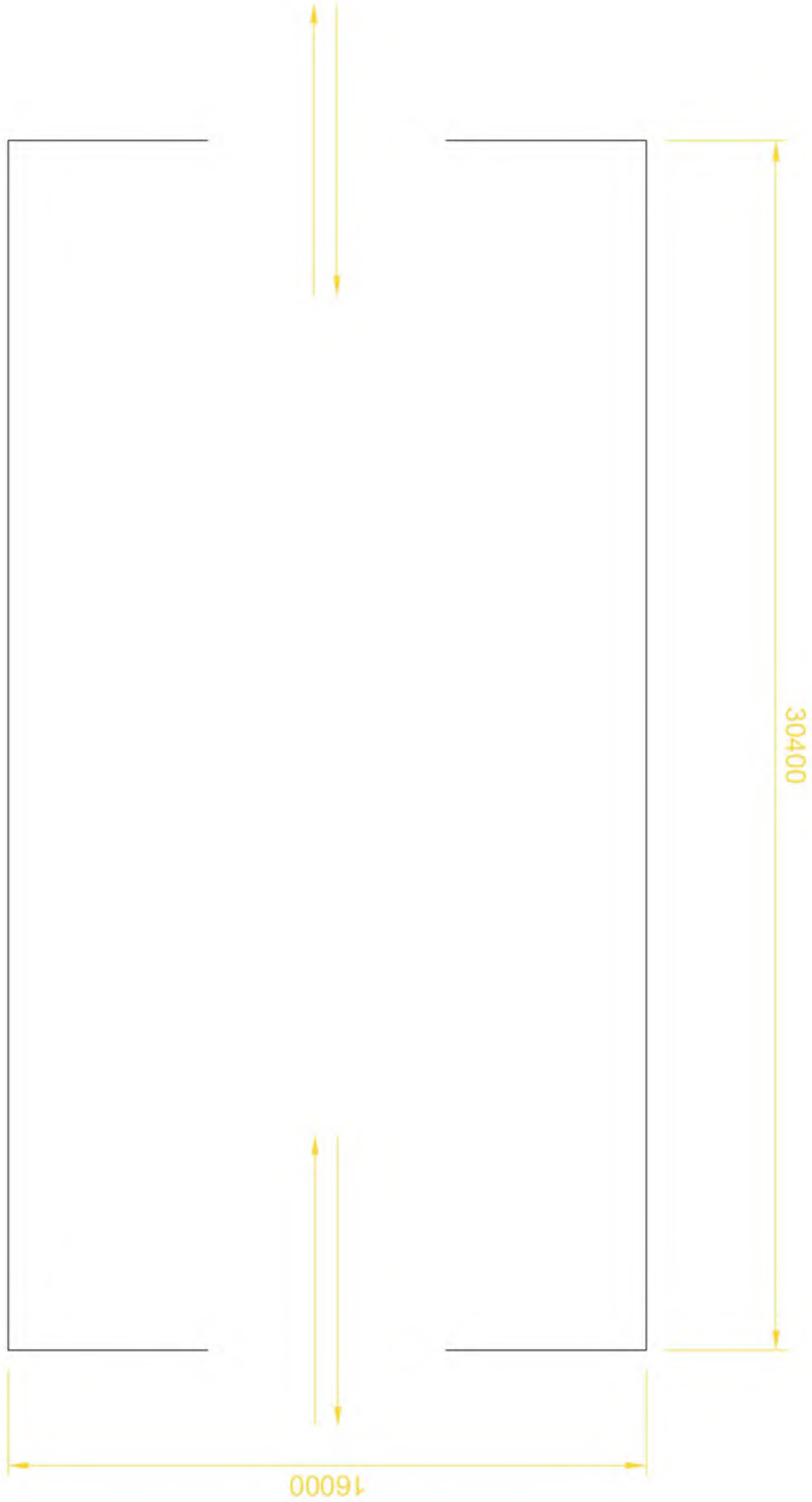


	POSITION	MANUFACTURER	MODEL	COUNTRY
1	DRYING KILN #1	EKO-POL		POLAND
2	DRYING KILN #2	EKO-POL		POLAND
3	DRYING KILN #3	EKO-POL		POLAND
4	DRYING KILN #4	EKO-POL		POLAND
5	CONTROL ROOM	EKO-POL		POLAND

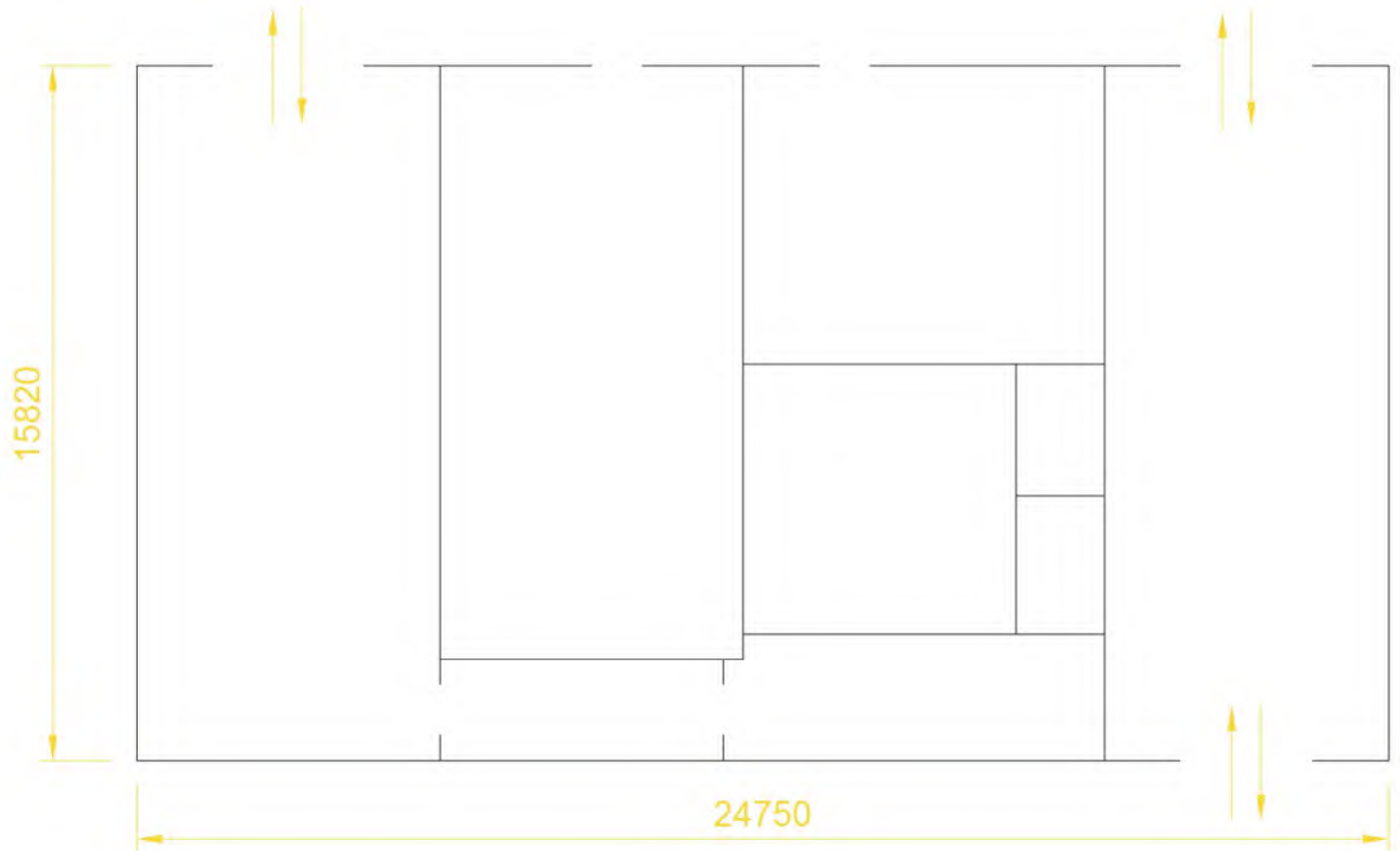
Hardwood drying kilns are key components of any manufacturing facility looking to produce high-quality wood products. With each kiln's generous capacity, accommodating up to **60 cubic meters** of unedged boards or approximately **100 cubic meters** of edged boards, they are capable of supporting large-scale operations.

The kilns have an internal usable space for material displacement of **10 meters** in width, **6 meters** in depth, and a ceiling height of **4.1 meters**, offering ample room for various wood dimensions. Able to process **45 packs** of unedged boards, each measuring **1.2m x 3m x 1.2m**, per cycle. Automatic controls for precision in temperature and humidity adjustments, kilns ensure optimal drying conditions for every batch. The results are consistently superior wood products, ready for various applications, with significantly reduced chances of defects such as warping or splitting.

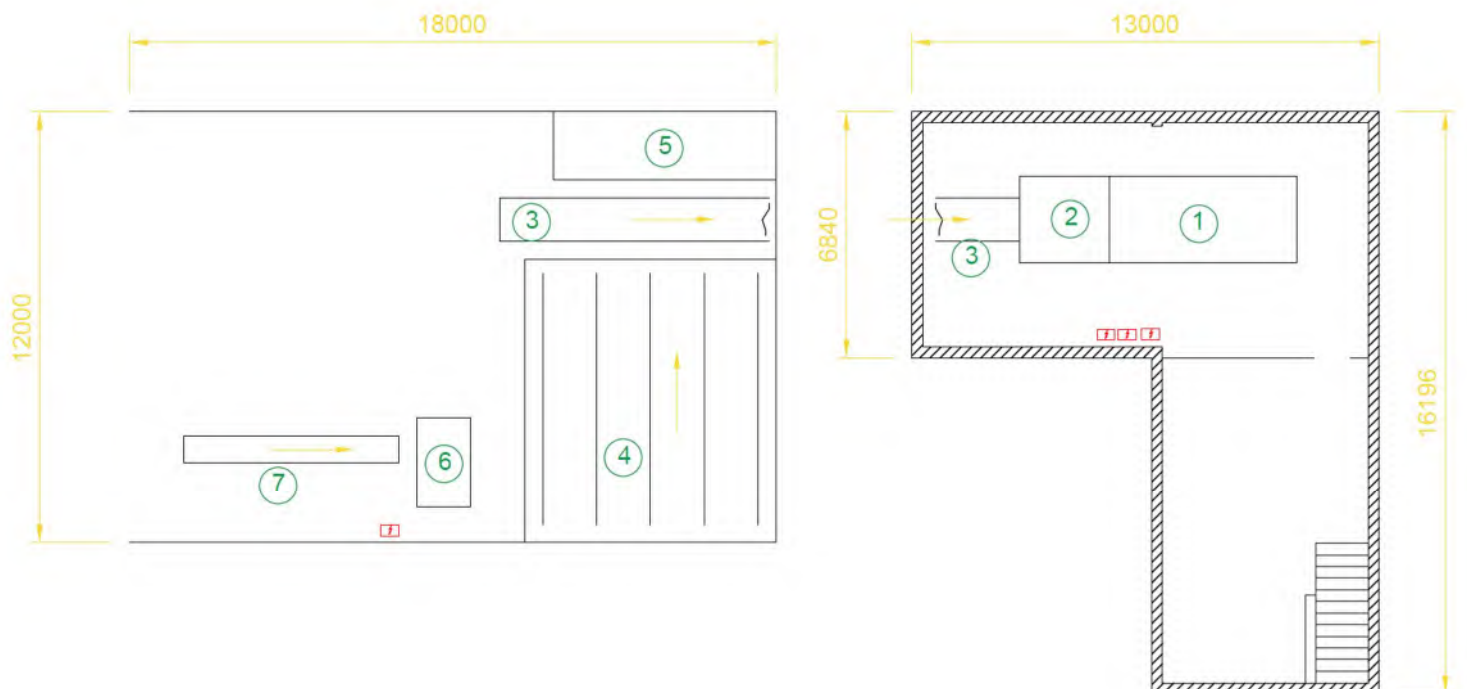
3. MATERIAL WAREHOUSE



4. BOILER ROOM(OLD)



5 & 6. BOILER ROOM(NEW)



	POSITION	MANUFACTURER	MODEL	COUNTRY
1	3000 KW WET WOOD CHIP AND SAWDUST BOILER. HEATING MEDIUM – WATER. 3 LEVEL MOVING GRATES AND AUTOMATIC ASH REMOVAL. FULLY AUTOMATIC WITH BURNING CONTROL, AIR DENSITY CONTROL, VFD, ETC.	POLYTECHNIK		GERMANY
2	HYDRAULIC WOOD CHIP INFEED PUSHER.	POLYTECHNIK		GERMANY
3	WOOD CHIPS TRANSPORT CONVEYOR. SCRAPER TYPE.			
4	HYDRAULIC WALKING FLOOR FOR INFEED TO CONVEYOR	SWEDABO		SWEDEN
5	4 HYDRAULIC CYLINDER MOVING EACH WALKING FLOOR SEPERATELY	SWEDABO		SWEDEN
6	BRUKS WOOD WASTE CHIPPER, 75KW.	BRUKS	1500M	SWEDEN
7	INFEED CONVEYOR TO BRUKS CHIPPER.			

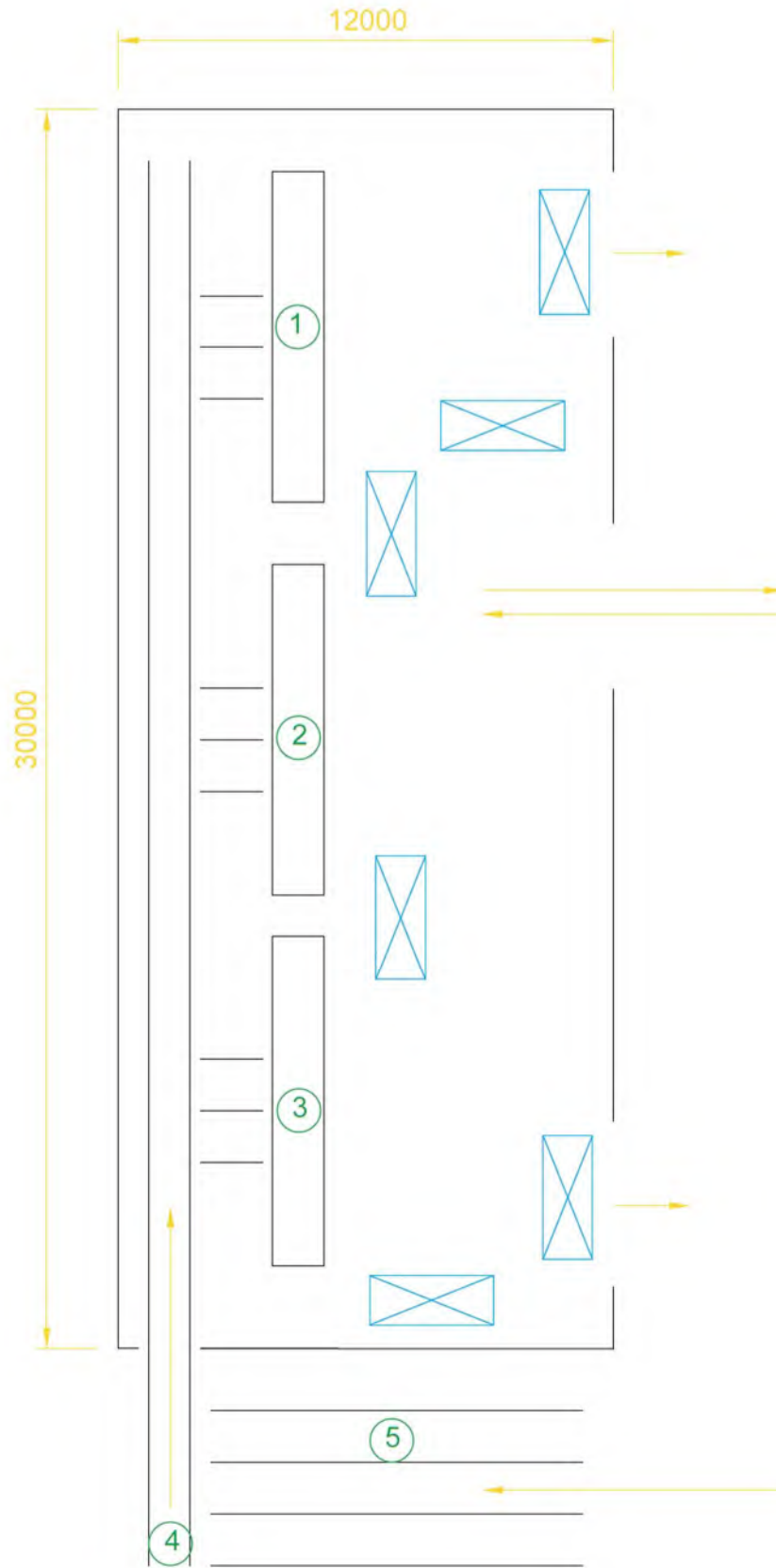
Polytechnik, an Austrian company founded in 1962, is a renowned global player in the field of energy generation from renewable resources. They specialize in manufacturing innovative biomass and combustion technology systems.

The company's hot water boilers, renowned for their quality, efficiency, and durability, are one of the pillars of their extensive product range. Polytechnik's hot water boilers are recognized for their excellent performance in generating heat from various types of biomass, making them a sustainable choice in today's increasingly eco-conscious market.

Polytechnik holds a robust position in the global market, thanks to its commitment to innovation, sustainability, and high-performance technology. They cater to a broad range of sectors, from wood processing to food production and public heating supply, serving clients in over 100 countries.

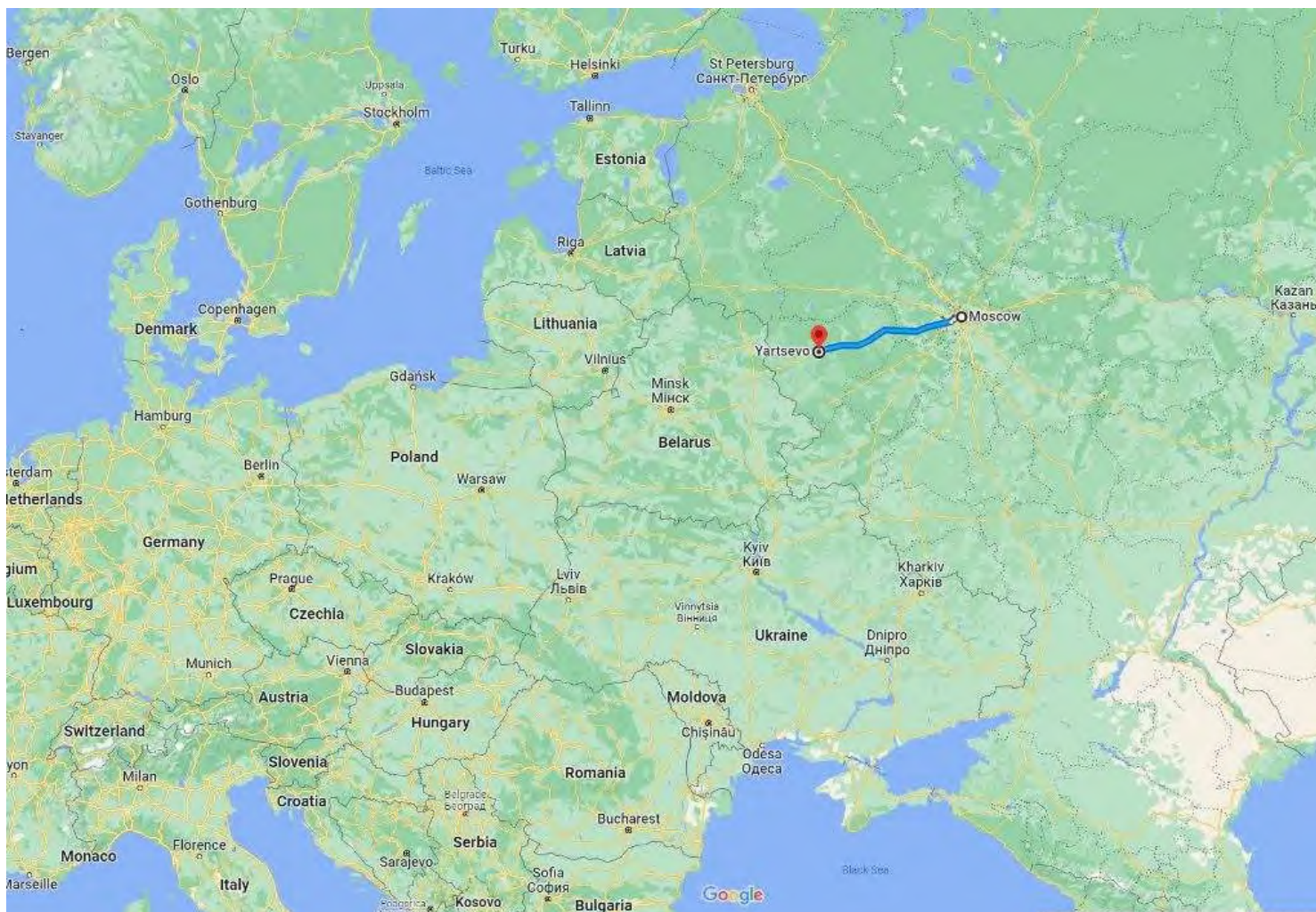
With over six decades of experience, a commitment to sustainable energy solutions, and top-tier technology, Polytechnik continues to lead the industry, providing reliable, efficient, and environmentally-friendly hot water boiler systems.

7. SAWMILL

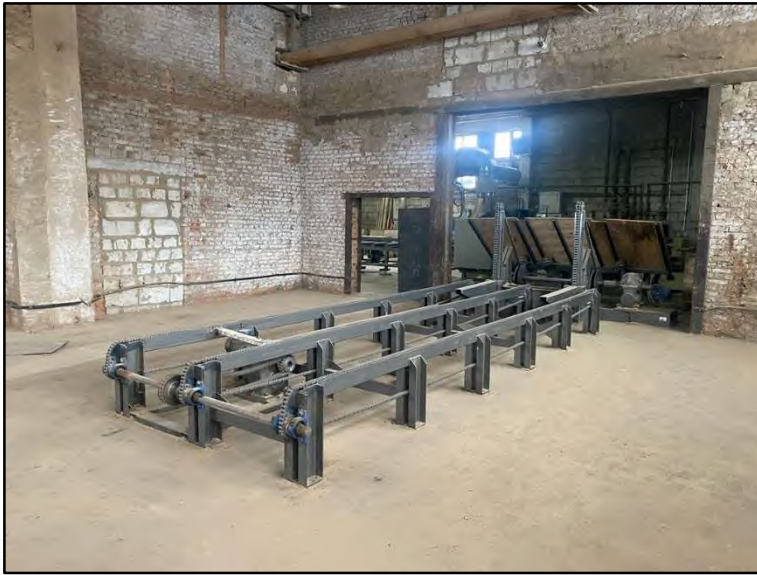


	POSITION	MANUFACTURER	MODEL	COUNTRY
1	HORIZONTAL BANDSAW #1	TALSU TEHNIKA	ZLH-4.25	LATVIA
2	HORIZONTAL BANDSAW #2	TALSU TEHNIKA	ZLH-4.25	LATVIA
3	HORIZONTAL BANDSAW #3	TALSU TEHNIKA	ZLH-4.25	LATVIA
4	RAILS FOR TRANSPORTING LOGS TO BANDSAW BUFFER			
5	INFEED LOG BUFFER			

8. LOCATION

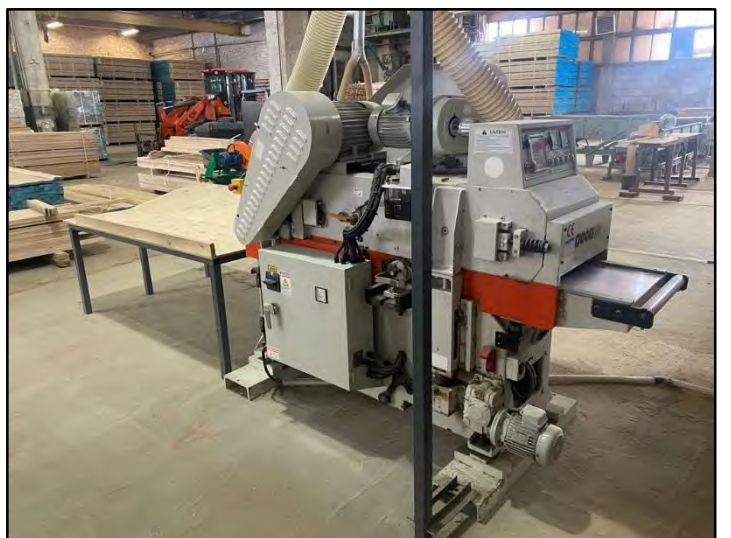
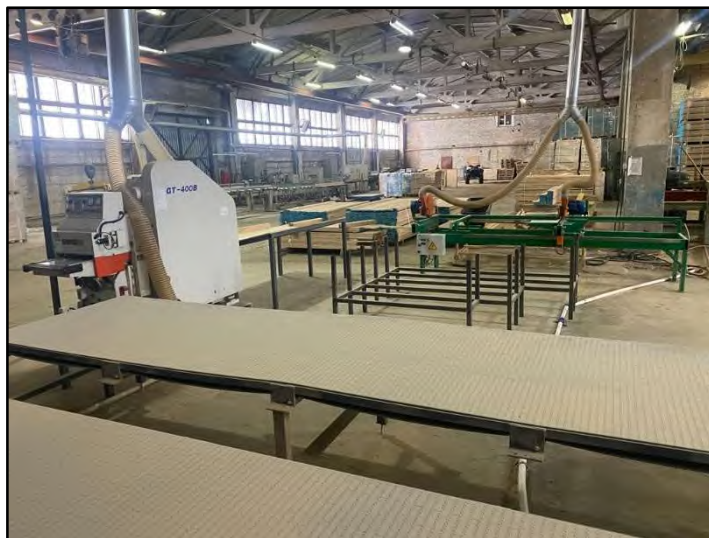
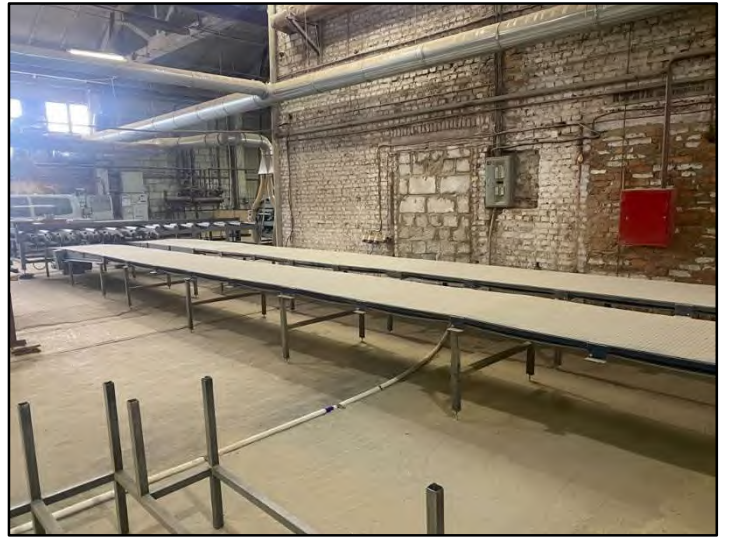


Situated just 100 m off the M1 highway (Moscow – Minsk) and approximately 330 km from Moscow, this full-cycle production facility boasts an exceptional location advantage. In addition to superb road links, the site lies within 1 km of the Moscow – Minsk railway line and features rail spurs for direct loading and unloading of birch logs and other supplies, further ensuring the seamless inflow of materials and the efficient export of ready-to-assemble furniture components. Its strategic multimodal connectivity makes it a highly efficient link between abundant natural resources and the global market, symbolizing a confluence of nature’s bounty and human craftsmanship.





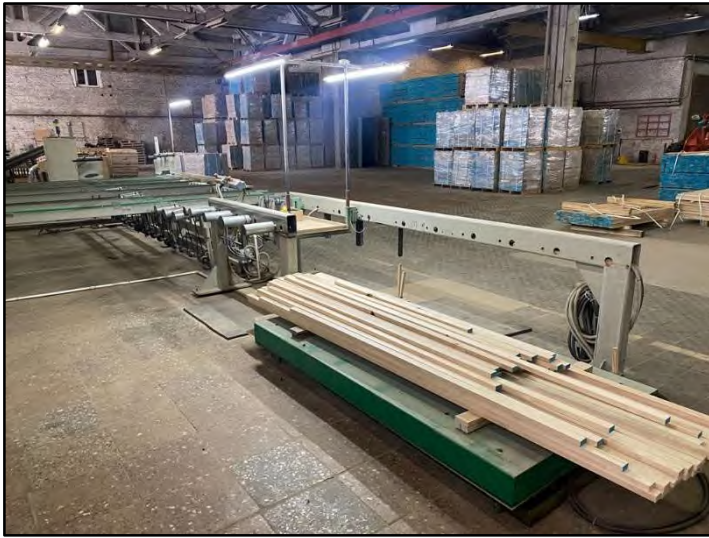


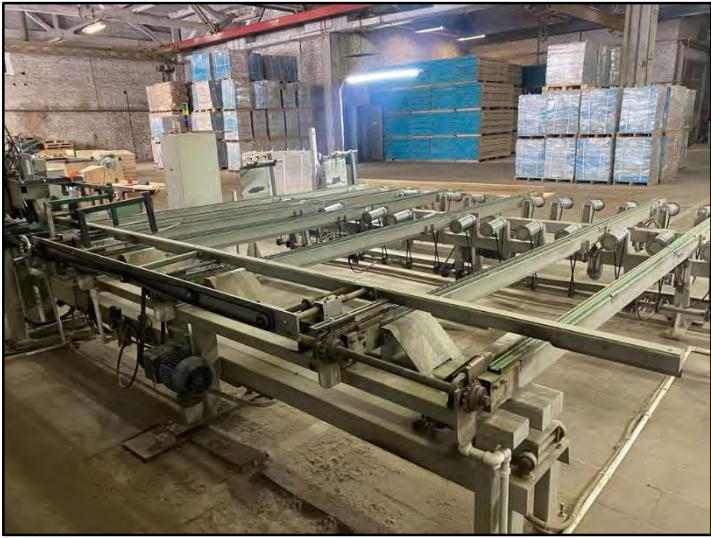






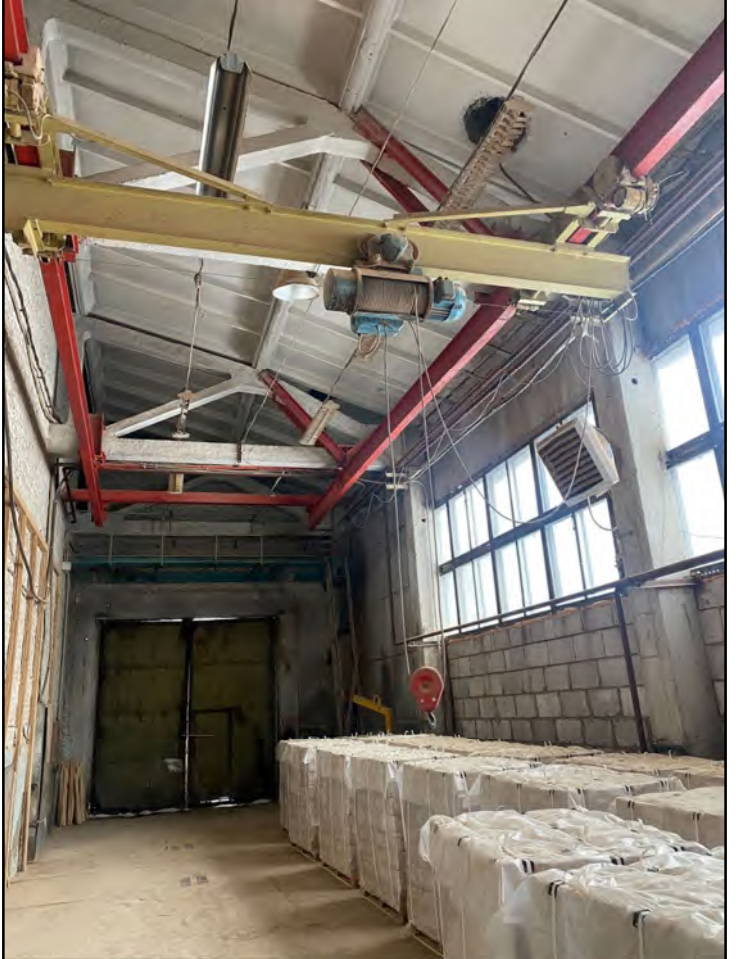










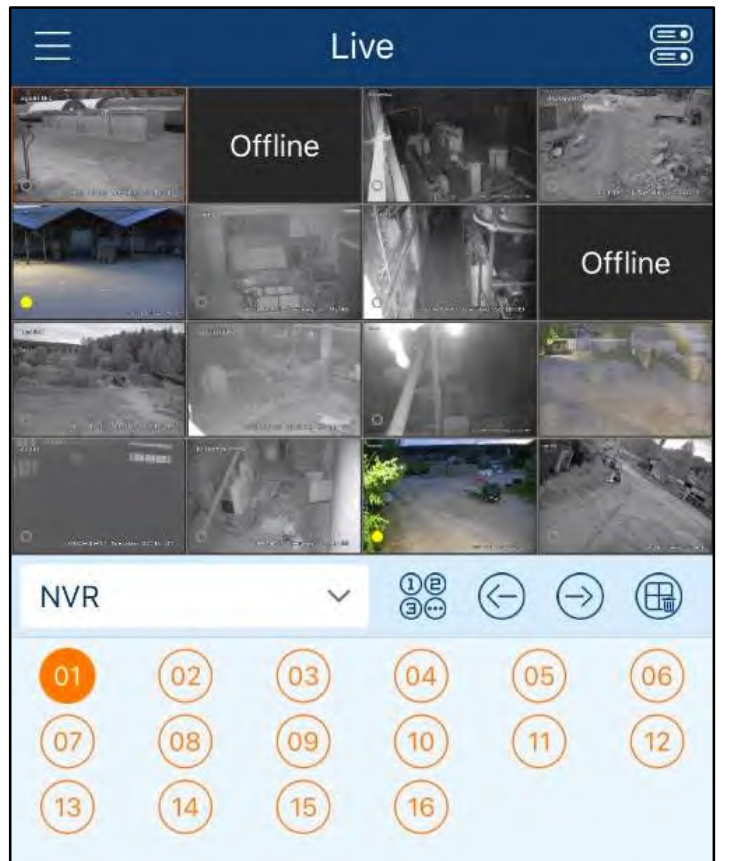












ADDITIONAL INFORMATION AND EQUIPMENT LIST

Please note that it is a complete facility with all the necessary equipment and key personnel in place for successful operations. We are not able to list every single detail, equipment - we would just mention that there is a owned power transformer in territory for 2400Amps, several forklifts, log truck, video surveillance in all of the facility, etc. please see additional pictures below for additional information. We also have a video presentation of all of the facility. For any additional information – please do not hesitate to ask any questions or book an online meeting for any additional question / inquiry.

Contact phone:

Aldis Lacis
+46 70 492 23 41

e-mail:

info@rustimbertrade.ru

Link to book an online meeting:

<https://calendly.com/rustimbertrade-info/30min>

web:

www.rustimbertrade.ru

Link to Video overview of facility:

<https://youtu.be/GWjZKqyYGEI>

QR code to Video overview of facility:

