

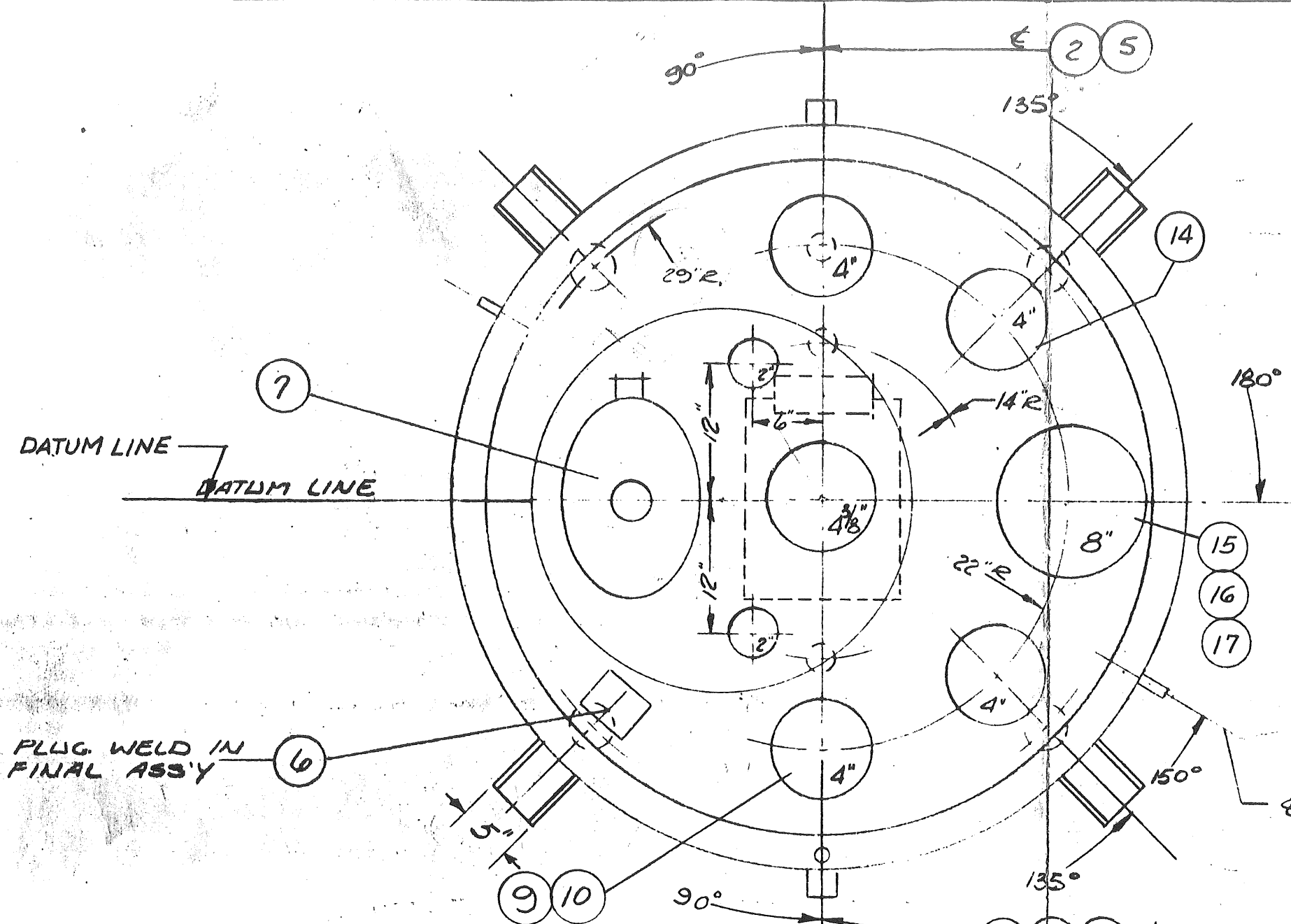
REF NO	NO REQD	PART N	PER DWG N	DESCRIPTION
1	1	1603617	---	PLUG, 1/2" (3000")
2	3	1604116	---	PLUG, 2"
3	1	3104999	---	JCW, 60"x72"
4	3	1603952	---	PLUG, 1 1/2"
5	3	1130041	---	NOZ, AGIT, 1 1/2"
6	1	3106280	---	NAMEPLATE ASSY
7	1	3122633	---	M.H. ASSY 30" W/14"x18" M.H. & NUCERITE PROT. RIN
8	1	3105035	3105033	AGIT. 44" SPAN
9	1	3105070	3105067	BAFFLE, UP, 2BL. .765x6"
10	1	3117134	---	GUIDE, BAFFLE, ASSY
11	1	1225721	1225700	DRIVE ASSY, 5TWFV0, 10 H.P., 3 PH., 60 CY. 220/440 V, 1800 RPM, E.P.MTR.
12	1	3122190	---	PEDESTAL & CRANE SINGLE SEAL ASSY
13	4	3103120	---	SIDE SUPT'S.
14	1	1360040	---	ELECT. LIGHT ASSY, 4", 200 W, E.P.
15	1	1502094	---	FLG. RED. GL. 8"x4"
	1	1606835	---	VALVE, POP, 1 1/2" 90° (SHIP LOOSE)
16	8	1602781	BOLT SQ. HD. 3/4"-10x3 3/4" LG.	
17	8	1600369	HEX. NUT, 3/4"-10	

MATERIAL		
TANK, MATL SPEC.	SA-285 CRB (FULL QUAL)	
JKT., MATL SPEC.	SA-212 CRA "	
SEALER, MATL SPEC.	" " " "	
	TANK	JACKET
THK. TYPE - HD TOP	1 1/16" ELLIP	
THK. TYPE - HD BOT	5/16" "	3/16" F&D
THK OF SHELL	1/16" "	3/8" "
THK. TYPE-SEALER		3/8" "
SPECIFICATIONS		
CODE-	YES	YES
INS. INSP. & STAMP	YES	YES
DESIGN PRES., PSI	100 OR	90 OR
	* FV	90 W/FV
DESIGN TEMP., °F	350	350
CUST. WKG. PRES., PSI		
CUST. WKG. TEMP., °F	Δ	
HYDRO TEST, PSI	100	135
RADIOGRAPH	NO	NO
HEAT TREAT, TEMP. °F		
HEAT TREAT, TIME		
QUENCH		
Δ SEE PFAUDLER LITERATURE FOR LIMITATIONS		

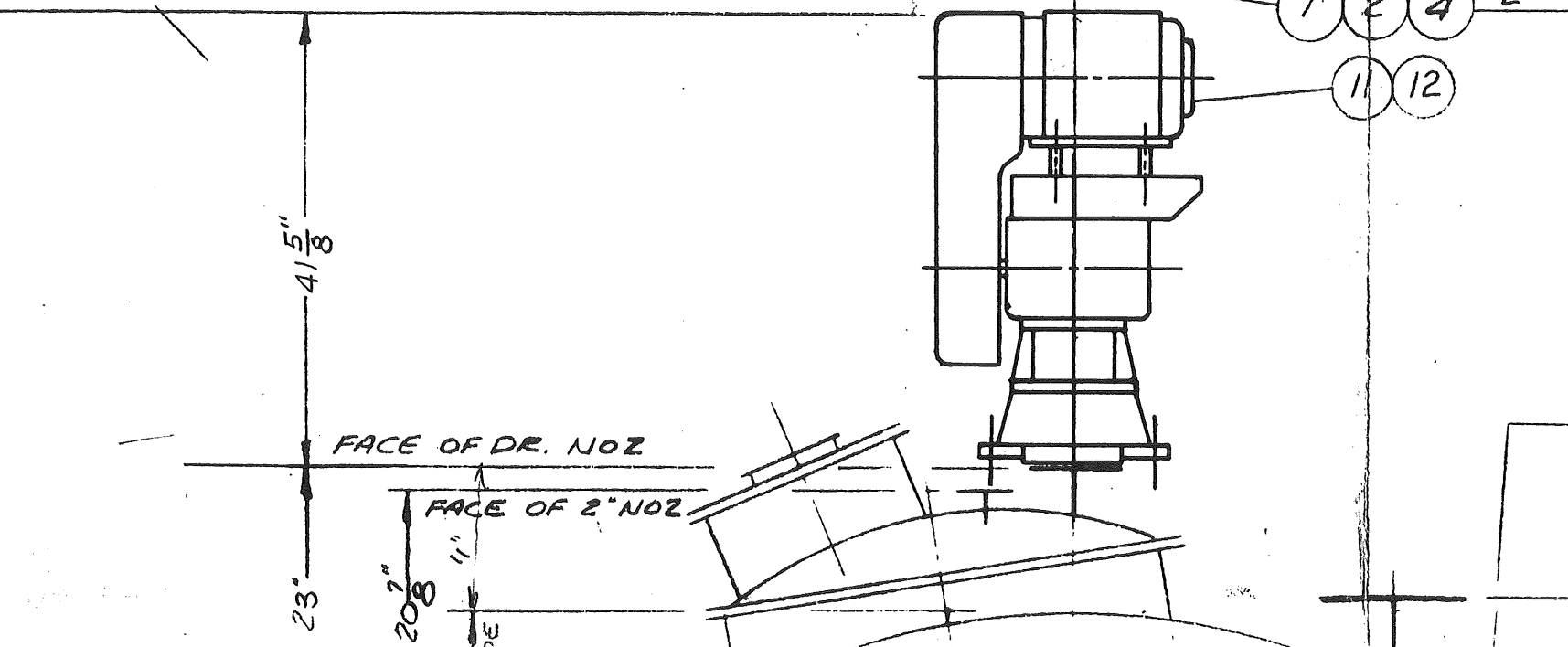
NOTE:-
 SET STOPS FOR 117/40 RPM AGIT. SPEEDS.
 MAX. OPERATING PRESS. FOR SINGLE SEAL IS 25 PSI AT 250 °F

REMOVE FROM TOP HEAD BEFORE SHIPPING

(17/8")



REF NO	NO REQD	PART N	PER DWG N	DESCRIPTION
1	1	1603617	---	PLUG, 1/2" (3000")
2	3	1604116	---	PLUG, 2"
3	1	3104999	---	JCW, 60"x72"
4	3	1603952	---	PLUG, 1 1/2"
5	3	1130041	---	NOZ, AGIT, 1 1/2"
6	1	3106280	---	NAMEPLATE ASSY
7	1	3122633	---	M.H. ASSY 30" W/14"x18" M.H. & NUCERITE PROT.RIN.
8	1	3105035	3105033	AGIT. 44" SPAN
9	1	3105070	3105067	BAFFLE, UP, 2BL. .765x6"
10	1	3117134	---	GUIDE, BAFFLE, ASSY
11	1	1225721	1225700	DRIVE ASSY. 5TWFV0, 10 H.P., 3 PH., 60 CY. 220/440 V, 1800 RPM. E.P.MTR.
12	1	3122190	---	PEDESTAL & CRANE SINGLE SEAL ASSY
13	4	3103120	---	SIDE SUPT'S.
14	1	1360040	---	ELECT. LIGHT ASSY, 4", 200 W, E.P.
15	1	1502094	---	FLG. RED. GL. 8"x4"
	1	1606835	---	VALVE, POP, 1 1/2" 90° (SHIP LOOSE)
16	8	1602781	BOLT SQ. HD. 3/4"-10x3 3/4" LG.	
17	8	1600369	HEX. NUT, 3/4"-10	



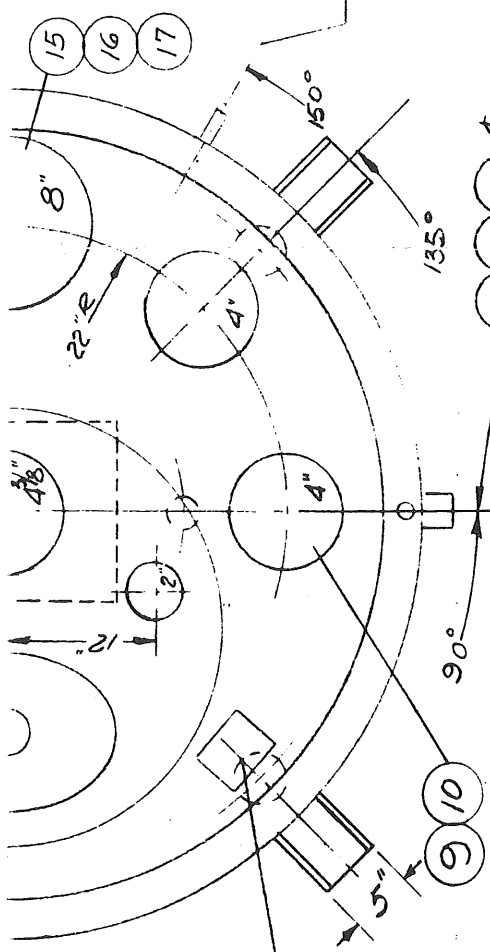
NOTE:-
 SET STOPS FOR 117/40 RPM AGIT. SPEEDS.
 MAX. OPERATING PRESS. FOR SINGLE SEAL IS 25 PSI AT 250 °F

REMOVE FROM TOP HEAD BEFORE SHIPPING

MATERIAL		
TANK, MATL SPEC.	SA-285 CRB (FULL QUAL)	
JKT., MATL SPEC.	SA-212 CRA "	
SEALER, MATL SPEC.	" " " "	
	TANK	JACKET
THK. TYPE - HD TOP	1 1/16" ELLIP	
THK. TYPE - HD BOT	5/16" "	3/16" F&D
THK OF SHELL	1/16"	3/8"
THK. TYPE-SEALER		3/8"
SPECIFICATIONS		
CODE-	YES	YES
INS. INSP. & STAMP	YES	YES
DESIGN PRES., PSI	100 OR	90 OR
	* FY	90 W/FY
DESIGN TEMP., °F	350	350
CUST. WKG. PRES., PSI		
CUST. WKG. TEMP., °F	Δ	
HYDRO TEST, PSI	100	135
RADIOGRAPH	NO	NO
HEAT TREAT, TEMP. °F		
HEAT TREAT, TIME		
QUENCH		
Δ SEE PFAUDLER LITERATURE FOR LIMITATIONS		

(17/8)

1	3166120
4	3103120
13	1360040
14	1360040
15	1502094
16	1606835
17	1602781
17	1600369
	BOLT 3/4"
	HEX. N



WELD IN AL ASSY 6

JKT LIFTING LUG

NOTE:-
 SET STOPS FOR 117/41
 AGIT. SPEEDS.
 MAX. OPERATING PRL
 SINGLE SEAL IS 25
 AT 250°F

REMOVE FROM TOP
 HEAD BEFORE SHIPPING

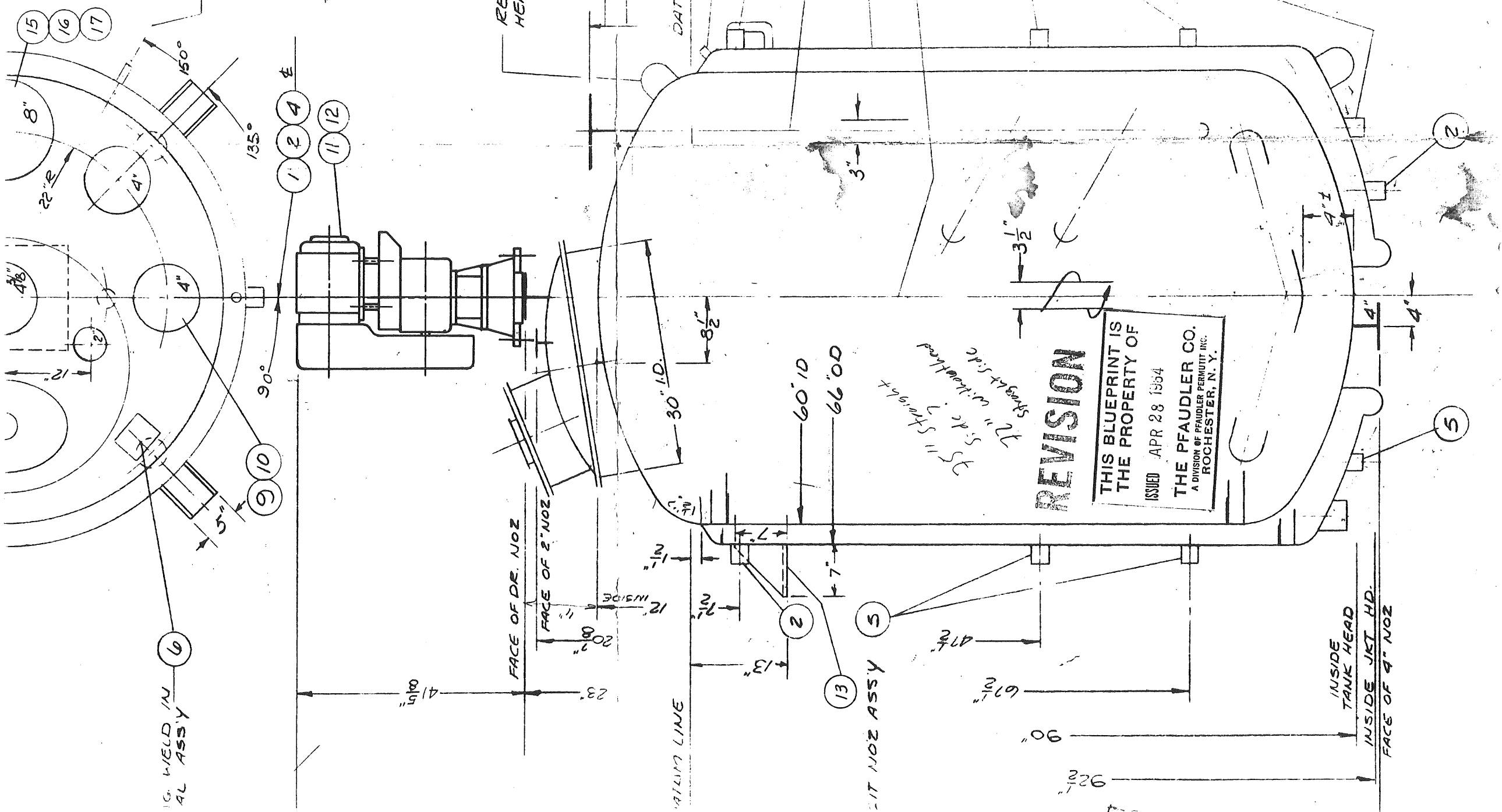
12 1/4" 4" NOZ
 13 3/4" 8" NOZ

DATUM LINE

- 1 1/2" CRIG W/PLD
- 2 (4) 2" CRIGS W/L
- 9 10
- 3 JCV ASSY
- 23 40/117 R.P.M. APPROX

- 4 (3) 1/2" CRIGS

ALL NOZZLES FURN
 WITH LOOSE SPLI
 150 LB. ASA DRI
 EXCEPT 300" ON 2



REVISION
 THIS BLUEPRINT IS
 THE PROPERTY OF
 ISSUED APR 28 1954
 THE PFAUDLER CO.
 A DIVISION OF PFAUDLER PERMITIT INC.
 ROCHESTER, N. Y.

AGIT NOZ ASSY 5

INSIDE TANK HEAD
 INSIDE JKT HD.
 FACE OF 4" NOZ

FOR CORRECT ORIENTATION SEE PLAN VIEW