

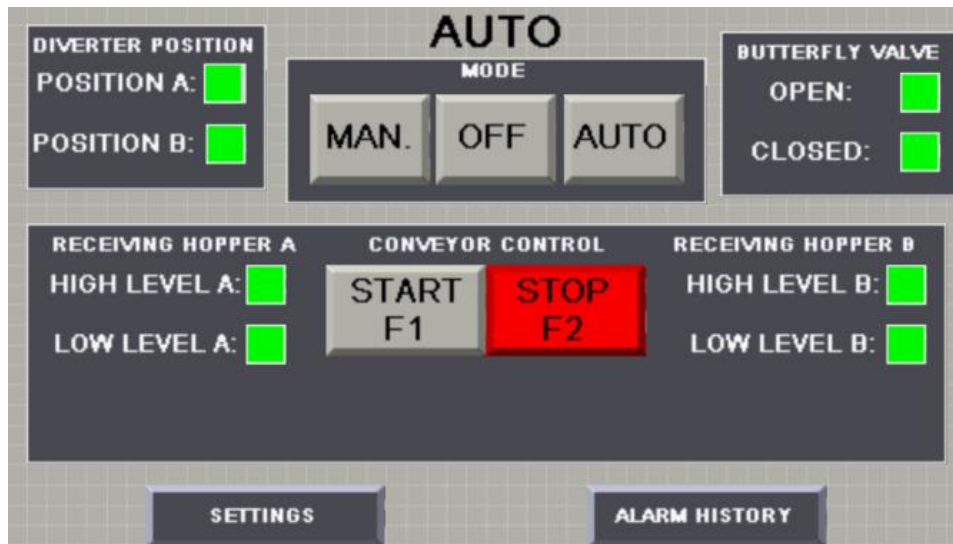


Green Gro

#98297

SR4 Controller with 4" HMI
Operating Instructions

Auto Screen:



1. Select Auto mode on the **MAN./OFF/AUTO buttons** at the top of the screen.
2. Start the conveyor by pressing the **START button** on the screen or by pressing the **F1** physical button below the screen. The conveyor will start, the **START button** will turn bright green.
3. Stop the conveyor by pressing the **STOP button** on the screen or by pressing the **F2** physical button below the screen.
4. Receiving hopper “A” is the default position of the diverter valve. Once the **HIGH LEVEL A SENSOR** is covered, the diverter valve will automatically begin to fill hopper “B” until **HIGH LEVEL B** is covered and will return to hopper “A” if it has depleted all material.
5. **DIVERTER POSITION** notifies the operator of which position the diverter valve is in.
6. **BUTTERFLY VALVE** notifies the operator of which position the butterfly valve is in. **NOTE: The butterfly valve is independent from the conveyor.**

The following conditions will cause the conveyor to stop:

Hopper Low Level Condition: If the low level sensor in the inlet hopper becomes uncovered the conveyor will stop to protect the conveyor from damage. “**LOW LEVEL SENSOR UNCOVERED**” will appear on the screen and the **START button** will flash. When the low level sensor is covered the conveyor will start again automatically.

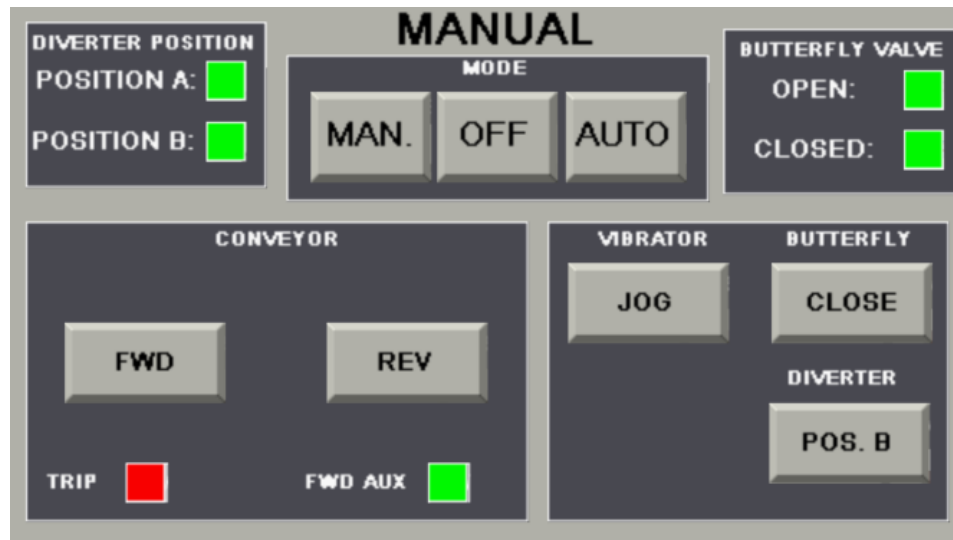
Receiving Hoppers are full: If both high level sensors in the receiving hoppers become covered and do not become uncovered, the conveyor will stop to prevent material spillage. All sensor levels will appear green on the screen, and the **START button** will flash. When either receiving hopper empties and material passes below the low level sensor in either hopper, the conveyor will start again automatically, filling material into the according hopper.

Diverter Valve Failed: If the diverter valve does not change position within the specified amount of time, the conveyor will stop and an alarm will appear on the screen. Press the Ack button to acknowledge the alarm.

Butterfly Valve Failed: If the butterfly valve does not change in position within the specified amount of time while the Bin Vent is running, an alarm will appear. Press the Ack button to acknowledge the alarm.

Conveyor MPCB Tripped: If the Conveyor motor circuit breaker trips the system will stop. The alarm banner will pop up with an alarm. Press the Ack button to acknowledge the alarm.

Manual Screen:



Select **MANUAL** mode on the **MAN./OFF/AUTO** buttons at the top of the screen. The screen will automatically change to the **MANUAL** screen.

Press and hold the **FWD** button to jog the conveyor forward. The **FWD AUX** indicator will turn green to confirm the motor contactor is pulled in. The **BREAKER** indicator will turn red if the conveyor motor circuit breaker is tripped.

Press and hold the **REV** button to jog the conveyor in reverse. **CAUTION: Remove the cleanout cap before jogging in reverse to avoid damage to the conveyor.**

Press and hold the **VIBRATOR JOG** button to jog the vibrator.

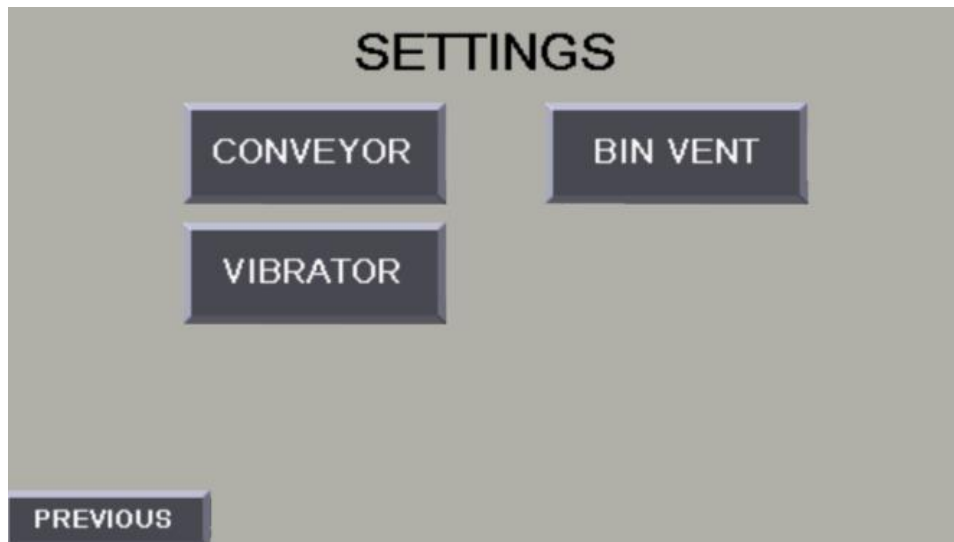
Press and hold the **BUTTERFLY CLOSE** button to close the butterfly valve.

Press and hold the **DIVERTER POS. B** button to change the diverter valve's position.

DIVERTER POSITION notifies the operator of which position the diverter valve is in.

BUTTERFLY VALVE notifies the operator of which position the butterfly valve is in.

Settings Menu Screen:



Press the **SETTINGS button** at the bottom of the **AUTO** screen to navigate to the **SETTINGS** screen.

Select the settings to change by pressing one of the navigation buttons, a full description of the settings is provided below.

PREVIOUS button: Press this button to navigate back to the Auto Screen.

Conveyor Settings:

CONVEYOR SETTINGS

LOW LEVEL ON DELAY (SEC)	LOW LEVEL OFF DELAY (SEC)	BATCH TIME (MINUTES)
<input type="text"/>	<input type="text"/>	<input type="text"/>
BUTTERFLY VALVE FAILTIME (SEC)	DIVERTER VALVE FAILTIME (SEC)	
<input type="text"/>	<input type="text"/>	

PREVIOUS

LOW LEVEL ON DELAY: the low level switch must be covered for this amount of time before the conveyor can start. Default time is 1.5 seconds.

LOW LEVEL OFF DELAY: After the low level switch becomes uncovered the conveyor will continue to run for this amount of time. Default time is 1.5 seconds. **CAUTION: Running the conveyor without material present can damage the spiral.**

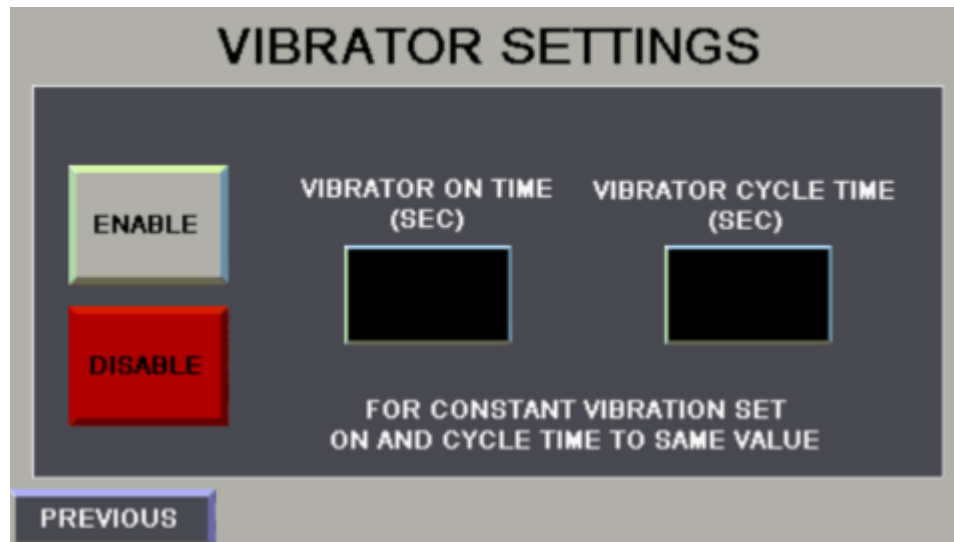
BATCH TIME: Enter a time value to put the conveyor into batch mode. After pressing the start button the conveyor will run for this amount of time and then stop automatically. To disable batching mode enter a time value of zero.

BUTTERFLY VALVE FAILTIME: Enter a time value for the valve to reach the correct position, if the valve does not reach the correct position in the set amount of time, an alarm will appear. The Butterfly valve will then open.

DIVERTER VALVE FAILTIME: Enter a time value for the valve to reach the correct position, if the valve does not reach the correct position in the set amount of time, an alarm will appear. The Diverter valve will default back to Position A and stop the conveyor.

PREVIOUS button: Press this button to navigate back to the Settings Screen

Vibrator Settings:



Press the **ENABLE** button to enable the vibrator. When the conveyor is running in Auto mode the vibrator will run. Press the **DISABLE** button to disable the vibrator.

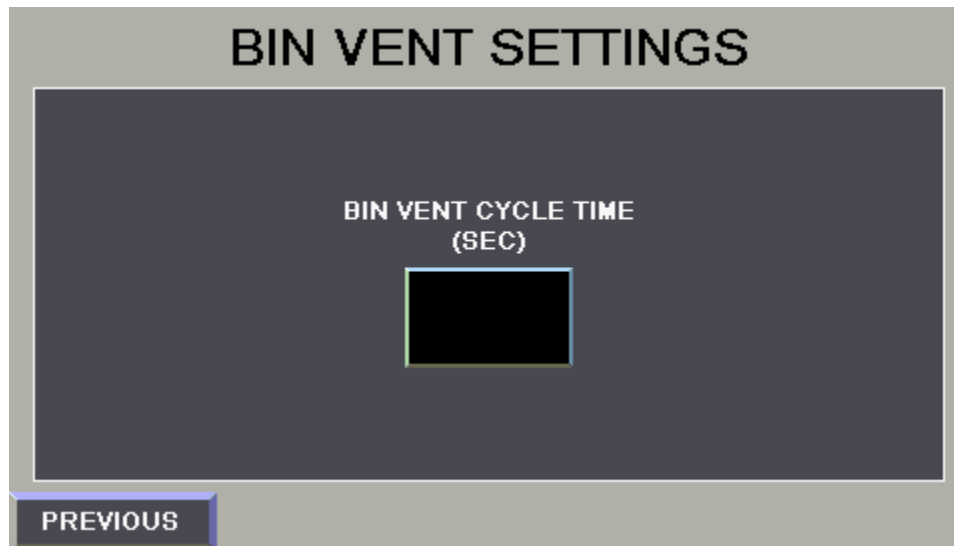
The **VIBRATOR ON TIME** input is used to set the time that the vibrator will be on during the cycle.

The **VIBRATOR CYCLE TIME** sets the total cycle time of the vibrator (on time + off time). Ex. If the cycle time is 10 seconds and the on time is 5 seconds, the vibrator will be on for 5 seconds and off for 5 seconds.

To set the vibrator to run continuously (not on a timed cycle) set the on time and cycle time to the same value.

PREVIOUS button: Press this button to navigate back to the Settings Screen.

Bin Vent Settings:



****NOTE: Make sure Butterfly Valve is a Normally Open valve.****

The **BUTTERFLY VALVE** will close when the Bin Vent is turned on. Material will collect in the Bin Vent until it is turned off, in which the valve will the open, dumping all gathered material into the inlet hopper.

The **BIN VENT CYCLE TIME** is the time between filter cleaning pulses of the Bin Vent. Default time is 90 seconds.

PREVIOUS button: Press this button to navigate back to the Settings Screen.

If the Bin Vent blower circuit breaker is tripped an alarm banner will appear and the Bin Vent cycle will stop. The circuit breaker must be reset to restart the Bin Vent.

Alarm History Screen:

Alarm Message	Ack Status	Alarm Time	Alarm Date
Alarm Message	Alarm Ack	Occurrence*	Occurrence*

Navigation buttons: PREVIOUS, [Down Arrow], [Up Arrow], ACK ALL

Press the **ALARM HISTORY** button at the bottom of the **AUTO** screen to navigate to the **ALARM HISTORY** screen.

Press the up and down arrow keys to scroll through the alarms.

The **Ack Status** column records whether each alarm was acknowledged.

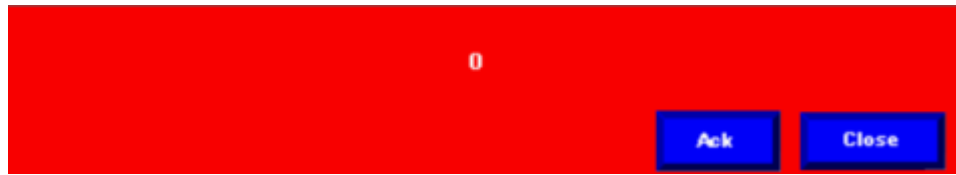
To acknowledge all alarms press the **ACK ALL** button.

The **Alarm Time** column records the time that each alarm occurred.

The **Alarm Date** column records the date that each alarm occurred.

PREVIOUS button: Press this button to navigate back to the Auto Screen.

Alarm Banner:



When an alarm condition occurs, the Alarms pop-up banner will display over top the current screen. Once the alarm condition is corrected, press the **ACK Pushbutton** to clear the alarm. The screen will then automatically close. You can also close the screen at any time by pressing the **CLOSE Pushbutton**.