

- GENERAL NOTES:**
1. ALL DIMENSIONS ARE IN INCHES AND GENERAL TOLERANCES ARE: FRACTIONS $\pm 1/8$, ANGLES $\pm 1^\circ$, UNLESS OTHERWISE NOTED.
 2. PAINT JACKET WITH THURMALOX 70.
 3. VESSEL WEIGHT EMPTY: 4102 LBS APPROX
 4. AGITATOR: B-16653
 5. HONEYWELL TEMPERATURE CONTROLLER TO WORK SOLENOID VALVES ON PIPING KIT ONLY IS SUPPLIED ON ITEM "2" OF THIS ORDER. (WIRING & INSTALLATION BY OTHERS)
 6. AUTOMATIC PIPING KIT W/ SOLENOID VALVES FOR HEATING & COOLING IS SUPPLIED ON ITEM "3" OF THIS ORDER. (C-9063 & C-9064) ASSEMBLY & INSTALLATION NOT INCLUDED.
 7. (2) 10 HP, 230V, 60C, 3PH NEMA-4 A.C. INVERTERS ARE SUPPLIED ON ITEM "4" OF THIS ORDER (MOUNTING & WIRING BY OTHERS)

DESIGN DATA

1. ASME SECTION VIII 2004	CODE SYMBOL "U"	JACKET INTERNAL	100 PSI
2. DESIGN AND TEST	DESIGN PRESSURE	DESIGN TEMPERATURE	338° F
	TEST PRESSURE	TEST TEMPERATURE	134 PSI

MATERIAL SPECIFICATIONS

CYLINDER	316L	AGITATOR	316L
HEAD	316L	COVER	316L
UNIFLOW	304	OUTLET	316
SHEATH	304	LEGS	304
		CHANNEL	316L
		SENSOR	316

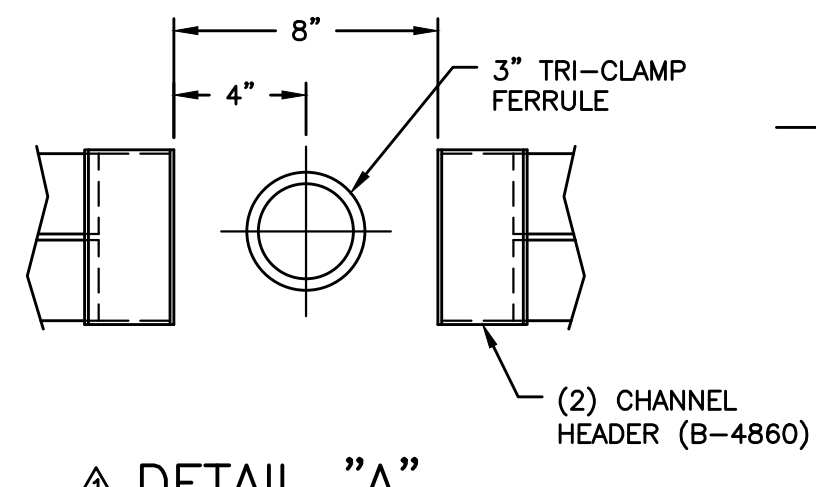
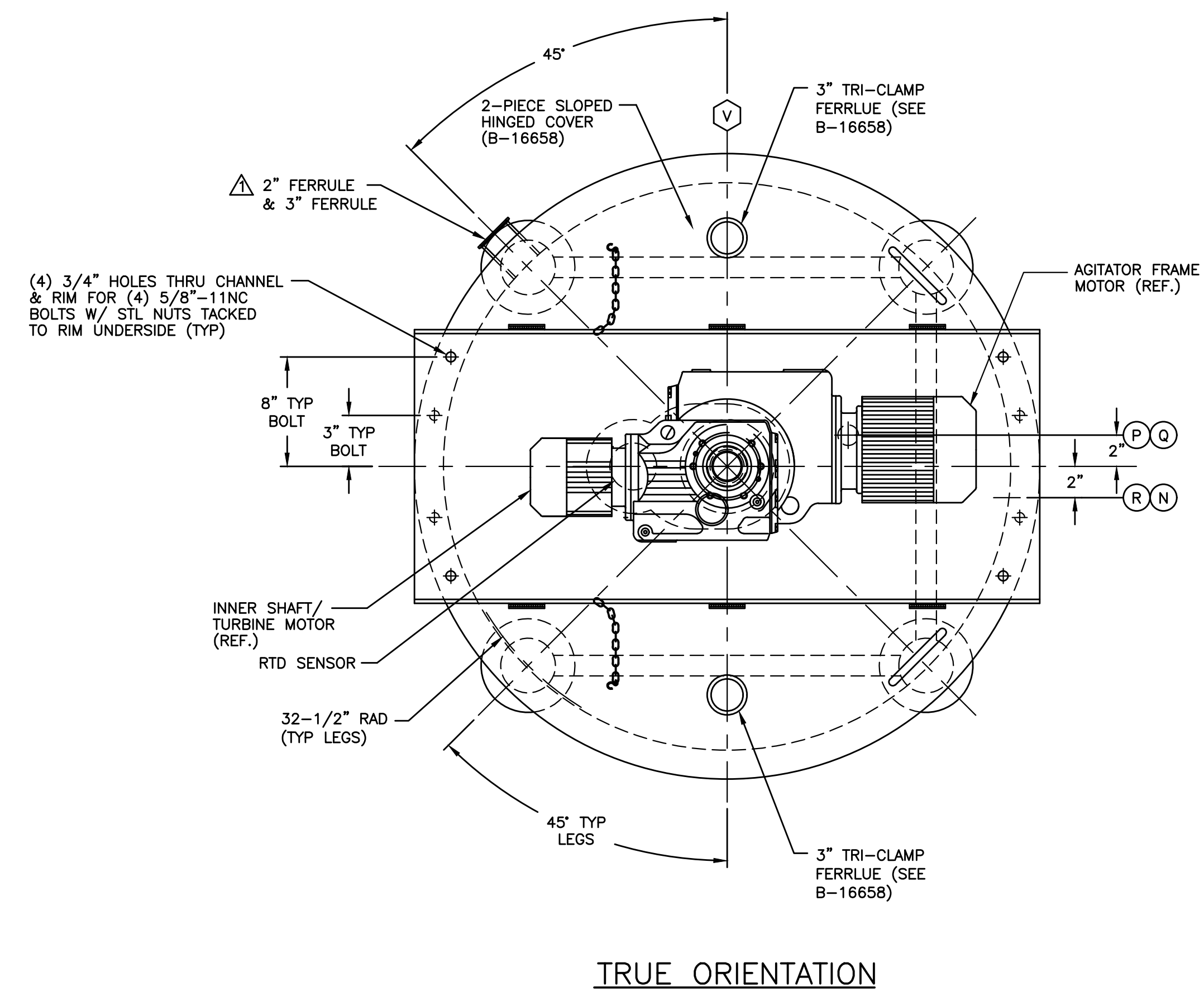
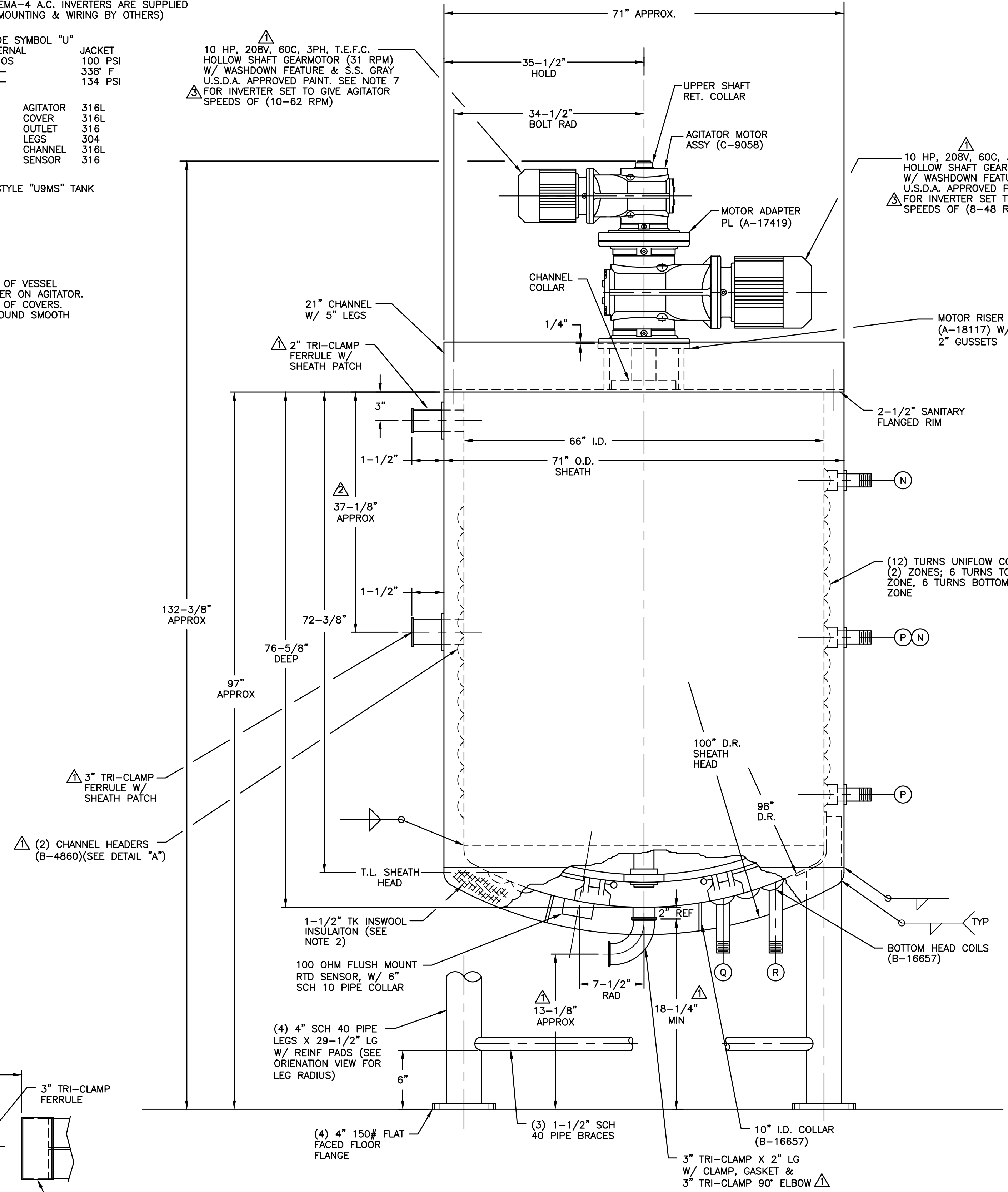
MODEL NO.: 1000 GALLON STYLE "U9MS" TANK

LEE SERIAL NO.: 41807-1

FINISH
 #4 FINISH (20-30 RA) ON INSIDE OF VESSEL SHELL, LESS THAN 6 RA W/ LUSTER ON AGITATOR.
 #4 FINISH (20-30 RA) ON INSIDE OF COVERS.
 #4 FINISH OUTSIDE W/ WELDS GROUND SMOOTH WHERE APPLICABLE.

JACKET NOZZLE SCHEDULE

MARK	SIZE	NO. REQ'D	REMARKS
N	1-1/2"	2	STEAM INLET/WATER OUTLET (NPT COUPLING W/ NIPPLE)
P	1-1/2"	2	CONDENSATE OUTLET/WATER INLET (NPT COUPLING W/ NIPPLE)
Q	1-1/2"	1	CONDENSATE OUTLET/WATER INLET (MALE NPT NIPPLE)
R	1-1/2"	1	STEAM INLET/WATER OUTLET (MALE NPT NIPPLE)



ELEVATION ONLY

THE CORROSION RESISTANCE OF THE EQUIPMENT IS NOT THE RESPONSIBILITY OF LEE INDUSTRIES, INC. WITHOUT WRITTEN ACCEPTANCE BASED ON A SPECIFIC SERVICE.
 THIS DRAWING IS THE PROPERTY OF LEE INDUSTRIES, INC. DO NOT PRINT, COPY, PHOTOGRAPH, DISCLOSE TO OTHERS, OR USE FOR ANY PURPOSE OTHER THAN THAT FOR WHICH IT IS SPECIFICALLY FURNISHED.
 LEE SERIAL NO.: 41807-1

ADDED NOTE 7

AS-BUILT
 3" FERRULE WAS 38" APPROX FROM RIM
 OUTLET WAS 2" BFT W/ EXT HANDLE, MOTOR VOLTAGE WAS 230/460V & ADDED 3" TRI-CLAMP FERRULE IN SIDEWALL

12-9 D.S./SRT
 11-18 -05 D.S./SRT
 10-18 -05 D.S./SRT

PROCESS SYSTEMS & EQUIPMENT
 DIVISION OF LEE INDUSTRIES, INC.
 PHILIPSBURG, PA.

1000 GALLON STYLE "U9MS" TANK

SCALE: NONE	DATE: 10-11-05
DRAWN BY: STRICEK	DRAWING NO. D-1713
APPROVED BY: JEB	REV. 3

PLOT: 1"=1"