

APPROVED AS DRAWN; RELEASE FOR CONSTRUCTION

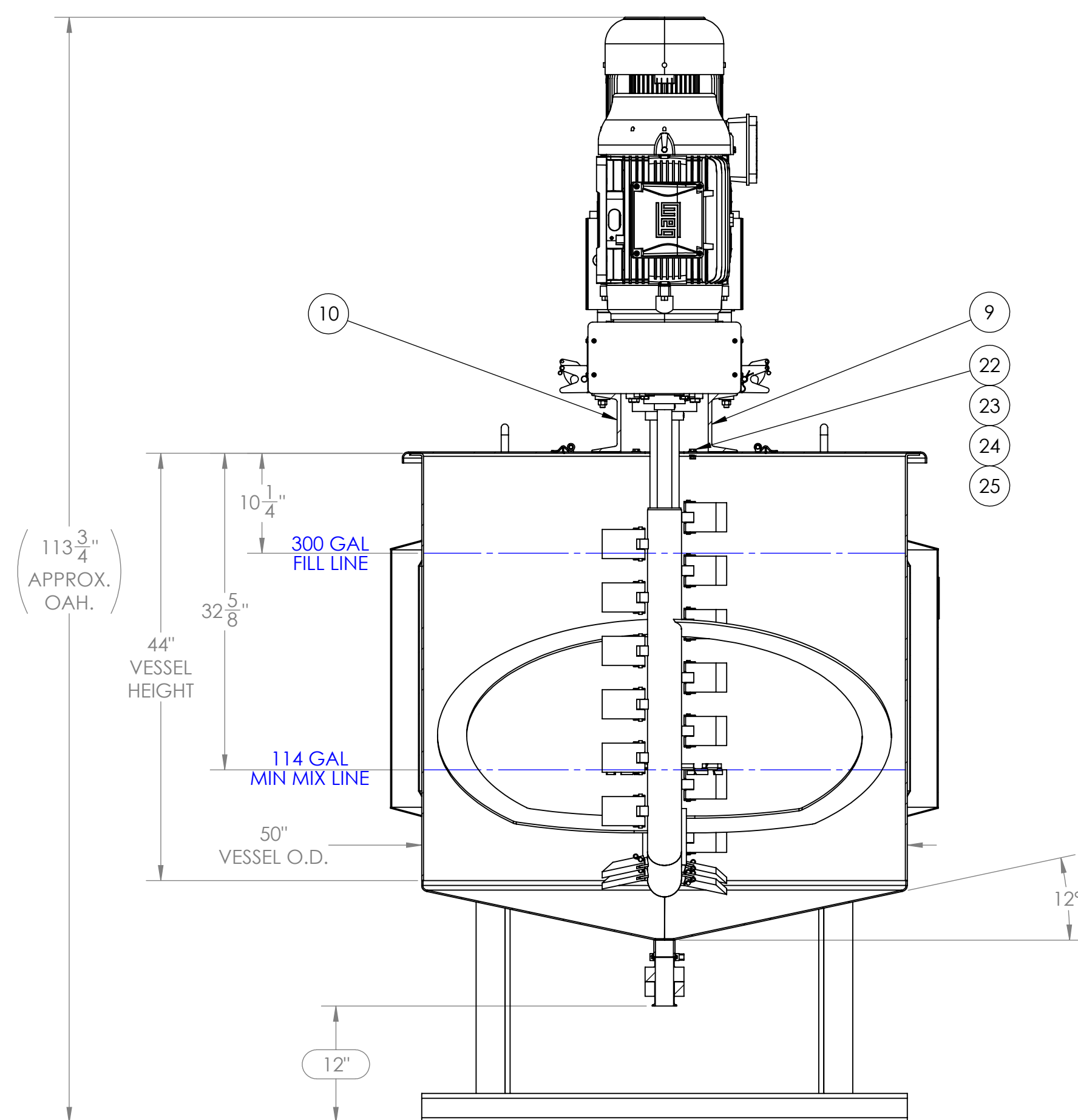
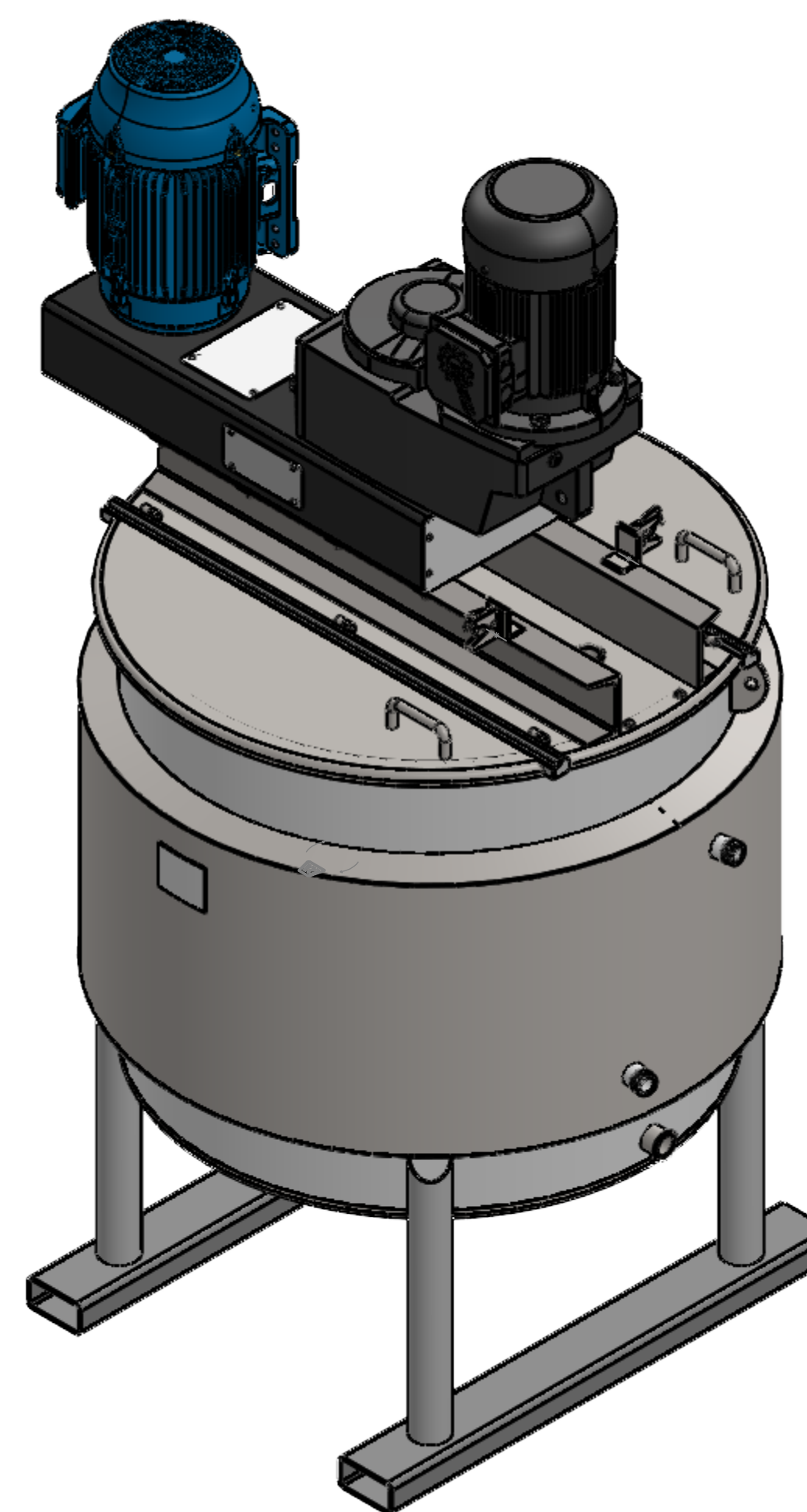
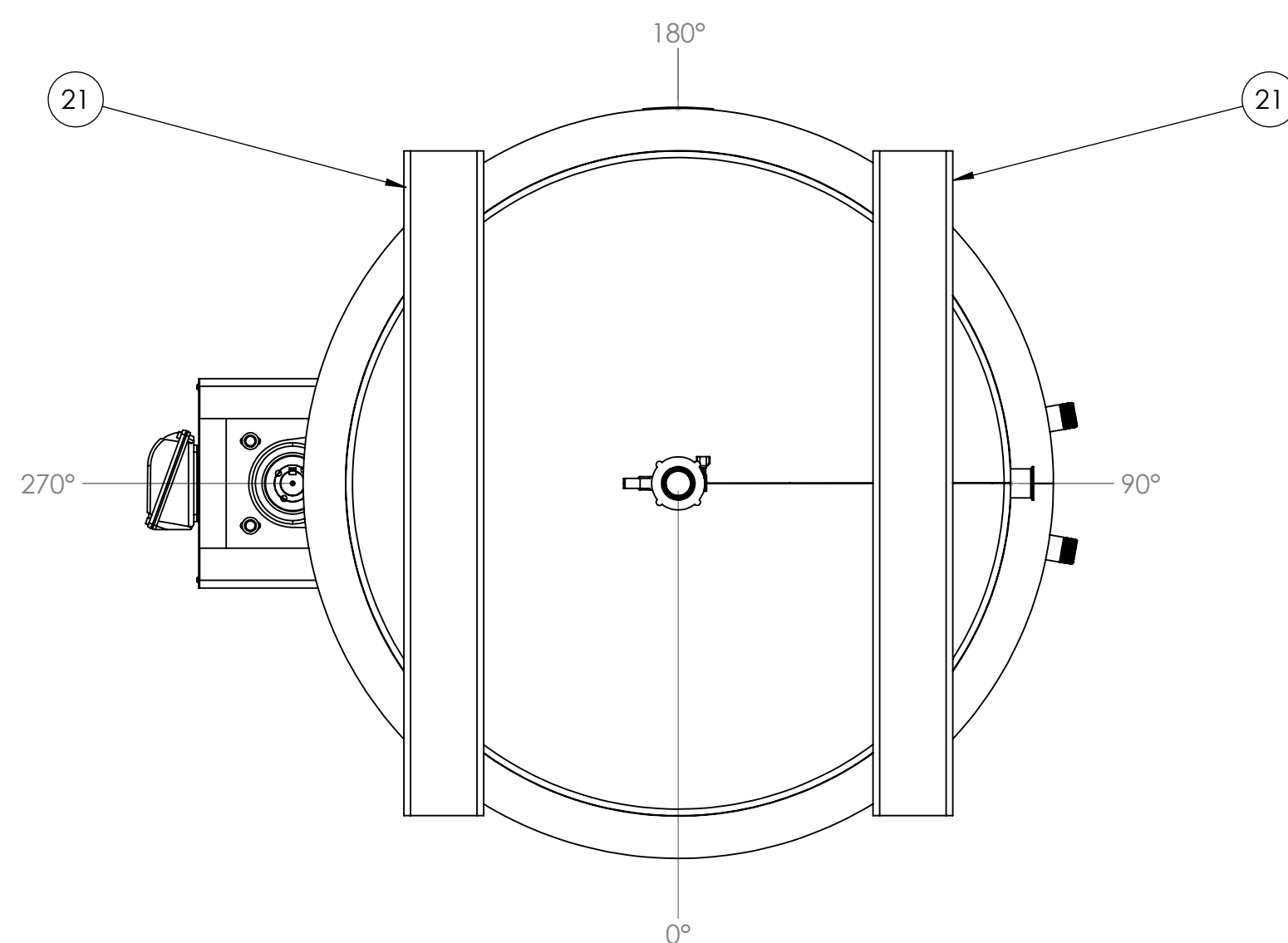
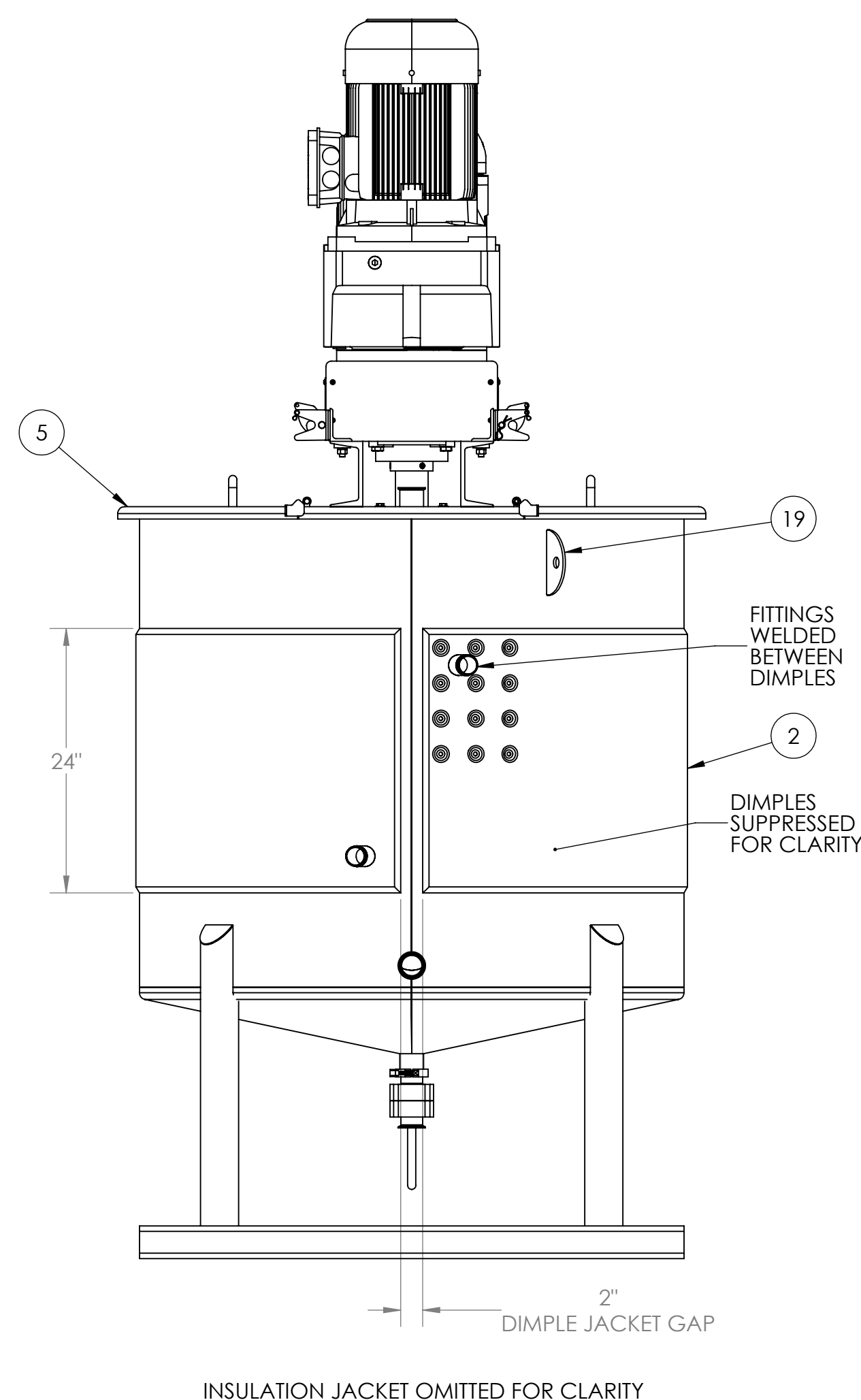
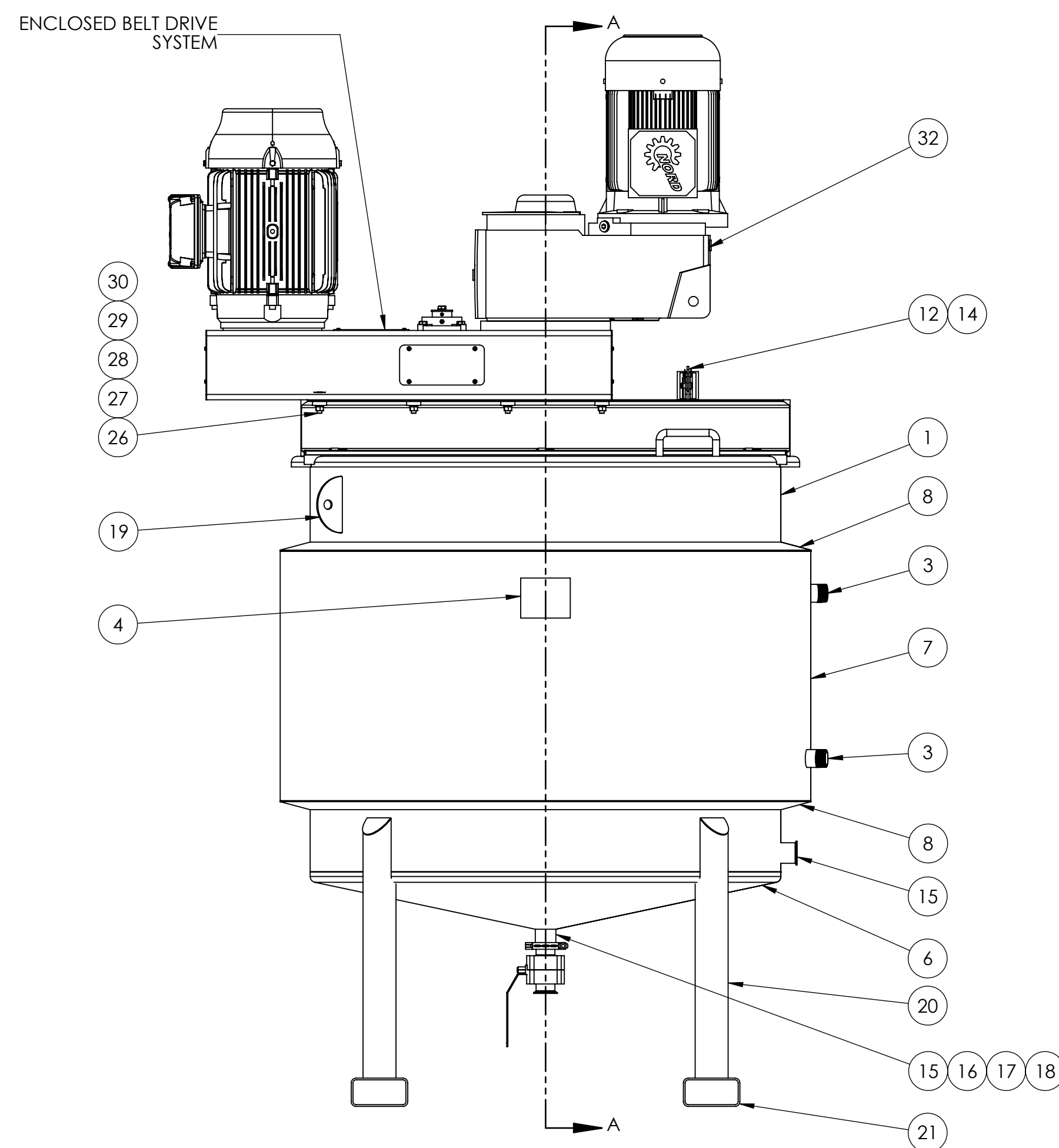
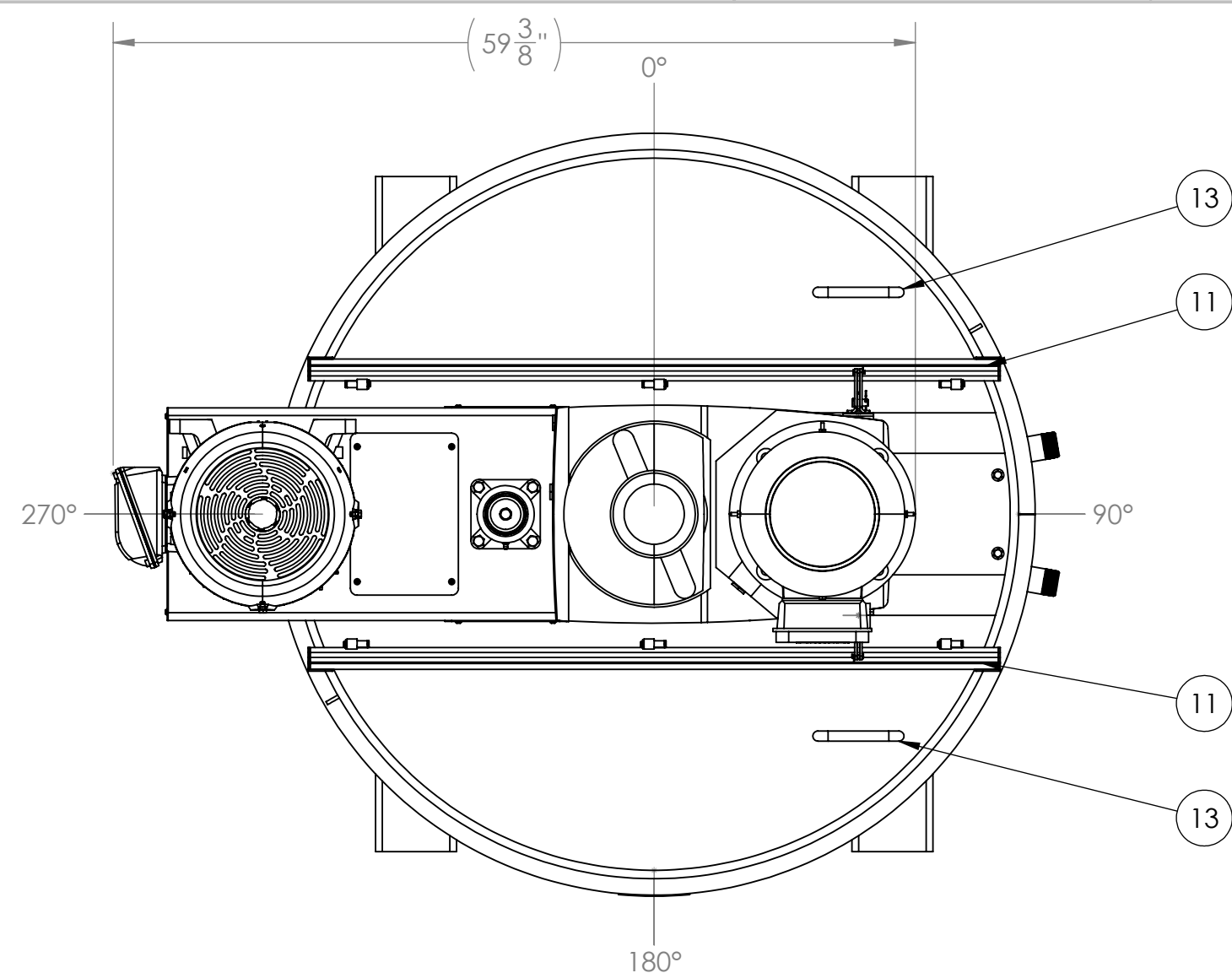
REJECTED; REVISE AND RESUBMIT

SIGNATURE: DATE: *NOTE THAT PRICE MAY BE AFFECTED BY THE CHANGES

MAXIMUM FASTENER TORQUE		
NOM. SIZE	ASTM F593	SAE J429 GR. 5
#10	20	31
#12	29	49
1/4	62	76
5/16	125	156
3/8	19	23
7/16	30	36
1/2	46	57
5/8	92	113
3/4	113	200
7/8	182	322
1	273	483

VALUES LISTED ARE FOR COARSE THREAD LUBRICATED FASTENERS, 5/16" AND LESS IN INCH, 3/8" AND LARGER IN FOOT LBS.

NB	266
NATIONAL BOARD NO.	
CERTIFIED BY:	
MXD PROCESS	
JEFFERSONVILLE, IN USA	
UM	MDMT -20 °F AT 90 PSI
VESSEL MAWP	N/A PSI AT N/A °F
JACKET MAWP	90 PSI AT 350 °F
YEAR [2022]	S/N S07306-002
VESSEL VOLUME	300 GALLON
WETTED MATERIAL	316 SS



SECTION A-A

NOTES:

- INTERIOR FINISH REQUIREMENTS:
 - #4 FINISH WITH ALL SURFACES GROUND SMOOTH, POLISHED, AND BUFFED. ALL SEAMS FULLY WELDED.
- EXTERIOR FINISH REQUIREMENTS:
 - #4 FINISH WITH ALL SURFACES GROUND SMOOTH, POLISHED, AND BUFFED. ALL SEAMS FULLY WELDED.
- VESSEL TO BE WELDED FOLLOWING THE LATEST REVISION OF WPS-0001 (GMAW-P) AND/OR WPS-0002 (GTAW).
- TAPER OF UNEQUAL THICKNESSES PER FIGURE UW-9-1 KEEPING INSIDE WALL OF VESSEL FLUSH.
- ALL NOZZLES TO BE WELDED AT FULL HEIGHT EXTENSION UNLESS OTHERWISE NOTED.
- NOZZLES ARE NOT DESIGNED FOR EXTERNAL LOADINGS OF ANY KIND UNLESS OTHERWISE NOTED.
- EXPOSED CARBON STEEL TO BE PAINTED BLACK WITH URETHANE TOP COAT. ALL UNDIMENSIONED EDGES ARE BROKEN, UNLESS OTHERWISE SPECIFIED.
- SEE RECOMMENDED BATCH SIZES LISTED. RUNNING MIXER WITH IMPELLERS SPLASHING OR LIQUID LEVEL TOO CLOSE ABOVE AN IMPELLER CAN CAUSE DAMAGE TO MIXER.
- TANK IS NOT RATED FOR PRESSURE.
- FAILURE TO ADEQUATELY VENT THE VESSEL WHILE FILLING OR EMPTYING MAY CREATE PRESSURE OR VACUUM WHICH COULD RESULT IN DAMAGE TO THE VESSEL.
- DIMPLE JACKET ONLY IS ASME CODE STAMPED.
- ASME PRESSURE RELIEF VALVE IN LINE BY OTHERS.
- LIFTING LUGS ARE DESIGNED FOR USE ONLY WHEN TANK IS EMPTY.
- LIQUID DYE PENETRANT REQUIRED ON ALL INTERIOR VESSEL WELDS FOLLOWING DOCUMENT MXD-QA-1P.
- S/N: [SALES ORDER NUMBER]-[XXX]
 - WHERE [XXX] = 001 FOR THE FIRST VESSEL ON THE SALES ORDER, 002 FOR THE SECOND VESSEL, ETC.
 - APPEND -A-, -B-, -C-, ETC WHEN QUANTITY IS GREATER THAN 1
- FOR ADDITIONAL INFORMATION, REFERENCE MXD SALES ORDER S07306 / CURLMIX INC.

ITEM NO.	DESCRIPTION	MATERIAL	QTY.
1	FLANGED SHELL - 50.0" OD X 44.0" SS HEIGHT, 7 GAGE, 1.25" FLANGE, 45.5" PRE-FLANGE SS, 14" COIL LENGTH	SA240-316L, HEAT CODE ID W/ MTRS	1
2	SHELL DIMPLE JACKET - 50.000" ID X 24.000" TALL, 3.250" SPACING, 1/2" WELD HOLE, 1/4" PILLOW HT, 14 GAGE, STYLE 3, APPROX. 25.8 SQUARE FEET NEEDED	SA240-304, HEAT CODE ID W/ MTRS	1
3	PIPE NIPPLE - 1.5" S40 MNPT X 5" LONG, THREADED ONE END	SA312-316 SMLS, HEAT CODE ID W/ MTRS	2
4	MXD PROCESS ASME NAMEPLATE - 5.25" X 4.25" X .105"	SA240-316L, HEAT CODE ID W/ MTRS	1
5	STANDARD FLAT HEAD - 54.00" OD, .63" KR, .50" SF, 10 GAGE, 55.00" ODF X 7.5" CH, 26.875" RI	316 SS	1
6	FLANGED CONE - 50.000" OD X 12" ANGLE, .625" KR, .500" SF, 10 GAGE, 52.00" ODF X 7.50" CH, 25.500" RI	316 SS	1
7	SHELL - 56.38" OD X 26.500" SS HEIGHT, 12 GAGE, 16 FT COIL LENGTH	316 SS	1
8	INSULATION JACKET ANGLED CLOSURE RING, 56.38" OD X 50" ID, 15" ANGLE, 12GA	316 SS	2
9	CHANNEL - C6 X 16.3# - 6" X 3" X 3/8" THICK - 56" OAL	STAINLESS STEEL	1
10	CHANNEL - C6 X 16.3# - 6" X 3" X 3/8" THICK - 56" OAL	STAINLESS STEEL	1
11	SANITARY HINGE ASSEMBLY, 3-HINGE, CUT TO LENGTH	316 SS WETTED	2
12	CUSTOM LATCH HOOK, FOR Ø.75" ROD, WELD-ON TYPE	316 SS	2
13	Ø.25" LATCH ROD	316 SS	2
14	ANGLE IRON - 3" X 2" X .25" THICK - 2.25" OAL	316 SS	2
15	TRICLAMP - 2" FERRULE X 1.75" LONG, HEAVY WALL, .165" THK, 2.19" OD	316 SS	3
16	TRICLAMP - 2" GASKET	PTFE	1
17	TRICLAMP - 2" WING NUT CLAMP	316 SS	1
18	TRICLAMP - 2" BALL VALVE	316 SS	1
19	LIFTING LUG - D STYLE 6.00" WIDE X 3.0" TALL X .25" THICK, 1.00" CH	316 SS	2
20	PIPE LEG - 3" S40S, 40" LONG	304 SS	4
21	FORK TRUCK POCKET - 6" X 3" X 3/16" RECTANGULAR TUBING, 50" LONG	304 SS	2
22	3/8"-16 X 1" HEX BOLT	STAINLESS STEEL	4
23	3/8" FLAT WASHER	STAINLESS STEEL	4
24	3/8" SPLIT LOCK WASHER	STAINLESS STEEL	4
25	3/8"-16 HEX NUT	STAINLESS STEEL	4
26	1/2"-13 X 2.25" HEX BOLT	STAINLESS STEEL	8
27	1/2" FLAT WASHER	STAINLESS STEEL	8
28	1/2" BEVEL WASHER	STAINLESS STEEL	8
29	1/2" SPLIT LOCK WASHER	STAINLESS STEEL	8
30	1/2"-13 HEX NUT	STAINLESS STEEL	8
31	INSULATION - 2" THICK (NOT SHOWN), APPROX 42.5 SQUARE FEET NEEDED	MINERAL FIBER	1
32	CUSTOM TOP ENTRY MIXER - 15 HP ANCHOR MIXER - 30 HP DISPERSER MIXER AND DRIVE SYSTEM	AS NOTED	1

UNLESS OTHERWISE SPECIFIED: DIMENSIONS ARE IN INCHES (mm)	NAME	DATE	PART NO.
TOLERANCES:	CLC	10/4/2022	SYS6A-C00300-24010
MACHINING: X ± .3	APP. BY	KSC	CUSTOMER
X ± .1			CURLMIX INC.
X ± .05	ANGLE, ALL ± .1°		

PROPERTY AND CONFIDENTIAL: THE INFORMATION CONTAINED IN THIS DRAWING IS THE SOLE PROPERTY OF MXD PROCESS. ANY REPRODUCTION IN PART OR AS A WHOLE WITHOUT THE WRITTEN PERMISSION OF MXD PROCESS IS PROHIBITED.

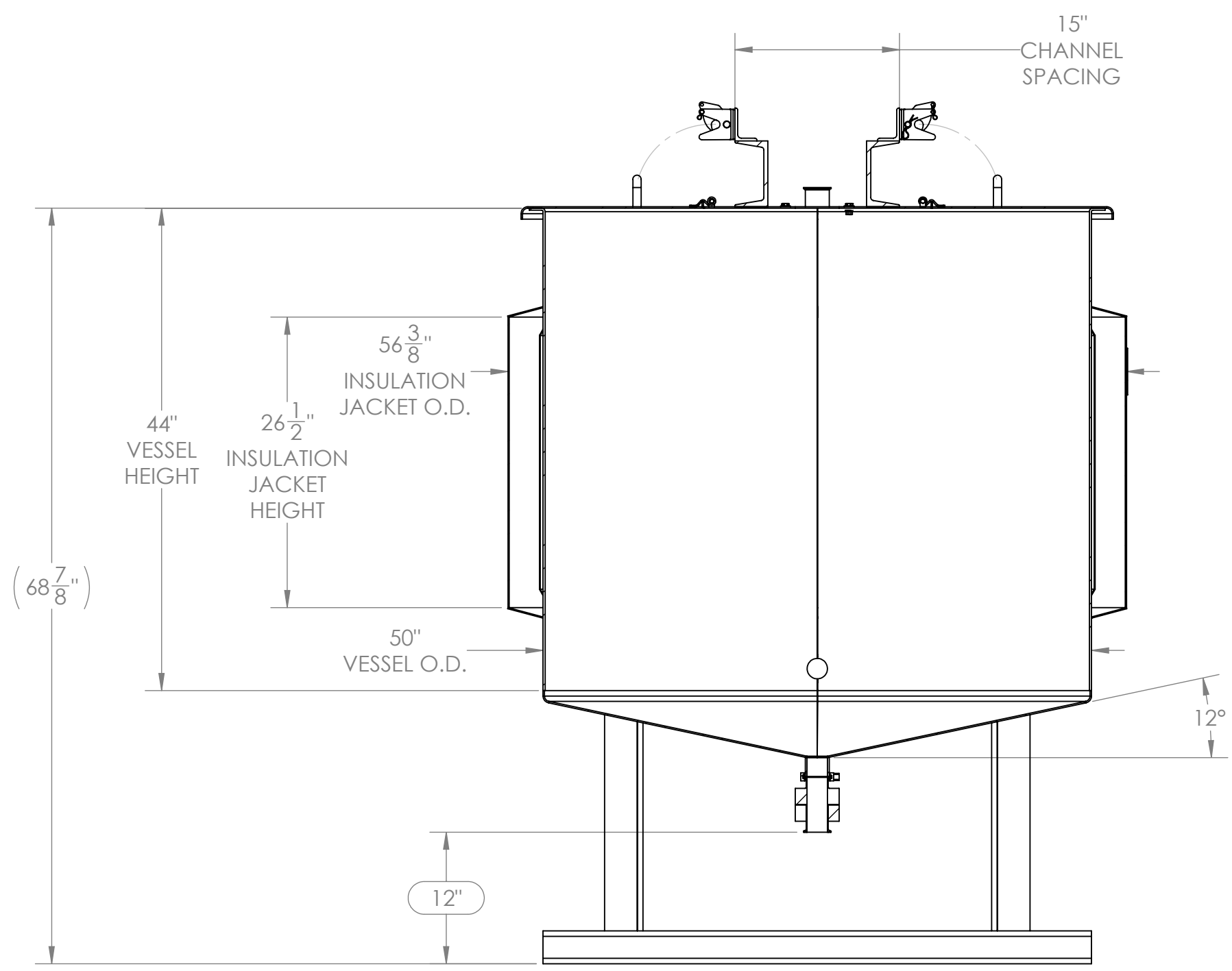
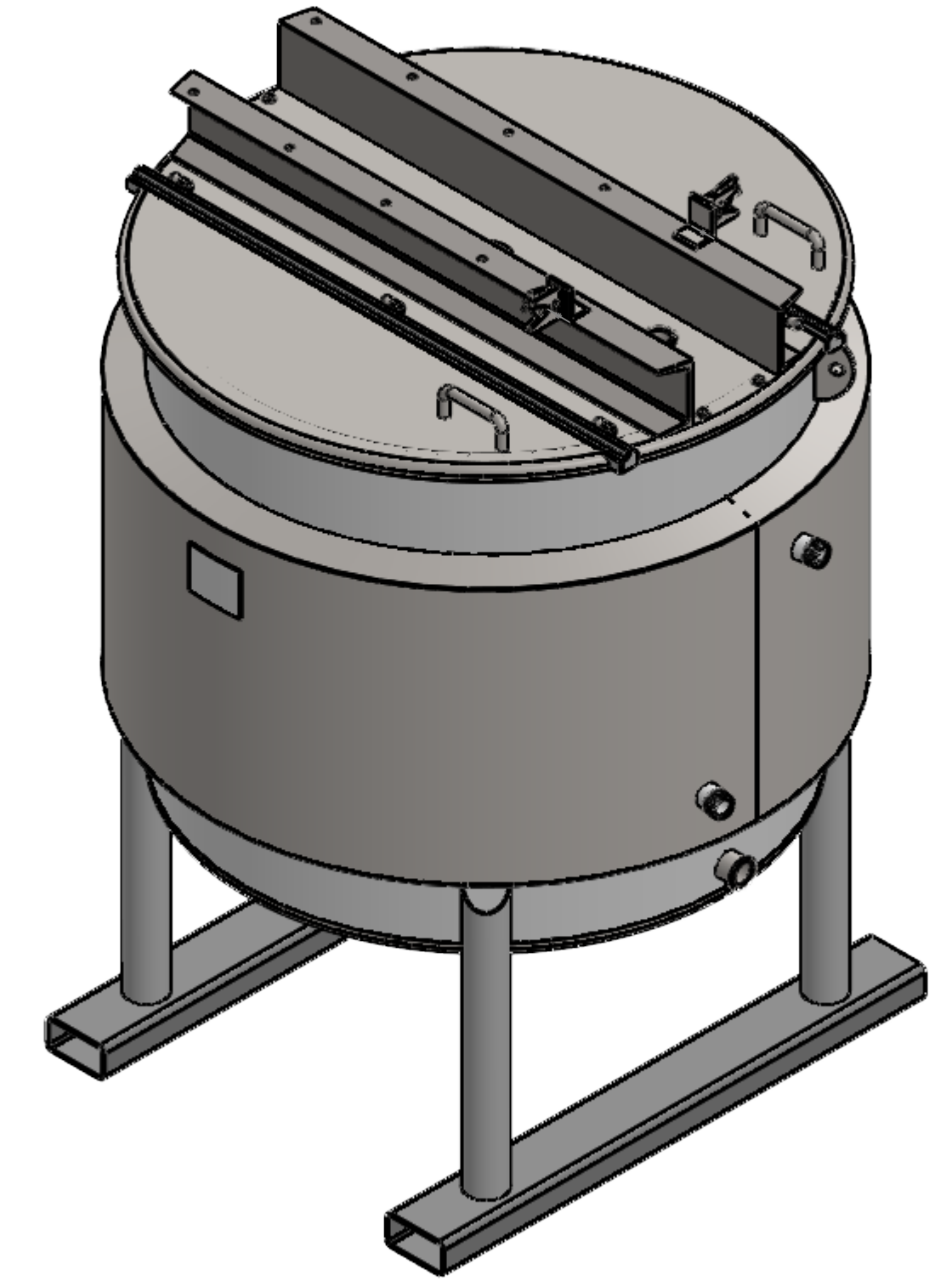
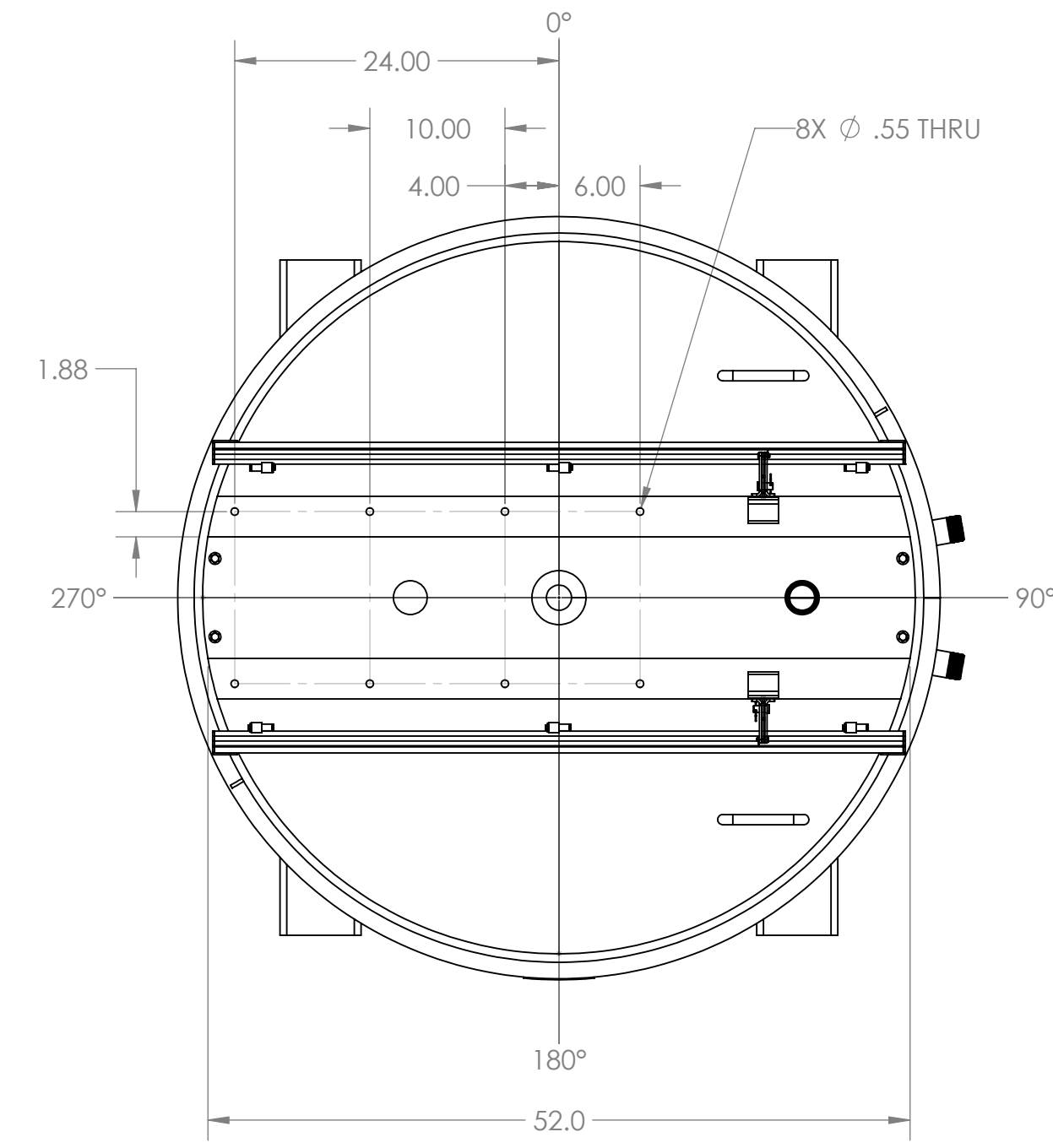
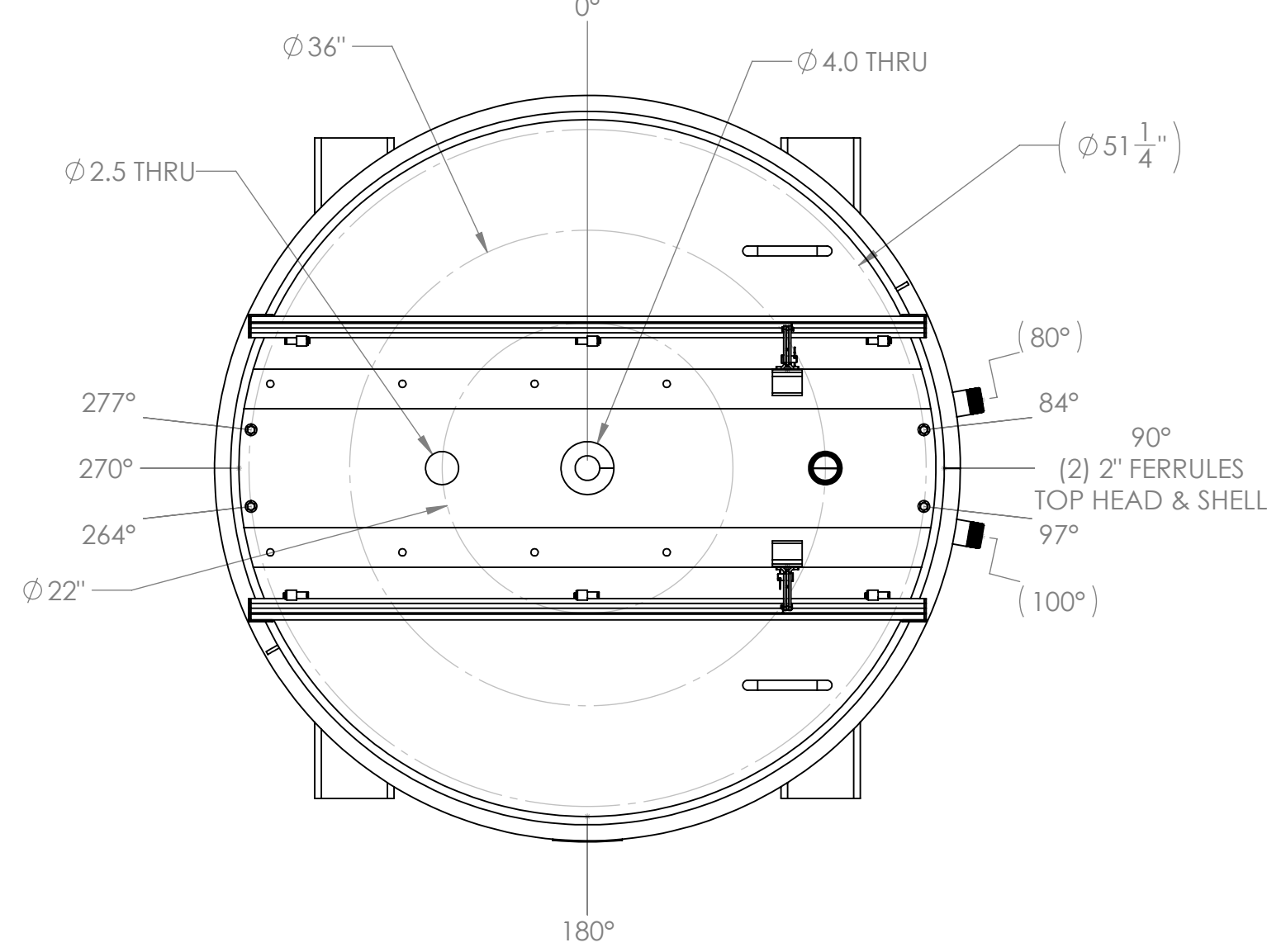
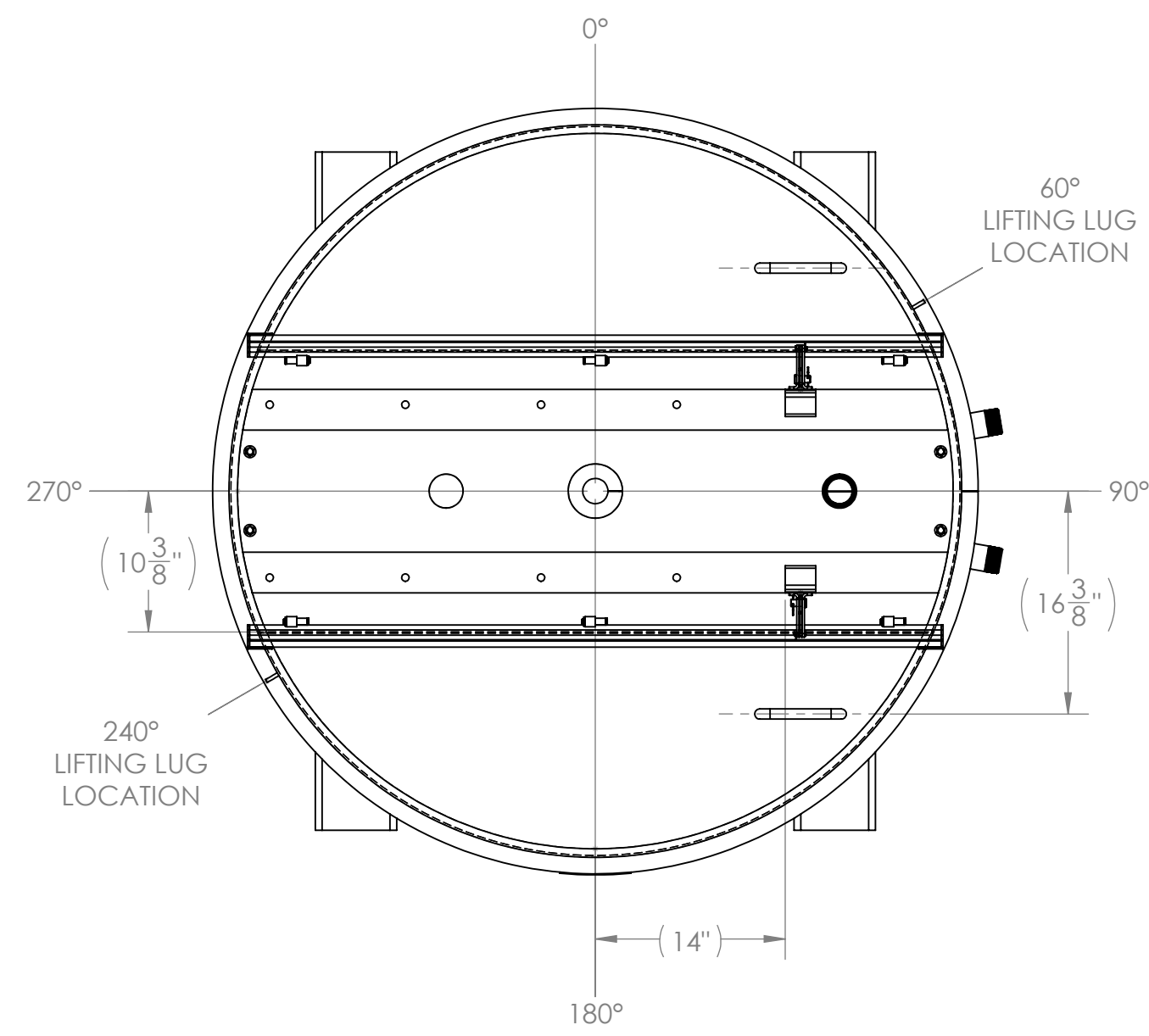
4650 NEW MIDDLE ROAD
JEFFERSONVILLE, IN 47130 USA
SALES@MXDPROCESS.COM
PHONE: (812) 222-4847
FAX: (888) 811-4823

TITLE: 300 GALLON SYSTEM, CONE BOTTOM, 15 HP ANCHOR, 30 HP DISPERSER

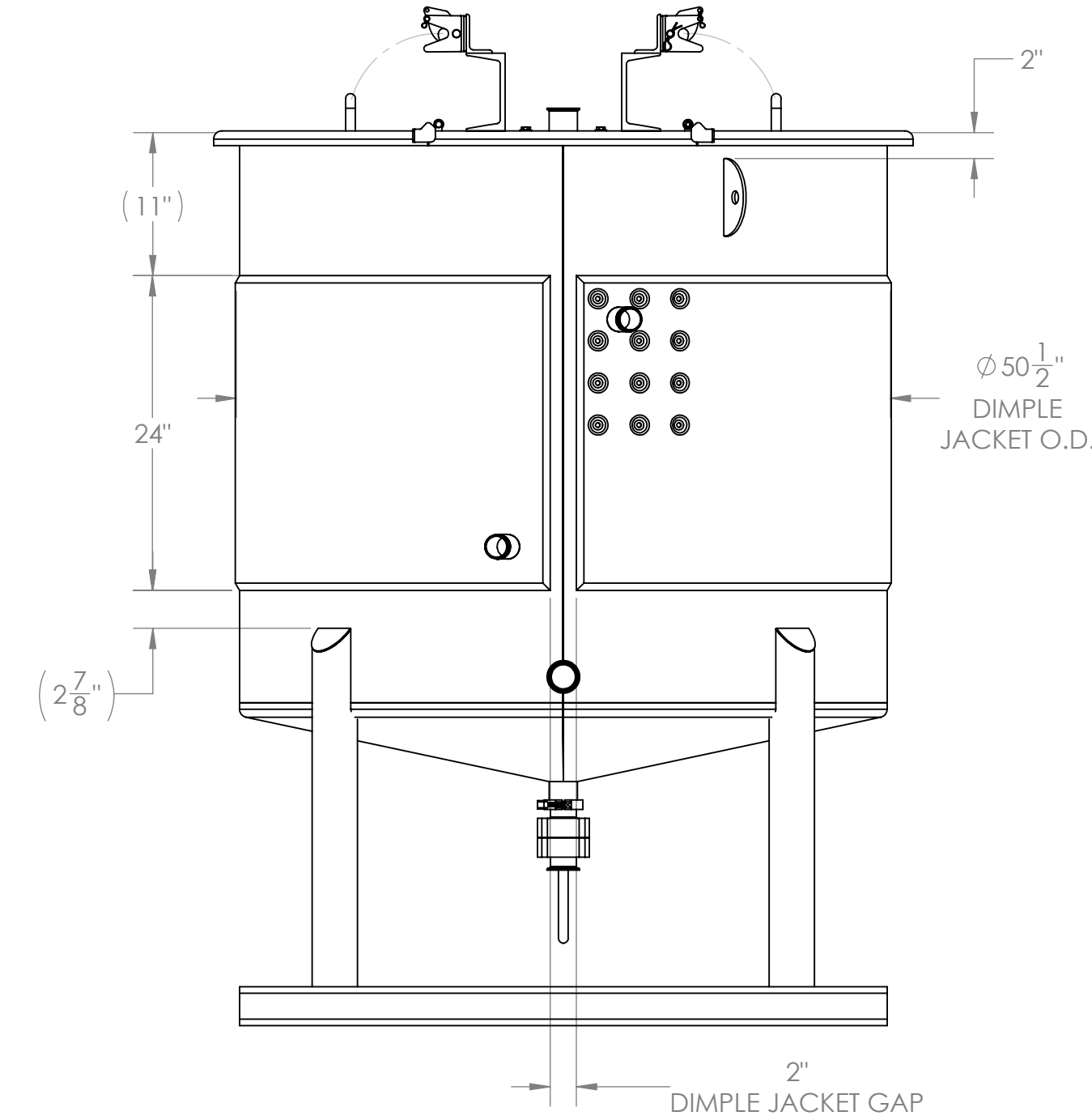
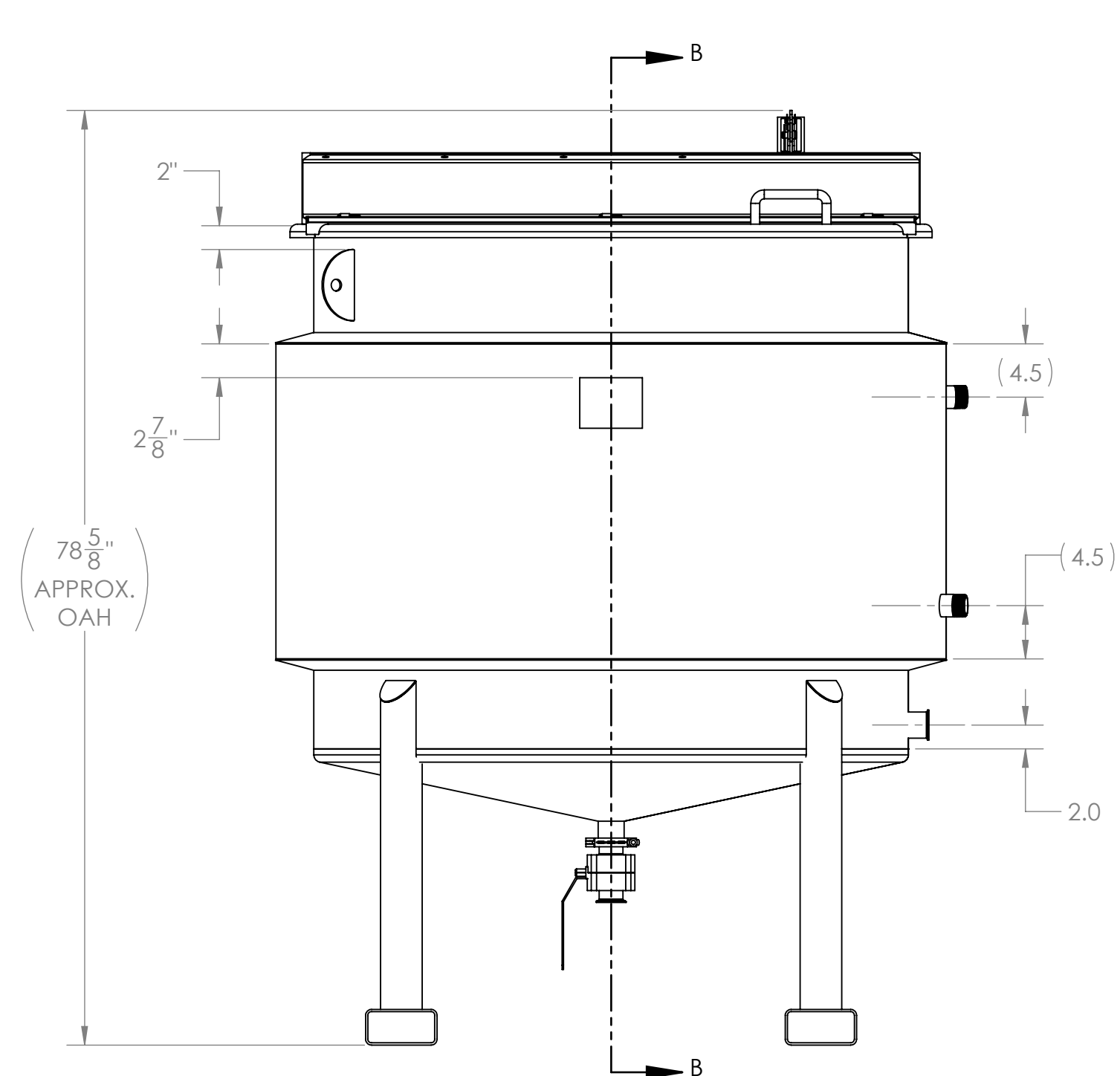
DWG. NO. S07306-002

SCALE: 1:12 WEIGHT (LBS): 2996 SHEET 1 OF 4

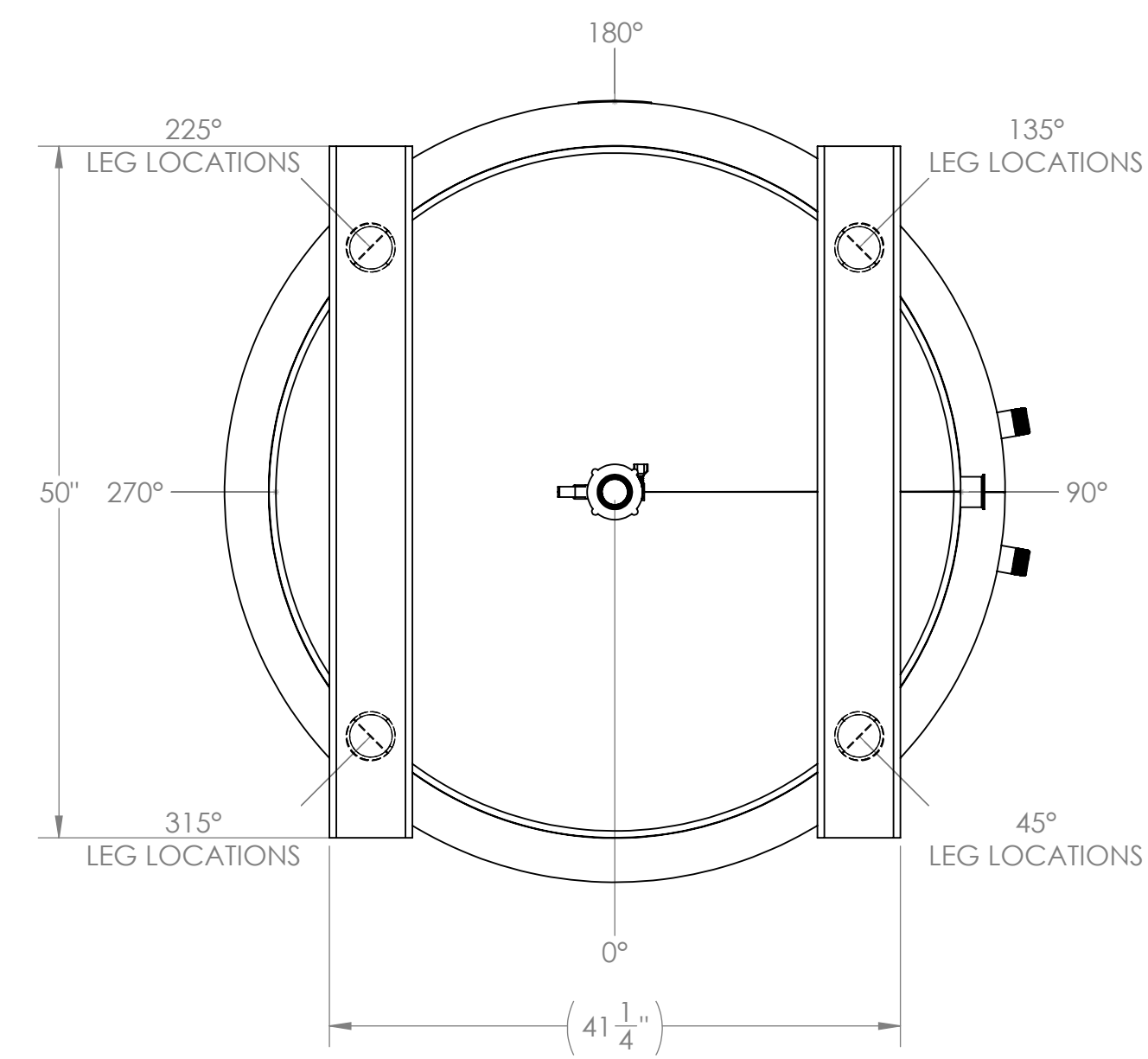
REVISIONS				
REV.	DESCRIPTION	DATE	REV. BY	APPROVED



SECTION B-B



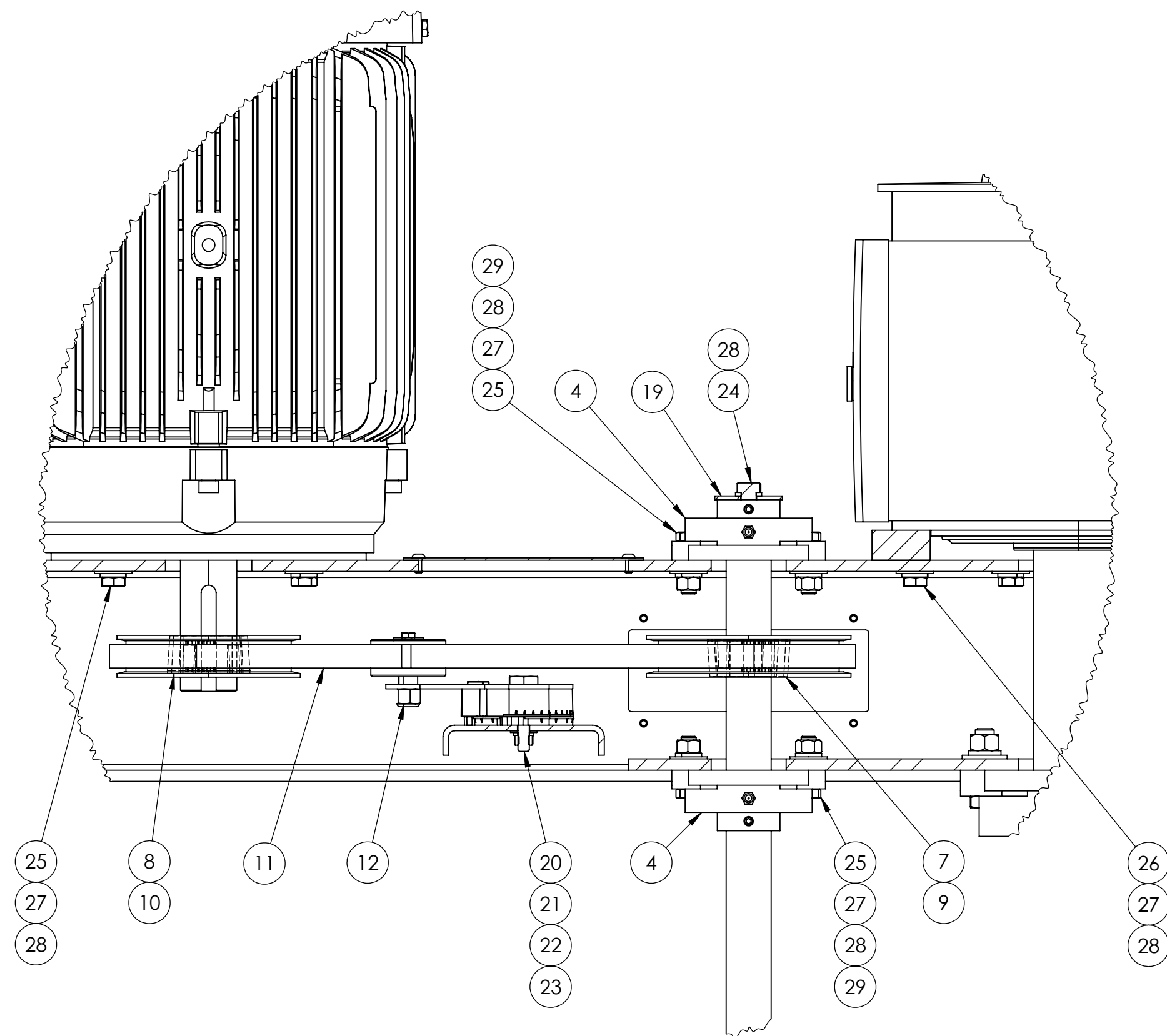
INSULATION JACKET OMITTED FOR CLARITY



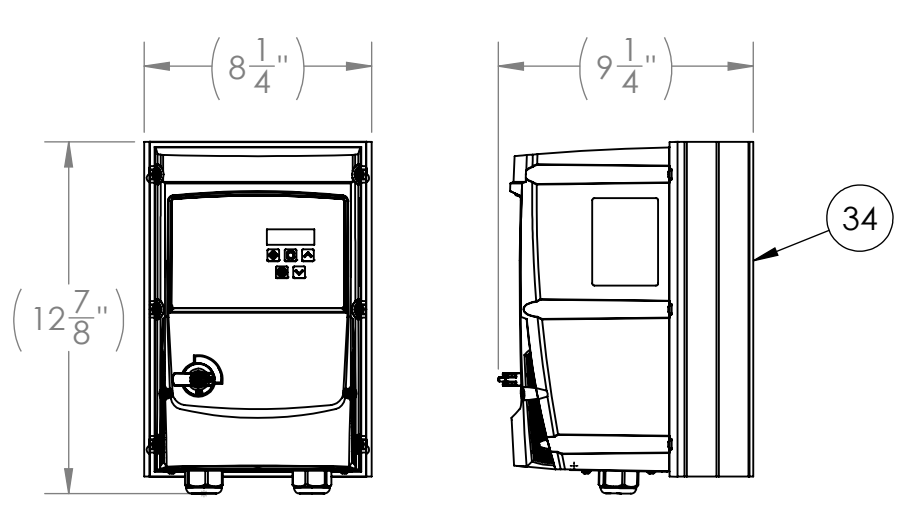
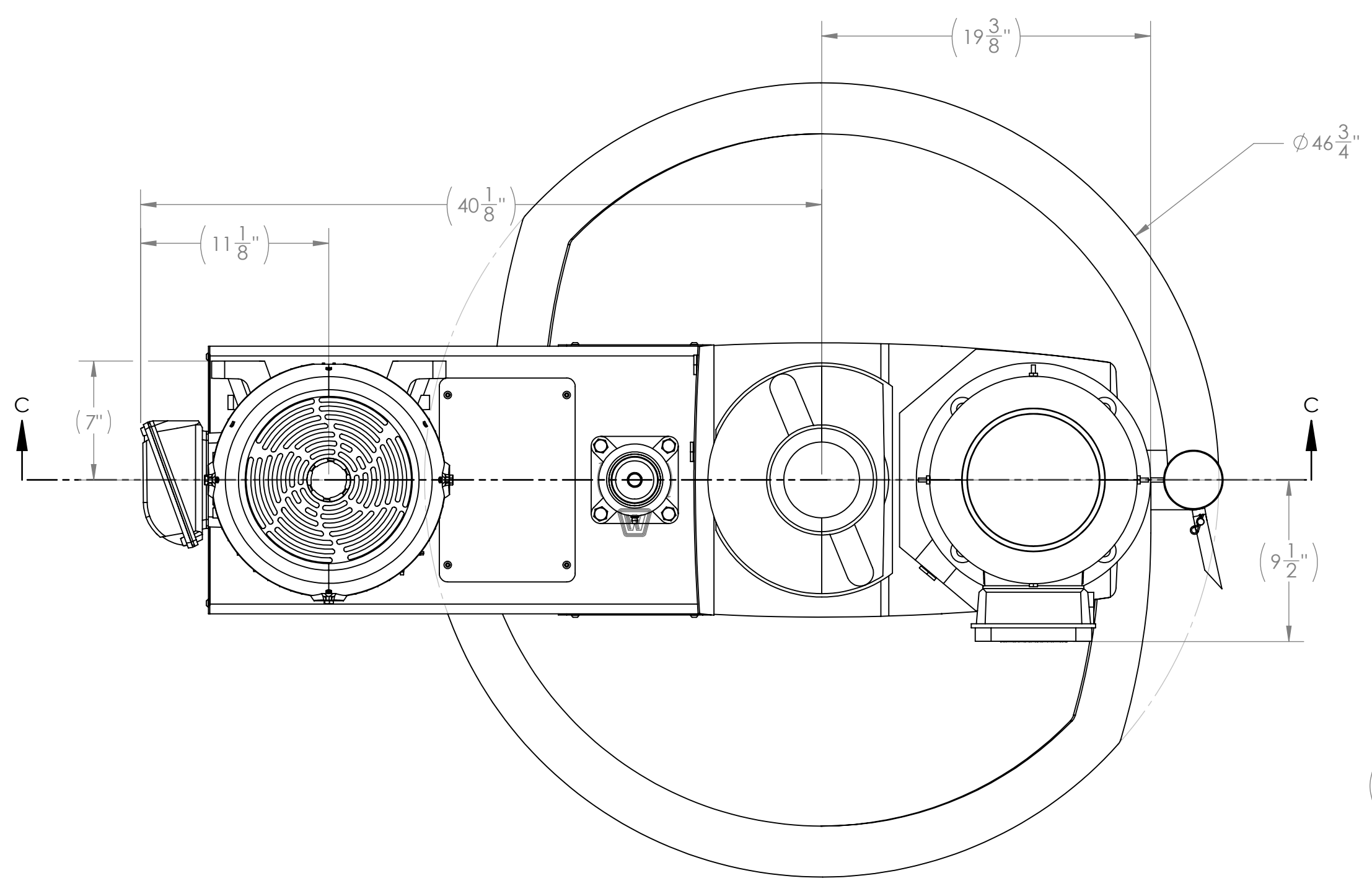
NOTES:
1. SEE SHEET #1.

UNLESS OTHERWISE SPECIFIED: DIMENSIONS ARE IN INCHES (mm)		NAME	DATE	PART NO.
TOLERANCES:		CLC	10/4/2022	TKS07306-002
MACHINING: X .5 X .1 X .05	FABRICATION: ALL ±.125	DRAWN BY	CUSTOMER	
XX ±.10 XXX ±.05	ANGLE, ALL ±1°	KSC	CLURLIX INC.	
PROPRIETARY AND CONFIDENTIAL THE INFORMATION CONTAINED HEREIN IS THE SOLE PROPERTY OF MXD PROCESS. ANY REPRODUCTION IN PART OR AS A WHOLE WITHOUT THE WRITTEN PERMISSION OF MXD PROCESS IS PROHIBITED.		APP. BY	DATE	MATERIAL
			10/6/2022	316 SS
				FINISH: #4 INT. / #4 EXT.
				SHEET SIZE: ARCH D (36" X 36") DO NOT SCALE DRAWING
		4650 NEW MIDDLE ROAD JEFFERSONVILLE, IN 47130 USA		TITLE: 300 GALLON SYSTEM, 3-PC SPLIT LID, CONE BOTTOM
		SALES@MXDPROCESS.COM PHONE: (812) 222-4047 FAX: (888) 811-4623		DWG. NO. S07306-002
				REV
		SCALE: 1:12 WEIGHT (LBS): 1131		SHEET 2 OF 4

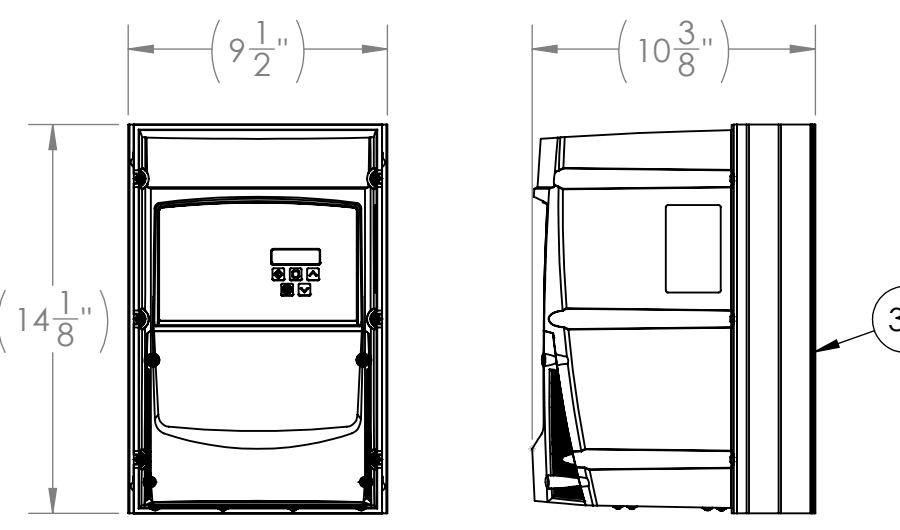
REVISIONS				
REV.	DESCRIPTION	DATE	REV. BY	APPROVED



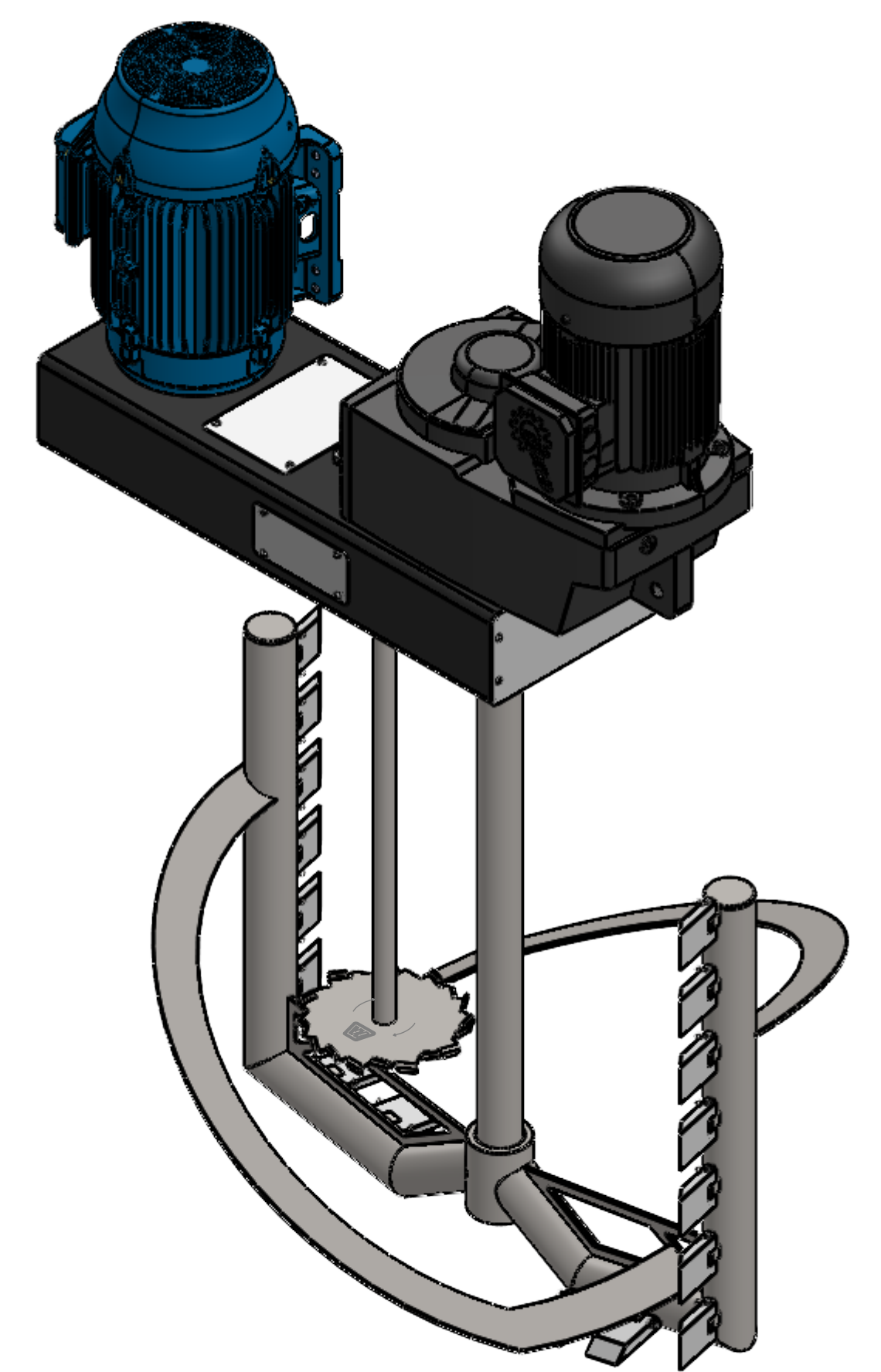
DETAIL D
SCALE 1:4



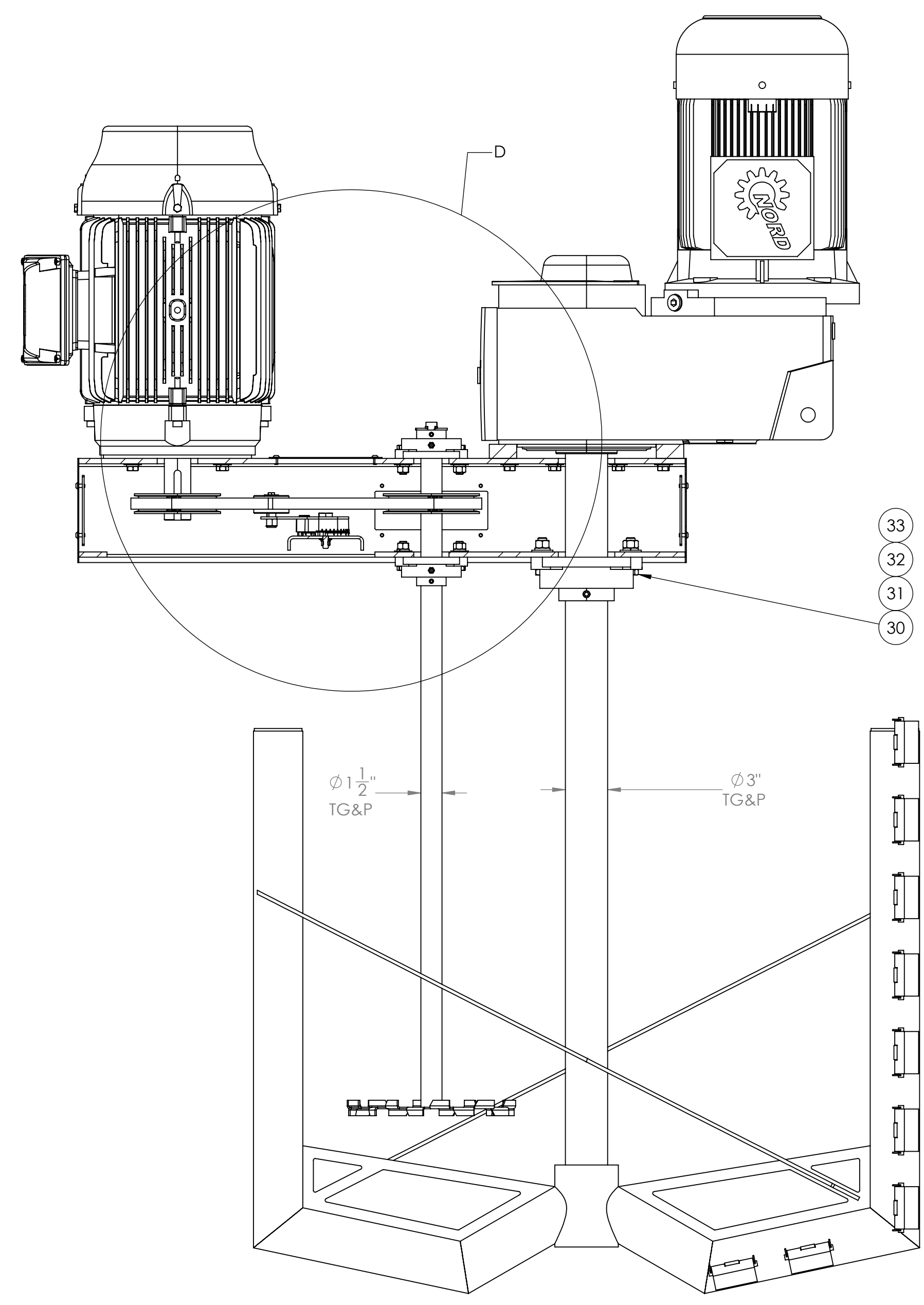
15 HP ANCHOR MIXER VFD - SHIPPED LOOSE



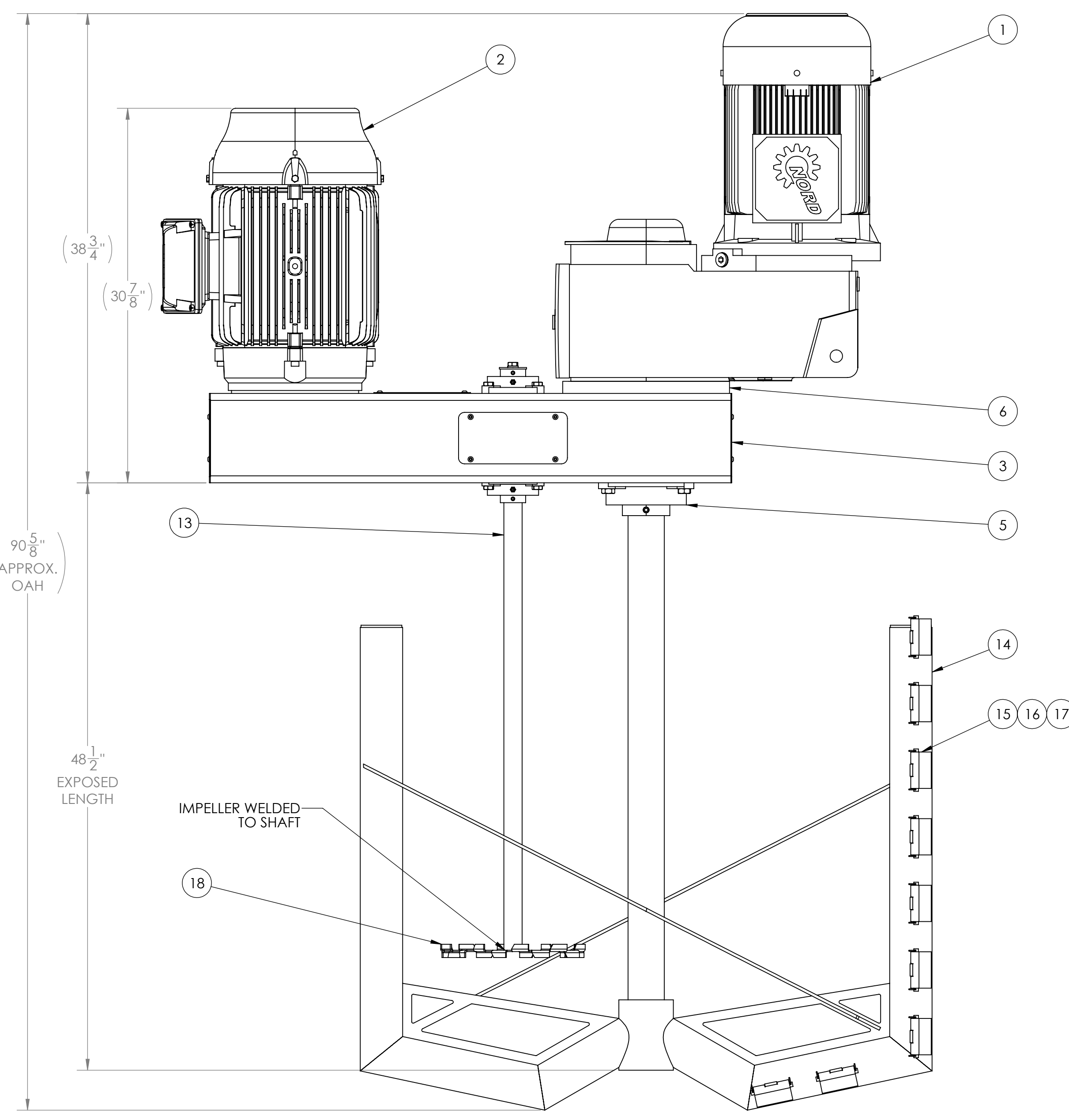
30 HP DISPENSER MIXER VFD - SHIPPED LOOSE



ISOMETRIC VIEW
SCALE 1:14



SECTION C-C



ITEM NO.	DESCRIPTION	MATERIAL	QTY.
1	15 HP GEARMOTOR, 15 HP TEFC MOTOR, 230-460V/3PH/60HZ, 5:1 TURNDOWN RATED, PREMIUM EFFICIENT INTEGRAL MOTOR DESIGN, 45.02:1 PREMIUM HELICAL GEARBOX, SK 7282 FRAME, 39 RPM OUTPUT AT 60HZ, 2.938" HOLLOW SHAFT, 350 B14MM FLANGE, HOLLOW SHAFT COVER, OIL SIGHT GLASS, SYNTHETIC LUBRICANT	SEVERE DUTY COATING, BLACK	1
2	30 HP TEFC MOTOR, INVERTER DUTY, 20:1 TURNDOWN RATING, PREMIUM EFFICIENT, 208-230/460V/3PH/60HZ, 4 POLE (1765RPM), IP55, CAST IRON, 284/6TC	CARBON STEEL	1
3	CUSTOM CROSSBEAM CASING - 15.75" 7" X 43" OAL - FOR 15" WIDE BRIDGE, 18" BELT CD	PAINTED CARBON STEEL	1
4	1.5" 4-HOLE FLANGE BEARING, SET SCREW LOCKING, UCF208-24	CARBON STEEL	2
5	3" 4-HOLE FLANGE BEARING, SET SCREW LOCKING, UCF215-48	CARBON STEEL	1
6	350 mm GEARBOX PILOT SPACER	304 SS	1
7	2012 TAPER-LOCK BUSHING - 1.5" BORE - KEYED	CAST IRON	1
8	2012 TAPER-LOCK BUSHING - 1.875" BORE - KEYED	CAST IRON	1
9	POLYCHAIN PULLEY - 14mm PITCH - 20mm BELT - 35 TOOTH - TAPER-LOCK 2012	CAST IRON	1
10	POLYCHAIN PULLEY - 14mm PITCH - 20mm BELT - 32 TOOTH - TAPER-LOCK 2012	CAST IRON	1
11	POLYCHAIN BELT - 14mm PITCH - 20mm WIDTH - 100 TOOTH - 1400mm LENGTH	PUR	1
12	FENNER RT3000 WITH 1.25" WIDE SMOOTH SHEAVE, 42LB MAX FORCE	VARIOUS	1
13	Ø1.5" TGP SHAFT - 48" OAL WITH WELDED DISPERSION BLADE	316 SS	1
14	MIXER ANCHOR - WELDED DESIGN WITH SCRAPERS AND HELICALS, FOR 50" OD 44" STRAIGHT SIDE VESSEL	316 SS	1
15	KETTLE SCRAPER - 3"X4.5"X0.75"	NYLON CAST TYPE 6	17
16	QD SCRAPER HINGE PIN, 3/8" X 3" USABLE	316L SS	17
17	HAIR PIN - 5/64"Ø, 1.3" LONG	316 SS	34
18	12" DISPERSION BLADE - .375" BORE - WELDED TO SHAFT	316 SS	1
19	IMPELLER SAFETY PLATE	316 SS	1
20	3/8"-16 X 2.5" FLAT HEAD SOCKET BOLT	STAINLESS STEEL	1
21	3/8" FLAT WASHER	STAINLESS STEEL	1
22	3/8" SPLIT LOCK WASHER	STAINLESS STEEL	1
23	3/8"-16 HEX NUT	STAINLESS STEEL	1
24	1/2"-13 X 1" HEX BOLT	STAINLESS STEEL	1
25	1/2"-13 X 1.75" HEX BOLT	STAINLESS STEEL	12
26	1/2"-13 X 2.5" HEX BOLT	STAINLESS STEEL	8
27	1/2" FLAT WASHER	STAINLESS STEEL	20
28	1/2" SPLIT LOCK WASHER	STAINLESS STEEL	21
29	1/2"-13 HEX NUT	STAINLESS STEEL	8
30	5/8"-11 X 2.25" HEX BOLT	STAINLESS STEEL	4
31	5/8" FLAT WASHER	STAINLESS STEEL	4
32	5/8" SPLIT LOCK WASHER	STAINLESS STEEL	4
33	5/8"-11 HEX NUT	STAINLESS STEEL	4
34	15 HP SPEED CONTROLLER - DIGITAL RPM READOUT - 380-460V/3PH - PROGRAMMED FOR 39 RPM - IP66 - SHIPPED LOOSE	NEMA 4X	1
35	30 HP SPEED CONTROLLER - DIGITAL RPM READOUT - 380-460V/3PH - PROGRAMMED FOR 135-1600 RPM - IP66 - SHIPPED LOOSE	NEMA 4X	1

UNLESS OTHERWISE SPECIFIED: DIMENSIONS ARE IN INCHES (mm)

TOLERANCES: MACHINING: ALL ±.125; FABRICATION: ALL ±.125; APP. BY: KSC; DATE: 10/16/2022; NAME: MAX507306-002; PART NO. MAX507306-002; DRAWN BY: CLC; DATE: 10/4/2022; CUSTOMER: CURLIUMX INC.; PROPRIETARY AND CONFIDENTIAL: THE INFORMATION CONTAINED IN THIS DRAWING IS THE SOLE PROPERTY OF MAX PROCESS. ANY REPRODUCTION IN PART OR AS A WHOLE WITHOUT THE WRITTEN PERMISSION OF MAX PROCESS IS PROHIBITED.

4650 NEW MIDDLE ROAD
JEFFERSONVILLE, IN 47130 USA
SALES@MAXPROCESS.COM
PHONE: (812) 202-4847
FAX: (888) 811-4623

TITLE: CUSTOM TOP ENTRY MIXER - 15 HP ANCHOR MIXER - 30 HP DISPENSER MIXER AND DRIVE SYSTEM

DWG. NO. S07306-002

SCALE: 1:7 WEIGHT (LBS): 1818 SHEET 3 OF 4

NOTES:
1. SEE SHEET #1.