

APPROVED AS DRAWN; RELEASE FOR CONSTRUCTION

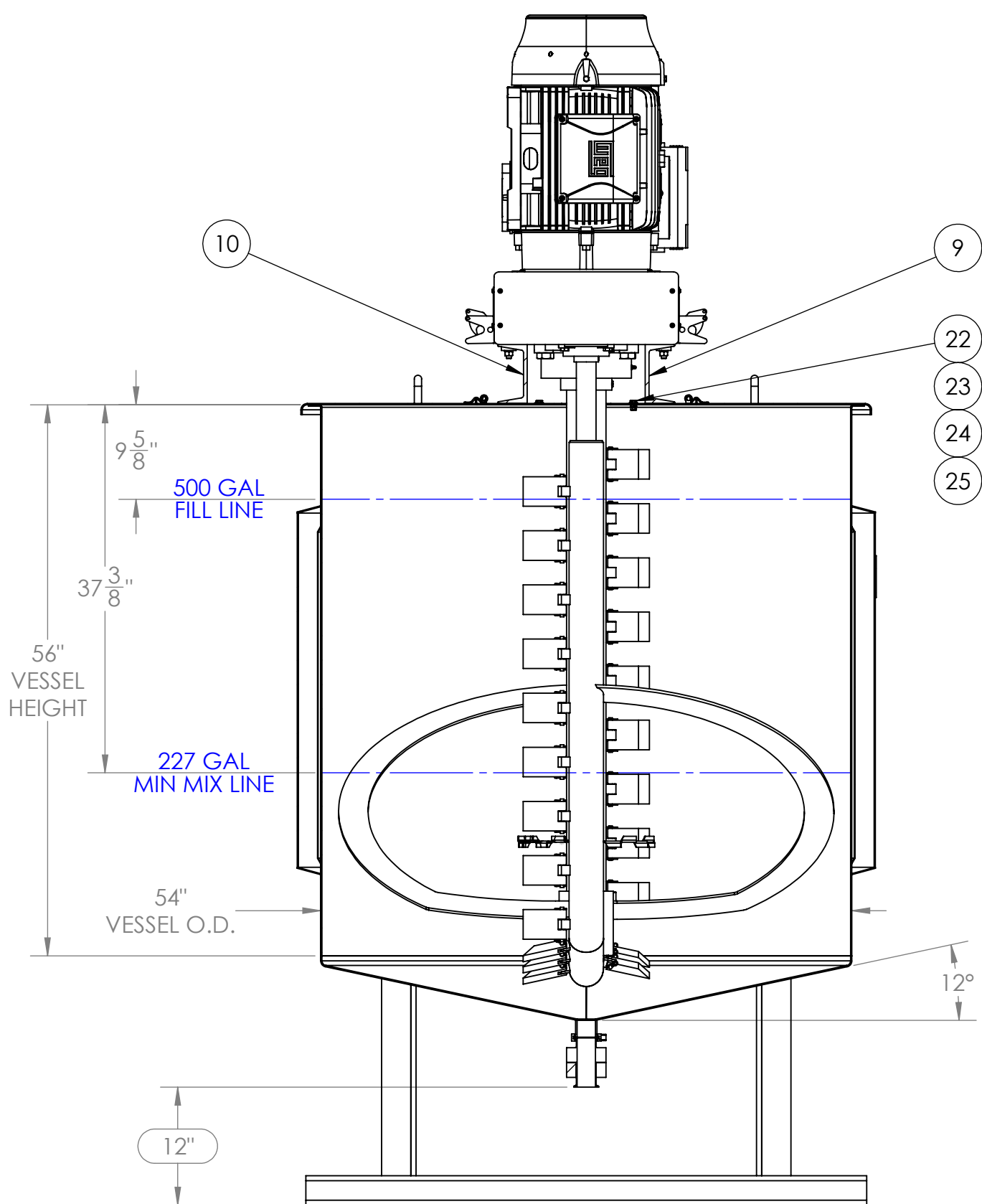
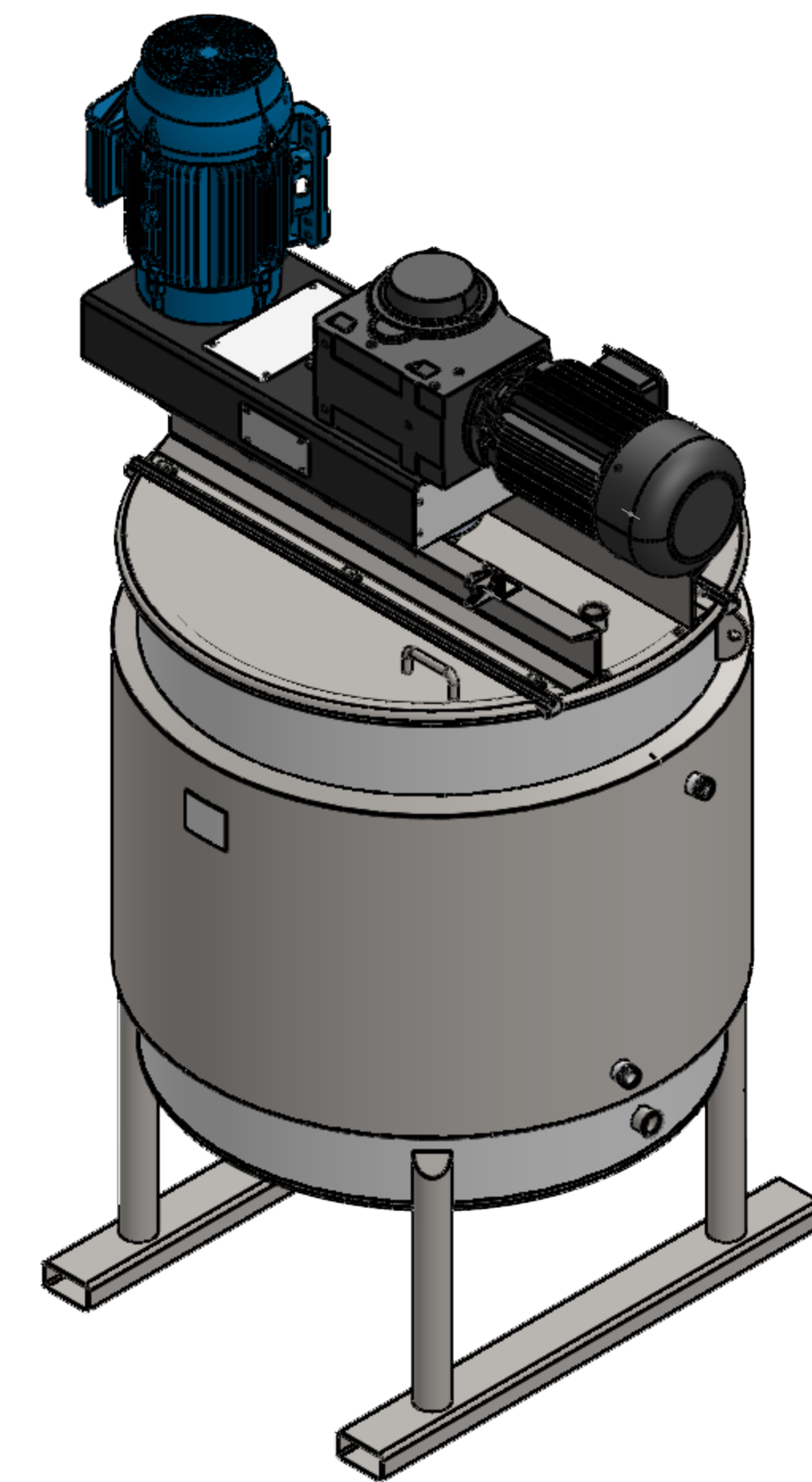
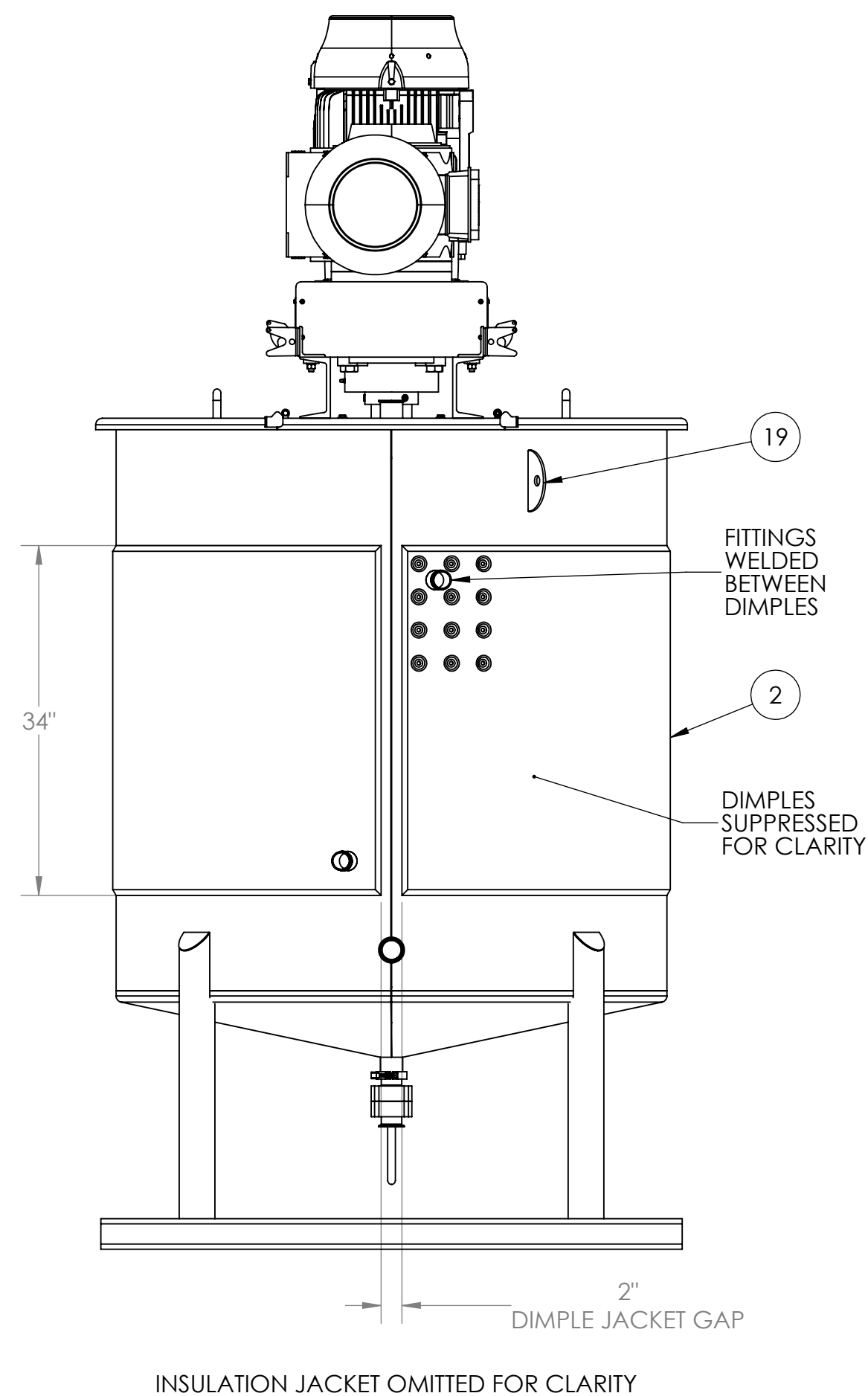
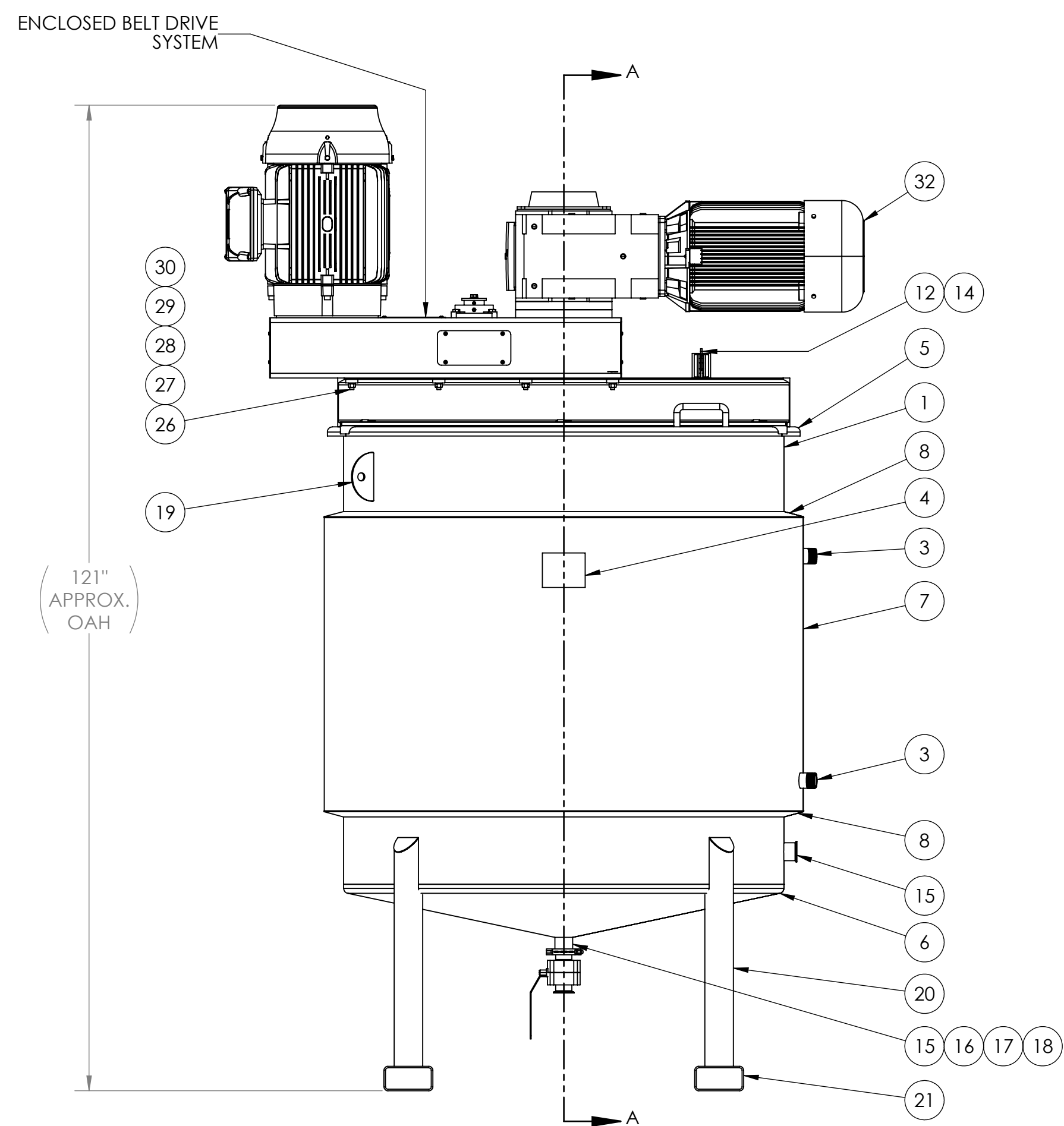
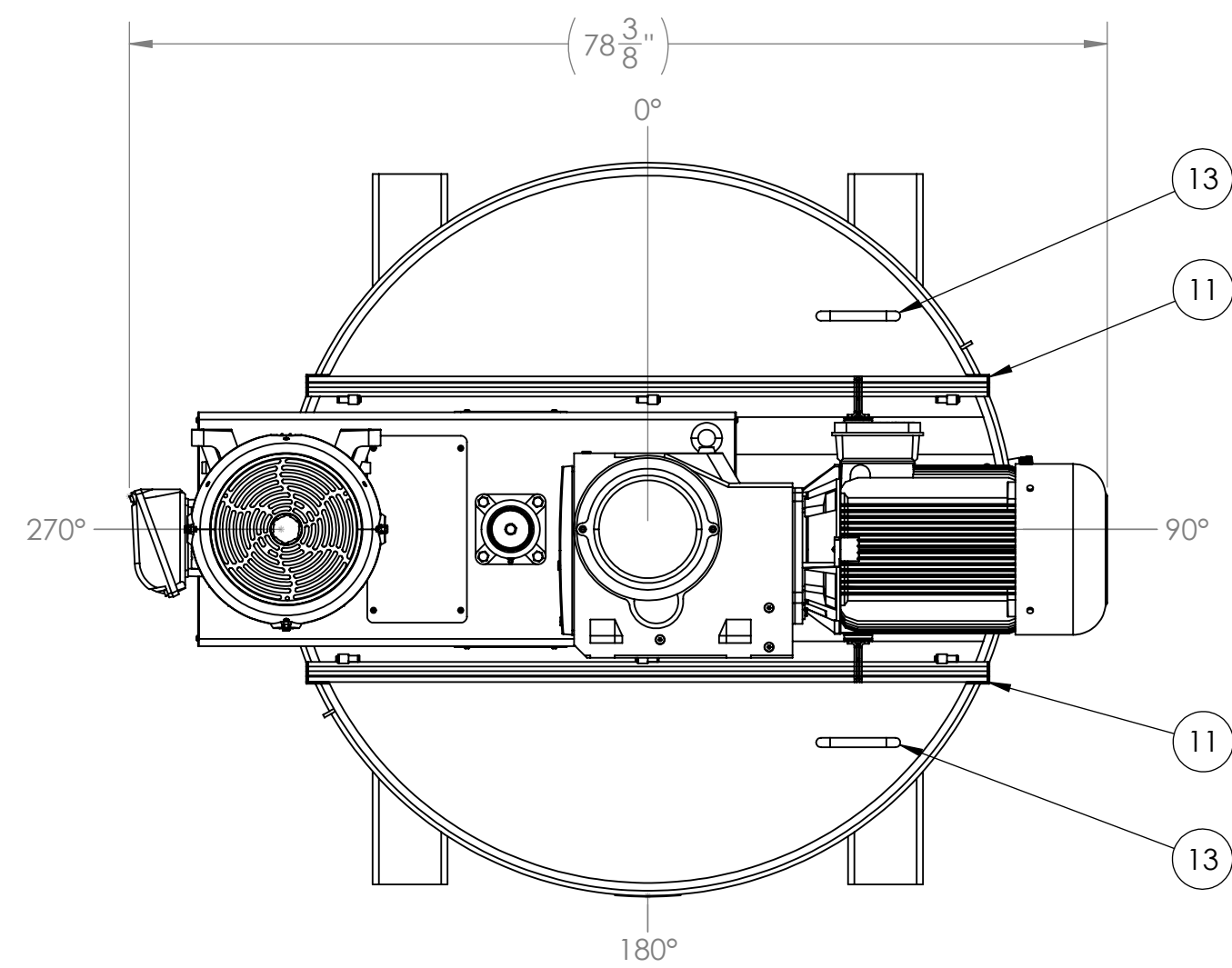
REJECTED; REVISE AND RESUBMIT

SIGNATURE: DATE: *NOTE THAT PRICE MAY BE AFFECTED BY THE CHANGES

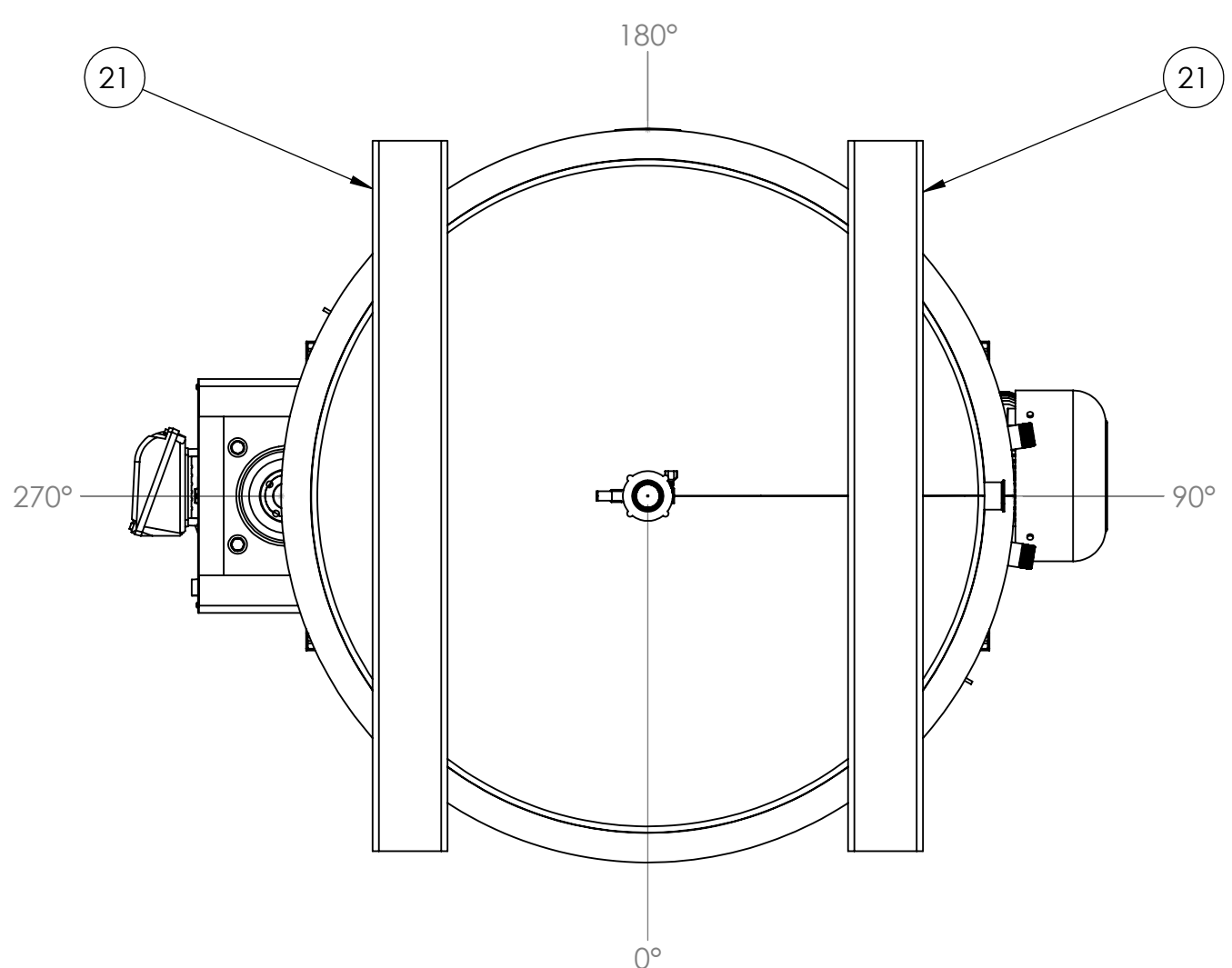
MAXIMUM FASTENER TORQUE			
NOM. SIZE	ASTM F593	SAE J429 GR. 5	ZINC COATED
#10	20	31	
#12	29	49	
1/4	62	76	
5/16	125	156	
3/8	19	23	
7/16	30	36	
1/2	46	57	
5/8	92	113	
3/4	113	200	
7/8	182	322	
1	273	483	

VALUES LISTED ARE FOR COARSE THREAD LUBRICATED FASTENERS, 5/16" AND LARGER IN INCH LBS, 3/8" AND LARGER IN FOOT LBS

NB	266
NATIONAL BOARD NO.	
CERTIFIED BY:	
MXD PROCESS	
JEFFERSONVILLE, IN USA	
UM	MDMT -20 F AT 90 PSI
	VESSEL MAWP N/A PSI AT N/A F
	JACKET MAWP 80 PSI AT 350 F
	YEAR 2022 S/N S07306-001
	VESSEL VOLUME 500 GALLONS
	WETTED MATERIAL 316 SS



SECTION A-A



NOTES:

- INTERIOR FINISH REQUIREMENTS:
 - #4 FINISH WITH ALL SURFACES GROUND SMOOTH, POLISHED, AND BUFFED. ALL SEAMS FULLY WELDED.
- EXTERIOR FINISH REQUIREMENTS:
 - #4 FINISH WITH ALL SURFACES GROUND SMOOTH, POLISHED, AND BUFFED. ALL SEAMS FULLY WELDED.
- VESSEL TO BE WELDED FOLLOWING THE LATEST REVISION OF WPS-0001 (GMWP-P) AND/OR WPS-0002 (GTAW).
- TAPER OR UNEQUAL THICKNESSES PER FIGURE UW-9-1 KEEPING INSIDE WALL OF VESSEL FLUSH.
- ALL NOZZLES TO BE WELDED AT FULL HEIGHT EXTENSION UNLESS OTHERWISE NOTED.
- NOZZLES ARE NOT DESIGNED FOR EXTERNAL LOADINGS OF ANY KIND UNLESS OTHERWISE NOTED.
- EXPOSED CARBON STEEL TO BE PAINTED BLACK WITH URETHANE TOP COAT.
- ELECTRICAL DISCONNECT AND OVERCURRENT PROTECTION PROVIDED BY OTHERS.
- SEE RECOMMENDED BATCH SIZES LISTED. RUNNING MIXER WITH IMPELLERS SPLASHING OR LIQUID LEVEL TOO CLOSE ABOVE AN IMPELLER CAN CAUSE DAMAGE TO MIXER.
- TANK IS NOT RATED FOR PRESSURE.
- FAILURE TO ADEQUATELY VENT THE VESSEL WHILE FILLING OR EMPTYING MAY CREATE PRESSURE OR VACUUM WHICH COULD RESULT IN DAMAGE TO THE VESSEL.
- DIMPLE JACKET ONLY IS ASME CODE STAMPED.
- ASME PRESSURE RELIEF VALVE IN LINE BY OTHERS.
- LIFTING LUGS ARE DESIGNED FOR USE ONLY WHEN TANK IS EMPTY.
- S/N: [SALES ORDER NUMBER]-[XXX]
 - WHERE [XXX] = 001 FOR THE FIRST VESSEL ON THE SALES ORDER, 002 FOR THE SECOND VESSEL, ETC.
 - APPEND -A, -B, -C, ETC WHEN QUANTITY IS GREATER THAN 1
 - EXAMPLE: S00123-001-A
- FOR ADDITIONAL INFORMATION, REFERENCE MXD SALES ORDER S07306 / CURLMIX INC.

ITEM NO.	DESCRIPTION	MATERIAL	QTY.
1	FLANGED SHELL - 54" OD X 56" SS HEIGHT, 10 GAGE, 1.25" FLANGE, 57.5" PRE-FLANGE SS, 15" COIL LENGTH	SA240-316L, HEAT CODE ID W/ MTRS	1
2	SHELL DIMPLE JACKET - 54" ID X 34" TALL, 3.25" SPACING, 1/2" WELD HOLE, 1/4" PILLLOW HT, 14 GAGE, STYLE 3, APPROX. 39.5 SQUARE FEET NEEDED	SA240-304, HEAT CODE ID W/ MTRS	1
3	PIPE NIPPLE - 1.5" S40 MNPT X 4" LONG, THREADED ONE END	SA312-316 SMLS, HEAT CODE ID W/ MTRS	2
4	MXD PROCESS ASME NAMEPLATE - 5.25" X 4.25" X .105"	SA240-316L, HEAT CODE ID W/ MTRS	1
5	STANDARD FLAT HEAD - 58" OD, .63" KR, .5" SF, 10 GAGE, 59" ODF X 75" CH, 28.875" RI	316 SS	1
6	FLANGED CONE - 54" OD X 12" ANGLE, .625" KR, .5" SF, 10 GAGE, 56.25" ODF X .75" CH, 27.625" RI	316 SS	1
7	INSULATION SHELL - 58.75" OD X 36" SS HEIGHT, 12 GAGE, 16 FT COIL LENGTH	316 SS	1
8	INSULATION JACKET ANGLED CLOSURE RING, 58.75" OD X 54" ID, 15" ANGLE, 12GA	316 SS	2
9	CHANNEL - C6 X 16.3# - 6" X 3" X 3/8" THICK - 60" OAL - TRIMMED TO FIT	STAINLESS STEEL	1
10	CHANNEL - C6 X 16.3# - 6" X 3" X 3/8" THICK - 60" OAL - TRIMMED TO FIT	STAINLESS STEEL	1
11	SANITARY HINGE ASSEMBLY, 3-HINGE, CUT TO LENGTH	316 SS WETTED	2
12	CUSTOM LATCH HOOK, FOR Ø.75" ROD, WELD-ON TYPE	316 SS	2
13	Ø.75" LATCH ROD	316 SS	2
14	ANGLE IRON - 3" X 2" X .25" THICK - 2.25" OAL	316 SS	2
15	TRICLAMP - 2" FERRULE X 1.75" LONG, HEAVY WALL, .165" THK, 2.19" OD	316 SS	3
16	TRICLAMP - 2" GASKET	PTFE	1
17	TRICLAMP - 2" WING NUT CLAMP	316 SS	1
18	TRICLAMP - 2" BALL VALVE	316 SS	1
19	LIFTING LUG - D STYLE 6" WIDE X 3" TALL X .25" THICK, 1" CH	316 SS	2
20	PIPE LEG - 3" S40S, 40" LONG	316 SS	4
21	FORK TRUCK POCKET - 6" X 3" X 7G RECTANGULAR TUBING, 57.00" OAL	316 SS	2
22	3/8"-16 X 1" HEX BOLT	STAINLESS STEEL	4
23	3/8" FLAT WASHER	STAINLESS STEEL	4
24	3/8" SPLIT LOCK WASHER	STAINLESS STEEL	4
25	3/8"-16 HEX NUT	STAINLESS STEEL	4
26	1/2"-13 X 2.25" HEX BOLT	STAINLESS STEEL	8
27	1/2" FLAT WASHER	STAINLESS STEEL	8
28	1/2" BEVEL WASHER	STAINLESS STEEL	8
29	1/2" SPLIT LOCK WASHER	STAINLESS STEEL	8
30	1/2"-13 HEX NUT	STAINLESS STEEL	8
31	INSULATION - 2" THICK (NOT SHOWN), APPROX 55.9 SQUARE FEET NEEDED	MINERAL FIBER	1
32	CUSTOM TOP ENTRY MIXER - 25HP ANCHOR MIXER - 50 HP DISPERSER MIXER AND DRIVE SYSTEM	-	1

UNLESS OTHERWISE SPECIFIED: DIMENSIONS ARE IN INCHES (mm)	NAME	DATE	PART NO.
TOLERANCES:	CLC	9/28/2022	SYS6A4C00500-23973
MACHINING: X ± .3	APP. BY	KSC	10/3/2022
X ± .1	FABRICATION:		
XX ± .05	ALL ± .125		
X .XX ± .05	ANGLE, ALL ± .1"		

MXD PROCESS

4650 NEW MIDDLE ROAD
JEFFERSONVILLE, IN 47130 USA
SALES@MXDPROCESS.COM
PHONE: (812) 222-4847
FAX: (888) 811-4823

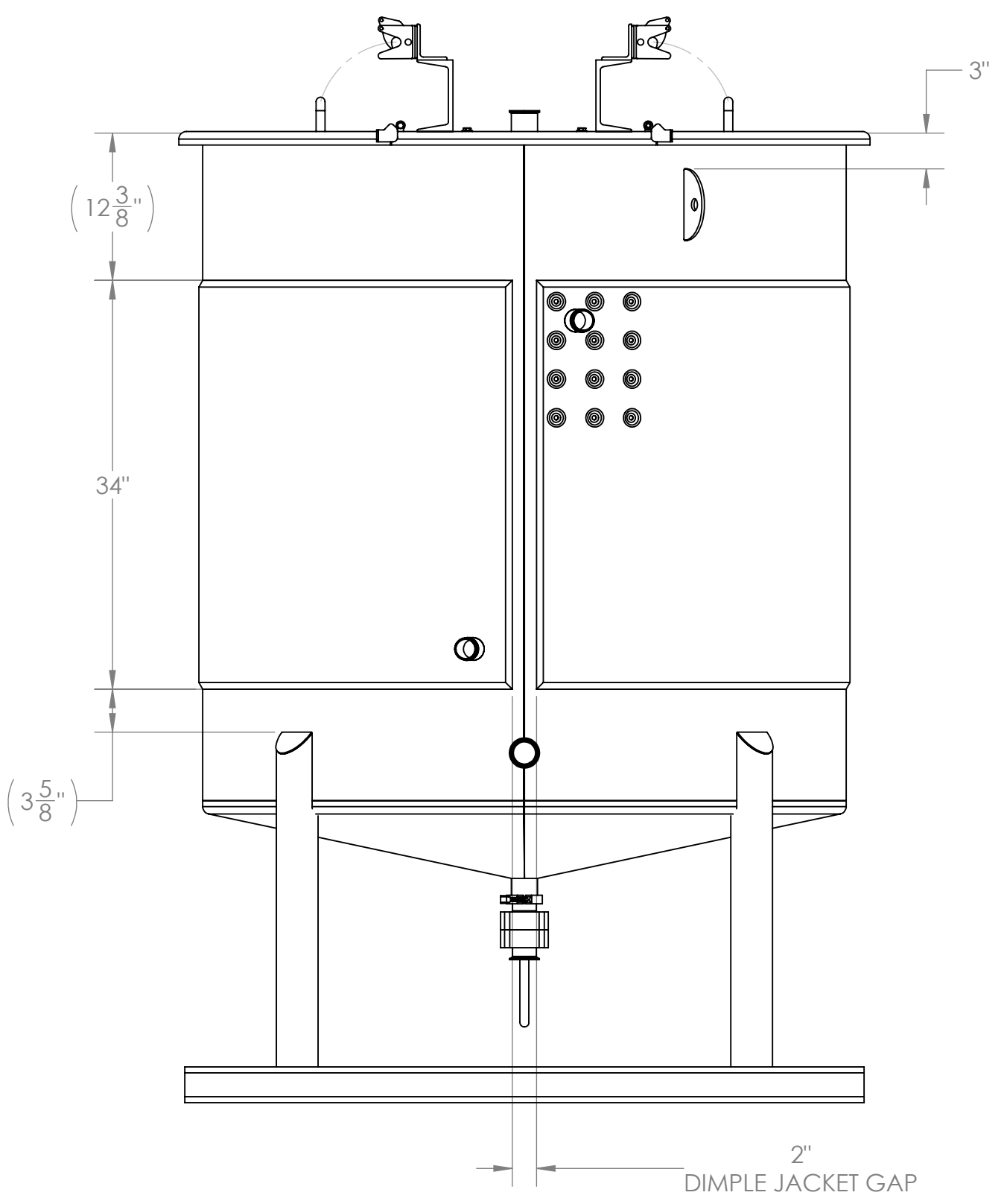
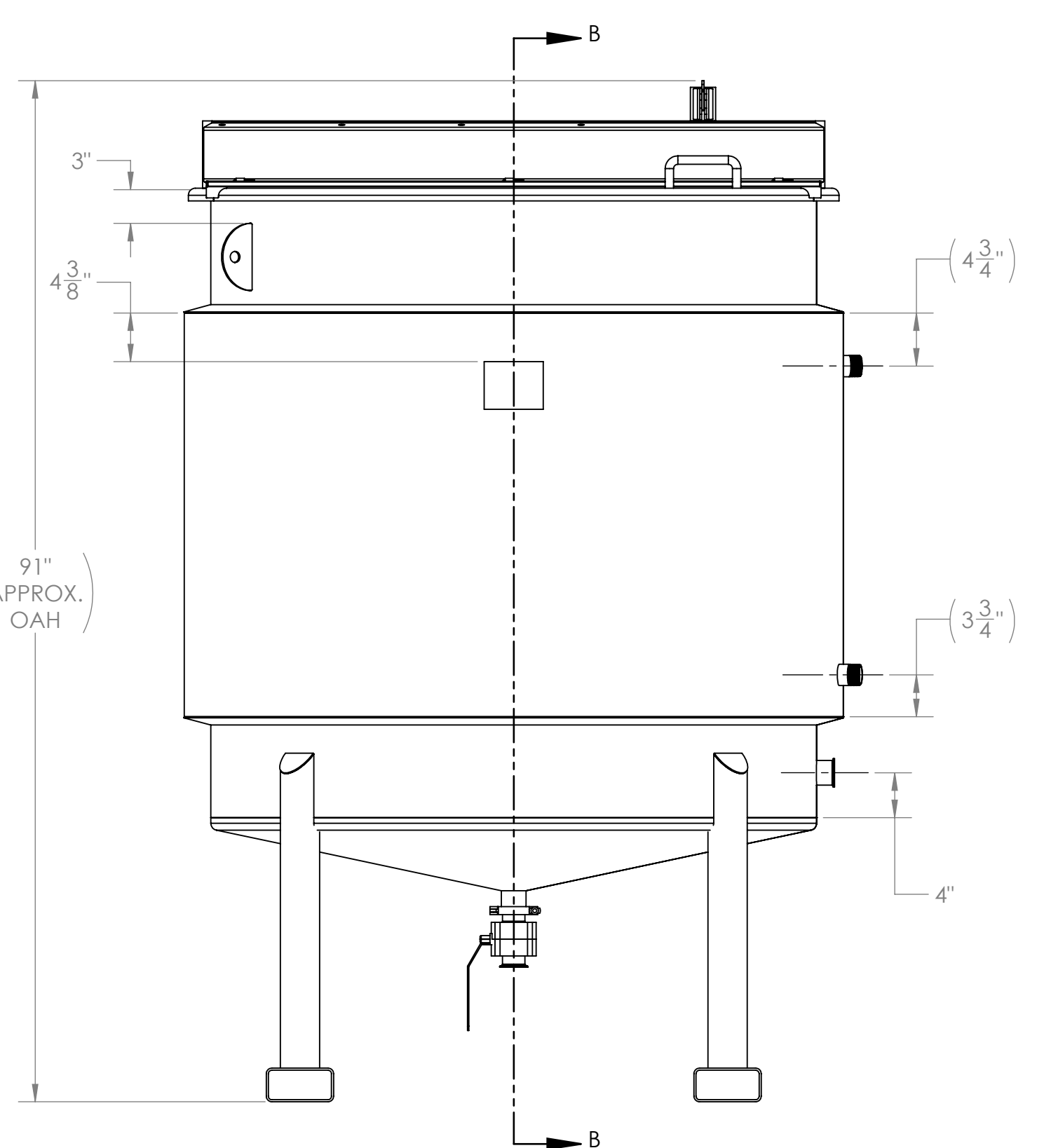
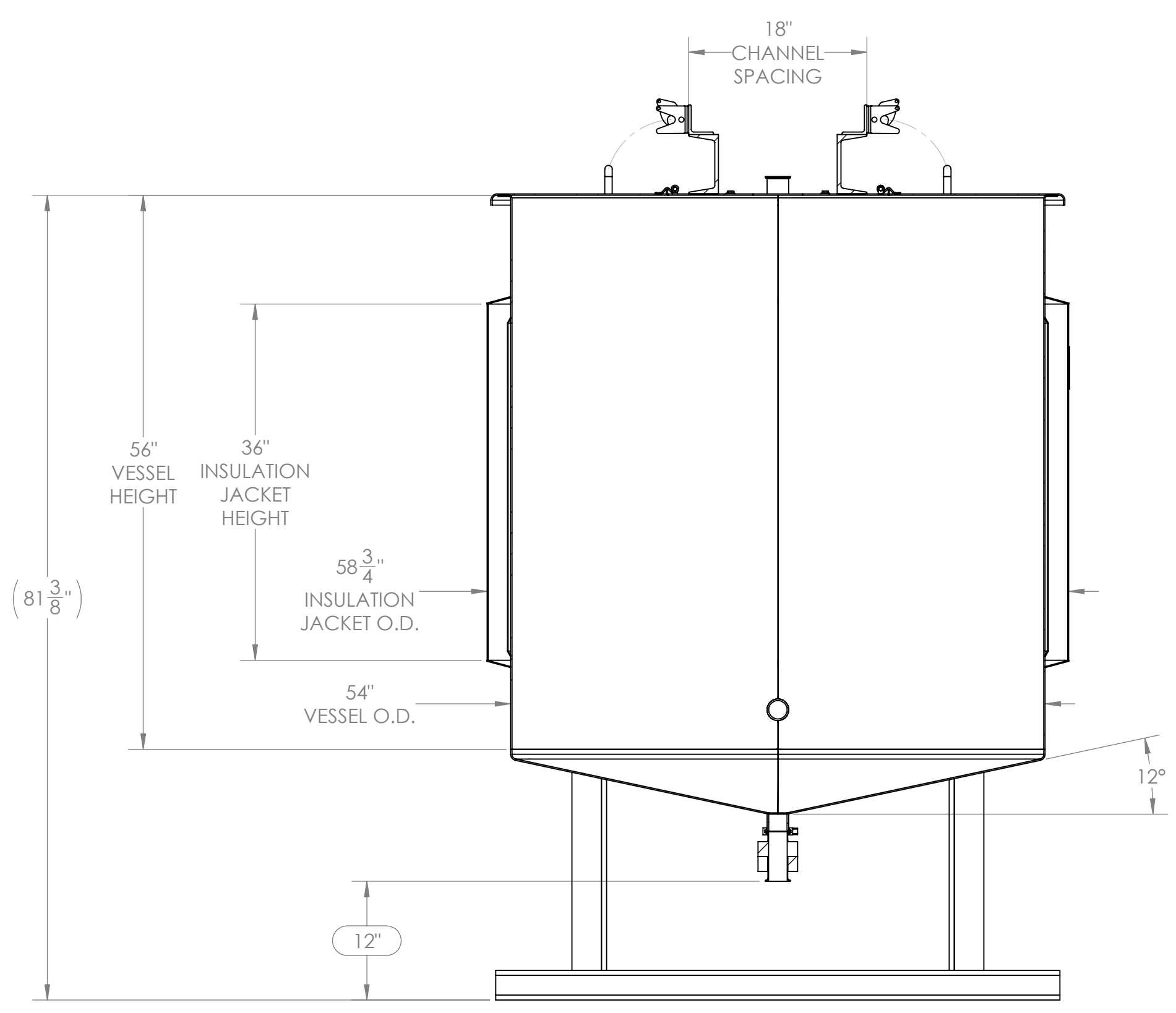
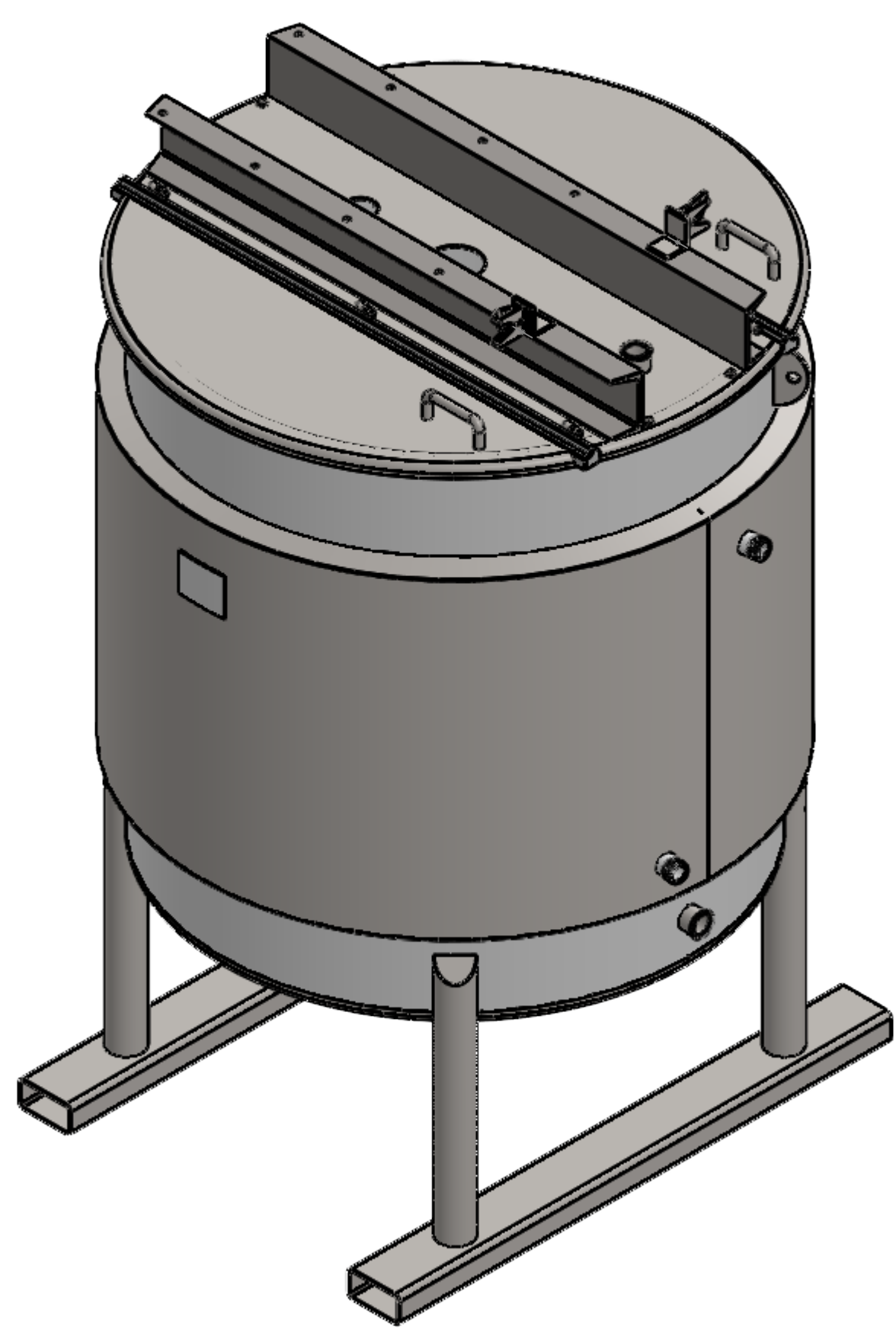
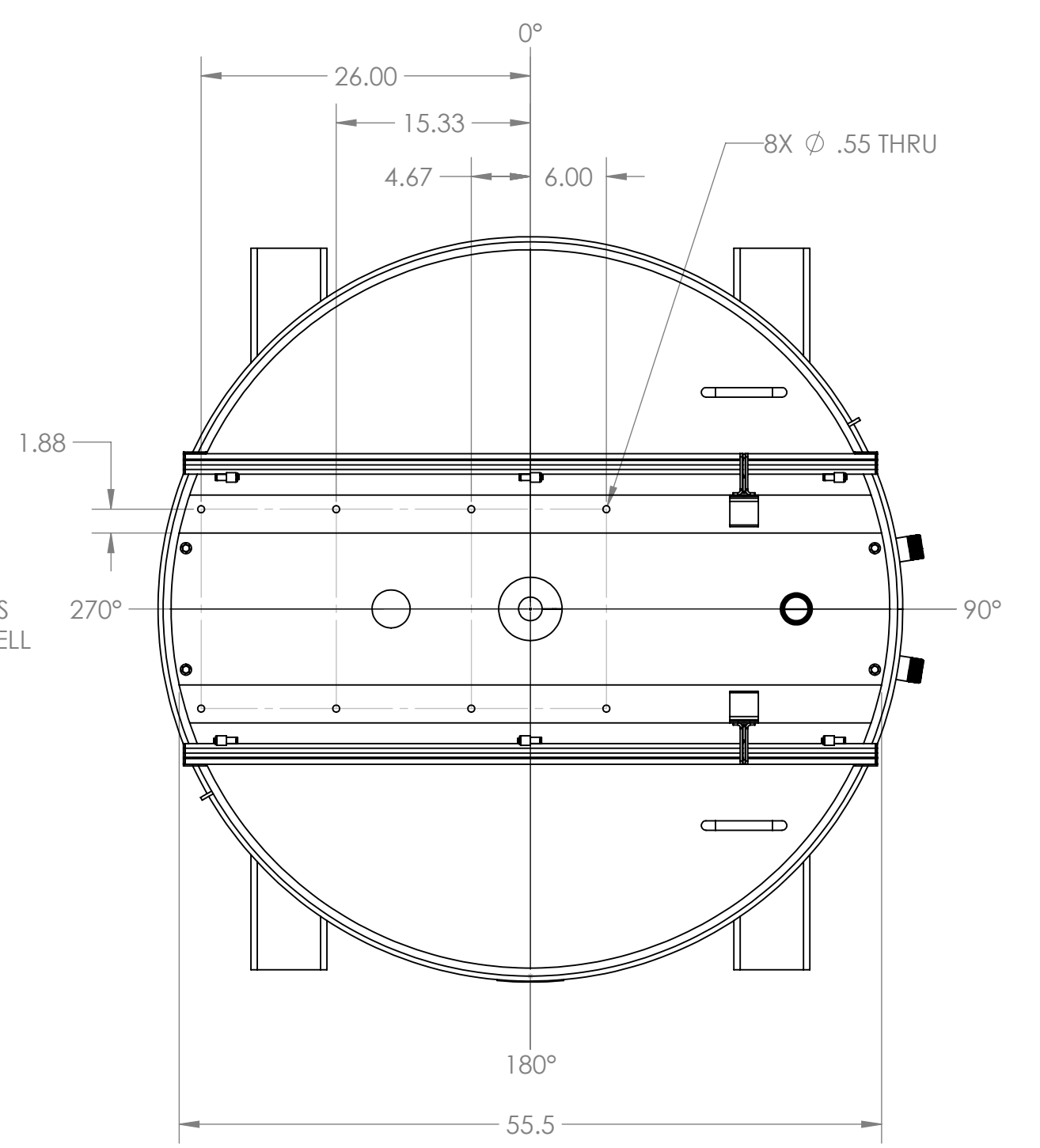
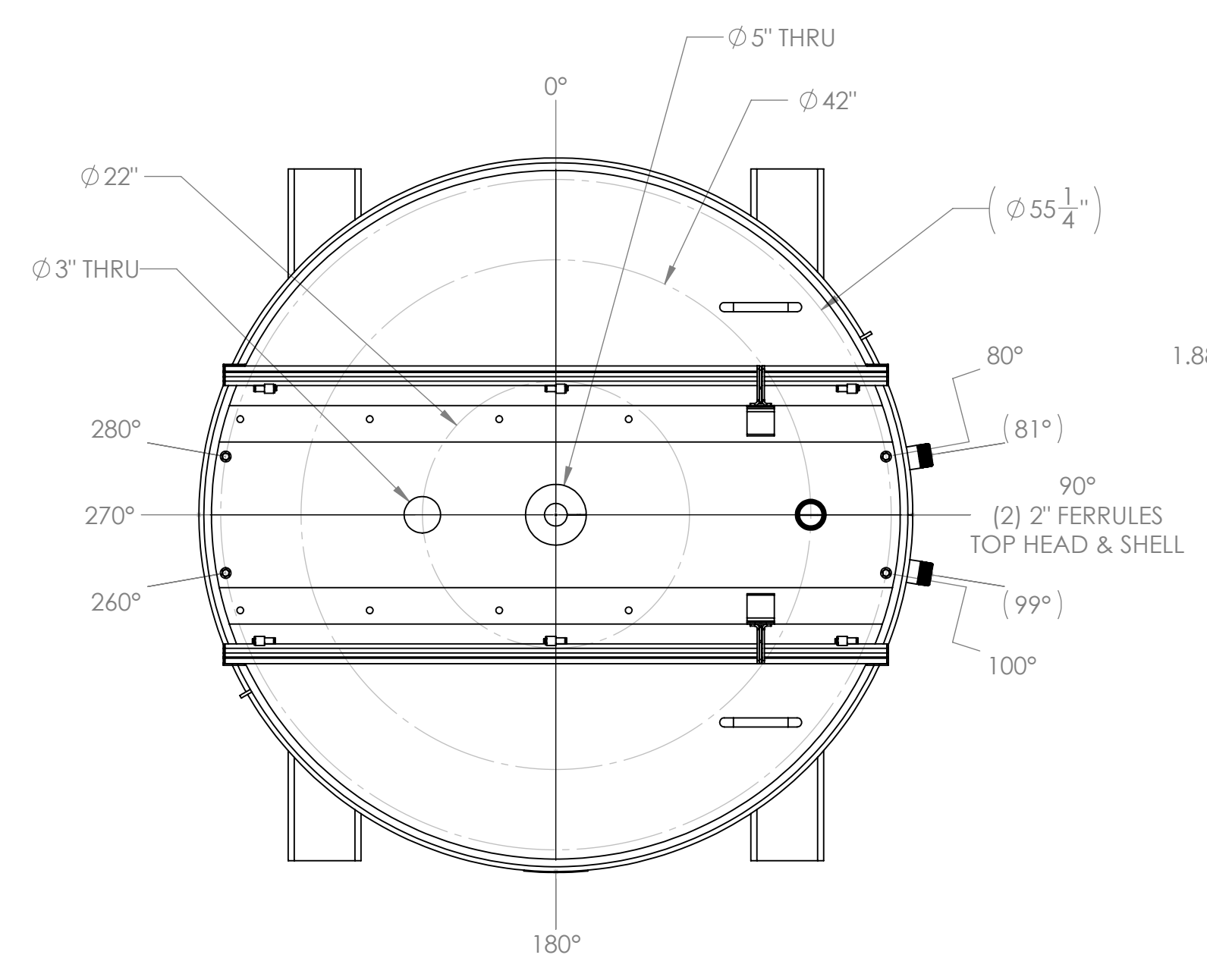
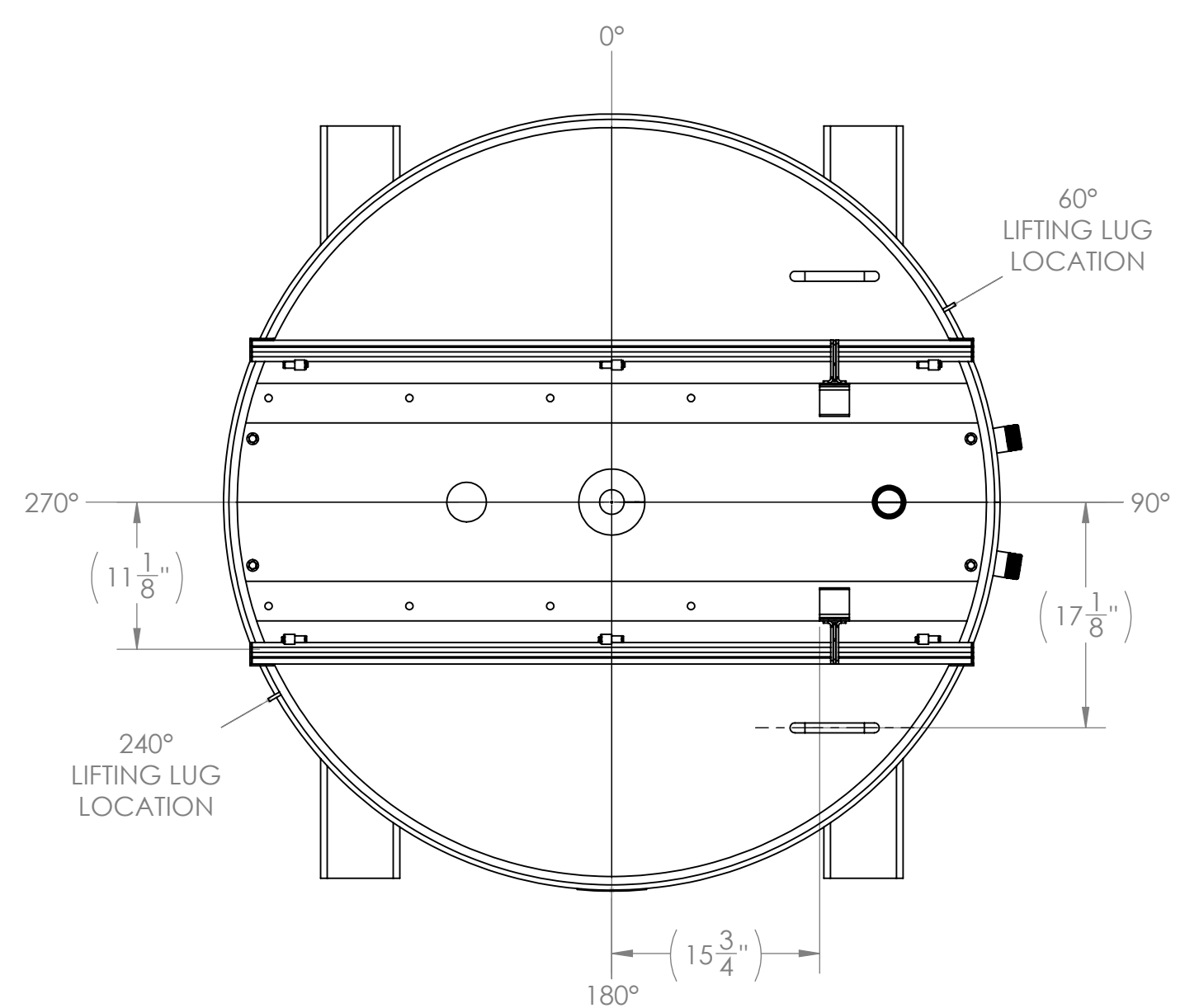
TITLE:
500 GALLON SYSTEM, CONE BOTTOM, 25 HP ANCHOR, 50 HP DISPERSER

DWG. NO. S07306-001

SCALE: 1:14 WEIGHT (LBS): 3378

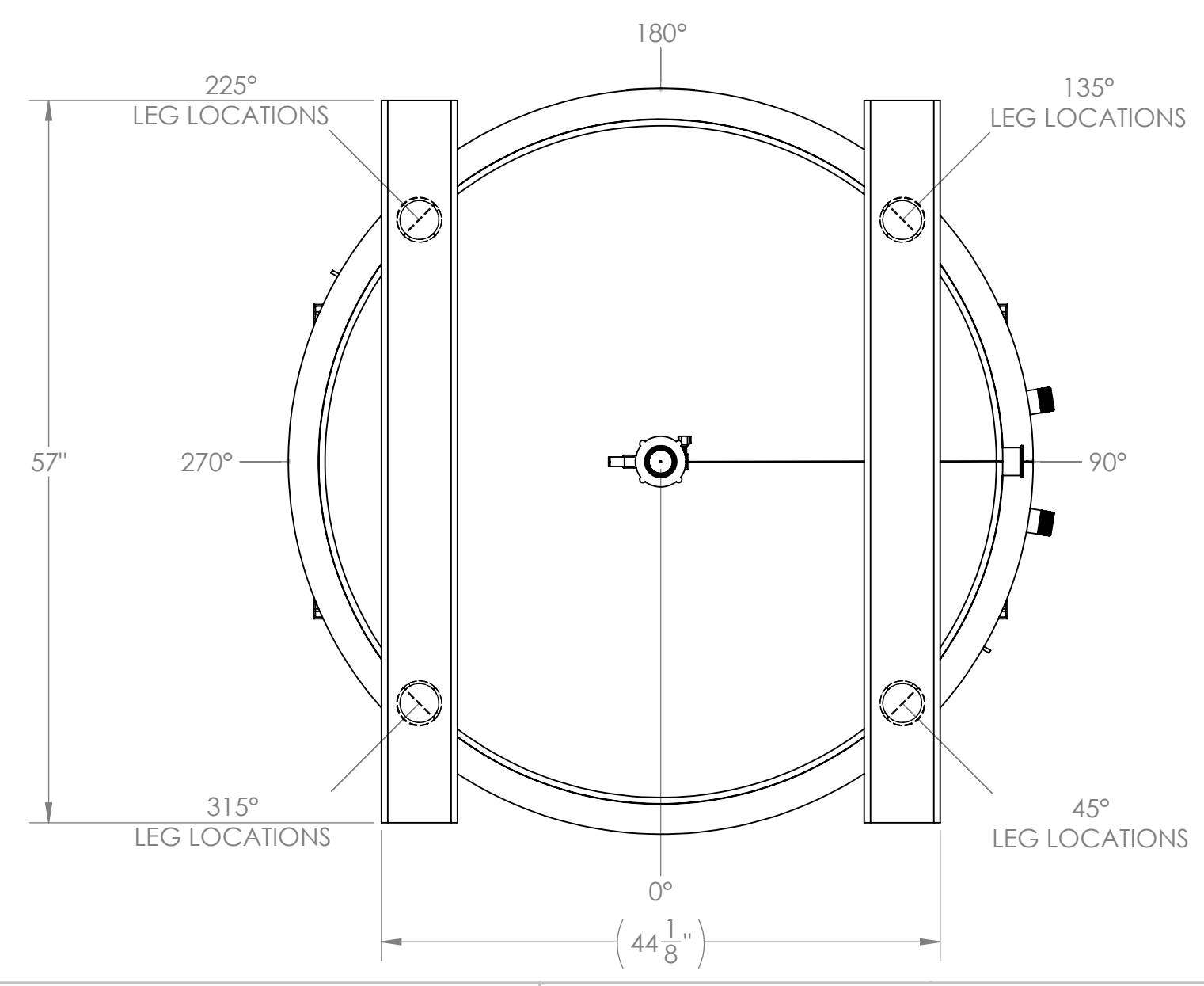
REV SHEET 1 OF 4

REVISIONS				
REV.	DESCRIPTION	DATE	REV. BY	APPROVED



SECTION B-B

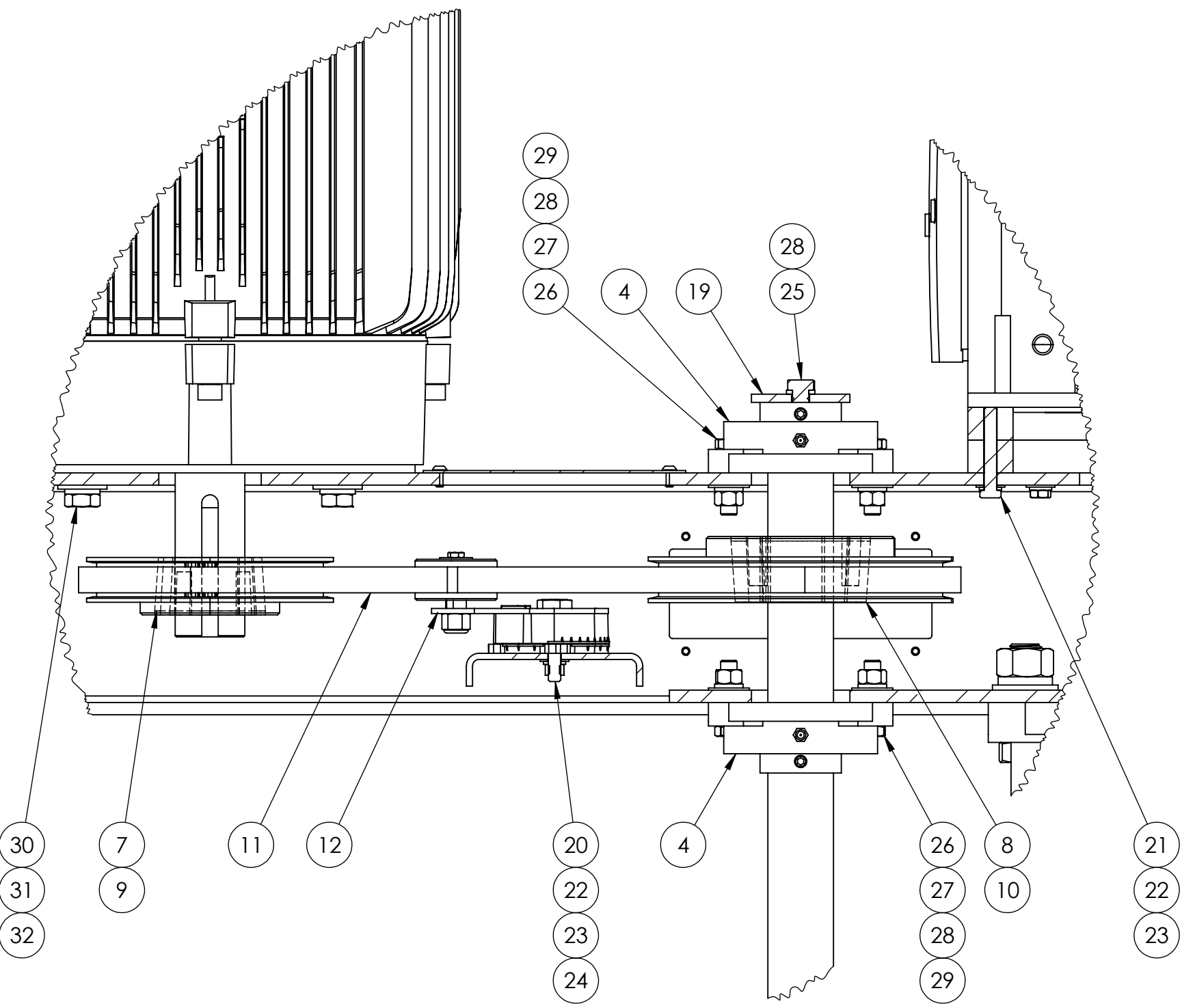
INSULATION JACKET OMITTED FOR CLARITY



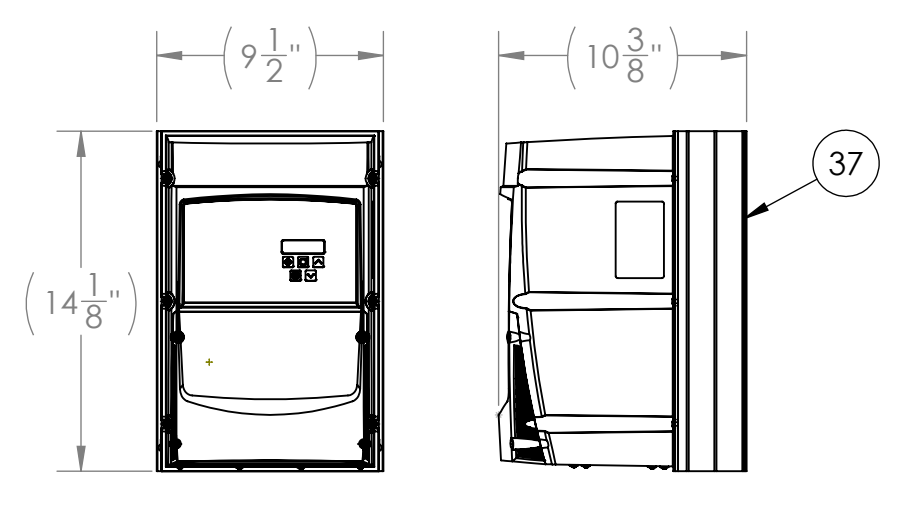
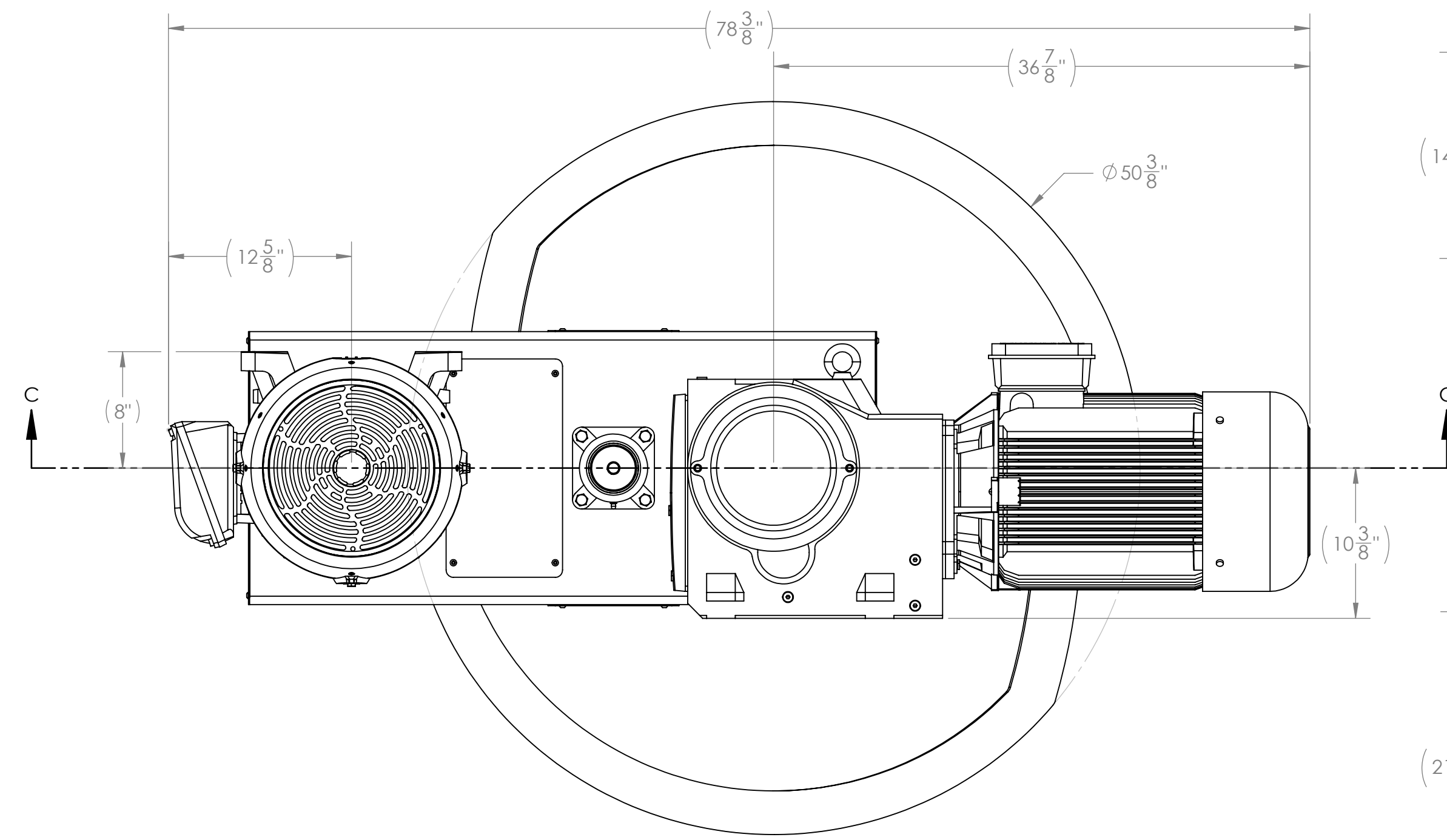
NOTES:
1. SEE SHEET #1.

UNLESS OTHERWISE SPECIFIED: DIMENSIONS ARE IN INCHES (mm)		NAME	DATE	PART NO.
TOLERANCES:		CLC	9/28/2022	TKS07306-001
MACHINING:	FABRICATION:	APP. BY	KSC	10/3/2022
X ± .3	ALL ± .125			
X ± .1				
X ± .05				
ANGLE:	ALL ± 1°	PROPERTY AND CONFIDENTIAL: THE INFORMATION CONTAINED IN THIS DRAWING IS THE SOLE PROPERTY OF MAXD PROCESS. ANY REPRODUCTION IN PART OR AS A WHOLE WITHOUT THE WRITTEN PERMISSION OF MAXD PROCESS IS PROHIBITED.		
		MATERIAL: 316 SS		
		FINISH: #4 INT. / #4 EXT.		
		SHEET SIZE: ARCH D (36" X 36") DO NOT SCALE DRAWING		
		4650 NEW MIDDLE ROAD JEFFERSONVILLE, IN 47130 USA SALES@MAXDPROCESS.COM PHONE: (812) 222-4047 FAX: (888) 811-4623		TITLE: 500 GALLON SYSTEM, 3-PC SPLIT LID, CONE BOTTOM
DWG. NO.		S07306-001		REV
SCALE: 1:12		WEIGHT (LBS): 1269		SHEET 2 OF 4

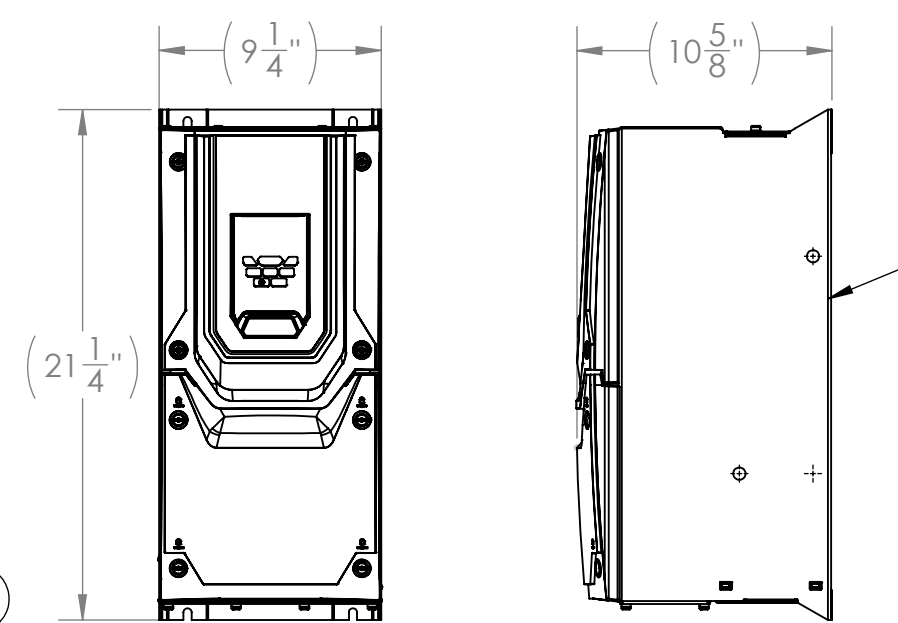
REVISIONS				
REV.	DESCRIPTION	DATE	REV. BY	APPROVED



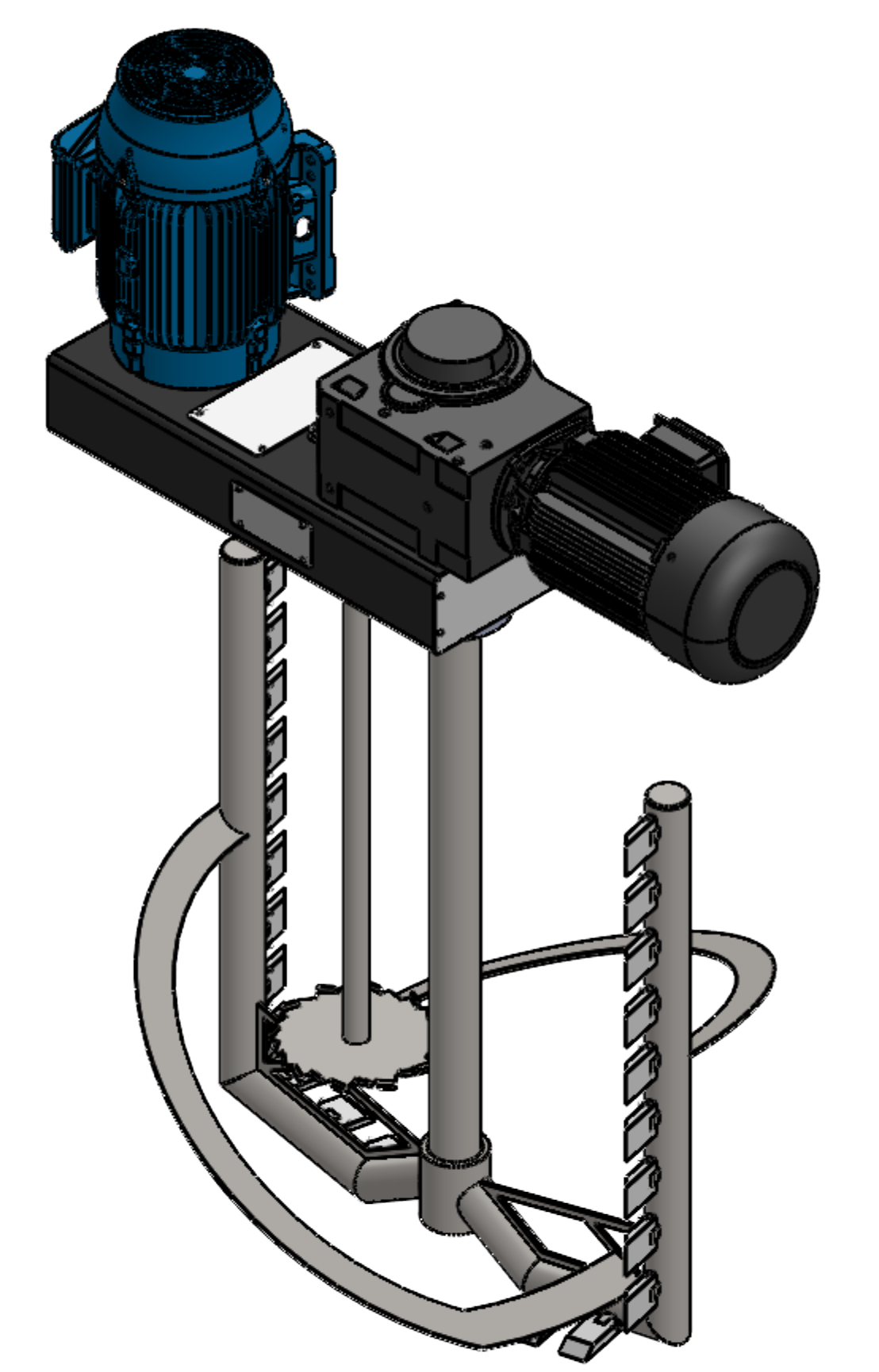
DETAIL D
SCALE 1 : 4



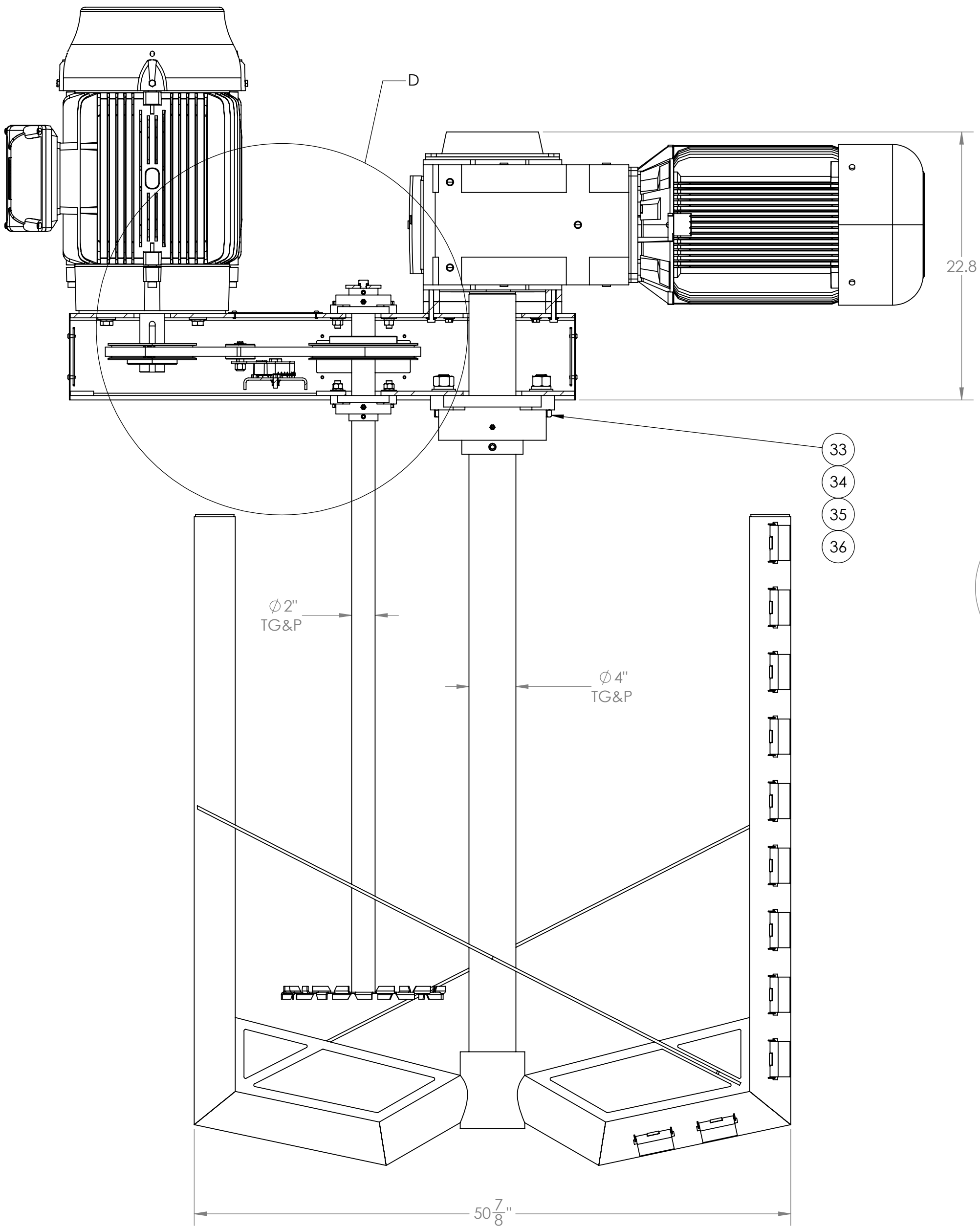
25 HP ANCHOR MIXER VFD - SHIPPED LOOSE



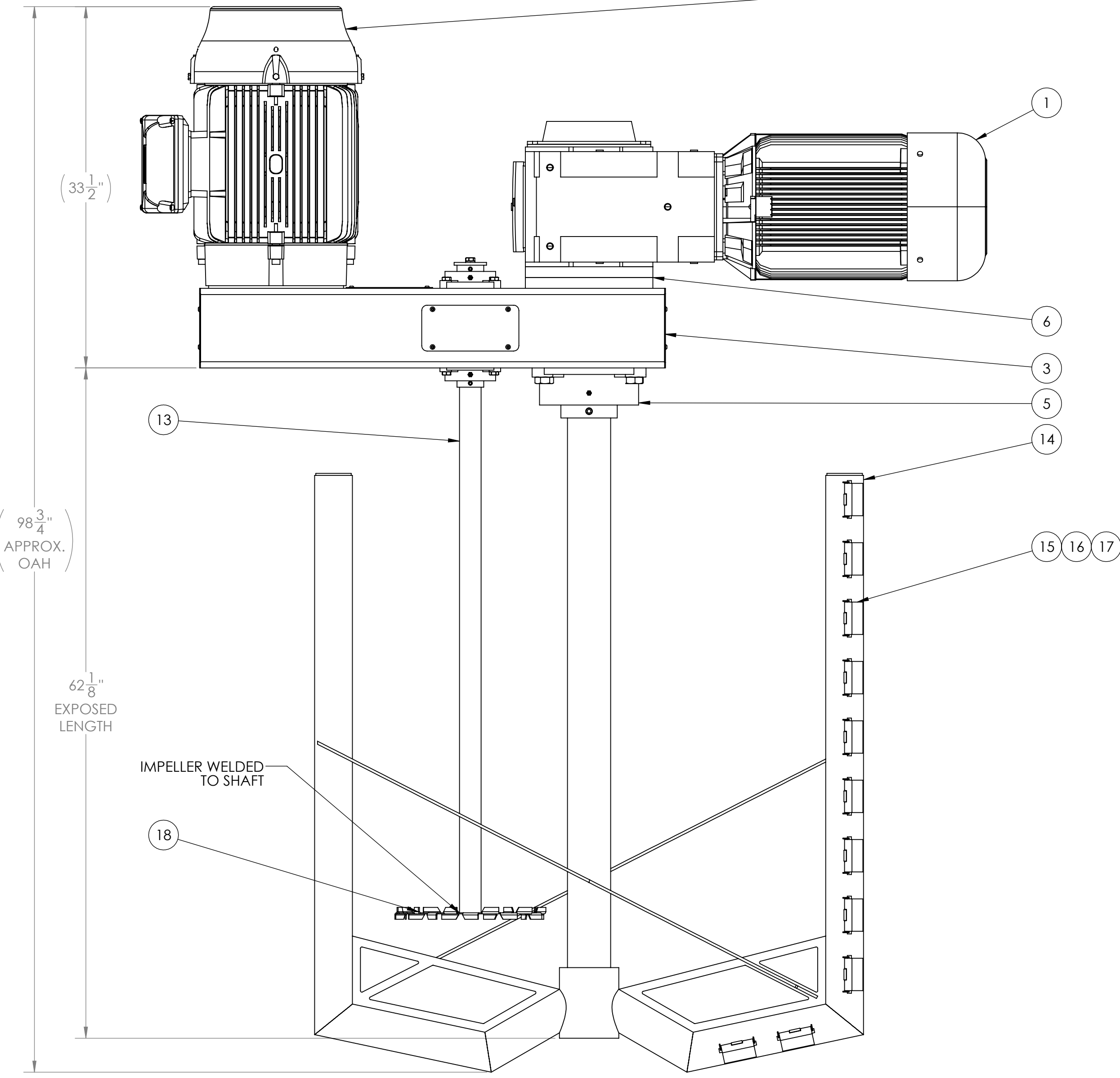
50 HP DISPERSER MIXER VFD - SHIPPED LOOSE



ISOMETRIC VIEW
SCALE 1:16



SECTION C-C



ITEM NO.	DESCRIPTION	MATERIAL	QTY.
1	25 HP GEARMOTOR, 25 HP TEFC. MOTOR, 230-460V/3PH/60HZ, 5:1 TURNDOWN RATED, PREMIUM EFFICIENT INTEGRAL MOTOR DESIGN, 62.42:1 PREMIUM HELICAL BEVEL GEARBOX, SK 9052.1 FRAME, 29 RPM OUTPUT AT 60HZ, 2.938" HOLLOW SHAFT, B14 FLANGE, HOLLOW SHAFT COVER, OIL SIGHT GLASS, SYNTHETIC LUBRICANT	SEVERE DUTY COATING, BLACK	1
2	50 HP TEFC MOTOR, INVERTER DUTY, 20:1 TURNDOWN RATING, PREMIUM EFFICIENT, 208-230/460V/3PH/60HZ, 4 POLE (1750RPM), IP55, CAST IRON, 324/61C	CARBON STEEL	1
3	CUSTOM CROSSBEAM CASING - 18.75" 7" X 43" OAL - FOR 18" WIDE BRIDGE, 18" BELT CD	PAINTED CARBON STEEL	1
4	2" 4-HOLE FLANGE BEARING, SET SCREW LOCKING, UCF210-32	CARBON STEEL	2
5	4-BOLT FLANGE BEARING, UCFX SERIES, 4" BORE	CARBON STEEL	1
6	300mm B14 GEARBOX PILOT SPACER, 1" THICK	304 SS	2
7	2517 TAPER-LOCK BUSHING - 2.125" BORE - KEYED	CAST IRON	1
8	3020 TAPER-LOCK BUSHING - 2" BORE - KEYED	CAST IRON	1
9	POLYCHAIN PULLEY - 14mm PITCH - 20mm BELT - 40 TOOTH - TAPER-LOCK 2517	CAST IRON	1
10	POLYCHAIN PULLEY - 14mm PITCH - 20mm BELT - 50 TOOTH - TAPER-LOCK 3020	CAST IRON	1
11	POLYCHAIN BELT - 14mm PITCH - 20mm WIDTH - 112 TOOTH - 1568mm LENGTH	PUR	1
12	FENNER RT3000 WITH 1.25" WIDE SMOOTH SHEAVE, 42LB MAX FORCE	VARIOUS	1
13	Ø2" TGP SHAFT - 60" OAL WITH WELDED DISPERSION BLADE	316 SS	1
14	MIXER ANCHOR - WELDED DESIGN WITH SCRAPERS AND HELICALS, FOR 54" OD 56" STRAIGHT SIDE VESSEL	316 SS	1
15	KETTLE SCRAPER - 3"x4.5"x0.75"	NYLON CAST TYPE 6	23
16	QD SCRAPER HINGE PIN, 3/8" X 3" USABLE	316L SS	23
17	HAIR PIN - 5/64"Ø, 1.3" LONG	316 SS	46
18	14" DISPERSION BLADE - .375" BORE, WELDED TO SHAFT	316 SS	1
19	TEM GEARBOX SAFETY PLATE, SMALL	316 SS	1
20	3/8"-16 X 2.5" FLAT HEAD SOCKET BOLT	STAINLESS STEEL	1
21	3/8"-16 X 3.5" HEX BOLT	STAINLESS STEEL	7
22	3/8" FLAT WASHER	STAINLESS STEEL	8
23	3/8" SPLIT LOCK WASHER	STAINLESS STEEL	8
24	3/8"-16 HEX NUT	STAINLESS STEEL	1
25	1/2"-13 X 1.5" HEX BOLT	STAINLESS STEEL	1
26	1/2"-13 X 2" HEX BOLT	STAINLESS STEEL	8
27	1/2" FLAT WASHER	STAINLESS STEEL	8
28	1/2" SPLIT LOCK WASHER	STAINLESS STEEL	9
29	1/2"-13 HEX NUT	STAINLESS STEEL	8
30	5/8"-11 X 1.5" HEX BOLT	STAINLESS STEEL	4
31	5/8" FLAT WASHER	STAINLESS STEEL	4
32	5/8" SPLIT LOCK WASHER	STAINLESS STEEL	4
33	1"-8 X 3.00" HEX BOLT	STAINLESS STEEL	4
34	1" FLAT WASHER	STAINLESS STEEL	4
35	1" SPLIT WASHER	STAINLESS STEEL	4
36	1"-8 HEX NUT	STAINLESS STEEL	4
37	25 HP SPED CONTROLLER - DIGITAL RPM READOUT - 380-480/3PH - PROGRAMMED FOR 29 RPM - IP66 - SHIPPED LOOSE	NEMA 4X	1
38	50 HP SPEED CONTROLLER - DIGITAL RPM READOUT - 380-480V/3PH - PROGRAMED FOR 120-1400 RPM - P2, IP55 - SHIPPED LOOSE	NEMA 4X	1

NOTES:
1. SEE SHEET #1.

UNLESS OTHERWISE SPECIFIED, DIMENSIONS ARE IN INCHES (mm)	NAME: CLC	DATE: 9/28/2022	PART NO: MXSD7306-001
TOLERANCES: ALL ±.125	APP. BY: KSC	FABRICATION: 10/3/2022	CUSTOMER: CURLIMIX INC.
MACHINING: X 1.5, X 2.1, X 2.5, X 3.0, X 3.5, X 4.0, X 4.5, X 5.0, X 5.5, X 6.0, X 6.5, X 7.0, X 7.5, X 8.0, X 8.5, X 9.0, X 9.5, X 10.0	PROPERTY AND CONFIDENTIAL: THE INFORMATION CONTAINED IN THIS DRAWING IS THE SOLE PROPERTY OF AWD PROCESS. ANY REPRODUCTION IN PART OR AS A WHOLE WITHOUT THE WRITTEN PERMISSION OF AWD PROCESS IS PROHIBITED.	AS NOTED	4650 NEW MIDDLE ROAD JEFFERSONVILLE, IN 47130 USA SALES@AWDPROCESS.COM PHONE: (812) 222-4847 FAX: (888) 811-4623
ANGLE: ALL ±1°	AWD PROCESS	#4 WETTED	TITLE: CUSTOM TOP ENTRY MIXER - 25HP ANCHOR MIXER - 50 HP DISPERSER MIXER AND DRIVE SYSTEM
			DWG. NO. S07306-001
			SCALE: 1:8 WEIGHT (LBS): 2061 SHEET 3 OF 4