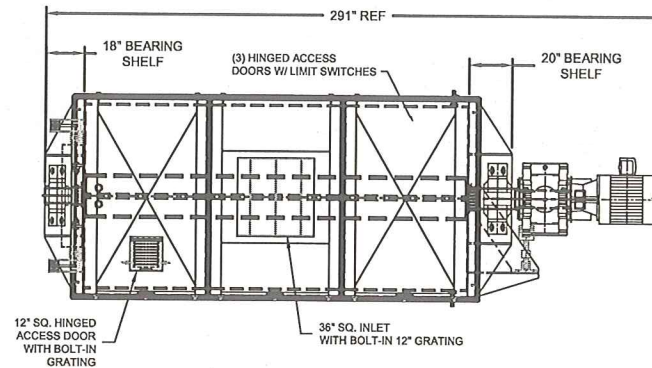


MIXER SPECIFICATIONS:

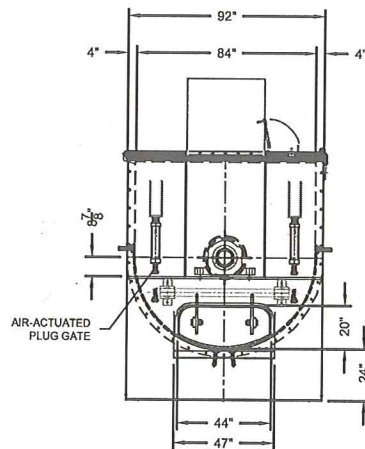
84" x 180" PADDLE MIXER
 519 CU. FT. CAPACITY @ 90% OF TOTAL 577 CU. FT.
 304 STAINLESS STEEL CONSTRUCTION ON ALL
 PRODUCT CONTACT POINTS
 CARBON STEEL ON ALL ELSE
 3/8" TUB AND 1/2" ENDPLATES
 INTERIOR FINISH: 80-100 GRIT FINISH
 EXTERIOR FINISH: GLASS BEAD
 SEALS: SCOTT SPLIT DESIGN PACKING GLAND SEALS
 AGITATOR: 20" SCHEDULE 80 MAIN SHAFT
 COVER: SOLID (3) PIECE 12 GA. HINGED ACCESS DOORS
 DISCHARGE: (1) 44" WIDE FLUSH MOUNT PLUG GATE
 DRIVE END BEARING: 9-7/16" DODGE ISAF
 IDLE END BEARING: 6 15/16" DODGE ISAF

DRIVE ASSEMBLY:

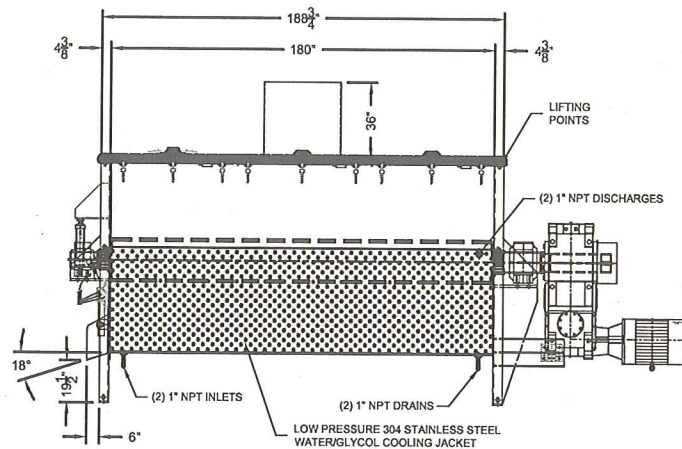
100 HP GEAR HEAD HOLLOW BORE TYPE REDUCER W/ 1.7 S.F.
 100 HP IEEE 841 SEVERE DUTY DIRECT COUPLED MOTOR
 (3ph/230-460v/60hz) W/ 1.15 S.F.
 FINAL AGITATOR SPEED: 10 RPM



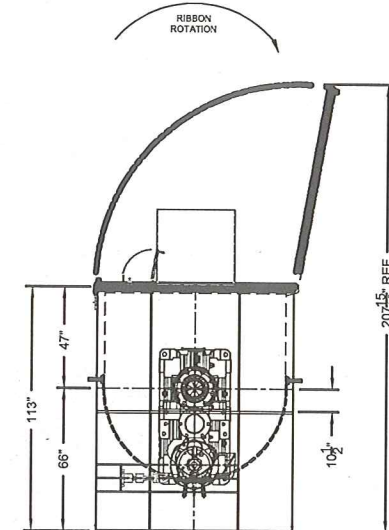
PLAN VIEW



IDLE END VIEW



ELEVATION VIEW



DRIVE END VIEW

SIGNED: _____
 DATE: _____

- ☐ APPROVED AS SUBMITTED
- ☐ APPROVED AS NOTED
- ☐ UPDATE & RESUBMIT

THIS PROJECT WILL NOT PROCEED UNTIL THE DRAWING IS SIGNED, MARKED AS APPROVED, AND RETURNED. DELAY IN RETURNING THIS DRAWING WILL AFFECT THE DELIVERY SCHEDULE.

DRAWN FOR: STANDARD PROCESS

REVISIONS			NOTICE		TOLERANCES		SCOTT		SCOTT EQUIPMENT COMPANY	
REV	DESCRIPTION	DATE	THIS DRAWING AND ALL DESIGNS, DETAILS, INVENTIONS OR DEVELOPMENTS COVERED THEREBY ARE CONFIDENTIAL AND THE EXCLUSIVE PROPERTY OF SCOTT EQUIPMENT COMPANY WHICH RESERVES ALL PATENT OR OTHER RIGHTS. COPYING, REPRODUCTION OR PUBLICATION, IN WHOLE OR IN PART, IS FORBIDDEN UNLESS EXPRESSLY AUTHORIZED BY SCOTT EQUIPMENT COMPANY. THIS DRAWING AND ANY SUCH COPIES SHALL BE RETURNED WHEN REQUESTED AND USED SUBJECT TO ABOVE CONDITIONS ONLY ON AUTHORIZED COMPANY WORK.		DEC 1, 200 ±	1:1000 ±	DATE	TITLE	NO.	REV
F	Removed counterweights from covers per customer request	10/23/12			FRACTIONAL ±	ANG ±	DRN V. Hanson	08/10/12	84" X 180" PADDLE MIXER	
E	Covers were hinged from opp. side. Raised & extended discharge chute: 18" was 30", 6" was 2", 19-1/2" was 19-1/16"	10/23/12					ENG	DATE	12-130_MIX_8415_F	F
D	Decreased freeboard height 3": 47" was 50", 113" was 116"	09/17/12					SCALE	NO.		
LTR										