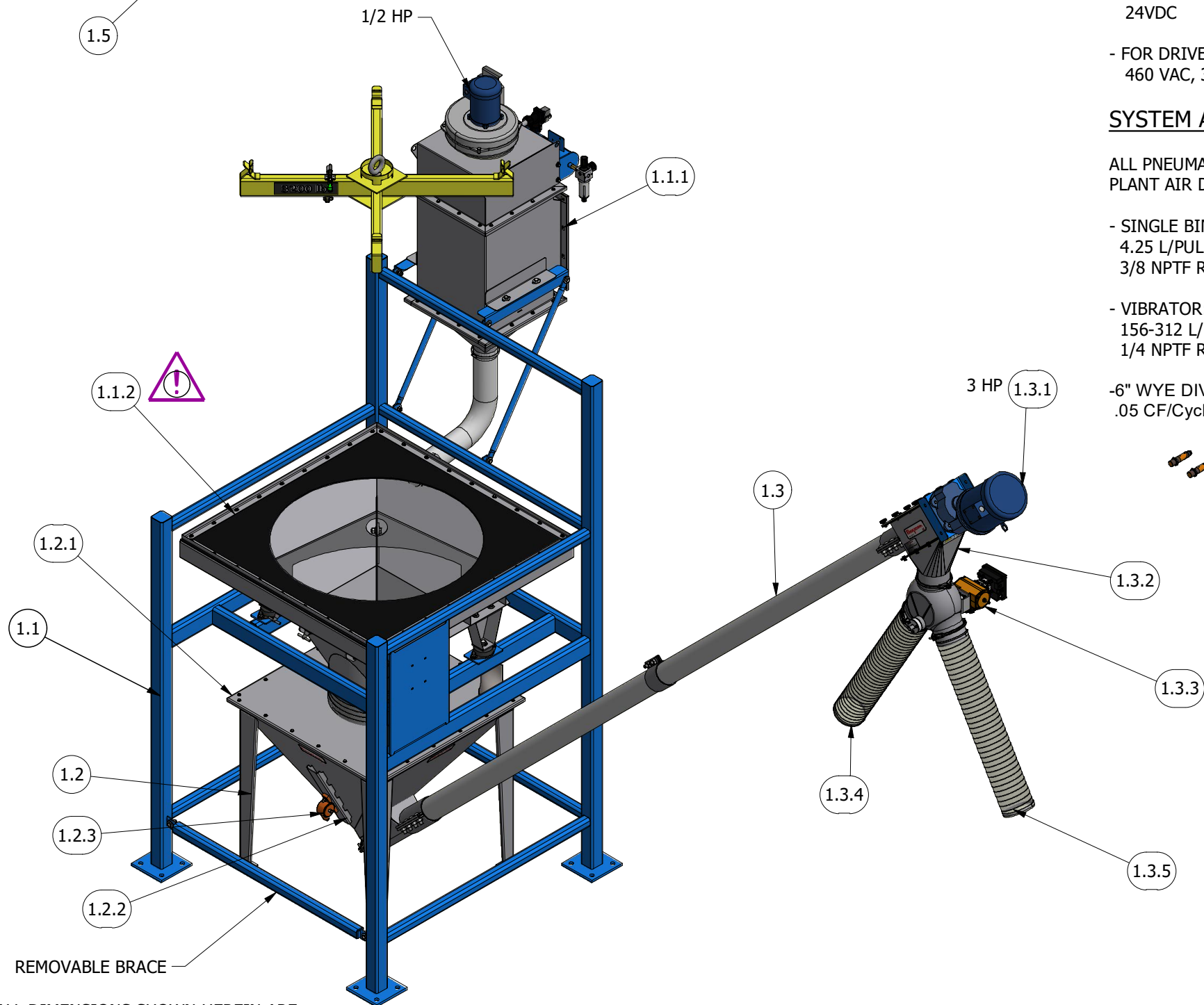


CONTROL PANEL REQUIRES FIELD MOUNTING AND EXTERNAL WIRING. CONTROL PANEL SHOWN IS ONLY A REPRESENTATIVE IMAGE; SIZE AND SPECIFICS WILL BE FINALIZED DURING THE ELECTRICAL ENGINEERING PROCESS. IF CUSTOMER HAS ANY CONCERNS REGARDING FIELD MOUNTING THE CONTROL PANEL (E.G. SIZE OR RESTRICTIONS), PLEASE CONTACT FLEXICON TO DISCUSS THIS ISSUE.



ALL DIMENSIONS SHOWN HEREIN ARE DUAL UNITS, MILLIMETERS [INCHES], UNLESS OTHERWISE SPECIFIED.

SYSTEM ELECTRICAL REQUIREMENTS: **NOTES:**

- SYSTEM OPERATING VOLTAGE:
460 VAC, 3 PH, 60 Hz
- FOR VIBRATOR:
24 VDC
- FOR PROXIMITY LEVEL SWITCH:
20-250 Volts AC/DC, 250 mA MAX
- FOR BIN VENT AND DIVERTER SOLENOID VALVES:
24VDC
- FOR DRIVE MOTORS:
460 VAC, 3 PH, 60 Hz

- CUSTOMER TO CUT CONVEYOR TO LENGTH IN FIELD TO SUIT.
- CUSTOMER TO SUPPORT CONVEYOR PER INSTALLATION AND OPERATION MANUAL.
- CUSTOMER TO USE M12 CLASS 8.8 [Ø1/2 GRADE 5] HARDWARE TO ANCHOR HOPPER TO FLOOR.
- THE BULK BAG DISCHARGER HALF-FRAME SHOWN IS DESIGNED FOR "BULK BAGS" THAT ARE 914 [36] SQ. EMPTY (AND BULGE TO 1219 [48] SQ. WHEN FULL).
- THE BULK BAG LIFTING FRAME IS RATED FOR 1451.5 kg [3200 LB] BAG MAXIMUM.

SYSTEM AIR REQUIREMENTS:

ALL PNEUMATIC SYSTEMS REQUIRE CLEAN, DRY PLANT AIR DELIVERED AS FOLLOWS:

- SINGLE BIN VENT:
4.25 L/PULSE [0.15 CF/PULSE], 5.5 BAR [80 PSIG]
3/8 NPTF REGULATOR
- VIBRATOR:
156-312 L/MIN [5.5-11 CFM], 4.1 BAR [60 PSIG]
1/4 NPTF REGULATOR
- 6" WYE DIVERTER:
.05 CF/Cycle, 70 PSIG, 3/8" NPTF REGULATOR.

- CUSTOMER TO USE M20 CLASS 8.8 [Ø3/4 GRADE 5] (MINIMUM) HARDWARE TO ANCHOR BULK BAG DISCHARGER FRAME TO FLOOR. FLEXICON RECOMMENDS THAT CUSTOMER CONSULTS WITH A CIVIL ENGINEER OR LOCAL PROFESSIONAL ENGINEER TO EVALUATE FLOOR SUBSTRATES AND SPECIFY THE TYPE AND DEPTH OF FLOOR ANCHORS.

- THIS IS AN UNGUARDED AREA WHICH PERMITS ACCESS TO POTENTIALLY HAZARDOUS ELEMENTS OF THE EQUIPMENT. IT IS THE RESPONSIBILITY OF THE CUSTOMER AND END USER TO ENSURE THAT FINAL INSTALLATION OF THIS EQUIPMENT CONFORMS TO ALL APPLICABLE SAFETY REGULATIONS.

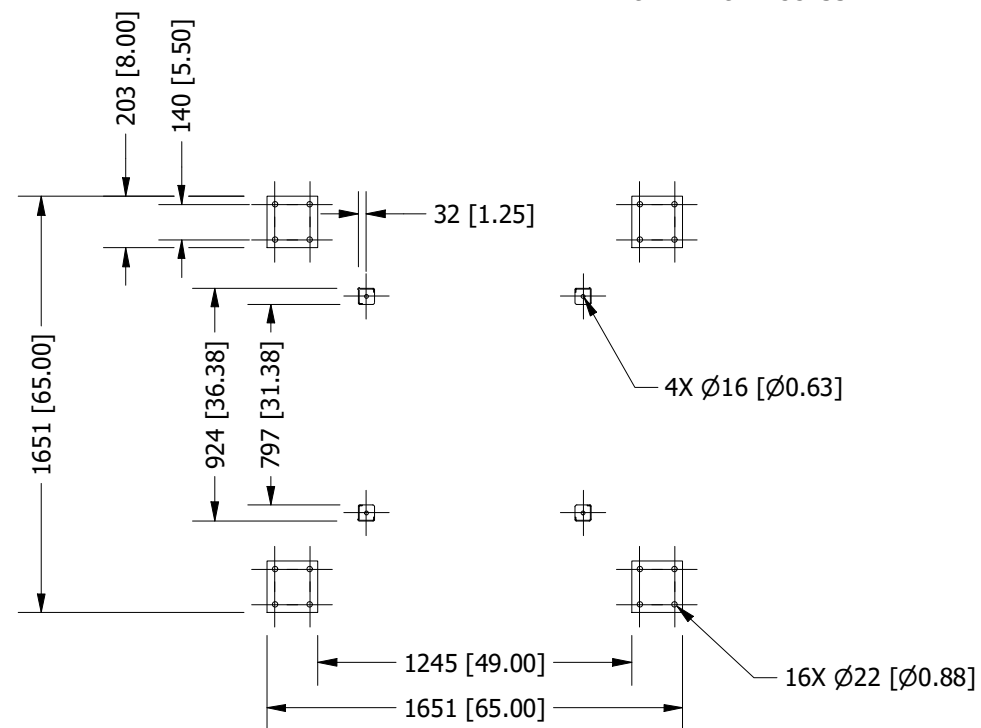
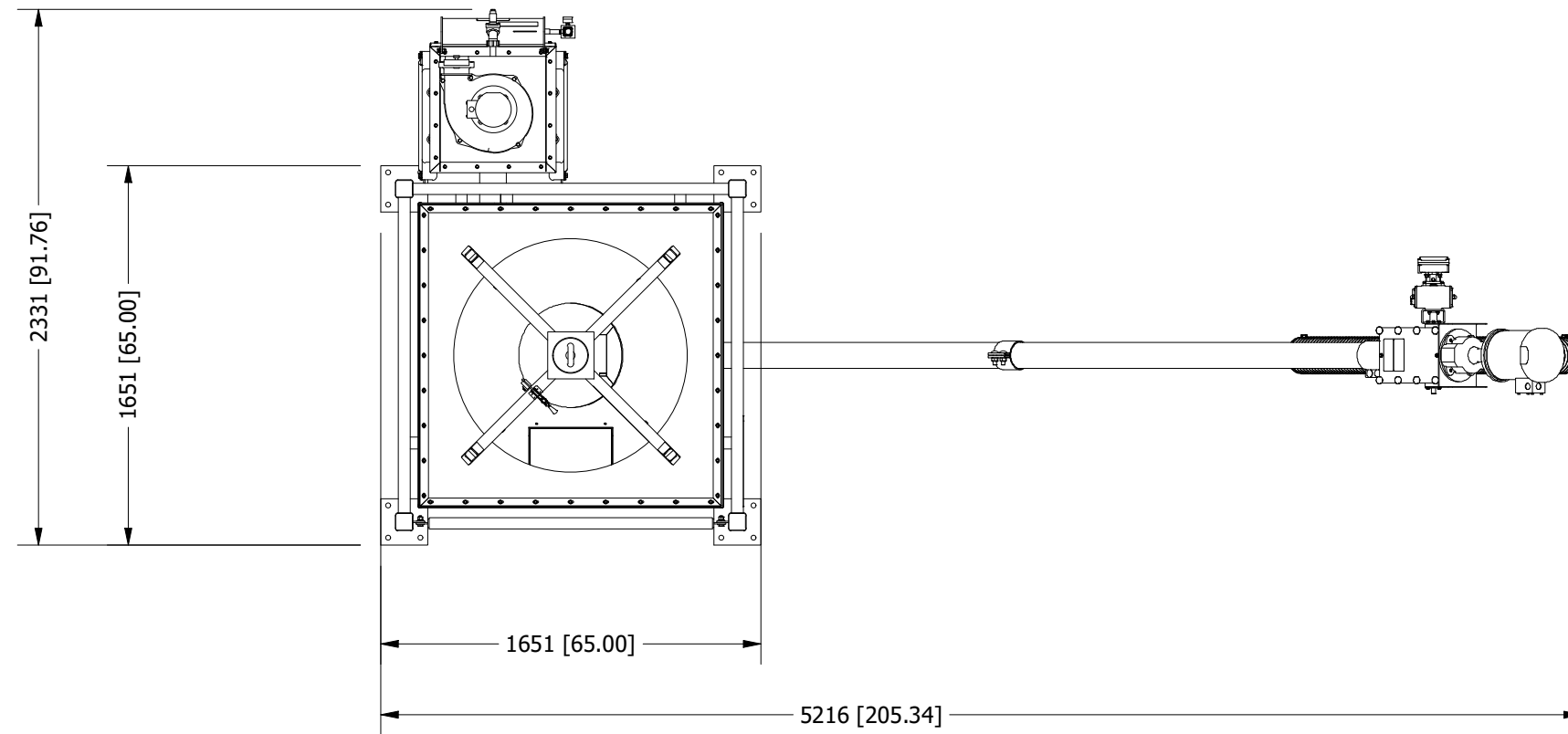


1.4
CUSTOMER TO MOUNT IN EXISTING PACKAGING MACHINE HOPPERS

CUSTOMER APPROVAL	
<input type="checkbox"/>	APPROVED Documents are approved as submitted. Fabrication can proceed.
<input type="checkbox"/>	APPROVED AS NOTED Documents are approved with changes noted on documents. Fabrication can proceed.
<input type="checkbox"/>	REVISE AND RESUBMIT Documents are NOT approved as submitted. Revise and resubmit documents.
SIGN: _____	
DATE: _____	

CUSTOMER: GREEN GRO	
CUSTOMER P.O.:	QUOTE No: TFC2021-001042
The information embodied in this drawing, including equipment designs and process concepts, are strictly confidential and proprietary to Flexicon Corporation. This document shall not be disclosed or submitted to, nor shall any designs or concepts included herein be shared with any third party without the prior written consent of Flexicon Corporation. Flexicon Corporation reserves all manufacturing, patent, copyright and other proprietary rights to this drawing. All information contained herein are copyright © Flexicon Corporation 1999-2021. All rights reserved.	

 2400 Emrick Boulevard Bethlehem, PA 18020-8006 USA Tel: 1-888-FLEXICON Tel: 1-610-814-2400 Fax: 1-610-814-0600		TITLE: ARRANGEMENT- 98297- SYSTEM 01	
		APPROVED BY:	APPROVED DATE:
DRAWN BY: jMeisinger-MacDonald	DATE: Apr 29 2021	SALES ORDER No: 98297	
DRAWING No: TFC-00294566	REV A	SHEET 1 OF 3	



SECTION "A-A"
SCALE = 1 : 30

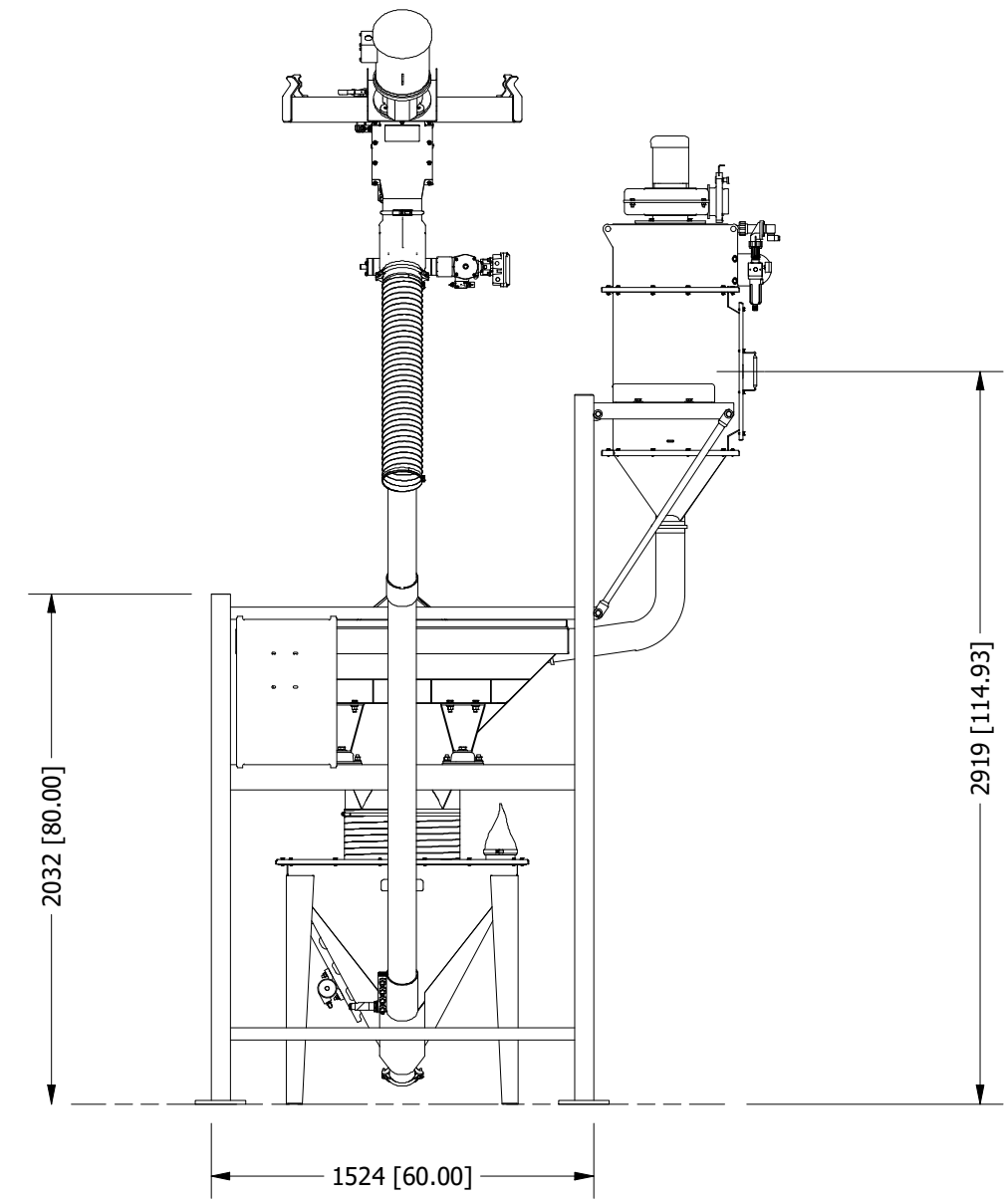
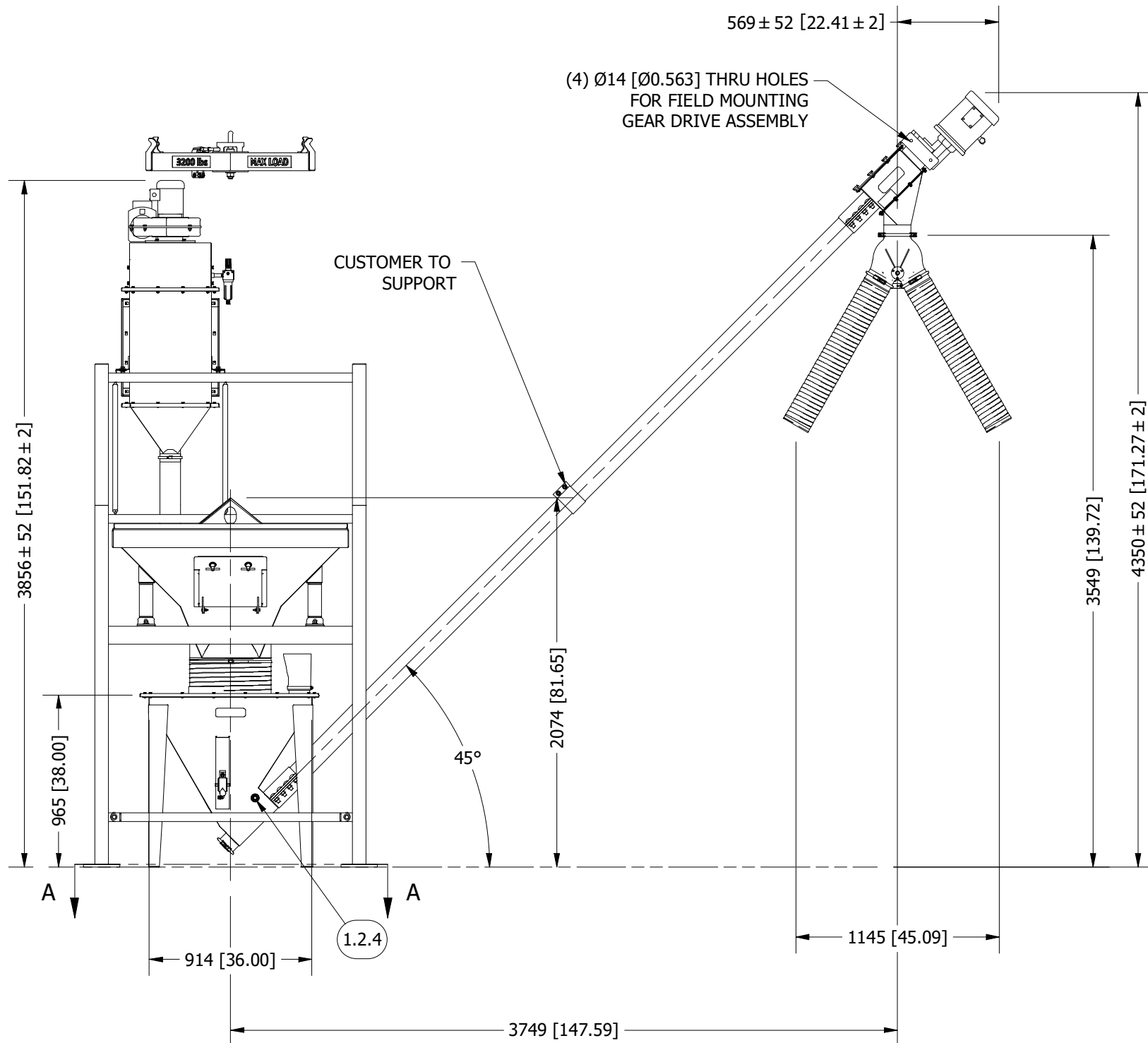
ALL DIMENSIONS SHOWN HEREIN ARE DUAL UNITS, MILLIMETERS [INCHES], UNLESS OTHERWISE SPECIFIED.

FOOTPRINT MOUNTING DIMENSIONS ARE FOR REFERENCE ONLY. DUE TO FABRICATION TOLERANCES, ALL EQUIPMENT SHOULD BE LOCATED AND ANCHORED AT THE TIME OF INSTALLATION.

CUSTOMER APPROVAL	
<input type="checkbox"/>	APPROVED Documents are approved as submitted. Fabrication can proceed.
<input type="checkbox"/>	APPROVED AS NOTED Documents are approved with changes noted on documents. Fabrication can proceed.
<input type="checkbox"/>	REVISE AND RESUBMIT Documents are NOT approved as submitted. Revise and resubmit documents.
SIGN: _____	
DATE: _____	

CUSTOMER: GREEN GRO	
CUSTOMER P.O.:	QUOTE No: TFC2021-001042
The information embodied in this drawing, including equipment designs and process concepts, are strictly confidential and proprietary to Flexicon Corporation. This document shall not be disclosed or submitted to, nor shall any designs or concepts included herein be shared with any third party without the prior written consent of Flexicon Corporation. Flexicon Corporation reserves all manufacturing, patent, copyright and other proprietary rights to this drawing. All information contained herein are copyright © Flexicon Corporation 1999-2021. All rights reserved.	

		2400 Emrick Boulevard Bethlehem, PA 18020-8006 USA Tel: 1-888-FLEXICON Tel: 1-610-814-2400 Fax: 1-610-814-0600
TITLE: ARRANGEMENT- 98297- SYSTEM 01		
APPROVED BY:	APPROVED DATE:	SCALE: 1 : 30
DRAWN BY: jMeisinger-MacDonald	DATE: Apr 29 2021	SALES ORDER No: 98297
DRAWING No: TFC-00294566	REV A	SHEET 2 OF 3



ALL DIMENSIONS SHOWN HEREIN ARE DUAL UNITS, MILLIMETERS [INCHES], UNLESS OTHERWISE SPECIFIED.

CUSTOMER APPROVAL

APPROVED
Documents are approved as submitted. Fabrication can proceed.

APPROVED AS NOTED
Documents are approved with changes noted on documents. Fabrication can proceed.

REVISE AND RESUBMIT
Documents are NOT approved as submitted. Revise and resubmit documents.

SIGN: _____

DATE: _____

CUSTOMER: GREEN GRO

CUSTOMER P.O.: _____ QUOTE No: TFC2021-001042

The information embodied in this drawing, including equipment designs and process concepts, are strictly confidential and proprietary to Flexicon Corporation. This document shall not be disclosed or submitted to, nor shall any designs or concepts included herein be shared with any third party without the prior written consent of Flexicon Corporation. Flexicon Corporation reserves all manufacturing, patent, copyright and other proprietary rights to this drawing. All information contained herein are copyright © Flexicon Corporation 1999-2021. All rights reserved.

flexicon®
2400 Emrick Boulevard
Bethlehem, PA 18020-8006
USA
Tel: 1-888-FLEXICON
Tel: 1-610-814-2400
Fax: 1-610-814-0600

Flexicon Corporation
www.flexicon.com

TITLE: ARRANGEMENT- 98297- SYSTEM 01

APPROVED BY: _____ APPROVED DATE: _____ SCALE: 1 : 30

DRAWN BY: jMeisinger-MacDonald DATE: Apr 29 2021 SALES ORDER No: 98297

DRAWING No: TFC-00294566 REV A SHEET 3 OF 3