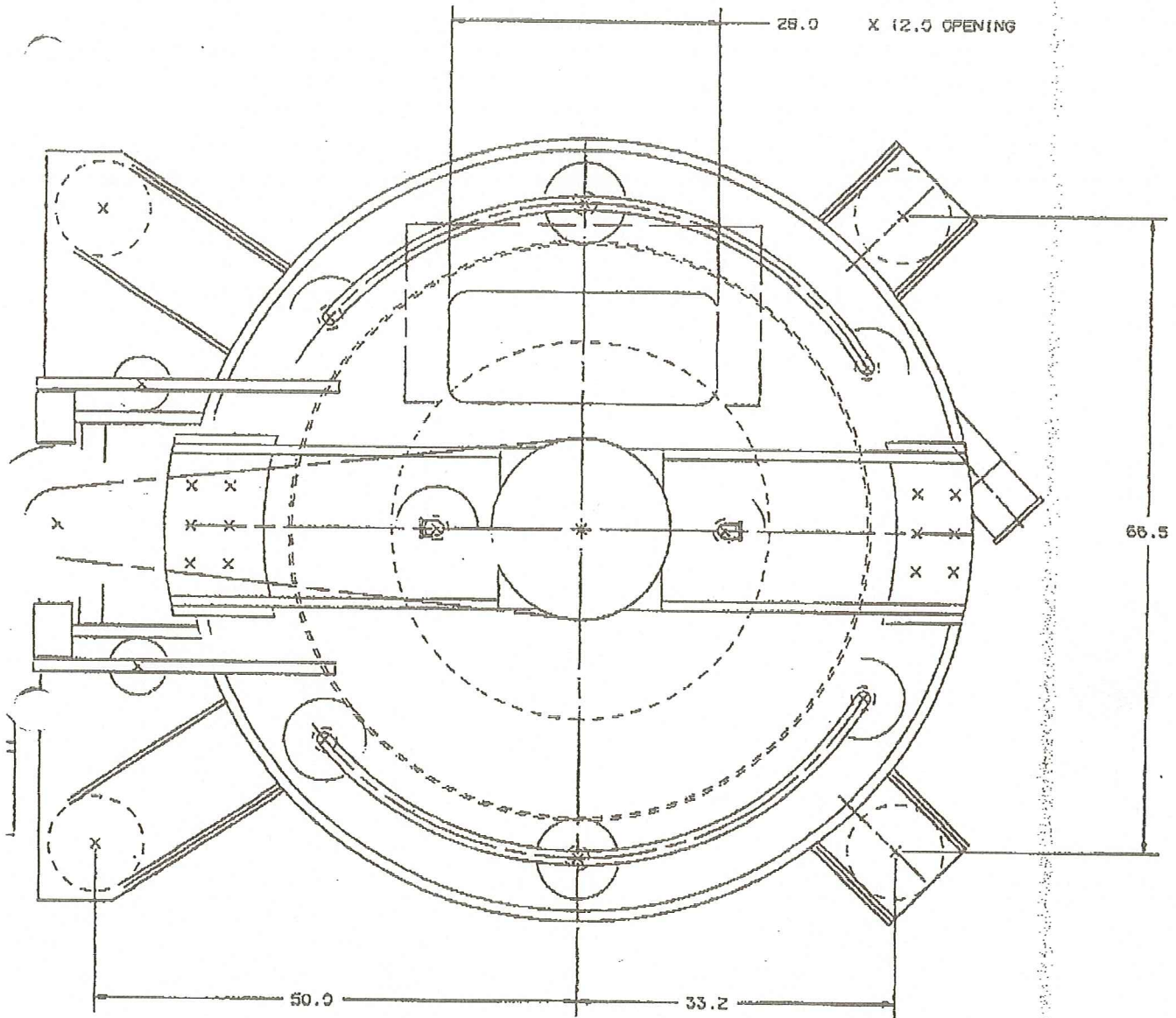


EST MACHINE WT = 6400° EMPTY
 WT OF ROTATING PARTS = 2300°
 WR² OF ROTATING PARTS = 4700° FT²
 LOAD VOLUME = 36 FT³
 LOAD DENSITY MAXIMUM = 60°/FT³
 LOAD WT AT 25°/FT³ = 900°
 WR² OF PRODUCT AT 25°/FT³ = 4450°FT²

M.
6
6
8



CYCLE TIMES

LOAD 1 MIN

ACCELERATION 1 MIN

SPIN 2.5 MIN

BRAKING 1 MIN

DISCHARGE TIME = 1 MIN

TOTAL CYCLE TIME = 6.5 MIN

9.2 CYCLES PER HOUR

EST. 6400 DRY PRODUCT/CYCLE

CAPACITY = 59000/HOUR

ROTATION SPEED = 655 RPM

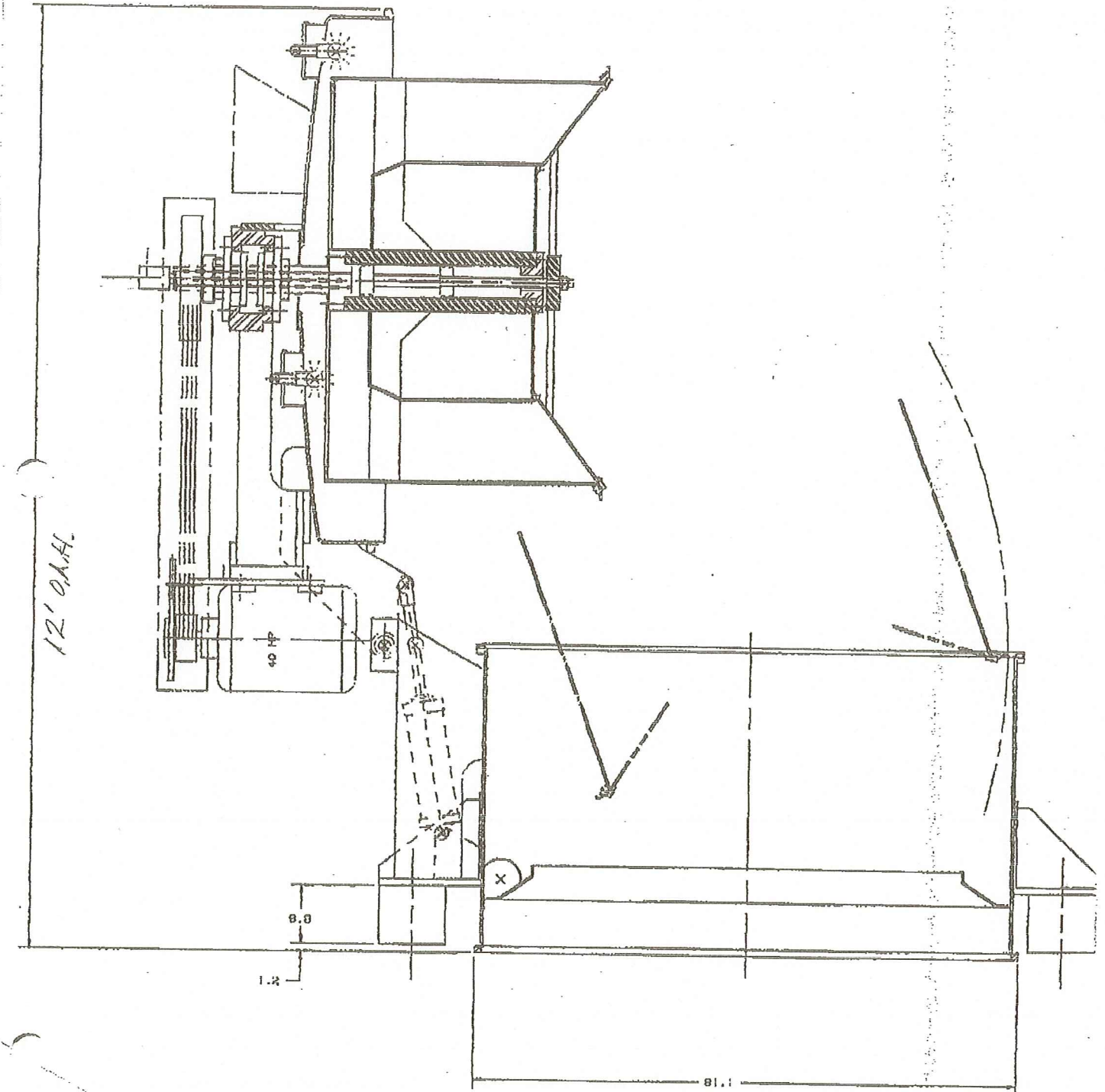
WEIGHT

NET WEIGHT = 366

MAXIMUM DIA = 305

HEIGHT = 244

2



EST M
 WT CF
 WR² G
 LOAD
 LOAD
 LOAD
 WR² G

