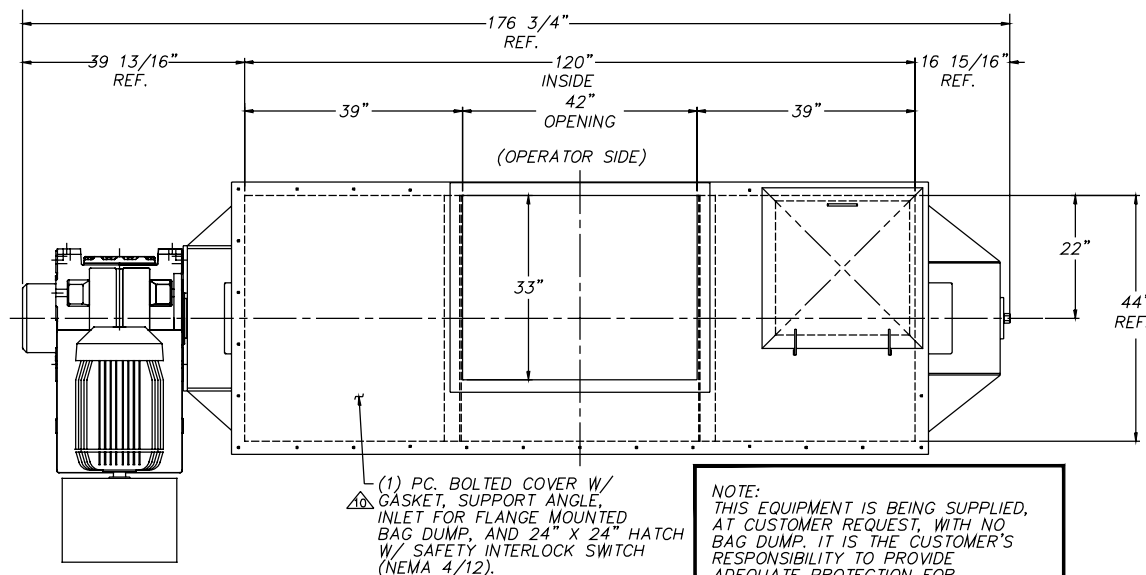


1) CONSTRUCTION:
TANK: 1/4" (0.250") THK SA240-304SS
ENDPLATES: 1/4" THK 304SS
JACKET: 14 GA. (0.0751) SA240-304SS
WRAPPER: 14 GA. 304SS
BEARING PLATES & GUSSETS (D.E.): 1/2" THK. 304SS
BEARING PLATES & GUSSETS (N.D.E.): 1/4" THK. 304SS
REDUCER MOUNTING PLATE: 3/4" THK. 304SS
SHAFT: 6" DIA 304SS CLOCKWISE ROTATION
POSTS: (8) 3/4" THK 304SS
INNER RIBBONS: 1/2" x 304SS WITH BREAKER BARS
PADDLES: 1/2" 304SS (1 MAX. CLEARANCE).
COVER: 10 GA. 304SS
BELT GUARD: 14 GA. HRS W/ EXPANDED METAL
(PAINTED WITH SAFETY YELLOW EPOXY)
LEGS & EXTENSIONS: 4" x 8" x 1/4" RECTANGULAR TUBING 304SS

- 2) ALL WELDS ARE CONTINUOUS. ALL INTERIOR WELDS ARE GROUND SMOOTH & POLISHED. EXTERIOR WELDS ARE GROUND FLUSH.
- 3) ALL PRODUCT CONTACT SURFACES ARE POLISHED TO A #4 SANITARY FINISH
- 4) ALL EXTERIOR SS SURFACES TO HAVE A MILL FINISH
- 5) DRIVE COMPONENTS TO BE PRIMED & PAINTED WITH STAINLESS STEEL EPOXY.

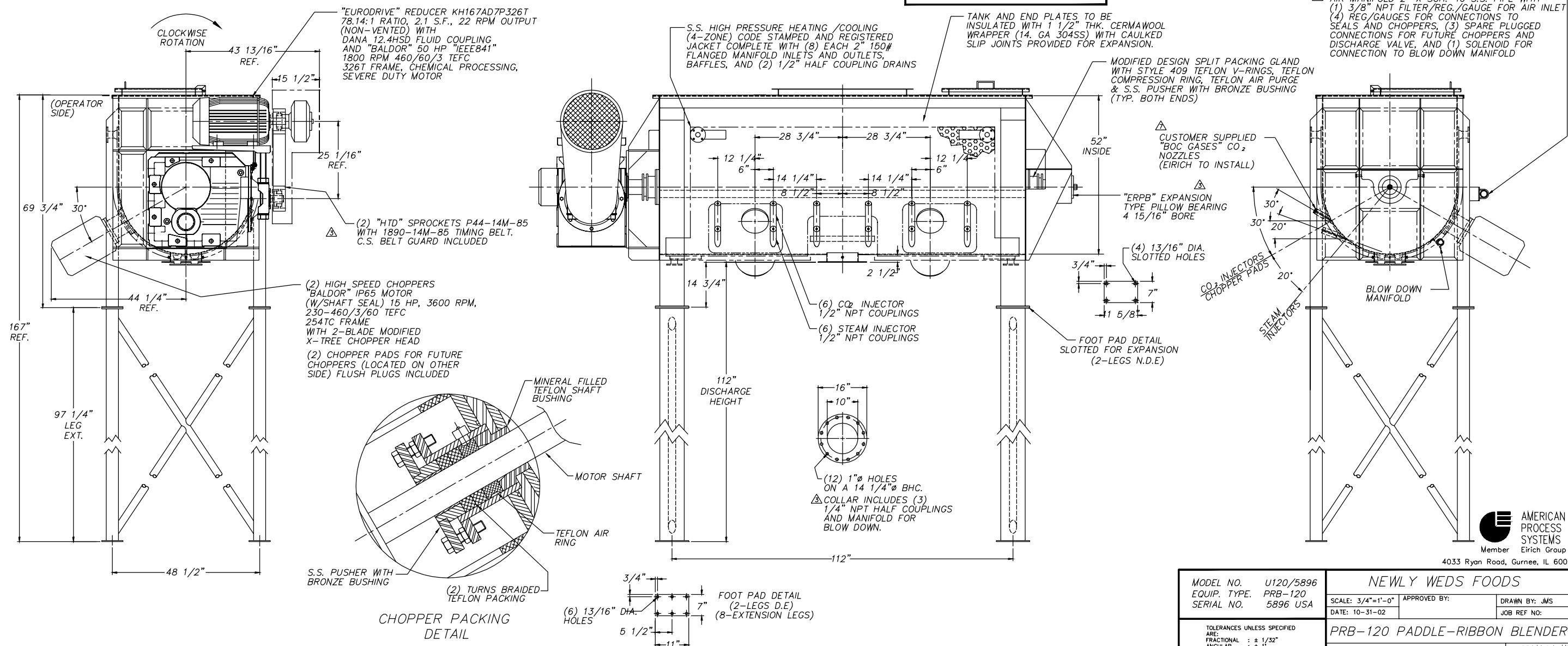


NOTE:
THIS EQUIPMENT IS BEING SUPPLIED,
AT CUSTOMER REQUEST, WITH NO
BAG DUMP, IT IS THE CUSTOMER'S
RESPONSIBILITY TO PROVIDE
ADEQUATE PROTECTION FOR
OPERATOR SAFETY AND TO COMPLY
WITH ALL OSHA & ANSI REGULATIONS.

NO.	DATE	BY	DESCRIPTION OF REVISION	CHKD BY
①	11-5-02	JMS	CHANGES PER CUSTOMER AND ENGINEERING	
②	11-11-02	J.L.A.	CHANGED ROTATION	
③	12-3-02	AG	CHANGES PER CUSTOMER.	
④	12-10-02	AG	CHANGED HEIGHT, HELD DISCHARGE HEIGHT.	
⑤	1-28-03	JMS	(6) CO2 AND (6) STEAM INJECTORS LOCATED	
⑥	2-25-03	JMS	CHANGES PER ENG. AND CUSTOMER	
⑦	3-7-03	JMS	CO2 NOZZLES TO BE SUPPLIED BY CUSTOMER	
⑧	3-20-03	JMS	LOWERED JACKET SIDES PER CUSTOMER	
⑨	3-27-03	JMS	ADDED 1/8" MAX. CLEARANCE PER CUSTOMER	
⑩	4-23-03	AG	ADDED AIR MANIFOLD	
⑪	5-1-03	JMS	ADDED COVER DETAIL.	
⑫	5-1-03	AG	ADDED DISCHARGE HEIGHT PER CUSTOMER	

JACKET DESIGNED PER THE ASME
CODE, SECTION VIII, DIVISION 1,
2001 EDITION, 2002 ADDENDA

NOTES:
NO RADIOGRAPHY & HEAT
TREATMENT REQUIRED,
HYDROTEST AT 180 PSIG IN
HORIZONTAL POSITION.



AMERICAN
PROCESS
SYSTEMS
Member Firth Group

4033 Ryan Road, Gurnee, IL 60031

MODEL NO. U120/5896	NEWLY WEDS FOODS	
EQUIP. TYPE. PRB-120	SCALE: 3/4"=1'-0"	APPROVED BY:
SERIAL NO. 5896 USA	DATE: 10-31-02	DRAWN BY: JMS
		JOB REF NO:
TOLERANCES UNLESS SPECIFIED	PRB-120 PADDLE-RIBBON BLENDER	
ARE: FRACTIONAL: ± 1/32"	DRAWING NUMBER	
ANGULAR: ± .01	5896 00 111	
.XXX OF DECIMAL: ± .005	GENERAL ARRANGEMENT	
.XX DECIMAL: ± .001		