

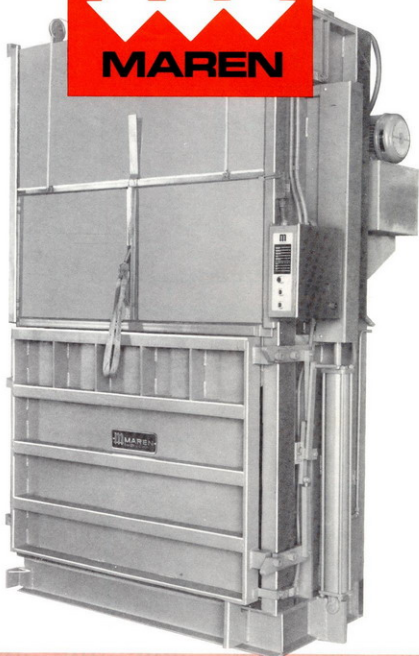
Dynamic low-profile balers



Heavy duty construction! Space Saving! Fast Operation! Safety! Four big reasons why Maren new low-profile balers surpass all other in performance and long-life dependability. Imagine, a rugged easy to operate baler that uses floor space only inches larger than the bale itself! There's more. Extra heavy "ramming" produces high density bales that pack more material . . . save even more space. Powerful side mounted twin hydraulic cylinders make possible the new "low-profile" that lets this, the biggest, big size vertical baler fit easily below standard ceiling heights. Safe, easy operation begins with filling baler and closing the door. The ram compresses each load only after the door is securely closed and locked. After tying bale the upward ram movement engages an automatic bale ejector. No back doors. No pushing, prying or tugging. Maren "low-profile" baling is fast, economical and safe. Compare these features:

- Engineered for safe performance.
- Produces high density bales.
- Front charging, tying, and ejection.
- Quiet operation ● Mechanical bale ejection
- Counterbalance AVD Door.
- "Pop-proof" ejector door.
- Moving parts enclosed ● Three capacities
- Utilizes minimum floor space.
- Extra heavy duty construction.
- Low center of gravity ● No top-heaviness
- Automatic or manual actuating.
- Automatic safety power shut-off when doors open.
- Three models, 36, 48, 60 in. bales.

*Each of these three low profile models is also available on special order, to produce super high density bales. Contact Maren Engineering for specifications.



THREE SIZES . . . THREE OPERATION OPTIONS!

There's a "dynamic" Maren low-profile baler for every use in industrial plants, supermarkets, mass merchandisers and businesses of every type.

Model 2036 — Bale: 20" w x 34" h x 36" l.

Model 2048 — Bale: 30" w x 40" h x 48" l.

Model 2060 — Bale: 30" w x 48" h x 60" l.



AVD (Automatic Vertical Loading Door), the space saving door. Push button ram activation. Automatic door opening.

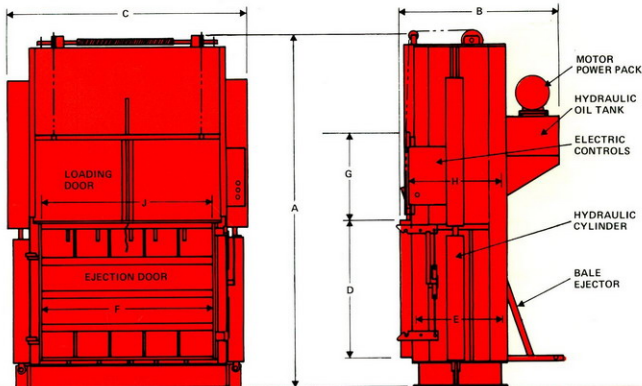


Side Swing door. Automatic push button or manual lever ram activation.



Bottom Swing door. Automatic push button or manual lever ram activation.

Maren low-profile vertical balers in three big sizes... forming 36", 48", or 60" bales.



| Overall Dimensions | 2036 | 2048 | 2060 |
|-----------------------|----------------|----------------|----------------|
| A. Height | 86"* | 103"* | 118"*** |
| B. Width | 26" | 34" | 56"* |
| C. Length | 50" | 66" | 82" |
| Baling Chamber | | | |
| D. Height | 30" | 34" | 48" |
| E. Width | 20" | 30" | 30" |
| F. Length | 36" | 48" | 60" |
| Feeder-Hopper | | | |
| G. Height | 20" | 25" | 30" |
| H. Width | 20" | 30" | 30" |
| J. Length | 36" | 48" | 60" |
| Capacity | 8.3 cubic ft. | 20 cubic ft. | 33-1/3 cu. ft. |
| Product Bale: | | | |
| Height | 34" | 40" | 50" |
| Width | 20" | 30" | 30" |
| Length | 36" | 48" | 60" |
| Volume | 14.2 cubic ft. | 33-1/3 cu. ft. | 52 cu. ft. |

| | 2036 | 2048 | 2060 |
|---|------------|------------|------------|
| Number of Bale Ties | 4 | 4 | 5 |
| Motor, 230/460 Volts, drip-proof, 3 phase, 60 cycle** | 5 HP | 5 HP | 10 HP |
| Stroke Cycle (seconds) | 15 | 42 | 45 |
| Total Weight of Press | 2,300 Lbs. | 4,100 Lbs. | 7,100 Lbs. |

2036

*Can be lowered to 74" if hydraulics mounted on back

**Also available at 75 seconds stroke cycle with 1 HP, 115 volt motor.

2048

*Can be lowered to 91" if hydraulics mounted on back.

2060

*38" without power pack projection

**124" including ram cover when ram is in upper position.

MAREN . . . for the biggest choice in balers and baling accessories. Select from the nation's largest line. Achieve maximum productivity with the right piece of equipment for every need from the nation's leading baler manufacturer.

- Vertical balers ● Horizontal balers ● Portable balers ● Open end balers ● Special material balers
- Automatic bale tiers ● Pinch conveyors ● Shredders



MAREN ENGINEERING CORPORATION | P.O. Box 278, South Holland, Ill. 60473

Qualified local sales and service through Maren's more than 80 coast-to-coast representatives.