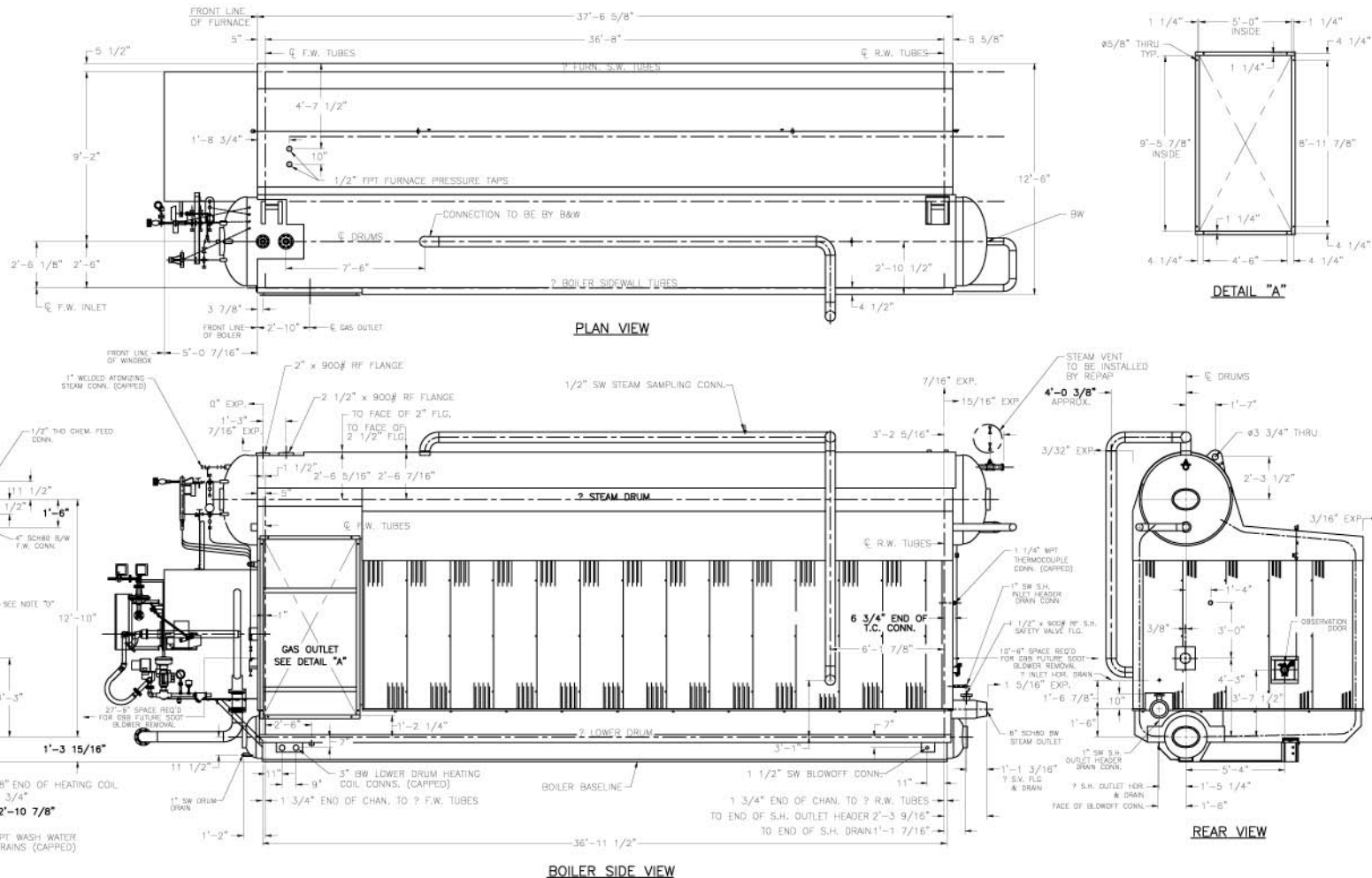


BOILER DATA

CAPACITY	201,000 LB/HR
DESIGN PRESSURE	1000 P.S.I.G.
OPERATING PRESSURE	885 P.S.I.G.
OPERATING TEMP	750°F
BOILER HEATING SURFACE	7,893 SQ.FT.
SUPERHEATER HEATING SURFACE	650 SQ.FT.
FURNACE VOLUME	2,646 CU.FT.
TOTAL WEIGHT OF BLR. EMPTY	209,000 LBS.
CASING DESIGN PRESSURE	32" WC
TOTAL SHIPPING WEIGHT	218,000 LBS.



NOTICE TO PURCHASER - REFER TO CONTRACT FOR MATERIAL TO BE SUPPLIED BY THE BABCOCK & WILCOX COMPANY. MATERIAL SHOWN UPON THIS DRAWING NOT INCLUDED IN THE CONTRACT WILL NOT BE SUPPLIED WITHOUT SUPPLEMENTARY AGREEMENT. MATERIAL NOT SUPPLIED BY B&W WILL BE DULY NOTED.

B&W SCOPE ENDS WITH 8" SCH80 BW OUTLET FOR CONNECTION TO STEAM LINE. WEIGHT OF OUTLET STEAM PIPING MUST BE SUPPORTED INDEPENDENT OF BOILER. THE PIPING MUST ALSO BE DESIGNED SO THAT THE MAXIMUM FORCES AND MOMENTS IMPOSED ON THE OUTLET ARE LESS THAN 1000 LBS. FORCE IN ANY DIRECTION OR 4000 FT-POUNDS MOMENT IN ANY DIRECTION, RESPECTIVELY.

B&W SCOPE ENDS WITH THE SAFETY VALVE OUTLETS. ADEQUATE DISCHARGE PIPING FROM THE SAFETY VALVES MUST BE PROVIDED BY THE PURCHASER. DISCHARGE PIPING SHOULD BE INDEPENDENTLY SUPPORTED AND CAREFULLY ALIGNED. B&W RECOMMENDS THE USE OF WELDED OR FLANGED DISCHARGE DRIP PAN ASSEMBLIES AND PIPING. DISCHARGE PIPING THAT IS SUPPORTED BY ONLY THE SAFETY RELIEF VALVE WILL INDUCE STRESS IN THE SAFETY RELIEF VALVE & INLET PIPING. FORCED ALIGNMENT OF THE DISCHARGE PIPING WILL ALSO INDUCE SUCH STRESS. THE EXHAUST PIPING CONNECTED RIGIDLY TO A SAFETY VALVE MAY SERIOUSLY INJURE THE VALVE BY EXPANSION STRAINS. THE DISCHARGE PIPING MUST ALSO PROVIDE FOR ADEQUATE DRAINAGE.

NOTE "A":
DRAINS SHOULD BE PIPED BY PURCHASER TO A NEARBY SUMP FOR VISUAL CONDENSATE INSPECTION DURING BLOWDOWN.

NOTE "B":
4" 900# FEEDWATER STOP & CHECK VALVES ARE TO BE INSTALLED IN PURCHASER PIPE. F.W. CONN. HAS BEEN ROUTED UNDER CASING TO FRONT OF BOILER FOR EASE OF CONNECTION.

NOTE "C":
DRUM & FURNACE TO BE INSPECTED & SHIPPING BRACE REMOVED PRIOR TO FIRING. THE FOLLOWING LINES ARE TO BE INSULATED BY THE PURCHASER: 1) BLOWDOWN 2) STEAM OUTLET

NOTE "D":
A WATER-TIGHT ENCLOSURE, 11 1/2" WIDE x 8" HIGH x 5 1/2" DEEP WILL BE INSTALLED BY B&W TO PROVIDE A TERMINAL STRIP FOR CUSTOMER CONNECTIONS TO DRUM TEMPERATURE SENSORS. SENSORS WILL BE TERMINATED INSIDE ENCLOSURE BY B&W.

REPAW WISCONSIN
B&W CONTRACT #201-3222
KIMBERLY, WI

2	REVISED PER CUSTOMER COMMENTS	JA	9/24/96	TT
1	REVISED PER CUSTOMER COMMENTS	JA	3/14/96	TT

BABCOCK & WILCOX CO.

A McDermott COMPANY

THIS DRAWING IS THE SOLE PROPERTY OF THE WILCOX & BABCOCK COMPANY. IT IS NOT TO BE REPRODUCED OR TRANSMITTED IN ANY FORM OR BY ANY MEANS, ELECTRONIC OR MECHANICAL, INCLUDING PHOTOCOPYING, RECORDING, OR BY ANY INFORMATION STORAGE AND RETRIEVAL SYSTEM, WITHOUT THE WRITTEN PERMISSION OF WILCOX & BABCOCK. ANY VIOLATION WILL BE PROSECUTED TO THE FULL EXTENT OF THE LAW.

GENERAL ARRANGEMENT
FM120-124 L.H. BOILER

DESIGN	JATRES	2/21/96	DRAWING NO.		REV.
CHECKED	JAT	2/21/96			
APPROVED	TERRELL	2/21/96			
SCALE	DC	DATE			