

Lift & Shift With Accuracy

Oscar 600 [600kg]

Optimum Strength Compact Articulated Robot

The Oscar 600 features a rotating, tilting and slewing robotic head which can accurately align glass so it is ready for installation. The useful electric sideshift function can instantly move the machine 50mm left or right to fine-tune the placement of the load without having to waste time repositioning the robot.

With a chassis width of only 780mm and solid rubber wheels, the Oscar 600 can easily move through narrow gaps using steering wheel controls to reach confined working areas. Using a dual circuit vacuum system, its six suction pads can be securely fixed to glass, metal and window and door elements.

The Oscar 600's telescopic lifting arm extends up to 900mm and comes with an articulated joint combined with precision controls for accuracy.

Reference Code

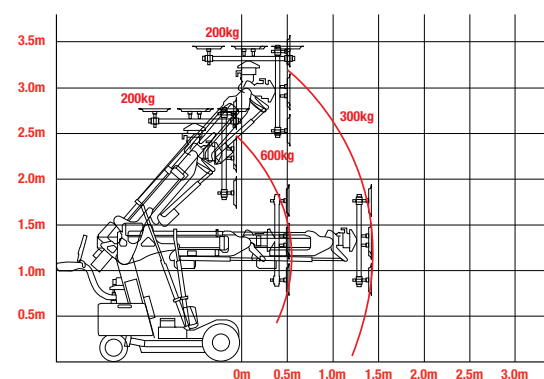
GRG20

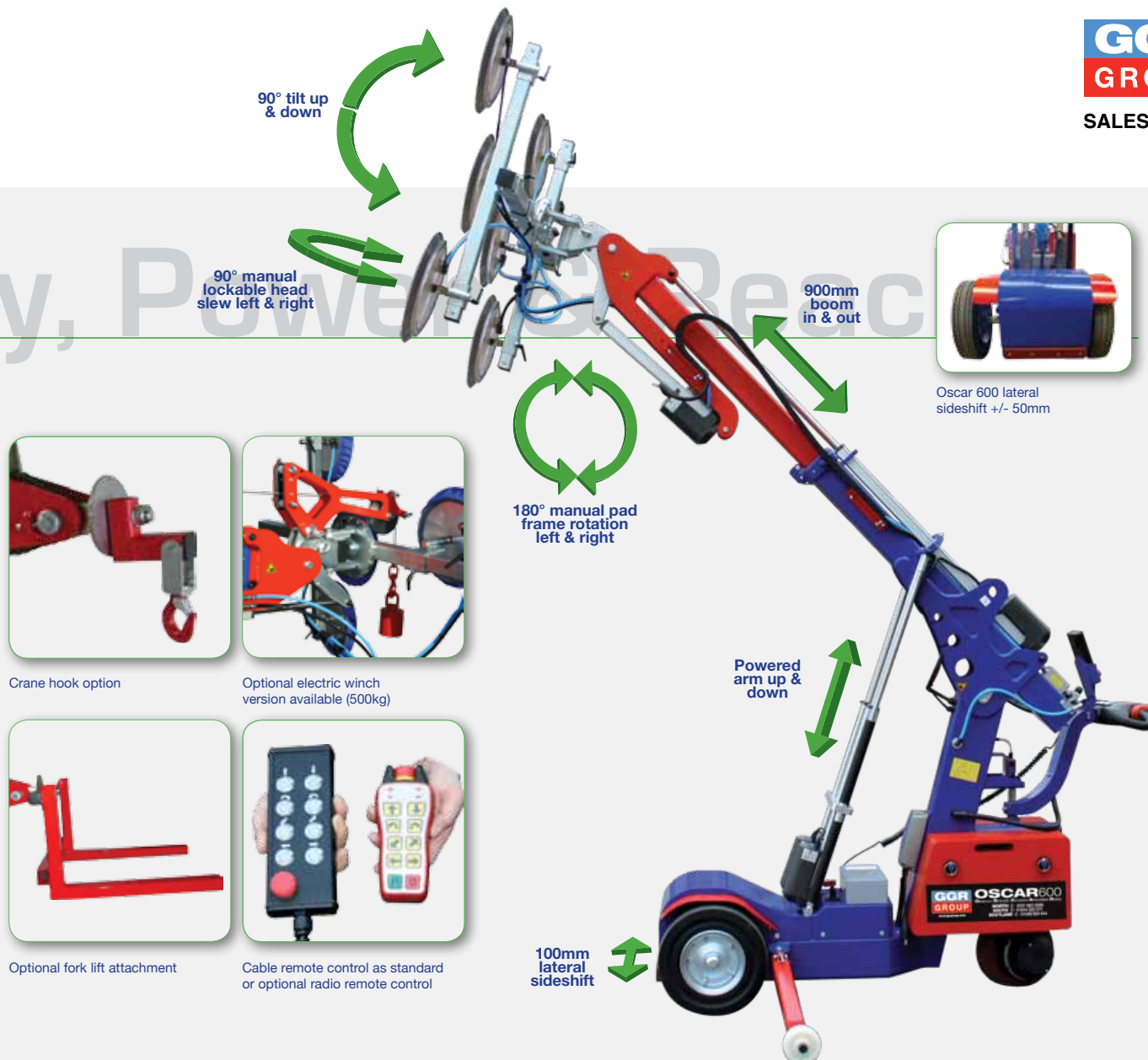


Technical Specifications

Safe working load	capacity jib 1:	600kg
	capacity jib 2:	300kg
Suitable for lifting	material properties:	gastight / non-porous
	surface:	smooth
	example:	glass, plastic boards, ceramic plates
Weight	with counterweights:	1052kg
	without counterweights:	550kg
Width	width:	780mm
Travelling length	length:	2534mm
Travelling height	height:	1491mm
Number of suction cups	cups:	6
Powered head tilt	powered head tilt:	90° up & down
Powered lateral sideshift	powered lateral sideshift:	100mm
Manual pad frame rotation	rotation:	180° lockable left & right
Manual head slew left & right	manual head slew:	90° lockable increments left & right
Boom in & out	boom in & out:	900mm
Vacuum system	dual circuit:	2 pumps, 2 vacuum reserve tanks
Power requirements	rechargeable battery:	110v/240v charger
	pump:	24v DC (2 x 12v)

Rated Loads Diagram




Technical Data (mm)
