



DC Series

For set-up boxes and shredded materials



Key Features:

Single Tension Cylinder ~ *heavier bales*
Auto-Tie ~ Pulls the Wire Across vs. Push
On Casters ~ *for ease of cleaning*
Sub Floor & Liner System ~ *lower maintenance cost*
Standard Options ~ *greater value!*

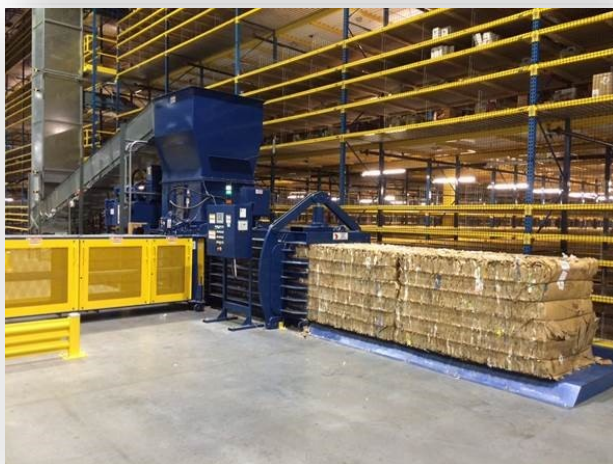
Bellevue, Ohio
800-843-7512
www.americanbaler.com

DC Series

Bale Sizes: 44"x43" x variable and 48"x43"x variable
Width: 43" and 48" wide
Hopper Lengths: 50", 63", 75"
Main Cylinder: 8" bore trunnion design
System Pressure: 2500 psi
Main Motor: 30, 50, 75 or Twin 30 HP
Feed Type: Conveyor(s), hand, cart dumper, air-fed shreds/trim
Bale Tying: Five-wire auto-tie (Pull Through Design)
Meets all current ANSI 245.51 Safety Standards

PRODUCTION OPTIONS

Additional 4' Bale Tables
Infrared sensor and alarm with wiring
Side Load Feed Hopper (Flared One Side)
2-Side Load Feed Hopper (Flared Both Sides)
Hopper Extension up to 48" (no window/door)
Hydraulic oil shipped in baler reservoir
Wire Run out Sensors
Off-Side Tier Controls
Slip sheet slot
Increase conveyor controls up to 7.5HP
Bolt-on UHMW tie slot covers
NEMA 4 upgrade
Bulk Wire System



Distributed By: