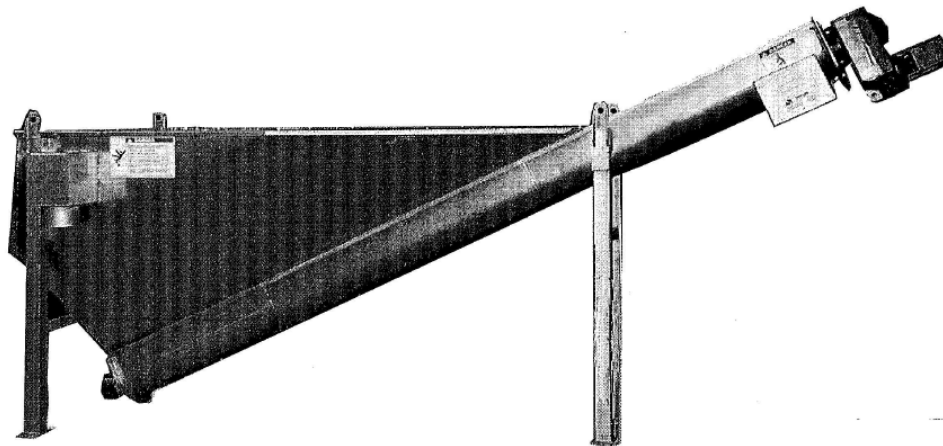


technical

bulletin

MB-349-A

SansGrit™ Sand and Grit Separator



The SansGrit sand and grit separator is a highly efficient dewatering machine designed to concentrate and remove sand, grit and other contaminants with positive settling characteristics. It also collects floatable debris and is most effective in removing heavy contaminants from secondary fiber reject streams.

CONSTRUCTION

- The SansGrit separator is fully enclosed with bolted lids on the container and spiral conveyor. An easily opened inspection lid is located near the overflow channel.
- The conveyor trough, equipped with steel wear bars, houses the shaftless spiral screw. The specially designed non-corrugated spiral conveyor eliminates the need for bearings and seals below water level. The drive unit consists of a geared motor directly mounted on the face of the spiral conveyor. The assembled unit is delivered with supports suitable for installation on a smooth surface.

FEATURES

- The conveyor, compactly designed for installation in limited space, optimizes dewatering and transport capabilities

- The single bearing is located at the top (drive) end and avoiding contamination and the problems associated with underwater locations
- The inlet design, shape of the tank and low conveyor operating speed eliminate turbulence
- The arrangement of the overflow trough prevents blockage from floating debris
- Requires a minimum of maintenance due to its direct coupled gear-motor drive, integral drive shaft bearing and lack of center shaft, hanger bearings and seals
- Showers eliminate crust forming inside the unit

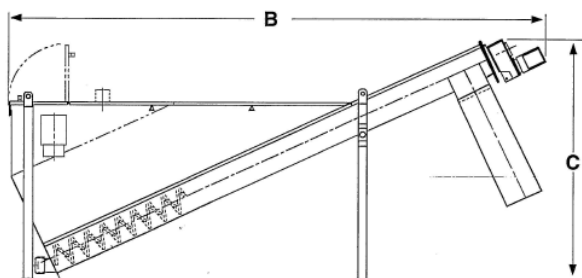
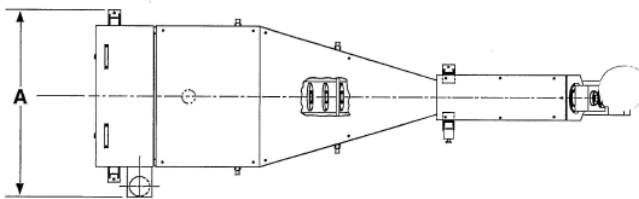
OPERATION

- Low consistency reject flows enter the SansGrit settling chamber where heavier particles – sand, glass, metal – fall to the base of the chamber
- The spiral screw transports the heavy particles slowly through the drainage zone to the discharge chute
- Separated water overflows the accept trough for reuse in the system
- Showers force floatable debris into screw for ultimate removal
- Complete controls package available

KADANT
L A M O R T

SansGrit™ Sand and Grit Separator

SansGrit Model		260	320	360	420
Maximum Flow Rate	GPM l/sec	190 12	320 20	430 27	550 35
Settling Chamber Surface Area	ft ² m ²	25 2.3	32 3.0	43 4.0	54 5.0
Settling Chamber Volume	ft ³ m ³	42 1.2	64 1.8	117 3.3	148 4.2
Rejects Discharge Rate	ft ³ /hr m ³ /hr	35 1.0	53 1.5	71 2.0	106 3.0
Conveyor Screw Speed	RPM	7.0	5.5	5.0	5.0
Overall Width "A"	in. mm	61.5 1560	73.25 1860	75.8 1925	87.6 2225
Overall Length "B"	in. mm	175.8 4465	198.6 5045	260.3 6610	275.4 6995
Overall Height "C"	in. mm	80.4 2040	91.4 2320	119.9 3045	128.2 3255
Inlet Nozzle Diameter	in. mm	4.50 114	6.63 168	8.63 219	8.63 219
Overflow Nozzle Diameter	in. mm	6.63 168	8.63 220	10.75 273	10.75 273
Motor	HP kW	0.50 0.38	0.75 0.55	1.00 0.76	1.00 0.76
Shipping Weight	lbs kg	1654 750	2536 1150	3368 1650	4360 2100
Operating Weight	lbs kg	5627 2550	8496 3850	14,564 6600	18,536 8410



NOTE: INFLUENT PIPE (CUSTOMER SUPPLIED) SHOWN IN RECOMMENDED LOCATION BUT IS TO BE INSTALLED IN THE FIELD DURING INSTALLATION.

GUARDS OMITTED FOR CLARITY

GENERAL DIMENSIONS – NOT CERTIFIED FOR CONSTRUCTION OR INSTALLATION

DIVISION

Kadant Lamort
33700 MERIGNAC France
Tel. : +33 (0)5.57.92.16.00
Fax : +33 (0)5.56.47.84.64

LICENSOR

Kadant Black Clawson Inc.

AGENTS

More than thirty agents all over the world

SUBSIDIARIES

Kadant Lamort GmbH, Germany
Kadant Lamort SA, Spain
Kadant Lamort S.r.l., Italy
Kadant Lamort Ltda, Brazil
Kadant Cyclotech, Sweden
Kadant BC Lamort UK, England

KADANT LAMORT

B.P. 46
51302 VITRY-LE-FRANCOIS Cedex
France
Tel. : + 33 (0)3.26.74.80.80
Fax : + 33 (0)3.26.72.08.33
informations@kadanteurope.com
www.kadanteurope.com



To find your local contact, refer to:

www.kadanteurope.com

KADANT
LAMORT

AN ACCENT ON INNOVATION