

# HiLight H6+

## More than meets the eye

---

**This new light tower offers low operational costs and reduced noise levels while increasing illumination coverage. It is ideal to use in tough environments, such as applications in construction, mining, and rental companies.**

The HiLight H6+ comes with the innovative **HardHat® body**, made of medium-density polyethylene rather than metal, to protect the working operation underneath from the elements. The HardHat® is **resistant to corrosion**, lightweight, crack-resistant, environmentally friendly, and better able to meet the tough demands of on-site use.

It features a new generation of LED floodlights that are more efficient and provide optimal light distribution up to **6.000 m<sup>2</sup> illumination area** with a life expectancy of 50.000 hours. To offer the right luminosity at each moment and increased autonomy, the new HiLight H6+ comes with a dimming function on the easy-to-use control panel, located in an exterior lateral of the light tower.

Maintenance and transport efficiency were a priority when designing the HiLight H6+. On the first front, the light tower only requires a **simple service** after 600 hours of operation which can be carried out in 40 minutes.



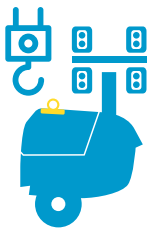
**New**

**LED Light**

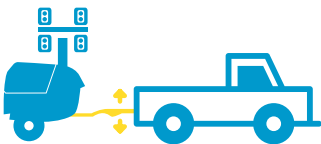
The new **HiLight H6+** comes with three different ways of transporting; the integrated lifting point, four forklift slots and three different tow bars to choose. The adjustable tow bar provides **flexibility**, as it allows users to handle and transport the HiLight H6+ easily while towing with vans, trucks, and pick-ups.



Forklift slots



Integrated lifting point



Straight / Foldable / Adjustable tow bar



One side service



**HardHat®**  
BODY

UP TO  
**40% LESS**  
FUEL AND  
CO<sub>2</sub> EMISSIONS\*

**-5dB(A)**  
LOWER NOISE

**55 dB(A)**

**40Min**  
EVERY 600 Hrs

**LIGHT COVERAGE**  
**6.000m<sup>2</sup>**  
AVG. 20LUXES

**LIFE SPAN**  
**50.000**  
Hrs

\*with dimming function

# Choose the one that best fits your needs

|                   | Segments                       | Energy Efficiency | Running hours | Area coverage | Easy movement | Lamps durability | Service interval | Transport efficiency |
|-------------------|--------------------------------|-------------------|---------------|---------------|---------------|------------------|------------------|----------------------|
| HiLight Z3+       | EVENTS   CONSTRUCTION          | ●                 | ●             | ○             | ○             | ●                | ●                | ●                    |
| HiLight H6+       | CONSTRUCTION   QUARRY   EVENTS | ●                 | ●             | ●             | ●             | ●                | ●                | ●                    |
| HiLight B5+       | ROAD WORKS   EVENTS            | ●                 | ●             | ●             | ○             | ●                | ●                | ●                    |
| HiLight V4+       | CONSTRUCTION   QUARRY          | ●                 | ●             | ●             | ●             | ●                | ●                | ○                    |
| HiLight V5+       | CONSTRUCTION   QUARRY          | ●                 | ○             | ●             | ●             | ●                | ●                | ○                    |
| HiLight V4        | CONSTRUCTION   QUARRY          | ○                 | ○             | ●             | ●             | ○                | ●                | ○                    |
| HiLight E3+       | EVENTS   ROAD WORKS            | ●                 | ○             | ○             | ●             | ●                | ●                | ●                    |
| HiLight P2+       | EVENTS                         | ●                 | ○             | ○             | ●             | ●                | ●                | ●                    |
| HiLight V2+ / V3+ | CONSTRUCTION   ROAD WORKS      | ●                 | ○             | ○             | ●             | ●                | ●                | ●                    |
| HiLight V4W       | CONSTRUCTION   QUARRY          | ●                 | ●             | ●             | ●             | ○                | ●                | ○                    |

● Best choice ○ Suitable

## What's unique about our LED technology?

**FUEL EFFICIENCY**

**LIFE SPAN**

**50.000 Hrs**

**LIGHT COVERAGE**

**UP TO 6.000 m<sup>2</sup>**

**AVG. 20 LUXES**

**COLOR RENDERING INDEX**

**> 85 OUT OF 100**

**INCREDIBLE LIGHT DISTRIBUTION**

**HEAVY DUTY PROTECTION**

- LED HiLight tower lamps have an aluminum casting which provides heavy duty protection, even during transportation.
- The LED lamps have a high CRI (Color Rendering Index) score (> 85 out of 100).
- The specially designed directional optics of the LED HiLight range offer incredible light distribution.
- Our LED HiLight towers achieve up to 6.000 square-metres of light coverage with an average level of 20 luxes.
- LED lamps have a life expectancy of more than 50.000 hours.
- Our LED technology enables us to set the industry benchmark when it comes to fuel efficiency.

## HiLight LED savings per year (per unit, compared to a metal halide light tower)

**1.500 Liters** **-60%**

**4.800 Kilos** **-60%**

**23 Trees** **-60%**

**3 Bulbs** **-100%**

(\*) Savings will vary depending on comparison models.

|   |          | BATTERY  |   |  |  | DIESEL                     |               |                            |               |                            |                        | ELECTRIC                |                                       |                                       |                         |
|---|----------|--|---|--|--|----------------------------|---------------|----------------------------|---------------|----------------------------|------------------------|-------------------------|---------------------------------------|---------------------------------------|-------------------------|
|   |          |  |   |  |  |                            |               |                            |               |                            |                        |                         |                                       |                                       |                         |
| <b>Light coverage m<sup>2</sup></b>           |          | 3000 (average 10 luxes)                          | 6000 (average 20 luxes)                                       | 5000 (average 20 luxes)                          | 4000 (average 20 luxes)  | 5000 (average 20 luxes)    |               | 4000 (average 20 luxes)    |               | 4000 (average 20 luxes)    |                        | 3000 (average 12 luxes) | 2000 (average 10 luxes)               | 2000 (average 10 luxes)               | 2500 (average 10 luxes) |
| <b>Lamps</b>                                  |          | LED  | LED   | LED  | LED  | LED                        |               | Metal halide               |               | Metal halide               |                        | LED                     | LED                                   | LED                                   | LED                     |
| <b>Mast</b>                                   |          | Hydraulic  | Vertical hydraulic  | Vertical hydraulic                               | Vertical manual  | Vertical manual            |               | Vertical manual            |               | Vertical manual            |                        | Vertical manual         | Vertical manual                       | Vertical manual                       | Vertical manual         |
| <b>Extra features</b>                         |          | Hydraulic Noise and CO2 free                     | HardHat® body   | Compact box                                      | HardHat® canopy  | HardHat® canopy            |               | HardHat® canopy            |               | HardHat® canopy            |                        | Electric                | Electric                              | Electric                              | Electric                |
| <b>Performance data</b>                       |          |  |   |  |  |                            |               |                            |               |                            |                        |                         |                                       |                                       |                         |
| Rated frequency                               | Hz       | -  | 50  | 50   60  | 50   60  | 50   60                    |               | 50   60                    |               | 50   60                    |                        | 50   60                 | 50                                    | 50                                    | 50                      |
| Rated voltage                                 | VAC      | -  | 230   | 230   120  | 230   120  | 230   120                  |               | 230   120                  |               | 230   120                  |                        | 230   120               | 230                                   | 230                                   | 230                     |
| Rated power (PRP)                             | kW       | -  | 2,7   | 2,5   2,8  | 2,5   2,8  | 2,5   2,8                  | 2,8   3,6     | 5,5   6,5                  | 4,8   6       | 6   8                      | 5,8   8                | -                       | -                                     | -                                     | -                       |
| Operating temperature (min/max)               | °C       | -20/50   | -20 / 40  | -20 / 40   | -25 / 50   | -25 / 50                   | -25 / >50     | -25 / 49                   | -25 / >50     | -25 / 50                   | -25 / >50              | -                       | -                                     | -                                     | -                       |
| Sound power level (LwA)                       | dB(A)    | -  | 82  | 82   | 88   | 86                         |               | 92   94                    | 98   102      | 87   89                    | 91   93                | -                       | -                                     | -                                     | -                       |
| Sound pressure level (LpA) at 7m              | dB(A)    | -  | 55  | 55   | 65   | 63                         |               | 71   73                    |               | 63   64                    | 66   71                | -                       | -                                     | -                                     | -                       |
| <b>Engine</b>                                 |          |  |   |  |  |                            |               |                            |               |                            |                        |                         |                                       |                                       |                         |
| Model   |          | -  | Kubota Z482   | Kubota Z482                                      | Kubota Z482  | Kubota Z482                | Kohler KDW702 | Kubota Z482                | Kohler KDW702 | Kubota D1105               | Kohler KDW1003         | -                       | -                                     | -                                     | -                       |
| Speed   | rpm      | -  | 1500  | 1500   1800                                      | 1500   1800  | 1500   1800                |               | 3000   3600                |               | 1500   1800                |                        | -                       | -                                     | -                                     | -                       |
| Rated net output (PRP)                        | kW       | -  | 2,7   | 2,7   3  | 2,7   3  | 2,7   3                    | 5,5   6       | 6,9   8,1                  | 11   11,5     | 8   9,5                    |                        | -                       | -                                     | -                                     | -                       |
| Coolant                                       |          | -  | Water   | Water  | Water  | Water                      |               | Water                      |               | Water                      |                        | -                       | -                                     | -                                     | -                       |
| Number of cylinders                           |          | -  | 2   | 2  | 2  | 2                          |               | 2                          |               | 3                          |                        | -                       | -                                     | -                                     | -                       |
| <b>Alternator</b>                             |          |  |   |  |  |                            |               |                            |               |                            |                        |                         |                                       |                                       |                         |
| Model   |          | -  | Meccalte LT3/75   | Meccalte LT3/75                                  | Atlas Copco ACA132B*   | Meccalte LT3/75            |               | Sincro EK 2 MCT            |               | Atlas Copco DP06/AG164     | Atlas Copco DP06/AG164 | -                       | -                                     | -                                     | -                       |
| Rated output                                  | kVA      | -  | 3,5   4,5   | 3,5   4,5  | 3   4  | 3,5   4,5                  |               | 6   7,5                    |               | 6   8                      |                        | -                       | -                                     | -                                     | -                       |
| Insulation / Enclosure protection             | class/IP | -  | H / 21  | H / 21   | H / 23   | H / 21                     |               | H / 23                     |               | H / 23                     |                        | -                       | -                                     | -                                     | -                       |
| <b>Energy Consumption</b>                     |          |  |   |  |  |                            |               |                            |               |                            |                        |                         |                                       |                                       |                         |
| Fuel tank capacity                            | l        | -  | 125   | 125  | 110  | 110                        |               | 110                        |               | 160                        |                        | -                       | -                                     | -                                     | -                       |
| Autonomy                                      | h        | 18-32 at 100% load                               | 185   | 185  | 300  | 150                        | 135   120     | 57   50                    | 50   45       | 90                         | 95                     | -                       | -                                     | -                                     | -                       |
| <b>Power output</b>                           |          |  |   |  |  |                            |               |                            |               |                            |                        |                         |                                       |                                       |                         |
| Auxiliary power                               | kW       | -  | 1,2   | 1,2  | 1  | 1                          |               | 1,4   2                    |               | 2                          |                        | -                       | -                                     | -                                     | -                       |
| <b>Lights</b>                                 |          |  |   |  |  |                            |               |                            |               |                            |                        |                         |                                       |                                       |                         |
| Floodlights                                   |          | LED  | LED   | LED  | LED  | LED                        |               | Metal halide               |               | Metal halide               |                        | LED                     | LED                                   | LED                                   | LED                     |
| Wattage                                       | W        | 4 x 160  | 4 x 350   | 4 x 350  | 4 x 250  | 4 x 350                    |               | 4 x 1000                   |               | 4 x 1000                   |                        | 4 x 160<br>1x500        | 320                                   | 320                                   | 4 x 120                 |
| <b>Mast</b>                                   |          |  |   |  |  |                            |               |                            |               |                            |                        |                         |                                       |                                       |                         |
| Type  |          | Hydraulic  | Hydraulic   | Hydraulic  | Manual vertical, 5 section   | Manual vertical, 5 section |               | Manual vertical, 5 section |               | Manual vertical, 5 section |                        | Manual                  | Manual                                | Manual                                | Manual                  |
| Rotation                                      | degrees  | 340  | 340   | 340  | 360  | 360                        |               | 360                        |               | 360                        |                        | 0                       | 0                                     | 0                                     | 0                       |
| Maximum height                                | m        | 8  | 8   | 8  | 7,5  | 7,5                        |               | 7,5                        |               | 7,5                        |                        | 7                       | 3,5                                   | 5                                     | 5,1                     |
| Maximum speed wind                            | km/h     | 80   | 80  | 80   | 80   | 80                         |               | 80                         |               | 80                         |                        | 80                      | 50                                    | 80                                    | 80                      |
| <b>Enclosure and trailer</b>                  |          |  |   |  |  |                            |               |                            |               |                            |                        |                         |                                       |                                       |                         |
| Type  |          | -  | EU Road homologated fix or adjustable towbar, or site trailer | -  | DOT US Compliant Unibody trailer with 4 point leveling system. For EU homologated check availability |                            |               |                            |               |                            | -                      | -                       | Heavy Duty Trailer with bumpers in PE | Heavy Duty Trailer with bumpers in PE |                         |
| Base frame                                    |          | Spillage free frame                              |   |  | Open Frame / Spillage Free Frame Option  | Spillage free frame        |               |                            |               | Galvanized                 | -                      | -                       | -                                     |                                       |                         |
| Enclosure                                     |          | Galvanized steel canopy and powder coating paint | HardHat® doors  | Galvanized steel canopy and powder coating paint | Gull-wing HardHat® doors   |                            |               |                            |               |                            | HardHat® canopy        |                         |                                       |                                       |                         |
| <b>Dimensions and weight</b>                  |          |  |   |  |  |                            |               |                            |               |                            |                        |                         |                                       |                                       |                         |
| Dimensions in transport Fix Towbar(L x W x H) | m        | 1,16 x 1,16 x 2,5                                | 2,09 x 1,29 x 2,5   | 1,16 x 1,16 x 2,5                                | 1,67 x 1,10 x 2,50   | 1,67 x 1,10 x 2,50         |               | 1,67 x 1,10 x 2,50         |               | 1,8 x 1,35 x 2,97          |                        | 1,13 x 0,76 x 2,2       | 0,5 x 0,5 x 2,2                       | 1,1 x 0,85 x 2                        | 1,1 x 0,85 x 2          |
| Weight  | kg       | 980  | 980   | 980  | 702  | 702                        |               | 694                        |               | 826                        |                        | 276                     | 45                                    | 110                                   | 110                     |

(\*) CE models, please consult