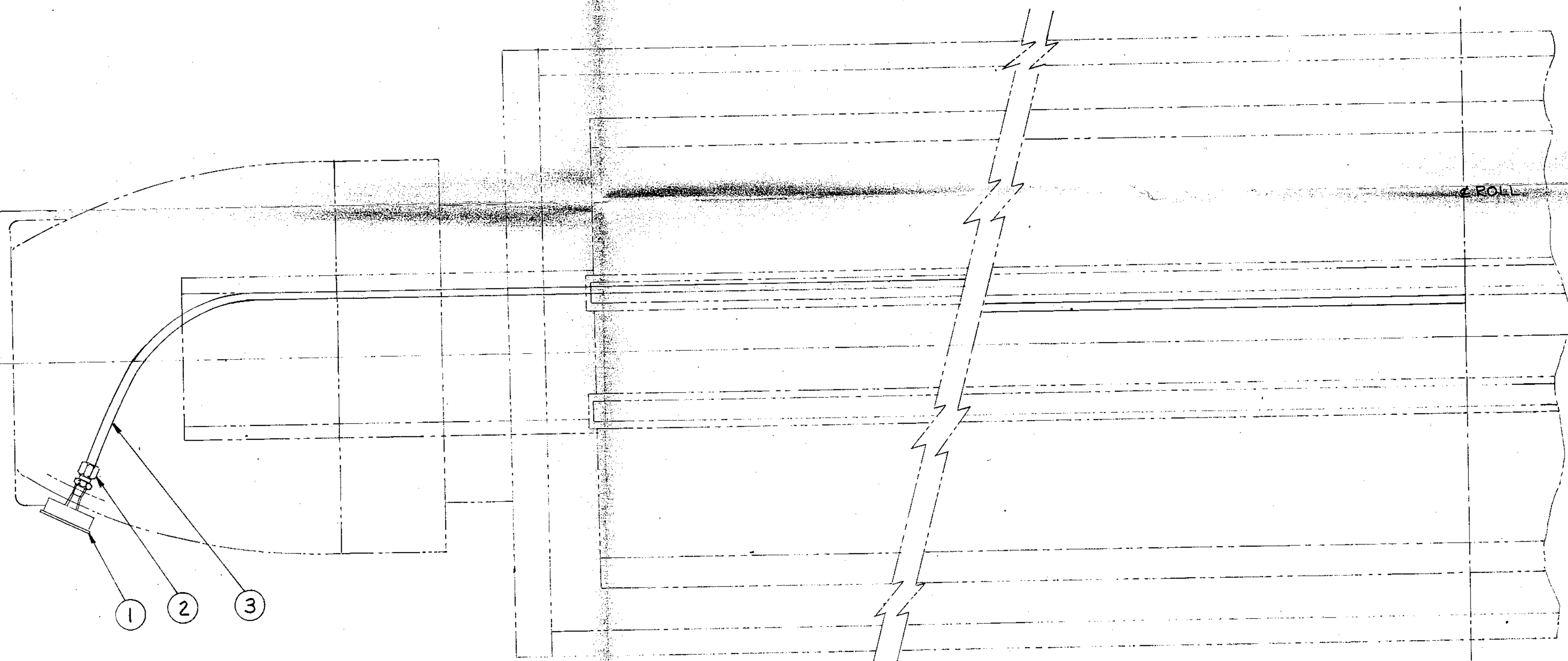


ITEM	QUAN	DESCRIPTION	MATERIAL	SOURCE
1	1	2 1/2" DIAL - 1/4" NPT BACK CONNECTION "MASH" VACUUM GAGE		
2	1	"PARKER" FTG. #6 FBTX (OR EQUIV.)	SEE BILL	
3	SEE BILL	3/8" O.D. TUBING	SEE BILL	



NOTE:  
TUBING TO BE AS SHOWN FOR ROLL WITH CLOCKWISE ROTATION  
TUBING TO BE OPPOSITE FROM SHOWN-INSIDE BOX- FOR ROLL WITH COUNTER-CLOCKWISE ROTATION

ASSEMBLY NOTE:  
DO NOT KINK OR TWIST TUBE.  
MAKE ALL BENDS AS LARGE AS POSSIBLE.  
WELD TUBE CLIPS TO SUCTION BOX & SEALING  
STRIP HOLDERS-AT ASSEMBLY

F. O. No.	ENG. FILE	QTY.	BILL	ISSUED
			1-1	

ITEM # WAS SOFT TEMP COPPER ITEM # WAS BRASS		NO. DATE BY DESCRIPTION		THE MANCHESTER MACHINE CO. MIDDLETOWN, OHIO	
		18 64 19 MAY 61		TITLE: ASS'Y. OF PIPING FOR VACUUM CHECK	
SCALE NONE		EXCEPT WHERE NOTED. TOLERANCES ON DIMENSIONS ARE: FRACTIONAL $\pm 1/64$ DECIMAL $\pm .005$ ANGULAR $\pm 1/2^\circ$			
DATE START 18 MAY 61 DATE FINISH 19 MAY 61		BY J. GRASS APP.		DWG. NO. BC-400-AZ/1	

REDRAWN-17 SEP. 63 J.G.