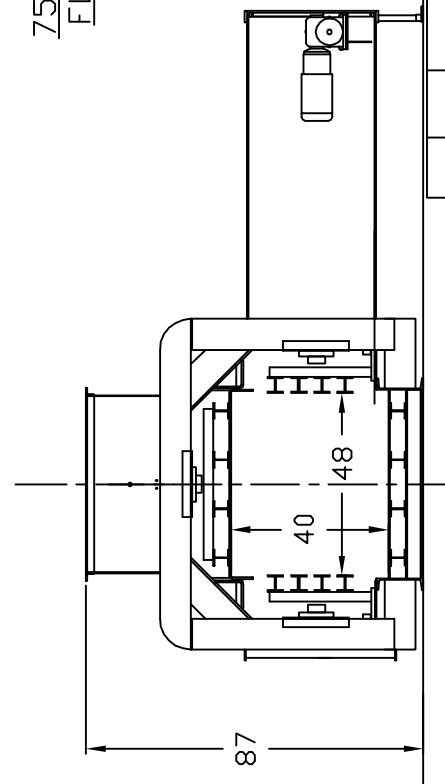
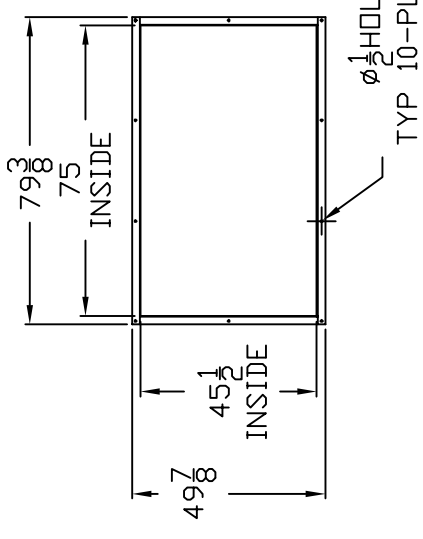
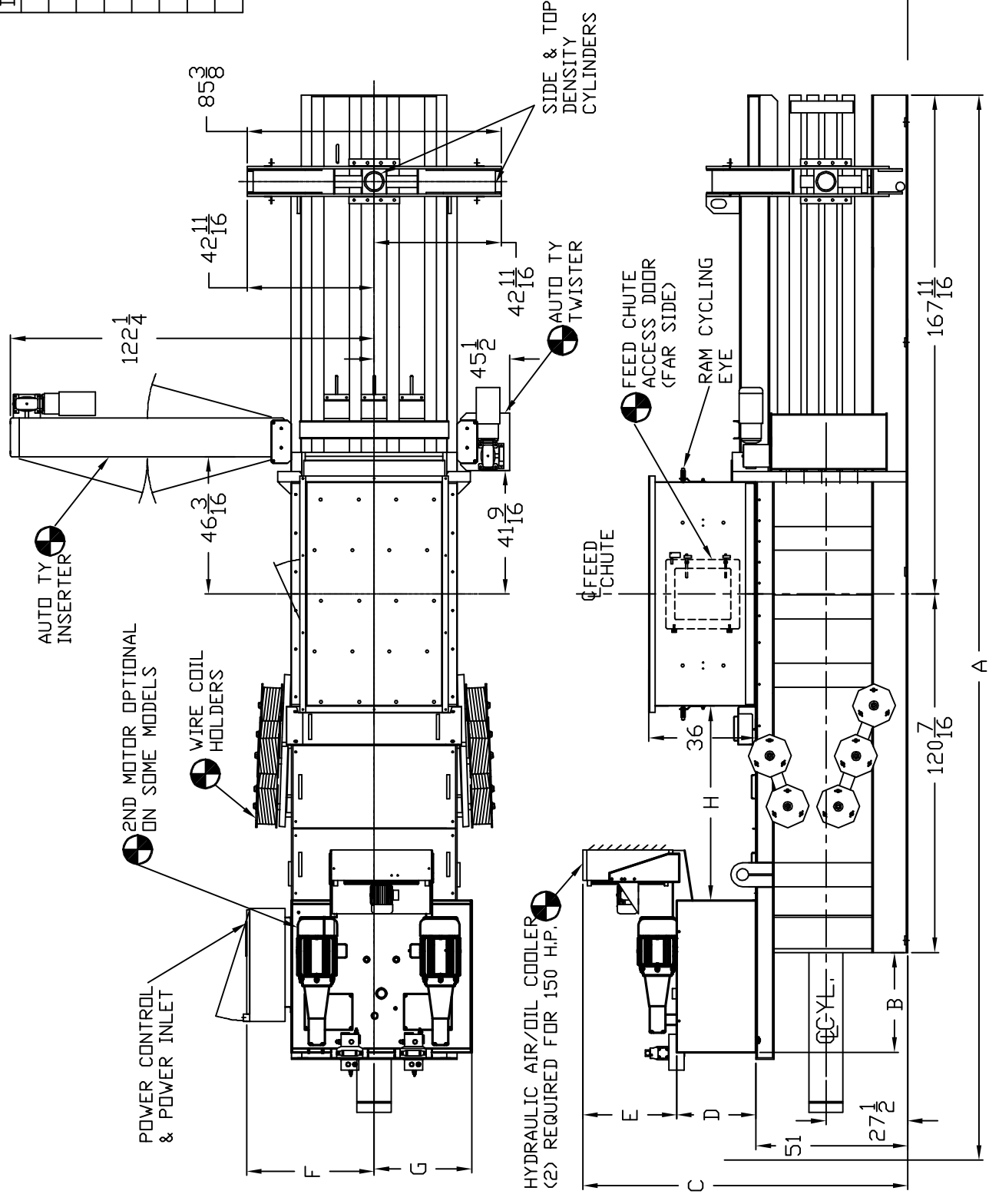


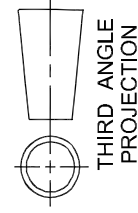
5200								
DIM	25 H.P.	30 H.P.	50 H.P.	50 H.P. (2X25)	60 H.P. (2X30)	75 H.P.	100 H.P. (2X50)	150 H.P. (2X75)
A	342	342	342	342	342	342	376-15/16	376-15/16
B	22-1/2	22-1/2	33-1/2	33-1/2	33-1/2	33-1/2	54-3/4	54-3/4
C	98-5/16	98-5/16	109-3/16	109-3/16	109-3/16	109-3/16	109-1/4	109-1/4
D	20-3/4	20-3/4	26-5/8	26-5/8	26-5/8	26-5/8	22-1/2	22-1/2
E	26-9/16	26-9/16	31-9/16	31-9/16	31-9/16	31-9/16	35-3/4	35-3/4
F	39-7/8	39-7/8	42-7/8	42-7/8	42-7/8	42-7/8	42-7/8	42-7/8
G	23-7/8	23-7/8	32-3/4	32-3/4	32-3/4	32-3/4	45	45
H	65-1/4	65-1/4	65-1/4	65-1/4	65-1/4	65-1/4	65-5/16	65-5/16



OPTIONAL EQUIPMENT SYMBOL

CONFIGURATION
 BALER - STANDARD
 AUTO-TIE - LEFT HAND

TOLERANCES - UNLESS OTHERWISE SPECIFIED:
 FRACTIONAL +/- 1/64
 DECIMAL 0.000 +/- 0.005
 DECIMAL 0.00 +/- 0.01

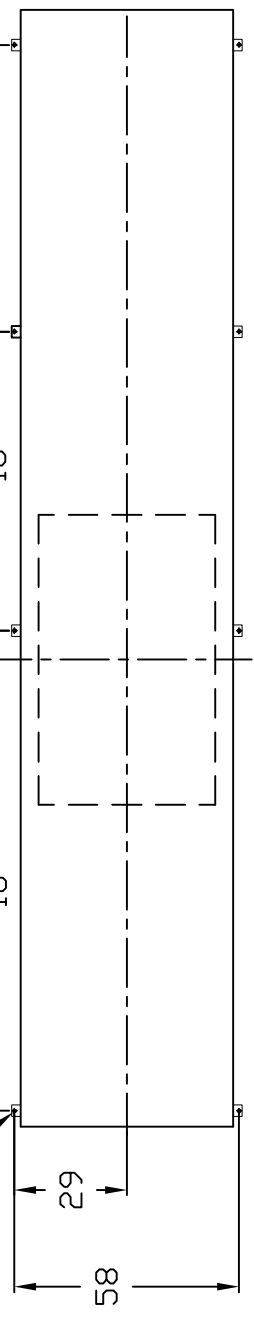


THIS DRAWING IS THE PROPERTY OF EAST CHICAGO MACHINE TOOL CORP.

THE INFORMATION DISCLOSED HEREIN IS NOT TO BE REPRODUCED, COPIED OR OTHERWISE DISPOSED OF, DIRECTLY OR INDIRECTLY, AND IS NOT TO BE USED IN WHOLE OR IN PART TO ASSIST IN MAKING OR TO FURNISH ANY INFORMATION FOR THE MAKING OF DRAWINGS, PRINTS, APPARATUS, OR PARTS THEREOF, EXCEPT AS SPECIFICALLY AUTHORIZED IN WRITING BY EAST CHICAGO MACHINE TOOL CORP.

NO.	DATE	IN.	REMARKS
BALEMASTER® DIV. OF EAST CHICAGO MACHINE TOOL CORP. CROWN POINT, INDIANA			
5200 BALER, 10" CYL W/ 75" FEED CHUTE(S.C)			
DO NOT SCALE		SCALE: 1=50	
B/M REQ'D	YES	NO	
DR.	LLN	CH.	APP.
DATE:	04-22-03	234B0154-02	

1" DIA HOLES FOR 3/4" ANCHOR BOLTS TYP 08-PLACES



5 4 3 2 1 a b c d e f g h