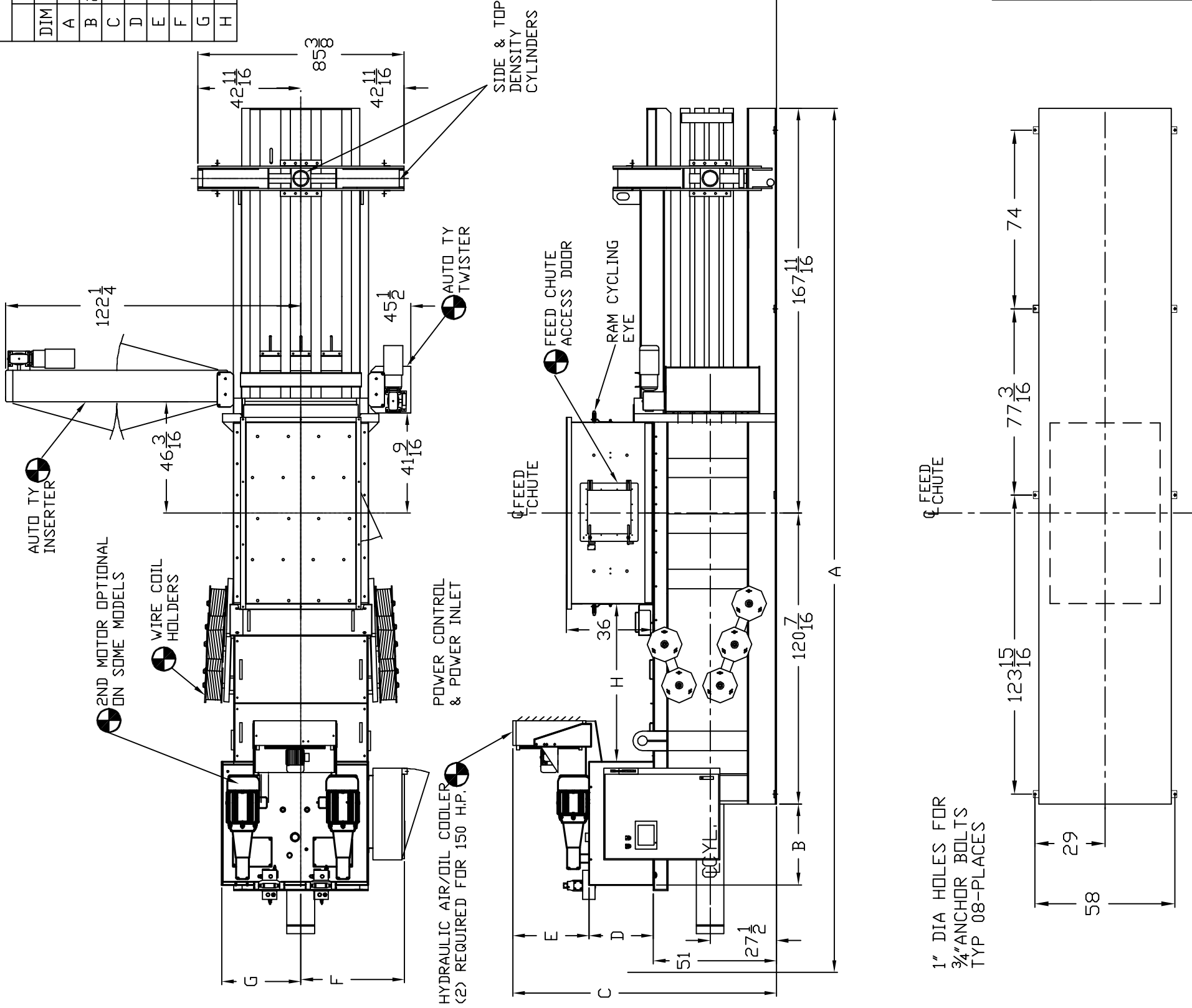
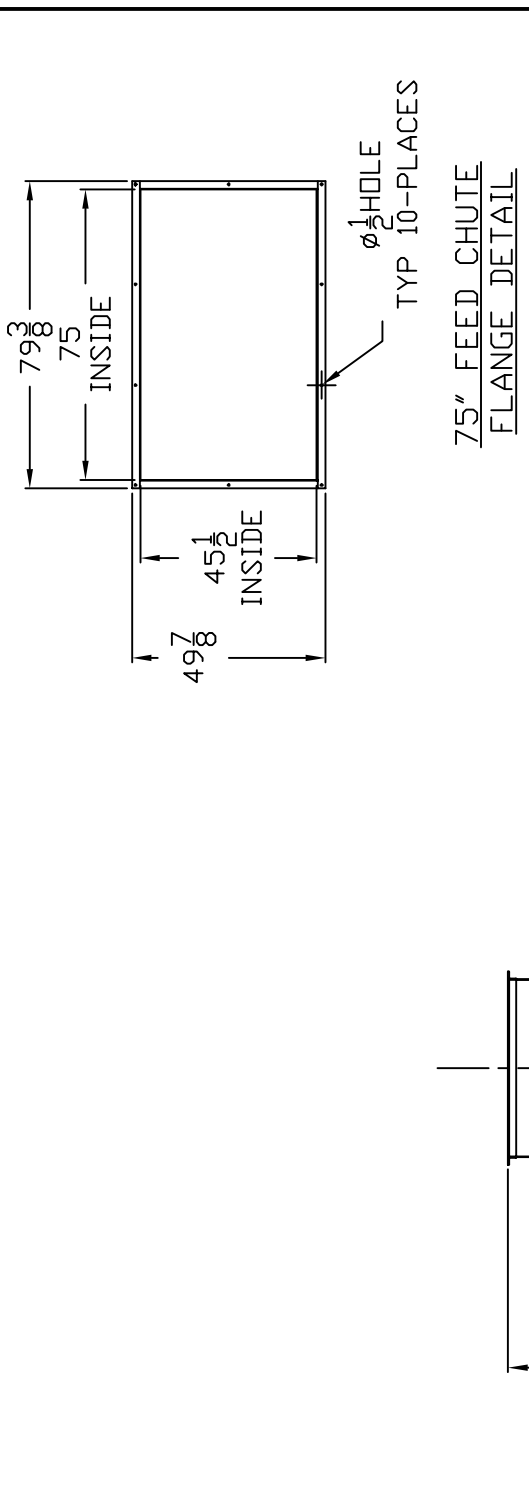


5200								
DIM	25 H.P.	30 H.P.	50 H.P.	50 H.P. (2X25)	60 H.P. (2X30)	75 H.P.	100 H.P. (2X50)	150 H.P. (2X75)
A	342	342	342	342	342	342	376-15/16	376-15/16
B	22-1/2	22-1/2	33-1/2	33-1/2	33-1/2	33-1/2	54-3/4	54-3/4
C	98-5/16	98-5/16	109-3/16	109-3/16	109-3/16	109-3/16	109-1/4	109-1/4
D	20-3/4	20-3/4	26-5/8	26-5/8	26-5/8	26-5/8	22-1/2	22-1/2
E	26-9/16	26-9/16	31-9/16	31-9/16	31-9/16	31-9/16	35-3/4	35-3/4
F	39-7/8	39-7/8	42-7/8	42-7/8	42-7/8	42-7/8	42-7/8	42-7/8
G	23-7/8	23-7/8	32-3/4	32-3/4	32-3/4	32-3/4	45	45
H	65-1/4	65-1/4	65-1/4	65-1/4	65-1/4	65-1/4	65-5/16	65-5/16



NO.	DATE	IN.	REMARKS
BALEMASTER® DIV. OF EAST CHICAGO MACHINE TOOL CORP. CROWN POINT, INDIANA			
5200 BALER, 10" CYL		SCALE: 1=50	
W/ 75" FEED CHUTE(S.C)		DO NOT SCALE WORK TO DIMENSIONS	
B/M REQ'D	YES	NO	
DR.	LLN	CH.	APP.
DATE:	04-22-03	234B0154-03	

CONFIGURATION
 BALER - LEFT HAND
 AUTO-TY - LEFT HAND

TOLERANCES - UNLESS OTHERWISE SPECIFIED:
 FRACTIONAL +/- 1/64
 DECIMAL 0.000 +/- 0.005
 DECIMAL 0.000 +/- 0.01

THIRD ANGLE PROJECTION

THIS DRAWING IS THE PROPERTY OF EAST CHICAGO MACHINE TOOL CORP. OTHER INFORMATION DISCLOSED HEREIN IS NOT TO BE REPRODUCED, COPIED OR OTHERWISE DISPOSED OF, DIRECTLY OR INDIRECTLY, AND IS NOT TO BE USED IN WHOLE OR IN PART TO ASSIST IN MAKING OR TO FURNISH ANY INFORMATION FOR THE MAKING OF DRAWINGS, PRINTS, APPARATUS, OR PARTS THEREOF, EXCEPT AS SPECIFICALLY AUTHORIZED IN WRITING BY EAST CHICAGO MACHINE TOOL CORP.

5 4 3 2 1 a b c d e f g h