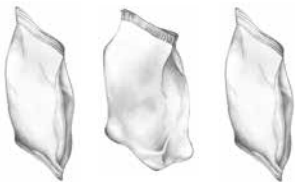


Phaser^{XP}

Vertical, Form, Fill and Seal Machines

Affordable

The Phaser XP Vertical Form, Fill, Seal machine is a low cost, high quality solution to your bagging needs that combines simple operation with high performance. The Phaser XP is ideally suited for short run, medium speed packaging operations and is a great choice for those who would like to economically expand their packaging capacity.



Simple, Reliable

The Phaser XP is the most basic Vertical Form, Fill, and Seal machine available. Yet it delivers outstanding performance. It was engineered specifically for reliably feeding and advancing film, then forming, filling, and sealing bags without complication. Its easy-to-use color touchscreen and ability to save set-up data means minimal training time required. Because the Phaser XP's design is so simple, little or no service is required. In the tradition of Parsons-Eagle's engineering excellence, the Phaser XP features an open construction with a reduced "footprint" and height.

Fast ROI, Long Life

With the Parsons-Eagle Phaser XP, expect durability, minimal downtime, increased productivity, and greater profits.



Parsons-EAGLE
PACKAGING SYSTEMS

A Division of Campbell Wrapper Corporation



*baked
goods*



coffee

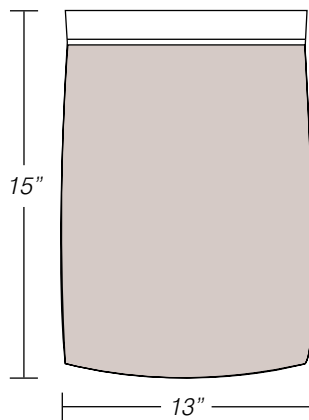


snacks

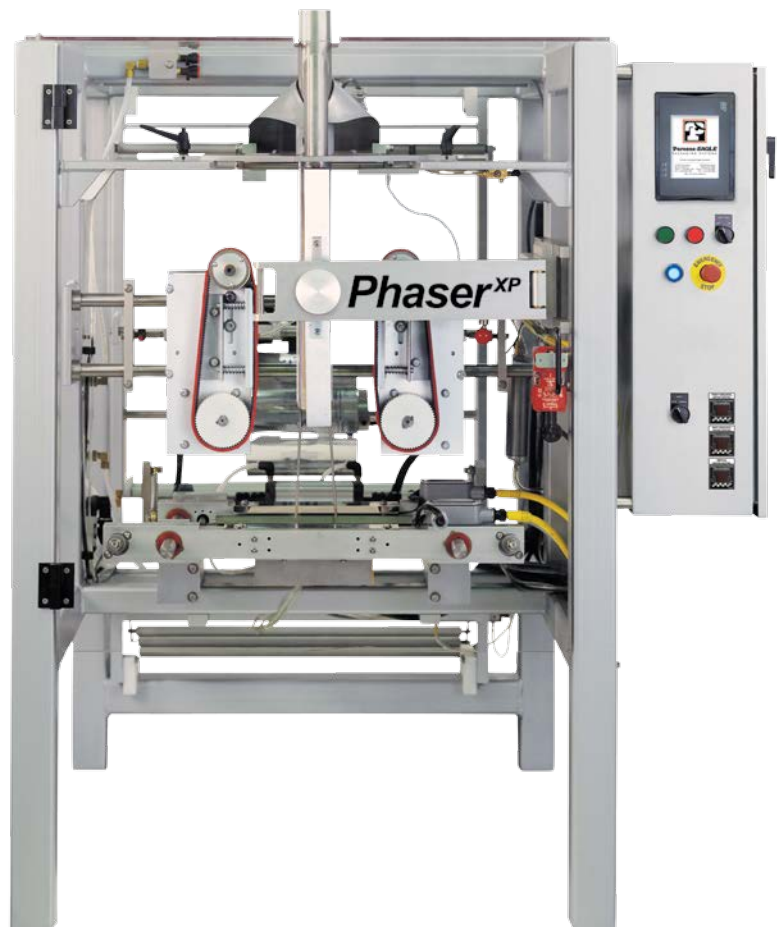
Phaser^{XP}

Outstanding Performance and Features in an Entry-Level Bagger

It's the low-cost option from a source with over 90 years of experience delivering dependable packaging machinery and systems.



maximum size





confectionary



dairy



User-friendly operator interface



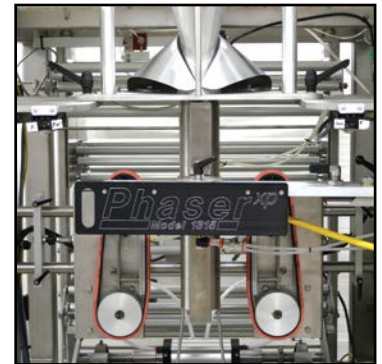
Automatic film tracking

Features

- Vertical unwind dancer with E-Z thread roller design for quick and simple machine threading.
- Color touchscreen operator interface with recipe storage, diagnostics and simplified electronic print registration phasing.
- Bag width capabilities from 2 inches to 13 inches, and bag lengths from 3 inches to 15 inches.
- Rugged, self aligning vertical seal bar that can be manually actuated for easier forming tube threading.
- Pneumatics valves and solenoids with LED indicators and IP65 wash down component ratings.
- Automatic motorized film tracking to center the film carriage and keep the machine running without operator attention.
- An encoder is mounted at the forming shoulder guaranteeing bag length repeatability on every package.
- Forming sets are mounted to the machine with two simple locking handles, for quick removal and changeover.



Inside control panel



Pull belt and vertical seal



Forming set



Film pull encoder

Specifications

Machine Size	
Width	51 in.
Depth	58 in.
Height	67 in. ±1 in. (to top of former)
Machine Weight Approx.	1,000 lbs.
Package Size Range	
Width	2 in. to 13 in.
Length	3 in. to 15 in.
Film Rolls	
Max. Film Width	27 in.
Max. Roll Diameter	14 in.
Film Reel Core ID	3 in.
Power Consumption	240V, 50/60 Hz, 3Ph, 20Amps
Air Consumption	12 SCFM @ 80 PSI at 60 bags (May vary according to selected options and sealing system)
Production Speed	Up to 60 bags per minute
Frame Finish	Brushed stainless steel
Filler Interfacing	
Auger fillers	Combination weighers
Net weigh scales	Volumetric cup fillers

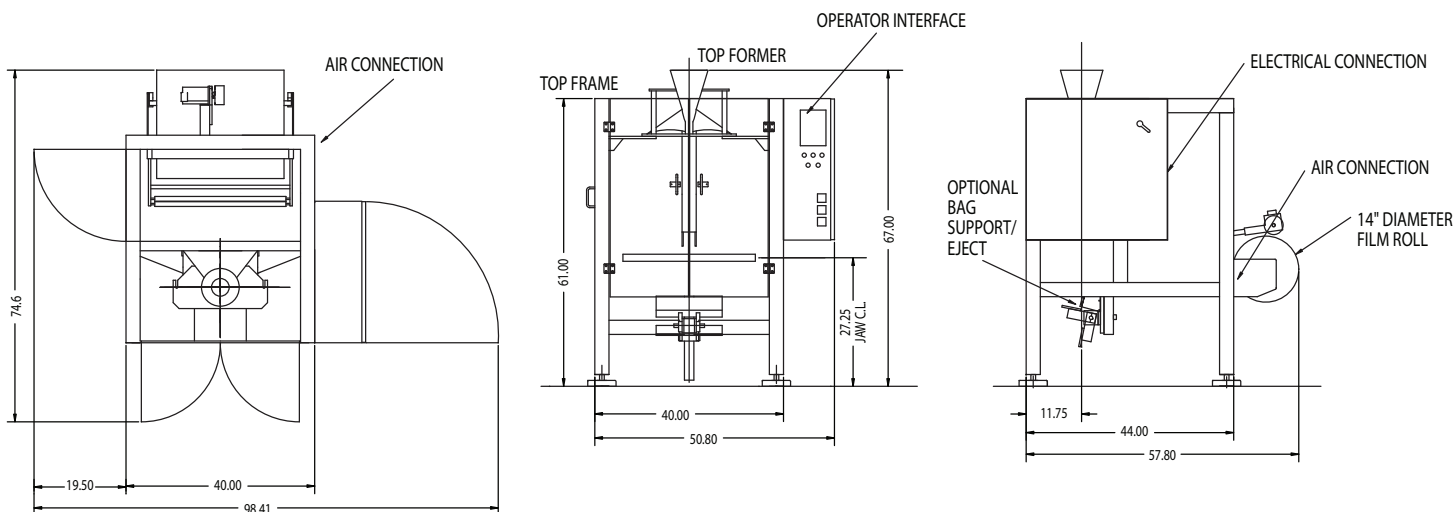
Standard Features

- PLC-based controls
- Logical, easy-to-understand operator interface with diagnostic messages
- 40 recipe set-up memory
- Discreet temperature controllers on vertical and horizontal seals
- Encoder system ensures optimal repeatability in bag length and film advance
- Positive film advance with reinforced polyurethane belts
- Spring-loaded pull-belt pressure control
- Rugged, self-aligning vertical seal bar
- Safety interlock switches on all guarding
- Pneumatics valves and solenoids with LED indicators and IP65 wash down component ratings
- Automatic motorized film tracking for consistent package seals
- Rugged, open, low-profile design
- Easily interfaces with all types of filling systems
- Bag lengths to 15 in. and longer with double pull feature
- Stainless Steel construction
- Cushioned bag deflators

Options

- Poly-resistance seal jaw with serrated knife cut-off
- Mechanical and hot hole punch (hot hole punch for resistance films only)
- Tear notch
- Side gusset attachment
- Easy to use photo eye for printed films
- Bag support plate with eject
- Gas flush provision with controls
- Code daters with mounting brackets
- Static eliminator bars and rings
- Coffee valve applicator
- Integrated auger controls
- Bag counting software
- Case counter with remote display
- Flavor injection for coffee bags
- Ultra low profile frame
- Flat bottom bag

Phaser^{XP} Mechanical Dimensions



Parsons-EAGLE
PACKAGING SYSTEMS

A Division of Campbell Wrapper Corporation

1415 Fortune Avenue, De Pere, WI 54115
Phone: (920) 983-7100, Fax: (920) 983-7300

Web: www.parsons-eagle.com
E-mail: pesales@parsons-eagle.com