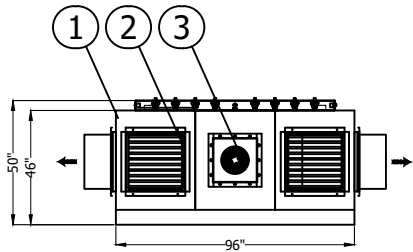
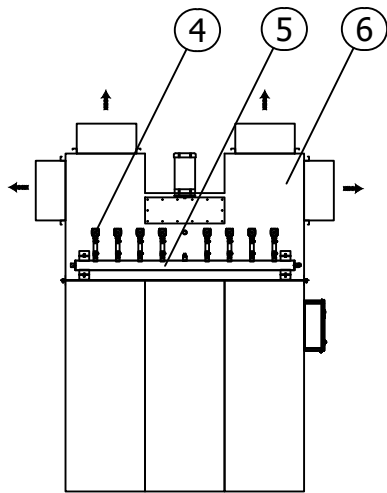


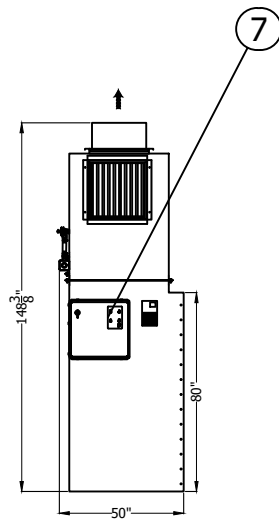
ITEM	QTY.	PART NUMBER	DESCRIPTION (ALL QUANTITIES PER COLLECTOR)
1	ONE		SLIM LINE RECLAIM CARTRIDGE POWDER COLLECTOR 8,000CFM CARTRIDGE FILTERS QTY. (8) FINAL FILTERS QTY. (4)
2	4		FINAL EXHAUST FILTER, 24" X 24" X 12" QTY. (4)
3	ONE		FAN & MOTOR 16 1/2" WHEEL & CONE 10 HP C-FACE TEFC MOTOR (460V/3PH/60HZ) MOTOR WITH VFD 8,000 CFM @ 3" S.P.
4	8		PULSE VALVE QTY. (8) FACTORY SET FOR 120 SECOND INTERVALS 1/10 SECOND DURATION
5			AIR REQUIREMENTS: 10 SCFM@50-80 PSI CLEAN, DRY AIR
6	2		BACK FILTER MOUNT LOCATION REPLACED WITH SOLID PANEL
7	ONE		CONTROL PANEL & VFD
8	ONE		CABINET - WELDED CONSTRUCTION FINAL FILTER MODULE, RETURN DUCT & COLLECTOR HOUSING PANELS 14 GA. MILD STEEL OVER WELDED TUBULAR FRAME POWDER COATED WHITE
9	3		POWDER COLLECTION DRAWER
10	8		CARTRIDGE FILTERS QTY. (8) 12 3/4"Ø X 52"



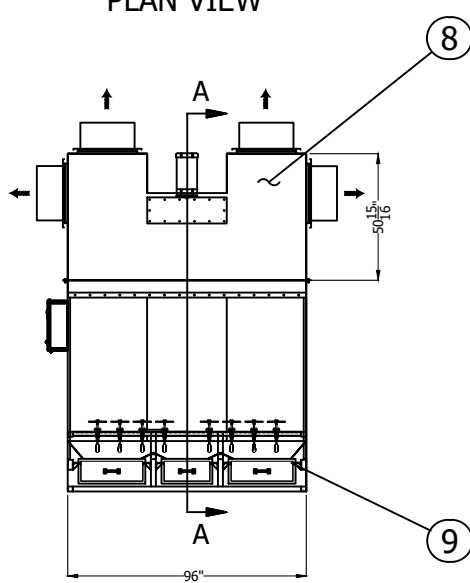
PLAN VIEW



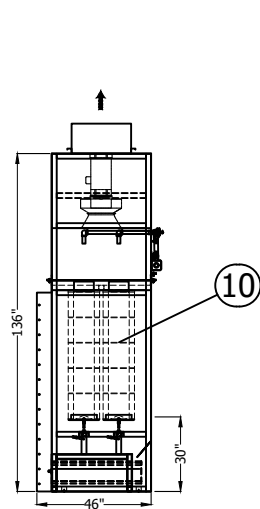
REAR VIEW



LEFT ELEVATION



FRONT ELEVATION



SECTION A-A

ADDITIONAL DUCTWORK SUPPORT TO SUIT FIELD CONDITIONS TO BE SUPPLIED BY OTHERS.
ALL ANCHOR BOLTS TO BE SUPPLIED BY OTHERS.

COL-MET SPRAY BOOTHS ARE MANUFACTURED IN ACCORDANCE WITH NFPA-33.
BOOTH WALLS & CEILING PANELS FABRICATED OF 18 GA. GALVANIZED STEEL IN ACCORDANCE WITH NFPA-33 CHAPTER 5.1.4.
SEE ORDER ACKNOWLEDGEMENT FOR COMPLETE LIST OF PROVIDED STACK, AND OPTIONAL COMPONENTS.

IMPORTANT NOTICE:
IN THE CONSTRUCTION OF THIS BOOTH THERE MAY BE POSSIBLE FIELD MODIFICATIONS BY THE INSTALLER. THESE MODIFICATIONS MAY INCLUDE, BUT ARE NOT LIMITED TO:

- WELDING
- CUTTING
- NOTCHING
- DRILLING

GENERAL NOTES:

1. WORK CHAMBER WILL BE BOLTED CONSTRUCTION WITH 5/16" BOLTS ON STANDARD 6" CENTERS
2. WORK CHAMBER TO BE 18 GA. GALVANIZED UNPAINTED SHEET METAL EXCEPT AS NOTED.
3. ALL MOTOR CONTROLS, SWITCHES, LIGHT LAMPS OR TUBES, INCLUDING CONNECTIONS TO EQUIPMENT TO BE FURNISHED AND INSTALLED BY CUSTOMER EXCEPT AS NOTED.
4. AMPLE AIR MAKE-UP AND AIR SPACE WITHIN FRONT OF BOOTH MUST BE PROVIDED IN ORDER TO INSURE PROPER OPERATION OF BOOTH.
5. ALL LOCAL, CITY, & STATE PERMITS AND INSURANCE APPROVAL TO BE OBTAINED BY CUSTOMER.
6. CUSTOMER TO FURNISH ROOF PITCH, STACK QUANTITY AND CONFIGURATION IF REQUIRED.

For information on installation of the booth and components, please see our web site at www.colmetbs.com, click on "Resources" on the left side of the page, and then click on "Install Manual".

POWDER COAT WHITE

CONFIDENTIAL PROPRIETARY NOTICE THIS DRAWING, THESE SPECIFICATIONS, AND THE IDEAS CONTAINED HEREIN ARE THE EXCLUSIVE PROPERTY OF COL-MET SPRAY BOOTHS. THEY SHALL BE RETURNED UPON DEMAND. NO PERSON SHALL COPY, USE, OR DISCLOSE THIS DRAWING, THESE SPECIFICATIONS, OR THE IDEAS CONTAINED HEREIN WITHOUT THE EXPRESS CONSENT OF COL-MET SPRAY BOOTHS. IT IS THE RESPONSIBILITY OF THE RECIPIENT TO CHECK ALL DETAIL INFORMATION AGAINST THE CONTRACT DOCUMENTATION. COL-MET SPRAY BOOTHS ACCEPTS NO LIABILITY OR RESPONSIBILITY FOR ANY LOSS OR DAMAGE, SUFFERED AS A RESULT OF (OR CONNECTED WITH) THE USE OR MISUSE OF THE CAD DATA SUPPLIED FOR INFORMATION ONLY. ONCE THE DATA IS INTRODUCED INTO YOUR OWN CAD OR OTHER SYSTEM, COL-MET SPRAY BOOTHS CAN TAKE NO RESPONSIBILITY FOR ITS ACCURACY.		COL-MET spray booths		COL-MET SPRAY BOOTHS 1635 INNOVATION DR. ROCKWALL, TEXAS 75082 PHONE (972) 772-1919 FAX (972) 772-1833 WWW.COLMETSB.COM						
FOR #	42032	TITLE	EZ-RPC-8000 SLIM COLLECTOR							
APPROVAL BY	STM	PRODUCTION								
DATE	02/10/12	PRO USER								
DETAILS BY	OT	CUSTOMER NO.	244638	FILE NAME	4202-rpc-8000-075-8000-dm-collecting.dwg					
DATE	4/17/12	REV.								
DRAWN BY	02/09/12	CS/B	SCALE	NTS	SIZE	11x17	REVISIONS	JOB #	SHEET	2 OF 2