



Operation and Maintenance Manual

Flushing Device

Edition 12 / 2021

Flushing device

T6600.GM47 - T6600.SP5 -
T6600.GM1030P - T6600.GM5000
- T6600.GM5000-FM



Table of Contents

1	INFORMATION ON THIS MANUAL	5
1.1	Information	5
1.2	Warnings, cautions and symbols used in these instructions	5
2	GENERAL SAFETY STANDARDS	6
2.1	Safety warnings for the user	6
2.1.1	Electrical equipment	6
2.1.2	Personnel qualification	6
2.1.3	Workplace safety	7
2.2	Safety standards for personnel	7
2.2.1	Safe use of Wagner spraying equipment	8
2.2.2	Earthing of the apparatus	8
2.2.3	Material flexible hoses	9
2.2.4	Cleaning and washing	10
2.2.5	Handling hazardous liquids and paints	10
2.2.6	Contact with high temperature surfaces	11
2.2.7	Maintenance and repair	11
2.2.8	Protection and monitoring devices	11
3	PRODUCT LIABILITY AND WARRANTY	12
3.1	Warning on product liability	12
3.2	Warranty liability	12
3.3	CE Declaration of conformity	13
4	DESCRIPTION	14
4.1	Description of operation	14
4.2	Technical specifications	14
5	STRUCTURE OF THE APPARATUS	16
5.1	Apparatus structure description	16
6	PREPARATION FOR START-UP	17
6.1	Device installation site	17
6.2	Wall mounting	17
6.3	Earthing	18
7	START-UP AND USE	19
7.1	Procedure	19
8	TROUBLESHOOTING	21
9	MAINTENANCE AND REPAIR	21
10	DISPOSAL	22
11	ACCESSORIES	22

Table of Contents

12	REPLACEMENT PARTS	24
12.1	How to order replacement parts?	24
12.2	Flushing device (complete view)	25
12.3	Flushing device (empty)	26
12.4	Flushing device (pneumatic drive)	28
12.5	Flushing device (gun locking unit)	30
12.5.1	Flushing device (GM4700)	30
12.5.2	Flushing device (SP5)	32
12.5.3	Flushing device (GM1030P)	34
12.5.4	Flushing device (GM5000 CE – GM5000 EAC-FM)	36
12.6	Flushing device (gun tightening unit)	38
13	PNEUMATIC DIAGRAM	40
13.1	Flushing device pneumatic diagram	40
13.2	Control panel pneumatic diagram	41

1 INFORMATION ON THIS MANUAL

1.1 INFORMATION

The instructions for use contain information and instructions for the use, repair and maintenance of the apparatus.


→ Use the apparatus in compliance with these instructions.

1.2 WARNINGS, CAUTIONS AND SYMBOLS USED IN THESE INSTRUCTIONS


The warnings in these instructions warn of particular dangers for the user and for the apparatus and describe measures to prevent these dangers.

The warnings are classified as follows:


Danger - imminent danger. Failure to observe will result in death, serious injury and substantial material damage.

 SIHL_0100_I	<div style="background-color: black; color: white; text-align: center; padding: 5px;">⚠ DANGER</div> <p>Here there is a warning of danger! Here there are possible consequences if the warning is not heeded. The term indicates the level of danger.</p> <p>→ Here are the measures to adopt to prevent the danger and its consequences.</p>
--	--

Warning - possible imminent danger. Failure to observe could result in death, serious injury and substantial material damage.

 SIHL_0103_I	<div style="text-align: center; padding: 5px;">⚠ WARNING</div> <p>Here there is a warning of danger! Here there are possible consequences if the warning is not heeded. The term indicates the level of danger.</p> <p>→ Here are the measures to adopt to prevent the danger and its consequences.</p>
--	--

Caution - possible dangerous situation. Failure to observe could result in slight injuries.

 SIHL_0101_I	<div style="text-align: center; padding: 5px;">⚠ CAUTION</div> <p>Here there is a warning of danger! Here there are possible consequences if the warning is not heeded. The term indicates the level of danger.</p> <p>→ Here are the measures to adopt to prevent the danger and its consequences.</p>
--	--

Caution - possible dangerous situation. Failure to observe could result in material damage.

SIHL0102J	<div style="text-align: center; padding: 5px;">CAUTION</div> <p>Here there is a warning of danger! Here there are possible consequences if the warning is not heeded. The term indicates the level of danger.</p> <p>→ Here are the measures to adopt to prevent the danger and its consequences.</p>
-----------	--

Warning - information on peculiarities and procedures to adopt.

2 GENERAL SAFETY STANDARDS

2.1 SAFETY WARNINGS FOR THE USER

- Always keep these instructions handy on the site where the apparatus is used.
- In any circumstances, observe local safety in the workplace directives and injury prevention standards.



2.1.1 ELECTRICAL EQUIPMENT

Electrical devices and equipment:

- Ensure that the operating safety requirements are met, including the type of operation and the local environmental influences.
- Allow only qualified electricians or personnel under their supervision to make repairs. Ensure that the equipment is operated in observance of safety standards and electrotechnical rules.
- In the event of defects, have repairs made immediately.
- Ensure that the equipment is placed out of service if danger stems from it.
- Disconnect voltage before working on live parts. Inform personnel of foreseen work. Observe electrical safety rules.
- Earth all the equipment in a common point.
- Keep liquids far from electrical equipment.



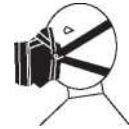
2.1.2 PERSONNEL QUALIFICATION

- Ensure that the apparatus is operated and repaired only by trained personnel.

2.1.3 WORKPLACE SAFETY

Danger due to liquids or hazardous vapours!

- Ensure that the floor in the work area is anti-static in compliance with EN 61340-4-1 (resistance must not exceed 100 MΩ).
- Ensure that all personnel in the work area wear anti-static shoes, e.g. shoes with leather soles. Covering of the device's feet must comply with EN20344. The measured insulation value must not exceed 100 MΩ.
- Ensure that, during spraying, personnel wear anti-static shoes and dissipative gloves. Earthing is achieved through the grip or trigger of the gun.
- Provide paint fog suction devices in compliance with local standards.
- Ensure that the following safe workplace components are available:
 - Material/pneumatic flexible hoses suitable for the operating pressure
 - Personal protection equipment (respiratory system and skin protection)
- Ensure that there are no heat sources in the environment such as open flames, incandescent wires or high-temperature surfaces. Do not smoke
- Protective clothing, including gloves, must be in compliance with the specifications of the EN 1149-5 standard. The measured insulation value must not exceed 100 MΩ.
- Ensure the permanent technical seal of the fittings for the tubing, the flexible hoses, the accessories and connections:
 - Periodic preventive maintenance and repairs (replacement of flexible hoses, checking the resistance of the connection fastenings, etc.)
 - Regular monitoring by means of visual and olfactory inspection for leaks and defects, for example daily, prior to start-up or at the end of work
- Ensure that the maintenance and safety checks are carried out regularly.
- In the event of defects, immediately stop and repair the apparatus or system.



2.2 SAFETY STANDARDS FOR PERSONNEL

- Always observe the information in these instructions, specifically the general safety standards and the warnings.
- In any circumstances, observe local safety in the workplace directives and injury prevention standards.
- In the event of electrostatic use: those who belong to the group of workers at risk in accordance with directive EMF 2013/35/UE (for example, wearers of active implantable devices) must not stop in the area where there is a high-voltage field.



2.2.1 SAFE USE OF WAGNER SPRAYING EQUIPMENT

Danger due to the injection of paint or detergent on the skin!

The jet of material is under pressure and can cause dangerous injuries.

Prevent the injection of paint and detergents:

- Never aim the spray gun at people.
- Never place your hands in the trajectory of the material spray
- Before any work on the apparatus, before stopping work and in the event of operating anomalies:
 - Remove the compressed air supply power
 - Protect the spray gun from start-up
 - Depressurise the spray gun and the apparatus
 - Operating anomalies: if possible, eliminate the anomaly as described in the "Troubleshooting" section, otherwise contact an authorised service centre

In the event of skin injury caused by paints or detergents:

- Make a note of the type of paint or detergent used
- See a doctor immediately

Danger of injuries due to recoil

- Keep your balance as you press the spray gun trigger
- Keep the spray gun in one position only for a short time



2.2.2 EARTHING OF THE APPARATUS

Danger due to electrostatic discharge!

Due to the high flow rate speed of the paints during high-pressure spraying, in particular circumstances, electrostatic charges can build up on the apparatus and especially on the spray gun. In the discharge phase, these charges can cause sparks or flames to form.

- Ensure that the apparatus is electrically earthed during every spraying operation.
- Connect the pieces being painted to earth.
- Ensure that everyone in the work area is connected to earth, for example through the use of anti-static shoes.
- During spraying operations, wear anti-static shoes for earthing through the spray gun grip. If gloves are worn, they must be anti-static.



2.2.3 MATERIAL FLEXIBLE HOSES

Danger due to rupture of the product flexible hose!

- Ensure that the flexible hose material is chemically stable with the materials sprayed.
- Check to ensure that the material flexible hose is suitable for the pressure generated in the apparatus.
- Check to ensure that the following information is recognisable on the high pressure flexible hose used:
 - Manufacturer
 - Maximum operating pressure
 - Production date.
- The electrical resistance of the entire high pressure flexible hose must be lower than 1 Megohm.
- Ensure that the flexible hoses are placed only in suitable locations. Never place flexible hoses:
 - In areas with high traffic and passing vehicles
 - On sharp edges
 - On moving parts
 - On high temperature surfaces
- Ensure that the flexible hoses are never bent. Maintain the maximum curvature radii.
- Ensure that work never continues with a damaged flexible hose.



Some liquids have a high expansion coefficient. In some cases, the volume may increase and damage tubing, screw connections, etc. and also result in the liquid leaking. If the pump aspirates the liquid from a closed tank: ensure that the air or a suitable gas can get to the tank. This way negative pressure is prevented.

This could cause the tank to implode (crush) and rupture.

The tank would have leaks and the liquid would come out. The pressure generated through the pump is a multiple of the intake air pressure.

2.2.4 CLEANING AND WASHING

Danger due to cleaning and washing!

Danger of explosion and damage to the apparatus!

- Prefer non-flammable cleansers and detergents.
- In the event of cleaning operations with flammable detergents, ensure that all the operating and auxiliary means (e.g. collection recipients, hoppers, transport carriages) are dissipative or conductive and earthed.
- Follow the paint manufacturer's indications.
- Ensure that the flashpoint of the detergents is at least 15K higher than the ambient temperature or that the cleaning operations are carried out in a special location with technical ventilation.
- Never use chlorinated or halogenated solvents (like trichloroethane and methylene chloride) with apparatus that contain aluminium or galvanised parts. Due to a chemical reaction, a risk of explosion could occur.
- Adopt occupational safety measures.
- Bear in mind that, upon start-up or during emptying of the apparatus:
 - Depending on the coating product used,
 - Depending on the cleanser (solvent) used,there may be a flammable mixture inside the tubing and the components.
- For cleansers and detergents, only electroconductive tanks must be used.
- The tanks must be earthed.
- In closed tanks in which an explosive mixture of gas and air forms.
- To wash the apparatus with solvents, never spray in a closed tank.

External cleaning

- For the external cleaning of the apparatus or parts of it, also observe the following:
- Depressurise the apparatus.
- Disconnect the apparatus' electrical voltage.
- Disconnect the pneumatic air supply line.
- Use only damp cloths and brushes. Never under any circumstances use abrasive means or hard objects, nor spray detergents with the spray gun. Cleaning must never damage the apparatus in any way.
- None of the electrical components must be cleaned with solvents or be submerged.

2.2.5 HANDLING HAZARDOUS LIQUIDS AND PAINTS

- For the preparation and processing of the paint and to clean the apparatus, observe the processing standards of the relevant paint, solvent and detergent manufacturers.
- Implement the prescribed protective measures; in particular, use protective eyewear, safety clothing and safety shoes and, if necessary, a protective cream on the skin.
- Use a respiratory mask or a self-contained breathing apparatus.
- To adequately protect your health and the environment: use the apparatus in a spraying booth or on a spraying wall with ventilation (exhaust) switched on.
- To process materials at high temperature, wear suitable protective clothing.



2.2.6 CONTACT WITH HIGH TEMPERATURE SURFACES

Danger due to extremely hot surfaces due to high-temperature coating products!

Danger of injuries due to burning!

- Touch the high-temperature surfaces only with protective gloves.
- For operation of the apparatus with coating material at temperatures >43°C/
109.4°F:



Ord. No.

- 9998910 Warning sticker
- 9998911 Protection sticker

Txt_00018_J

2.2.7 MAINTENANCE AND REPAIRS

Danger of injuries due to incorrect maintenance and repairs!

Danger of death and damage to the apparatus!

- Repairs to and replacement of components must be carried out only by a WAGNER service centre or specially trained personnel
- Use only original WAGNER replacement parts and accessories.
- Do not modify or transform the apparatus. If a modification is necessary, please contact WAGNER.
- Repair and replace only the components indicated in sections 7 and 8 and assigned to the apparatus.
- Do not use defective components.
- Use only the accessories indicated in section 7 and assigned to the apparatus.
- Before any work on the apparatus and in the event of interruptions of work:
 - Depressurise the spray gun, the high-pressure flexible hoses and the apparatus.
 - Deactivate electrical power and the compressed air supply.
 - Separate the network control device.
- For any work, follow the operating and service instructions.



2.2.8 PROTECTION AND MONITORING DEVICES

Danger in the event of removal of the protection and monitoring devices
Danger of death and damage to the apparatus!

- The protection and monitoring devices must not be removed, modified or disabled.
- Periodically check to ensure correct operation.
- In the event of defects to the protection and monitoring devices, the system cannot be started until these defects have been eliminated.



3 PRODUCT LIABILITY AND WARRANTY

3.1 WARNING ON PRODUCT LIABILITY

In compliance with the EC decree valid from 01/01/1990, the manufacturer will be liable for the product only if the components of the product have been supplied or expressly authorised by the manufacturer or if the apparatus is mounted and used appropriately. In the event of the use of accessories and replacement parts from other manufacturers, product liability may lapse entirely or in part.

With the use of WAGNER accessories and replacement parts, you have the guarantee that all the safety standards are fully observed.

3.2 WARRANTY LIABILITY

The factory warranty on this apparatus is granted as follows:

All parts that are found to be unserviceable or of significantly reduced suitability due to circumstances that occurred prior to delivery, in particular due to defects in the model, the materials used or the version of the apparatus within 36 months (one-shift operation), 18 months (two-shift operation) or 9 months (three-shift operation) from the delivery date to the purchaser will be, at our discretion, repaired or replaced free of charge to the purchaser.

The warranty anticipates replacement of the apparatus or repair of its individual parts at our indisputable discretion. The necessary costs, particularly for transport, labour and materials, are at our expense, except for those expenses that undergo an increase due to the movement of the apparatus to a place different than the buyer's place of residence.

We will not be held liable for damage caused directly or indirectly by the following things: unsuitable or non-regulatory use, installation or start-up errors by the buyer or third parties, natural wear and tear, improper handling and maintenance, use of unsuitable coating materials, substitute materials and influences of a chemical, electrochemical and electrical nature, unless the damages can be attributable to our negligence.

Abrasive coating materials, for example minium, dispersions, enamels, liquid abrasives, zinc powder paints and similar reduce the life of valves, gaskets, spray guns, nozzles, cylinders, pistons, etc. Phenomena of wear attributable to the above will not be covered under warranty. Components not manufactured by Wagner are subject to the original manufacturer's warranty. Replacement of a component does not extend the warranty period of the apparatus. The apparatus must be inspected immediately after delivery.

To prevent losing the warranty, clear defects must be communicated in writing to the supplying company or to us within 14 days of the delivery date of the apparatus.

We reserve the right to fulfil the warranty using an authorised company.

The services envisaged by this warranty will be provided only after presentation of proof of purchase (invoice or delivery bill). Should the check find that the damage is not covered under warranty, the expense of the repair shall be borne by the buyer.

We hereby explicitly caution that this statement of warranty does not constitute any limitation of legal rights or the rights specified in our general sales terms and conditions.

3.3 CE DECLARATION OF CONFORMITY

We hereby declare that the model of:
Pneumatic pumps and spraypacks with item No.:

T6600.GM47	T6600.SP5	T6600.GM1030P	T6600.GM5000	T6600.GM5000-FM
------------	-----------	---------------	--------------	-----------------

Conforms to the following pertinent provisions
2006/42/CE

Applied standards, in particular:

UNI EN ISO 12100-1	UNI EN 809: 1998+A1:2009+AC:2010	EN ISO 4413:2012
EN ISO 4414:2012	EN ISO 13732-1:2008	EN 14462:2015
EN 12621:2006+A1:2010	EN 1127-1:2011	

Marking:



Declaration of EC Conformity

A specific declaration of conformity is attached to this product with related certificate. If the aforementioned declaration is required, it can be ordered from the local WAGNER representative, indicating the type of product and the serial number.

4 DESCRIPTION

4.1 DESCRIPTION OF OPERATION

The gun flushing device allows the automatic flushing and loading cycle of the manual spray gun to be carried out. The command to the device is sent from the electronic mixer, therefore the manual gun can be flushed following a flush request by the operator or automatically at the end of the POT-LIFE time, as long as the gun has been placed in the device and its cover correctly closed.

During the colour change, if the gun has been appropriately placed in the device, the tubing and the nozzle are flushed and then filled with the new mixed product.

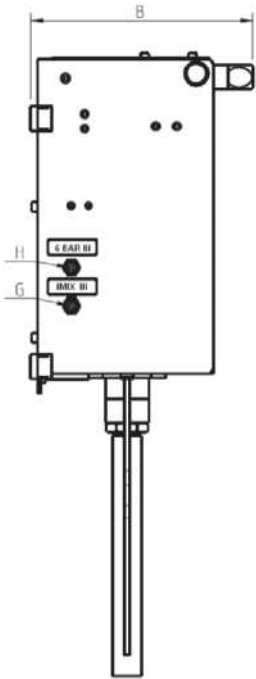
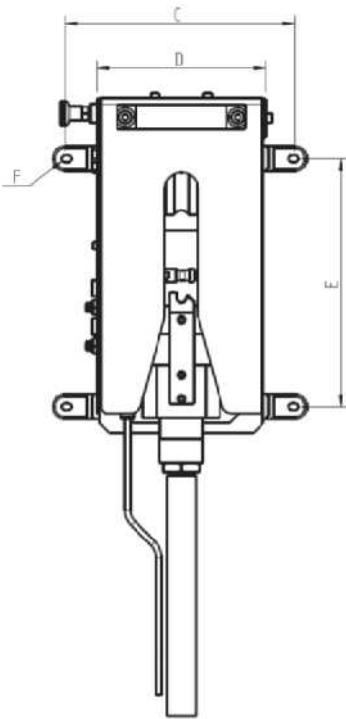
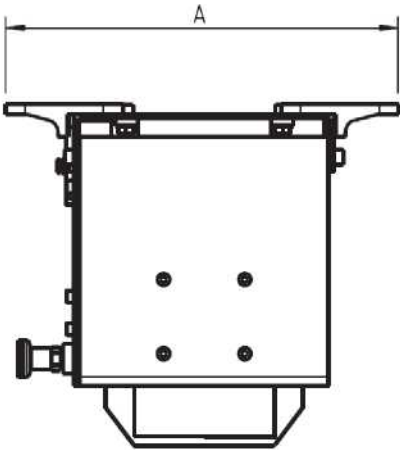
Advantages:

- Reduction of washing detergent consumption
- Reduction of volatile organic compounds (VOC) in that the spray air can be deactivated and the detergent is collected again
- High safety for the user in the flushing phase
- Maximum production and operation safety
- Simple handling and easy use
- Minimum gun dirt during the flushing phases

4.2 TECHNICAL DATA

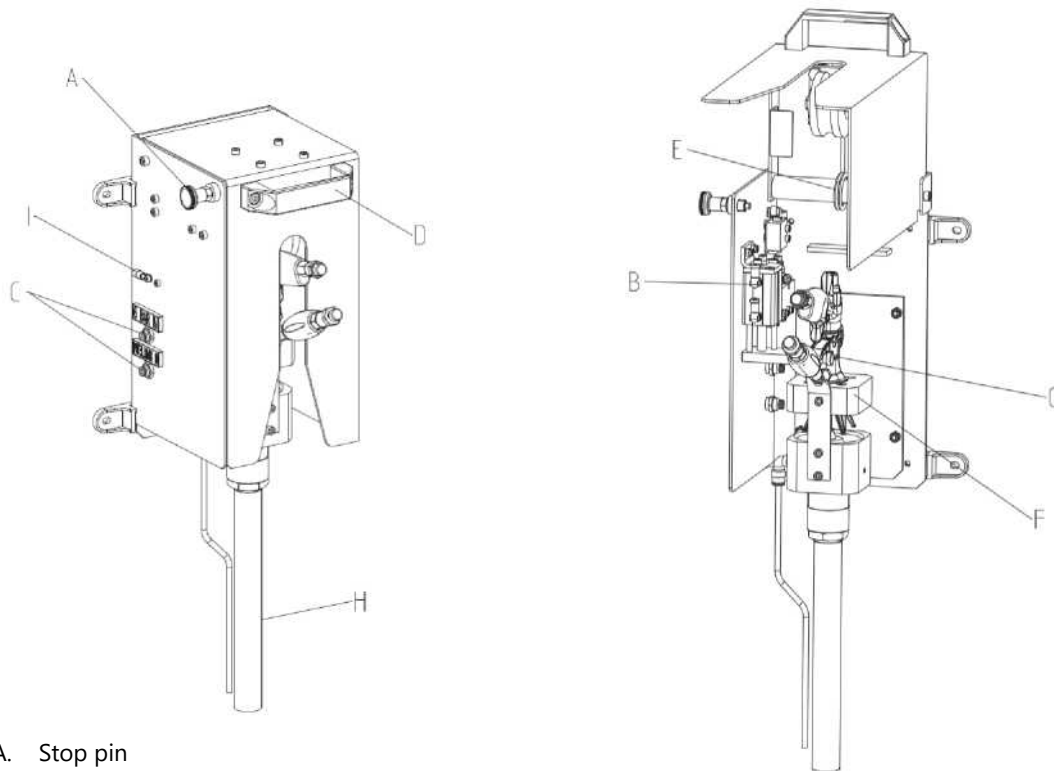
PNEUMATIC DATA	
Intake air pressure	1 Mpa - 10 bar - 145 psi
MEASUREMENT DATA	
Weight	~10 Kg

Size (mm)	T6600.GMSP5	T6600.GM47	T6600.GM1030P	T6600.GM5000 T6600.GM5000-FM
A	257			
B	231			
C	228			
D	176			
E	257			333
F	07			
G	04			
H	04			



5 STRUCTURE OF THE APPARATUS

5.1 APPARATUS STRUCTURE DESCRIPTION



A. Stop pin

Pull the stop pin button out to open the cover.

B. Drive device.

The drive device is a pneumatic cylinder that, if activated, presses the gun trigger.

C. Pneumatic fittings.

Hook-up for the flushing device connection flexible hoses

6 BAR IN: Air supply.

IMIX IN: Pneumatic signal from the electronic mixer.

D. Handle.

Use for the guided opening of the cover.

E. Torsion spring.

The torsion spring keeps the cover in the open position.

F. Stop.

Positioning of the manual gun, forces the nozzle to spray in the discharge opening.

G. Drive shaft. The drive shaft rises, activating the gun trigger.

H. Pipe.

In the flexible hose, the washing liquid is drained downward and must be collected in a suitable and earthed container.

I. Earth eyelet.

Earthing cable connection.

6 PREPARATION FOR START-UP

The gun flushing device must be completed with the foreseen accessories. Check to ensure that the gun used and the flushing device are compatible.

	WARNING
	Installation / Improper use! Danger of injury and damage to the apparatus. For start-up and for all operations, read and follow the operating instructions and the safety standards for the necessary system components.

SIHL_0050_1

CAUTION

Impurities in the spraying system!

Clogging of the spray gun, hardening of the material in the spraying system.

Wash the spray gun and the paint supply using suitable detergent.

SIHL_0001_1

6.1 DEVICE INSTALLATION SITE

The gun flushing device can be placed outside areas with a danger of explosion.

The apparatus should be protected from dirt.

All the pneumatic flexible hoses, earth cables and material flexible hoses must be placed and secured in an orderly fashion.

6.2 WALL MOUNTING

The flushing device must be fastened to a suitable wall with 4 M6 screws. Connect the flushing unit to earth using a suitable earthing cable.


Connect the pneumatic lines to the flushing device.


6 BAR IN: Supply air input.

INTELLIMIX IN: Signal from the electronic mixer.

6.3 EARTHING

The fundamental premise for the safety of the system and for optimum painting is the regular earthing of all the system components, as well as the parts being painted, the paint pumps, the control panel and the spraying booth.


	WARNING
	<p>Electrical discharge of live components in atmosphere containing solvent! Danger of explosion due to the generation of electrical sparks or flames.</p> <ul style="list-style-type: none">- Connect all the apparatus components to earth.- Connect the pieces being painted to earth.

	WARNING
	<p>Intense paint spray in the event of improper earthing! Danger of poisoning. Poor paint quality.</p> <ul style="list-style-type: none">- Connect all the apparatus components to earth.- Connect the pieces being painted to earth.


SIHI_0003_1

7 START-UP AND USE


7.1 PROCEDURE

	WARNING
	<p>High pressure material jet! Danger of death due to injection of paint or solvent.</p> <ul style="list-style-type: none"> - Never place your hands in the trajectory of the material spray. Never aim the spray gun at people. - In the event of injuries to the skin caused by paints or solvents, see a doctor immediately. Inform the doctor of the type of paint or solvent used. - Never seal defective high-pressure components; depressurise them immediately and replace them.

SIHI_0016_1

	WARNING
	<p>Intense formation of fog caused by the spray air! Danger due to the generation of material fog, dirt in the apparatus and in its components. Danger of poisoning</p> <ul style="list-style-type: none"> - Deactivate the spray air before flushing the spray gun or placing it in the spray gun flushing unit.

SIHI_0124_1

	WARNING
	<p>Connection and disconnection of the spray gun! Danger of crushing due to the moving parts of the apparatus.</p> <ul style="list-style-type: none"> - Opening and closing of the apparatus: one hand on the handle and the other hand on the notched body. - Do not operate the apparatus without the covers.

SIHI_0125_1

Procedure:

1. Position the right hand on the cover handle and use the left hand to pull the button out from the stop body. The released cover rises automatically and fully due to the effect of the elastic force of a return spring. Accompany the cover with your hand as it moves.
2. Introduce the gun into the flushing device, taking care to insert the air hood complete with nozzle protection in the stop component and ensuring that the gun nozzle is aligned with the liquid collection hole. To prevent uncontrolled liquid leakage, recheck to ensure that the gun is inserted correctly.
3. With the right hand, close the cover, re-engaging the stop pin.
4. The gun can now be flushed.
5. To fill the tubing with the mixed product, the gun can remain in the flushing device.


8 TROUBLESHOOTING

PROBLEM	PROBABLE CAUSE	CORRECTIVE ACTION
The gun is positioned in the flushing device, but nevertheless, it is not possible to flush or fill.	<ul style="list-style-type: none"> - No air pressure - No signal from the electronic mixer - Cylinder faulty or jammed 	<ul style="list-style-type: none"> - Power the device - Check the cylinder's pneumatic tubing - Replace the cylinder

9 MAINTENANCE AND REPAIR

Before carrying out any maintenance work on the gun device, the following rules must be observed:

- Remove the gun from the flushing device and depressurise the device



	WARNING
	<p>Improper maintenance/repair! Danger of injury and damage to the apparatus.</p> <ul style="list-style-type: none"> - Have repairs and replacement of components done only by specialised personnel or a WAGNER service centre. - Before any work on the apparatus and in before interrupting work: <ul style="list-style-type: none"> - Deactivate electrical energy / compressed air supply. - Depressurise the spray gun and the apparatus. - Protect the spray gun from start-up. - For any work, follow the service and operating instructions.

SIHL_0004_1

10 DISPOSAL

After disassembling the flushing device, the various materials must be disposed of separately.
All the substances, materials and consumable products must be disposed of in compliance with the prevailing standards.

11 ACCESSORIES

P/N	DESCRIPTION	
U942.00B	Control panel (Use outside the Ex zone) Made up of: Pneumatic valve Pressure reducer	
T600.1080EA	Solenoid valve (Use outside the Ex zone) Made up of: Electro-pneumatic valve 2-metre cable	

12 REPLACEMENT PARTS

12.1 HOW TO ORDER REPLACEMENT PARTS?

Always provide the following information to guarantee delivery of the right replacement part.

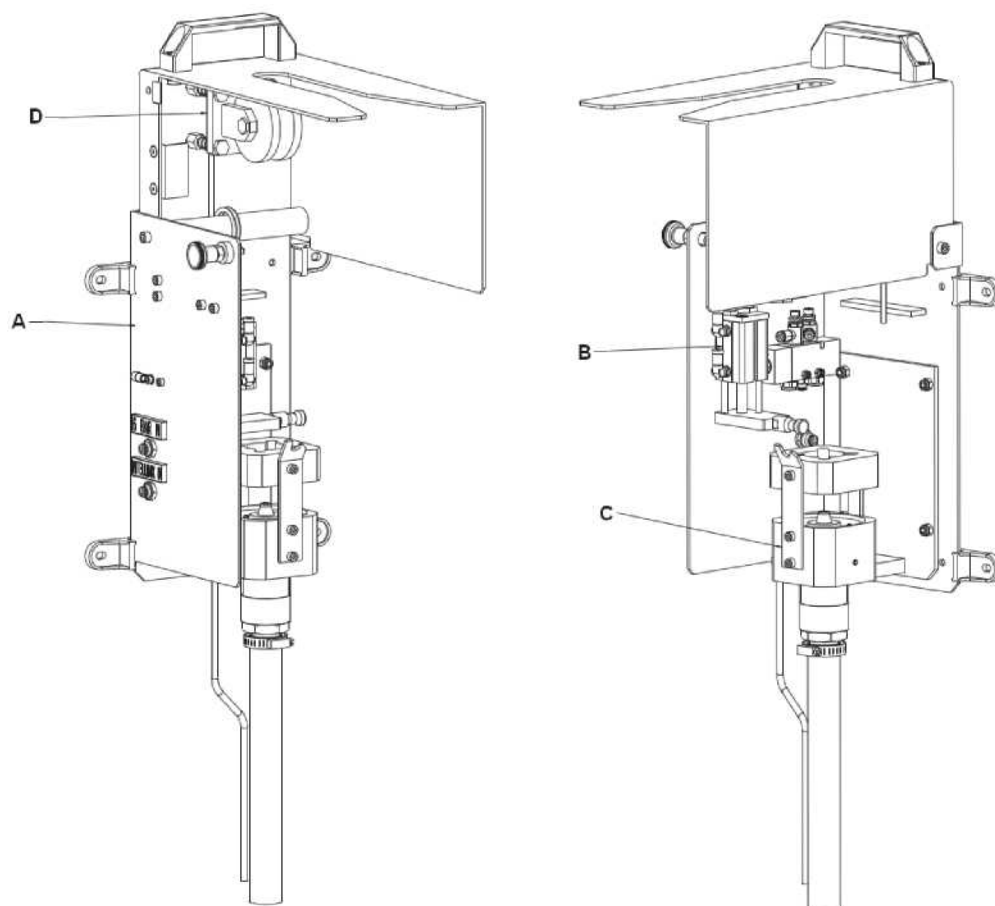
Part number, description and quantity.

The quantity is not necessarily the same as the number indicated in the "Quantity" column.

This number simply indicates how many of the respective parts are used in each subassembly.

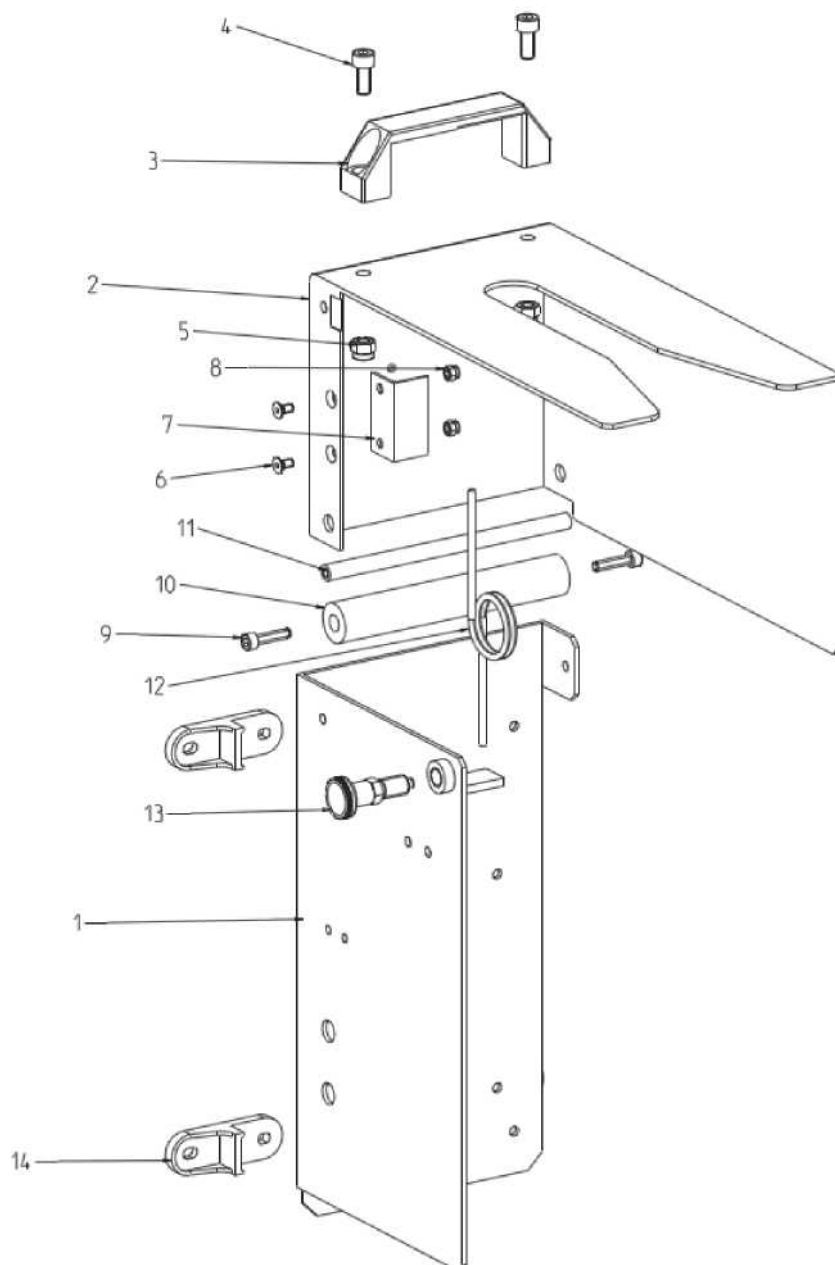
The following information is also necessary to guarantee uniform handling of the order:

- Address for invoicing
- Address for shipping
- Name of the person to contact in the event of any queries
- Type of shipping requested (by air or via post, sea or land)

12.2 FLUSHING DEVICE (COMPLETE VIEW)

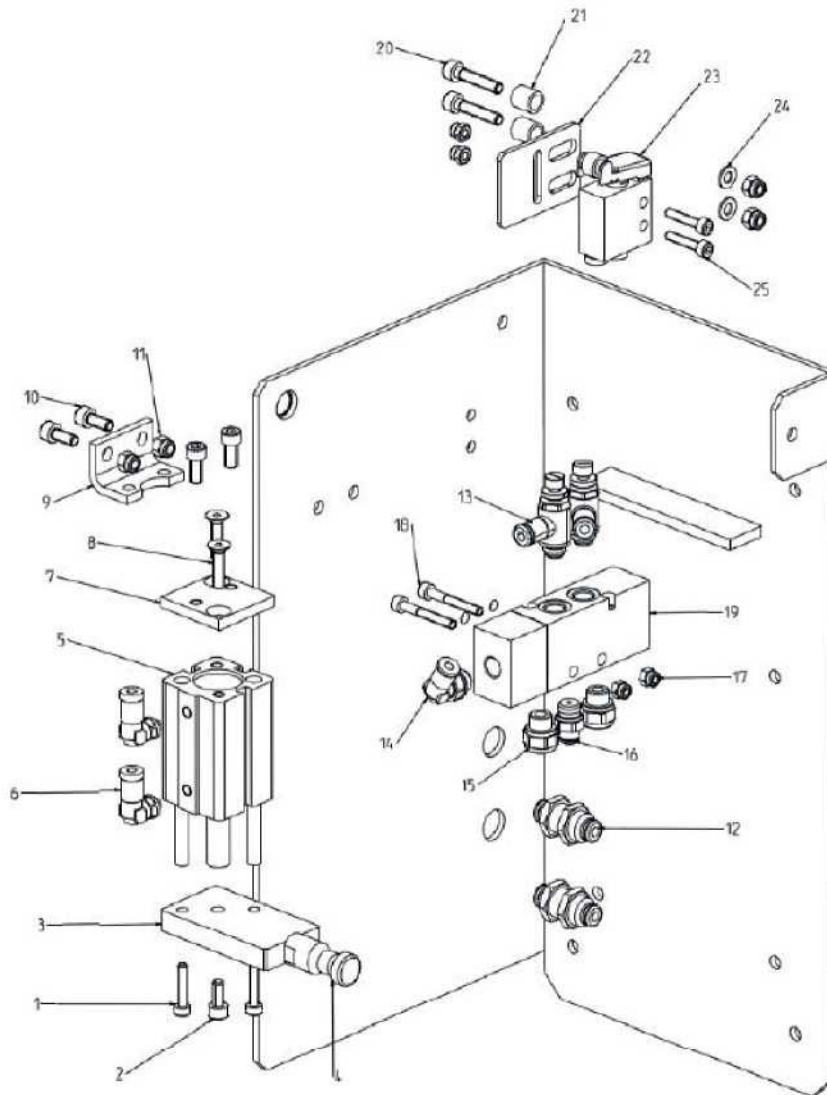
POS.	Quantity	Description
A	1	FLUSHING DEVICE (EMPTY)
B	1	FLUSHING DEVICE (PNEUMATIC DRIVE)
C	1	FLUSHING DEVICE (GUN LOCKING UNIT)
D	1	FLUSHING DEVICE (GUN TIGHTENING UNIT)

12.3 FLUSHING DEVICE (EMPTY)



Pos.	Qty	P/N				Description
		T6600.GMSP5	T6600.GM47	T6600.GM1030P	T6600.GM5000 T6600.GM5000-FM	
1	1	E3328.62A			3328.62B	Panel
2	1	E3329.62A			E3329.62B	Cover
3	1	R220.07				Handle
4	2	K136.62A				Screw
5	2	K312.62				Nut
6	2	K147.62A				Screw
7	1	E3343.01A				Corner bracket
8	2	K323.62				Nut
9	2	K160.03				Screw
10	1	B0426.07				Cover pin
11	1	B0424.03				Spring pin
12	1	H294.00C			H294.00CA	Torsion spring
13	1	R253.00				Stop pin
14	1	Y040.00				Wall mounting brackets

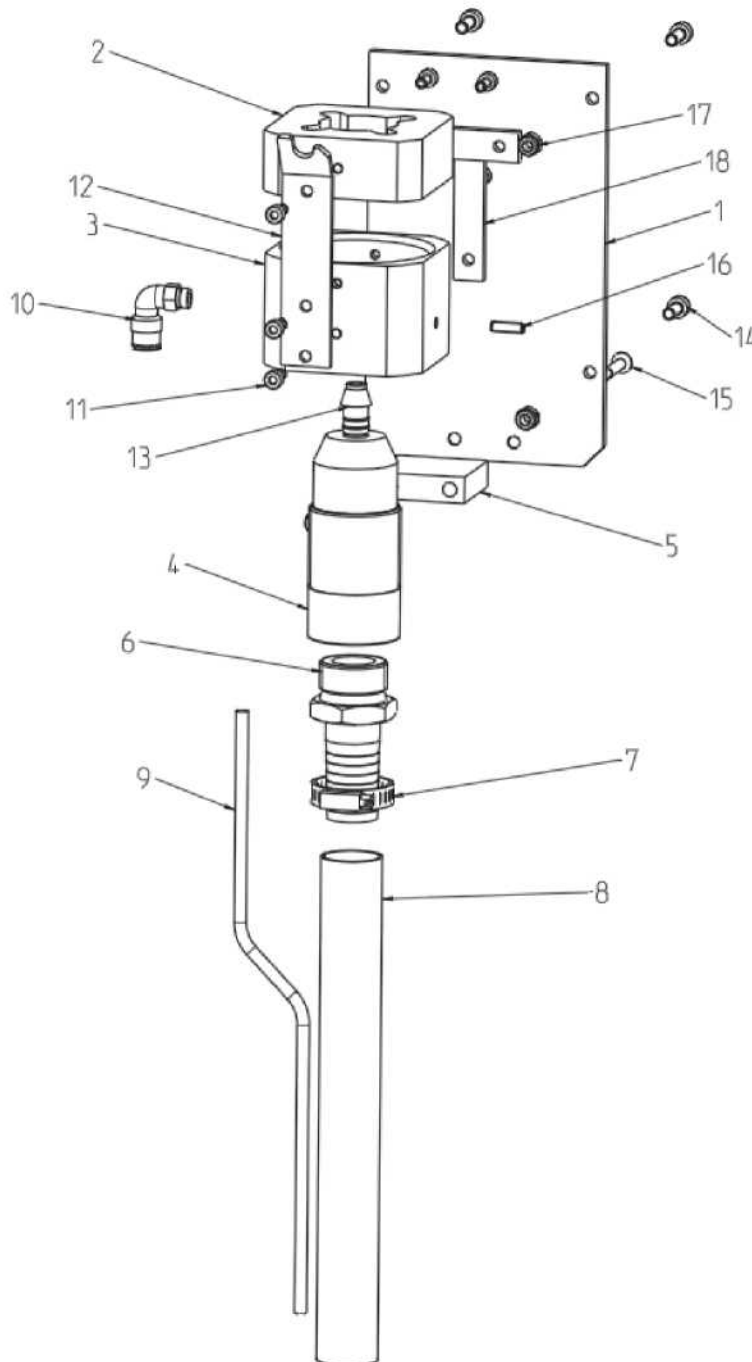
12.4 FLUSHING DEVICE (PNEUMATIC DRIVE)



Position	Qty	P/N	Description
1	2	K1011.03A	Screw
2	1	K147.03	Screw
3	1	E3334.62C	Plate
4	1	B0421.03A	Trigger activation
5	1	R058.00	Pneumatic cylinder
6	2	M303.00	Fitting
7	1	E3334.62F	Plate
8	2	K182.62A	Screw
9	1	R058.00A	Bracket
10	2	K114.62	Screw
11	4	K323.62	Nut
12	2	M355.00	Passwall connector
13	2	M115.00F	Flow regulator
14	1	M335.00	Fitting
15	2	H517.00A	Silencer
16	1	M223.04	Fitting
17	4	K302.62	Nut
18	2	K170.62	Screw
19	1	P439.00A	Pneumatic valve
20	2	K182.62	Screw
21	2	A532.62	Spacer
22	1	E3347.62	Plate
23	1	P4009.00A	Pneumatic sensor
24	2	K515.62	Lock washer
25	2	K103.62B	Screw

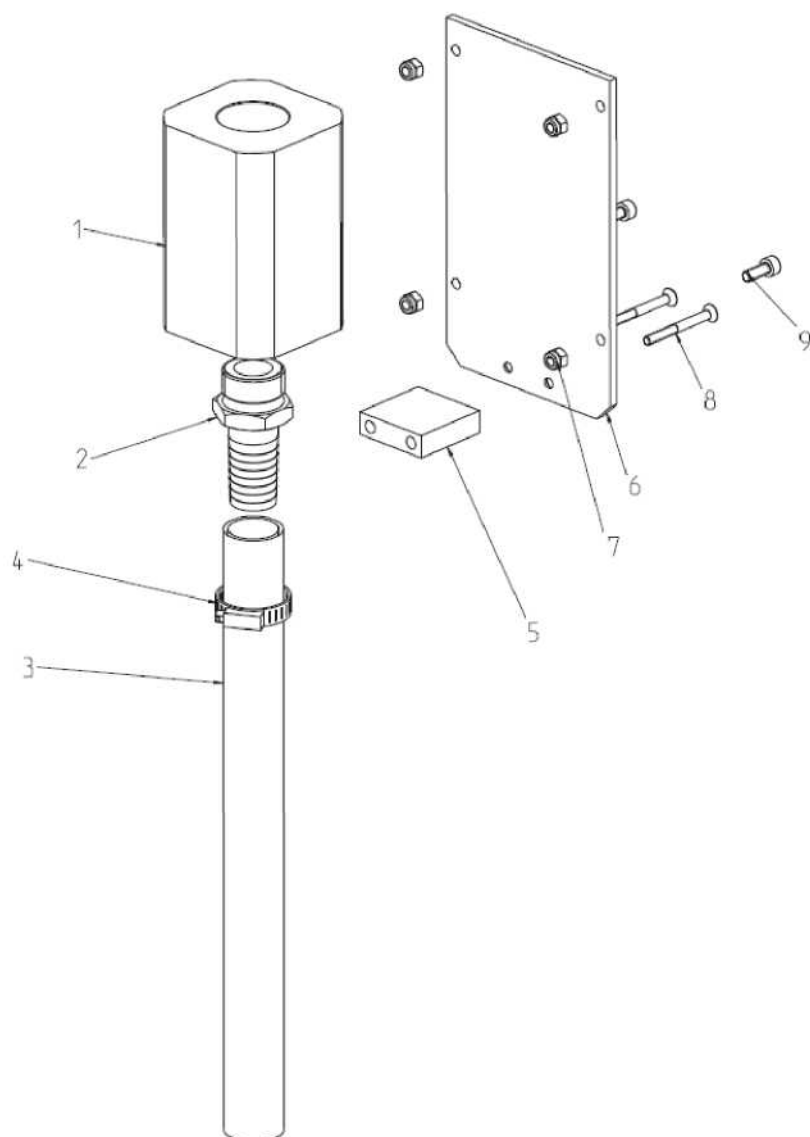
12.5 FLUSHING DEVICE (GUN LOCKING UNIT)

12.5.1 FLUSHING DEVICE (GM4700)



Position	Qty	P/N	Description
1	1	E3332.62A	Plate
2	1	B0431.07B	Gun inlet
3	1	B0430.62	Support
4	1	B0433.01	Guidance pistol GM
5	1	E3343.01	Plate spacer cap
6	1	M232.00	Fitting
7	1	R605.00	Hose Clamp
8	1 m	S110.06	Dump Hose
9	1 m	S102.07P	Support Flushing hoset
10	1	M372.00	Fitting
11	6	K147.03	Screw
12	1	E3334.62DA	Plate
13	1	B0431.07	Insert
14	4	K140.62	Screw
15	2	K1055.03A	Screw
16	1	K035.03A	Headless screw
17	4	K311.03	Nut
18	1	E3334.62E	T plate

12.5.2 FLUSHING DEVICE (SP5)



EDITION 12 / 2021

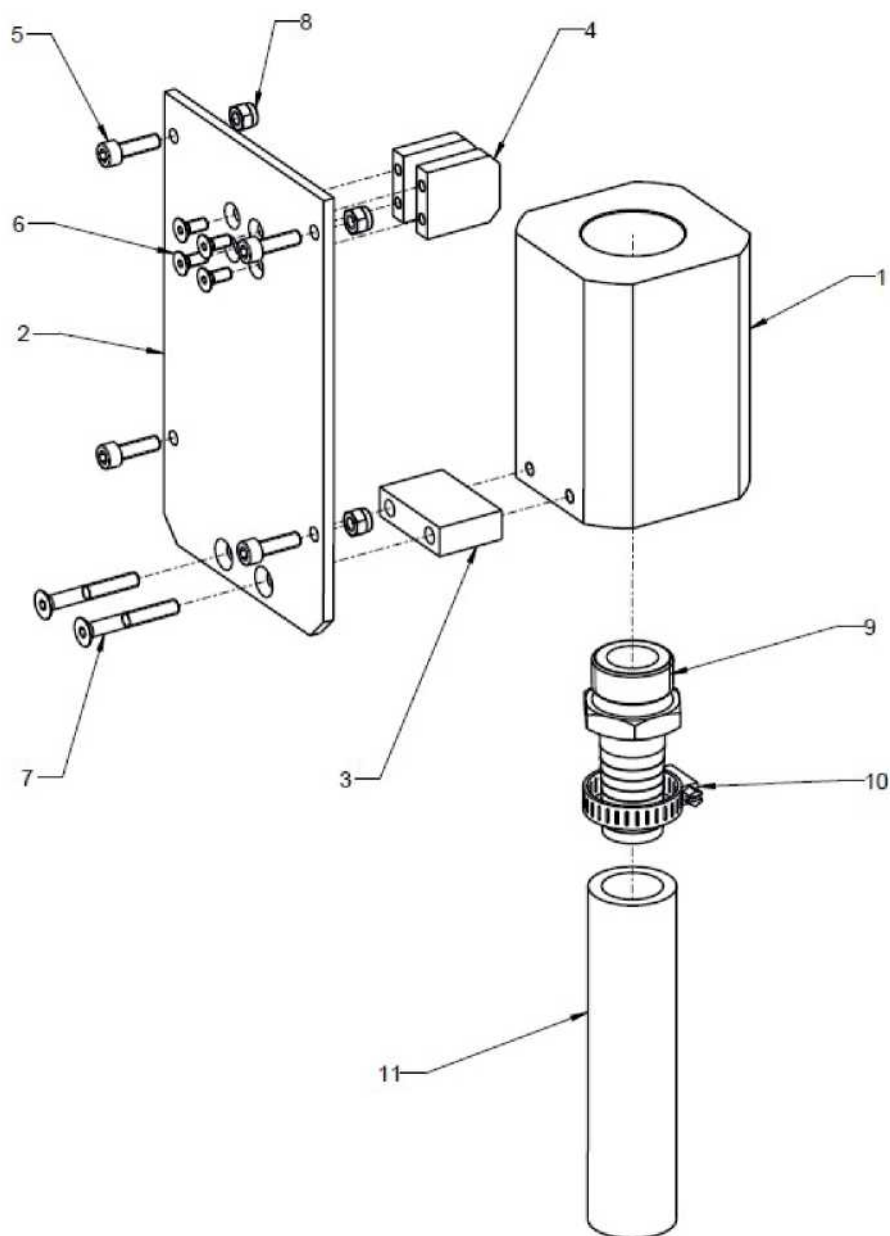
Gun flush Box

INSTRUCTIONS FOR USE



Position	Qty	P/N	Description
1	1	B0431.07C	Sheathing
2	1	M232.00	Hose connection
3	1 m	S110.06	Hose
4	1	R605.00	Clamp
5	1	E3343.01	Spacer
6	1	E3332.62A	Plate
7	4	K311.03	Nut
8	2	K1055.03A	Screw
9	4	K140.62	Screw

12.5.3 FLUSHING DEVICE (??)



EDITION 12 / 2021

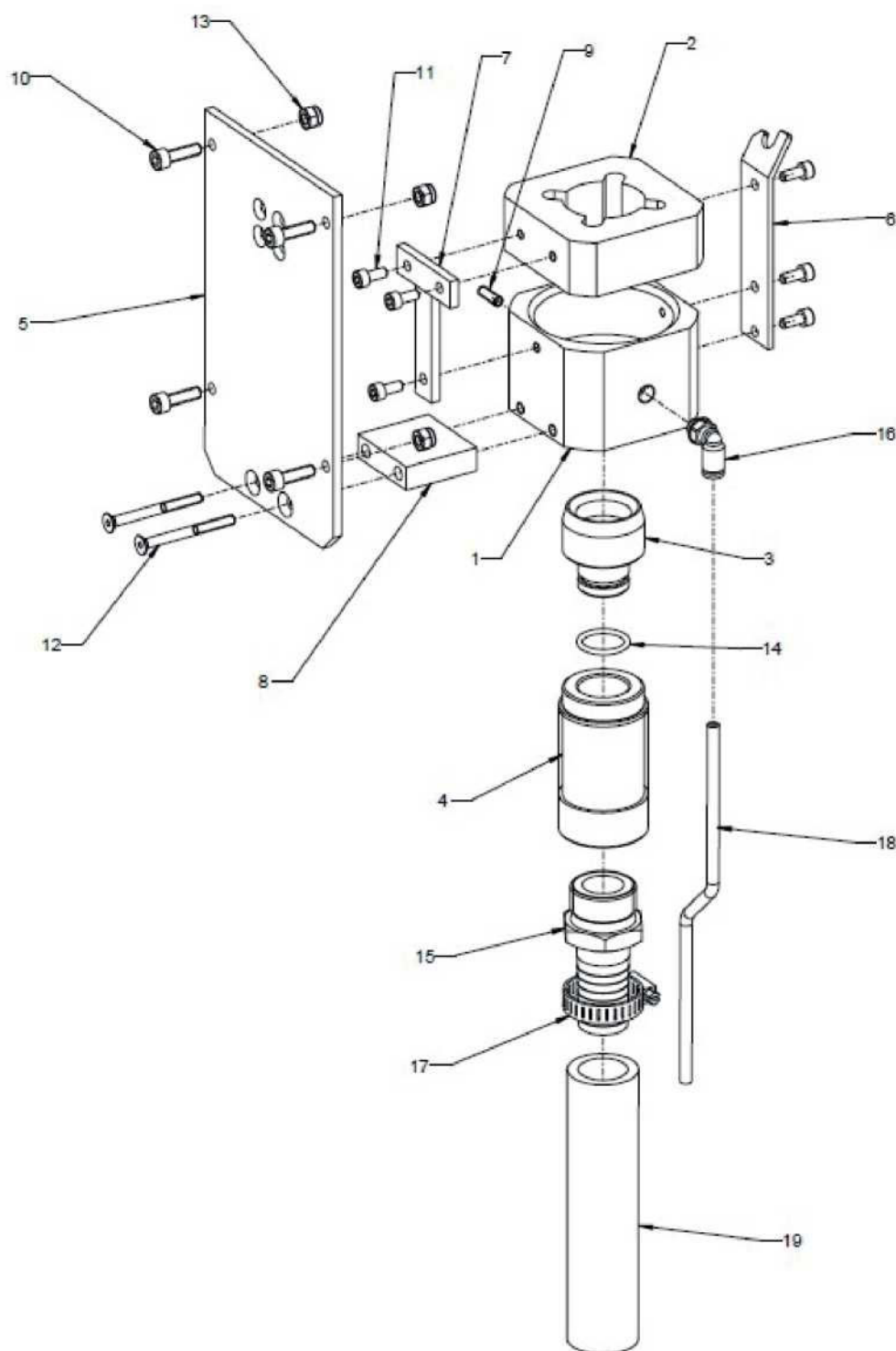
Gun flush Box

INSTRUCTIONS FOR USE



Position	Qty	P/N	Description
1	1	B0431.07E	Sheathing
2	1	E3332.62A	Plate
3	1	E3573.01	Spacer
4	2	E3575.07A	Anti-rotation plates
5	4	K107.62	Screw
6	4	K147.62A	Screw
7	2	K184.62A	Screw
8	4	K311.03	Nut
9	1	M232.00	Hose connection
10	1	R605.00	Clamp
11	1 m	S110.06	Drain pipe

12.5.4 FLUSHING DEVICE (GM5000 CE – GM5000 EAC-FM)

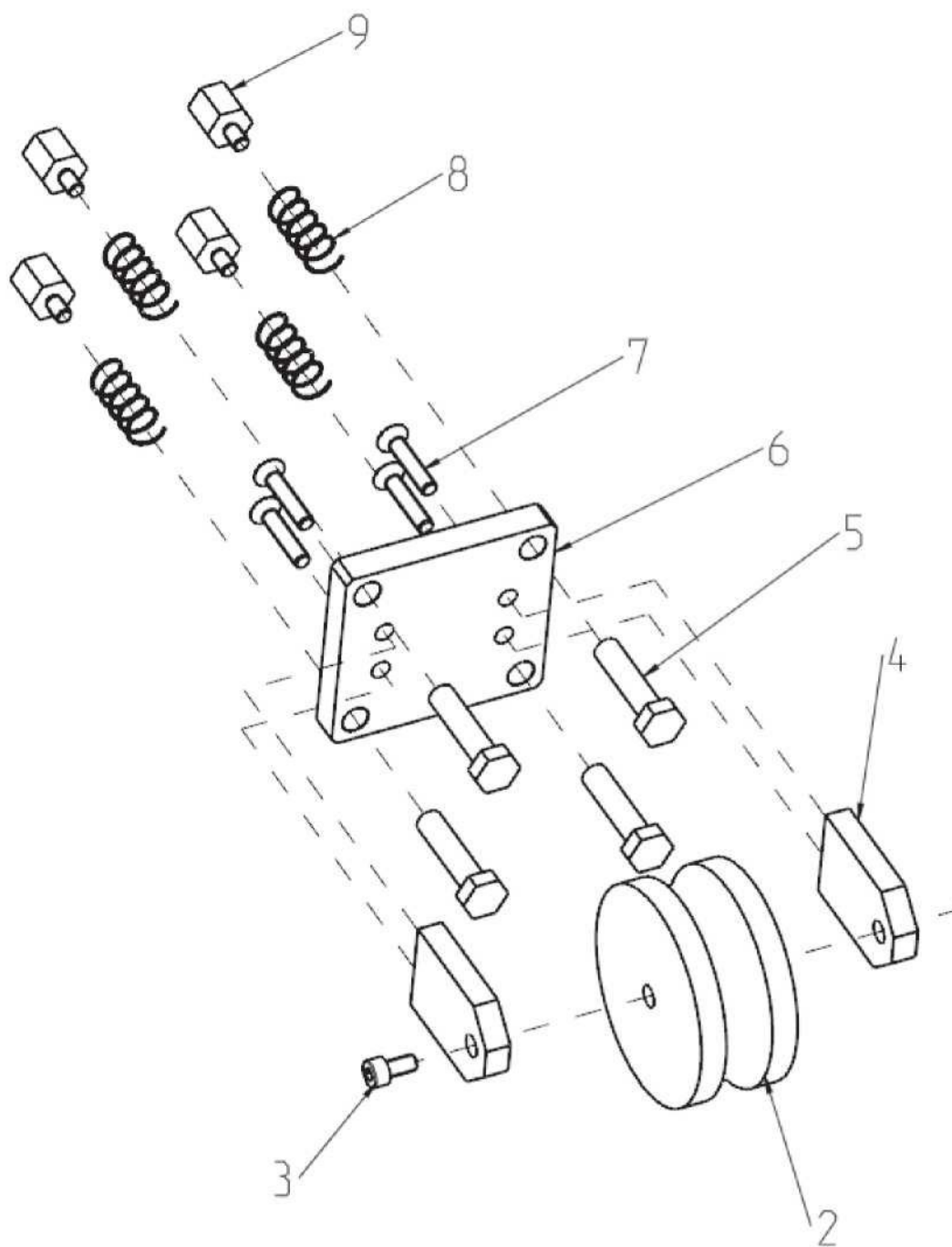


Position	Qty	P/N	Description
1	1	B0430.62	Register
2	1	B0431.07F	Gun Inlet for GM5000 CE
		B0431.07F-FM	Gun inlet for GM5000 EAC - FM
3	1	B0431.07FB	Insert
4	1	B0433.01A	Gun register
5	1	E3332.62A	Plate
6	1	E3334.62DA	Plate
7	1	E3334.62E	"T" plate
8	1	E3573.01A	Spacer
9	1	K035.03A	Grub screw
10	4	K107.62	Screw
11	6	K147.03	Screw
12	2	K184.03AC	Screw
13	4	K211.03	Nut
14	1	L221.06	O-ring
15	1	M232.00	Hose connection
16	1	M372.00	Fitting
17	1	R605.00	Clamp
18	1 m	S102.07P	Register wash hose
19	1 m	S110.06	Drain pipe

Nota

It is possible to modify the T6600.GM5000 model, suitable for GM 5000 CE guns, into the T6600.GM5000-FM model, suitable for GM 5000 EAC FM guns, by replacing the B0431.07F gun inlet with the B0431.07F-FM gun inlet

12.6 FLUSHING DEVICE (GUN TIGHTENING UNIT)



EDITION 12 / 2021

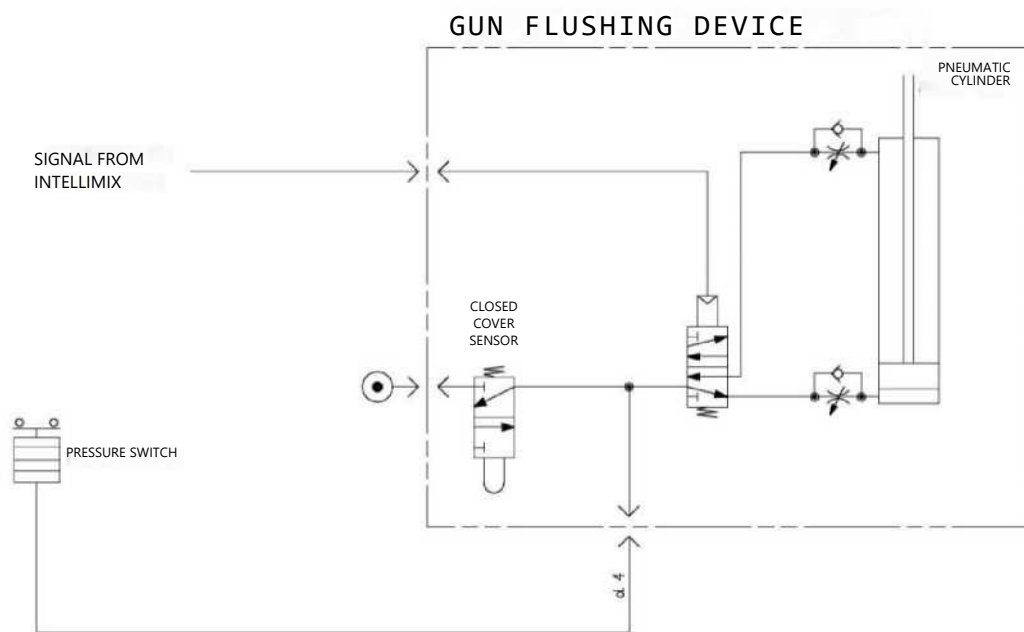
Gun flush Box

INSTRUCTIONS FOR USE

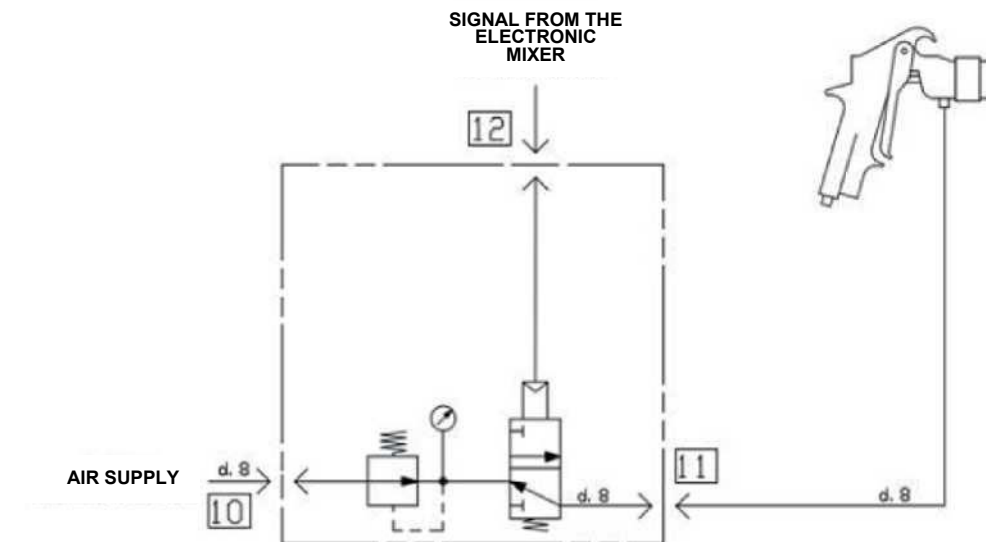


Position	Qty	P/N	Description
1	1	B0423.03A	Wheel pin
2	1	B0419.07	Wheel
3	1	K174.62	Screw
4	2	E3331.62	Wheel support plate
5	4	B0423.03A	Wheel pin
6	1	E3330.62	Wheel plate
7	4	K182.62A	Screw
8	4	H294.00	Compression spring
9	4	B0425.03	Wheel spacer

13.1 FLUSHING DEVICE PNEUMATIC DIAGRAM



13.2 CONTROL PANEL PNEUMATIC DIAGRAM



EDITION 12 / 2021

Gun flush Box

INSTRUCTIONS FOR USE



Five horizontal lines for writing instructions.

Germany J. WAGNER GmbH Otto-Lilienthal-Str. 18 Postfach 1120 D- 88677 Markdorf Telephone: ++49/ (0)7544 / 5050 Telefax: ++49/ (0)7544 / 505200 E-Mail: service.standard@wagner-group.com	Switzerland J. WAGNER AG Industriestrasse 22 Postfach 663 CH- 9450 Altstätten Telephone: ++41/ (0)71 / 757 2211 Telefax: ++41/ (0)71 / 757 2222 E-Mail: rep-ch@wagner-group.ch
Belgium WAGNER Spraytech Benelux BV Veilinglaan 56 B- 1861 Wolvenstem Telephone: ++32/ (0)2 / 269 4675 Telefax: ++32/ (0)2 / 269 7845 E-Mail: info@wagner-group.be	Denmark WAGNER Spraytech Scandinavia A/S Kornmarksvej 26 DK- 2605 Brøndby Telephone: ++45/ 43 271 818 Telefax: ++45/ 43 43 05 28 E-Mail: wagner@wagner-group.dk
United Kingdom WAGNER Spraytech (UK) Ltd. Haslemere Way Tramway Industrial Estate GB- Banbury, OXON OX16 8TY Telephone: ++44/ (0)1295 / 265 353 Telefax: ++44/ (0)1295 / 269861 E-Mail: enquiry@wagnerspraytech.co.uk	France J. WAGNER France S.A.R.L. 5, Ave. du 1er Mai - BP 47 F- 91122 Palaiseau-Cedex Telephone: ++33/ (0)1 / 69 19 46 76 Telefax: ++33/ (0)1 / 69 81 72 57 E-Mail: division.batiment@wagner-france.fr
The Netherlands WAGNER SPRAYTECH Benelux BV Zonnebaan10 NL- 3542 EC Utrecht PO Box 1656 3600 BR Maarssen Telephone: ++31/ (0)30 / 241 4155 Telefax: ++31/ (0)30 / 241 1787 E-Mail: info@wagner-group.nl	Italy Wagner S.p.A. Via Santa Vecchia, 109 I- 23868 Valmadrera (LC) Telephone: ++39/ 0341 / 210200 Telefax: ++39/ 0341 / 210100 E-Mail: wagner_it_va@wagner-group.com
Japan WAGNER Spraytech Ltd. 2-35, Shinden Nishimachi J- Daito Shi, Osaka, 574-0057 Telephone: ++81/ (0)720 / 874 3561 Telefax: ++81/ (0)720 / 874 3426 E-Mail: marketing@wagner-japan.co.jp	Austria J. WAGNER GmbH Otto-Lilienthal-Str. 18 Postfach 1120 D- 88677 Markdorf Telephone: ++49/ (0)7544 / 5050 Telefax: ++49/ (0)7544 / 505200 E-Mail: service.standard@wagner-group.com
Sweden WAGNER SVERIGE AB Muskötgatan 19 S- 25466 Helsingborg Telephone: ++46/ (0)42 150 020 Telefax: ++46/ (0)42 150 035 E-Mail: mailbox@wagner.se	Spain WAGNER Spraytech Iberica S.A. Ctra. N- 340, Km. 1245,4 E- 08750 Molins de Rei (Barcelona) Telephone: ++34/ (0)93/ 680 0028 Telefax: ++34/ (0)93/ 668 0156 E-Mail: info@wagnerspain.com
Czech Republic WAGNER s.r.o. Na Belidle 1/63 C- 15000 Praha 5 Telephone: ++420/ (0)2/ 573 123 24 Telefax: ++420/ (0)2/ 545 001 E-Mail: wagner.s.r.o.@telecom.cz	USA Walter Pilot North America 46890 Continental Drive Chesterfield, MI 48047 USA Telephone: ++1/ 877 / 925-8437 Telefax: ++1/ 586 / 598-1457 http://www.waltherpilotna.com



Order number ZZB017ITA

Germany

J.WAGNER GmbH
Otto-Lilienthal-Str. 18
Postfach 1120
D- 88677 **Markdorf**
Telephone ++49/ (0)7544 / 5050
Telefax ++49/ (0)7544 / 505200
E-Mail: service.standard@wagner-group.com

Switzerland

J.WAGNER AG
Industriestrasse 22
Postfach 663
CH- 9450 **Altstätten**
Telephone ++41/(0)71 / 757 2211
Telefax ++41/(0)71 / 757 2222
E-Mail: rep-ch@wagner-group.ch

www.wagner-group.com