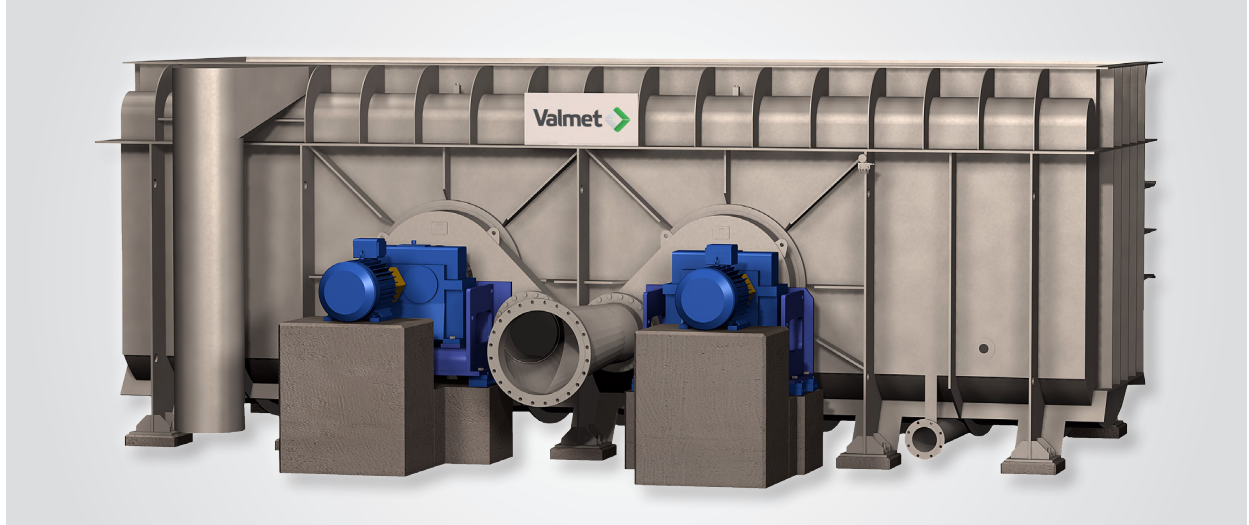


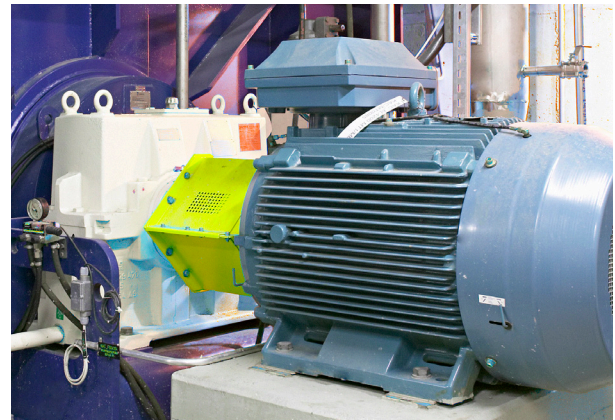
Pulper rebuild with new OptiSlush rotor unit

For UTM and other horizontal pulpers



The OptiSlush HP rotor unit features proven and reliable technology for higher capacity and consistency.

The excellence of the OptiSlush HP rotor is based on active circulation using pumping vanes and deflaking using spoke vanes. Saw-tooth rotor design is used especially for slushing wet-strength, board, coated and special grades as well as slabs.



Rotor type	Rotor dia	Motor power
	mm	kW
HP-24	610	30 - 90
HP-33	845	75 - 200
HP-42	1060	110 - 400
HP-50	1270	132 - 500
HP-63	1600	250 - 710

Features

- Optimum rotor and motor size for each case
- Standard 360-degree holes screen plate for UTM pulpers
- 180-degree holes screen plate especially for wet-strength, board, coated and special grades as well as slabs
- Gear drive saves space through direct mounting of the rotor on the low-speed shaft of the gear
- Belt drive features a heavy-duty construction
- Isolation ring separates the rotor unit from the pulper vat without metallic contact
- Isolation ring reduces vibration and noise level
- Trouble-free operation
- Stock recirculation can be arranged with separate pump and pumping connection
 - lower pumping costs
 - optimum pipe and valve sizing for recirculation
 - accurate consistency control



Rotor with standard 360° screen plate.



Saw-tooth rotor with 180° screen plate.