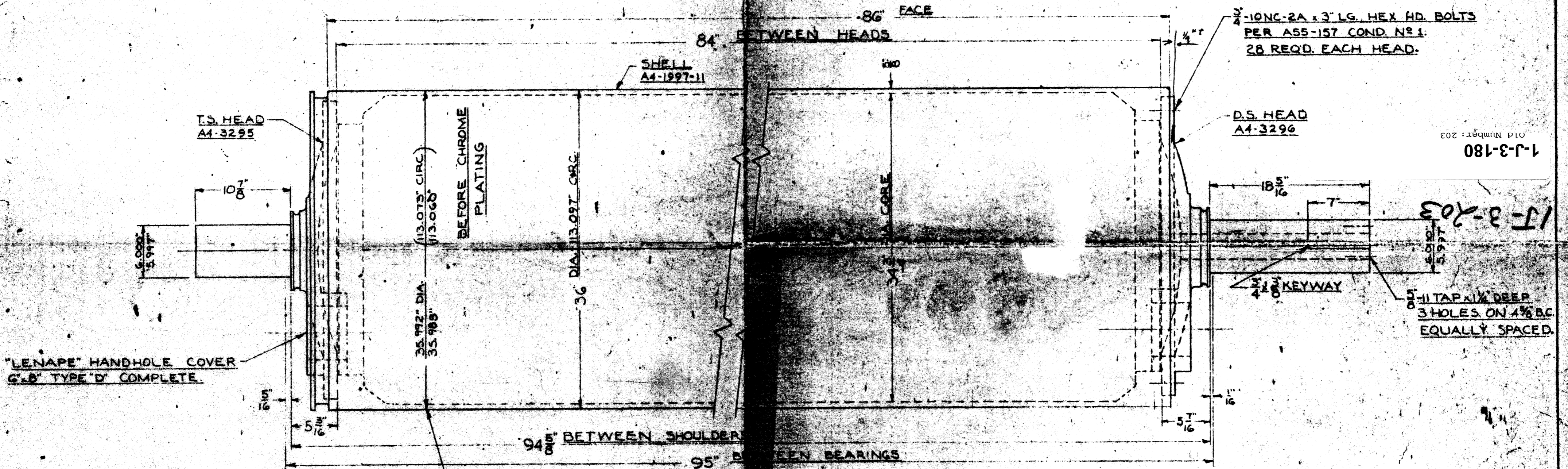


1628 A
ON
DRAWING
A4-3297

STANDARD A.S.A. B46.1-1955
FINISHES IN MICRO-INCHES
APPLY WHERE DESIGNATED

DECIMAL DIMENSIONS MUST BE STRICTLY OBSERVED. ANGULAR DIMENSIONS ± 1/2° UNLESS OTHERWISE SPECIFIED. FRACTIONAL DIMENSIONS ± 1/64

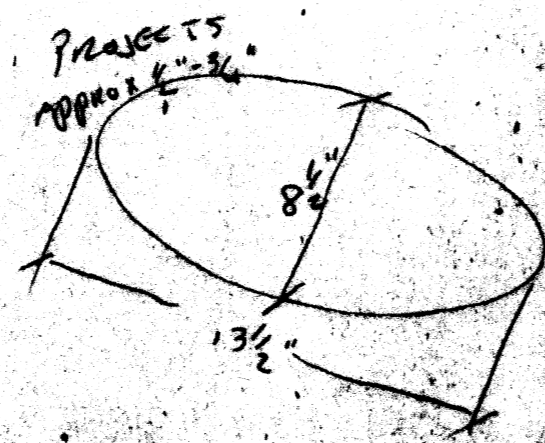
This print is the exclusive property of the Rice Barton Corporation and is loaned only for REFERENCE for equipment and maintenance or in dealing with the Rice Barton Corporation. It is CONFIDENTIAL, and its commercial use or disclosure to others is prohibited, and it is not to be reproduced or copied in whole or in part. To be returned when it has served the above purpose or upon request.



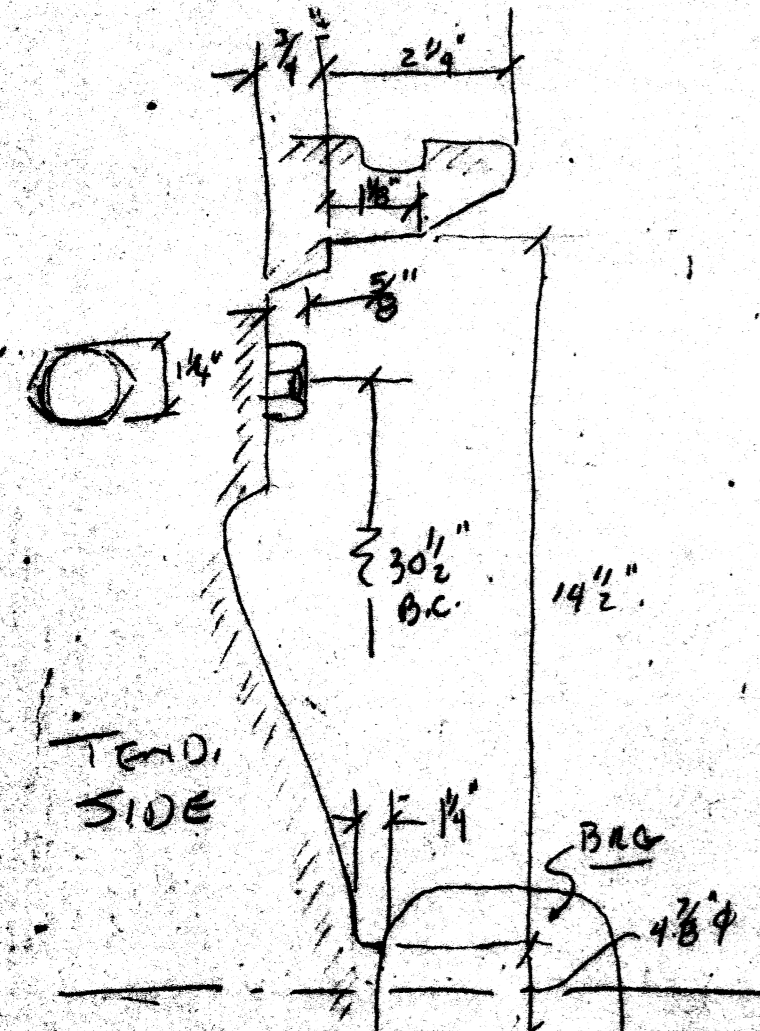
Old Number: 203
1-J-3-180

15-3-203

NOTE:
WHEN CHROME-PLATED DRYER IS CALLED FOR, GRIND TO THIS SPECIFICATION. APPLY "CRODON" CHROME PLATING .004"-.006" THK. - POLISH AFTER PLATING.



29
4/8
33/8



ISSUE	REVISION	DATE	BY
15-3-203			
RICE BARTON CORPORATION WORCESTER, MASS.			
TITLE DRYER PART			
SUB TITLE 36" DIA. DRYER ASS'Y. (75 P.S.I.)			
FOR CRANE & CO. (PIONEER MILL - 84" MACH.)			
SCALE 1/2" = 1'-0"	DATE 1-27-64	CONT. 2336	
ASSEMBLY 13-372	PREVIOUS DWG.	FOLLOWED BY	
DR. BY HOLMBERG	DRAWING NO.		
CHK. BY ELSH	A4-3297		
APPR. BY			

A75-36-13