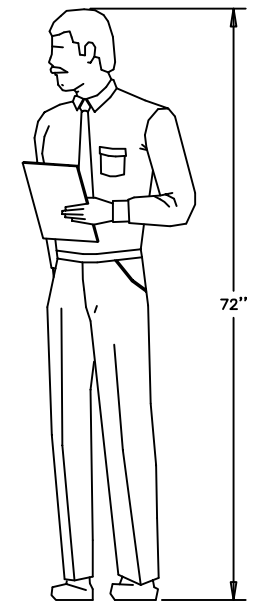
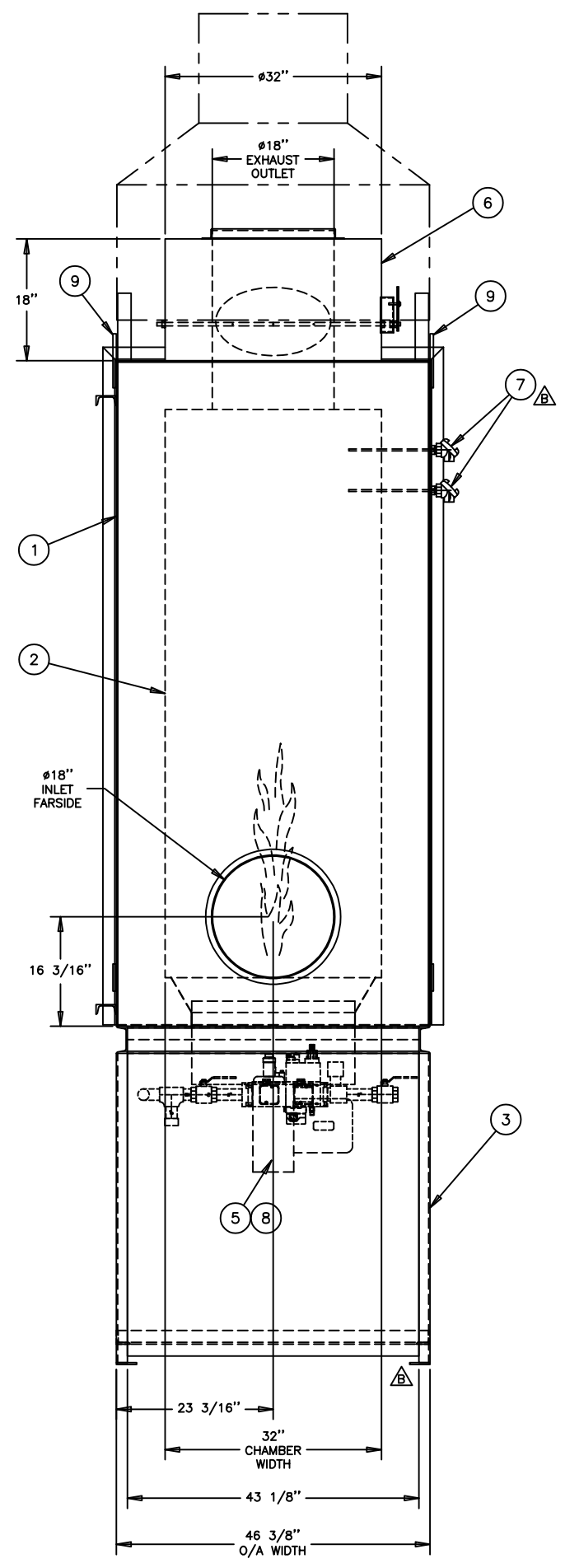
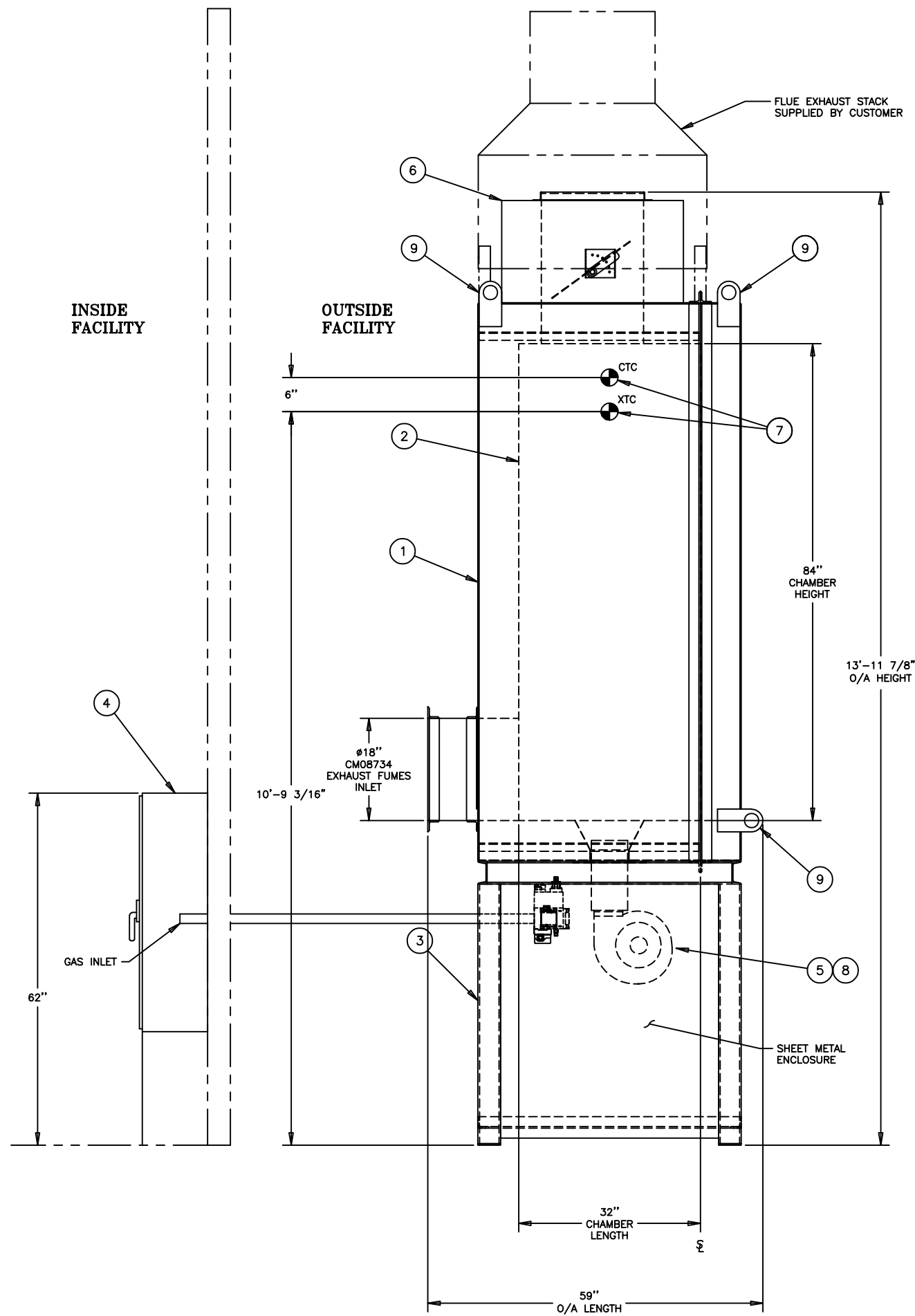


THIS DRAWING, INCLUDING THE PRINCIPLE OF DESIGN, IS THE PROPERTY OF AND IS SUBMITTED BY WISCONSIN OVEN CORPORATION WITH THE AGREEMENT THAT IT IS NOT TO BE REPRODUCED, COPIED, OR LOANED, IN PART OR WHOLE. IT IS NOT TO BE USED IN ANY MANNER THAT MAY CONSTITUTE A DETRIMENT DIRECTLY OR INDIRECTLY TO WISCONSIN OVEN CORP. ACCEPTANCE OF THIS DRAWING WILL BE CONSTRUED AS AN AGREEMENT TO THE ABOVE.



SPECIFICATIONS:
ELECTRICAL: 480V/3PH/60Hz APPROX. 2 AMPS
FUEL: NATURAL GAS @ 1-5 PSIG
 1,600 SCFH @ 1,000 BTU/SCF
 1,600,000 BTUH
TEMPERATURE: 1,500°F MAXIMUM
 1,400°F NORMAL
CAPACITY: 300 SCFM AIR @ 200°F (MINIMUM)
INCINERATION TIME: 1 SECOND
PURGE TIME: 6 MINUTES
PAINT COLOR: INCINERATOR - FEDERAL SAFETY BLUE
 CONTROL PANEL - FEDERAL SAFETY BLUE
 PIPING - NOT PAINTED
 CONDUIT - NOT PAINTED
 GUARDS- OSHA YELLOW

- NOTES:**
1. WOC MEDIUM LOGO TO BE LOCATED ON SIDE OF INCINERATOR AT EYE LEVEL
 2. CONTROL PANEL TO BE FREE STANDING REMOTE MOUNTED INSIDE FACILITY, WIRING & CONDUIT BETWEEN CONTROL PANEL & INCINERATOR BY CUSTOMER.
 3. APPROXIMATE SHIPPING WEIGHT: 3,900 lbs
 4. INCINERATOR SHIPPED COMPLETELY ASSEMBLED.
 5. INCINERATOR MOUNTED OUTSIDE.
 6. EXHAUST STACK & DUCTWORK BETWEEN THE OVEN & INCINERATOR WILL BE SUPPLIED & INSTALLED BY CUSTOMER.
 7. INCINERATOR WILL START WITH OVEN & SHUT-OFF DURING OVEN COOLING CYCLE.
 8. 1,000 CFM @ 2" S.P. EXHAUST SUPPLIED BY WISCONSIN OVEN CORP.
 9. SNOW MUST BE KEPT CLEAR OF INCINERATOR BASE

15					
14					
13					
12					
11					
10					
6	9	LIFTING LUGS	309 0034		
1	8	STD AIR FLOW SWITCH MOUNTING	S 220-4-1814		
2	7	STD THERMOCOUPLE MOUNTING	S 220-4-1813		
1	6	MANUAL EXHAUST DAMPER ASSEMBLY	241-4-1133		
1	5	GAS PIPING ASSEMBLY - 160 AH	211-4-1800		
1	4	POWER & CONTROL WIRING	502-4-1568		
1	3	BASE ASSEMBLY	207-4-1693		
1	2	REFRACTORY INSTALLATION ASSEMBLY	233-4-1011		
1	1	OUTER SHELL ASSEMBLY	201-4-1245		
QTY	ITEM	DESCRIPTION	PART NO.	DRW'G OR STD. NO.	GRP

D	AS BUILT/SHIPPED	TT	5/10/04
C	CHANGED SPLITLINE LOCATION	FA	3/24/04
B	CUSTOMER CHANGES	FA	3/23/04
A	AS RELEASED FOR APPROVAL	FA	3/15/04
NO	REVISION	BY	DATE

WISCONSIN OVEN CORP.
 EAST TROY, WISCONSIN 53120

INCINERATOR
 2'6" W X 7'0" H X 2'6" L

REV. D

DRAWN BY FA DATE 3/11/04 DWG. NO.
 CHK'D BY TT DATE 3/15/04 115-4-1206
 SCALE 1"=1'-0" JOB NO CM09341 Page 1 of 1