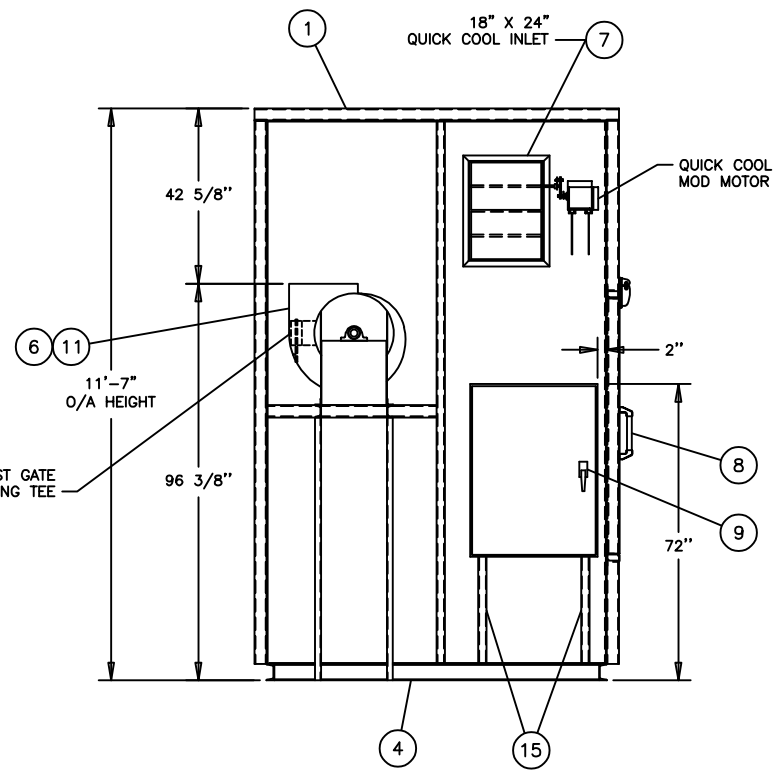
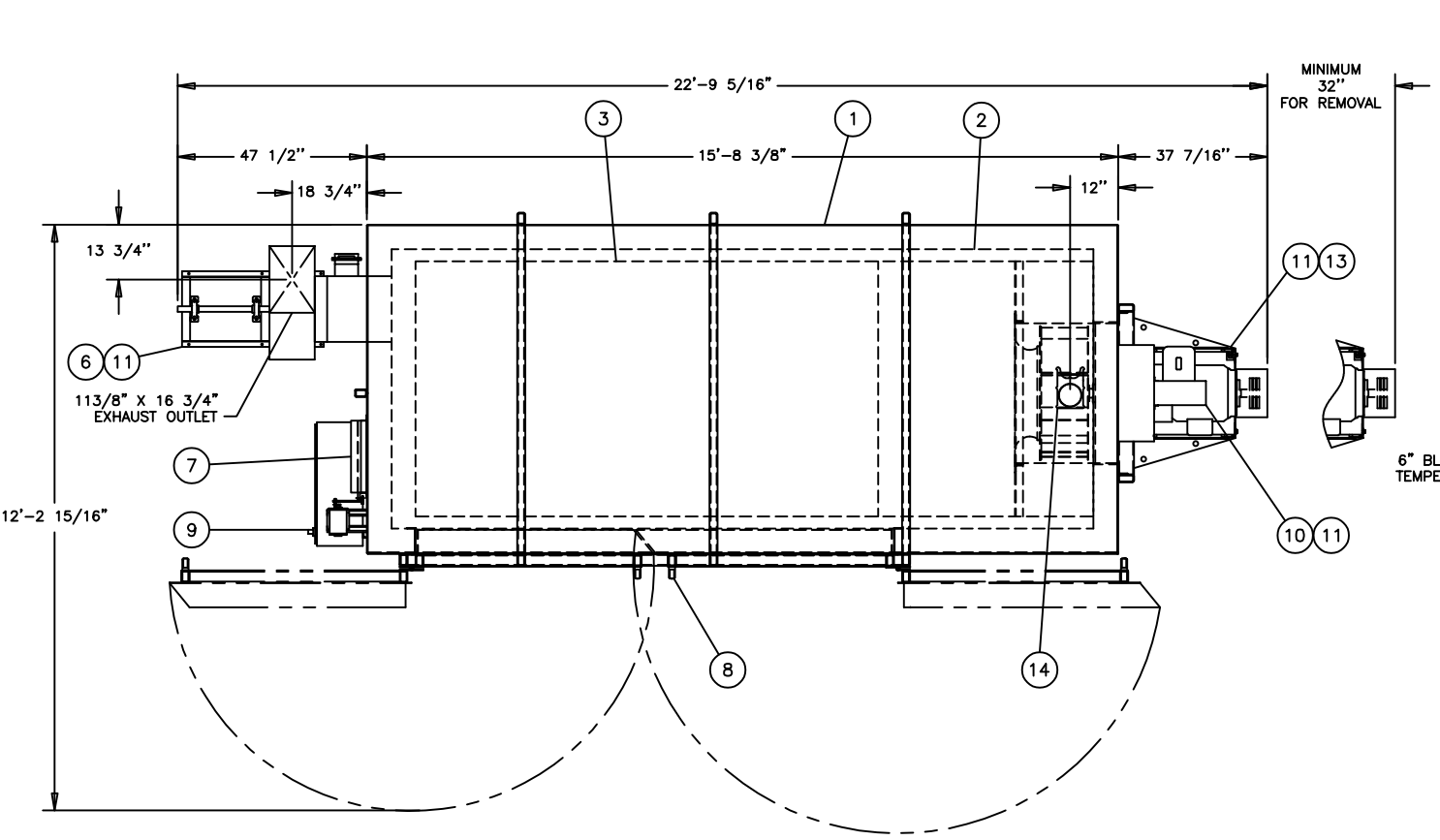
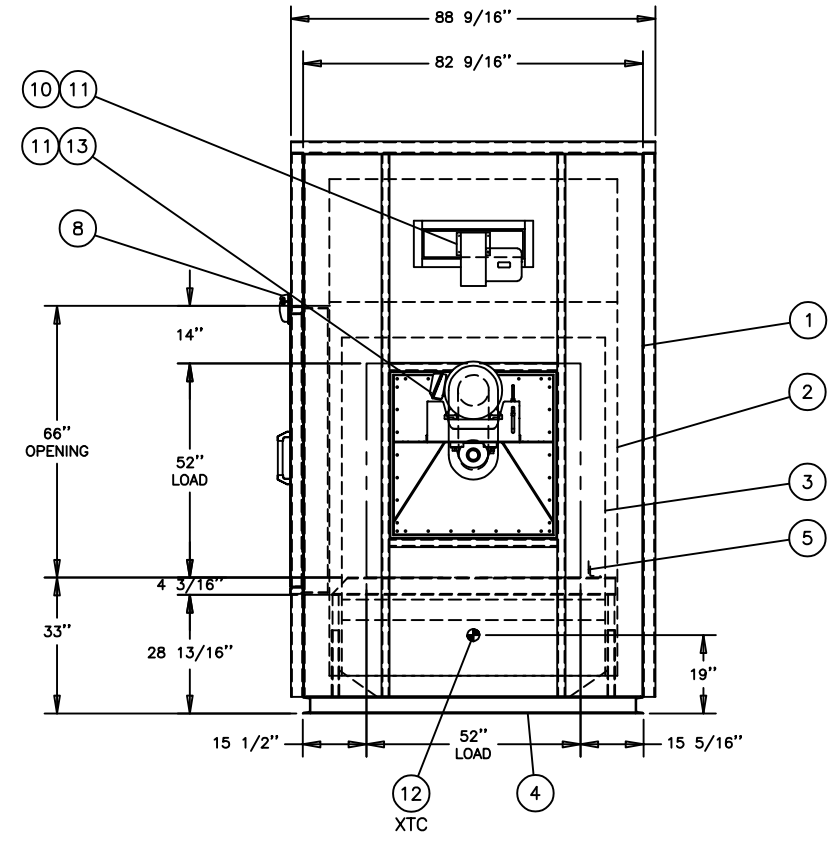
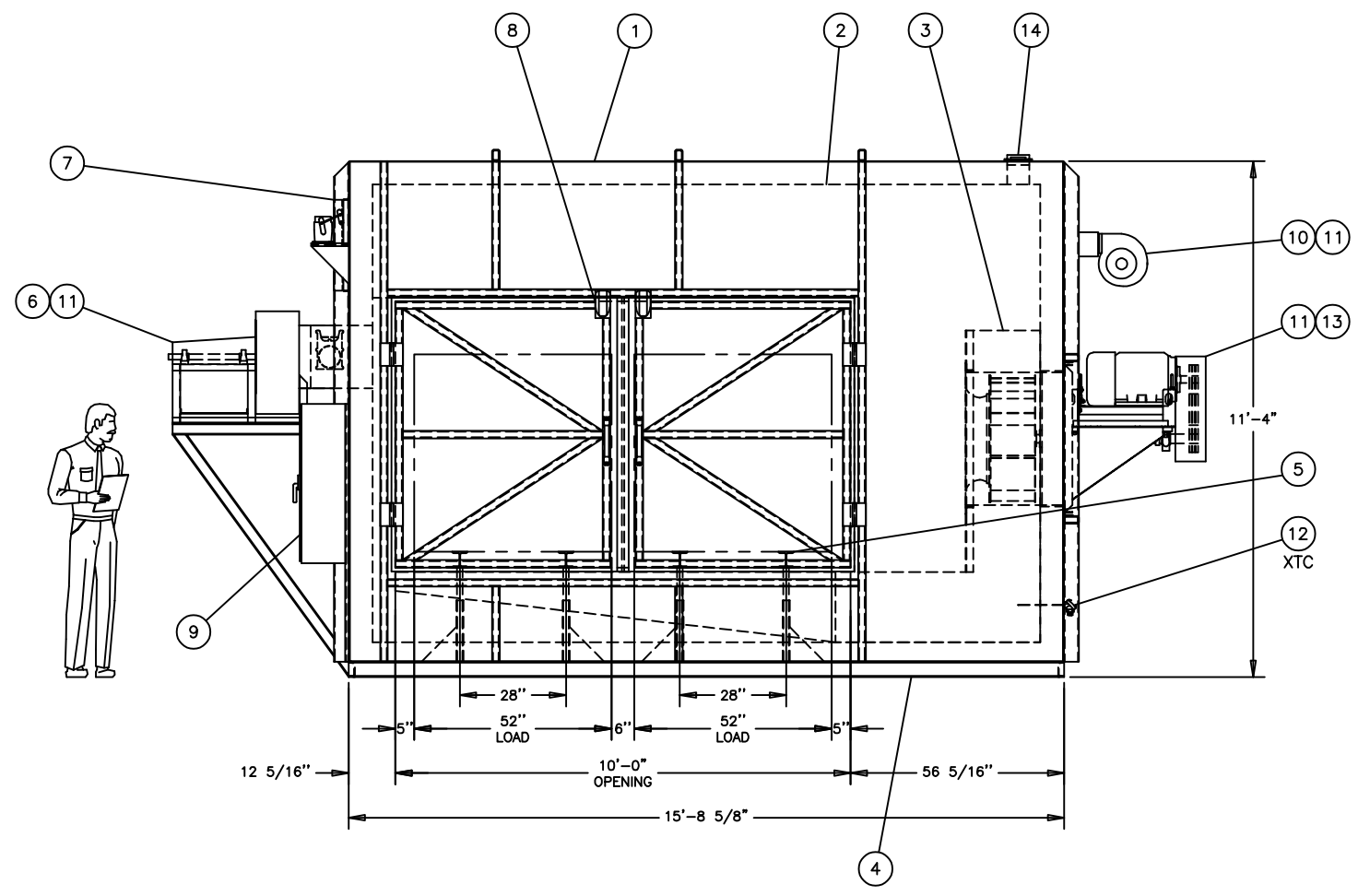


THIS DRAWING, INCLUDING THE PRINCIPLE OF DESIGN, IS THE PROPERTY OF AND IS SUBMITTED BY WISCONSIN OVEN CORPORATION WITH THE AGREEMENT THAT IT IS NOT TO BE REPRODUCED, COPIED, OR LOANED, IN PART OR WHOLE. IT IS NOT TO BE USED IN ANY MANNER THAT MAY CONSTITUTE A DETRIMENT DIRECTLY OR INDIRECTLY TO WISCONSIN OVEN CORP. ACCEPTANCE OF THIS DRAWING WILL BE CONSIDERED AS AN AGREEMENT TO THE ABOVE.



- SPECIFICATIONS:**
- ELECTRICAL:** 480V/3PH/60Hz APPROX. 47 AMPS
 - FUEL:** NATURAL GAS @ 1-5 PSIG
1,600 SCFH @ 1,000 BTU/SCF
1,600,000 BTUH
 - RECIRCULATION:** 21,000 CFM @ 20 HP
 - EXHAUST:** 4,300 CFM @ 3 HP
 - TEMPERATURE:** 537°C (1,000°F) MAXIMUM
400°C (752°F) NORMAL
 - COMPRESSED AIR:** 80 PSI
 - LOADING:** 4,500# GROSS
 - PAINT COLOR:** OVEN-FEDERAL SAFETY BLUE
CONTROL PANEL-FEDERAL SAFETY BLUE
PIPING- NOT PAINTED
CONDUIT- NOT PAINTED
GUARDS- OSHA YELLOW

- NOTES:**
- WOC LARGE LOGO TO BE LOCATED ON CENTERLINE OF OVEN ABOVE PROFILE OPENING
 - TEMPERATURE UNIFORMITY: ±5°C @ 400°C
 - THIS OVEN IS NOT RATED FOR CLASS "A" OPERATION
 - SET THE EXHAUST BLOWER VARIABLE SPEED DRIVE FOR A MINIMUM EXHAUST FLOW OF 810 CFM.
 - PURGE TIME: 6 MINUTES
 - APPROXIMATE SHIPPING WEIGHT: 14,000 lbs
 - TRIM 2 1/2" FROM EXHAUST TEMPERING TEE



| QTY | ITEM | DESCRIPTION | PART NO. | DRW'G OR STD. NO. | GRP |
|-----|------|---|----------|-------------------|-----|
| | 20 | | | | |
| | 19 | | | | |
| | 18 | | | | |
| | 17 | | | | |
| | 16 | | | | |
| 2 | 15 | C 2" X 1" X 3/16" X 68" LG | 306 0008 | | |
| 1 | 14 | BLAST GATE, 6" | 311 0047 | | |
| 1 | 13 | RECIRCULATION BLOWER | | NYB 338 | |
| 2 | 12 | STANDARD THERMOCOUPLE MOUNTING (LOCATE CTC @ TESTING) | | 220-4-1813 | |
| 3 | 11 | STANDARD AIR FLOW SWITCH MOUNTING | | 220-4-1814 | |
| 1 | 10 | GAS PIPING, 160 AH | | 211-4-1606 | |
| 1 | 9 | POWER AND CONTROL WIRING | | 502-4-1556 | |
| 1 | 8 | BI-PARTING DOOR ASSEMBLY | | 203-4-2044 | |
| 1 | 7 | FRESH AIR INLET DAMPER, 18" X 24" | | AJAX | |
| 1 | 6 | EXHAUST BLOWER ASSEMBLY | | 241-4-1111 | |
| 1 | 5 | SKID HEARTH ASSEMBLY | | 240-4-1033 | |
| 1 | 4 | OVEN BASE ASSEMBLY | | 207-4-1674 | |
| 1 | 3 | SUPPLY DUCT ASSEMBLY | | 202-4-2729 | |
| 1 | 2 | INNER SHELL ASSEMBLY | | 213-4-1150 | |
| 1 | 1 | OUTER SHELL ASSEMBLY | | 201-4-1238 | |

| | | | | |
|----|--|-------------|----|--------|
| A | | AS RELEASED | NR | 3-7-03 |
| NO | | REVISION | BY | DATE |

WISCONSIN OVEN CORP.
EAST TROY, WISCONSIN 53120

GENERAL ASSEMBLY
BATCH 10/5.5/5.5-G10

REV. A

116-4-1038

SCALE 1/2"=1'-0" JOB NO CM08734

Page 1 of 1