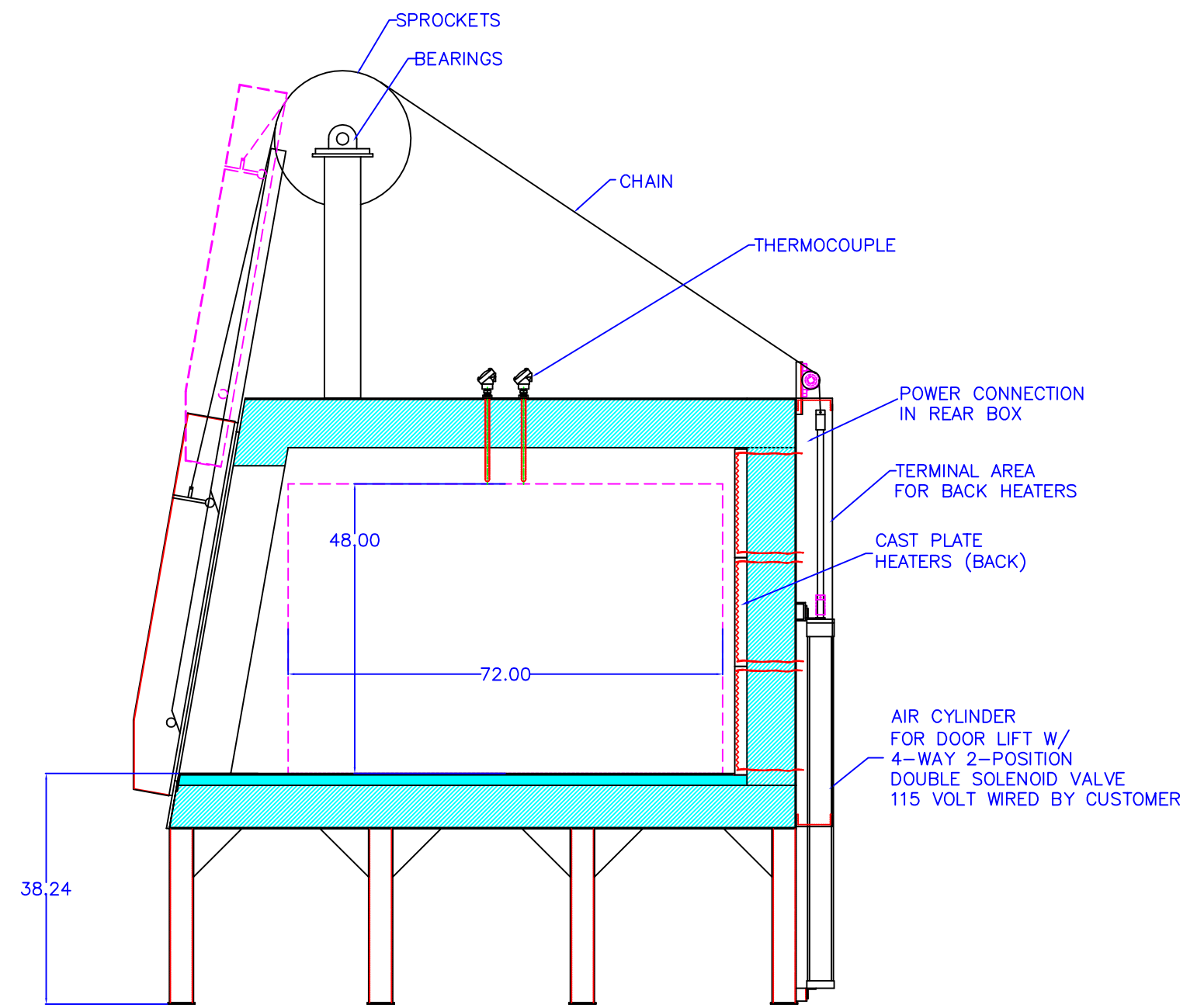


FRONT VIEW



SIDE VIEW

NOTES:

1. HEATED CHAMBER 48" W X 48" H X 72" D
2. MAX. TEMP: 2200°F
3. POWER: 180 KW ,480 VOLTS, 3 PH. 217 AMPS
4. PAINTED DIMENSO BLUE
5. FURNACE OUTER SHELL: 7 GA. HRS
6. CERAMIC FIBER & BRICK INSULATION
7. CONTROLS ARE MOUNTED IN A SEPARATE FREE STANDING CONTROL CABINET.

APPROVAL DRAWING

ALL DIMENSIONS ARE SUBJECT TO CHANGE TO MEET THE REQUIREMENTS OF THE CUSTOMER

THERMCRRAFT RESERVES THE RIGHT TO CHANGE DIMENSIONS FOR SAFE OPERATION.

LEGAL AGREEMENT OF DRAWING		APPROVAL	DATE	PRODUCT TYPE	MACH. METAL PARTS	METAL FAB. ASSYS	CERAMIC FIBER PRODUCT	CAST CERAMIC PRODUCT	P.O. Box 12037 3850 Overdale Road Winston-Salem, N.C. 27107	
DRN.	JBL	05/30/08		DECIMALS	XXX	+/- .01	+/- .06	+/- .08	+/- .12	BOX FURNACE FBM-48-48-72-1F-J9852/1A
CHK.				DECIMALS	XXX	+/- .008	+/- .082	+/- .090	+/- .085	JOB F9852/1
APP'D				ANGLES	+/- .05	+/- .5	+/- .5	+/- .5		DRAWING NO. J9852_1A
CORPORATION/COMPANY		FELKER BROS.		REMOVE ALL SURFS BREAK ALL CORNERS		UNLESS NOTED DIMENSIONAL TOLERANCES ARE AS SHOWN		REV. SHEET OF X X X XXX 00/00/00		