

ELECTRICAL: 480V/3PH/60Hz APPROX. 130 AMPS

ELECTRICAL: 480V/3PH/60Hz APPROX. 130 AMPS

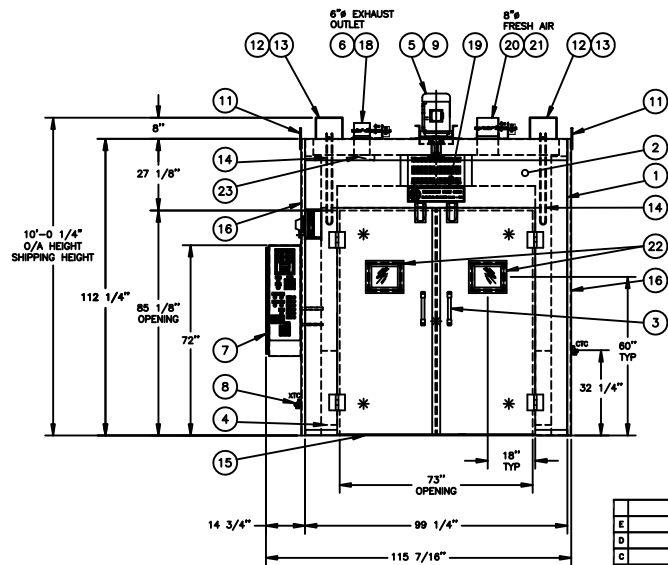
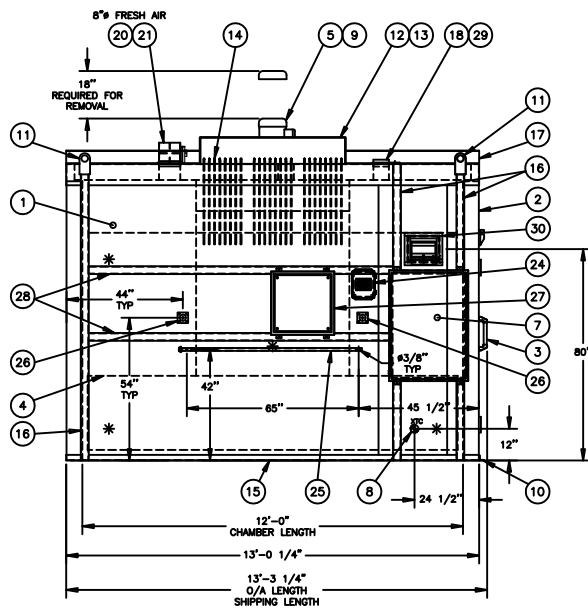
HEAT INPUT: 96 KW

RECIRCULATION: 8,600 CFM @ 10 HP

EXHAUST: MODULATED 6" OUTLET WITH MOTORIZED DAMPERS

TEMPERATURE: 343°C (650°F) MAXIMUM
185°C (365°F) NORMAL
31°C (55°F) ABOVE AMBIENT

PAINT COLOR: OVEN- FEDERAL SAFETY BLUE (341-0149)
CONTROL PANEL- MANUFACTURER'S GRAY
CONDUIT- NOT PAINTED
PIPING- NOT PAINTED
GUARDS- OSHA YELLOW




		32		
E	AS BUILT		MB	6/7/11
D	ROTATED LIGHT FIXTURE		MB	5/17/11
C	REVISED LIGHT FIXTURE		MB	5/16/11
B	CHANGED PER CUSTOMER REQUEST			3/25/11
A	AS RELEASED FOR APPROVAL		MB	3/24/11
NO	REVISION		BY	DATE

NOTES:

1. WOC LARGE LOGO TO BE LOCATED ON CENTERLINE OF OVEN ABOVE DOOR OPENING
2. SHIPPING NOTE:
REMOVE FLOOR FOR SHIPPING
APPROXIMATE SHIPPING WEIGHT: 6,000 lbs
SMALLEST DOOR OR PASSAGEWAY: 12' WIDE X 12' HIGH
3. EXHAUST NOTE:
THE EXHAUST STACK FROM EQUIPMENT TO ATMOSPHERE MUST BE DESIGNED WITH A MAXIMUM AIRFLOW RESISTANCE OF LESS THAN 3/4" WC, AND MUST BE SUPPORTED INDEPENDENTLY OF THE EXHAUST OUTLET.
4. CONTROL PANEL AND COMPUDES ARE FOR REFERENCE ONLY. SEE POWER AND CONTROL DRAWING FOR DIMENSIONS AND CONTROL LOCATIONS.
5. INSTALLATION NOTE:
THE EQUIPMENT MUST BE LEVELED AND SET PLUMB.
SHIMS CAN BE USED TO LEVEL THE EQUIPMENT. AFTER LEVELING, ANY GAPS ALONG THE BOTTOM MUST BE FILLED WITH INSULATION AND GROUTED TO PREVENT THE INFILTRATION OF COLD AIR OR THE SPILLAGE OF HOT AIR.
THE EQUIPMENT MUST BE LAGGED TO THE FOUNDATION WITH THE PROVIDED MOUNTING PADS. THE EQUIPMENT MUST BE LAGGED BEFORE REMOVING THE "SHIPPING BAR OR ANGLE" (THE BAR OR ANGLE ON THE OUTSIDE OF THE DOOR). FAILURE TO INSTALL THE EQUIPMENT AS NOTED WILL VOID THE WARRANTY.
IN ACCORDANCE WITH NFPA86, SPECIFICATION 5.1.4.1 STATES "FURNACES (OVENS) SHALL BE LOCATED WITH SPACE ABOVE AND ON ALL SIDES FOR INSPECTION AND MAINTENANCE PURPOSES". WISCONSIN OVEN CORPORATION RECOMMENDS 18" OF CLEARANCE, WHICH ALSO PROVIDES ROOM FOR HEAT DISSIPATION. INTERPRETATION AND COMPLIANCE WITH THIS REQUIREMENT ARE THE SOLE RESPONSIBILITY OF THE PURCHASER.
6. NINE (9) POINT TEMPERATURE UNIFORMITY TEST: $\pm 5^{\circ}\text{F}$ (AT 185°C (365°F)).
* INDICATES TEST POINT LOCATION
7. THIS OVEN IS NOT RATED FOR CLASS "A" OPERATION.
8. FLOOR NOTE:
12 GA ALUMINIZED FLOOR INCLUDED. OVEN MUST BE LOCATED ON A NON-COMBUSTIBLE FLOOR RATED FOR THE MAXIMUM TEMPERATURE OF THE OVEN.

ITEM	QTY	DESCRIPTION	LENGTH	WIDTH	PART NO.	DWG ON STD. NO.	GRP
1	1	PANEL ASSEMBLY				SWN-S-11280	5
2	1	OVEN FRONT ASSEMBLY			308-S-2277	308-S-2277	8
3	1	B PARTING DOOR ASSEMBLY			203-S-2164	5	
4	1	SUPPLY AND RETURN DUCT ASSEMBLY			EWN-13002454-1	EWN-13002454-1	5
5	1	STD DIRECT DRIVE BLOWER ASSEMBLY, 8800 CFM, 10HP			206-S-1257	4	
6	1	6" MODULATING EXHAUST WITH MOTORIZED DAMPERS			241-S-1160	1	
7	1	POWER AND CONTROL WIRING			EWN-S0002454-1	EWN-S0002454-1	5
8	2	STANDARD THERMOCOUPLE MOUNTING	XTC-12	LOCATE AT TESTING	S	220-4-1813	1
9	REF	AIR FLOW SWITCH					
10	1	STANDARD MOUNTING ANGLE			S	220-3-3443	1
11	4	STD LIFTING LUGS			809-0034		
12	2	TERMINAL GUARD ASSEMBLY				SWN-S-17005	6
13	2	HEAT ELEMENT PLATE				SWN-S-34089	12
14	48	HEATING ELEMENT, 2KW, 800 DEGREES F MAX			642-0017		
15	1	STD 42 GA FLOOR DEGRASS				SWN-4-32056	19
16	5	CHANNEL STEEL, C ₃ @ 4.18X17.2 X267	112	1/8	306-0004	CORE	
17	12	CHANNEL STEEL, C ₃ @ 4.18X17.2 X267	156		306-0009		
18	2	SHEET, AL20, 30GA, .030 @ 4.18X17.2 X267	139	1/4	301-0039	ROLL TO 6'0" X 12' UP TYP	
19	1	WOC LOGO			343-0001		
20	1	8" MOTORIZED FRESH AIR OUTLET				241-X02454-1	1
21	1	SHEET, AL20, 30GA, .030 @ 4.18X17.2 X267				ROLL TO 6'0" X 12' UP TYP	
22	1	STD 8" 1.31" WINDW ASSEMBLY	25	3/4	301-0019	220-S-3636	3
23	1	STD 8" STD SCOP ASSEMBLY				220-S-2390	2
24	1	12 POINT TYPE "J" TC JACK PANEL				220-S-3630	2
25	REF	VACUUM PIPING ASSEMBLY					
26	2	PFT, B, CAP. 1"	8	1/2	211-0046		
27	REF	COMPUADS					
28	2	CHANNEL STEEL, C ₃ @ 4.18X17.2 X267	115	1/8	306-0004	LOCATE AT ASSEMBLY	
29	1	BLASTGATE, 6" FULL			211-0047		
30	1	HIGH TEMPERATURE LIGHT ASSEMBLY				220-S-3634	5

 WISCONSIN OVEN CORP. EAST TROY, WISCONSIN 53120	
GENERAL ASSEMBLY EWN-612-7E6.5	
REV. E	
DRAWN BY MB CHK'D BY JNL SCALE 1/2"=1'-0"	DATE 3/21/11 DATE 3/22/11 JOB NO 03245A
DWG. NO. EWN-10X03245A-1	