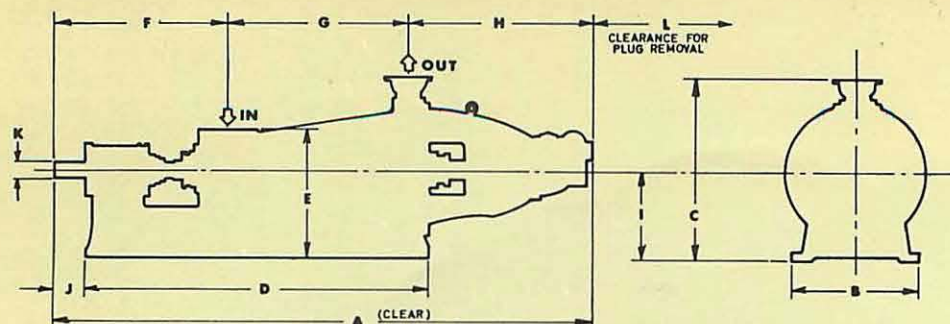


JONES FIBREMASTER II CONICAL REFINERS

The Jones Fibremaster II is a rugged, precision-engineered conical refiner. Design features are incorporated to provide dependable and highly efficient processing of stocks, ranging from fine grades to rough board stock. Construction of the unit permits plug removal without disconnecting stock piping. The thrust bearing is tapered roller and the radial bearing is spherical roller, self-aligning, antifriction type. Bearings and housings are designed so that they do not have to be disassembled when the plug is removed for chipping or refilling. Plug position adjustment is accomplished through a worm gear mechanism which has an external position indicator and scale. The unit is available with manual or automatic Accruset adjustment, in standard and corrosion-resistant models. A complete line of plug and shell fillings allows selection of the correct combination for any application.

JONES FIBREMASTER II REFINER



GENERAL DIMENSIONS (not to be used for construction)* (all values in inches)

INLET	OUTLET	A	B	C	D	E	F	G	H	I	J	K	L
10 Flg. Pad	8 Flange	146	32	48.6	92.5	34.5	47	48	50.8	24	8.2	4.375	100

SPECIFICATIONS

Capacity Range	25-150 tpd
Connected Power Range	200-350 hp
Speed Range	450-750 rpm
Floor Space Required	146" x 32"
Shipping Weight	9,100 lb
Floor Load	432 psf
Maximum Stock Pressure	100 psi
WK ² (for motor selection)	800 lb ft ²

MODEL	2415 STANDARD	2115 STANDARD	2615 CORROSION RESISTANT	2315 CORROSION RESISTANT
Plug	Adapta Plug, Alloy Iron Dynamically Balanced	Adapta Plug, Alloy Iron Dynamically Balanced	Adapta Plug, Alloy Iron Dynamically Balanced	Adapta Plug, Alloy Iron Dynamically Balanced
Plug End Plates	304Stainless Steel	304Stainless Steel	304Stainless Steel	304Stainless Steel
Plug Shaft	Steel	Steel	Steel	Steel
Shaft Sleeves	304Stainless Steel	304Stainless Steel	304Stainless Steel	304Stainless Steel
Bearings	Radial End: Spherical Roller Thrust End: Tapered Roller	Radial End: Spherical Roller Thrust End: Tapered Roller	Radial End: Spherical Roller Thrust End: Tapered Roller	Radial End: Spherical Roller Thrust End: Tapered Roller
Bearing Lubrication	Oil Bath	Oil Bath	Oil Bath	Oil Bath
Coupling	Full Travel	Full Travel	Full Travel	Full Travel
Plug Adjust- ment	Accruset Handwheel	Accruset Gearmotor	Accruset Handwheel	Accruset Gearmotor
Lining	None	None	Rubber where exposed to stock	Rubber where exposed to stock
Packing Box	Water Lubricated Cast Iron	Water Lubricated Cast Iron	Water Lubricated Rubber Lined	Water Lubricated Rubber Lined

Each model includes the complete machine, less motor, motor base and filling.

OPTIONAL EQUIPMENT

Fillings are available in the following types: (others on request)

Plug: Adapta (1/8", 3/16", 1/4", 5/16", 3/8"), Lava
Shell: Fulbar (1/8", 3/16", 1/4", 3/8"), Lava, Bidwell

Motor Base: Fabricated steel, connected

Accruset Controls are available in the following types:

Remote Manual, Watt Sensitive Recording, Watt Sensitive Indicating, Delta-T



JONES

DIVISION, BELOIT CORPORATION

PITTSFIELD, MASSACHUSETTS, 01201, U.S.A.