



MK MARTIN

2025 DISTRIBUTOR
PRICE BOOK
UNITED STATES



LIVING COUNTRY

EQUIPMENT FOR RURAL PROPERTY CARE

7 YEAR
WARRANTY

New Additions to Our Lineup



FIELD ROLLER

- Working width of 34 feet, 36 feet, 41 feet and 46 feet
- 36 inch drum diameter
- Half inch wall thickness for extra durability
- Weight per foot ranging from 475 lbs to 453 lbs
- Narrow transport width of 164"
- Forward fold design allows for quick setup and fold up

See Page 55



ROTARY SWEEPERS

- Engine powered and hydraulic powered options
- Skidsteer and loader mounting options
- 60 inch sweeping width
- 30 degree sweeping angle
- Hydraulic and electric angling options
- 7 Year consumer warranty

See Page 33



54" ROTARY CUTTER

See Page 19



54" 3PH BOX BLADE

See Page 34



48" LANDSCAPE RAKE

See Page 42



landforce
MKMARTIN

MK Martin has developed a strategic partnership with Landforce Agricultural Products. Through this partnership, MK Martin is able to offer exclusive distribution of all Landforce products. Landforce is committed to manufacturing quality harvesting, seeding and land preparation equipment.

See Page 61

TABLE OF CONTENTS



Snowblowers

Page 01



Loader Mounts & Power Packs

Page 11



Self Powered Snow Throwers

Page 13



Commercial Snowblowers

Page 15



3PH Rotary Cutters

Page 19



Rotary Cutters - Wing

Page 25



Skidsteer Rotary Cutters

Page 26



Extreme Duty Brush Cutters

Page 27



Finishing Mowers

Page 29



Axis Tool Arm

Page 30



Trail/UTV Mowers

Page 31



Lawn Sweepers

Page 32



Rotary Sweepers

Page 33



3PH Box Blades

Page 34



Grader Blades

Page 35



Land Levelers

Page 38



Grader Levelers

Page 39



Land Planes

Page 41



Landscape Rakes

Page 42



Cultivators

Page 42



Track Curry

Page 43



Rotary Tillers

Page 45



Garden Hillers

Page 47



Dump Boxes

Page 48



Weight Boxes

Page 48



Trailer Backhoe

Page 49



Gravity Boxes

Page 51



Field Roller

Page 55



Implement Caddy

Page 58



LandForce Products

Page 61

Single Auger Snowblowers



SPECIFICATIONS

Models	SB48	SB54	SB60
HP (Rec.)	12 HP	15 HP	20 HP
Cutting Width	48"	54"	60"
Cutting Edge	¼ x 1-½"	3/8 x 1"	3/8 x 1"
Auger Diam.	12"	14"	14"
Fan Diam.	19"	21"	21"
Chute Diam.	7"	8"	8"
Chute Rotation (Man/Hyd)		Select Option	
Chute Deflector	Manual	Manual Standard/ Hydraulic Option (see pg. 18)	
Main Body Height	22.5"	25"	25"
3PH Mount	Cat. 1	Cat. 1	Cat. 1
Weight (LBS.)	266	366	396
List Price (manual rotator)	\$4,025.00	\$4,170.00	\$4,345.00
with Hydraulic Rotator	\$4,755.00	\$4,900.00	\$5,075.00
with Electric Rotator	\$5,605.00	\$5,750.00	\$5,925.00



FEATURES

- 7 year limited warranty
- High tensile steel fighting
- 3PH quick attach compatible
- 5 blade fan/impeller
- Manual chute deflector

OPTIONS

- Hydraulic rotators (all models)
- Manual rotators optional on all models
- Hydraulic chute deflector

WING KITS

- Fits SB54, SB60, SB68, and SB72
- 18" tall. Made with 10 gauge steel
- Increases path 2" per side

Part #	List Price
55399	\$95.00



SPECIFICATIONS

Models	SB68	SB72	SB78	SB87	SB97
HP (Rec.)	30 HP	35 HP	50 HP	60 HP	75 HP
Cutting Width	68"	72"	78"	87"	97"
Cutting Edge	3/8 x 1	3/8 x 1	1/2 x 1-1/2	1/2 x 2	1/2 x 2
Auger Diam.	14"	14"	15"	19"	19"
Fan Diam.	21"	21"	23"	27"	27"
Chute Diam.	10"	10"	10"	12"	12"
Chute Rotation (Man/Hyd)	Select Option				
Chute Deflector	Manual Standard/ Hydraulic Option (see pg. 18)				
Main Body Height	25"	25"	29"	36"	36"
3PH Mount	Cat. 1	Cat. 1	Cat. 1 & 2	Cat. 2	Cat. 2
Weight (LBS.)	506	540	748	1,034	1,106

List Price (no rotator)	\$4,885.00	\$4,985.00	\$6,340.00	\$7,305.00	\$7,705.00
with Manual Rotator	\$5,105.00	\$5,205.00	\$6,560.00	\$7,525.00	\$7,925.00
with Hydraulic Rotator	\$5,615.00	\$5,715.00	\$7,070.00	\$8,035.00	\$8,435.00
with Electric Rotator	\$6,465.00	\$6,565.00	\$7,920.00	\$8,885.00	\$9,285.00

Double Auger Snowblowers

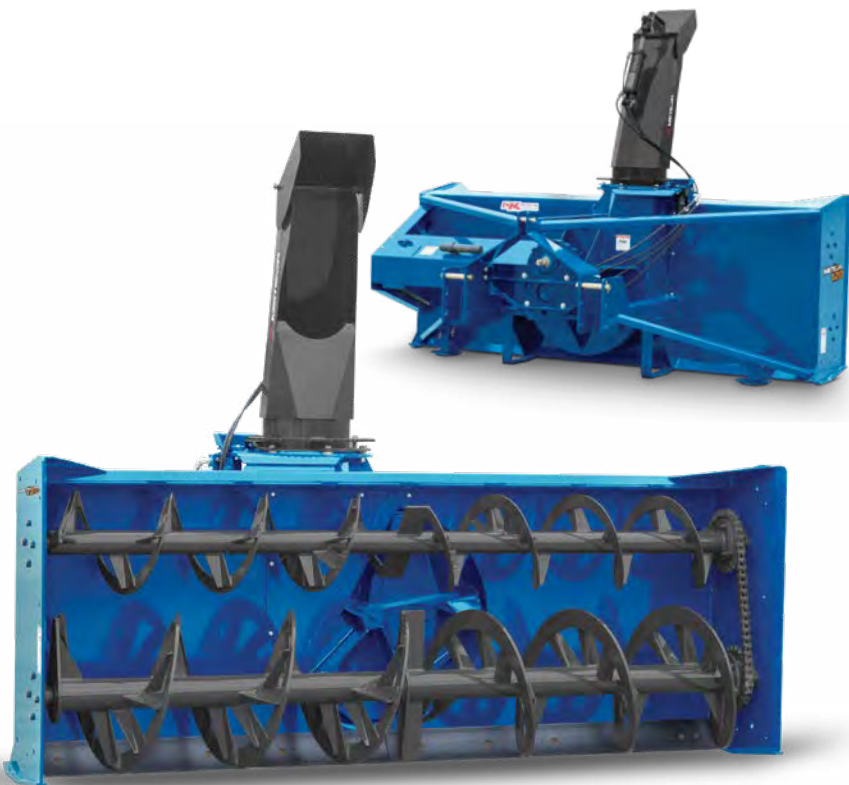


FEATURES

- 5 Blade impeller
- 7 year limited warranty
- High tensile steel lighting on top and bottom augers
- Cat. 2 - 3PH on model SB87D
- Cat. 2 & Cat. 3 on SB97D-SB120D
- Hydraulic chute rotator standard (SB97D - SB120D)
- Manual chute deflector on all models
- Skid shoes

OPTIONS

- Optional hydraulic chute deflector on all models
- Optional 1000 RPM adapter (SB97D - SB120D)



1000 RPM PTO KIT

Available for 97D, 108D and 120D models, this kit allows larger tractors to run at 1000 RPM PTO.

The 1000 RPM Kit also raises the input shaft to allow the PTO shaft to run at a lesser angle on larger tractors increasing the efficiency and life of the driveline components. The reduction box allows you to reverse the rotation so you can mount a regular snow blower to the front of a tractor.

PTO shaft not included.



Part #	List Price
SB97/1081000	\$3,875.00
SB1201000	\$4,195.00

SPECIFICATIONS

Models	SB87D	SB97D	SB108D	SB120D
Opt. 1000 RPM	-	Yes	Yes	Yes
HP (Rec.)	60 HP	100 HP	125 HP	200 HP
Cutting Width	87"	97"	108"	120"
Cutting Edge	½ x 2	½ X 6*	½ x 6*	½ x 6*
Auger Diam.	15" (x2)	15" (x1) 19" (x1)	15" (x1) 19" (x1)	15" (x1) 23" (x1)
Fan Diam.	27"	32"	32"	36"
Chute Diam.	12"	13"	13"	13"
Chute Rotation (Man/Hyd)	Selection Req. (Pg. 13)		Hydraulic Standard	
Chute Deflector (Man/Hyd)	Manual Deflector Standard/Hydraulic Option Pg.18			
Main Body Height	36"	43"	43"	47"
3PH Mount	Cat. 2	Cat. 2 & 3	Cat. 2 & 3	Cat. 2 & 3
Weight (LBS.)	1,161	1,900	1,980	3,010
Tube	3 ½" OD	4 ½" OD HEAVY WALL	4 ½" OD HEAVY WALL	4 ½" OD HEAVY WALL
Flighting	5/16 x 2 ¼	5/16 x 2-¼	5/16 x 2-¼	½ x 3
Roller Chain	#60 Heavy	#80	#80	#100
Fan Depth	10"	12"	12"	12"
Auger Drive Shaft	1 ¼"	1-¾"	1-¾"	1-¾"
Fan Output Shaft	40mm	2"	2"	2 ½"

List Price	\$8635.00	SB97D	\$12,645.00	SB108D	\$13,195.00	SB120D	\$26,325.00
		SB97D 175	\$13,245.00	SB108D175	\$14,195.00	SB120DF1.75	\$32,605.00
		SB97DF1.75	\$16,965.00	SB108DF1.75	\$17,800.00	SB120DF	\$31,545.00
		SB97DF	\$16,970.00	SB108DF	\$17,690.00	SB120DF Truck	\$40,765.00

Pull Type Snowblowers - Performance Series



MK Martin has completely redesigned the Pull Type Tractor Snowblower. Most notably with the redesign, the new Pull Type blower now cleans tight to the garage door, with no need for an additional back drag system. Connecting to your tractor's 3PH, the inverted snowblower allows you to drive straight forward pulling the blower instead of backing into the snow. Easier on your neck, the pull type blower is ideal for quickly clearing driveways and laneways.

TIVAR WEAR PARTS

Tivar is a wear resistant plastic that replaces steel cutting edges and bolts onto the skid shoes.

Optional on Pull Type models, the tivar is gentler when clearing, ideal for interlocking brick and decorative stone.



Skid Shoe

Cutting Edge

Part #	Tivar Kit	List Price
SB54PTTK	Cutting Edge & Skid Shoes	\$655.00
SB60PTTK	Cutting Edge & Skid Shoes	\$675.00
SB68PTTK	Cutting Edge & Skid Shoes	\$765.00
SB72PTTK	Cutting Edge & Skid Shoes	\$870.00
SB78PTTK	Cutting Edge & Skid Shoes	\$880.00
SB87PTTK	Cutting Edge & Skid Shoes	\$895.00
SB97PTTK	Cutting Edge & Skid Shoes	\$940.00



FEATURES

- Cleans tight to the garage door
- 5 blade impeller
- 7 year limited warranty
- High tensile steel flighting
- Multi-hinged deflector (SB68P/T – SB97P/T)

OPTIONS

- Hydraulic and electric chute rotators
- Hydraulic chute deflectors
- Tivar contact surfaces

SPECIFICATIONS

Models	SB54PT-P	SB60PT-P	SB68PT-P	SB72PT-P	SB78PT-P	SB87PT-P	SB97PT-P
HP (Rec.)	25 HP	25 HP	35 HP	35 HP	50 HP	60 HP	60 HP
Cutting Width	54"	60"	68"	72"	78"	87"	97"
Cutting Edge	Bolt On (½ x 4)						
Auger Diam.	14"	14"	14"	14"	15"	15"	15"
Fan Diam.	18"	18"	21"	21"	23"	27"	27"
Chute Diam.	8"	8"	10"	10"	10"	12"	12"
Chute Rotation	Must select either Hydraulic (opt.) or Electric (opt.)						
Chute Deflector		Manual Std./Opt. 6" cyl.			Manual Std./Opt. 8" cyl.		
Double Hood Deflector	N/A	N/A	Std.	Std.	Std.	Std.	Std.
Main Body Height	23"	23"	23"	23"	26"	28"	28"
3PH Mount	Cat. 1	Cat. 1	Cat. 1	Cat. 1	Cat. 1 & 2	Cat. 2	Cat. 2
Weight (LBS.)	462	495	671	685	900	1,175	1,260
Tube Size	2 3/8" OD	2 3/8" OD	2 3/8" OD	2 3/8" OD	3 ½" OD	3 ½" OD	3 ½" OD
Flighting Size	¼ x 2 ¼	¼ x 2 ¼	¼ x 2 ¼	¼ x 2 ¼	¼ x 2 ¼	5/16 x 2 ¼	5/16 x 2 ¼
Roller Chain Drive	# 50	# 50	# 60 Heavy	# 60 Heavy	# 60 Heavy	# 60 Heavy	# 60 Heavy
Fan Depth	5"	5"	7"	7"	8"	10"	10"
Blades Per Fan	5	5	5	5	5	5	5
Auger Drive Shaft Size	1"	1"	1 ¼"	1 ¼"	1 ¼"	1 ¼"	1 ¼"
Fan Output Shaft Size	1 3/8"	1 3/8"	1 3/8"	1 3/8"	40mm	40mm	40mm
List Price (no rotator)	\$6,585.00	\$6,870.00	\$7,655.00	\$8,040.00	\$9,235.00	\$11,495.00	\$11,985.00
with Hydraulic Rotator	\$7,315.00	\$7,600.00	\$8,385.00	\$8,770.00	\$9,965.00	\$12,225.00	\$12,715.00
with Electric Rotator	\$8,165.00	\$8,450.00	\$9,235.00	\$9,620.00	\$10,815.00	\$13,075.00	\$13,565.00

Pull Type Snowblowers



SPECIFICATIONS

Models	SB54 P/T	SB60 P/T	SB68 P/T	SB72 P/T	SB78 P/T	SB87 P/T	SB97 P/T
HP (Rec.)	25 HP	25 HP	35 HP	35 HP	50 HP	60 HP	60 HP
Cutting Width	54"	60"	68"	72"	78"	87"	97"
Cutting Edge	Bolt On (1/2 x 4)						
Auger Diam.	14"	14"	14"	14"	15"	19"	19"
Fan Diam.	18"	18"	21"	21"	23"	27"	27"
Chute Diam.	8"	8"	10"	10"	10"	12"	12"
Chute Rotation	Must select either Manual (opt.) or Hydraulic (opt.) or Electric (opt.)						
Chute Deflector	Manual Std./Opt. 6" cyl.			Manual Std./Opt. 8" cyl.			
Double Hood Deflector	N/A	N/A	Std.	Std.	Std.	Std.	Std.
Main Body Height	25"	25"	25"	25"	28"	32-1/2"	32-1/2"
3PH Mount	Cat. 1	Cat. 1	Cat. 1	Cat. 1	Cat. 1 & 2	Cat. 2	Cat. 2
Weight (LBS.)	462	495	671	685	900	1,175	1,225
Tube Size	2 3/8" OD	2 3/8" OD	2 3/8" OD	2 3/8" OD	3 1/2" OD	3 1/2" OD	3 1/2" OD
Flighting Size	1/4 x 2 1/4	1/4 x 2 1/4	1/4 x 2 1/4	1/4 x 2 1/4	1/4 x 2 1/4	5/16 x 2 1/4	5/16 x 2 1/4
Roller Chain Drive	# 50	# 50	# 60 Heavy	# 60 Heavy	# 60 Heavy	# 60 Heavy	# 60 Heavy
Fan Depth	5"	5"	7"	7"	8"	10"	10"
Blades Per Fan	5	5	5	5	5	5	5
Auger Drive Shaft Size	1"	1"	1 1/4"	1 1/4"	1 1/4"	1 1/4"	1 1/4"
Fan Output Shaft Size	1 3/8"	1 3/8"	1 3/8"	1 3/8"	40mm	40mm	40mm
List Price (no rotator)	\$5,955.00	\$6,155.00	\$6,815.00	\$7,105.00	\$8,250.00	\$10,505.00	\$10,995.00
with Manual Rotator	\$6,175.00	\$6,375.00	\$7,035.00	\$7,325.00	\$8,470.00	\$10,725.00	\$11,215.00
with Hydraulic Rotator	\$6,685.00	\$6,885.00	\$7,545.00	\$7,835.00	\$8,980.00	\$11,235.00	\$11,725.00
with Electric Rotator	\$7,535.00	\$7,735.00	\$8,395.00	\$8,685.00	\$9,830.00	\$12,085.00	\$12,575.00



FEATURES

- 5 blade impeller
- 7 year limited warranty
- High tensile steel flighting
- Standard manual chute deflector (all)
- Multi-hinged deflector (SB68P/T – SB97P/T)

OPTIONS

- Hydraulic, manual and electric chute rotators
- Hydraulic chute deflectors
- Back drag (manual or hydraulic)
- Tivar contact surfaces

BACK DRAG

Optional back drags are manual chain adjustment, and can be upgraded to a hydraulic option for 68" and wider models.



TIVAR WEAR PARTS

Tivar is a wear resistant plastic that replaces steel cutting edges and bolts onto the skid shoes.

Optional on Pull Type models, the tivar is gentler when clearing, ideal for interlocking brick and decorative stone.



Skid Shoe

Cutting Edge

WING KITS

- 18" tall. Made with 10 gauge steel
- Increases path 2" per side

Part #		List Price
60962	Fits SB54, SB60, SB68, SB72	\$92.00
60963	Fits SB78, SB87, SB97	\$125.00



Back Drag	Lift Type	List Price
SB54PTRB	Man.	\$975.00
SB60PTRB	Man.	\$1,080.00
SB68PTRB17	Man. / Hyd.	\$1,245.00
SB72PTRB	Man. / Hyd.	\$1,360.00
SB78PTRB17	Man. / Hyd.	\$1,470.00
SB87PTRB17	Man. / Hyd.	\$1,605.00
SB97PTRB	Man. / Hyd.	\$1,635.00
Optional Hydraulic Kit (fits SB68PT - SB97PT)		
SBPTRBH17		\$1,115.00

Part #	Tivar Kit	List Price
SB54PTTK	Cutting Edge & Skid Shoes	\$655.00
SB60PTTK	Cutting Edge & Skid Shoes	\$675.00
SB68PTTK	Cutting Edge & Skid Shoes	\$765.00
SB72PTTK	Cutting Edge & Skid Shoes	\$870.00
SB78PTTK	Cutting Edge & Skid Shoes	\$880.00
SB87PTTK	Cutting Edge & Skid Shoes	\$895.00
SB97PTTK	Cutting Edge & Skid Shoes	\$940.00

Back Drag Part #	Tivar Kit	List Price
SB54PTBDBTK	Back Drag	\$585.00
SB60PTBDBTK	Back Drag	\$670.00
SB68PTBDBTK	Back Drag	\$730.00
SB72PTBDBTK	Back Drag	\$735.00
SB78PTBDBTK	Back Drag	\$780.00
SB87PTBDBTK	Back Drag	\$810.00
SB97PTBDBTK	Back Drag	\$790.00

Skidsteer Snowblowers



FEATURES

- Adjustable blower fan tolerance for increased performance
- Auger has new teeth
- New curved exit chute for a more direct stream
- 5 blade impeller
- Direct fan drive mounted
- Up To 4439 ft/min fan tip speed
- Pivoting hitch plate
- Hitch plate height adjustable
- Solid side plate construction for added strength and rigidity
- Offset chute for better operator vision
- Hydraulic line check valve allow overrun and prevents reverse rotation
- Solenoid valve feature allows for use of hydraulic rotator motor and hydraulic deflector

OPTIONS

- Hydraulic chute deflector
- Optional wiring kit adapters for skid loader control integration
- Optional multi hinge deflector
- Optional poly edge for skid shoes

SPECIFICATIONS

Models	SSB62	SSB66	SSB76	SSB86	SSB96					
Cutting Edge (Bolt-On)	½ x 4	½ x 4	½ x 4	½ x 4	½ x 4					
Cutting Width	62"	66"	76"	86"	96"					
Auger Tube	3 ½" Round									
Auger Flighting	5/16 x 2 ¼									
Auger Diam.	19"									
GPM (min)	14	14	14	23	33					
Mounting	Universal Skidsteer Attach									
Chute Rotation	Hydraulic									
Chute Diam.	10"									
Main Body Height	27 ½"									
Chute Deflector	Manual Std/Hydraulic Opt									
Fan Diam.	24"			26"						
Fan Depth	8"									
Weight (LBS.)	910	928	970	1000	1,085					
List Price	SSB62HYD-A	\$12,225.00	SSB66HYD-A	\$12,410.00	SSB76HYD-A	\$12,895.00	SSB86HYD-C	\$14,840.00	SSB96HYD-D	\$15,935.00
	SSB62HYD-B	\$12,225.00	SSB66HYD-B	\$12,410.00	SSB76HYD-B	\$12,895.00	SSB86HYD-C+	\$14,840.00		
	SSB62HYD-B+	\$12,225.00	SSB66HYD-B+	\$12,410.00	SSB76HYD-B+	\$12,895.00	SSB86HYD-D	\$14,950.00		
			SSB66HYD-C	\$12,550.00	SSB76HYD-C	\$14,640.00				
			SSB66HYD-C+	\$12,550.00	SSB76HYD-C+	\$14,640.00				
				SSB76HYD-D	\$14,735.00					

Flow Rates	HP*	Code
14-17 GPM	22	A
18-20 GPM	27	B
20-22 GPM	30	B+
23-26 GPM	35	C
27-33 GPM	43	C+
33-40 GPM	52	D

*HP calculated at 2500 PSI

Code "D" high flow package is recommended on the SSB 96.

HYDRAULIC DEFLECTOR KIT

Part #	Description	List Price
SSB75HD	Hydraulic Deflector Kit	\$495.00

WIRING KITS

Optional Wiring Kits	Description	List Price
SSBEWK 7-Bobcat	7 Pin Wire Kit	\$2,130.00
SSBEK 8Cat	8 pin wire kit	\$405.00
SSBEK 8 Terrex	8 Pin Wire Kit	\$405.00
SSBEK 14Gehl/Case/NH/JCB/Volvo	14 Pin Wire Kit	\$405.00
SSBEK 14JD	14 Pin Wire Kit	\$405.00
SSBEWK14 Kubota/Wacker Neuson	14 Pin Wire Kit	\$405.00

*Wacker Neuson standard & high flow

Loader Mount Snowblowers & Power Packs



SPECIFICATIONS

Models	SSB66	SSB76	SSB86
Cutting Edge (Bolt-On)	½ x 4	½ x 4	½ x 4
Cutting Width	66"	76"	86"
Auger Tube		3 ½" Round	
Auger Flighting		5/16 x 2 ¼	
Auger Diam.		19"	
GPM		30	
Mounting		Universal Skidsteer Attach	
Chute Rotation		Hydraulic	
Chute Diam.		10"	
Main Body Height		27 ½"	
Chute Deflector		Manual Std/Hydraulic Opt	
Fan Diam.	24"		26"
Fan Depth		8"	
Weight (LBS.)*	928	970	1000
With SBLMPP-30	\$23,370.00	\$23,960.00	\$24,085.00
With SBLMPPCS-30	\$26,960.00	\$27,550.00	\$27,675.00

* Weight includes snowblower only.



FEATURES

- Hydraulic Chute Rotation
- Hydraulic Chute Deflector

Available with the following quick tach:
(Must be specified at time of order)

- Universal skidsteer
- Euro (ALO)
- JD 440/540 combination

POWER PACKS

- 3PH Mount PTO
- 30 Gal. Capacity
- 2,500 PSI at 30 Gallons per Minute
- SBLMPP-30 can be run for up to 2-hours before cool down is required



Models	SBLMPP-30	SBLMPPCS-30
Recommended HP	40-60HP	40-60HP
Capacity (gallons)	30	30
Flow Rate (PSI)	30 GPM/2500 PSI	30 GPM/2500 PSI
Mount	3PH	3PH
Weight	535 LBS.	575 LBS.
Height	48"	48"
Width	39"	39"
Depth	30"	32"
Max Operating Temp. (°C)	2° C	30° C
Max Operating Time (hours)	2 Hour Duty Cycle	Full Duty Cycle
Cooling System Included	No	Yes
List Price	\$11,235.00	\$14,825.00

Self Powered Snow Throwers



FEATURES

For tractors and compact skid loaders without hydraulic remotes, MK Martin offers our self powered snow thrower.

While being easy to attach with no drive lines or hoses to worry about, the engine belt drives the shaft which transfers power to the rotor by a roller chain.

These self powered snow throwers are ideal for moving snow quickly with precision in mind. The flared body opening helps to cut snow and direct to the efficient rotor assembly.

SPECIFICATIONS

Model	S1054E	S1060E
Motor Type	Vanguard 14HP	Vanguard 14HP
Electric Start	12 Volt	12 Volt
Clutch	Electric (start/stop blower)	
Rotor	16" @ 750 RPM	
Hood Rotator	Electric	Electric
Hood Deflector	Manual	Manual
Cutting Edge	Bolt on 1/4" x 3-1/2"	
Overall Width	54"	60"
Overall Depth	36"	36"
Main Body Height	22.75"	22.75"
Weight	470 lbs.	545 lb.
List Price	\$13,320.00	\$13,675.00



WIRED REMOTE

The wired controller allows for remote starting and stopping of the rotor. Oversized buttons allows operators to make quick and accurate adjustment of the chute rotation.





FEATURES

- Design to Fit Most Leading UTV Models
- 14 Horsepower Vanguard Engine
- 54 Inch Cutting Width
- Built to the Same Standard as Meteor Snowblowers
- Universal Mount Plate
- Raised and Lowered Using UTV Winch



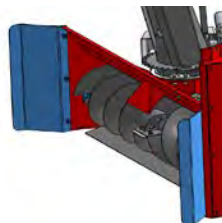
SPECIFICATIONS

Model	UTVST54
Cutting Width	54"
Motor Type	Vanguard 14HP
Manual	Pull start
Clutch	Manual belt
Rotor	9"
Hood Rotator	Electric
Hood Deflector	Manual
Cutting Edge	Bolt on 0.134" x 1-1/2"
Overall Width	56"
Overall Depth	22"
Main Body Height	16"
Weight	335 lbs.
List Price	\$6,695.00

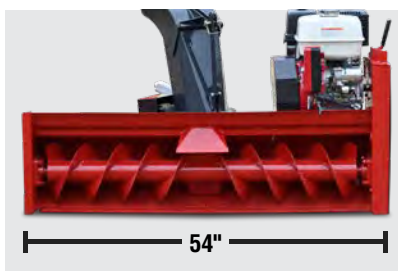
OPTIONAL WING KITS

Adds 6 inches to overall width

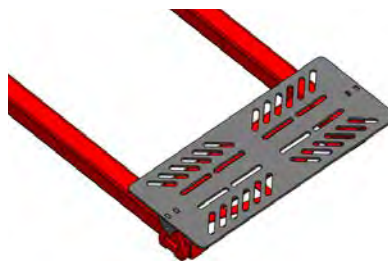
Part #	List Price
38845	\$95.00



54 INCH CUTTING WIDTH



UNIVERSAL UTV MOUNT



ELECTRIC HOOD ROTATOR



Commercial Sidewalk SnowThrower

SPECIFICATIONS

2000 Commercial Series Sidewalk SnowThrower - 540 RPM

Models	S2048	S2054	S2060
HP	25-55	25-55	25-55
Width	48"	54"	60"
Mount	CAT. 2	CAT. 2	CAT. 2
PTO Drive (RPM)	540	540	540
Stages	1	1	1
Rotor	24"	24"	24"
Oil Bath Chain	Std.	Std.	Std.
Cutting Edge	V-Edge with Trip	V-Edge with Trip	V-Edge with Trip
Skid Shoes	Carbide Shoes & Side Plates	Carbide Shoes & Side Plates	Carbide Shoes & Side Plates
Chute Rotator	Hyd.	Hyd.	Hyd.
Deflector Stages	2	2	2
Chute Deflector (Man/Hyd)	Hyd.	Hyd.	Hyd.
Weight	900 lbs.	1,120 lbs.	1,300 lbs.
List Price	\$15,885.00	\$16,125.00	16,305.00

2000 Commercial Series Sidewalk SnowThrower - 1000 RPM

Models	S2048/1000	S2054/1000	S2060/1000
HP	50-75	50-75	50-75
PTO Drive (RPM)	1000	1000	1000
List Price	\$17,105.00	\$17,250.00	\$17,450.00

2000 Commercial Series Hydraulic SnowThrower

Models	2054H	2062H
Hydraulic Flow	20-40 GPM	
List Price	\$16,635.00	\$16,920.00



FEATURES

- Carbide Skid Shoes & Side Plates
- Oil Bath Chain
- Spring Loaded Carbide Side Plates
- Frame Linkage
- V-Trip Cutting Edge
- Hydraulic Chute Rotator

OPTIONS

- Hydraulic Bank Cutters

24" ROTOR



2-STAGE DEFLECTOR



V TRIP CUTTER EDGE





FEATURES

- Hydraulic Chute Rotator
- Hydraulic 2-Stage Deflector
- 6-Blade Fan
- Dual Augers with Ribbon Flighting
- Adjustable Skid Shoes
- Skid Shoes & Side Plates Made with Hardox 450 Steel
- 1/2" x 6" Heat Treated Bolt-On Cutting Edge
- Oil Bath Chain

OPTIONS

- Fixed Bank Cutters
- Hydraulic Steering Bank Cutters
- Truck Loading Chute
- Work Light Kit

SPECIFICATIONS

Models	4097	4108	4120
HP (Rec.)	200	200	200
Cutting Width	97"	108"	120"
Main Body Height	47"	47"	47"
Mount	CAT. 2 & 3	CAT. 2 & 3	CAT. 2 & 3
Impeller (Fan)	36" - 3/8" Hardox 450		
Impeller Depth	12"	12"	12"
Impeller Blades	6	6	6
Impeller Output Shaft	2-1/2"	2-1/2"	2-1/2"
Rotating Housing	N/A	N/A	N/A
PTO Drive (RPM)	1,000	1,000	1,000
Stages	2	2	2
Rotor	Ribbon Flighting (Flight Notching Available)		
Rotor (Tube)	4-1/2" OD Heavy Wall		
Rotor (Flighting)	1/2" x 3" (Bottom) 5/16" x 2-1/4" (Top)		
Rotor (Diameter)	23" (Bottom) 15" (Top)		
Rotor (Drive Shaft)	1-3/4"	1-3/4"	1-3/4"
Roller Chain	#100	#100	#100
Cutting Edge	1/2" x 6" Heat Treated Bolt-On		
End Plates	3/8" Hardox 450 x 48" High		
Chute Diameter	13"	13"	13"
Chute Rotator	Hydraulic	Hydraulic	Hydraulic
Deflector Stages	2	2	2
Chute Deflector	Hydraulic	Hydraulic	Hydraulic
Work Light Kit	Standard (TL Models Only*)		
Weight (LBS.)	3,230	3,350	3,485
List Price	\$29,500.00	\$30,500.00	\$31,525.00

RH Models*	4097RH	4108RH	4120RH
Rotating Housing	Standard	Standard	Standard
Weight (LBS.)	3,490	3,610	3,745
List Price	\$32,500.00	\$33,500.00	\$34,900.00

* RH models have the same specs as the corresponding models above, however they include a rotating fan housing.



ROTATING FAN HOUSING FOR SIDE DISCHARGE

* Only on RH models

Steiner/Ventrac Snowblowers



FEATURES

- Designed to fit Steiner and Ventrac tractor
- Hydraulic chute rotation for smooth blowing
- Ideal for rural driveways and smaller commercial yards

SPECIFICATIONS

Models	SBVEN48	SBVEN54
Cutting width	48"	54"
Cutting Edge	3/8 x 1"	
Auger Diam.	14"	
Fan Diam.	21"	
Chute Diam.	8"	
Chute Rotation	Hyd.	
Chute Deflector	Manual	
Body Height	25"	
Drive	Belt drive	
Mount	Steiner/Ventrac	
Weight (LBS.)	475	488
List Price	\$7,280.00	\$7,750.00

BELT DRIVE



HYDRAULIC CHUTE ROTATE



STEINER/VENTRAC MOUNT





HYDRAULIC DEFLECTOR

Hydraulic chute deflector includes the cylinder and the hoses.



Part #	Applicable Models	List Price
SB68HD	Fits 54-72	\$495.00
SB78HD	Fits 78-120	\$495.00

MULTI-HINGED DEFLECTOR

Meteor's Multi-Hinged Deflector provides you with finer control over where your snow is blown. Cylinder not included.



Part #	Applicable Models	List Price
SB78MHD	Fits 78	\$725.00
SB87MHD	Fits 87-87D-97	\$780.00
SB108MHD	Fits 97D-120D	\$795.00

CHUTE ROTATOR

Meteor Snow Blower chute rotators come in manual (crank), hydraulic (orbital motor), and electric.



Manual

Part #	Description
SB48MR25	Fits 48" model
SB60MR25	Fits 54" and 60" models
SB68MR25	Fits 68" and 72" models
SB78MR25	Fits 78" models
SB87MR25	Fits 87s, 97s, 87D models
SB60PTMR25	Fits 60" Pull Type
SB68PTMR25	Fits 68" and 72" Pull Type
SB78PTMR25	Fits 78" Pull Type
SB87PTMR25	Fits 87" Pull Type
SB97PTMR25	Fits 97" Pull Type
List Price	\$220.00



Hydraulic

Part #	List Price
SBHR13	\$730.00

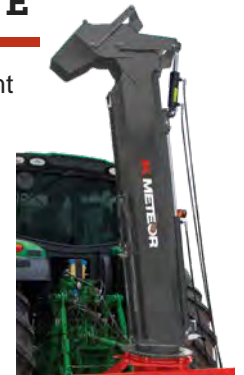


Electric

Part #	List Price
SBER13	\$1,580.00

TRUCK LOADING CHUTE

- Provides up to 40" of additional Height
- Hydraulic Rotation
- Hydraulic Multi-Hinged Deflector



Part #	Applicable Models	List Price
SB87TLC	87S, 97S, & 87D	\$4,695.00
SB108TLC	97D & 108D	\$6,395.00
SB120TLC	120D	\$6,395.00



3PH Rotary Cutters



FEATURES

- Maximum brush diameter 1"
- 7 year limited warranty
- Cat. 1 3PH
- Adjustable cutting height 2" – 10"
- Floating top link maintains cutting height
- Solid segmented wheels for no flat running
- 2 blade design
- Standard front and rear rubber guards
- Deck protection ring
- Fixed skid shoe

OPTIONS

- Light duty slip clutch for driveline protection
- Chain curtains

SPECIFICATIONS

Model	PRC48LD	PRC48	PRC54	PRC60	PRC66	PRC72	PRC72HD
Shipping Weight (LBS.)	320	380	430	500	560	625	635
3PH Mount	Cat. 1	Cat. 1	Cat. 1	Cat. 1	Cat. 1	Cat. 1	Cat. 1
Cutting Height	2" - 10"	2" - 10"	2" - 10"	2" - 10"	2" - 10"	2" - 10"	2" - 10"
Cutting Path	48"	48"	54"	60"	66"	72"	72"
Max Brush Diameter	1"	1"	1"	1"	1"	1"	1"
Tip Speed (Ft/Min)	13100	13100	14725	12462	13708	14955	14955
Wheels	16" (Air Filled)			16" (Segmented)			
Blades	½" x 3"	½" x 3"	½" x 3"	½" x 3"	½" x 3"	½" x 3"	½" x 3"
Tractor HP (min)	20	20	22	30	40	50	50
PTO RPM	540	540	540	540	540	540	540
Gearbox Rating	40	40	40	60*	60*	60*	75*
Deck	12 ga	12 ga	12 ga	12 ga	12 ga	12 ga	12 ga
Stump Jumper	Yes	Yes	Yes	Yes	Yes	Yes	Yes
Rubber Guard	Std.	Std.	Std.	Std.	Std.	Std.	Std.
Protection (Std./Opt.)	Shear Pin / Slip Clutch	Shear Pin / Slip Clutch	Shear Pin / Slip Clutch	Shear Pin / Slip Clutch	Shear Pin / Slip Clutch	Shear Pin / Slip Clutch	Slip Clutch (Std.)
List Price (Shear Pin)	PRC48LD \$2,850.00	PRC48 \$2,938.00	PRC54 \$2,980.00	PRC60 \$3,020.00	PRC66 \$3,365.00	PRC72 \$3,840.00	PRC72HD
List Price (Slip Clutch)	PRC48LDSC \$3,025.00	PRC48SC \$3,145.00	PRC54SC \$3,180.00	PRC60SC \$3,215.00	PRC66SC \$3,655.00	PRC72SC \$4,210.00	PRC72HDSC \$4,510.00

* Based on field performance



Chain Guards *For all 3PH Models.
Includes both front and back chains.*

Part # (Chain)	List Price
PRC48CHAIN	\$480.00
PRC60CHAIN	\$555.00
PRC66CHAIN	\$635.00
PRC72CHAIN	\$715.00



Slip Clutch

Part #	Description	List Price
PRCSC	Optional Light Duty Slip Clutch	\$475.00

3PH Rotary Cutters - 700 Series



FEATURES

- 7" Deck Height
- Maximum brush diameter 2"
- 7 year limited warranty
- Cat. 1 3PH
- Adjustable cutting height 1.5" – 13"
- Floating top link
- Solid segmented wheels
- 2 blade design with stump jumper
- Standard front and rear rubber guards
- Deck protection ring
- Stump jumper
- Fixed skid shoe

OPTIONS

- Light duty slip clutch for driveline protection
- Chain curtains

SPECIFICATIONS

Model	MKRC748	MKRC760	MKRC766	MKRC772	MKRC772HD	MKRC784HD
Cut Width	48"	60"	66"	72"	72"	84"
Weight (LBS.)	420	535	605	640	730	840
Hitch	Cat. 1 Quick Hitch Compatible					
Cutting Height	1.5" - 13" / 10 Positions					
Max Brush Diameter	2"					
Tip Speed (Ft/Min)	13100	12462	13708	14955	15260	17803
Wheels	16" Segmented					X2
Blades	1/2" x 3"					
Tractor HP (min)	22	30	40	50	50	60
PTO RPM	540 RPM	540 RPM	540 RPM	540 RPM		
Gearbox Rating *	40	60	60	60	75	75
Deck	10 ga	10 ga	10 ga	10 ga	10 ga	10 ga
Deck Height	7"	7"	7"	7"	7"	7"
Skirt Thickness	3/16"	3/16"	3/16"	3/16"	3/16"	3/16"
Stump Jumper	Yes (Round)	Yes (Round)	Yes (Round)	Yes (Round)		
Rubber Guard	Std.	Std.	Std.	Std.	Std.	Std.
Protection	Shear Pin	Shear Pin	Shear Pin	Shear Pin	Slip Clutch	Slip Clutch
List Price (Shear Pin)	MKRC748 \$3,055.00	MKRC760 \$3,290.00	MKRC766 \$3,655.00	MKRC772 \$4,150.00	N/A	N/A
List Price (Slip Clutch)	MKRC748SC \$3,295.00	MKRC760SC \$3,580.00	MKRC766SC \$3,940.00	MKRC772SC \$4,410.00	\$4,210.00	\$6,755.00

* Based on field performance



Chain Guards *For all 3PH Models. Includes both front and back chains.*

Part # (Chain)	List Price
PRC48CHAIN	\$480.00
PRC60CHAIN	\$555.00
PRC66CHAIN	\$635.00
PRC72CHAIN	\$715.00

Slip Clutch

Part #	Description	List Price
PRCSC	Optional Light Duty Slip Clutch	\$475.00

3PH Rotary Cutters Plus



FEATURES

- Maximum brush diameter 2"
- 7 year limited warranty
- Cat. 1 & Cat. 2 3PH
- Draw bar hitch (PRCPLUS120)
- Adjustable cutting height 2" – 10"
- Floating top link maintains cutting height
- Solid segmented wheels (PRCPLUS60 – PRCPLUS96)
- Pneumatic wheels (PRCPLUS120)
- 3 blade design with stump jumper
- Standard front and rear rubber guards
- Deck protection ring
- Slip clutch to protect the drive line
- Bolt on skid shoe

OPTIONS

- Chain curtains

Blade Assembly



Floating Top Link



Segmented Wheel



Slip Clutch



SPECIFICATIONS

Model	PRCPLUS60	PRCPLUS72	PRCPLUS84	PRCPLUS96	PRCPLUS120	PRCPLUS120-3PH
Shipping Weight (LBS.)	595	775	1045	1530	2320	2045
Hitch Type	Cat. 1 & 2 Quick Tach compatible				Draw Bar Hitch	Cat. 2
Cutting Height	2" - 10"	2" - 10"	2" - 10"	2" - 10"	2" - 10"	2" - 10"
Cutting Path	60"	72"	84"	96"	120"	120"
Max Brush Diameter	2"	2"	2"	2"	2"	2"
Tip Speed (Ft/Min)	12,462	15,260	17,803	16,500	14,500	14,500
Wheel Type (Qty.)	16" Segmented (1)	16" Segmented (1)	16" Segmented (2)	16" Segmented (2)	16" Pneumatic (2)	16" Pneumatic (2)
Blades	3 - 1/2" x 3"	3 - 1/2" x 3"	3 - 1/2" x 3"	3 - 1/2" x 3"	6 - 1/2" x 4"	6 - 1/2" x 4"
Tractor HP (min)	30-40	60	60	80	80	80
PTO RPM	540	540	540	540	540	540
Gearbox Rating *	75 HP	75 HP	90 HP	100 HP	120 HP	120 HP
Deck	3/16"	3/16"	3/16"	3/16"	9GA	9GA
Stump Jumper	Yes	Yes	Yes	Yes	Yes	Yes
Protection	Slip Clutch	Slip Clutch	Slip Clutch	Slip Clutch	Slip Clutch	Slip Clutch
List Price	\$4,415.00	\$5,380.00	\$7,570.00	\$11,515.00	\$18,775.00	\$15,390.00

* Based on field performance



CHAIN GUARDS

For all 3PH Models.
Includes both front and back chains.

Part # (Chain)	List Price
PRC60CHAIN	\$555.00
PRC72CHAIN	\$715.00
PRC84CHAIN	\$810.00
PRC96CHAIN	\$855.00
PRC120CHAIN	\$970.00

DRAW BAR KIT

For 84" & 96" models. Kit consists of components shown in black in this image; red components for illustration only.

Part #	List Price
PRCDB84-96	\$3,395.00



Rotary Cutters - Wing



* Photo shown with 2 pairs of walking tandem axles

OPTIONS

Part #	List Price
Walking Tandem Axle - one pair (4 wheels)	\$1,390.00
Solid Wheel	\$760.00

FEATURES

- 15' dual wing rotary cutter
- 4 heavy duty gearboxes, each covered with 7 year limited warranty
- Transport lock for each wing
- 1.5" diameter cutting capacity
- Each wing can float to conform to ground contours

SPECIFICATIONS

Model	PW180
Shipping Weight (LBS.)	4,400
3PH Mount	Draw Bar Hitch
Cutting Height	3"-15"
Cutting Path	180"
Max Brush Diameter	1.5"
Overall Width (Wings Down)	184"
Folded Width (Wings Up)	78"
Tip Speed (Ft/Min)	15,100 ft/min on Wings 14,850 ft/min on center
Wheels (Pneumatic)	21"
Blades	9 blades 1/2"x4"
Tractor HP (min)	75HP
PTO RPM	540
Gearbox Rating (Wing)	140 HP
Gearbox Rating (Center)	105 HP
Gearbox Rating (Divider)	87 HP
Deck	3/16"
Stump Jumper	Yes
Protection	Independent Slip Clutch on Each Spindle
Wing Float Range(degrees)	20 down and 33 up
List Price	\$35,175.00
with Walking Tandem Axle	\$36,565.00
with Solid Wheels	\$35,935.00



FEATURES

- Maximum brush diameter 2"
- 3 blade cutting assembly
- Integrated push bar
- Relief valve for protection
- Chain curtain
- Floating linkage allows the cutter to follow ground contour
- Deck protection ring

SPECIFICATIONS

Model	Description	Brush Diameter	Deck Thickness	Weight (LBS.)	List Price
PRCH60-A	60" Rotary Cutter	2"	3/16"	760	\$6,985.00
PRCH60-B	60" Rotary Cutter	2"	3/16"	760	\$6,985.00
PRCH60-B+	60" Rotary Cutter	2"	3/16"	760	\$6,985.00
PRCH72-A	72" Rotary Cutter	2"	3/16"	860	\$7,725.00
PRCH72-B	72" Rotary Cutter	2"	3/16"	860	\$7,725.00
PRCH72-B+	72" Rotary Cutter	2"	3/16"	860	\$7,725.00
PRCH72-C	72" Rotary Cutter	2"	3/16"	860	\$8,310.00
PRCH72-C+	72" Rotary Cutter	2"	3/16"	860	\$8,310.00
PRCH72-D	72" Rotary Cutter	2"	3/16"	860	\$8,595.00



Flow Rates	Pack. Codes
14-17 GPM	A
18-20 GPM	B
20-22 GPM	B+
23-26 GPM	C
27-33 GPM	C+
33-40 GPM	D

OPTIONAL BOLT-ON GAUGE WHEEL

- 16" segmented wheel
- 2"-9" wheel adjustment /5 holes

Part #	List Price
PRCH-WK	\$575.00



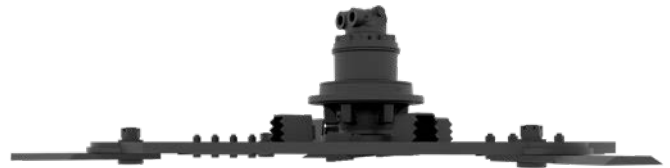
To ensure optimum performance, hydraulic output must match motor package.

Extreme Duty Brush Cutters



HEAVY DUTY 10" CUT CAPACITY

Easily power through dense brush, woody vegetation even 10 inch diameter trees across fields, forests and trails.



HEAVY DUTY 1" THICK ROTOR

78" diameter oversized rotor is manufactured using a 1" thick steel plate.



4 REPLACEABLE FLAIL KNIVES

Mounted on the rotor are 4 replaceable pivoting flail knives designed to deliver maximum centrifugal velocity and shear force on every rotation.



DIRECT MOUNTED MOTOR

The hydraulic radial piston direct mounted motor and heavy duty bearing assembly deliver tip speeds of up to 20,000 ft. per minute and produce powerful torque at lower speeds for continuous cutting and faster recovery.

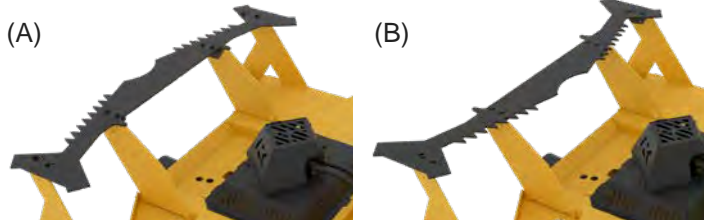
EXTREME DUTY

BRUSH CUTTER



FEATURES

- 78" Brush Cutter - Skid Steer attachment
 - 86.5" Machine Width
- 10" cut capacity
- Radial Piston Motor (4 pkgs up to 40GPM)
 - Recommend 20+GPM
 - Higher Torque capability at low speeds
 - Up to 4000psi operating pressure
- Heavy duty 1" cutting bar; 4 cutting blades
 - Optional bolt-on inserts
- Tip speed of 20,000 ft/min
- 1/4" deck thickness
- Replaceable skid shoes
- 2200 LBS approximate weight
- Reversible push bar (trees/brush/grass)
- **7 year limited consumer warranty**
1 year limited commercial warranty



REVERSIBLE FRONT PUSH BAR

One side (A) has aggressive teeth for accurate pushing and directional control of larger trees. The reverse side (B) is smooth, intended for flattening dense underbrush.



OPTIONAL BOLT-ON MULCHING KNIVES

Bolt-on mulching knives go on the bottom of the rotor to effortlessly mulch through stumps and logs.



OPTIONAL CARBIDE CHIPPER KNIVES

Another option for mulching stumps and logs are the optional carbide tipped mulching knives.

OPTIONS

Part #	List Price
BCH78XD-BK - BOLT ON MULCHING KNIFE KIT	\$870.00
BCH78XD-MK - CARBIDE TIP CHIPPER KNIFE KIT	\$755.00

SPECIFICATIONS

Model	BCH78XD
Description	78" Brush Cutter
Machine Width	86.5"
Cutting Path	78"
Max Brush Diameter	10"
Radial Piston Motor	4 pkgs up to 40GPM
Recommended GPM	20+GPM
Torque	Higher Torque capability at low speeds
Operating Pressure	Up to 4000 psi
Blades	4 blades
Heavy Duty Cutting Bar	1"
Tip Speed	20,000 ft/min
Deck Thickness	1/4"
Shipping Weight (LBS.)	2,200
List Price	\$18,700.00

Finishing Mowers



Pictured: Rear Discharge Model

FEATURES

- 7 year limited warranty
- Cat. 1 hitch
- 4 solid rubber tires
- Floating end link
- Taper lock pulleys
- Solid scalp roller

SPECIFICATIONS

Model	PFM48RD	PFM60RD	PFM72RD	PFM90RD
Cutting Width	48"	60"	72"	90"
Overall Width	50"	62"	74"	93"
Weight (LBS.)	370	435	525	714
Acres/Hr@5 MPH	2.43	3.03	3.63	4.57
HP Required	14/20	20/25	25/30	30/40
3PH Mount	Cat. 1	Cat. 1	Cat. 1	Cat. 1
RPM @ PTO Shaft	540	540	540	540
Number of Blades	3	3	3	5
Tip Speed (Ft/Min)	15,660	18,000	16,850	16,288
Wheels	Solid Rubber Wheel	Solid Rubber Wheel	Solid Rubber Wheel	Solid
Deck Thickness	10 GA	10 GA	3/16"	3/16"
Cutting Height	2" - 5"	2" - 5"	2" - 5"	2" - 5"
List Price	\$4,810.00	\$5,505.00	\$6,275.00	\$7,925.00



FEATURES

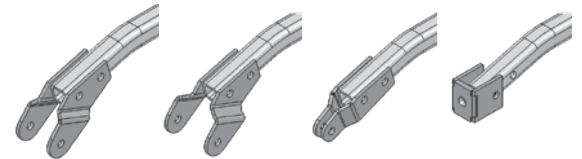
- Retractable Counterweight Shelf
- Hydraulic Tool Rotation
- Hydraulic Tool Lift
- Transport Lock



Rotary Cutter not included.

Stabilizer Arm to Cutter

Various attachment brackets are supplied with the Axis Toolbar to attach the Stabilizer Bar to the cutter. All four adapters are included.



Shown in order: Rotary Cutter, Kodiak, Fork Rear Wheel Style with 180° Wheel Adjuster, Fork Rear Wheel Style with Flat Wheel Adjuster

SPECIFICATIONS

Model	AXIS4	AXIS5-6
Weight (LBS.)	751	900
Offset	60"	84"
3PH Mount	Cat. 1	Cat. 1 & 2
Minimum Tractor Weight (LBS.)	2,900	5,800
Maximum Tool Weight (LBS.)	480	800
4' Rotary Cutter (Not Included)		req. min. 30 HP
5' Rotary Cutter (Not Included)		req. min. 60 HP
6' Rotary Cutter (Not Included)		req. min. 80 HP
Cutting Angle Cyl. Ext.		55°
Cutting Angle Cyl. Ret.		90°
Tractor Remotes Req.		2
Protection	Shear Bolt	Shear Bolt
List Price	\$8,890.00	\$9,840.00

Trail/UTV Mowers



FEATURES

- 44" - 48" Cutting Width
- Briggs & Stratton Engines
- 12 Volt electric start (UTVM48 only)
- Remote e-Stop (UTVM48 only)
- 2 Rotors with 3 blades each
- Adjustable cutting height (2"-7") with ratchet style adjustment
- 3 position hitch for straight or offset cutting
- Flat free tires
- Swivel wheels on front, fixed wheels on rear (UTVM48 Only)



SPECIFICATIONS

Model	UTVM48	UTVM48E
Engine Brand	Briggs & Stratton	Briggs & Stratton
Engine	19 HP	2 Engines (190 CC each)
Starting System	Key (electric)	Pull start
Fuel Tank	3 Gal.	1 Gal.
Battery	12 Volt	N/A
Deck	Rear Discharge	Rear Discharge
Deck Thickness	10 ga	10 ga
Blade Assembly	2 Rotors with 3 Blades each	2 Rotors with 3 Blades each
Cut Width	44"	48"
Cut Height	2" - 7"	2" - 6"
Max Brush Diameter	3/4"	1/2"
Wheels	12" x 3.5" Flat free tires	2 1/2" X 12"
Weight	720 lbs	325 lbs
List Price	\$6,550.00	\$4,310.00



REMOTE E-STOP

Cabled e-Stop can be placed on tow vehicle for easy reach. (UTVM48 Only)



FEATURES

- Electrically Controlled Poly Broom with Remote
- Leaf Bucket with Pivot for Easy Emptying
- Replaceable Durable Mesh Netting
- Flat Free Tires
- 6.5 HP Vanguard Engine



SPECIFICATIONS

Model	MKLS1846
Sweeping Width	46"
Overall Width	65"
Length	95"
Motor (HP)	6.5 HP Vanguard Engine
Brush Diameter	19"
Drive System	Chain - Fully Engaged so the brush turns all the time
Broom Lift	12V Electric
Hopper Capacity	21 Cu.Ft.
Wheels	12" x 3.5" flat free tires
Weight (LBS.)	515
List Price	\$5,720.00



HEIGHT ADJUSTMENT

Height Adjustment is controlled with a switch box with a magnetic base for easy mounting to your tow unit.

Rotary Sweepers

**NEW
PRODUCT**

FEATURES

- Engine powered and hydraulic powered options
- Skidsteer and loader mounting options
- 60 inch sweeping width
- 30 degree sweeping angle
- Hydraulic and electric angling options
- 7 Year consumer warranty



SPECIFICATIONS

Model	MKCS1960H - Hydraulic Drive	MKCS1960 - Gas Engine
Motor	8-12 GPM	6.5 HP Vanguard Engine
Sweeping Width	60"	60"
Overall Width	64 1/2"	64 1/2"
Brush Diameter	19"	19"
Drive System	Chain- Fully engaged so the brush turns all the time	Chain- Fully engaged so the brush turns all the time
Lateral Swivel	3°	3°
Sweeping Angle	30° on each side	30° on each side
Angling Options	Manual (std), Hydraulic (optional), Electrical Actuator(optional)	
Sweep Length @ 30°	54 1/4"	54 1/4"
Wheels	6" x 2" Caster Wheels	6" x 2" Caster Wheels
Weight	455 lbs. approx.	455 lbs. approx.
Mounting Options	SS Quick Attach (Standard), JD Loader Mount, ALO Quick Attach, TORO-DINGO Plate (Available)	
List Price	\$4,995.00	\$5,455.00

OPTIONS

Part #	Description	List Price
62799	Hydraulic Angling	\$475.00
62800	Electric Angling	\$1,395.00



FEATURES

- Reversible Hardened Steel Cutting Edges
- 2 Cutting Edges allow you push or pull material
- Height Adjustable Ripper Shanks
- Bolt On 3PH Design
- Quick hitch compatible



SPECIFICATIONS

Model	Width	Shanks	Mouldboard	End Plates	3PH Mount	Max HP	Weight (LBS.)	List Price
BB448STD	4'	4	3/16"	1/4"	Cat. 1	35 HP	308	\$1,650.00
BB454STD	4'6"	4	3/16"	1/4"	Cat. 1	35 HP	340	\$1,820.00
BB560STD	5'	4	3/16"	1/4"	Cat. 1	35 HP	348	\$1,990.00
BB566HD	5'6"	4	3/16"	1/4"	Cat. 1	45 HP	415	\$2,250.00
BB672HD	6'	5	3/16"	1/4"	Cat. 1	45 HP	450	\$2,315.00
BB784HD	7'	6	3/16"	1/4"	Cat. 1	45 HP	500	\$2,465.00
BB784DLX	7'	6	1/4"	1/4"	Cat. 2	75 HP	555	\$2,560.00
BB896DLX	8'	7	1/4"	1/4"	Cat. 2	75 HP	612	\$2,830.00

HEIGHT ADJUSTABLE

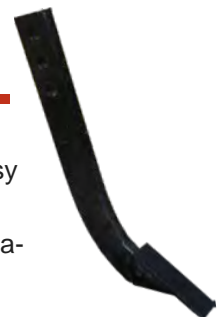
The height adjustable scarifier shanks break up the soil allowing the cutting edge to redistribute the material as the box scraper is pulled along.



REPLACEABLE SCARIFIER TIPS

Control how deep the scarifier rips with the Box Scrapers easy to use pin adjustment on the shanks. Removable shanks feature replaceable scarifier tips.

Replaceable Scarifier Tips on removable shanks.



Grader Blades



FEATURES

- Five Stops of angle adjustment (Each Forward and Back)
- Full Turn Around
- ½" x 6" Reversible Cutting Edge
- 3/8" Mouldboard (98 Series)
- Quick hitch compatible

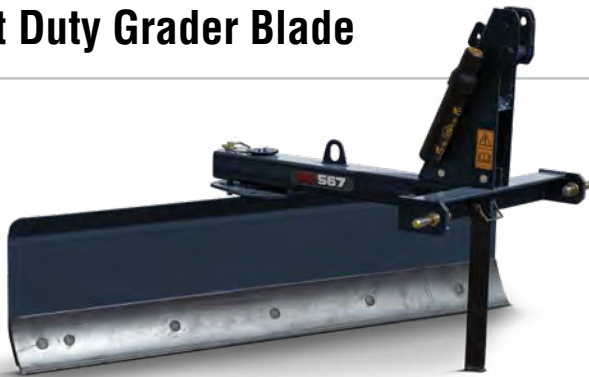
SPECIFICATIONS

Model	Max. HP	Width	Mouldboard	Mouldboard Height	Center Pin	3PH Mount	Weight (LBS.)	List Price
MKGB588	45	5'	3/16"	15"	2"	Cat. 1	180	\$1,540.00
MKGB688	45	6'	¼"	15"	2"	Cat. 1	200	\$1,725.00
MKGB788	45	7'	¼"	15"	2"	Cat. 1	215	\$1,815.00
MKGB798	75	7'	3/8"	15"	3"	Cat. 2	577	\$3,450.00
MKGB898	75	8'	3/8"	15"	3"	Cat. 2	616	\$3,765.00

OPTIONS

Model	Description	List Price
MKGB88ANG	Hydraulic Angle - Includes the Hydraulic Cylinder and Hoses	\$567.00
MKGB98ANG	Hydraulic Angle - Includes the Hydraulic Cylinder and Hoses	\$567.00

Light Duty Grader Blade



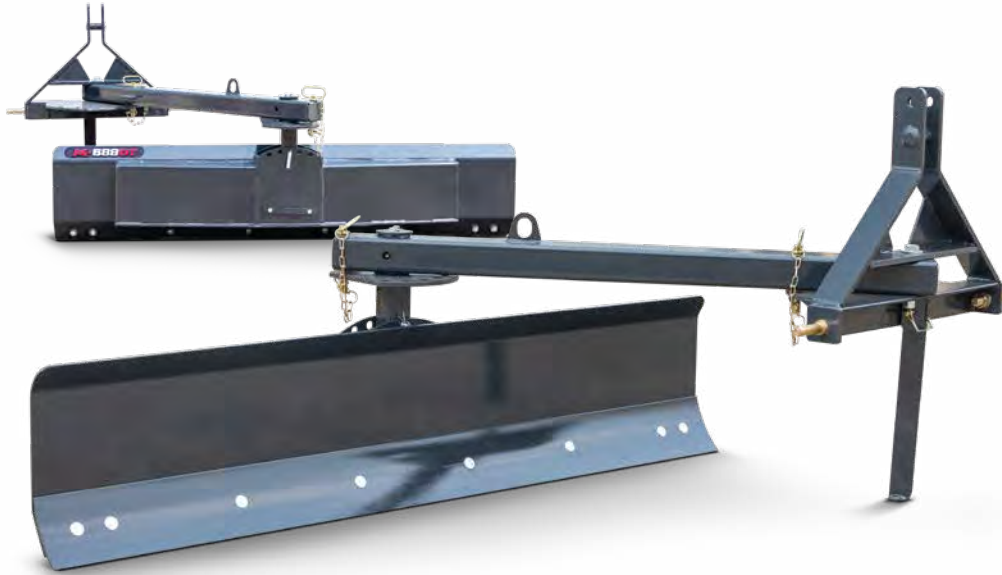
FEATURES

- Five Stops of angle adjustment (Forward and back)
- Manual angle adjustment
- 3/16" Mouldboard
- 3/8" x 6" reversible cutting edge
- Quick hitch compatible

SPECIFICATIONS

MKGB567 shown

Model	MKGB467	MKGB567	MKGB667
Horsepower	30 HP	30 HP	30 HP
Hitch		Cat. 1	
Width (in.)	48"	60"	72"
Weight (lbs.)	140	149	155
Reverse		Yes	
Mouldboard		3/16" Material	
Mouldboard Height	15"	15"	15"
Cutting Edge		3/8" x 6" Reversible	
Angle (Control)		Yes (Manual)	
Angle (Position)		5 Stops Forward / 5 Stops Reversed	
List Price	\$1,295.00	\$1,375.00	\$1,425.00



FEATURES

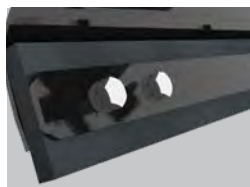
- Angle Manual Adjustment
- Offset Manual Adjustment
- Tilt Manual Adjustment
- 180° Reversible
- Bolt-On Cutting Edge
- Park Stand

SPECIFICATIONS

Model	MKGB5880T	MKGB6880T	MKGB7880T
HP	30 - 50	30 - 50	30 - 50
Hitch	Cat. 1	Cat. 1	Cat. 1
Width	60"	72"	84"
Weight (LBS.)	250	258	270
Reverse	Yes	Yes	Yes
Mouldboard	¼"	¼"	¼"
Mouldboard Height	15"	15"	15"
Cutting Edge	3/8 x 6 Reversible		
Angle (Control)	Manual	Manual	Manual
Angle (Position)	5 Forward / 5 Reversed		
Offset Adjust	5 Positions	5 Positions	5 Positions
Tilt Adjust	5 Positions	5 Positions	5 Positions
List Price	\$1,685.00	\$1,780.00	\$1,835.00

RUBBER CUTTING EDGE

These optional rubber cutting edges are ideal for snow removal, reducing damage to driveways.



(Optional on Light Duty, Standard, & Offset Tilt Grader Blades)

Model	Description	List Price
MKGBRCE5	5' Rubber Cutting Edge Kit	\$150.00
MKGBRCE5.5	5.5' Rubber Cutting Edge Kit	\$160.00
MKGBRCE6	6' Rubber Cutting Edge Kit	\$170.00
MKGBRCE7	7' Rubber Cutting Edge Kit	\$198.00
MKGBRCE8	8' Rubber Cutting Edge Kit	\$218.00
MKGBRCE9	9' Rubber Cutting Edge Kit	\$240.00
MKGBRCE10	10' Rubber Cutting Edge Kit	\$265.00

HYDRAULIC KIT

Includes hoses, cylinders, bolt-on plates, hardware.



Model	Description	List Price
MKGBOTAng	Angle Kit	\$340.00
MKGBOTTilt	Tilt Kit	\$345.00

XD Grader Blades

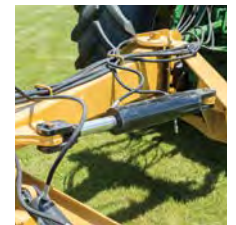


FEATURES

- Extreme Duty Grader Blade
- Available up to 14' grading path
- For tractors up to 250 HP
- Hydraulic cylinders control the blade angle, blade tilt and offset of the arm



FEATURES



**HYDRAULIC
ANGLE**

**HYDRAULIC
TILT**

**HYDRAULIC
OFFSET**

SPECIFICATIONS

Model	8XD-100	9XD-100	9XD-150	10XD-150	12XD-250	14XD-250
Horse Power (Max.)	100	100	150	150	250	250
3PH Mount	Cat. 2 & 3					
Mouldboard Thickness	5/16"				3/8"	3/8"
Mouldboard Width	96"	108"	108"	120"	144"	168"
Mouldboard Height	20"				20"	20"
Offset Adjustment	27" left or right (hydraulic)					
Adjustment Angle	32° left or right (hydraulic)			37° left or right (hydraulic)		
Adjustment Tilt	13° blade adjustment (hydraulic)					
King Pin	3-1/2"	3-1/2"	4"	4"	5"	5"
Cutting Edge	High Carbon 1/2" x 6" (reversible)					
Weight (LBS.)	1,572	1,666	1,695	1,745	1,925	2,075
List Price	\$9,965.00	\$10,215.00	\$11,565.00	\$11,645.00	\$12,950.00	\$13,350.00

OPTIONS

Part #	Description	Weight	List Price
MKGBXD-TW	Tail Wheel Kit	310 lbs.	\$2,645.00

TAIL WHEEL KIT





These rugged scrapers come in a range of sizes from 8 to 12 feet to fit your needs and your equipment. Standard on all models is our 1/2 inch thick reversible hardened cutting edge, ready to smooth out the bumps and fill in the hollows. Cutting depth is controlled by a 3"x12" hydraulic cylinder so you can decide how much of a bite to take and adjust on the go. All models are well suited for feedlot and soil reclamation or swale cutting.



FEATURES

- 1/2" x 6" reversible hardened cutting edge
- Equipped with a 15" jack
- 3" x 12" hydraulic lift cylinder
- 3" x 6" cylinder to tilt 10° each way
- GPS Mount ready

TRAILED MODEL SPECIFICATIONS

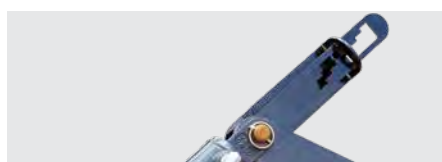
Trailed Models	LLT-8	LLT-10	LLT-12
Width	8'	10'	12'
Mount	Hitch	Hitch	Hitch
Horse Power (Max.)	165	165	165
Tilt	Yes	Yes	Yes
Cutting Edge	Single	Single	Single
Side Plate	3/8"	3/8"	3/8"
Mouldboard	1/4"	1/4"	1/4"
Wear Plate	NA	NA	NA
Skidbar	1/2" Reversible	1/2" Reversible	1/2" Reversible
Weight	1,555	1,771	1,898
List Price	\$9,995.00	\$10,740.00	\$11,325.00



ADJUSTABLE SKID BARS



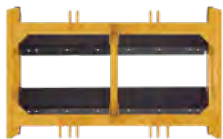
TILT INDICATOR



TRANSPORT LOCK



Grader Levelers



Top View



FEATURES

- Two ½" x 6" Reversible Cutting Edges
- 3/8" x 2 Reversible Skid Shoes
- Cutting edges can be manually adjusted to your desired cutting depth for optimal performance
- Order Mount separately (3PH or Skidsteer Adapter)
- AR400 Abrasion-Resistant Skid Shoes

OPTIONS

- Mount – Select the correct mount for application at time of order

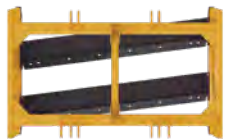
SPECIFICATIONS

Model	Working Width	Overall Width	Skid Shoes	Mouldboard Thickness	Cutting Edge	Weight (LBS.)	List Price
GL578	60"	65"	3/8" x 2 Reversible	¼"	1" Adjustment	600	\$3,185.00
GL678	72"	77"	3/8" x 2 Reversible	¼"	1" Adjustment	665	\$3,365.00
GL778	84"	89"	3/8" x 2 Reversible	¼"	1" Adjustment	730	\$3,555.00
GL878	96"	101"	3/8" x 2 Reversible	¼"	1" Adjustment	796	\$3,895.00

NOTE: Hitch must be ordered separately.

OPTIONS

Options	Part #	Weight (LBS.)	List Price
Optional Skidsteer Adapter	MKGLSSMNT	156	\$910.00
Optional 3PH Adapter (Cat. 1 & 2)	MKGL3PTMNT	36	\$365.00



Top View



FEATURES

- Two angled 1/2" x 6" Reversible Cutting Edges
- Cutting Edge Angled between 5° - 9° depending on model
- 3/8" x 2 Reversible Skid Shoes
- Cutting edges can be manually adjusted to your desired cutting depth for optimal performance
- Order Mount separately (3PH or Skidsteer Adapter)
- AR400 Abrasion-Resistant Skid Shoes

OPTIONS

- Mount – Select the correct mount for application at time of order

SPECIFICATIONS

Model	Working Width	Overall Width	Skid Shoes	Mouldboard Thickness	Cutting Edge	Cutting Angle (Deg.)	Weight (LBS.)	List Price
GL578A	60"	65"	3/8" x 2 Reversible	1/4"	1" to -0.5"	9	568	\$3,205.00
GL678A	72"	77"	3/8" x 2 Reversible	1/4"	1" to -0.5"	7	632	\$3,390.00
GL778A	84"	89"	3/8" x 2 Reversible	1/4"	1" to -0.5"	6	697	\$3,575.00
GL878A	96"	101"	3/8" x 2 Reversible	1/4"	1" to -0.5"	5	761	\$3,910.00

NOTE: Hitch must be ordered separately.

OPTIONS

Options	Part #	Weight (LBS.)	List Price
Optional Skidsteer Adapter	MKGLSSMNT	156	\$910.00
Optional 3PH Adapter (Cat. 1 & 2)	MKGL3PTMNT	36	\$365.00

Land Planes



FEATURES

- Two ½" x 6" Reversible Cutting Edges
- 3/8" x 2 Reversible Skid Shoes
- Cutting Edges are adjustable in 1" increments for optimal performance
- Hydraulically adjustable scarifier bar
- Grader quality shanks with replaceable tips
- Order Mount separately (3PH or Skidsteer Adapter)
- AR400 Abrasion-Resistant Skid Shoes

OPTIONS

- Mount – Select the correct mount for application at time of order

SPECIFICATIONS

Model	LP678	LP778	LP878
Working Width	72"	84"	96"
Overall Width	77"	89"	101"
Length	69.5"	69.5"	69.5"
Shank (Qty.)	6	6	8
Shank Tube		4" x 6" x ¼"	
Cutting Edge (x2)	Hardened ½" - Reversible 1" Adjustments		
Skid Shoes	3/8" x 2 Reversible		
Cylinder	Dual Hydraulic Cylinders for shank rotation		
Weight (LBS.)	1,140	1,240	1,350
List Price	\$6,055.00	\$6,395.00	\$6,970.00

NOTE: Hitch must be ordered separately.

OPTIONS

Options	Part #	Weight (LBS.)	List Price
Optional Skidsteer Adapter	MKLPSSMNT	156	\$910.00
Optional 3PH Adapter (Cat. 1 & 2)	MKLP3PTMNT	36	\$365.00

FEATURES

- Cat. 1 Quick Tach compatible
- 5/16" x 1" x 15.25" spring tines
- 5 forward and 3 reverse positions with manual adjustment

OPTIONS

Part #	Description	List Price
MKGB88ANG	Hydraulic Angle Kit	\$567.00
MKLRGWK	Gauge Wheel Kit	\$720.00

SPECIFICATIONS

Model	MKLR4	MKLR5	MKLR6	MKLR7
Width	4'	5'	6'	7'
MAX HP	50	50	50	50
Weight (LBS.)	246	250	263	285
Tines	24	30	36	42
List Price	\$1,740.00	\$1,810.00	\$1,920.00	\$2,035.00



Shown with optional gauge wheel kit.

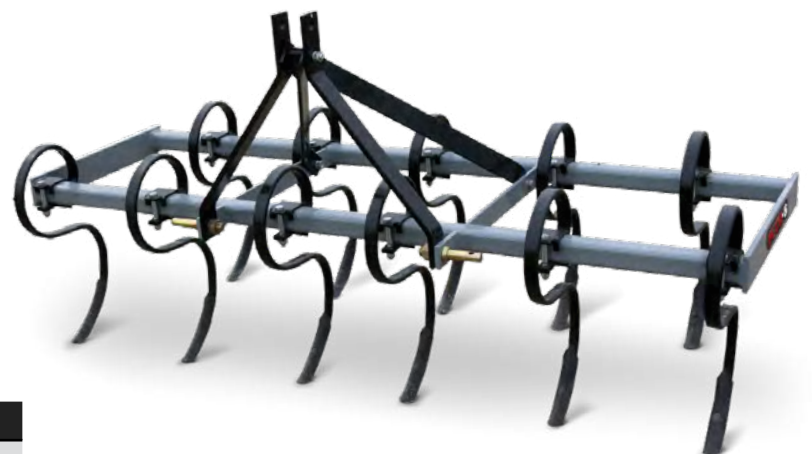
Cultivators

FEATURES

- Adjustable S-tine configuration
- Ideal for cultivating small fields and gardens

SPECIFICATIONS

Model	CU-5	CU-6	CU-7
Working Width	60"	72"	84"
Overall Width	60-1/2"	72-1/2"	84-1/2"
Weight (LBS.)	164	193	222
Tines (Heat Treated)	9 tines	11 tines	13 tines
3PH Mount	Cat. 1	Cat. 1	Cat. 1
List Price	\$1,125.00	\$1,310.00	\$1,355.00



OPTIONAL GAUGE WHEEL KIT

Part #	List Price
CUWK	\$310.00

(4" depth adjustment, 2.5"x12" rubber wheel)



Track Curry



FEATURES

- Two rows of adjustable S-Tines
- Adjustable Leveling Bar
- 12" Rolling Drum (adjustable)
- Spill Plates direct material into the working width
- Quick Hitch Compatible

OPTIONS

- Wing – levels and reclaims material around the edge of arenas
- Scarifier Bar – Used for working up hard pack
- Sprinkler Kit

SPILL PLATES

Every MK Martin Track Curry comes with two standard spill plates. These funnel any excess material into the Track Curry's path, ensuring your arena or track keeps looking its best.



SPECIFICATIONS

Model	TC-5	TC-6	TC-7	TC-8
Working Width	5'	6'	7'	8'
Number of Shanks	13	15	17	19
Shank Size	1-1/4" x 3/8" x 22"			
Shank Clearance	16"	16"	16"	16"
3PH Mount	Cat. 1	Cat. 1	Cat. 1	Cat. 1
HP Rating	18 - 32	22 - 39	26 - 47	30 - 53
Weight (LBS.)	460	530	640	725
Leveling Bar	1/2" x 6" (double beveled)			
List Price	\$4,385.00	\$4,655.00	\$5,025.00	\$5,365.00



WING

The optional Track Curry wing from MK Martin easily levels the edge of the riding arena for a clean and professional look.



SCARIFIER BAR

Dig deeper with the optional scarifier bar. Each bar is individually height adjustable, or can be removed or inverted for the right amount of action.



SPRINKLER KIT

Equipped with a 25 gallon tank, the optional sprinkler kit reduces the amount of dust being thrown into the air when working with dry material.

OPTIONS

Part #	Option	List Price
TC Wing	Track Curry Wing	\$555.00
TCSA5	5' Scarifier Bar	\$1,425.00
TCSA6	6' Scarifier Bar	\$1,595.00
TCSE12	12" Scarifier Extension (x2)	\$455.00
TCSK	Sprinkler Kit	\$3,795.00

For 7 & 8 foot scarifier bars please order the following parts combinations to match your width.

Width	Combine
7 foot	TCSA5 + TCSE12
8 foot	TCSA6 + TCSE12

3PH Rotary Tillers



FEATURES

- Replaceable Bolt-On Tines
- Self Lubricating Chain Drive
- Adjustable Skidshoes
- Floating Deflector
- Gear Box
- 3PH Mount Offset
- Slip Clutch

SPECIFICATIONS

Models	RT486	RT546	RT606	RT726
Horsepower	15-30 HP	20-40 HP	20-50 HP	25-60 HP
Hitch	Cat. 1	Cat. 1	Cat. 1	Cat. 1
Inner Width (in.)	50	54	58	74
Overall Width (in.)	55.375	59.375	63.375	79.375
Weight (lbs.)	491	514	525	636
Number of Flanges	6	6	7	9
Tines/Flange	6 (C-Shape)	6 (C-Shape)	6 (C-Shape)	6 (C-Shape)
Flange Spacing (in.)	7.75	7.75	7.75	7.75
Max Tillage Depth (in.)	6.5	6.5	6.5	6.5
Number of Skid Shoe Settings	5	5	5	5
Rotor Diameter (in.)	17"	17"	17"	17"
Rotor Speed @ 540 PTO (RPM)	211	211	211	211
Gearbox (HP)	50HP @ 540	50HP @ 540	50HP @ 540	50HP @ 540
Drive Chain	#80	#80	#80	#80
List Price	\$5,285.00	\$5,655.00	\$6,215.00	\$6,865.00



FEATURES

- Skid steer attachment plate
- 74" working width
- 9 tine flanges
- 6 tines per flange
- Working depth 6.5"
- 17" rotor

SPECIFICATIONS

Models	RT726SF	RT726HF
Flow	Standard	High Flow
Hitch	Skidsteer Attachment Plate	Skidsteer Attachment Plate
Inner Width (in.)	74	74
Overall Width (in.)	79.375	79.375
Weight (lbs.)	725	725
Number of Flanges	9	9
Tines/Flange	6 (C-Shape)	6 (C-Shape)
Flange Spacing (in.)	7.75	7.75
Max Tillage Depth (in.)	6.5	6.5
Rotor Diameter (in.)	17"	17"
Drive Chain	#80	#80
List Price	\$6,250.00	\$6,485.00

Flow Rates	
Standard	16-28 GPM
High Flow	28-40 GPM

To ensure optimum performance, hydraulic output must match motor package.

Garden Hillers



FEATURES

- Shanks & sweeps keep soil loose after tractor compaction
- Adjustable disc height and horizontal spacing
- Discs angle is adjustable
- 2x2 steel tube construction

SPECIFICATIONS

Model	GH60
Width	60"
Hitch	Cat. 1
Disc	14"
Weight	100 lbs.
List Price	\$795.00

FEATURES

- 3PH hookup Cat. 1
- Quick and easy dump
- Raise and lower to desired height for loading
- Heavy duty tubular sub frame
- 14 GA. material box structure



SPECIFICATIONS

Model	Cap	Size	Weight (LBS.)	List Price
DB495	30 cu ft	18" x 48" x 48"	290	\$2,115.00
DB395	10 cu ft	10" x 36" x 36"	120	\$1,310.00

Weight Boxes

FEATURES

- 3.5 cu. ft. internal volume
- 525 lbs maximum holding weight
- Cat. 1 & 2 3PH compatible
- Tool holder
- Clean out hatch
- 2" Hitch receiver



SPECIFICATIONS

Model	MKWB
Hitch Type	Cat. 1 & 2
Box Volume	3-½ cu ft
Max Weight (box and fill) (LBS.)	575
Max Weight (fill only) (LBS.)	525
Quick Hitch Compatible	Yes
Shipping Weight (LBS.)	104
List Price	\$690.00

Fill Type	Weight Per Cubic Foot (lbs.)
Concrete	150
Gravel	110
Sand	100

Trailer Backhoe



FEATURES

- 360 degree rotation
- 4ft 11" working depth
- 1764lbs (800kg) digging force
- Towable design
- One year consumer warranty





SPECIFICATIONS

BT810	Standard Setup
Engine HP	14 HP Gasoline
Capacity (HP)	14 hp
Start up	Electric
Digging Force	800 kg/1,764 lbs
Bucket Reach	204 cm / 6' 8"
Working Depth	160 cm / 5 ft 3 inches
Tongue Weight	113 kg / 250 lbs
Lifting Capacity	200 kg / 440 lbs
Total Weight	600 kg / 1323 lbs
Total Reach of Boom	270 cm / 8' 10"
Hydraulic Pressure	16 MPA / 2,320 psi
List Price	\$8,795.00

14HP GASOLINE ENGINE



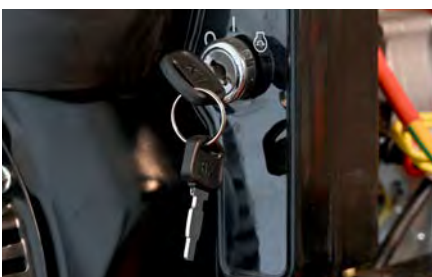
5 FOOT WORKING DEPTH



360 DEGREE ROTATION



ELECTRIC START



CURVED BOOM DESIGN



12" & 18" BUCKET WITH MECHANICAL THUMB



Gravity Boxes



*12000 Center Dump Model Shown

SPECIFICATIONS

Model	MKGW3200			MKGW5000		
Extension	N/A	8"	19"	N/A	8"	12"
Capacity (Bushels)	320	375	450	500	570	605
Hopper Construction	14 GA.			12 GA.		
Under Structure	3" x 6" x .188 wall rectangular tube			4" x 8" .188" wall rectangular tubing		
Unloading Door	45" width			57" width (standard) 28" width x2 (divider)		
Chute Height	17"-20"			17"-21"		
Box Dimensions						
Length	158"	158"	158"	196"	196"	196"
Width	96"	96"	96"	101"	101"	101"
Height (less wagon)	78"	86"	98"	89"	98"	101"
Height (wagon & 22.5" wheel)	102"	110"	122"	123"	131"	135"
Weight (LBS.)	1,980	2,130	2,270	3,610	3,845	3,915
Wheel Base	112"			142"		
Suggested Wagon	275 Horst Wagon - 425/22.5 Tires			365 Horst Wagon - 425/22.5 Tires		
List Price	\$11,005.00	\$11,965.00	\$12,240.00	\$15,520.00	\$16,540.00	\$16,830.00
List Price c/w Horst Wagon*	\$16,905.00	\$17,865.00	\$18,140.00	\$23,715.00	\$24,735.00	\$25,025.00
Suggested Wagon Included	275 Horst Wagon - 425/22.5 Tires			365 Horst Wagon - 425/22.5 Tires		

* Wagon options not included in list price. Wagon options are available at an additional cost.

WAGON OPTIONS

Part #	Description	List Price
horstWA-BR2WDI	Brakes	\$3,495.00
horstWA-SBD	Spring Balancer (Double)	\$295.00



SPECIFICATIONS

Model	MKGW6500			MKGW12000
Extension	N/A	8"	12"	N/A
Capacity (Bushels)	645	745	800	1,200
Hopper Construction	12 GA.			12 GA.
Under Structure	4" x 8" .188" wall rectangular tubing			4x8x.25w
Unloading Door	57" width (standard) 28" width x2 (divider)			15" length x 47" width X 2
Chute Height	16"-20"			18" (Side Discharge)
Box Dimensions				
Length	229"	229"	229"	315"
Width	115"	115"	115"	110"
Height (less wagon)	91"	99"	103"	136"
Height (wagon & 22.5" wheel)	125"	133"	137"	156"
Weight (LBS.)	4,645	4,915	5,005	17,500
Wheel Base	156"			215"
Suggested Wagon	485 Horst Wagon - 425/22.5 Tires			608 Horst Wagon- 425/22.5 Tires (with brakes)
List Price	\$23,050.00	\$24,320.00	\$24,615.00	Call for Pricing
List Price c/w Horst Wagon*	\$34,210.00	\$35,480.00	\$ 35,775.00	\$129,900.00
Suggested Wagon Included	485 Horst Wagon - 425/22.5 Tires (Reinforced Rims)			608 Horst Wagon- 425/22.5 Tires (with brakes)

* Wagon options not included in list price. Wagon options are available at an additional cost.
All wagons come with used 425 truck tires. Tarp kit is included in the price for the 12000 model.

Gravity Box Options



HYDRAULIC DOOR OPENER

Part # MKGW-HYD Door	Description	List Price
MKGW50HD	Hydraulic Door Opener (MK5000)	\$1,395.00
MKGW65HD	Hydraulic Door Opener (MK6500)	\$1,395.00



The Hydraulic Door allows you to conveniently control the metering of the material using a remote from your tractor.

UNLOADING AUGER

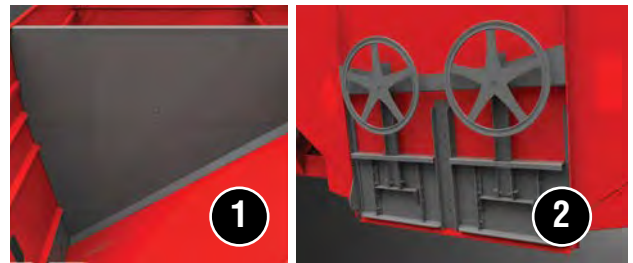
Adjustable hopper attaches to the exit door. Available in either stainless or black powder coated down spout.

Part #	Description	List Price
MKGWAT6X16	6" x 16' auger with cupped steel flighting & telescopic down spout.	\$3,315.00
MKGWAT6X16	8" x 16' auger with cupped steel flighting & telescopic down spout.	\$4,220.00
MKGWATSS6X16	6" x 16' stainless steel auger with cupped flighting & telescopic down spout	\$5,105.00
MKGWATSS8X16	8" x 16' stainless steel auger with cupped flighting & telescopic down spout	\$8,610.00



DIVIDER KIT

Part #	Description	List Price
MKGW32DIV	Center Divider (MK3200)	\$2,795.00
MKGW50DIV	Center Divider (MK5000)	\$2,940.00
MKGW65DIV	Center Divider (MK6500)	\$3,150.00



The optional divider splits your Gravity Box **1**, allowing for two separate commodities to be in the box at the same time. Each side also has it's own door for individual unloading and metering **2**.



GRAIN SHIELD TARP KIT

Part #	Capacity	List Price
MKGW32TS	320-450	\$2,435.00
MKGW50TS	500-610	\$2,910.00
MKGW65TS	645-800	\$3,295.00

* Comes standard on MKGW12000 model.



This ratchet-free locking system not only protects the contents from blowing away and from inclement weather, but also locks quickly and easily so you can head out sooner.

REAR LADDER KIT

Part #	Description	List Price
MKGW32LAD	Fits 3200 Models	\$435.00
MKGW50LAD	Fits 5000 & 6500 Models	\$695.00



The optional rear ladder gives another access point for operators to look into the Gravity Box.

CENTER DUMP

Part #	Description	List Price
MKGW32CD	Center Dump for 3200	\$450.00
MKGW65CD	Center Dump for 5000 & 6500	\$375.00



The optional center dump directs the unloading material beneath the gravity box, ideal for when the unloading area isn't wide enough for standard side dumping.

Field Roller

**NEW
PRODUCT**

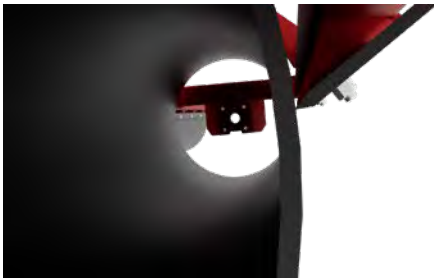


FEATURES

- Working width of 34 feet, 36 feet, 41 feet and 46 feet
- 36 inch drum diameter
- Half inch wall thickness for extra durability
- Weight per foot ranging from 475 lbs to 453 lbs
- Narrow transport width of 164"
- Forward fold design allows for quick setup and fold up
- Mud scraper on the backside prevents mud build up on the drums
- Made in Canada and backed by our 7 year warranty



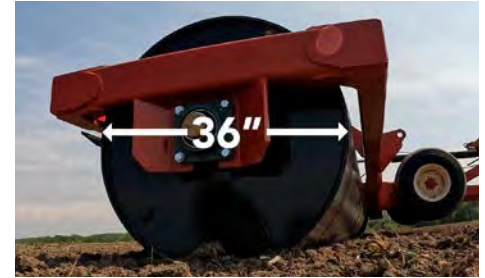
1/2 INCH THICK DRUM



34' - 46' WIDTHS



36" DRUM DIAMETER



FORWARD FOLD DESIGN



MUD SCRAPER



NARROW TRANSPORT WIDTH



3" DRUM SHAFT & BEARING



SPECIFICATIONS

Models	R3436	R3636	R4136	R4636
Field Working Width	34'	36'	41'	46'
Frame Sections	11.5' -12' - 11.5'	12.5' -12' - 12.5'	15' -12' - 15'	17.5' -12' - 17.5'
Section Overlap	5"	5"	5"	5"
Machine Weight	16,190 lbs	17,275 lbs	19,055 lbs	20,855 lbs
Weight Per Foot	475 lbs	479 lbs	464 lbs	453 lbs
Drum Dia.	36"	36"	36"	36"
Drum Wall Thickness	1/2"	1/2"	1/2"	1/2"
Center Frame Transport Cylinder	4" x 48"	4" x 48"	4" x 48"	4" x 48"
Wing Boom Cylinder	4" x 48"	4" x 48"	4" x 48"	4" x 48"
U-Joint & Pivot Pin Diameter 2" w/ Maintenance Free Composite Bushings				
Drum Roller Shaft Diameter	3"	3"	3"	3"
Transport				
Dimensions	164"W x 270"L x 150"H	164"W x 270"L x 150"H	164"W x 270"L x 150"H	164"W x 270"L x 150"H
Tires (4)	12.5LX15FI	12.5LX15FI	12.5LX15FI	12.5LX15FI
List Price	\$55,545.00	\$58,820.00	\$66,985.00	\$75,160.00

Disc Mower Implement Caddy



FEATURES

- Ratchet adjustment standard
- Inline or offset caddy
- Height adjustable clevis hitch
- Includes toplinek
- Adjustable (width) lower points
- Maximum load 1,600 lbs.



ADJUSTABLE HITCH

Adjust the hitch to ensure your mower is level.

OPTIONS

- Hydraulic adjustment
- Inline hydraulic lock for transport



HYDRAULIC (OPTION)

Hydraulically lifts the mower up and down.

Part #	List Price
Hydraulic Lift	\$450.00

SPECIFICATIONS

Model	MKC1200	MKC1201
Weight (LBS.)	1,900	1,835
Max Implement Weight	1,600 lbs.	1,600 lbs.
Lift Cyl.	3x8	3x8
Tires	11L 15	11L 15
Main Frame	7x7 Tube	7x7 Tube
RPM	540	540
Driveline	#5	#5
List Price	\$8,975.00	\$8,925.00



FEATURES

- 12,000 LBS. Capacity
- 3PH Mount Cat. 2 or 3 implements
- Hydraulically raise and lower caddy to desired height

SPECIFICATIONS

Model	SCIC250	SCIC1700
Width	125"	152"
MAX HP	250	500
Weight (LBS.)	3,560 **	7,750
Lift Cyl.	3-½ x 16	5 x 14
Lift Capacity (LBS.)	12,000	20,000
Category	Cat. 2 & 3	Cat. 4
Tires	12.5L	16.5 x 16.1
List Price	\$20,335.00	\$43,560.00

NOTE: Weight box is included in the price of the SCIC250

** Includes the weight of the weight box



Effective on products retailed on or after October 1, 2022

Seven Year Limited Consumer Warranty
90 Day Limited Commercial Warranty including Gearboxes

Commercial includes rental and industrial applications.

Warranty begins at the time of customer delivery and is activated upon warranty registration receipt at MK Martin Enterprise Inc.

Warranty coverage is null and void unless the Warranty Registration form has been **completed in full and is on file at MK Martin Enterprise Inc.**

Keep your registration copy in a safe place, it is required as proof of warranty activation.

This new and unused product is warranted by MK Martin Enterprise Inc. to be free from defects in material and workmanship under normal use and regular service as described in the owner's manual, for a consumer period of 7 years from the date of delivery, and commercial period of 90 days, including gearboxes, from the date of delivery. Warranty is limited to the replacement of parts and / or repair of the product.

If issues develop within the warranty period with the product, contact the local dealer from which you purchased the unit. Only MK Martin authorized dealers may make repairs to the product or affect the replacement of defective parts, unless otherwise approved by MK Martin. Repairs / replacement will be done at no charge within a reasonable time after the receipt of the product. This warranty does not cover the following items:

1. Normal replacement of service items.
2. Normal maintenance or adjustments.
3. Machines or parts lost or damaged during shipment,
4. Accessory items / parts not supplied by MK Martin
5. Damages resulting from:
misuse, negligence, accident, theft or fire
use of improper or insufficient fuel, fluids or lubricants
use of aftermarket parts or accessories, unless approved by MK Martin
modifications, alteration, tampering or improper repair
any device or accessories installed other than an authorized dealer.
6. Tires are covered by the manufacturer of the tire and the warranty period specified by that manufacturer.
Please contact the tire manufacturer for warranty on these items.

MK Martin Enterprise Inc. shall not, in any event, be liable for any losses, damages or costs; to include profits, travel, transportation, pick up, delivery, towing cost, tow vehicle, loss of use, whether special, incidental, consequential or otherwise, in any way. Unit or parts are returned at the customer's expense.

Include a copy of your completed Warranty Registration form with any claim as proof of warranty activation. There are no warranties, expressed or implied, other than those specified herein. No agent, employee or other person has any authority to vary any of the foregoing provisions.

Warranty coverage is null and void unless the Warranty Registration form has been completed in full and is on file at MK Martin Enterprise Inc. Warranty begins at the time of customer delivery and is activated upon Warranty Registration receipt at MK Martin Enterprise Inc.

Custom/Standard Colors /Setup Fees

Standard Colors

Product	Standard Color
Gravity Box	Red, Green, or Blue
Snow Blowers	Charcoal or Red
Commercial Blowers/Throwers	Charcoal, Industrial Yellow
Rotary Cutters & Mowers	Charcoal, Industrial Yellow
Axis Tool Arms	Charcoal
Box Grader & Grader Blades	Charcoal
XD Grader Blades	Industrial Yellow
Land Leveler	Industrial Yellow
Grader Leveler	Industrial Yellow
Land Plane	Industrial Yellow
Track Curry	Industrial Yellow
Rotary Tiller	Charcoal
Landscape Rake	Charcoal
Cultivators	Charcoal
Weight Box	Charcoal
Dump Box	Charcoal
Interseeder	Charcoal

Custom Colours

Custom tractor match colours will be provided at no extra charge.

Setup Fees

Any other setup charges not listed will be subject to a rate of \$75.00/hr.

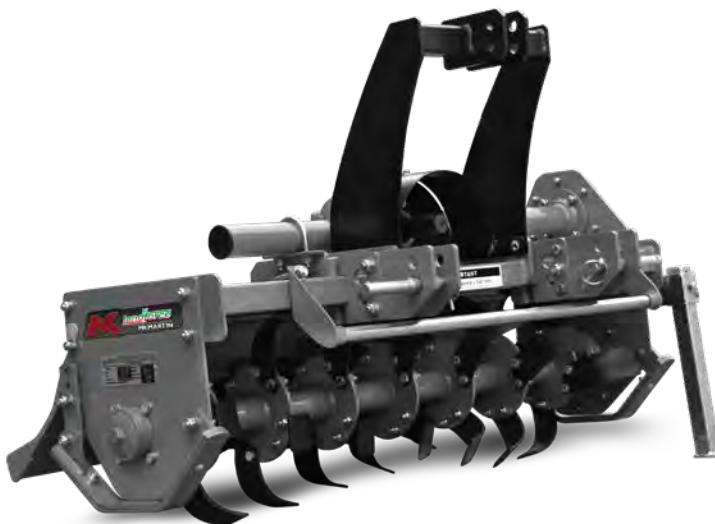
Product	Setup Fee
Gravity Box on Running Gear	\$190.00
Running Gear Assembly	\$250.00
Gravity Box Extension	\$250.00
Gravity Box Divider Installation	\$1495.00
Tarp Kit Installation	\$690.00
Land Leveler Setup	\$190.00
Snowblower Setup	\$135.00
PT Snowblower Rear Blade	\$115.00
Cultivator Setup	\$135.00
Track Curry Setup	\$225.00
Rotary Cutters & Mowers	\$135.00
Rotary Cutter Chain Guard	\$135.00
Tool Arm & Cutter Setup	\$260.00
Brake Setup	\$330.00

E&OE Errors and omissions excepted November 2024. Pricing and specifications printed in this catalogue are current at printing and may be subject to change without notice. For current information on all of our products, please contact MK Martin directly.



MK Martin has developed a strategic partnership with Landforce Agricultural Products. Through this partnership, MK Martin is able to offer exclusive distribution of all Landforce products. Landforce is committed to manufacturing quality harvesting, seeding and land preparation equipment.

Rotary Tiller Mini Series



SPECIFICATIONS

Models	LMT120	LMT140	LMT160	LMT180
Overall Width	55"	63"	71"	79"
Working Width	47"	55"	63"	71"
Weight (LBS.)	507	551	606	672
Hitch Type	CAT- I & CAT - II			
Min HP Required	25-30	30-35	30-35	35-40
Gear Box	Single / Multi Speed			
Side Transmission	Gear / Chain Drive			
Working Depth (Min/Max)	2.8" to 4"			
No of Blades (Type L/C)	36	42	48	54
PTO speed (RPM)				
Working Depth Control	Skid Fitted as standard Equipment			
Rotor Speed	210-240			
Driveline Safety Device	Shear Bolt / Slip Clutch			
List Price	\$3,195.00	\$3,370.00	\$3,610.00	\$3,895.00

Landforce Agricultural Products

Rotary Tiller Vivo Series



Rotary Tiller Superemo Series



SPECIFICATIONS

Models	LVT120	LVT150	LVT165	LVT185	LVT220
Overall Width	60"	71"	77"	87"	96"
Working Width	48"	59"	66"	76"	85"
Weight (LBS.)	827	849	904	948	1003
Hitch Type	CAT-II				
Min HP Required	25-35	30-40	35-45	45-57	50-65
Gear Box	Single / Multi Speed				
Side Transmission	Gear Drive				
Working Depth (Min/Max)	4" to 6"				
No of Blades (Type L/C)	30/42/60	36/48/66	42/54/72	48/60/78	54/66/84
PTO speed (RPM)	540/1000				
Working Depth Control	Skid Fitted as standard Equipment				
Rotor Speed	180-250				
Driveline Safety Device	Shear Bolt				
List Price	\$4,670.00	\$4,930.00	\$5,170.00	\$5,410.00	\$5,645.00

SPECIFICATIONS

Models	LST120	LST150	LST170	LST195	LST220
Overall Width	59"	72"	79"	89"	98"
Working Width	49"	60"	68"	77"	88"
Weight (LBS.)	981	1069	1102	1179	1246"
Hitch Type	CAT-II				
Min HP Required	30	35	45	50	55
Gear Box	Single / Multi Speed				
Side Drive	Gear / Chain Drive				
Working Depth (Min/Max)	4" to 6"				
No of Blades (Type L/C)	30	36	42/48	48/54	54/60
PTO speed (RPM)	540/1000				
Working Depth Control	Skid Fitted as standard Equipment				
Rotor Speed	180-250				
Driveline Safety Device	Shear Bolt/Slip Clutch				
List Price	\$5,085.00	\$5,345.00	\$5,565.00	\$5,870.00	\$6,085.00

Ranger Standard Mower



Ranger Large Mower



SPECIFICATIONS

Models	LRS130	LRS150	LRS160
Gearbox	Free Wheel type		
PTO shaft/clutch	Shear Bolt Type		
Side Transmission	V-Groove Pulleys		
Belts	3 toothed V-Belts		
Rotor tube dia	4"	4"	4.5"
Rotor swing dia	13.8"	13.8"	14.1"
Rotor RPM (@540/1000 PTO RPM)	1266/2344		
No. of hammers	18	20	22
No. of blades (Y+I) (Optional)	36+18	40+20	44+22
Linkage	Cat-I		
Linkage offset type	Sliding / Fixed	Sliding / Fixed (optional)	
Safety guard	As per CE requirements		
Overall Length	57"	65"	69"
Overall Width	34"	34"	34"
Overall Height	33"	33"	33"
Min. Working Width	48"	57"	61"
Tractor range (hp)	35-60	35-65	40-65
Weight (LBS.) (approx.)	816	917	959
List Price	\$4,075.00	\$4,585.00	\$4,770.00

SPECIFICATIONS

Models	LRX140	LRX150	LRX160	LRX175	LRX200
Gearbox	Free Wheel type				
PTO shaft/clutch	Shear Bolt Type				
Side Transmission	V-Groove Pulleys				
Belts	4 Toothed V-Belts				
Rotor tube dia	5.5"	5.5"	5.5"	5.5"	5.5"
Rotor swing dia	12"	12"	12"	12"	12"
Rotor RPM (@540/1000 PTO RPM)	1266/2344				
No. of hammers	14	16	16	16	20
No. of blades (Y+I) (Optional)	28+14	32+16	32+16	32+16	44+20
Linkage	Linkage				
Linkage offset type	Sliding				
Safety guard	As per CE requirements				
Overall Length	63"	67"	71"	77"	86"
Overall Width	44"	44"	44"	44"	44"
Overall Height	41"	41"	41"	41"	41"
Min. Working Width	53"	57"	61"	67"	77"
Tractor range (hp)	30-50	30-50	40-60	40-70	40-80
Weight (LBS.) (approx.)	1235	1257	1301	1345	1488
List Price	\$6,120.00	\$6,245.00	\$6,470.00	\$6,695.00	\$7,415.00

Landforce Agricultural Products

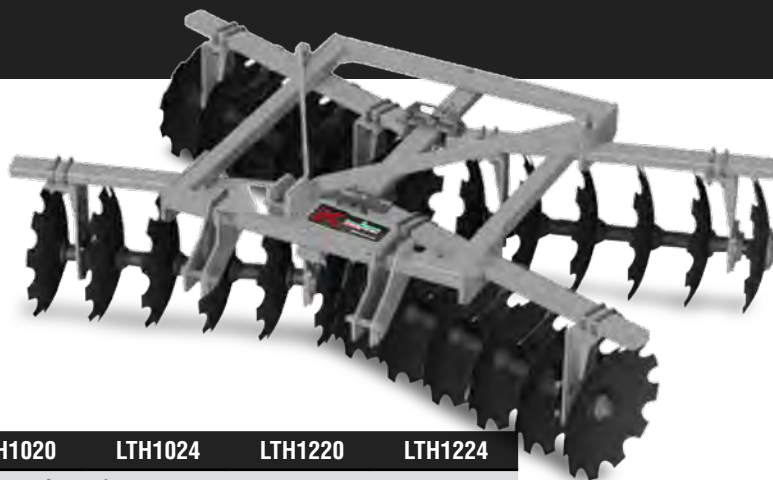
Post Hole Digger



SPECIFICATIONS

Models	LPD9	LPD12	LPD18
Frame	Heavy Duty Rectangular Pipe		
Hitch	Cat-II		
Gear Box	Compatibility with tractor 55 HP		
Gear Box Ratio	3:1		
Boom OD	3.5"		
Yoke OD	3"		
Auger Speed	180 RPM		
Output Shaft	2"		
Input RPM	540		
PTO	Clutch Type		
Auger length	4"		
Auger Diameter	9"	12"	18"
Flighting	Semi- Double	Semi-Double/Double	
Weight (Approx.) (LBS.)	313	326	395
Min. Tractor HP	40	45	50
List Price	\$3,620.00	\$3,770.00	\$4,245.00

Tandem Disc Harrow



SPECIFICATIONS

Models	LTH1012	LTH1016	LTH1020	LTH1024	LTH1220	LTH1224
3 Point Hitch Type	Cat - I & II					
HP	40	40	65	65	40 to 100	40 to 100
Cultivation Width(inch)	48"	60"	72"	90"	72"	96"
Disc Blade Size (inch)	16"	16" or 18"	18"	18"	20" or 22"	20" or 22"
No of Discs	12	16	20	24	20	24
Disc Spacing (inch)	7 ½"	7 ½"	7 ½"	7 ½"	7 ½"	7 ½"
Frame Tube (inch)	2" Square		2 ½" Square		3" Square	
Gang Tube (inch)	3" x 1 ½"	3" x 1 ½"	3" x 2"	3" x 2"	4" x 3"	4" x 3"
Gang Axle (inch)	1"	1"	1"	1"	1 1/8"	1 1/8"
Weight (LBS.)	421	533	714	865	947	1143
List Price	\$2,680.00	\$3,305.00	\$3,745.00	\$3,745.00	\$4,555.00	\$5,245.00



LIVING COUNTRY



3950 Steffler Rd., Elmira Ontario, N3B 2Z3

Toll Free: 855-664-2752

Tel: 519-664-2752

Email: sales@mkmartin.ca

www.mkmartin.ca

Prices take effect October 1, 2024

Authorized Dealer

