

THE BEST HAS A NAME

MORSI

44° 41' 13" N
11° 20' 17" E



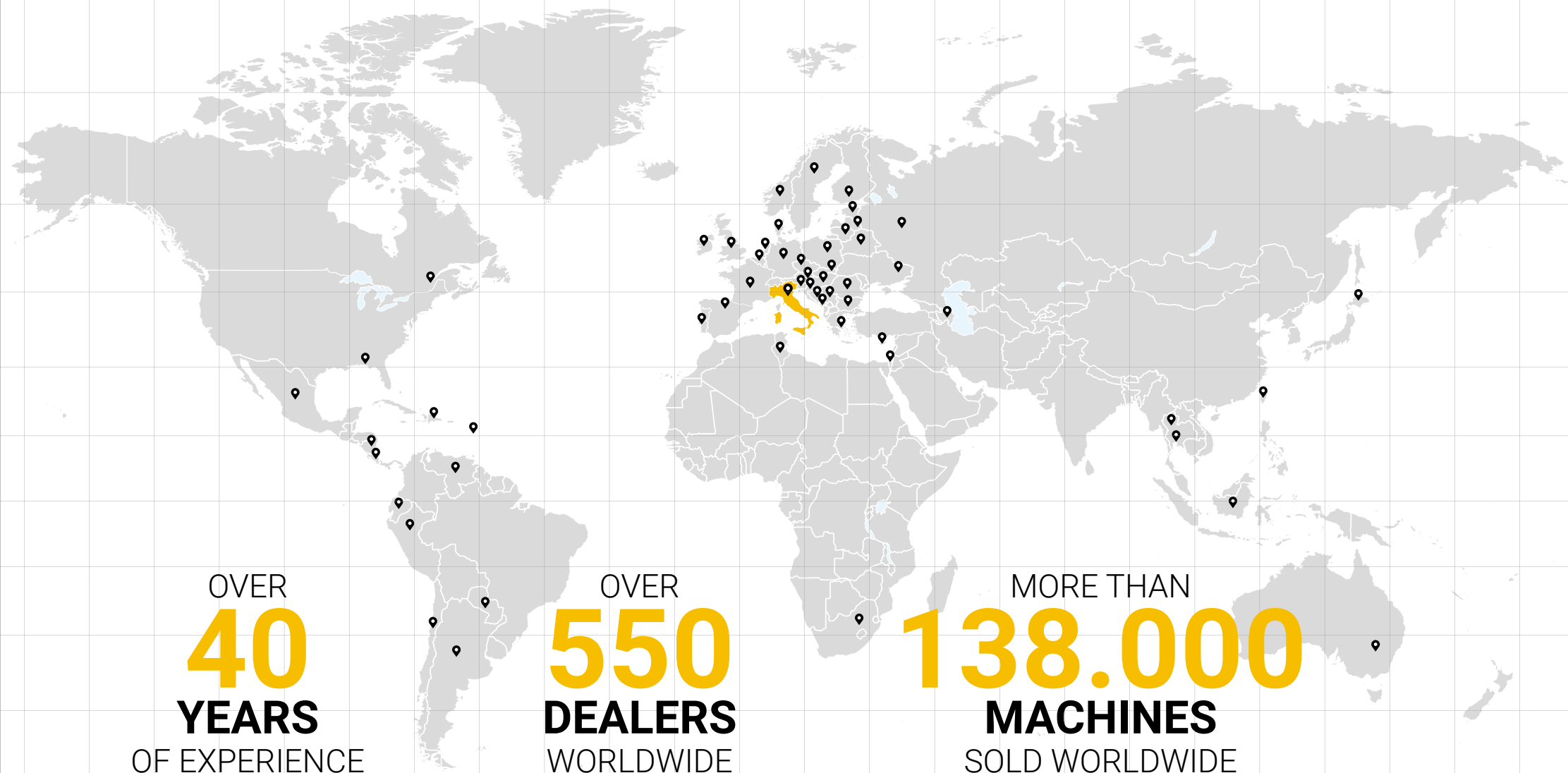
EXCAVATORS

WWW.ORSIGROUP.IT



THE BEST HAS A NAME
MORSI

OUR DISTRIBUTION WORLD WIDE



OVER
40
YEARS
OF EXPERIENCE

OVER
550
DEALERS
WORLDWIDE

MORE THAN
138.000
MACHINES
SOLD WORLDWIDE

CERTIFICATIONS



CERTIFICATO



ISO 9001:2015

ORSI GROUP S.p.A.

ORSA S.p.A. è un'azienda leader nel settore delle macchine agricole e dei servizi di manutenzione e assistenza tecnica.

ORSI GROUP S.p.A.
Sede Legale
Sede Operativa e Centro Ricerche



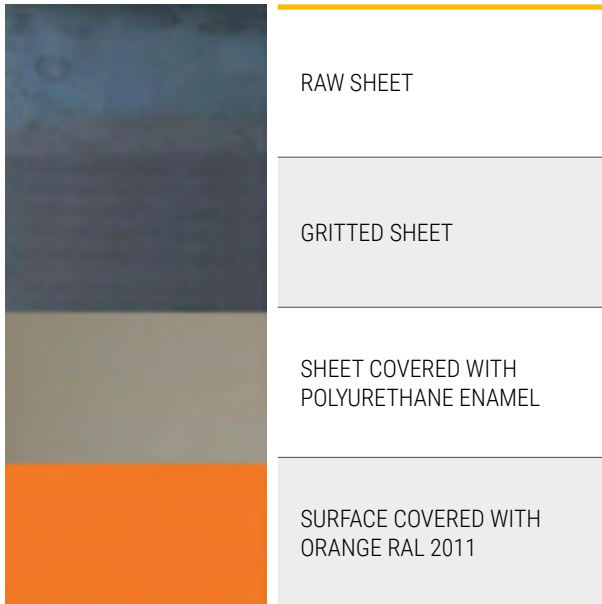
9001/07/2015



ANTICORROSIVE TREATMENT

ANTICORROSIVE POWDER TREATMENT

- Shot Blasting SA Ø 2,5
- Primer application in zinc phosphate epoxy powder thickness 60-80 µm
- EXTRA polyurethane finishing powder (UV-resistant) thickness 60-80 µm polymerization at 180° for 20'
- Final dry thickness 120-160
- Orange colour RAL 2011
- Corrosivity class c5-i following DIN55633 and DIN EN ISO 12944-6 norms
- Salt spray resistance 2000h



ANTICORROSIVE LIQUID TREATMENT FOR MECHANICAL AND HYDRAULIC COMPONENTS

HIGH STRENGTH CYCLE

- Shot Blasting sa Ø 2,5
- Epoxy bi-component primer application in zinc CT90
- Expoprimer application CT113 grey 7035
- EXTRA bi-component polyurethane enamel application (UV-resistant)
- Final dry thickness 350-400 µm

STANDARD CYCLE

- Shot Blasting sa Ø 2,5
- Expoprimer application CT113 grey 7035
- EXTRA bi-component polyurethane enamel application (UV-resistant)
- Final dry thickness 180-200 µm

“WHY AN EXCELLENT PAINTING IS IMPORTANT”

BECAUSE IT KEEPS THE PRICE OF THE MACHINE ON THE SECOND-HAND MARKET.

N.B. These cycles are applied on all our equipment.







WHY WE USE HARDOX?

Hardox® 450

The most popular abrasion-resistant steel with excellent structural properties.

Hardox® 450 is an abrasion-resistant steel with a nominal hardness of 450 HBW. Hardox® 450 combines good bendability and weldability with an option for guaranteed impact toughness (Hardox® 450 Tuf).

The products can be used in many different components and structures that are subject to wear. Hardox® 450, with an extra 50 Brinell hardness over our 400 grade, provides better dent and abrasion resistance as well as longer wear life, so you can achieve even greater savings.



WHY WE USE STRENX?

Superior properties

Strenx® steel has extremely consistent properties, ensuring precision and efficiency in the workshop.

If you think all steel is basically the same, Strenx® performance steel will change your thinking. Strong and reliable from surface to core, Strenx® steel features exceptional surface quality as well as impressive thickness and flatness tolerances verified by the Strenx® guarantees. The steel's properties - yield and tensile strength, bending performance, impact toughness - are carefully tested to ensure reliability and consistency in every delivery.

TECHNICAL INFORMATION



ORSI V3.1

Compact valve group proportioned to the oil flows necessary to the machineries. Just projected by ORSI's technical dept. to satisfy the needs of machineries attached to excavators. Anticavitation valve, max valve and flow divider; exhaust drainage collector and only 2 hoses for connection to the excavator (ingoing oil and direct return to the tank).



HYDRAULIC GEAR MOTOR

Hydraulic gear motor in cast iron. Designed to have excellent mechanical characteristics with a rigid and compact structure that guarantees excellent reliability and high volumetric performance even at high working pressures. Max 250 BAR.



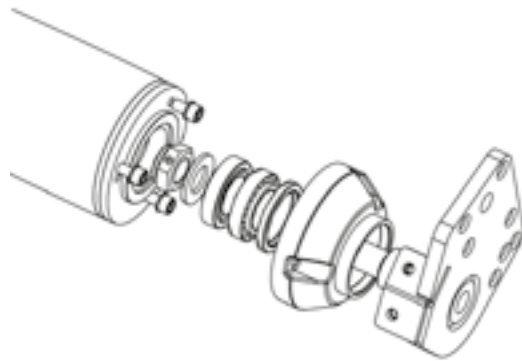
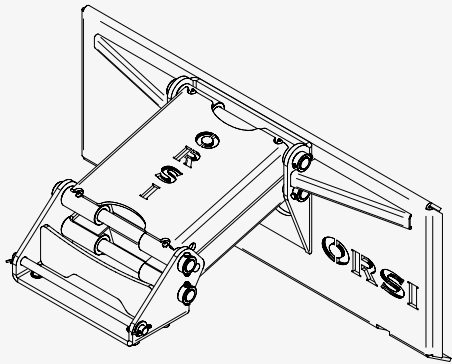
REXROTH HYDRAULIC PISTON ENGINE

Constant displacement hydraulic motors with rotating assembly with axial conical pistons and inclined cylinder block. Very high quality, very high performance. Variable displacement hydraulic motors with rotating assembly with axial conical pistons and inclined cylinder block. By adjusting the inclined cylinder block, it is possible to modify the torque and the displacement continuously.



ASPORTABLE OSCILLATING PLATE

Autolevelling system specially bolted to the chassis with the same saddle attack drill. Possibility to remove it quickly for a greater accuracy and better operation in the profiling of the hedges. Also equipped with a locking pin in case of occasional use in the vertical profiles.



OSCILLATING HITCH WITH HYDRAULIC SIDE SHIFTA

Universal hitch plate for miniskids with integrated floating system, for a better adherence of the shredder to the working plane. Fixed to the shredder by means of a bolted stirrup for maximum flexibility over time.

PROFESSIONAL ROLLER

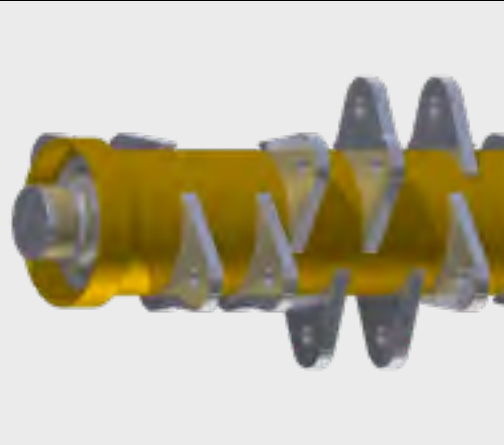
Professional support roller Ø 140 mm with 4 opposed tapered roller bearings. Interchangeable central body.

MOUNTING BRACKETS

Attachment bracket for excavator supplied on request (without pins).

ADAPTERS

ROTOR



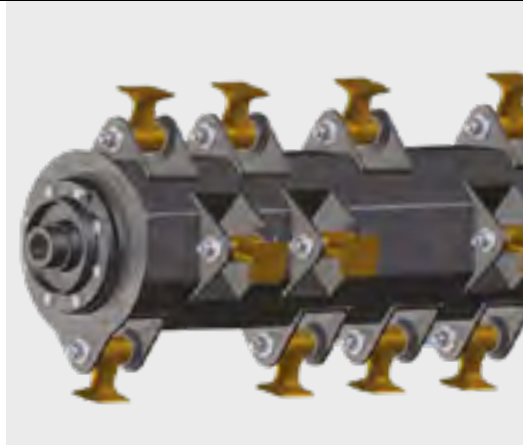
HELICOCUT

Rotor with helical cutting system design with 6 rows of tools, designed to reduce the efforts and give more homogeneity to the cut and therefore better performance. Possibility to change 4 or 5 types of tools on the same rotor to always have the more suited tool for the type of work to deal with. More efficiently with less effort.



ROTOR WITH 3 KNIVES

Y knives with a third central knife which allows to mulch shrubs up to 8 cm in diameter.



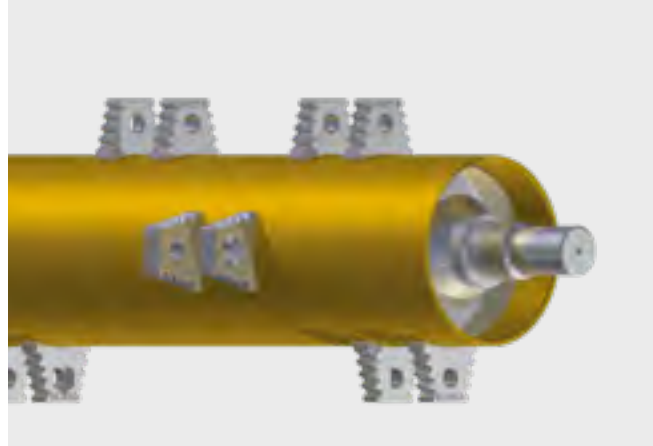
SEMIFOREST WITH ROTARY HAMMERS

Rotor with retractable rotating hammers specially designed to make more efficient the normal flail heads in the hard work of deforest. Designed by ORSI to allow small excavators, spiders and all those machines able to climb the huge slopes of the high mountains, to clean small spaces. Mountable as standard or as a spare part at a later time, it becomes the ideal friend when the going gets tough and the spaces are narrow and cramped.



FOREST ROTOR WITH ROTATING HAMMERS

Professional forest rotor for deforestation. Suitable for aggressive work of plants abatement up to 12 cm in diameter. It is also ideal for cleaning the floor. Using the tool in both working directions will be created a clean surface and free from dangerous protrusion.



FOREST ROTOR WITH FIXED TEETH

Professional FOREST rotor for big deforestation. Born with helicoidal system and two spirals, it uses interchangeable tools in tungsten. Maximum aggression and excellent performance make this rotor the most powerful tool for heavier works.

“VENTILATOR” ROTOR

Electronically balanced. Forest type tool holders moulded in boron steel

ROTOR WITH “FLANGES TOOL LIMITER” (FTL) TECHNOLOGY

Excellent performance and speed with less power requested.

The working depth of the tools is limited by steel flanges, reducing the requested power and still guaranteeing high performances.



1,2 ÷ 2,5 ton. /
2646 ÷ 5512 lbs






max Ø
2,5 cm / 2 in



A mulcher for mini excavators, equipped with a hammers or knives rotor.

The smallest mulcher in our construction range, designed for cleaning bushes and shrubs.

The mulcher can be equipped with either a standard 8 cc motor or with an 11 cc or 16 cc one, and it is intended to be used on 1.2 to 2.5 t excavators.

	RPM		
8 c.c.	2.500 - 3.000	20÷25 L - 5,3÷6,6 gal/min	220 max BAR/ 3190 PSI
11 c.c.	2.500 - 3.000	28÷33 L - 7,4÷8,7 gal/min	220 max BAR/ 3190 PSI
16 c.c.	2.500 - 3.000	40÷48 L - 10,6÷12,7 gal/min	220 max BAR/ 3190 PSI

BASIC 80

HYDRAULIC CUTTING HEAD



STRENGTH POINTS



REMOVABLE OSCILLATING PLATE



ORSI V3.1





DOUBLE-ROW BALL BEARINGS



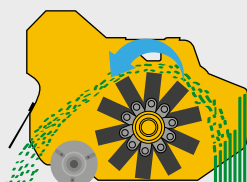
BASIC 80

PROFESSIONAL SERIES

BASIC 80		A	B
TECHNICAL SPECIFICATIONS			
Working width		80 cm / 31,5 in	80 cm / 31,5 in
Overall width		95 cm / 37,5 in	95 cm / 37,5 in
Machine weight*		75=100 kg / 166=221 lb	75=100 kg / 166=221 lb
Direct transmission		✓	✓
tools	 Knifes A max Ø 1,5 cm / 0,60 in	40	-
	 Hammers B max Ø 1,5 cm / 0,60 in	-	20

*variable weight based on the layout

BASIC 80	A	B
MACHINE		
Steel frame, compact and strong	✓	✓
Rear roller Ø 100 cm adjustable in height	✓	✓
Replaceable skids	✓	✓
Removable oscillating plate	✓	✓
Standard mounting brackets (no pins)	•	•
Adapters	•	•
TRANSMISSION		
VARISEAL engine with external drainage	✓	✓
Rotor with possibility of use 2 types of tools	✓	✓
Double-row ball bearings	✓	✓
Unidirectional rotor rotation	✓	✓
HYDRAULIC SYSTEM		
One way valve on return	✓	✓
ORSI V3.1-1/2: valve of max. pressure + anticavitation valve + flux regulator. 3 connecting hoses to the machine. Max backpressure on oil drainage = 12 BAR	✓	✓



Position of the self-cleaning rear roller for discharging the mulched product behind the roller for higher output





1,5 ÷ 4 ton. / max Ø 6/8 cm
 3307 ÷ 8819 lbs / 2,4/3,2 in



HARD 60		RPM		
	6 c.c.	3.166	19 L- 5 gal /min	160 max BAR/2321 PSI
	8 c.c.	3.100	26 L- 6,7 gal /min	160 max BAR/2321 PSI
	11 c.c.	3.330	36 L- 9,55 gal /min	160 max BAR/2321 PSI

HARD 60

HYDRAULIC CUTTING HEAD



STRENGTH POINTS




REMOVABLE OSCILLATING PLATE



DOUBLE-ROW BALL BEARINGS

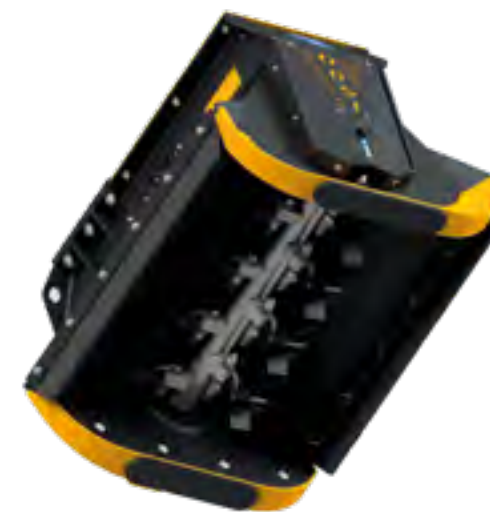
HARD 60

PROFESSIONAL SERIES

HARD 60		60
TECHNICAL SPECIFICATIONS		
Working width		60 cm / 23,7 in
Overall width		86 cm / 33,9 in
Machine weight*		120+130 kg / 266+287 lbs
Direct transmission		✓
tools	 max Ø 6/8 cm	16

*variable weight based on the layout

HARD 60	60
MACHINE	
Steel frame, compact and strong	✓
Replaceable skids	✓
Canvas rubber rear and front bumper	✓
Ø 60 mm rotor with triple-knife on shackles	✓
Protection chains	•
Removable oscillating plate	•
Wear counterskid	•
Standard mounting brackets (no pins)	•
Adapters	•
TRANSMISSION	
Reversible motor with internal drainage	✓
Double-row ball bearings	✓
Bidirectional rotor rotation	✓
HYDRAULIC SYSTEM	
Bidirectional valve anti-shock and anti-cavitation calibrated at 160 BAR - 2321 PSI 1/2"	✓





2,5 ÷ 7 ton.
55112 ÷ 15432 lb



max Ø 6/8 cm
2,4/3,2 in



HARD 80		RPM		
	8 c.c.	3.000	24 L- 6,4 gal /min	160 max BAR/2321 PSI
	11,2 c.c.	3.035	34 L- 9 gal /min	160 max BAR/2321 PSI
	16 c.c.	3.000	48 L- 12,7 gal /min	160 max BAR/2321 PSI
	20 c.c.	3.100	62 L- 16,4 gal /min	160 max BAR/2321 PSI

HARD 105		RPM		
	11,2 c.c.	3.035	34 L- 9 gal /min	160 max BAR/2321 PSI
	16 c.c.	3.000	48 L- 12,7 gal /min	160 max BAR/2321 PSI
	20 c.c.	3.100	62 L- 16,4 gal /min	160 max BAR/2321 PSI

HARD 60

HYDRAULIC CUTTING HEAD



STRENGTH POINTS




REMOVABLE OSCILLATING PLATE



DOUBLE-ROW BALL BEARINGS

HARD 80/105

PROFESSIONAL SERIES

HARD 80/105		80	105
TECHNICAL SPECIFICATIONS			
Working width		80 cm / 31,5 in	105 cm / 41,4 in
Overall width		105 cm / 41,4 in	130 cm / 51,2 in
Machine weight*		138 kg / 305 lbs	161 kg / 355 lbs
Direct transmission		✓	✓
tools	 max Ø 6/8 cm	24+12	32+16

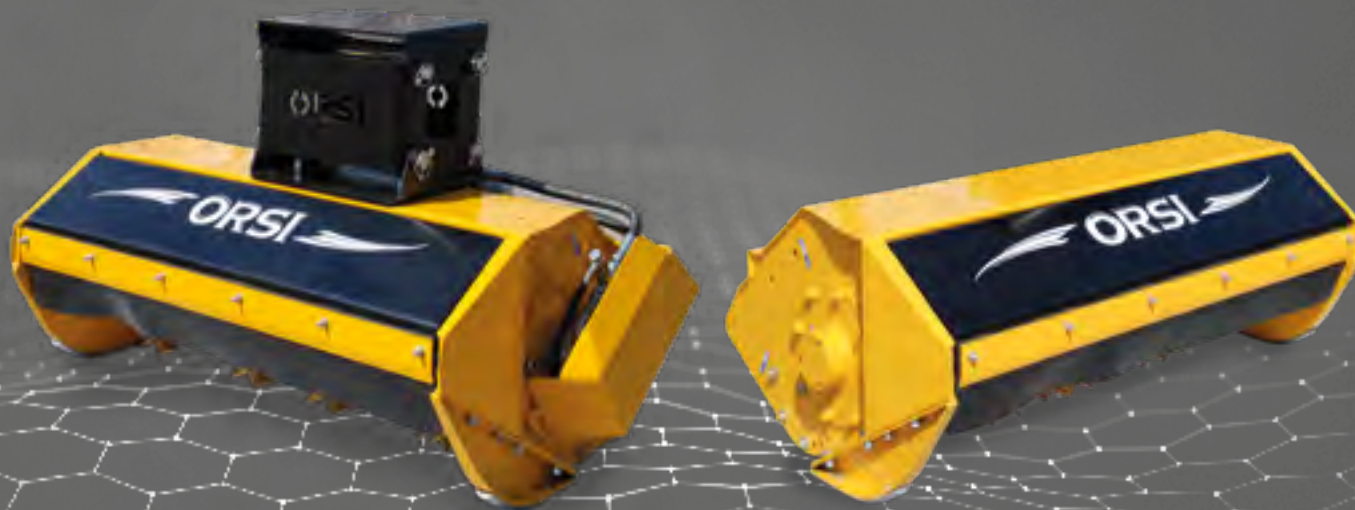
*variable weight based on the layout

HARD	80	105
MACHINE		
Steel frame, compact and strong	✓	✓
Replaceable skids	✓	✓
Canvas rubber rear and front bumper	✓	✓
Wear counterskid	✓	✓
Ø 60 mm rotor with triple-knife on shackles	✓	✓
Removable oscillating plate	•	•
Mechanical rotation 180°	•	•
Hydraulic rotation 180° (n°2 hydraulic hoses)	•	•
Standard mounting brackets (no pins)	•	•
Adapters	•	•
TRANSMISSION		
Reversible motor with internal drainage	✓	✓
Double-row ball bearings	✓	✓
Bidirectional rotor rotation	✓	✓
HYDRAULIC SYSTEM		
Bidirectional valve anti-shock and anti-cavitation calibrated at 160 BAR - 2321 PSI 1/2"	✓	✓








2,5 ÷ 7 ton. / 5500 ÷ 15400 lbs max Ø 5/8 cm / 2,4/3,2 in



A mulcher that can be equipped with either a 16 cc motor or with a 22 cc or 27 cc one, and it is intended to be used on excavators from 2.5 to 7 t. This mulcher is designed for cleaning bushes and shrubs up to 5 cm in size, and it has a wide range of tools.

The "BELT" version comes with a pulley transmission instead of a direct motor.

	RPM		
16 c.c.	2.500 - 3.000	40÷48 L - 11÷13 gal/min	220 max BAR/ 3190 PSI
22 c.c.	2.500 - 3.000	55÷65 L - 15÷18 gal/min	220 max BAR/ 3190 PSI
27 c.c.	2.500 - 3.000	68÷81 L - 18÷22 gal/min	220 max BAR/ 3190 PSI

 105 BELTS/125 BELTS only 22 c.c. or 27 c.c. motors

INDUSTRIAL

HYDRAULIC CUTTING HEAD



STRENGTH POINTS



REMOVABLE OSCILLATING PLATE



REAR ROLLER PROF Ø 140 mm
with 4 bearings with tapered rollers, mud scraper
and interchangeable central part.








ORSI V3.1



DOUBLE-ROW BALL BEARINGS

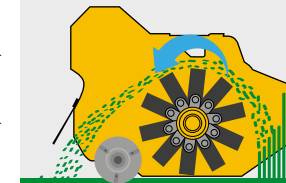


INDUSTRIAL		80	105	125	105 BELT	125 BELT
TECHNICAL SPECIFICATIONS						
Working width		80 cm / 31,5 in	105 cm / 42 in	125 cm / 50 in	105 cm / 42 in	125 cm / 50 in
Overall width total		105 cm / 42 in	130 cm / 51 in	150 cm / 60 in	125 cm / 50 in	145 cm / 57 in
Machine weight*		250+300 kg / 551÷662 lbs	270+320 kg / 595÷705 lbs	300+350 kg / 662÷772 lbs	270+320 kg / 595÷705 lbs	300+350 kg / 662÷772 lbs
Direct transmission		✓	✓	✓	-	-
Belts transmission		-	-	-	2 belts	2 belts
tools	 D max Ø 3 cm / 1,20 in	32	40	48	40	48
	 O max Ø 3 cm / 1,20 in	32	40	48	40	48
	 E max Ø 4 cm / 1,60 in	16	20	24	20	24
	 F max Ø 4 cm / 1,60 in	16	20	24	20	24
	 H max Ø 4 cm / 2 in	16	20	24	20	24

INDUSTRIAL	80	105	125	105 BELT	125 BELT
MACHINE					
Steel frame, compact and strong	✓	✓	✓	✓	✓
Rear roller Ø 140 mm with 4 tapered roller bearings and interchangeable central body thickness 6 mm, adjustable in height	✓	✓	✓	✓	✓
Replaceable skids	✓	✓	✓	✓	✓
Blade cutting system	✓	✓	✓	✓	✓
Front and rear protection rubber	✓	✓	✓	✓	✓
Removable oscillating plate	✓	✓	✓	✓	✓
Mechanical rotation 180° (A.)	•	•	•	•	•
Hydraulic rotation 180° (n°2 hydraulic hoses) (B.)	•	•	•	•	•
Standard mounting brackets (no pins)	•	•	•	•	•
Adapters	•	•	•	•	•
Coupler for loaders/ telescopic lifters/ backhoes	•	•	•	•	•
TRANSMISSION					
VARISEAL engine with external drainage	✓	✓	✓	✓	✓
"Helicocut" rotor	✓	✓	✓	✓	✓
Double-row ball bearings	✓	✓	✓	✓	✓
Unidirectional rotor rotation	✓	✓	✓	✓	✓
HYDRAULIC SYSTEM					
One way valve on return	✓	✓	✓	✓	✓
ORSI V3.1-1/2: valve of max. pressure + anticavitation valve + flux regulator. 3 connecting hoses to the machine. Max backpressure on oil drainage = 12 BAR with engine 16-22 cc.	✓	✓	✓	✓	✓
ORSI V3.1-3/4: valve of max. pressure + anticavitation valve + flux regulator. 3 connecting hoses to the machine. Max backpressure on oil drainage = 12 BAR with engine 27 cc.	✓	✓	✓	✓	✓

INDUSTRIAL

PROFESSIONAL SERIES



Position of the self-cleaning rear roller for discharging the mulched product behind the roller for higher output



MULTI-KNIFE ROTOR
A: Ø 102 x 12,5 mm



C./D.



A.

B.



5 ÷ 12 ton. /
11023÷26456 in






max Ø
8 cm / 3,2 in



A HARDOX machine that can be equipped with a 22 cc, 27 cc or 38 cc motor, and it is intended to be used on excavators from 5 to 12 t.

Designed for cleaning bushes, shrubs and wood up to 10 cm in size, with a wide range of tools and also the possibility to equip a semi-forestry rotor.

	RPM		
22 c.c.	2.500 - 3.000	55÷65 L - 15÷18 gal/min	250 max BAR/3626 PSI
27 c.c.	2.500 - 3.000	68÷81 L - 18÷22 gal/min	250 max BAR/3626 PSI
38 c.c.	2.500 - 3.000	95÷115 L - 25÷30,3 gal/min	250 max BAR/3626 PSI

PROFESSIONAL

HYDRAULIC CUTTING HEAD



STRENGTH POINTS



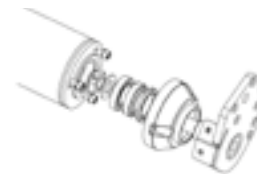
REMOVABLE OSCILLATING PLATE



INTERNAL DOUBLE FRAME
+ STATIC KNIVES IN HARDOX



HELICOIDAL ROTOR "HELICOCUT"






REAR ROLLER PROF Ø 140 mm
with 4 bearings with tapered rollers, mud scraper
and interchangeable central part.



ORSI V3.1



DOUBLE-ROW BALL BEARINGS

PROFESSIONAL	105	125	150	125	125	180
						

TECHNICAL SPECIFICATIONS

Working width	105 cm / 42 in	125 cm / 50 in	150 cm / 60 in	125 cm / 50 in	125 cm / 50 in	180 cm / 71 in
Overall width total	135 cm / 53 in	155 cm / 61 in	180 cm / 71 in	155 cm / 61 in	155 cm / 61 in	210 cm / 82,7 in
Machine weight*	380+430 kg / 838+948 lbs	420+490 kg / 926+1080 lbs	480+530 kg / 1058+1169 lbs	420+490 kg / 926+1080 lbs	420+490 kg / 926+1080 lbs	540+590 kg / 1191+1301 lbs
Direct transmission	✓	✓	✓	✓	✓	✓
tools	C max Ø 3 cm / 1,20 in	32	48	72	-	-
	G max Ø 4 cm / 1,60 in	16	24	36	-	-
	B max Ø 4 cm / 1,60 in	16	24	36	-	-
	M max Ø 6 cm / 2,4 in	16	24	36	-	-
	P max Ø 5 cm / 2 in	-	-	-	40	-
	Q max Ø 5 cm / 2 in	-	-	-	40+20	-
	T max Ø 8/10 cm / 3,2/4 in	-	-	-	-	20

PROFESSIONAL	105	125	150	180
--------------	-----	-----	-----	-----

MACHINE

Steel frame with internal counter-frame (double frame)	✓	✓	✓	✓
Static knife in Hardox and blade cutting system	✓	✓	✓	✓
Rear roller Ø 140 mm (5,6 in) with 4 tapered roller bearings and interchangeable central body thickness 6 mm, adjustable in height	✓	✓	✓	✓
Replaceable skids	✓	✓	✓	✓
Front and rear protection rubber	✓	✓	✓	✓
Removable oscillating plate	✓	✓	✓	✓
Protection chains	•	•	•	•
Mechanical rotation 180° (A.)	•	•	•	•
Hydraulic rotation 180° (n°2 hydraulic hoses) (B.)	•	•	•	•
Standard mounting brackets (no pins)	•	•	•	•
Adapters	•	•	•	•
Coupler for loaders/ telescopic lifters/ backhoes	•	•	•	•
Hydraulic openable bonnet with machine already set up	•	•	•	•

TRANSMISSION

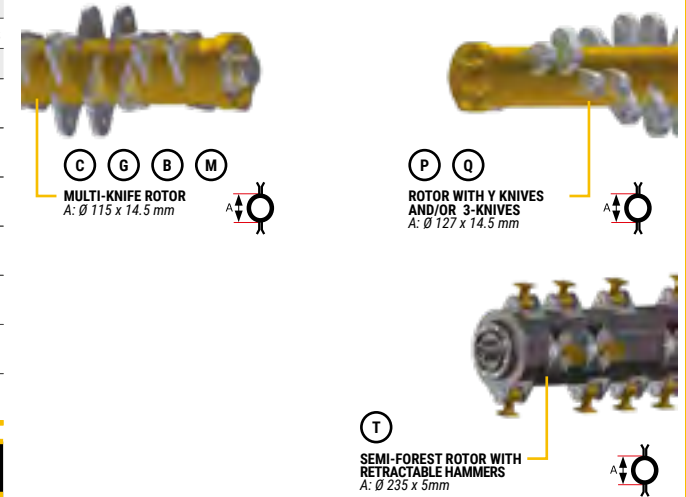
VARISEAL engine with external drainage	✓	✓	✓	✓
"Helicocut" rotor	✓	✓	✓	✓
Double-row ball bearings	✓	✓	✓	✓
Unidirectional rotor rotation	✓	✓	✓	✓

HYDRAULIC SYSTEM

One way valve on return	✓	✓	✓	✓
ORSI V3.1-3/4: valve of max. pressure + anticavitation valve + flux regulator. 3 connecting hoses to the machine. Max backpressure on oil drainage = 12 BAR	✓	✓	✓	✓

PROFESSIONAL

PROFESSIONAL SERIES








8 ÷ 15 ton. / max Ø 8/10 cm
17637 ÷ 33070 lbs 3,2 / 4 in



A HARDOX machine that can be equipped with either a 22 cc or with a 27 cc or 38 cc motor, and it is intended to be used on excavators from 5 to 12 t.

Designed for cleaning bushes, shrubs and wood up to 10 cm in size, with a wide range of tools and also the possibility to equip a semi-forestry rotor. This version comes with a pulley transmission for a greater strength of the rotor during the work.

	RPM		
22 c.c.	2.500 - 3.000	55÷65 L/min	250 max BAR
27 c.c.	2.500 - 3.000	68÷81 L/min	250 max BAR
38 c.c.	2.500 - 3.000	95÷115 L/min	250 max BAR

PROFESSIONAL *BELT*

HYDRAULIC CUTTING HEAD



STRENGTH POINTS



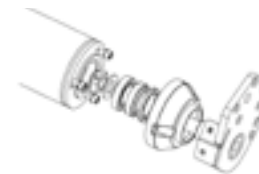
REMOVABLE OSCILLATING PLATE



INTERNAL DOUBLE FRAME + STATIC KNIVES IN HARDOX



HELICOIDAL ROTOR "HELICOCUT"






REAR ROLLER PROF Ø 140 mm
with 4 bearings with tapered rollers, mud scraper and interchangeable central part.



ORSI V3.1



DOUBLE-ROW BALL BEARINGS

PROFESSIONAL BELT	105	125	150	125	125	180
						

TECHNICAL SPECIFICATIONS

Working width	105 cm / 42 in	125 cm / 50 in	150 cm / 60 in	125 cm / 50 in	125 cm / 50 in	180 cm / 71 in
Overall width total	135 cm / 53 in	145 cm / 57 in	170 cm / 67 in	145 cm / 57 in	145 cm / 57 in	200 cm / 79 in
Machine weight*	390=440 kg / 860=970 lbs	430=500 kg / 948=1102 lbs	490=540 kg / 1080=1190 lbs	430=500 kg / 948=1102 lbs	430=500 kg / 948=1102 lbs	550=600 kg / 1213=1323 lbs
Belts transmission	3 belts	3 belts	3 belts	3 belts	3 belts	3 belts
tools	C max Ø 3 cm / 1,20 in	32	48	72	-	-
	G max Ø 4 cm / 1,60 in	16	24	36	-	-
	B max Ø 4 cm / 1,60 in	16	24	36	-	-
	M max Ø 6 cm / 2,4 in	16	24	36	-	-
	P max Ø 5 cm / 2 in	-	-	-	40	-
	Q max Ø 5 cm / 2 in	-	-	-	40+20	-
	T max Ø 8/10 cm / 3,2/4 in	-	-	-	-	20

PROFESSIONAL BELT	105	125	150	180
-------------------	-----	-----	-----	-----

MACHINE

Steel frame with internal counter-frame (double frame)	✓	✓	✓	✓
Static knife in Hardox and blade cutting system	✓	✓	✓	✓
Rear roller Ø 140 mm with 4 tapered roller bearings and interchangeable central body thickness 6 mm, adjustable in height	✓	✓	✓	✓
Replaceable skids	✓	✓	✓	✓
Front and rear protection rubber	✓	✓	✓	✓
Removable oscillating plate	✓	✓	✓	✓
Protection chains	•	•	•	•
Mechanical rotation 180° (A.)	•	•	•	•
Hydraulic rotation 180° (n°2 hydraulic hoses) (B.)	•	•	•	•
Standard mounting brackets (no pins)	•	•	•	•
Adapters	•	•	•	•
Coupler for loaders/ telescopic lifters/ backhoes	•	•	•	•
Hydraulic openable bonnet with machine already set up	•	•	•	•

TRANSMISSION

VARISEAL engine with external drainage	✓	✓	✓	✓
"Helicocut" rotor	✓	✓	✓	✓
Belt transmission	✓	✓	✓	✓
Double-row ball bearings	✓	✓	✓	✓
Unidirectional rotor rotation	✓	✓	✓	✓

HYDRAULIC SYSTEM

One way valve on return	✓	✓	✓	✓
ORSI V3.1-3/4: valve of max. pressure + anticavitation valve + flux regulator. 3 connecting hoses to the machine. Max backpressure on oil drainage = 12 BAR	✓	✓	✓	✓

PROFESSIONAL BELT

PROFESSIONAL SERIES



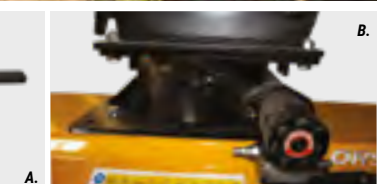
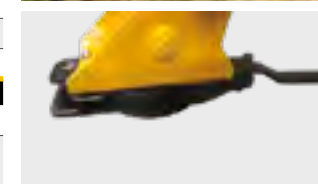
C G B M
MULTI-KNIFE ROTOR
A: Ø 115 x 14.5 mm



P Q
ROTOR WITH Y KNIVES
AND/OR 3-KNIVES
A: Ø 127 x 14.5 mm



T
SEMI-FOREST ROTOR WITH
RETRACTABLE HAMMERS
A: Ø 235 x 5mm








8 ÷ 15 ton. /
17637 ÷ 33070 lbs



max Ø
10 cm / 4 in



A HARDOX machine equipped with either a 35 cc or a 44 cc axial piston motor, and it is intended to be used on excavators from 8 to 15 t. Designed for cleaning bushes, shrubs and wood up to 10 cm in size, with a wide range of tools and also the possibility to equip a semi-forestry rotor.

	RPM		
35 c.c.	2.500 - 3.000	85÷100 L-22,5÷26,5 gal/min	350 max BAR/5076 PSI
44 c.c.	2.500 - 3.000	110÷120 L-29÷31,7 gal/min	350 max BAR/5076 PSI

PROFESSIONAL PISTON

HYDRAULIC CUTTING HEAD



STRENGTH POINTS



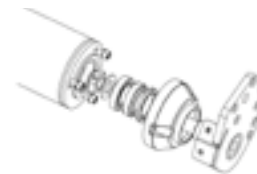
REMOVABLE OSCILLATING PLATE



INTERNAL DOUBLE FRAME
+ STATIC KNIVES IN HARDOX



HELICOIDAL ROTOR "HELICOCUT"



REAR ROLLER PROF Ø 140 mm
with 4 bearings with tapered rollers, mud scraper
and interchangeable central part.



ORSI V3.1



DOUBLE-ROW BALL BEARINGS

PROFESSIONAL PISTON	105	125	150	125	125	180
						

TECHNICAL SPECIFICATIONS

Working width	105 cm / 42 in	125 cm / 50 in	150 cm / 60 in	125 cm / 50 in	125 cm / 50 in	180 cm / 71 in
Overall width total	125 cm / 50 in	145 cm / 57 in	170 cm / 67 in	145 cm / 57 in	145 cm / 57 in	200 cm / 79 in
Machine weight*	390=440 kg / 860=970 lbs	430=500 kg / 948=1102 lbs	490=540 kg / 1080=1190 lbs	430=500 kg / 948=1102 lbs	430=500 kg / 948=1102 lbs	550=600 kg / 1213=1323 lbs
Belts transmission	1 belt	1 belt	1 belt	1 belt	1 belt	1 belt
tools	C max Ø 3 cm / 1,20 in	32	48	72	-	-
	G max Ø 4 cm / 1,60 in	16	24	36	-	-
	B max Ø 4 cm / 1,60 in	16	24	36	-	-
	M max Ø 6 cm / 2,4 in	16	24	36	-	-
	P max Ø 5 cm / 5 in	-	-	-	40	-
	Q max Ø 5 cm / 5 in	-	-	-	40+20	-
	T max Ø 8/10 cm / 3,2/4 in	-	-	-	-	20

PROFESSIONAL PISTON	105	125	150	180
---------------------	-----	-----	-----	-----

MACHINE

Steel frame with internal counter-frame (double frame)	✓	✓	✓	✓
Static knife in Hardox and blade cutting system	✓	✓	✓	✓
Rear roller Ø 140 mm with 4 tapered roller bearings and interchangeable central body thickness 6 mm, adjustable in height	✓	✓	✓	✓
Replaceable skids	✓	✓	✓	✓
Front and rear protection rubber	✓	✓	✓	✓
Removable oscillating plate	✓	✓	✓	✓
Protection chains	•	•	•	•
Mechanical rotation 180° (A.)	•	•	•	•
Hydraulic rotation 180° (n°2 hydraulic hoses) (B.)	•	•	•	•
Standard mounting brackets (no pins)	•	•	•	•
Adapters	•	•	•	•
Coupler for loaders/ telescopic lifters/ backhoes	•	•	•	•
Hydraulic openable bonnet with machine already set up	•	•	•	•

TRANSMISSION

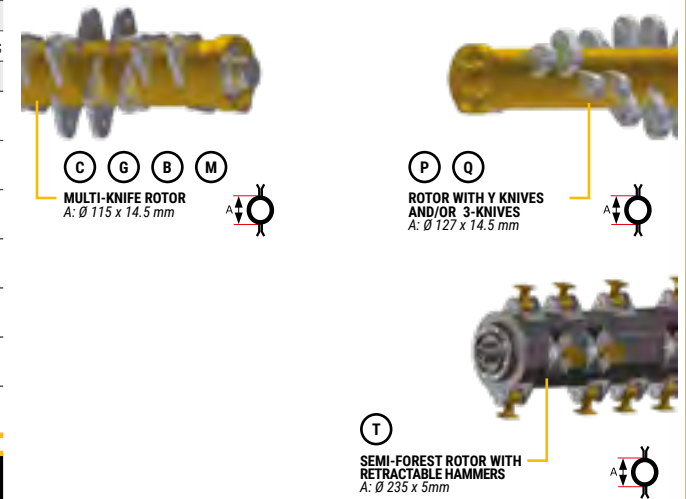
Unidirectional engine at axial pistons with external drainage	✓	✓	✓	✓
"Helicocut" rotor	✓	✓	✓	✓
Transmission with toothed belt in kevlar on toothed pulleys	✓	✓	✓	✓
Double-row ball bearings	✓	✓	✓	✓
Unidirectional rotor rotation	✓	✓	✓	✓

HYDRAULIC SYSTEM

One way valve on return	✓	✓	✓	✓
ORSI V3 1-3/4 which includes valve of max. pressure + anticavitation valve + flow regulator. 3 connecting hoses to the machine. Max backpressure on oil drainage = 2 BAR	✓	✓	✓	✓

PROFESSIONAL PISTON

PROFESSIONAL SERIES








10 ÷ 20 ton. /
22046 ÷ 44093 lbs



max Ø
10 cm / 4 in

A HARDOX machine with axial piston motor that can be equipped with either a 35 cc or 44 cc motor, and it is intended to be used on excavators from 10 to 20 t.

Designed for cleaning bushes, shrubs and wood up to 10 cm in size, with a wide range of tools and also the possibility to equip a semi-forestry rotor.

		RPM		
	PISTON			
L	35 c.c.	2.150 - 2.600	85÷95 L 22,5÷25 gal/min	350 max BAR/ 5076 PSI
	44 c.c.	2.150 - 2.700	105÷115 L 27,7÷30,4 gal/min	350 max BAR/ 5076 PSI
C G B M P Q T	35 c.c.	2.600 - 3.000	91÷105 L 24÷27,7 gal/min	350 max BAR/5076 PSI
	44 c.c.	2.600 - 3.000	115÷120 L 30,4÷31,7 gal/min	350 max BAR/ 5076 PSI

TP HARDOX *PISTON*

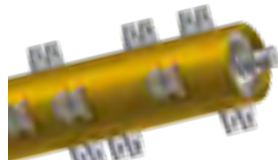
HYDRAULIC CUTTING HEAD



STRENGTH POINTS



**INTERNAL FRAME +DOUBLE
COUNTER KNIVES IN HARDOX**



"VENTILATOR" ROTOR Ø 194x10 mm
electronically balanced. Forest type tool holders
moulded in boron steel



ORSI V3.1



DOUBLE-ROW BALL BEARINGS

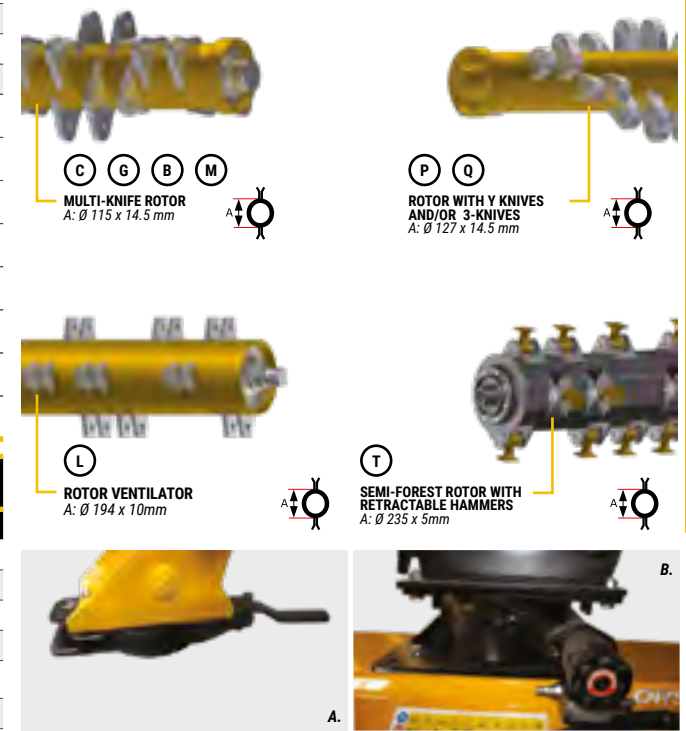
TP HARDOX <i>PISTON</i>	125	125	125	125 <i>FORREST</i>
				

TECHNICAL SPECIFICATIONS				
Working width	125 cm / 50 in	125 cm / 50 in	125 cm / 50 in	125 cm / 50 in
Overall width total	155 cm / 61 in	155 cm / 61 in	155 cm / 61 in	155 cm / 61 in
Machine weight*	470+540 kg	430+480 kg	490+550 kg	470+540 kg
Belts transmission	1 toothed belt	1 toothed belt	1 toothed belt	1 toothed belt
tools	C max Ø 3 cm / 1,20 in	48	-	-
	G max Ø 4 cm / 1,60 in	24	-	-
	B max Ø 4 cm / 1,60 in	24	-	-
	M max Ø 6 cm / 2,4 in	24	-	-
	P max Ø 5 cm / 2 in	-	40	-
	Q max Ø 5 cm / 2 in	-	40+20	-
	L max Ø 8/10 cm / 1,2/4 in	-	-	12
	T max Ø 8/10 cm / 1,2/4 in	-	-	-

TP HARDOX <i>PISTON</i>	125	125 <i>FORREST</i>
MACHINE		
Reinforced monocoque frame th. 5 mm in Hardox	✓	✓
Reinforced sides th. 6 mm	✓	✓
2 bars of counter - knife for fine shredding	✓	✓
Replaceable skids with adjustable and replaceable pads	✓	✓
Professional rear roller Ø 195 mm with 4 taper roller bearings and central body interchangeable	✓	✓
Removable oscillating plate	✓	✓
Mechanical rotation 180° (A.)	•	•
Hydraulic rotation 180° (n°2 hydraulic hoses) (B.)	•	•
Hydraulic openable bonnet with machine already set up	•	•
Standard mounting brackets (no pins)	•	•
Adapters	•	•
Coupler for loaders/ telescopic lifters/ backhoes	•	•
TRANSMISSION		
Unidirectional engine at axial pistons with external drainage	✓	✓
Double-row ball bearings	✓	✓
"Helicocut" rotor	✓	-
Semi-forest rotor with rotating hammers with tool "T"	-	✓
HYDRAULIC SYSTEM		
One way valve on return	✓	✓
ORSI V3.1-3/4 which includes valve of max. pressure + anticavitation valve + flow regulator. 3 connecting hoses to the machine. Max backpressure on oil drainage = 2 BAR	✓	✓

TP HARDOX PISTON

PROFESSIONAL SERIES








10 ÷ 20 ton. /
22046 ÷ 44093 lbs



max Ø
5 cm / 2 in



A HARDOX machine with pulley transmission that can be equipped with either 27 cc, 38 cc, 51 cc or 61 cc motor, which is intended to be used on excavators from 10 to 20 t. Designed for cleaning bushes, shrubs and wood up to 6 cm in size, equipped with a hammers or knives rotor.

	RPM		
27 c.c.	2.300 - 2.500	43÷50 L / 11÷13 gal/min	250 max BAR/3626 PSI
38 c.c.	2.300 - 2.500	60÷70 L / 15,8÷18,5 gal/min	250 max BAR/3626 PSI
51 c.c.	2.300 - 2.500	80÷90 L / 21,2÷23,8 gal/min	250 max BAR/3626 PSI
61 c.c.	2.100 - 2.350	90÷100 L / 23,8÷26,4 gal/min	250 max BAR/3626 PSI

WT BELTS

HYDRAULIC CUTTING HEAD



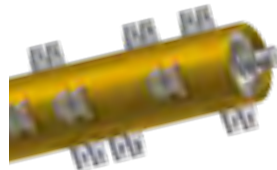
STRENGTH POINTS



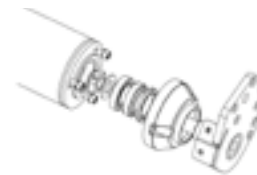
REMOVABLE OSCILLATING PLATE



INTERNAL DOUBLE FRAME
+ STATIC KNIVES IN HARDOX



"VENTILATOR" ROTOR
electronically balanced. Forest type tool holders
moulded in boron steel



REAR ROLLER PROF Ø 140 mm
with 4 bearings with tapered rollers, mud scraper
and interchangeable central part.

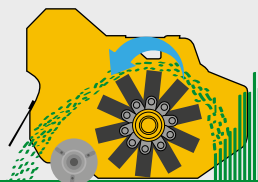


ORSI V3.1



DOUBLE-ROW SELF-ALIGNING
ROLLER BEARINGS

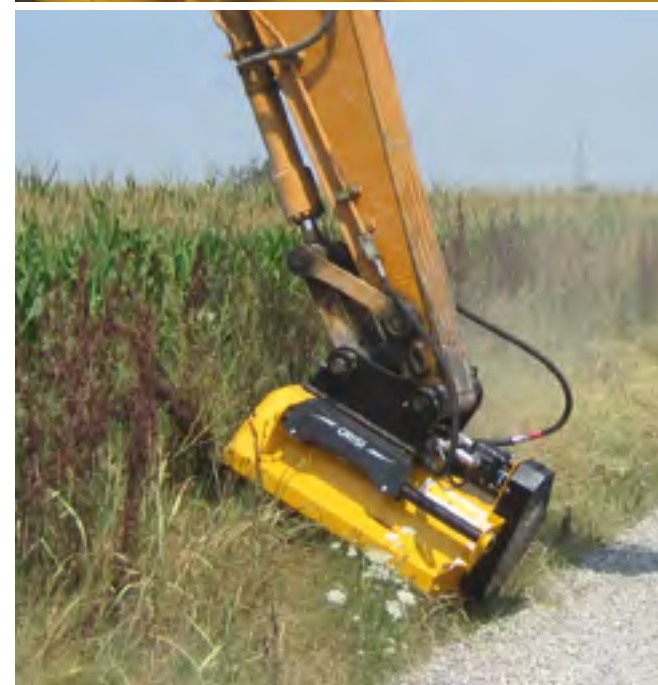
WT BELTS		135	165	180	200	220
TECHNICAL SPECIFICATIONS						
Working width		135 cm / 53 in	162 cm / 64 in	181 cm / 71 in	201 cm / 79 in	221 cm / 87 in
Overall width		155 cm / 61 in	180 cm / 71 in	200 cm / 79 in	220 cm / 87 in	240 cm / 94 in
Machine weight*		560÷660 kg / 1235 ÷1455 lbs	600÷700 kg / 1323÷1543lbs	640÷740 kg/ 1411÷1631 lbs	680÷780 kg/ 1499÷1720 lbs	750÷850 kg/ 1653÷1874 lbs
Belts transmission		4 belts	4 belts	4 belts	4 belts	4 belts
tools	 Knives A max Ø 3 cm	36	36	48	48	48
	 Hammers B max Ø 5/6 cm	12	12	16	16	16



Position of the self-cleaning rear roller for discharging the mulched product behind the roller for higher output



WT BELTS		135	165	180	200	220
MACHINE						
Steel frame with internal Hardox frame (double frame)		✓	✓	✓	✓	✓
Static knife in Hardox and blade cutting system		✓	✓	✓	✓	✓
Rear roller Ø 140 mm with 4 tapered roller bearings and interchangeable central body thickness 6 mm, adjustable in height		✓	✓	✓	✓	✓
Front protection flaps		✓	✓	✓	✓	✓
Removable oscillating plate		✓	✓	✓	✓	✓
Protection chains		•	•	•	•	•
Replaceable skids		•	•	•	•	•
Hydraulic rotation 180° (n°2 hydraulic hoses)		•	•	•	•	•
Standard mounting brackets (no pins)		•	•	•	•	•
Adapters		•	•	•	•	•
TRANSMISSION						
VARISEAL engine with external drainage		✓	✓	✓	✓	✓
Ventilator rotor		✓	✓	✓	✓	✓
Toothed belt transmission		✓	✓	✓	✓	✓
Double-row self-aligning roller bearings		✓	✓	✓	✓	✓
Automatic belt tensioner		✓	✓	✓	✓	✓
Unidirectional rotor rotation		✓	✓	✓	✓	✓
HYDRAULIC SYSTEM						
One way valve on return		✓	✓	✓	✓	✓
ORSI V3.1-3/4 which includes valve of max. pressure + anticavitation valve + flow regulator. 3 connecting hoses to the machine. Max backpressure on oil outgoing = 12 BAR		✓	✓	✓	✓	✓





10 ÷ 20 ton. /
22046 ÷ 44093 lbs



max Ø
5 cm / 2 in



A HARDOX machine equipped with a 35 cc or a 44 cc axial piston motor, intended to be used on excavators from 10 to 20 t. Designed for cleaning bushes, shrubs and wood up to 6 cm in size.

	RPM		
35 c.c.	2.300 - 2.500	56÷65 L / 15÷17 gal/min	350 max BAR/5076 PSI
44 c.c.	2.300 - 2.500	70÷80 L / 18÷21 gal/min	350 max BAR/5076 PSI

WT PISTON

HYDRAULIC CUTTING HEAD



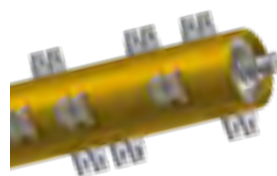
STRENGTH POINTS



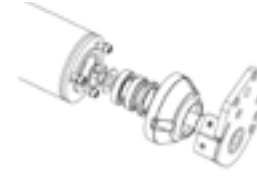
REMOVABLE OSCILLATING PLATE



INTERNAL DOUBLE FRAME + STATIC KNIVES IN HARDOX



"VENTILATOR" ROTOR
electronically balanced. Forest type tool holders moulded in boron steel



REAR ROLLER PROF Ø 140 mm
with 4 bearings with tapered rollers, mud scraper and interchangeable central part.





ORSI V3.1

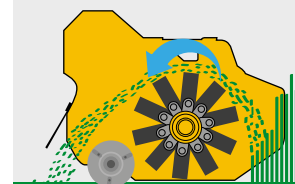


DOUBLE-ROW SELF-ALIGNING ROLLER BEARINGS

WT PISTON

PROFESSIONAL SERIES

WT PISTON		135	165	180	200	220	255
TECHNICAL SPECIFICATIONS							
Working width		135 cm / 53 in	162 cm / 64 in	181 cm / 71 in	201 cm / 79 in	221 cm / 87 in	253 cm / 100 in
Overall width		155 cm / 61 in	180 cm / 71 in	200 cm / 79 in	220 cm / 87 in	240 cm / 94 in	268 cm / 106 in
Machine weight*		560÷660 kg / 1235 ÷ 1455 lbs	600÷700 kg / 1323÷1543 lbs	640÷740 kg / 1411÷1631 lbs	680÷780 kg / 1499÷1720 lbs	750÷850 kg / 1653÷1874 lbs	790÷890 kg / 1742÷1962 lbs
Belts transmission		4 belts	4 belts	4 belts	4 belts	4 belts	4 belts
tools	 Knives A max Ø 3 cm	36	36	48	48	48	60
	 Hammers B max Ø 5/6 cm	12	12	16	16	16	20



Position of the self-cleaning rear roller for discharging the mulched product behind the roller for higher output



WT PISTON	135	165	180	200	220	NEW 255
MACHINE						
Steel frame with internal Hardox frame (double frame)	✓	✓	✓	✓	✓	✓
Static knife in Hardox and blade cutting system	✓	✓	✓	✓	✓	✓
Rear roller Ø 140 mm with 4 tapered roller bearings and interchangeable central body thickness 6 mm, adjustable in height	✓	✓	✓	✓	✓	✓
Front protection flaps	✓	✓	✓	✓	✓	✓
Removable oscillating plate	✓	✓	✓	✓	✓	✓
Protection chains	•	•	•	•	•	•
Replaceable skids	•	•	•	•	•	•
Hydraulic rotation 180° (n°2 hydraulic hoses)	•	•	•	•	•	•
Standard mounting brackets (no pins)	•	•	•	•	•	•
Adapters	•	•	•	•	•	•
TRANSMISSION						
Unidirectional engine at axial pistons with external drainage	✓	✓	✓	✓	✓	✓
Ventilator rotor	✓	✓	✓	✓	✓	✓
Belt transmission	✓	✓	✓	✓	✓	✓
Double-row self-aligning roller bearings	✓	✓	✓	✓	✓	✓
Automatic belt tensioner	✓	✓	✓	✓	✓	✓
Unidirectional rotor rotation	✓	✓	✓	✓	✓	✓
HYDRAULIC SYSTEM						
One way valve on return	✓	✓	✓	✓	✓	✓
ORSI V3.1-34 which includes valve of max. pressure + anticavitation valve + flow regulator. 3 connecting hoses to the machine. Max backpressure on oil drainage = 2 BAR	✓	✓	✓	✓	✓	✓



3,5 ÷ 8 ton.
7716 ÷ 17637 lbs






max Ø
8 cm / 3,2 in



SEMI FORREST IND line, a mulcher for excavators. A machine designed for cleaning bushes, shrubs and wood up to 8 cm in size, with a wide range of tools.

Available with a motor of 16 cc, 22 cc or 27 cc, for medium-sized excavators from 3.5 to 7 t.

	RPM		
16 c.c.	2.500 - 3.000	40÷48 L - 10,6÷12,7 gal/min	250 max BAR/3626 PSI
22 c.c.	2.500 - 3.000	55÷65 L - 15÷18 gal/min	250 max BAR/3626 PSI
27 c.c.	2.500 - 3.000	68÷81 L - 18÷22 gal/min	250 max BAR/3626 PSI

SEMI FORREST IND

FOREST HYDRAULIC CUTTING HEAD



STRENGTH POINTS



INTERNAL DOUBLE FRAME + STATIC KNIVES IN HARDOX



HELICOIDAL ROTOR "HELICOCUT"




ORSI V3.1



DOUBLE-ROW BALL BEARINGS

SEMI FORREST *IND*

PROFESSIONAL SERIES

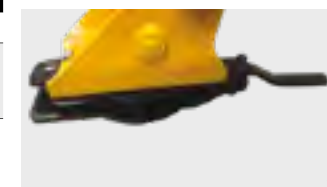
SEMI FORREST <i>IND</i>	80	105
		

TECHNICAL SPECIFICATIONS			
Working width	80 cm / 31,5 in	105 cm / 42 in	
Overall width total	133 cm / 52,4 in	133 cm / 52,4 in	
Machine weight*	250+300 kg / 551+661 lbs	320+380 kg / 706+838 lbs	
Direct transmission	✓	✓	
tools	D max Ø 3 cm / 1,2 in	32	40
	O max Ø 3 cm / 1,2 in	32	40
	E max Ø 4 cm / 1,6 in	16	20
	F max Ø 4 cm / 1,6 in	16	20
	N max Ø 6 cm / 2,4 in	16	20

SEMI FORREST <i>IND</i>	80	105
MACHINE		
Steel frame with internal Hardox frame (double frame)	✓	✓
Static knife in Hardox and blade cutting system	✓	✓
Replaceable skids with adjustable and replaceable pads	✓	✓
Front and rear protection chains	✓	✓
Mechanical rotation 180° (A.)	•	•
Hydraulic rotation 180° (n°2 hydraulic hoses) (B.)	•	•
Standard mounting brackets (no pins)	•	•
Adapters	•	•
TRANSMISSION		
VARISEAL engine with external drainage	✓	✓
"Helicocut" rotor	✓	✓
Double-row ball bearings	✓	✓
Unidirectional rotor rotation	✓	✓
HYDRAULIC SYSTEM		
One way valve on return	✓	✓
ORSI V3.1-1/2: valve of max. pressure + anticavitation valve + flux regulator. 3 connecting hoses to the machine. Max backpressure on oil drainage = 12 BAR with engine 16-22 cc	✓	✓
ORSI V3.1-3/4: engine 27 cc valve of max. pressure + anticavitation valve + flux regulator. 3 connecting hoses to the machine. Max backpressure on oil drainage = 12 BAR with engine 27 cc	✓	✓



DOEFN
MULTI-KNIFE ROTOR
A: Ø 115 x 14.5 mm





3,5 ÷ 7 ton. /
7716 ÷ 15432 lbs






max Ø
8 cm / 3,2 in



New SEMI FORREST IND line, a mulcher for excavators with our "Flanges Tool Limiter" technology, with special steel profiles that limit the tools' depth of action, reducing the power demand and ensuring working speed and exceptional performance. A machine designed for cleaning bushes, shrubs and wood up to 8 cm in size, with a wide range of tools.

Available with a motor of 16 cc, 22 cc or 27 cc, for medium-sized excavators from 3.5 to 7 t.

	RPM		
16 c.c.	2.500 - 3.000	40÷48 L - 10,6÷12,7 gal/min	250 max BAR/3626 PSI
22 c.c.	2.500 - 3.000	55÷65 L - 15÷18 gal/min	250 max BAR/3626 PSI
27 c.c.	2.500 - 3.000	68÷81 L - 18÷22 gal/min	250 max BAR/3626 PSI

SEMI FORREST *IND FTL*

FOREST HYDRAULIC CUTTING HEAD



STRENGTH POINTS



INTERNAL DOUBLE FRAME
+ STATIC KNIVES IN HARDOX



ROTOR WITH "FLANGES TOOL LIMITER"
(FTL) TECHNOLOGY






ORSI V3.1



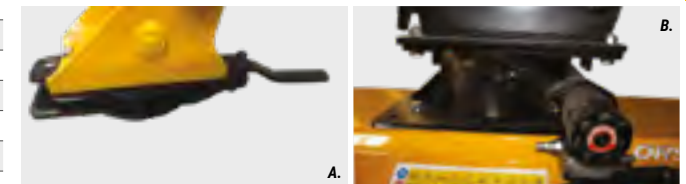
DOUBLE-ROW BALL BEARINGS

SEMI FORREST *IND FTL*

PROFESSIONAL SERIES

SEMI FORREST <i>IND FTL</i>		80 <i>FTL</i>	105 <i>FTL</i>
			
TECHNICAL SPECIFICATIONS			
Working width		80 cm / 31,5 in	105 cm / 42 in
Overall width total		133 cm / 52,4 in	133 cm / 52,4 in
Machine weight*		280÷330 kg / 617÷728 lbs	350÷410 kg / 772÷904 lbs
Direct transmission		✓	✓
tools	 T17 <i>standard</i> <i>max Ø 8 cm/3,2 in</i>	10 + 2	16 + 2
	 T21 <i>with tungsten carbide</i> <i>optional</i>	10 + 2	16 + 2

SEMI FORREST <i>IND FTL</i>	80 <i>FTL</i>	105 <i>FTL</i>
MACHINE		
Steel frame with internal Hardox frame (double frame)	✓	✓
Static knife in Hardox and blade cutting system	✓	✓
Replaceable skids with adjustable and replaceable pads	✓	✓
Front and rear protection chains	✓	✓
Supplement for rotor with hammers T21 with tungsten carbide	•	•
Mechanical rotation 180° (A.)	•	•
Hydraulic rotation 180° (n°2 hydraulic hoses) (B.)	•	•
Standard mounting brackets (no pins)	•	•
Adapters	•	•
TRANSMISSION		
VARISEAL engine with external drainage	✓	✓
Rotor with "flanges tool limiter" (FTL) technology	✓	✓
Double-row ball bearings	✓	✓
Unidirectional rotor rotation	✓	✓
HYDRAULIC SYSTEM		
One way valve on return	✓	✓
ORSI V3.1-1/2: valve of max. pressure + anticavitation valve + flux regulator. 3 connecting hoses to the machine. Max backpressure on oil drainage = 12 BAR with engine 16-22 cc	✓	✓
ORSI V3.1-3/4: engine 27 cc valve of max. pressure + anticavitation valve + flux regulator. 3 connecting hoses to the machine. Max backpressure on oil drainage = 12 BAR with engine 27 cc	✓	✓





5 ÷ 12 t
11023 ÷ 26456 lbs






max Ø
8/10 cm
3,2/4 in



SEMI FORREST PROF mulcher for excavators a machine designed for cleaning bushes, shrubs and wood up to 8 cm in size, with a wide range of tools.

This machine comes with a pulley transmission, for higher performances.

Available with motors of 22 cc, 27 cc or 38 cc, ideal for excavators from 5 to 12 t.

	RPM		
22 c.c.	2.500 - 3.000	55÷65 L - 15÷18 gal/min	250 max BAR/3626 PSI
27 c.c.	2.500 - 3.000	68÷81 L - 18÷22 gal/min	250 max BAR/3626 PSI
38 c.c.	2.500 - 3.000	95÷115 L - 25÷30,3 gal/min	250 max BAR/3626 PSI

SEMI FORREST PROF

FOREST HYDRAULIC CUTTING HEAD



STRENGTH POINTS



INTERNAL DOUBLE FRAME
+ STATIC KNIVES IN HARDOX



HELICOIDAL ROTOR "HELICOCUT"



ORSI V3.1



DOUBLE-ROW BALL BEARINGS

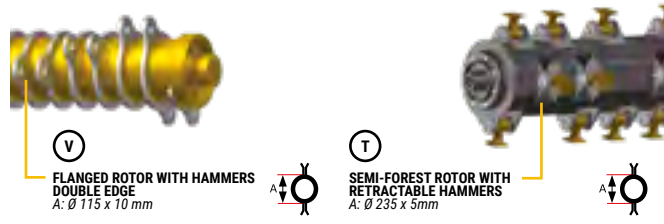
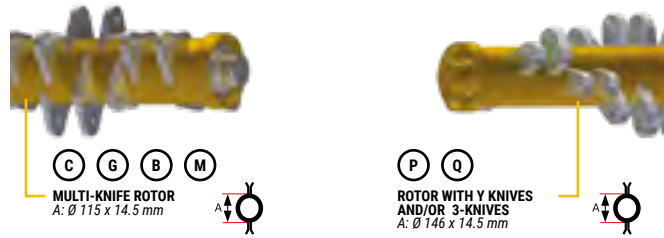
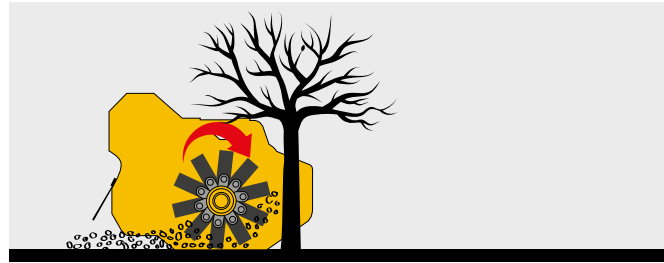
SEMI FORREST **PROF**

PROFESSIONAL SERIES

SEMI FORREST PROF		125	
	C G B M	P Q	T

TECHNICAL SPECIFICATIONS			
Working width	125 cm / 50 in	125 cm / 50 in	125 cm / 50 in
Overall width total	145 cm / 57 in	145 cm / 57 in	145 cm / 57 in
Machine weight*	495=515 kg / 1091=1135 lbs	495=515 kg / 1157=1202 lbs	525=545 kg / 1157=1202 lbs
Belts transmission	3 belts	3 belts	3 belts
tools	C max Ø 3 cm / 1,20 in	48	-
	G max Ø 4 cm / 1,6 in	24	-
	B max Ø 4 cm / 1,6 in	24	-
	M max Ø 6 cm / 2,4 in	24	-
	P max Ø 5 cm / 2 in	-	40
	Q max Ø 5 cm / 2 in	-	40+20
	T max Ø 8/10 cm / 3,2/4 in	-	-

SEMI FORREST PROF	125
MACHINE	
Steel frame with internal Hardox frame (double frame)	✓
Static knife in Hardox and blade cutting system	✓
Replaceable skids with adjustable and replaceable pads	✓
Front and rear protection chains	✓
Mechanical rotation 180°	•
Hydraulic rotation 180° (n°2 hydraulic hoses)	•
Standard mounting brackets (no pins)	•
Adapters	•
TRANSMISSION	
VARISEAL engine with external drainage	✓
Belt transmission	✓
"Helicocut" rotor	✓
Double-row ball bearings	✓
Unidirectional rotor rotation	✓
HYDRAULIC SYSTEM	
One way valve on return	✓
ORSI V3 1-3/4 which includes valve of max. pressure + anticavitation valve + flow regulator. 3 connecting hoses to the machine. Max backpressure on oil drainage = 12 BAR	✓



*variable weight based on the layout



5 ÷ 12 t
11023 ÷ 26456 lbs






max Ø
8/10 cm
3,2/4 in



New SEMI FORREST PROF line, a mulcher for excavators, also available with "Flanges Tool Limiter" technology, with special steel profiles that limit the tools' depth of action, reducing the power demand and ensuring working speed and exceptional performance. A machine designed for cleaning bushes, shrubs and wood up to 8 cm in size, with a wide range of tools.

This machine comes with a pulley transmission, for higher performances.

Available with motors of 22 cc, 27 cc or 38 cc, ideal for excavators from 5 to 12 t.

	RPM		
22 c.c.	2.500 - 3.000	55÷65 L - 15÷18 gal/min	250 max BAR/3626 PSI
27 c.c.	2.500 - 3.000	68÷81 L - 18÷22 gal/min	250 max BAR/3626 PSI
38 c.c.	2.500 - 3.000	95÷115 L - 25÷30,3 gal/min	250 max BAR/3626 PSI

SEMI FORREST PROF FTL

FOREST HYDRAULIC CUTTING HEAD



STRENGTH POINTS



INTERNAL DOUBLE FRAME
+ STATIC KNIVES IN HARDOX



ROTOR WITH "FLANGES TOOL LIMITER"
(FTL) TECHNOLOGY



ORSI V3.1





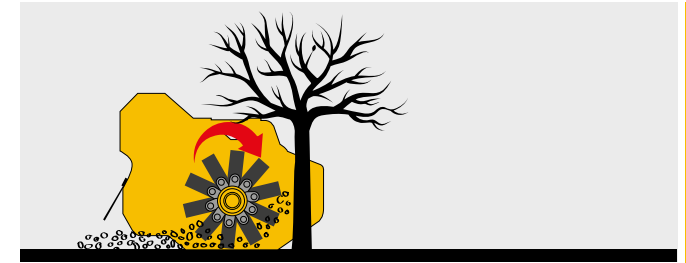
DOUBLE-ROW BALL BEARINGS

SEMI FORREST **PROF FTL**

PROFESSIONAL SERIES

SEMI FORREST PROF FTL	NEW 125 FTL
	

TECHNICAL SPECIFICATIONS		
Working width	125 cm / 50 in	
Overall width total	145 cm / 57 in	
Machine weight*	530÷550 kg / 1168÷1213 lbs	
Belts transmission	3 belts	
tools	 T17 standard max Ø 8/10 cm 3,2/4 in	22 + 2
	 T21 with tungsten carbide optional	22 + 2



NEW
ROTOR FTL
 A: Ø 273 x 8 mm

*variable weight based on the layout

SEMI FORREST PROF	NEW 125 FTL
MACHINE	
Steel frame with internal Hardox frame (double frame)	✓
Static knife in Hardox and blade cutting system	✓
Replaceable skids with adjustable and replaceable pads	✓
Front and rear protection chains	✓
Supplement for rotor with hammers T21 with tungsten carbide	•
Mechanical rotation 180°	•
Hydraulic rotation 180° (n°2 hydraulic hoses)	•
Standard mounting brackets (no pins)	•
Adapters	•
TRANSMISSION	
VARISEAL engine with external drainage	✓
Belt transmission	✓
Rotor with "flanges tool limiter" (FTL) technology	✓
Double-row ball bearings	✓
Unidirectional rotor rotation	✓
HYDRAULIC SYSTEM	
One way valve on return	✓
ORSI V3.1-3/4 which includes valve of max. pressure + anticavitation valve + flow regulator. 3 connecting hoses to the machine. Max backpressure on oil drainage = 12 BAR	✓



8 ÷ 14 ton.
17637 ÷ 30865 lbs






max Ø
10/12 cm
4/4,8 in



FORREST PROF a mulcher for excavators
A machine designed for cleaning bushes, shrubs and wood up to 12 cm in size, with a wide range of tools.

Equipped with an axial piston motor, for high working performance.

Available with a 35 cc or 44 cc motor, ideal for excavators from 8 to 14 t.

	RPM		
PISTON			
35 c.c.	2.500 - 3.000	85÷100 L-22,5=26,5 gal/min	350 max BAR/5076 PSI
44 c.c.	2.500 - 3.000	110÷120 L-29,1=31,7 gal/min	350 max BAR/5076 PSI

FORREST PROF

FOREST HYDRAULIC CUTTING HEAD



STRENGTH POINTS



INTERNAL DOUBLE FRAME
+ STATIC KNIVES IN HARDOX



SEMIFORESTAL ROTOR WITH
ROTATING HAMMERS



ORSI V3.1



DOUBLE-ROW BALL BEARINGS

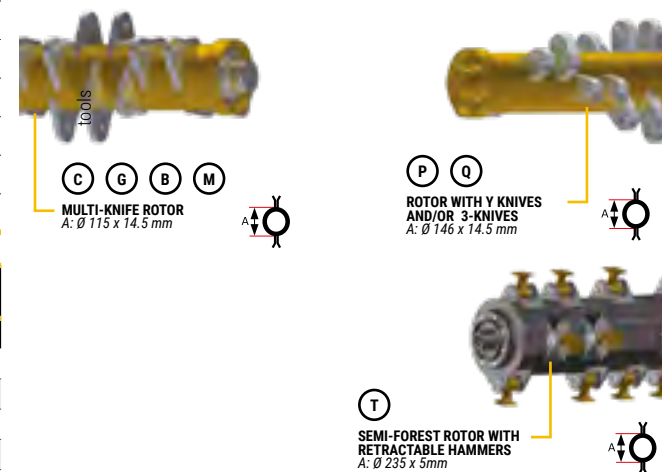
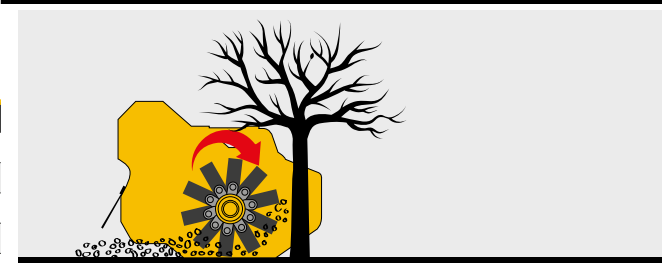
FORREST PROF

PROFESSIONAL SERIES

FORREST PROF	125		
	C G B M	P Q	T

TECHNICAL SPECIFICATIONS			
Working width	125 cm / 50 in	125 cm / 50 in	125 cm / 50 in
Overall width total	145 cm / 57 in	145 cm / 57 in	145 cm / 57 in
Machine weight*	515÷535 kg / 1135÷1179 lbs	515÷535 kg / 1135÷1179 lbs	545÷565 kg / 1202÷1246 lbs
Belts transmission	1 toothed belt	1 toothed belt	1 toothed belt
tools	C max Ø 3 cm / 1,2 in	48	-
	G max Ø 4 cm / 1,6 in	24	-
	B max Ø 4 cm / 1,6 in	24	-
	M max Ø 6 cm / 2,3 in	24	-
	P max Ø 5 cm / 2 in	-	40
	Q max Ø 5 cm / 2 in	-	40+20
	T max Ø 10/12 cm / 4/4,7 in	-	-

FORREST PROF	125
MACHINE	
Steel frame with internal Hardox frame (double frame)	✓
Static knife in Hardox and blade cutting system	✓
Replaceable skids with adjustable and replaceable pads	✓
Front and rear protection chains	✓
Mechanical rotation 180°	•
Hydraulic rotation 180° (n°2 hydraulic hoses)	•
Standard mounting brackets (no pins)	•
Adapters	•
TRANSMISSION	
Unidirectional engine at axial pistons with external drainage	✓
Semiforestral rotor with rotating hammers with tool "T"	✓
Double-row ball bearings	✓
Unidirectional rotor rotation	✓
Transmission with toothed belt	✓
HYDRAULIC SYSTEM	
One way valve on return	✓
ORSI V3.1-3/4 which includes valve of max. pressure + anticavitation valve + flow regulator. 3 connecting hoses to the machine. Max backpressure on oil drainage = 2 BAR	✓





8 ÷ 14 ton.
17637 ÷ 30865 lbs






max Ø
10/12 cm
4/4,8 in



FORREST PROF, a mulcher for excavators, also available with "Flanges Tool Limiter" technology, with special steel profiles that limit the tools' depth of action, reducing the power demand and ensuring working speed and exceptional performance. A machine designed for cleaning bushes, shrubs and wood up to 12 cm in size, with a wide range of tools.

Equipped with an axial piston motor, for high working performance.

Available with a 35 cc or 44 cc motor, ideal for excavators from 8 to 14 t.

	RPM		
PISTON			
35 c.c.	2.500 - 3.000	85÷100 L-22,5=26,5 gal/min	350 max BAR/5076 PSI
44 c.c.	2.500 - 3.000	110÷120 L-29,1=31,7 gal/min	350 max BAR/5076 PSI

FORREST PROF FTL

FOREST HYDRAULIC CUTTING HEAD



STRENGTH POINTS



INTERNAL DOUBLE FRAME
+ STATIC KNIVES IN HARDOX



ROTOR WITH "FLANGES
TOOL LIMITER" (FTL) TECHNOLOGY



ORSI V3.1

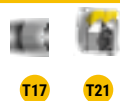


DOUBLE-ROW BALL BEARINGS



FORREST *PROF FTL*

PROFESSIONAL SERIES

FORREST *PROF FTL* NEW 125 FTL



TECHNICAL SPECIFICATIONS

Working width			125 cm / 50 in
Overall width total			145 cm / 57 in
Machine weight*			550÷570 kg / 1213÷1257 in
Belts transmission			1 toothed belt
tools		T17 standard max Ø 10/12 cm 4/4,7 in	22 + 2
		T21 with tungsten carbide optional	22 + 2

FORREST *PROF FTL* NEW 125 FTL

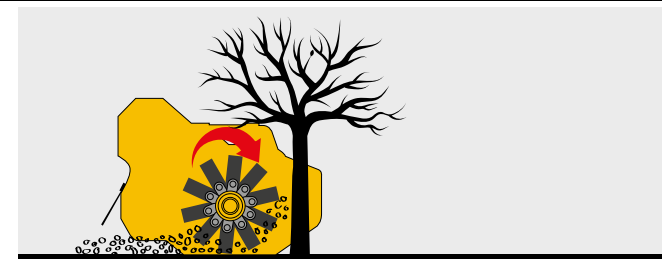
MACHINE	
Steel frame with internal Hardox frame (double frame)	✓
Static knife in Hardox and blade cutting system	✓
Replaceable skids with adjustable and replaceable pads	✓
Front and rear protection chains	✓
Supplement for rotor with hammers T21 with tungsten carbide	•
Mechanical rotation 180°	•
Hydraulic rotation 180° (n°2 hydraulic hoses)	•
Standard mounting brackets (no pins)	•
Adapters	•

TRANSMISSION

Unidirectional engine at axial pistons with external drainage	✓
Rotor with "flanges tool limiter" (FTL) technology	✓
Double-row ball bearings	✓
Unidirectional rotor rotation	✓
Transmission with toothed belt	✓

HYDRAULIC SYSTEM

One way valve on return	✓
ORSI V3.1-3/4 which includes valve of max. pressure + anticavitation valve + flow regulator. 3 connecting hoses to the machine. Max backpressure on oil drainage = 2 BAR	✓



NEW
ROTOR FTL
A: Ø 273 x 8 mm





10 ÷ 18 ton.
22046 ÷ 39683 lbs



max Ø
20 cm
8 in



HARDOX
IN MY BODY

EMR Piston, designed for excavators from 10 to 18 tons, able to shred logs up to 20 cm in diameter, available in two working widths: 110 and 140 cm. It mounts a rotor with retractable hammers, and an axial piston motor, making it a professional and high-performance machine.

	RPM		
PISTON CIL. FISSA			
45 c.c.	1.800 - 2.200	80÷100 L - 21,2÷26,5 gal/min	350 max BAR/5076 PSI
56 c.c.	1.800 - 2.200	100÷125 L - 26,5÷ 33,1 gal/min	350 max BAR/5076 PSI
63 c.c.	1.800 - 2.200	110÷140 L - 29,1÷37 gal/min	350 max BAR/5076 PSI
PISTON CIL. VARIABLE (optional)			
56/80 c.c.	1.800 - 2.200	110÷130 L - 29,1÷34,4 gal/min	350 max BAR/5076 PSI

EMR PISTON

FOREST HYDRAULIC CUTTING HEAD



STRENGTH POINTS



FRAME COMPLETELY
IN HARDOX STEEL



REXROTH AXIAL PISTONS
ENGINE INCLINED AXIS



FORESTRY OCTAGONAL ROTOR WITH
RETRACTABLE ROTATING HAMMERS



ORSI V3.1 INTEGRATED



DOUBLE-ROW SELF-ALIGNING
ROLLER BEARINGS

EMR PISTON

PROFESSIONAL SERIES

EMR PISTON	110	145
TECHNICAL SPECIFICATIONS		
Working width	110 cm / 43 in	140 cm / 55 in
Overall width total	136 cm / 54 in	166 cm / 65 in
Machine weight*	650=750 kg / 1433=1653 lbs	730=830 kg / 1609=1830 lbs
Belts transmission	5 belts	6 belts
tools	16	24

EMR PISTON	110	145
MACHINE		
Frame in Hardox	✓	✓
Counter knife and blade cutting system	✓	✓
Replaceable skids with adjustable and replaceable pads	✓	✓
Protection chains	✓	✓
Standard mounting brackets (no pins)	•	•
Adapters	•	•
TRANSMISSION		
Fixed displacement piston engine REXROTH with external	✓	✓
Octagonal rotor Ø 450 mm (17,7 in) with retractable rotating hammers	✓	✓
Double-row self-aligning roller bearings	✓	✓
Belts transmission	✓	✓
Unidirectional rotor rotation	✓	✓
Rexroth axial piston motor with variable displacement cc 56/80	•	•
HYDRAULIC SYSTEM		
One way valve on return	✓	✓
ORSI V3.1-3/4 (V3.1 - 1" with engine 80cc) which includes valve of max. pressure + anticavitation valve + flow regulator. 3 connecting hoses to the machine. Max backpressure on oil drainage = 2 BAR	✓	✓








10 ÷ 18 ton.
22046 ÷ 39683 lbs



max Ø
25 cm
10in



EMF Piston, designed for excavators from 10 to 18 tons, able to shred logs up to 25 cm in diameter, available in two working widths: 110 and 140 cm. It mounts a rotor with fixed hammers with tungsten inserts, and an axial piston motor, making it a professional and high-performance machine.

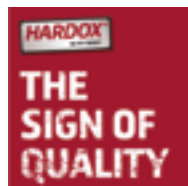
	RPM		
PISTON CIL. FISSA			
45 c.c.	1.600 - 1.900	70÷85 L/ 18÷22 gal min	350 max BAR/5076 PSI
56 c.c.	1.600 - 1.900	90÷105 L/24÷28 gal min	350 max BAR/5076 PSI
63 c.c.	1.600 - 1.900	100÷115 L/26,5÷ 30 gal min	350 max BAR/5076 PSI
PISTON CIL. VARIABILE (optional)			
56/80 c.c.	1.600 - 1.900	95÷110 L/ 25÷29,1 gal min	350 max BAR/5076 PSI

EMF PISTON

FOREST HYDRAULIC CUTTING HEAD



STRENGTH POINTS



FRAME COMPLETELY
IN HARDOX STEEL



REXROTH AXIAL PISTONS
ENGINE INCLINED AXIS



HELICOIDAL ROTOR "HELICOCUT" Ø 450 mm



ORSI V3.1 INTEGRATED

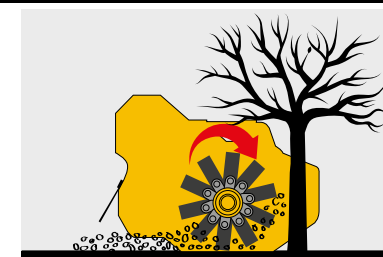


DOUBLE-ROW SELF-ALIGNING
ROLLER BEARINGS

EMF PISTON

PROFESSIONAL SERIES

EMF PISTON	110	145
TECHNICAL SPECIFICATIONS		
Working width	110 cm / 43 in	140 cm / 55 in
Overall width total	136 cm / 54 in	166 cm / 65 in
Machine weight*	650=750 kg / 1433=1653 lbs	730=830 kg / 1609=1830 lbs
Belts transmission	5 belts	6 belts
tools	28	32



TUNGSTEN CARBIDE
FIXED TOOLS



FOREST ROTOR WITH
FIXED TEETH
A: Ø 219 x 20 mm

EMF PISTON	110	145
MACHINE		
Frame in Hardox	✓	✓
Counter knife and blade cutting system	✓	✓
Replaceable skids with adjustable and replaceable pads	✓	✓
Protection chains	✓	✓
Standard mounting brackets (no pins)	•	•
Adapters	•	•
TRANSMISSION		
Fixed displacement piston engine REXROTH with external	✓	✓
Ø 450 mm helical rotor with fixed tungsten tools	✓	✓
Double-row self-aligning roller bearings	✓	✓
Belts transmission	✓	✓
Unidirectional rotor rotation	✓	✓
Supplement for rotor with hammers side scraper with Tungsten carbide	•	•
Rexroth axial piston motor with variable displacement cc 56/80	•	•
HYDRAULIC SYSTEM		
One way valve on return	✓	✓
ORSI V3.1-34 which includes valve of max. pressure + anticavitation valve + flow regulator. 3 connecting hoses to the machine. Max backpressure on oil drainage = 2 BAR	✓	✓



T11
standard
Tungsten carbide



T11
side scraper
Tungsten carbide



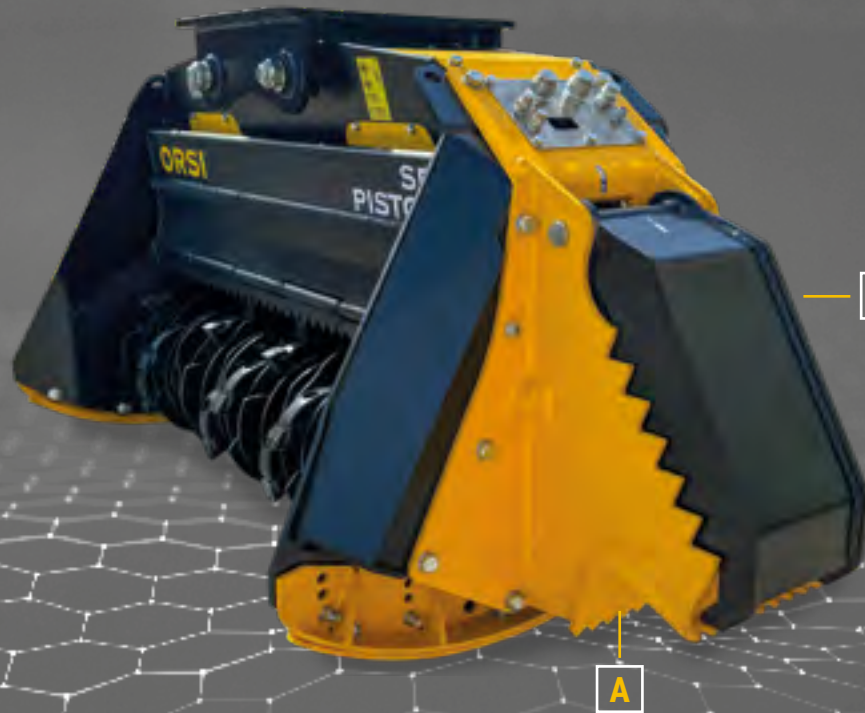
EMR PISTON



18 ÷ 30 ton.
39683÷66139 lbs



max Ø
30 cm
12in



	RPM		
PISTON CIL. FISSA			
56 c.c.	1.600 - 2.000	90÷110 L/24÷29 gal min	350 max BAR/5076 PSI
63 c.c.	1.600 - 2.000	110÷130 L/29÷34 gal min	350 max BAR/5076 PSI
80 c.c.	1.600 - 2.000	140÷160 L/37÷42 gal min	350 max BAR/5076 PSI
107 c.c.	1.600 - 2.000	190÷210 L/50÷55 gal min	350 max BAR/5076 PSI
PISTON CIL. VARIABILE (optional)			
56/80 c.c.	1.600 - 2.000	90÷115 L/24÷30 gal min	350 max BAR/5076 PSI

HARD FTL PISTON

FOREST HYDRAULIC CUTTING HEAD



STRENGTH POINTS



FULLY ENCLOSED DUSTPROOF FRAME
MADE TOTALLY OF STRENX



HARDOX WEAR-RESISTANT INNER
FRAME



REXROTH AXIAL PISTONS



ROTOR WITH "FLANGES TOOL
LIMITER" (FTL) TECHNOLOGY





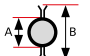
ORSI V3.1 INTEGRATED



DOUBLE-ROW SELF-ALIGNING
ROLLER BEARINGS

HARD *FTL PISTON*

PROFESSIONAL SERIES

SP <i>FTL PISTON</i>		140	170
TECHNICAL SPECIFICATIONS			
Working width		140 cm / 55,2 in	170 cm / 67 in
Overall width total		182 cm / 71,7 in	212 cm / 83,5 in
Machine weight*		1500÷1670 kg / 3307÷3682 lbs	1660÷1760 kg / 3660÷3880 lbs
Belts transmission <i>Quad Power</i>		6 belts	6 belts
tools	 T11	28	32
	 T22	28	32
	A	219x20 mm / 8,7x0,8 in	219x25 mm / 8,7x1 in
	B	455 mm / 18 in	455 mm / 18 in



SP <i>FTL PISTON</i>	140	170
MACHINE		
Fully enclosed dustproof frame made of STREX 700	✓	✓
Hardox wear-resistant inner frame	✓	✓
Variable mulching chamber by means of counter-knives located on the front and rear hydraulically adjustable hoods	✓	✓
Motor integrated into the frame	✓	✓
3 rows of counter knives	✓	✓
Hydraulic front hood	✓	✓
Hydraulic rear hood	✓	✓
Fittings on the machine for hydraulic connections	✓	✓
Unidirectional rotor rotation	✓	✓
Hydraulic tailgate	✓	✓
Standard mounting brackets (no pins)	•	•
Adapters	•	•
A. Thumb bracket	•	•
B. Hydraulic thumb (only thumb bracket)	•	•
TRANSMISSION		
Fixed displacement piston engine REXROTH with external	✓	✓
Rotor with "flanges tool limiter" (FTL) technology	✓	✓
Transmission with pulleys and <i>Quad-Power</i> ® V-Belts	✓	✓
Double row oscillating roller bearings	✓	✓
Supplement for rotor with hammers T22	•	•
Supplement for rotor with hammers side scraper with Tungsten carbide	•	•
Rexroth axial piston motor with variable displacement cc 56/80	•	•
HYDRAULIC SYSTEM		
Selecting valve for hood cylinder control	✓	✓
ORSI V3.1-3/4 (V3.1 - 1" with engine over 63 ci) which includes valve of max. pressure + anticavitation valve + flow regulator. 3 connecting hoses to the machine. Max backpressure on oil drainage = 2 BAR	✓	✓



✓ STANDARD EQUIPMENT | • OPTIONAL EQUIPMENT | - NOT AVAILABLE



1,5 ÷ 13 ton.
3307 ÷ 28660 lbs



10 ton.
22046 lbs

FC, a compact stump cutter, for the shredding of single stumps in woods, parks, on the sides of roads or rivers. Its small size makes it particularly handy and suitable for excavators from 1.5 to 13 t. The piston motor makes it a very professional machine with high performance. Available with different sizes of the cutting disc, from 400 to 540 mm.

FC - GRIND STUMPS

PROFESSIONAL SERIES



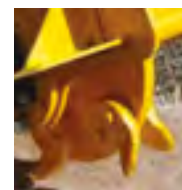
STRENGTH POINTS






SPHERICAL ROLLER BEARINGS
ON DOUBLE ROLLERS ROW



AXIAL PISTONS ENGINE
INCLINED AXIS




INTERCHANGEABLE
TUNGSTEN TEETH

		RPM		
FC 20	12 c.c	1.700 - 2.900	20÷35 L/ 5,3÷9,3 min	350 max BAR/ 5076 PSI
FC 40	18 c.c	1.700 - 2.800	30÷50 L/ 8÷13,2 min	350 max BAR/ 5076 PSI
FC 90	32 c.c	1.600 - 2.200	50÷70 L/ 13,2÷18,5 min	350 max BAR/ 5076 PSI
FC 130	41 c.c	1.600 - 2.200	65÷90 L/ 17÷23,7 min	350 max BAR/ 5076 PSI

FC - GRIND STUMPS

PROFESSIONAL SERIES

FC - GRIND STUMPS	20	40	90	130
TECHNICAL SPECIFICATIONS				
Machine weight*	80÷120 kg / 176÷265 lbs	80÷130 kg / 176÷287 lbs	210÷300 kg / 463÷661 lbs	210÷350 kg / 463÷772 lbs
 Diameter of the cutting disc Ø mm	400 mm / 16 in	400 mm / 16 in	540 mm / 21 in	540 mm / 21 in
N° tools	12	12	16	16

FC - GRIND STUMPS	20	40	90	130
MACHINE				
Steel frame, compact but strong	✓	✓	✓	✓
Front and side chain protection	✓	✓	✓	✓
Cutting disc with interchangeable teeth with tungsten insert	✓	✓	✓	✓
Side bearings	✓	✓	✓	✓
Upper plate for mounting brackets	✓	✓	✓	✓
Standard mounting brackets (no pins)	•	•	•	•
Adapters	•	•	•	•
TRANSMISSION				
Hydraulic piston motor for high performance	✓	✓	✓	✓
HYDRAULIC SYSTEM				
By-pass valve on hydraulic motor	✓	✓	✓	✓
3 connection hoses (delivery, return and drainage) MAX back pressure on oil drainage = 2 BAR	✓	✓	✓	✓

GRIND STUMPS







DISC HEDGE CUTTER *HD*

PROFESSIONAL SERIES



Discs bar with unidirectional gear engine with external drainage (3 hoses: ingoing, outgoing and drainage with max backpressure 2 bar)

MODEL		
HD 1602	40 ÷ 45 lt 10,6 ÷ 11,9 gal/min	200/2900 max BAR/PSI
HD 2002 HD 2402	85 ÷ 90 lt 22,5 ÷ 23,8 gal/min	150/ 2176 max BAR/PSI

DISC HEDGE CUTTER HD	1602	2002	2402
----------------------	------	------	------

TECHNICAL SPECIFICATIONS			
Width	160 cm / 63 in	200 cm / 79 in	238 cm / 94 in
Ø Cutting diameter	10 cm / 4 in	16 cm / 6 in	20 cm / 8 in
Weight	110 kg / 243 lbs	198 kg / 527 lbs	239 kg / 527 lbs
Min power request	kW 13 - 18 HP	kW 17 - 23 HP	kW 17 - 23 HP
Working temperature	-15° C ÷ +80° C	-15° C ÷ +80° C	-15° C ÷ +80° C
Adviced working speed	0/ 1000 m/h	0/ 1500 m/h	0/ 1500 m/h

MACHINE			
ORSI V3.1 - 1/2	✓	✓	✓
Standard mounting brackets (no pins)	•	•	•
Adapters	•	•	•

STRENGTH POINTS



ORSI V3.1






BRANCH CUTTER

PROFESSIONAL SERIES

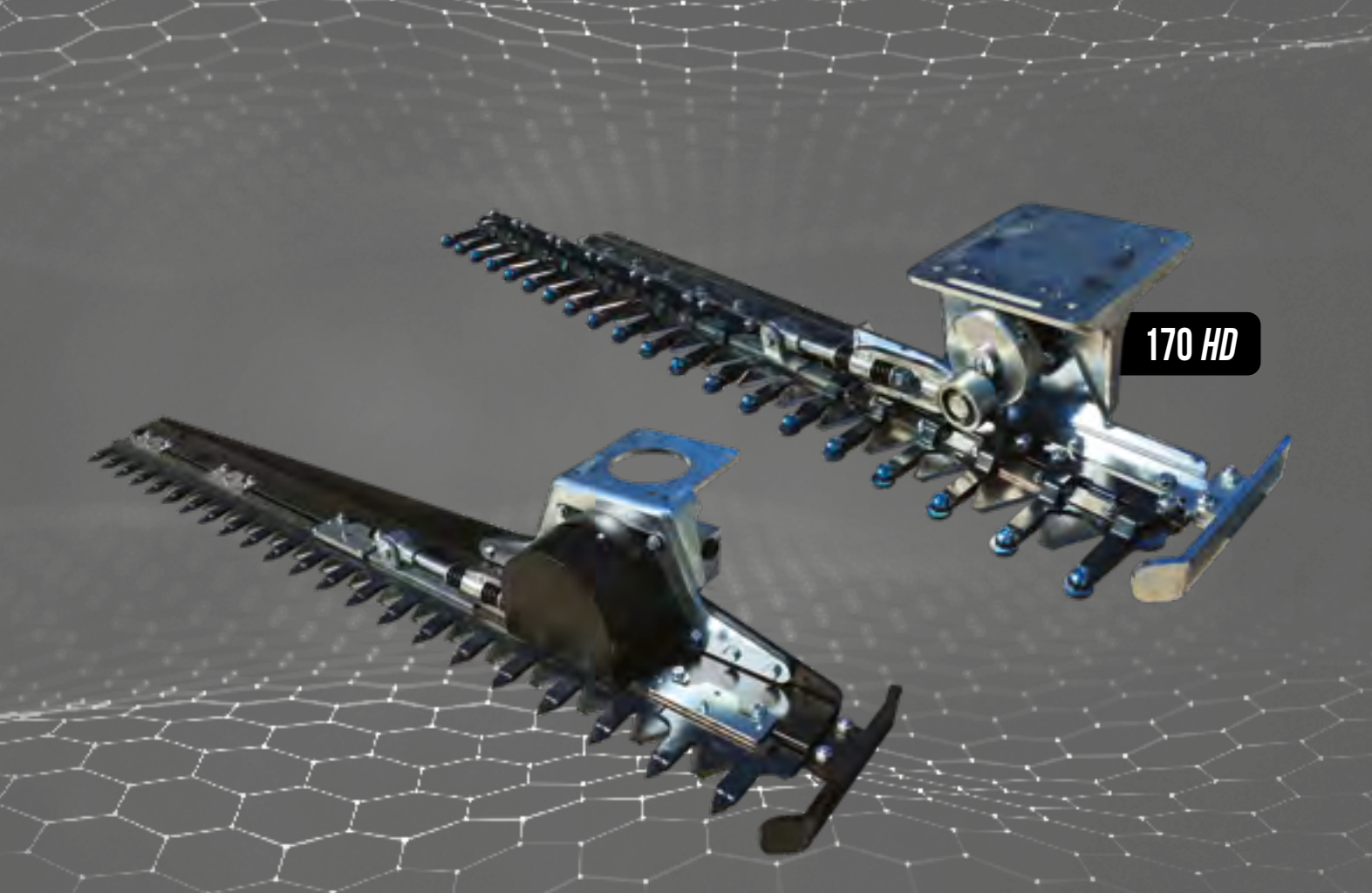


Branches bar with inverter and automatic pressure relief valve, for branches up to 12 cm in diameter.

	
35÷60 L / 9÷16 min	200 max BAR / 2900 PSI

	155 HARDOX	225 HARDOX
TECHNICAL SPECIFICATIONS		
Min power request	kW 19 - 25 HP	kW 19 - 25 HP
Working temperature	-5° C ÷ +70° C	-5° C ÷ +70° C
Advised working speed	0 - 800 m/h	0 - 800 m/h
Min. - Max. Frequency	50 - 65 cycles/min	50 - 65 cycles/min
Width	155 cm / 61 in	225 cm / 89 in
Weight	200 kg / 441 lbs	230 kg / 507 lbs
 Maximum cutting thickness	10 cm / 4 in	10 cm / 4 in
	155 HARDOX	225 HARDOX
Automatic anti-jam inverter	✓	✓
Maximum pressure valve and flow divider	✓	✓
Standard mounting brackets (no pins)	•	•
Adapters	•	•

✓ STANDARD EQUIPMENT | • OPTIONAL EQUIPMENT | - NOT AVAILABLE



Cutter bar designed for profiling of hedges. Ideal to be installed on the arms of the mini excavators, presents a huge versatility of work. Maximum cut, branches of 5 cm.

	
35÷55 L / 9÷15 min	120 max BAR / 1740 PSI


HEDGE BAR

PROFESSIONAL SERIES



HEDGE BAR	125	166	200	170 HD
-----------	-----	-----	-----	--------

TECHNICAL SPECIFICATIONS				
Min power request	kw 14,5 20 HP	kw 14,5 20 HP	kw 14,5 20 HP	kw 14,5 20 HP
Working temperature	-15° C ÷ +80° C	-15° C ÷ +80° C	-15° C ÷ +80° C	-15° C ÷ +80° C
Advised working speed	2000 m/h	2000 m/h	2000 m/h	2000 m/h
Min. - Max. Frequency	200 - 300 cycles/min	200 - 300 cycles/min	200 - 300 cycles/min	200 - 300 cycles/min
Width	125 cm/ 49 in	166 cm/ 65 in	200 cm/ 79 in	170 cm/ 67 in
Weight	46 kg/ 101lbs	58 kg/ 128 lbs	68 kg/ 150 lbs	68 kg/ 150 lbs

 Maximum cutting thickness	125	166	200	170 HD
	3 cm/ 1 in	3 cm/ 1 in	3 cm/ 1 in	5 cm/ 2 in

	125	166	200	170 HD
Unidirectional orbital engine with internal drainage (2 hoses)	✓	✓	✓	✓
Supporto per fissaggio sella di attacco	✓	✓	✓	✓
ORSI V3.1 - integrated	✓	✓	✓	✓
Standard mounting brackets (no pins)	•	•	•	•
Adapters	•	•	•	•

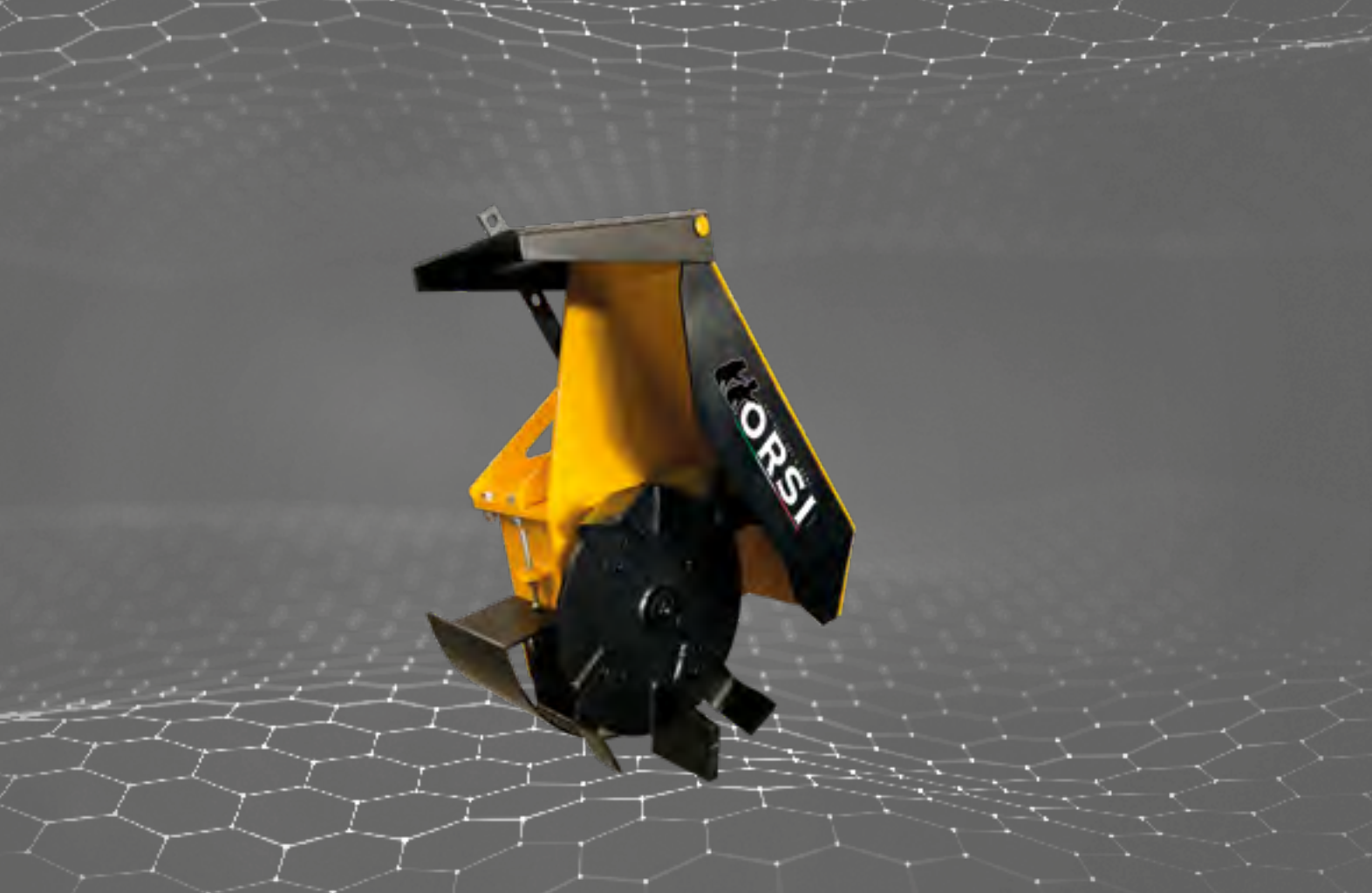
STRENGTH POINTS



ORSI V3.1 INTEGRATED

HEDGE BAR

* MOTOR REF.	CYL. C.C.	FLOW RATE	BAR PRESSURE
00016958	50 c.c.	15 l/ 3 gal min	120 BAR / 1740 PSI
00016959	80 c.c.	17 l/ 4 gal min	120 BAR / 1740 PSI
00016960	100 c.c.	20 l/ 5 gal min	120 BAR / 1740 PSI
00016961	125 c.c.	25 l/ 7 gal min	120 BAR / 1740 PSI
00016962 (200 - 170HD)	160 c.c.	40 l/ 11 gal min	120 BAR / 1740 PSI
00016982 (200 - 170HD)	200 c.c.	55 l/ 15 gal min	120 BAR / 1740 PSI



DITCH CLEANER

PROFESSIONAL SERIES






For ditches cleaning with unidirectional orbital engine with external drainage (3 hoses: ingoing - outgoing and drainage with back pressure max 5 bar)

STRENGTH POINTS



ORSI V3.1 INTEGRATED

MODEL		RPM		
Ø 50 / Ø 65	160 c.c.	450 - 560	75±90 L / 20±24 gal min	250 max BAR / 3626 PSI
Ø 80 / Ø 100	200 c.c.	525 - 600	105±120 L / 28±32 gal min	250 max BAR / 3626 PSI

✓ STANDARD EQUIPMENT | • OPTIONAL EQUIPMENT | - NOT AVAILABLE

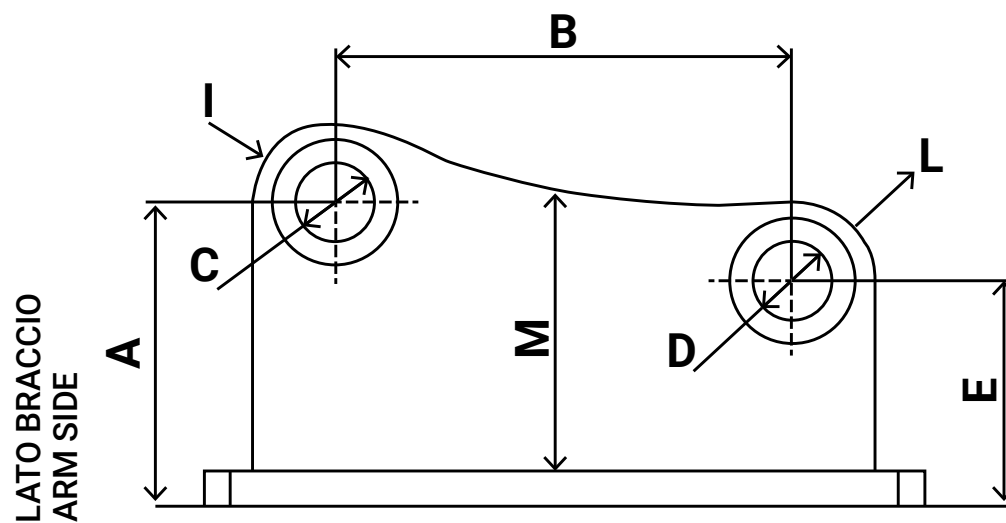
DITCH CLEANER	Ø 50	Ø 65	Ø 80	Ø 100
TECHNICAL SPECIFICATIONS				
Weight	130 kg / 287 lbs	190 kg / 419 lbs	230 kg / 507 lbs	270 kg / 595 lbs
Ø	50 cm / 20 in	65 cm / 26 in	80 cm / 31 in	100 cm / 39 in
	Ø 50	Ø 65	Ø 80	Ø 100
Unidirectional orbital engine with external drainage	✓	✓	✓	✓
ORSI V3.1-3/4 which includes valve of max. pressure + anticavitation valve + flow regulator. 3 connecting hoses to the machine. Max backpressure on oil drainage = 5 BAR	✓	✓	✓	✓
Standard mounting brackets (no pins)	•	•	•	•
Adapters	•	•	•	•



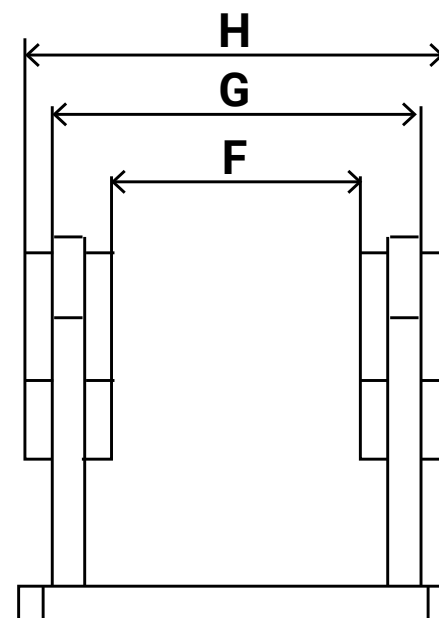
THE BEST HAS A NAME
HORSI

FIXING PLATE

SELLA DI ATTACCO STANDARD STANDARD HITCH SADDLE



LATO BIELLA
ROD SIDE








1,2÷15 ton.
2645÷ 33069 lbs



max Ø
5 cm / 2 in

Hydraulic shredder for miniskids, loaders and telescopic up to 15 ton.
Designed for machines to cut grass, brambles, bushes and reeds.

	RPM		
27 c.c.	2.300 - 2.500	38÷46 L / 10÷12 gal min	250 max BAR / 3626 PSI
38 c.c.	2.300 - 2.500	55÷65 L / 15÷17 gal min	250 max BAR / 3626 PSI
51 c.c.	2.300 - 2.500	75÷87 L / 20÷23 gal min	250 max BAR / 3626 PSI
61 c.c.	2.200 - 2.400	90÷100 L / 24÷26 gal min	250 max BAR / 3626 PSI

TECNIK *HYDRO*

HYDRAULIC SHREDDER



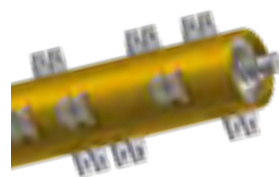
STRENGTH POINTS



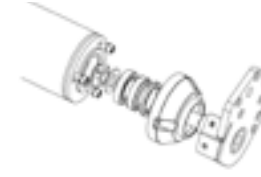
**INTERNAL DOUBLE FRAME
+ STATIC KNIVES IN HARDOX**



AUTOMATIC BELT TENSIONER



ROTORE "VENTILATOR"
electronically balanced Forest tool supports
tools casted in Boron steel





REAR ROLLER PROF Ø 140 mm
with 4 bearings with tapered rollers, mud scraper and
interchangeable central part.

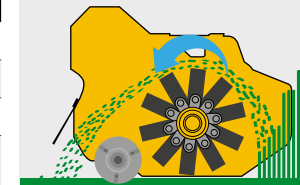


ORSI V3.1



**DOUBLE-ROW SELF-ALIGNING
ROLLER BEARINGS**

TECNIK <i>HYDRO</i>		135	165	180	200	220	255
TECHNICAL SPECIFICATIONS							
Working width		135 cm / 53 in	162 cm / 64 in	181 cm / 71 in	201 cm / 79 in	221 cm / 87 in	253 cm / 100 in
Overall width		155 cm / 61 in	180 cm / 71 in	200 cm / 79 in	220 cm / 87 in	240 cm / 94 in	275 cm / 108 in
Machine weight*		610 kg / 1345 lbs	650 kg / 1433 lbs	690 kg / 1521 lbs	730 kg / 1609 lbs	800 kg / 1764 lbs	910 kg / 2006 lbs
Belts transmission		4 belts <i>quad power</i>	4 belts <i>quad power</i>	4 belts <i>quad power</i>	4 belts <i>quad power</i>	4 belts <i>quad power</i>	4 belts <i>quad power</i>
tools	 Knives A max Ø 3 cm / 1 in	36	36	48	48	60	60
	 Hammers B max Ø 5 cm / 2 in	12	12	16	16	20	20



Position of the self-cleaning rear roller for discharging the mulched product behind the roller for higher output



TECNIK <i>HYDRO</i>		135	165	180	200	220	255
MACHINE							
Steel frame with internal Hardox frame (double frame)		✓	✓	✓	✓	✓	✓
Static knife in Hardox and blade cutting system		✓	✓	✓	✓	✓	✓
Rear roller Ø 140 mm (5,6 in) with 4 tapered roller bearings and interchangeable central body thickness 6 mm, adjustable in height		✓	✓	✓	✓	✓	✓
Front protection flaps		✓	✓	✓	✓	✓	✓
Automatic belt tensioner		✓	✓	✓	✓	✓	✓
Swinging coupler for skid steer loader universal type		✓	✓	✓	✓	✓	✓
Protection chains		•	•	•	•	•	•
Hydraulic side shift with machine already set up		•	•	•	•	•	•
Hydraulic side shift with 6 - way solenoid valve 12 Volt		•	•	•	•	•	•
Replaceable skids		•	•	•	•	•	•
Extra cost for non-universal blade attachment		•	•	•	•	•	•
TRANSMISSION							
VARISEAL engine with external drainage		✓	✓	✓	✓	✓	✓
Belt transmission		✓	✓	✓	✓	✓	✓
Ventilator rotor		✓	✓	✓	✓	✓	✓
Double-row self-aligning roller bearings		✓	✓	✓	✓	✓	✓
Unidirectional rotor rotation		✓	✓	✓	✓	✓	✓
HYDRAULIC SYSTEM							
One way valve on return		✓	✓	✓	✓	✓	✓
ORSI V3.1-3/4 (V3.1 - 1" with engine 61cc 150=170lt/min) which includes valve of max. pressure + anticavitation valve + flow regulator. 3 connecting hoses to the machine. Max backpressure on oil drainage = 2 BAR		✓	✓	✓	✓	✓	✓








1,2÷15 ton.
2645÷ 33069 lbs



max Ø
5 cm / 2 in

Hydraulic shredder for miniskids, loaders and telescopes up to 15 ton.
Designed for machines to cut grass, brambles, bushes and reeds.

	RPM		
35 c.c.	2.300 - 2.500	50÷60 L / 13÷16 gal min	350 max BAR / 5076 PSI
44 c.c.	2.300 - 2.500	65÷75 L / 17÷20 gal min	350 max BAR / 5076 PSI

TECNIK PISTON

HYDRAULIC SHREDDER



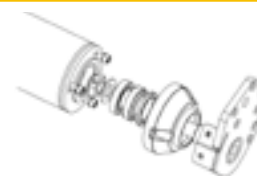
PUNTI DI FORZA



INTERNAL DOUBLE FRAME
+ STATIC KNIVES IN HARDOX



DOUBLE-ROW SELF-ALIGNING
ROLLER BEARINGS





REAR ROLLER PROF Ø 140 mm
with 4 bearings with tapered rollers, mud scraper and interchangeable central part.

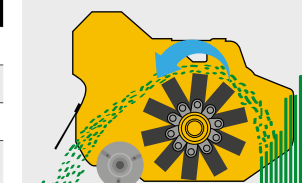


ORSI V3.1



AUTOMATIC BELT TENSIONER

TECNIK PISTON		135	165	180	200	220	255
TECHNICAL SPECIFICATIONS							
Working width		135 cm / 53 in	162 cm / 64 in	181 cm / 71 in	201 cm / 79 in	221 cm / 87 in	253 cm / 100 in
Overall width		155 cm / 61 in	180 cm / 71 in	200 cm / 79 in	220 cm / 87 in	240 cm / 94 in	275 cm / 108 in
Machine weight*		610 kg / 1345 lbs	650 kg / 1433 lbs	690 kg / 1521 lbs	730 kg / 1609 lbs	800 kg / 1764 lbs	910 kg / 2006 lbs
Belts transmission		4 belts quad power	4 belts quad power	4 belts quad power	4 belts quad power	4 belts quad power	4 belts quad power
tools	 Knives A max Ø 3 cm / 1 in	36	36	48	48	60	60
	 Hammers B max Ø 5 cm / 2 in	12	12	16	16	20	20



Position of the self-cleaning rear roller for discharging the mulched product behind the roller for higher output



TECNIK PISTON		135	165	180	200	220	255
MACHINE							
Steel frame with internal Hardox frame (double frame)		✓	✓	✓	✓	✓	✓
Static knife in Hardox and blade cutting system		✓	✓	✓	✓	✓	✓
Rear roller Ø 140 mm with 4 tapered roller bearings and interchangeable central body thickness 6 mm, adjustable in height		✓	✓	✓	✓	✓	✓
Front protection flaps		✓	✓	✓	✓	✓	✓
Automatic belt tensioner		✓	✓	✓	✓	✓	✓
Swinging coupler for skid steer loader universal type		✓	✓	✓	✓	✓	✓
Protection chains		•	•	•	•	•	•
Hydraulic side shift with machine already set up		•	•	•	•	•	•
Hydraulic side shift with 6 - way solenoid valve 12 Volt		•	•	•	•	•	•
Replaceable skids		•	•	•	•	•	•
Extra cost for non-universal blade attachment		•	•	•	•	•	•
TRASMISSIONE							
Unidirectional engine at axial pistons with external drainage		✓	✓	✓	✓	✓	✓
Toothed belt transmission		✓	✓	✓	✓	✓	✓
Ventilator rotor		✓	✓	✓	✓	✓	✓
Double-row self-aligning roller bearings		✓	✓	✓	✓	✓	✓
Unidirectional rotor rotation		✓	✓	✓	✓	✓	✓
HYDRAULIC SYSTEM							
One way valve on return		✓	✓	✓	✓	✓	✓
ORSI V3.1-3/4 which includes valve of max. pressure + anticavitation valve + flow regulator. 3 connecting hoses to the machine. Max backpressure on oil drainage = 2 BAR		✓	✓	✓	✓	✓	✓





T41
standard



BEARS FORREST *PISTON*

FORESTRY SERIES

HARDOX
IN MY BODY

THE BEST HAS A NAME
ORSI

SUPER COMPACT SKID

Mulcher designed for Skid-Steer loaders, with specially reinforced frame to withstand the axial loads caused by the specific movement styles of this group of vehicles hard conditions. Mulchers designed for all shredding operations of bushes, branches, and trees up to a maximum diameter of 18/20 cm depending on the condition of the product to be shredded. Octagonal forest type rotor with retractable forged hammers. A machine equipped with screw adjustable and interchangeable side skids, with two rows of counter-knives that guarantee a fine and homogeneous shredding. The hood is hydraulic adjustable by a protected and integrated cylinder within the double HARDOX® frame, completely closed / dustproof.

Double row of front protection chains, with screwed plates that limit the escape of shredded material, protecting the operator and the tractor/cabin at the same time. Mechanical arch for pushing down branches whilst protecting the tractor, helping convey the material to the rotor for better shredding. Double-edged tools allow them to be reversed when worn and therefore take advantage of the other side extending their life. Very sturdy and compact, BEARS FORREST PISTON stands out for its ergonomic design that guarantees excellent visibility for the operator during the various operations.

It can be used with any brand of Skid Steer Loader on the market thanks to our "SMARTFIT" Universal hitch. Fitted with a REXROTH® AXIAL PISTON hydraulic motor or optionally available with a VARIABLE DISPLACEMENT PISTON HYDRAULIC MOTOR (REXROTH® a Bosch Company®) with automatic variable flow rate, which allows increased productivity and at the same time reduced consumption. Dustproof chassis with reinforced side to withstand the axial load of skid steers, with hydraulic opening and closing of the hood.

Standard with the ORSI developed '3 in 1' hydraulic circuit valve giving this machine the advantage that it can be easily used on all models of different Skid Steer Loader brands.

BEARS FORREST *PISTON*

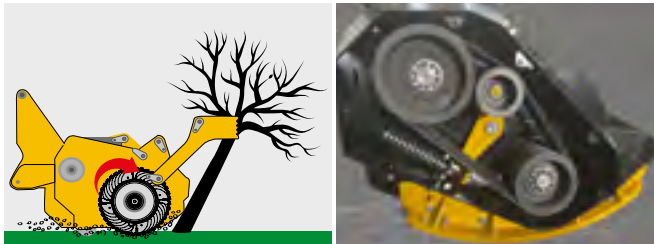
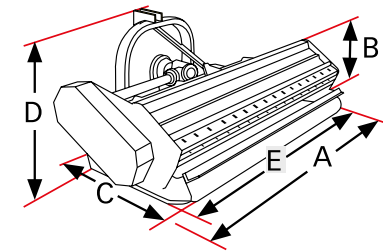


25 ton.
55115 lbs



max Ø
18/20 cm / 7/8 in

**OVERGROWN VEGETATION,
BRANCHES, SHRUBS**



	RPM		
PISTON CIL. FISSA			
45 c.c.	1.800 - 2.200	65÷80 l/17÷21 gal min	350 max BAR/ 5076 PSI
56 c.c.	1.800 - 2.200	80÷100 l/21÷26 gal min	350 max BAR/ 5076 PSI
63 c.c.	1.800 - 2.200	90÷110 l/ 24÷29 gal min	350 max BAR/ 5076 PSI
80 c.c.	1.800 - 2.200	110÷140 l/29÷37 gal min	350 max BAR/ 5076 PSI
PISTON CIL. VARIABLE (optional)			
56/80 c.c.	1.800 - 2.200	85÷110 l/22÷29 gal min	350 max BAR/ 5076 PSI

BEARS FORREST PISTON	A cm/in	B cm/in	C cm/in	D cm/in	E cm/in
170	202/ 80	53/ 21	118/ 46	113/ 44	170/ 67
210	224/ 88	53/ 21	118/ 46	113/ 44	192/ 76
255	252/ 99	53/ 21	118/ 46	113/ 44	223/ 88

STRENGTH POINTS



INTERNAL DOUBLE FRAME
IN HARDOX



REXROTH AXIAL PISTONS
ENGINE INCLINED AXIS



FORESTRY OCTAGONAL
ROTOR Ø 450 mm



ORSI V3.1



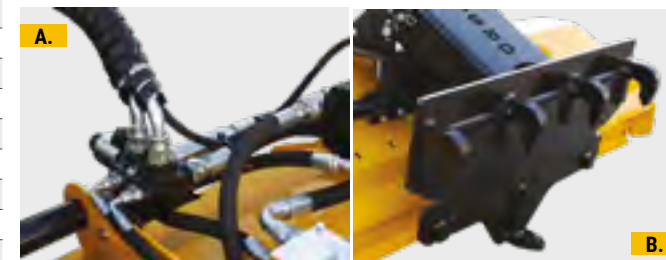
OSCILLATING BEARINGS WITH DOUBLE
COLUMN OF BALLS

BEARS FORREST <i>PISTON</i>		170	210	250
TECHNICAL SPECIFICATIONS				
Working width		170 cm 67 in	192 cm 76 in	223 cm 88 in
Machine weight*		1180 kg 2601 lbs	1370 kg 3020 lbs	1550 kg 3417 lbs
tools T41  hammers <i>standard</i>		28	32	40
		A 350 x 8 mm 13,8 x 0,32 in	350 x 8 mm 13,8 x 0,32 in	350 x 8 mm 13,8 x 0,32 in
	B	450 mm 17,7 in	450 mm 17,7 in	450 mm 17,7 in
N° belts		6	6	6

BEARS FORREST <i>PISTON</i>	170	210	250
MACHINE			
Double frame in Hardox steel	✓	✓	✓
Hardox counter-knives	✓	✓	✓
Hydraulic rear tailgate	✓	✓	✓
Bonnet with a double row of protective chains	✓	✓	✓
Adjustable height skids in Hardox steel	✓	✓	✓
Completely closed and dustproof frame	✓	✓	✓
Double row of protective chains with screwed flaps	✓	✓	✓
Reflectors	✓	✓	✓
Universal skid loader attachment	✓	✓	✓
Mechanically adjustable arch for pushing down branches	✓	✓	✓
A. 6 way solenoid valve 12 Volt for machine not set up for command bonnet opening	✓	✓	✓
B. Extra cost for non-universal blade attachment	•	•	•
TRANSMISSION			
Unidirectional motor with external axial piston drainage	✓	✓	✓
Lateral transmission with 6 belts	✓	✓	✓
Octagonal rotor Ø 450 mm (17,7 in) with retractable forged hammers	✓	✓	✓
Oscillating bearings with double column of balls	✓	✓	✓
Automatic belt tensioner	✓	✓	✓
Rexroth axial piston motor with variable displacement cc 56/80	-	•	•
HYDRAULIC SYSTEM			
One way valve on return	✓	✓	✓
ORSI V3.1-1 which includes valve of max. pressure + anticavitation valve + flow regulator MAX back pressure on oil drainage = 2 BAR	✓	✓	✓

*variable weight based on the layout

BEARS FORREST *PISTON*





T11
standard
Tungsten carbide



T11
side scraper
Tungsten carbide

optional



HULK FORRESTER PISTON

FORESTRY SERIES



HULK FORREST *PISTON*

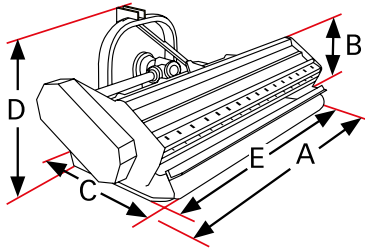


25 ton.
55115 lbs



max Ø
25 cm / 10 in

**OVERGROWN VEGETATION,
BRANCHES, SHRUBS**



	RPM		
PISTON CIL. FISSA			
45 c.c.	1.500 - 1.800	65÷80 l/17÷21 gal min	350 max BAR/ 5076 PSI
56 c.c.	1.500 - 1.800	85÷100 l/22÷26 gal min	350 max BAR/ 5076 PSI
63 c.c.	1.500 - 1.800	90÷110 l/ 24÷29 gal min	350 max BAR/ 5076 PSI
80 c.c.	1.500 - 1.800	115÷140 l/30÷37 gal min	350 max BAR/ 5076 PSI
PISTON CIL. VARIABLE (optional)			
56/80 c.c.	1.500 - 1.800	85÷100 l/22÷26 gal min	350 max BAR/ 5076 PSI

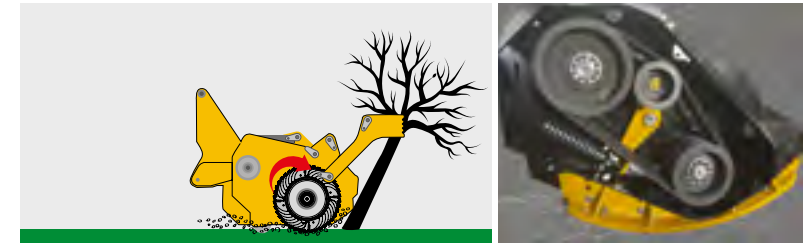
NEW UNIVERSE SKID

Mulcher designed for Skid-Steer loaders, for all shredding operations of bushes, branches and trees up to a maximum diameter of 25 cm, equipped with helical forestry rotor Ø 450 mm with fixed tools. The specially reinforced frame to withstand the axial loads caused by the movement of the skid steers in demanding conditions is equipped with screw adjustable interchangeable support skids and with two rows of HARDOX® counter-knives that guarantee a fine and homogeneous shredding. The hood is hydraulically adjustable with cylinder integrated and protected in the Hardox double frame. Double row of front protection chains, with screwed plates that limit the escape of shredded material whilst protecting the operator and the tractor / cab at the same time.

Mechanical arch for pushing down branches whilst protecting the tractor, helping convey the material to the rotor for better shredding. On request, this can be hydraulically operated for greater ease of use and comfort. Fixed tools in wear resistant tungsten carbide for highly professional and difficult jobs. Double-edged tools allow them to be reversed when worn and therefore take advantage of the other side for longer life. With a sturdy and professional rotor, the HULK FORREST PISTON stands out for its ergonomic design that guarantees excellent visibility for the operator during the various operations. It can be used with any brand of Skid Steer Loader on the market thanks to our "SMARTFIT" Universal hitch. Supplied with a REXROTH® AXIAL PISTON hydraulic motor or optionally available with the VARIABLE DISPLACEMENT PISTON HYDRAULIC MOTOR (REXROTH® a Bosch Company®) with automatic variable flow rate, which allows increased productivity and reduced consumption at the same time. Dustproof chassis and reinforced side to withstand the axial load of the crawlers, hydraulic opening and closing of the hood.

Standard with valve developed by ORSI 3 in 1 which allows to have advantages in the hydraulic circuit to be easily used on all models of different Skid Steer Loader brands.

HULK FORREST <i>PISTON</i>	A cm/in	B cm/in	C cm/in	D cm/in	E cm/in
170	202/ 80	53/ 21	118/ 46	113/ 44	170/ 67
210	224/ 88	53/ 21	118/ 46	113/ 44	192/ 76
250	252/ 99	53/ 21	118/ 46	113/ 44	223/ 88



STRENGTH POINTS



**INTERNAL DOUBLE FRAME
IN HARDOX**



**REXROTH AXIAL PISTONS
ENGINE INCLINED AXIS**




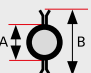
**TUNGSTEN CARBIDE
FIXED TOOLS**



ORSI V3.1

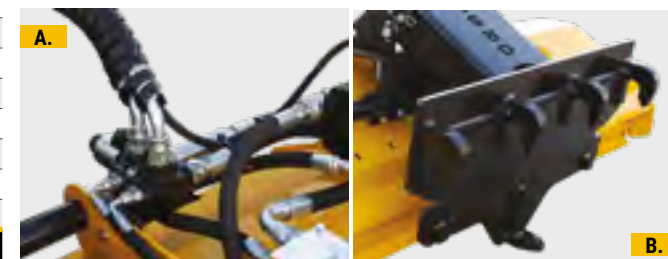


**OSCILLATING BEARINGS WITH DOUBLE
COLUMN OF BALLS**

HULK FORREST <i>PISTON</i>		170	210	250
TECHNICAL SPECIFICATIONS				
Working width		170 cm 67 in	192 cm 75,6 in	220 cm 86,6 in
Machine weight*		1480 kg 3263 lbs	1590 kg 3505 lbs	1680 kg 3703 lbs
tools	 T11 hammers <i>standard</i>	36	40	N° 48
		A 219 x 20 mm 8,6 x 0,8 in	219 x 20 mm 8,6 x 0,8 in	219 x 25 mm 8,6 x 1 in
	B	455 mm 18 in	455 mm 18 in	455 mm 18 in
N° belts Powerband Triplex		2	2	2

HULK FORREST <i>PISTON</i>	170	210	250
MACHINE			
Double frame in Hardox steel	✓	✓	✓
Hardox counter-knives	✓	✓	✓
Hydraulic rear tailgate	✓	✓	✓
Bonnet with a double row of protective chains	✓	✓	✓
Adjustable height skids in Hardox steel	✓	✓	✓
Completely closed and dustproof frame	✓	✓	✓
Double row of protective chains with screwed flaps	✓	✓	✓
Reflectors	✓	✓	✓
Universal skid loader attachment	✓	✓	✓
Mechanically adjustable arch for pushing down branches	✓	✓	✓
A. 6 way solenoid valve 12 Volt for machine not set up for command bonnet opening	✓	✓	✓
B. Extra cost for non-universal blade attachment	•	•	•
TRANSMISSION			
Unidirectional motor with external axial piston drainage	✓	✓	✓
Lateral transmission with 6 belts	✓	✓	✓
Helical forest rotor Ø 450 mm with fix tools in Tungsten carbide	✓	✓	✓
Oscillating bearings with double column of balls	✓	✓	✓
Double rotor support	✓	✓	✓
Automatic belt tensioner	✓	✓	✓
Rexroth axial piston motor with variable displacement cc 56/80	-	•	•
Supplement for rotor with hammers side scraper with Tungsten carbide	•	•	•
HYDRAULIC SYSTEM			
One way valve on return	✓	✓	✓
ORSI V3.1-1 which includes valve of max. pressure + anticavitation valve + flow regulator MAX back pressure on oil drainage = 2 BAR	✓	✓	✓

HULK FORREST *PISTON*



*variable weight based on the layout



T11
standard
Tungsten carbide



T11
side scraper
Tungsten carbide



optional

T22
optional



HULK FTL PISTON



FORESTRY SERIES



NEW UNIVERSE SKID

Mulcher designed for Skid-Steer loaders, for all shredding operations of bushes, branches and trees up to a maximum diameter of 25 cm, equipped with helical forestry rotor Ø 450 mm with fixed tools. The specially reinforced frame to withstand the axial loads caused by the movement of the skid steers in demanding conditions is equipped with screw adjustable interchangeable support skids and with two rows of HARDOX® counter-knives that guarantee a fine and homogeneous shredding. The hood is hydraulically adjustable with cylinder integrated and protected in the Hardox double frame. Double row of front protection chains, with screwed plates that limit the escape of shredded material whilst protecting the operator and the tractor / cab at the same time.

Mechanical arch for pushing down branches whilst protecting the tractor, helping convey the material to the rotor for better shredding. On request, this can be hydraulically operated for greater ease of use and comfort. Fixed tools in wear resistant tungsten carbide for highly professional and difficult jobs. Double-edged tools allow them to be reversed when worn and therefore take advantage of the other side for longer life. With a sturdy and professional rotor, the HULK FORREST PISTON stands out for its ergonomic design that guarantees excellent visibility for the operator during the various operations. It can be used with any brand of Skid Steer Loader on the market thanks to our "SMARTFIT" Universal hitch. Supplied with a REXROTH® AXIAL PISTON hydraulic motor or optionally available with the VARIABLE DISPLACEMENT PISTON HYDRAULIC MOTOR (REXROTH® a Bosch Company®) with automatic variable flow rate, which allows increased productivity and reduced consumption at the same time. Dustproof chassis and reinforced side to withstand the axial load of the crawlers, hydraulic opening and closing of the hood.

Standard with valve developed by ORSI 3 in 1 which allows to have advantages in the hydraulic circuit to be easily used on all models of different Skid Steer Loader brands.

HULK FTL PISTON

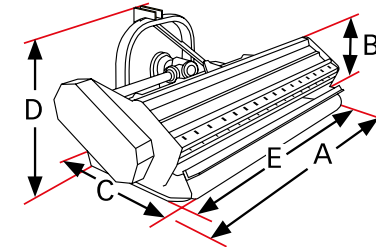


25 ton.
55115 lbs



max Ø
25 cm / 10 in

**OVERGROWN VEGETATION,
BRANCHES, SHRUBS**



HULK FTL PISTON	A cm/in	B cm/in	C cm/in	D cm/in	E cm/in
170	202/ 80	53/ 21	118/ 46	113/ 44	170/ 67
210	224/ 88	53/ 21	118/ 46	113/ 44	192/ 76
250	252/ 99	53/ 21	118/ 46	113/ 44	223/ 88

	RPM		
PISTON CIL. FISSA			
45 c.c.	1.500 - 1.800	65÷80 l/17÷21 gal min	350 max BAR/ 5076 PSI
56 c.c.	1.500 - 1.800	85÷100 l/22÷26 gal min	350 max BAR/ 5076 PSI
63 c.c.	1.500 - 1.800	90÷110 l/ 24÷29 gal min	350 max BAR/ 5076 PSI
80 c.c.	1.500 - 1.800	115÷140 l/30÷37 gal min	350 max BAR/ 5076 PSI
PISTON CIL. VARIABILE (optional)			
56/80 c.c.	1.500 - 1.800	85÷100 l/22÷26 gal min	350 max BAR/ 5076 PSI

STRENGTH POINTS



INTERNAL DOUBLE FRAME
IN HARDOX



REXROTH AXIAL PISTONS
ENGINE INCLINED AXIS




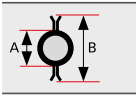
ROTOR WITH "FLANGES TOOL
LIMITER" (FTL) TECHNOLOGY



ORSI V3.1

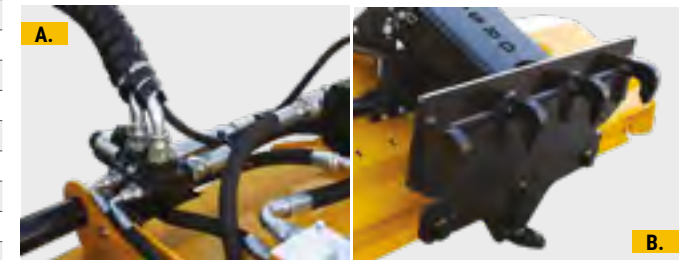


OSCILLATING BEARINGS WITH DOUBLE
COLUMN OF BALLS WWW.ORSIGROUP.IT

HULK FTL <i>PISTON</i>		170	210	250
TECHNICAL SPECIFICATIONS				
Working width		170 cm 67 in	192 cm 75,6 in	220 cm 86,6 in
Machine weight*		1589 kg 3503 lbs	1751 kg 3860 lbs	1837 kg 4050 lbs
tools	 T11 hammers <i>standard</i>	32	36	44
	 T22 hammers <i>optional</i>	32	36	44
		A	219 x 20 mm 8,6 x 0,8 in	219 x 25 mm 8,6 x 1 in
		B	455 mm 18 in	455 mm 18 in
N° belts		2	2	2

HULK FORREST <i>PISTON</i>	170	210	250
MACHINE			
Double frame in Hardox steel	✓	✓	✓
Hardox counter-knives	✓	✓	✓
Hydraulic rear tailgate	✓	✓	✓
Bonnet with a double row of protective chains	✓	✓	✓
Adjustable height skirts in Hardox steel	✓	✓	✓
Completely closed and dustproof frame	✓	✓	✓
Double row of protective chains with screwed flaps	✓	✓	✓
Reflectors	✓	✓	✓
Universal skid loader attachment	✓	✓	✓
Mechanically adjustable arch for pushing down branches	✓	✓	✓
A. 6 way solenoid valve 12 Volt for machine not set up for command bonnet opening	✓	✓	✓
B. Extra cost for non-universal blade attachment	•	•	•
TRANSMISSION			
Unidirectional motor with external axial piston drainage	✓	✓	✓
Lateral transmission with 6 belts	✓	✓	✓
Helical forest rotor Ø 450mm with fix tools in tungsten	✓	✓	✓
Oscillating bearings with double column of balls	✓	✓	✓
Double rotor support	✓	✓	✓
Automatic belt tensioner	✓	✓	✓
Rexroth axial piston motor with variable displacement cc 56/80	-	•	•
Supplement for rotor with hammers T22	•	•	•
Supplement for rotor with hammers side scraper with Tungsten carbide	•	•	•
HYDRAULIC SYSTEM			
One way valve on return	✓	✓	✓
ORSI V3.1-1 which includes valve of max. pressure + anticavitation valve + flow regulator MAX back pressure on oil drainage = 2 BAR	✓	✓	✓

HULK FTL *PISTON*



*variable weight, based on the layout



WILD TO SURVIVE





« The first Orsi Mulcher was purchased by my family about 25 years ago. The main quality we were looking for was reliability and performance of the machines in very difficult field conditions. The ORSI machines we have had are as reliable as possible, and have always done the work in the fields very well and importantly, we are extremely happy with the service. »

Azienda Agricola Boselli
Daniele e Filippo (BOLOGNA) Italia



ORSI GROUP S.R.L.

Via S. Andrea, 2A
Mascarino di Castello d'Argile
40050 / BOLOGNA / ITALY
Ph. +39 051 6867072

info@orsigroup.it
www.orsigroup.it

cod. 00029258
Con il contributo del Fondo europeo di sviluppo regionale
Photos, drawings and technical data are approximate and not binding. Features and specifications are subject to change without notice.