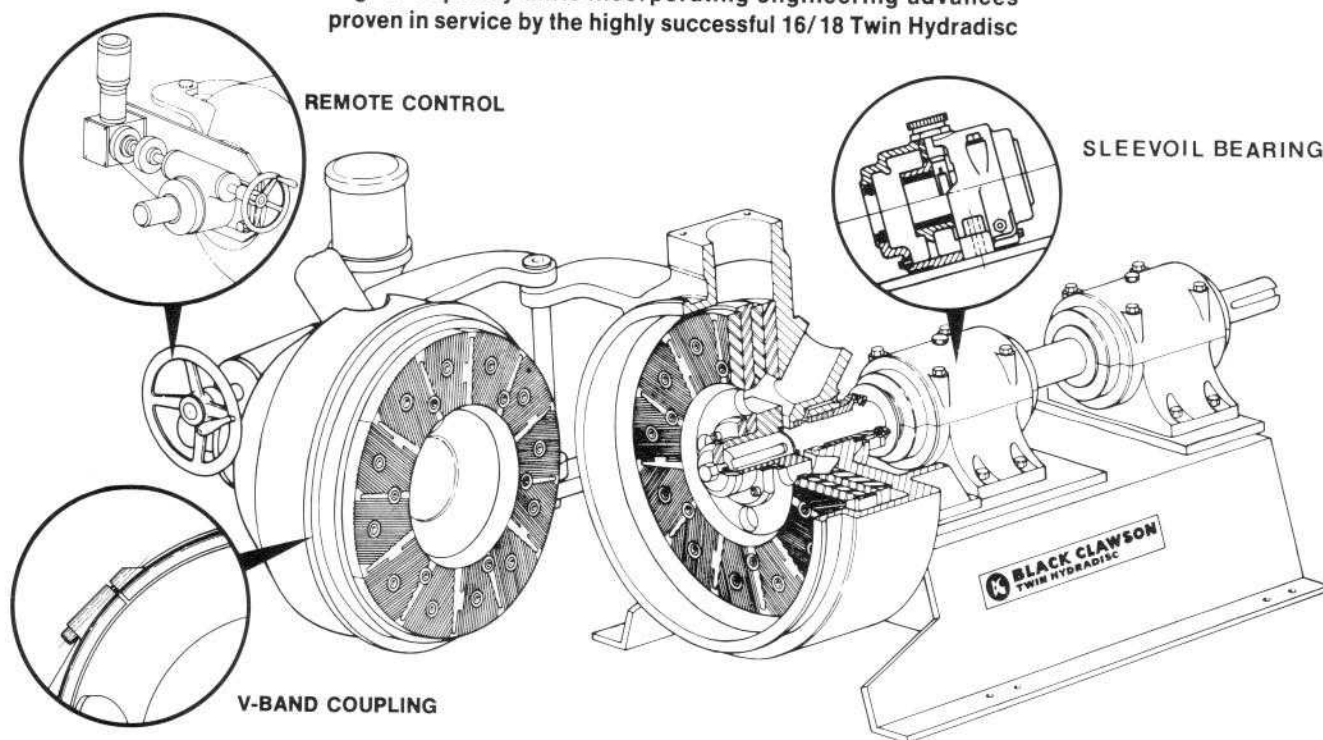


Higher capacity units incorporating engineering advances proven in service by the highly successful 16/18 Twin Hydradisc



PROVEN mechanical features

- **CLEAN & FUNCTIONAL . . . INSIDE & OUT** No obstructions to hang-up stock or cause plugging. Simple packing box . . . no mess from stock or water.
- **IDEAL INLET DESIGN . . .** 45 degree direct angle flow of stock to refining surfaces. Inlet designed for use with flexible hoses.
- **NO HAND . . .** discharge port is at center of casing on top of machine.
- **RAPID DISC CHANGE . . .** complete plate change can be made in approx. 2 hrs. using Rotor Crane.
- **HINGED FRONT CASTING . . .** can be opened for inspection in minutes. Sealed with V-Band coupling.
- **ELECTRO-MECHANICAL REMOTE CONTROL . . .** Standard control is motorized plate adjustment. Handwheel is used for quick back-out for maintenance.
- **BALANCED FLOW ROTOR . . .** holes in rotor provide balance of stock flow whether using one or both inlets.
- **ROTOR MOUNTED ON PERMANENT HUB . . .** easier to disassemble, insures balance and alignment in reassembly.

Application: Wherever refiners are used in the pulp and paper mill.

FLOW CONTROL

Production capacity through the unit is controlled on the discharge side of the refiner, preferably with a V-gate or V-port valve, either manual or motorized.

SAFETY FEATURES

Refiner is equipped with a pressure switch mounted on inlet header to prevent damage to plates in event of pump motor failure and pressure loss.

Motorized plate adjusting unit with control panel automatically backs plates apart in event of refiner motor failure.

INTERCHANGEABLE PLATES

The refiner is designed to accommodate 26", 28" or 30" diameter plates on the same frame.



SHARTLE-PANDIA DIVISION

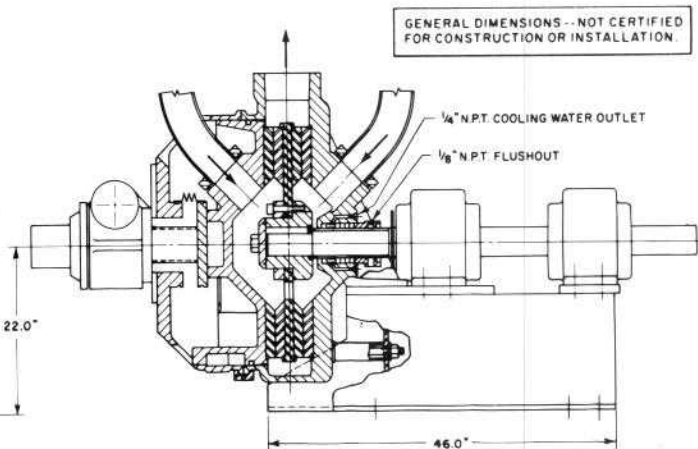
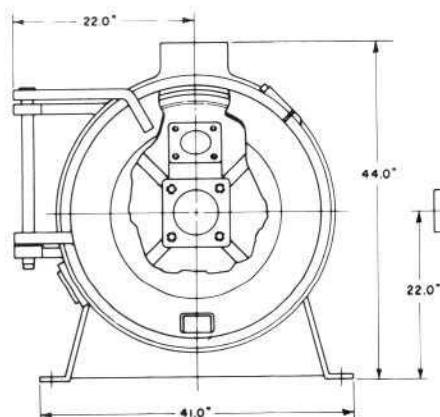
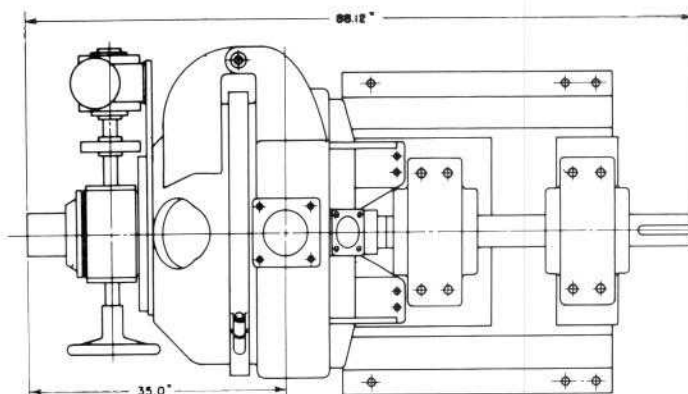
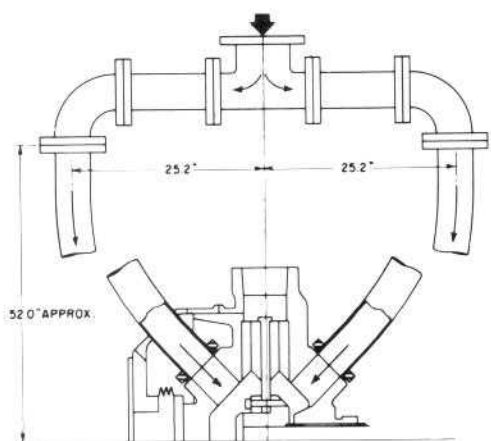
605 Clark St., Middletown, OH 45042

Phone: (513) 424-7400

Telex: 203513

26/30 TWIN HYDRADISC

GENERAL SPECIFICATIONS



GENERAL DIMENSIONS -- NOT CERTIFIED FOR CONSTRUCTION OR INSTALLATION

SIZE DIA. IN.	WT. LBS.	SPEED RANGE RPM	RANGE CONN. HP.	CAPACITY T/D @ 4.0% CONS.
26	4600	400 — 720	150 — 400	30 — 180
28	4800	400 — 720	200 — 500	35 — 240
30	5000	400 — 720	250 — 600	40 — 300

SPECIFICATIONS

Weight: 4,600-5,000 lbs.

Width: 41"

Height: 44"

Length: (door open) 108"

Standard Speed, All Sizes: 720 RPM

Rotor Sizes 26" 28" 30"

Connected HP Standard 350 400 500

Connected HP Maximum 400 500 600

Refining Speed Range 400 to 720 RPM

Connected HP Range 150 to 600 HP

Capacity Range: 30-300 (T/D at 4.0% consistency)

Max. Hydraulic Capacity: 1200 to 1600 GPM

Casing Pressure: 100 PSI

Inlet Pressure: 15 to 75 PSI (30 PSI Standard)

Inlets: 4" Diameter on center line at 45°

Outlet: 6" Diameter (at top center)

Body Metallurgy: 304 SS for all wetted parts except plate segments

Plate Metallurgy: Ni-Hard and Hi-Chrome Alloy

WK² — 26" — 340

WK² — 28" — 400

WK² — 30" — 460

Black Clawson