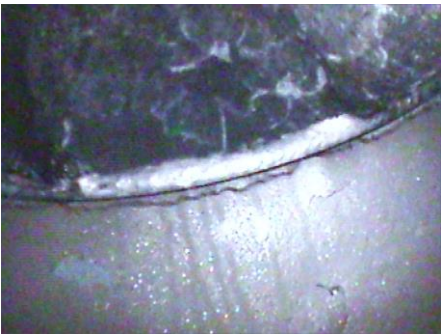


Pump Number	Pump Size	Test/Serial Number	Equipment Number	Service/ Application	Rated	Comments
2	CL-4002	174078560	1828	#1 PM Success Flow	90-95%	Position 1, grease lube, left side drive end discharge, double ext. shaft, driven by a Reliance motor 200 hp, 1190 rpm

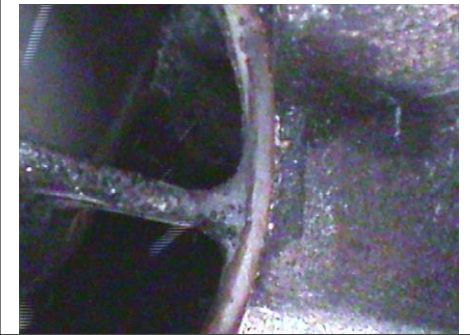
This pump was repaired by the Nash Cleveland Service Center in September of 2017. The body and cones are stainless steel clad. The rotor shrouds have been stainless steel rung. It appears there was contact between the rotor and cone tip on the idle end. The cladding appears to be peeled and the rotor tip is grooved. Besides this, the other clearances and internals looks good. Monitor wear with future visits.



Drive end Rotor shroud clearance is good.



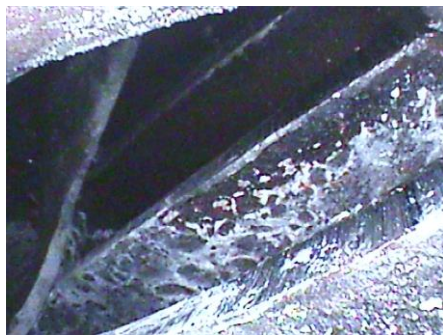
Drive end rotor taper is good.



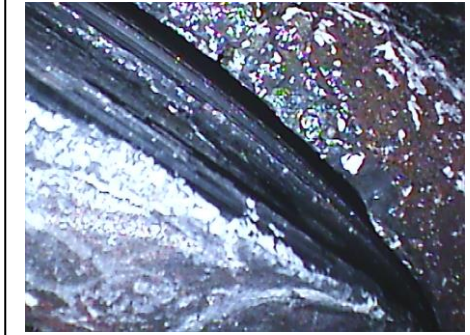
Drive end rotor taper clearance is good.



Idle end Rotor shroud clearance is good.



Idle end rotor taper is good.

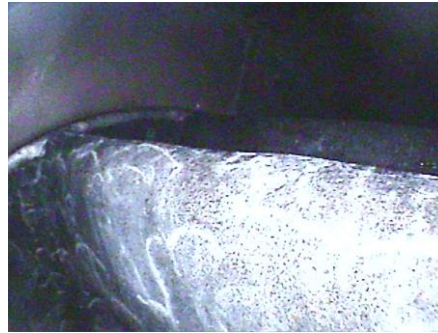


Idle end rotor taper is grooved at the tip.

Pump Number	Pump Size	Test/Serial Number	Equipment Number	Service/ Application		Rated		Comments
2 continued								



Outer Drive end Rotor Blades in good condition.



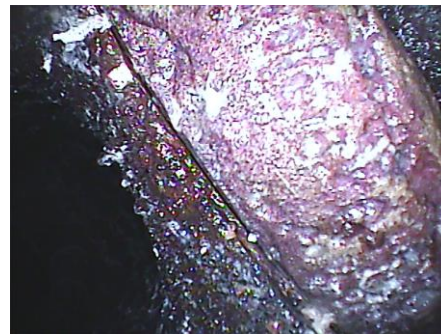
Outer Idle end Rotor Blades in good condition.



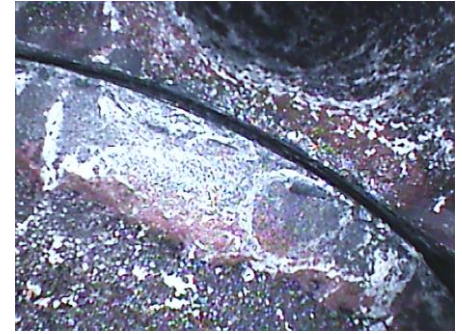
Idle end cone cladding peeled, rotor taper grooved at the tip.



Idle end rotor taper at the tip is grooved.



Drive end rotor taper clearance at the small diameter is good



Idle end rotor taper clearance at the small diameter is excessive.