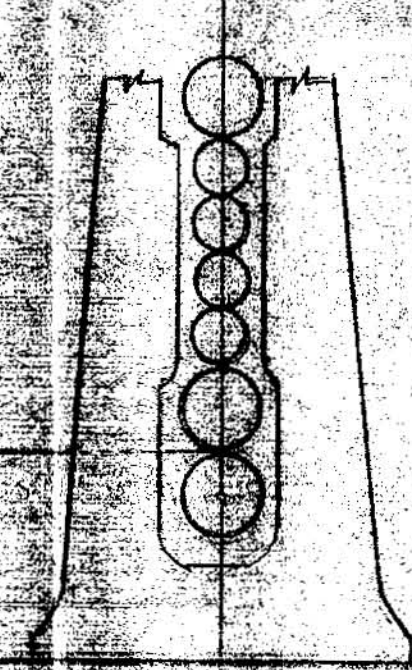
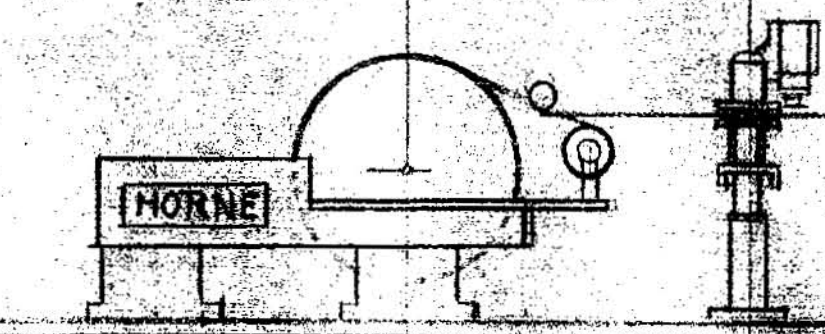
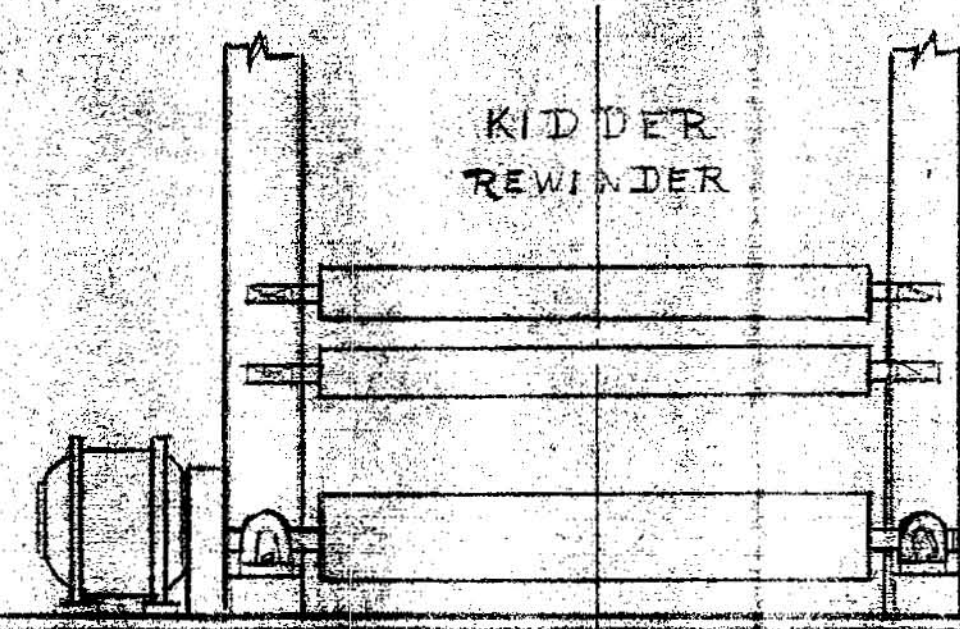
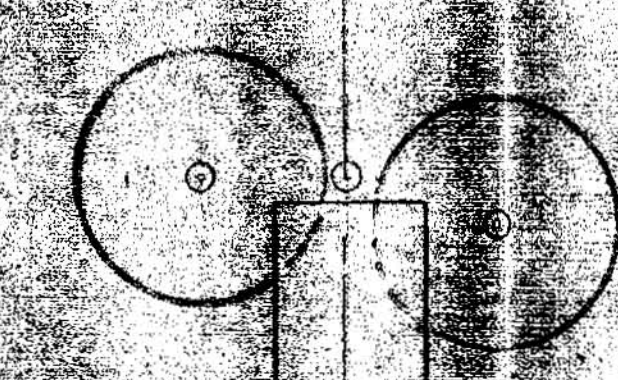


AIR DRYER UNWIND STANDS EXISTING

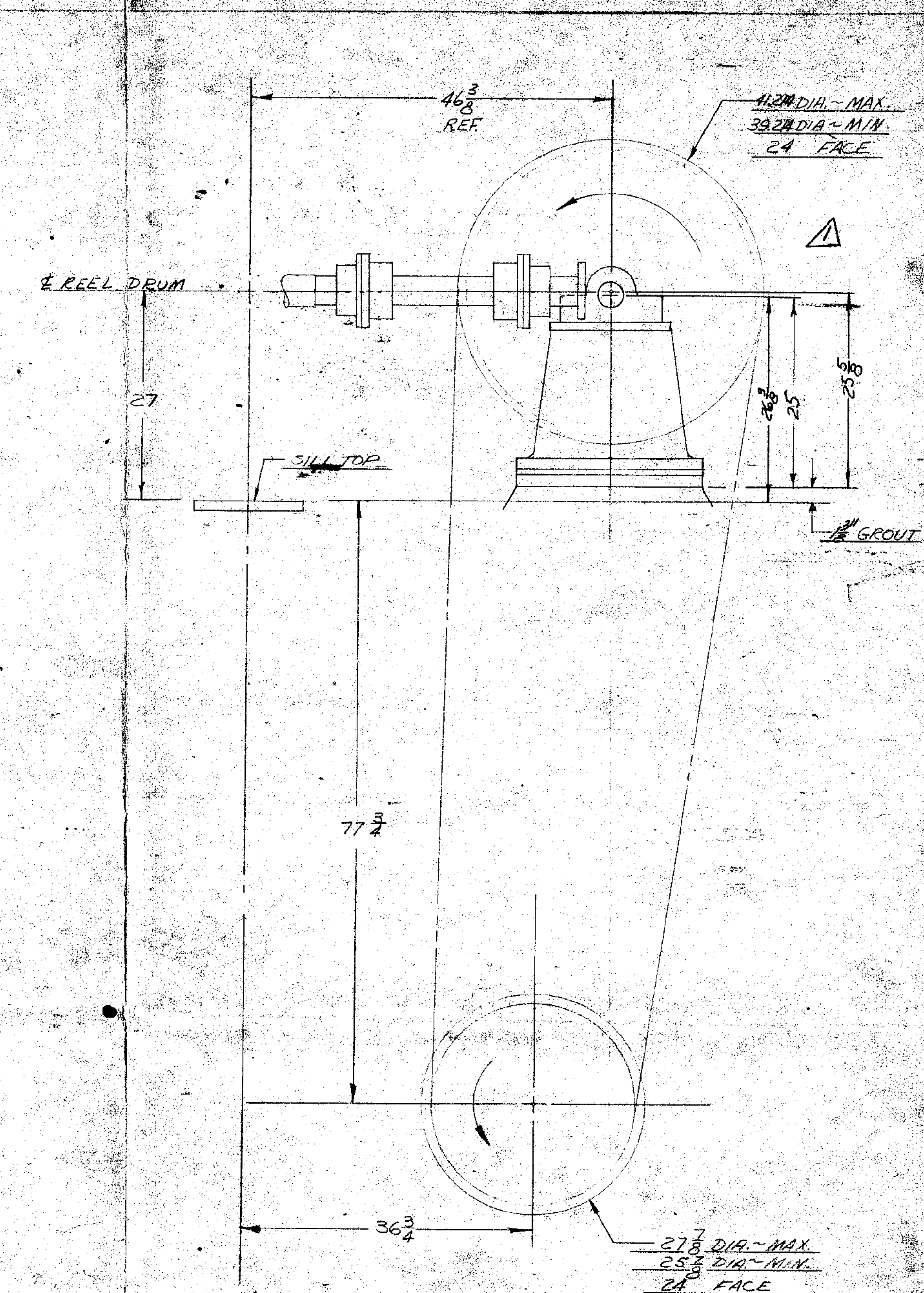
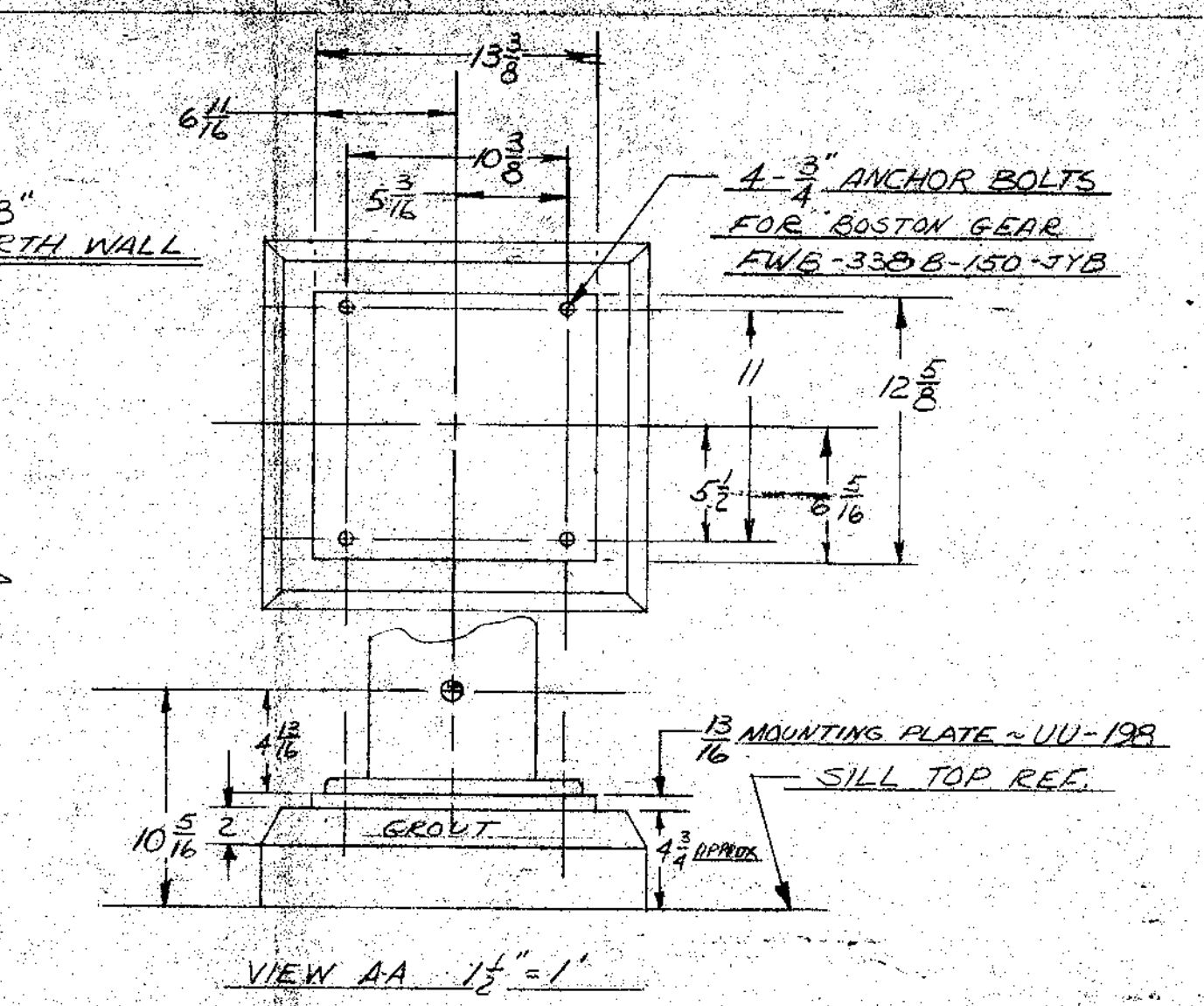
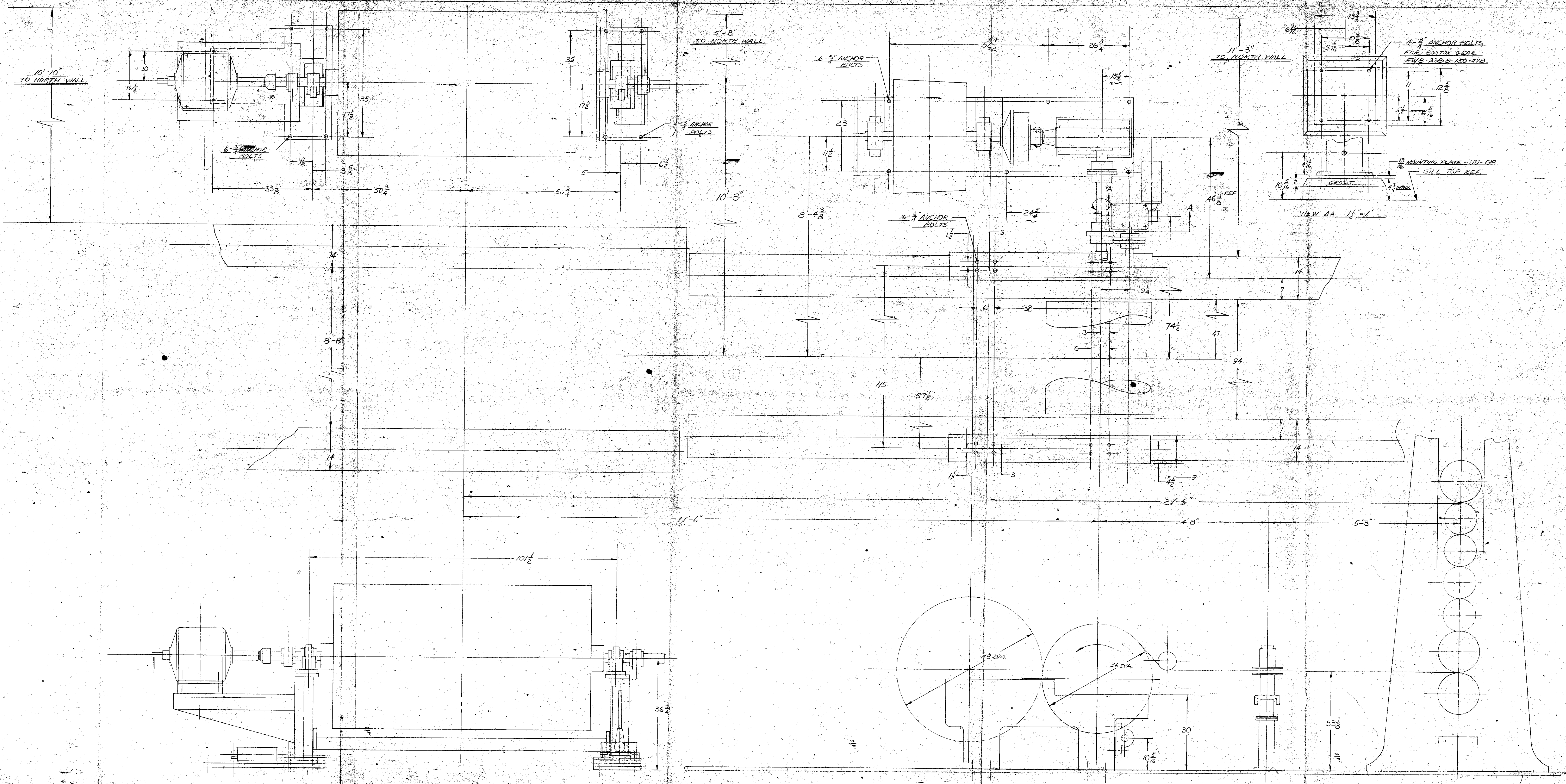
WINDER RELOCATION

J.H. HORNE HORIZONTAL REEL

L.I.F.E. BASIS WEIGHT GAUGE



RISING PAPER COMPANY			
HOUSATONIC, MASSACHUSETTS			
DRAWN	J.H.B.	SCALE	3/4" = 1'
CHECKED		REVISIONS	
APPROVED		DATE	
DATE	9/4/73	TITLE	HORNE HORIZONTAL REEL & WINDER LOCATION NO. MACHINE
		NO.	M-581-2

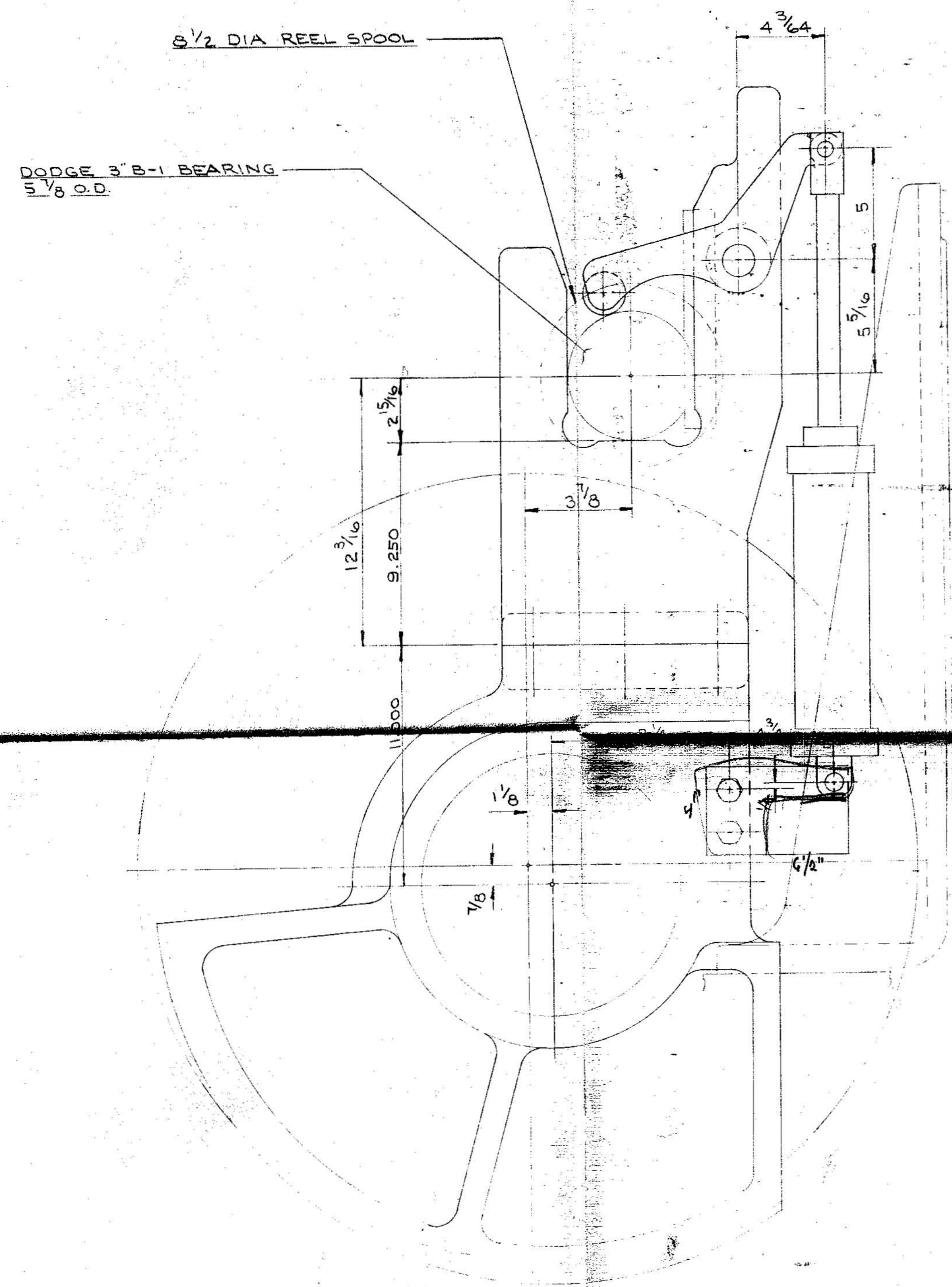


REEL SPEED: 402 fpm @ 450 fpm LINE SHAFT

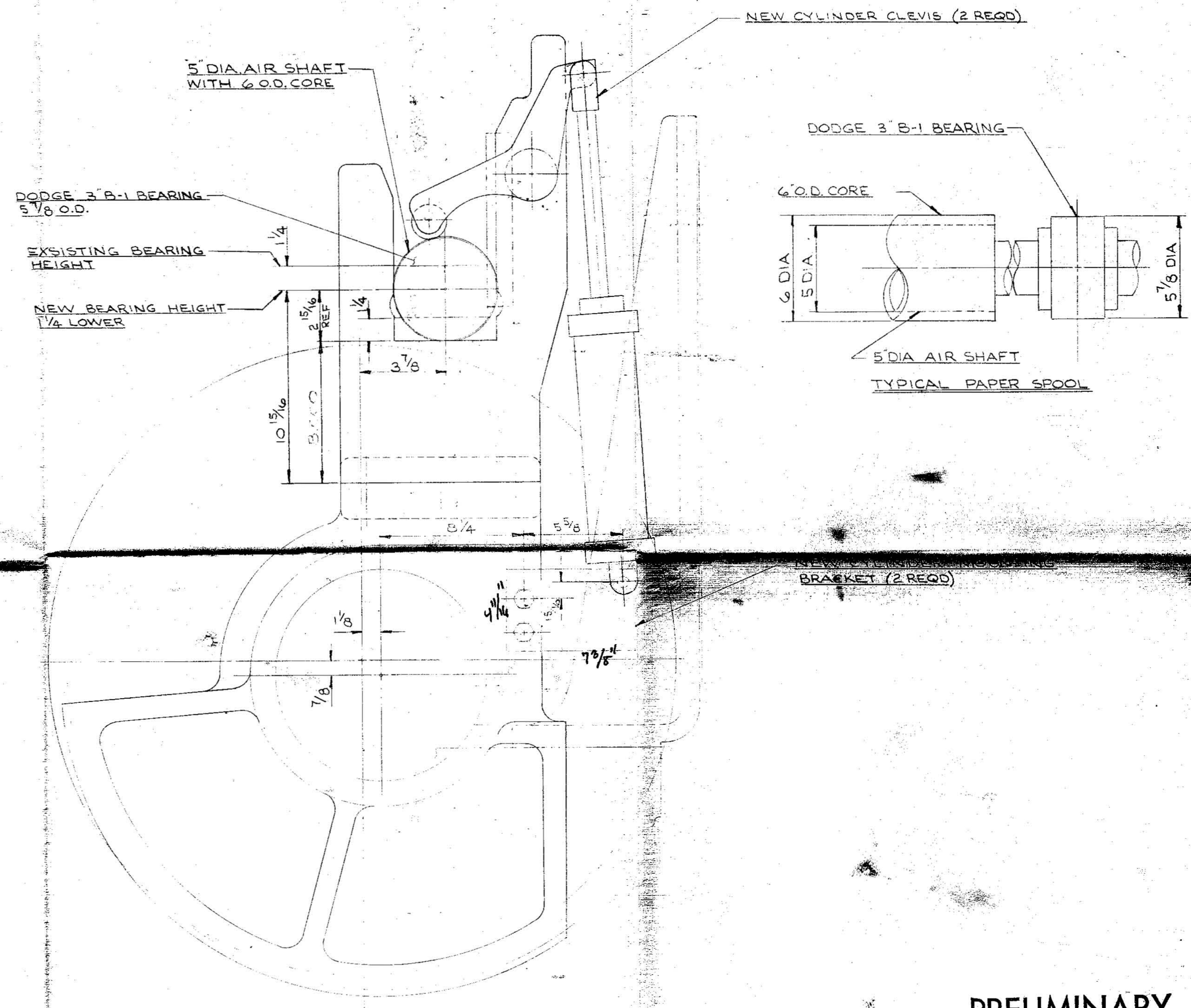
FOR APPROVAL
 J. H. HORNE & SONS CO.
 LAWRENCE, MASS.

NOV 28 1973

REV	DATE	DESCRIPTION
1		1/2\"/>
J. H. HORNE & SONS CO. LAWRENCE, MASS. PLAN - RISING REEL UNWIND		
DRAWN	BY	DATE
FILE	NO.	SCALE
OCT 4 - 73		PLAN - E - 37



EXISTING METHOD USING
5 1/2 DIA REEL SPOOL



PROPOSED METHOD USING
5 DIA NYLON AIR SHAFTS

PRELIMINARY

JUN 10 1976

DESIGN		SCALE	
RISING PAPER CO.		3" = 1'-0"	
PROPOSED REEL SPOOL		DATE 10JUN76	
RISING PAPER CO.		DRAWN LuChane	
NO. NO.		CHECKED	
10JUN76		APPROVED	
NO. SK-1150			