

KARLVILLE

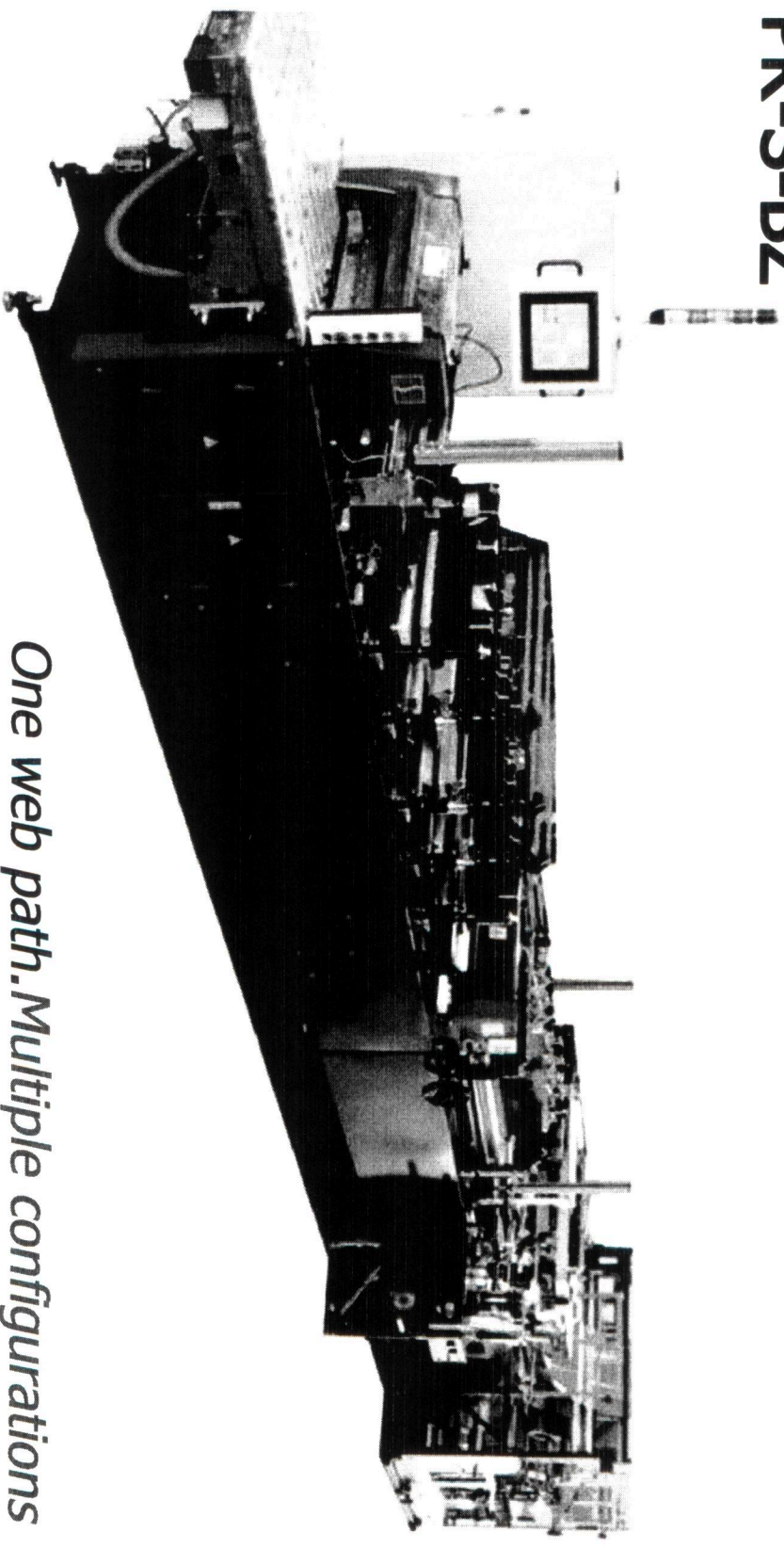
DEVELOPMENT GROUP

Machine Specifications

KARLVILLE

DEVELOPMENT GROUP

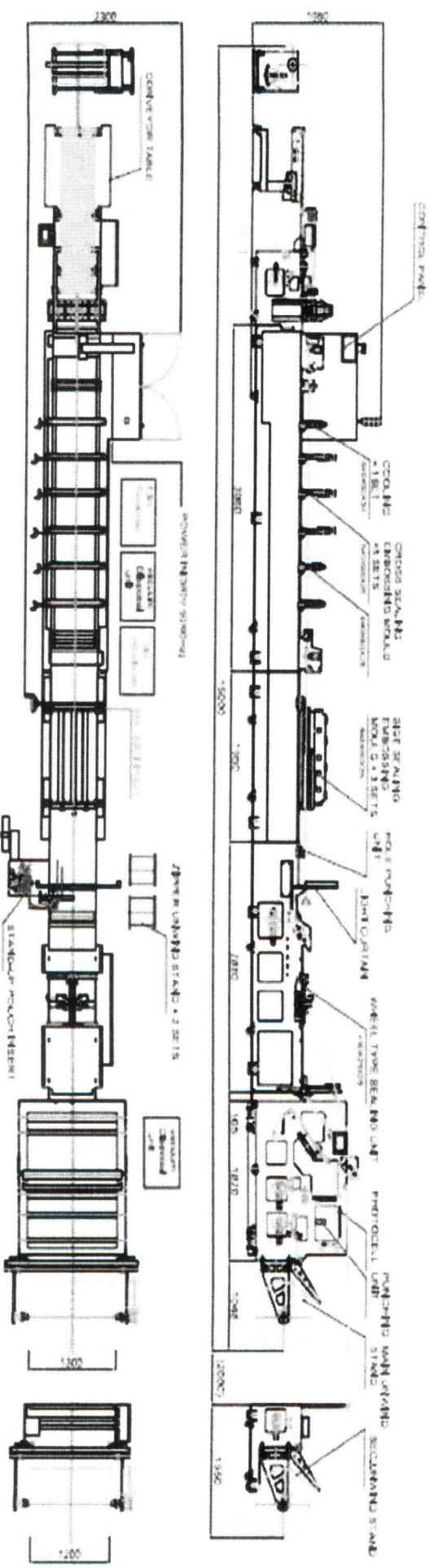
KSG 600 PR-S-BZ



One web path. Multiple configurations

KARLVILLE
DEVELOPMENT GROUP

Detailed Layout-KSG Pouch Machine



KARLVILLE

DEVELOPMENT GROUP

Machine Specifications

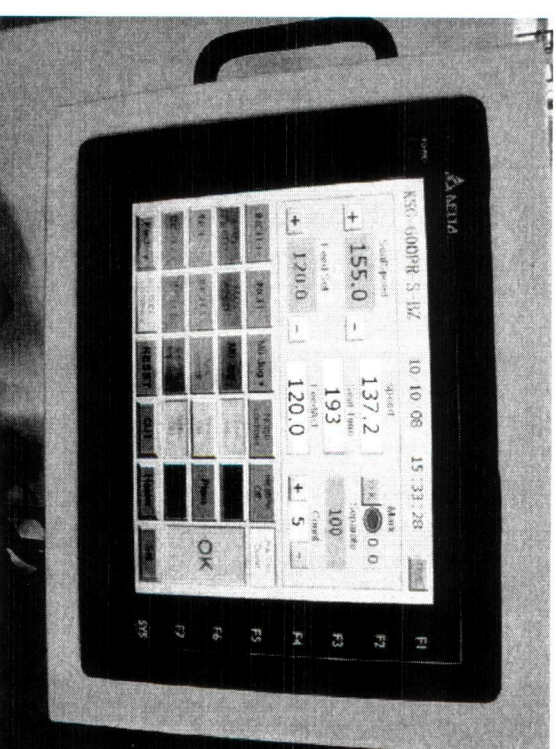
Motors

- Main Motor: Servo 3.5 KW
- Motor for Conveyor: AC 1 KW with Inverter Control
- Motor for Unwinds: AC1 KW with Inverter Control
- Motor for Front Draw Nip Roller: Servo 1.0 KW
- Motor for Middle Draw Nip Roller Unit: Servo 1.0 KW
- Motor for Rotary Sealing: AC 0.75 KW

Control System: PLC with HMI Touchscreen Interface

Heater: 42 KW

Color: Karlville Blue and Offwhite Cabinets



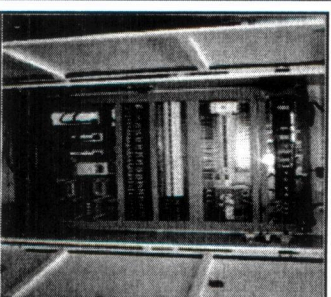
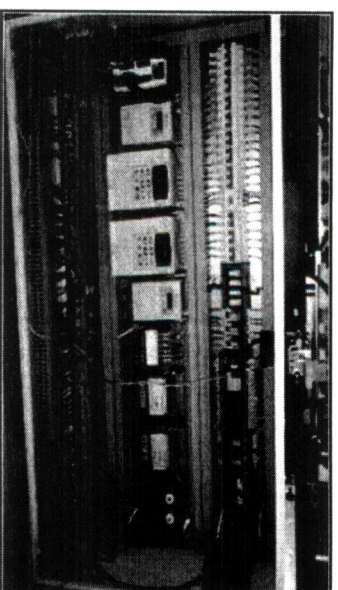
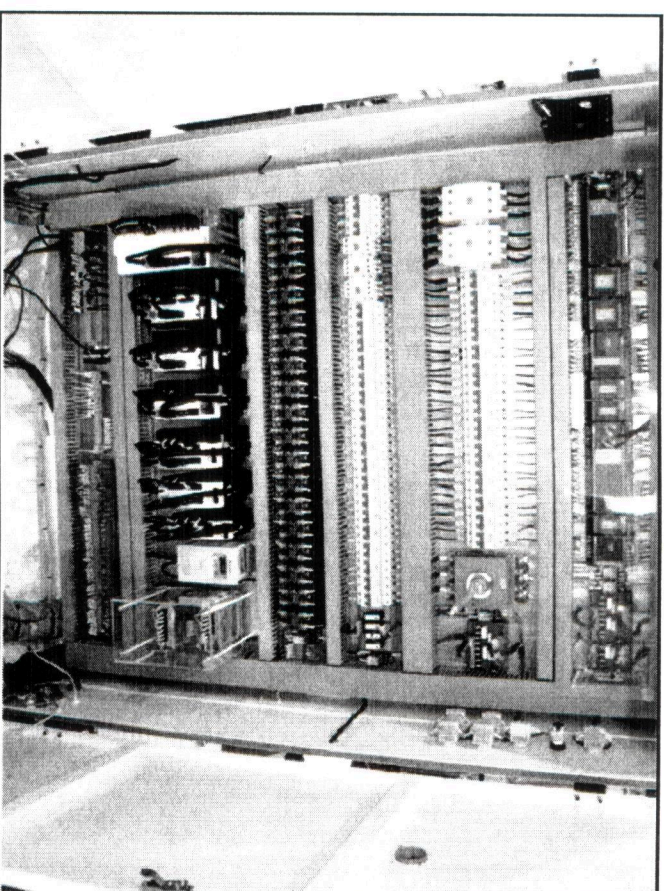
HMI Touchscreen

KARLVILLE

DEVELOPMENT GROUP

Machine Specifications-Electrical Cabinet

- Panasonic ServoDrives and Motors
- Delta Inverters
- Delta Touchscreen for Operatot Interface
- Delta Frequency Drives
- Sick Photo Eyes
- FATEK PLC Control System with Memory Backup
- Solid State Relays
- Merlin-Gerin Breakers

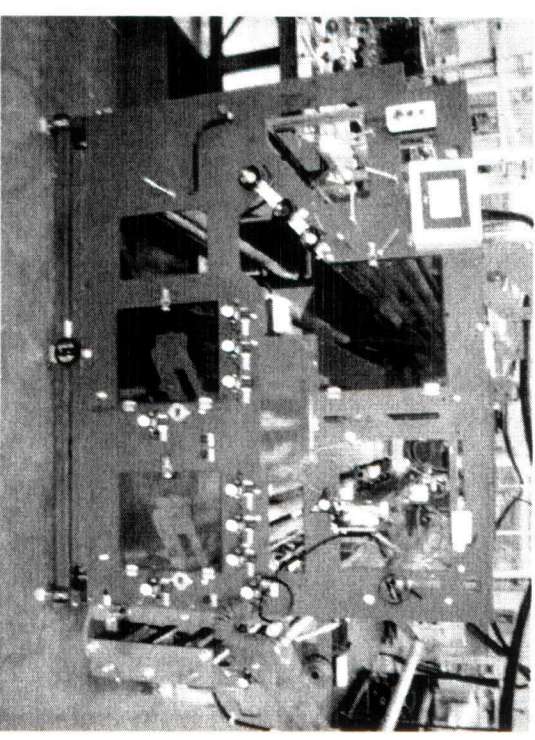


KARLVILLE

DEVELOPMENT GROUP

Rear Machine Including Universal Unwind

- Shaftless Unwind Stand with Hole Punching Device
- Unwind Diameter of 800 mm with 3" Shaftless Device Holder. (Shaftless can be adjustable)
- 0.55 Kw gear reducer drive with inverter control for unwind unit for continuous motion unwinding
- LPC Sensor for Unwind Material for Edge Guiding
- Photo Sensor
- Dancer Roller Device
- Pull Roller for Feeding with 1.0 W Servo Motor with Control
- Moveable Unwind Stand Left/Right.
- Smallest Footprint for Unwind
- Material Infeed Device with Pneumatic Pulling Control
- Hole Punching Device for Stand-Up Pouch and Pet Food with Removal

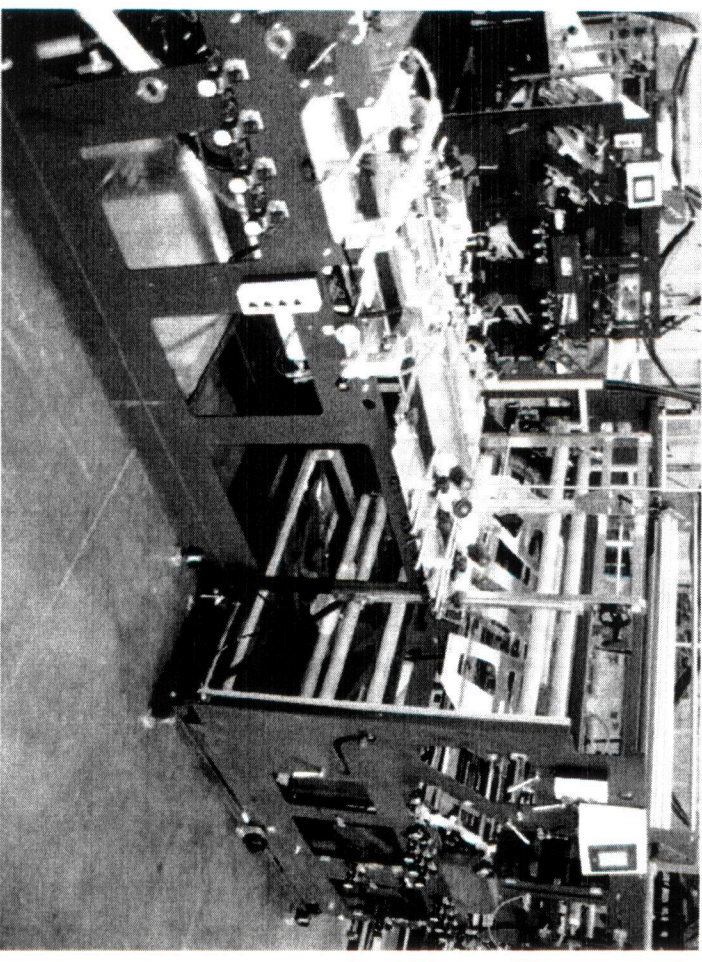


KARLVILLE

DEVELOPMENT GROUP

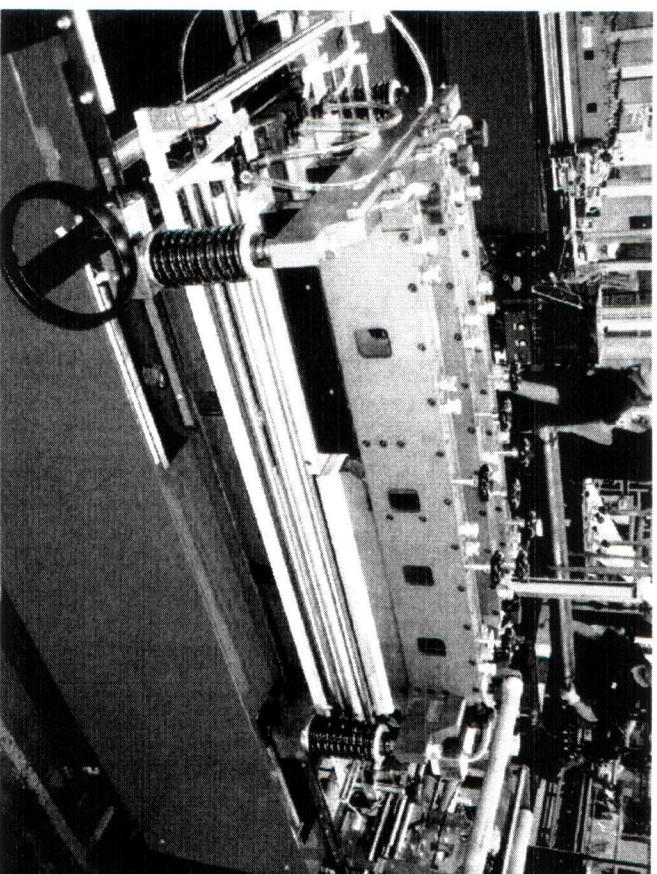
Rotary Sealing Station

- Wheel Rolling type Sealing Device
- Dancing Roller for Tension
- Fin Seal, Offset Fin, Lap Seal Application
- Constant Motion
- Automatic control for Start and Stop of Machine



Middle Frame Assembly

- Side seal embossing mould with moved device
- Updown Heating Bar: 650 mm X 40 mm
- Cooling Bar
- Insert Gusset Unwind, with Folding and Punching
- Zipper Guides and Mounting Bracket
- Flyover assembly for Top Web (For use with two and three web configurations)
- Draw nip roller with servo control with Photo Sensor



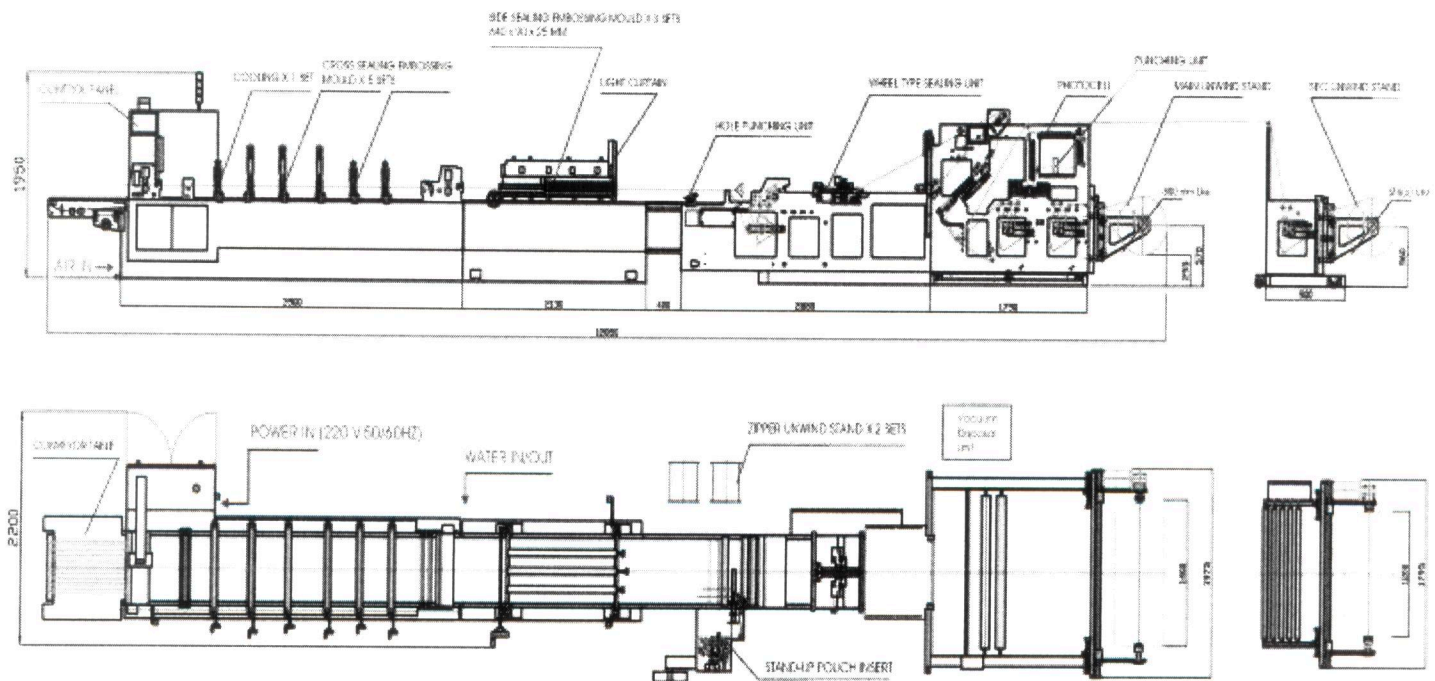
KARLVILLE DEVELOPMENT GROUP

175 SW 7th Street, Suite 2105 Miami FL 33130

MACHINE SPECIFICATIONS KSG LAYOUT & GENERAL SPECIFICATIONS

SPECIFICATIONS:

- MATERIAL WIDTH : 1400 MM (MAX)
- MATERIAL DIA : 800 MM (MAX)
- POUCH WIDTH : 50-600 MM
- POUCH LENGTH : 30-600 MM – (300 MM X 6 =1800 MM)2-6 skips
- MACHINE SPEED : up to 45M/MIN. OR 180 SHOT/MIN.
- POWER : 208-230, 3 PHASE, 50/60 HZ.



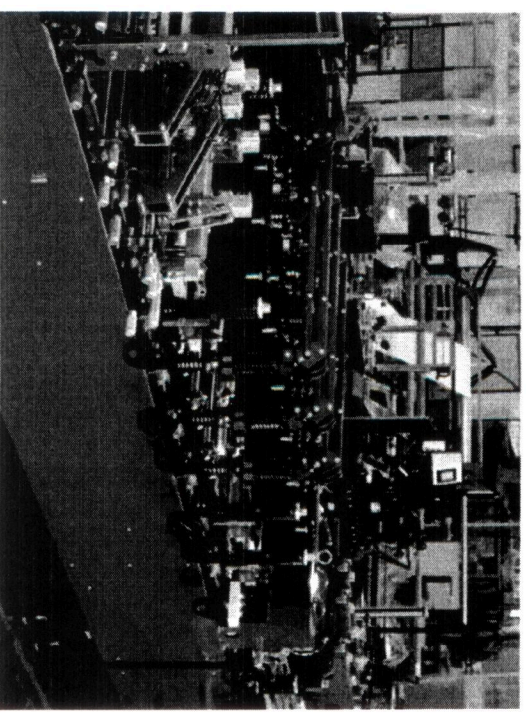
KARLVILLE

DEVELOPMENT GROUP

Main Frame Assembly

- Cross Seal Embossing Mould
- UP/DOWN Heating Bar
- Cross Water Cooling Mould
- Photo Sensor
- Punching Unit with Small Mold
- Punching Unit with Sombrero Mold
- Punching Mold Round (8 mm)
- 45 Degree Adjustable "K" Seal Mold with Accesories
- T-Seak Tooling for Station 4 and 5 for Tamper Evident 3 Side Seal Zipper Pouches
- Pouch Out Feed Device with Servo Control
- Flat Cutter
- Static Eliminator
- Conveyor Table
- Trim Rewinder
- PLC Control System with Touch Screen Control Panel
- Light Curtains for Safety Barrier

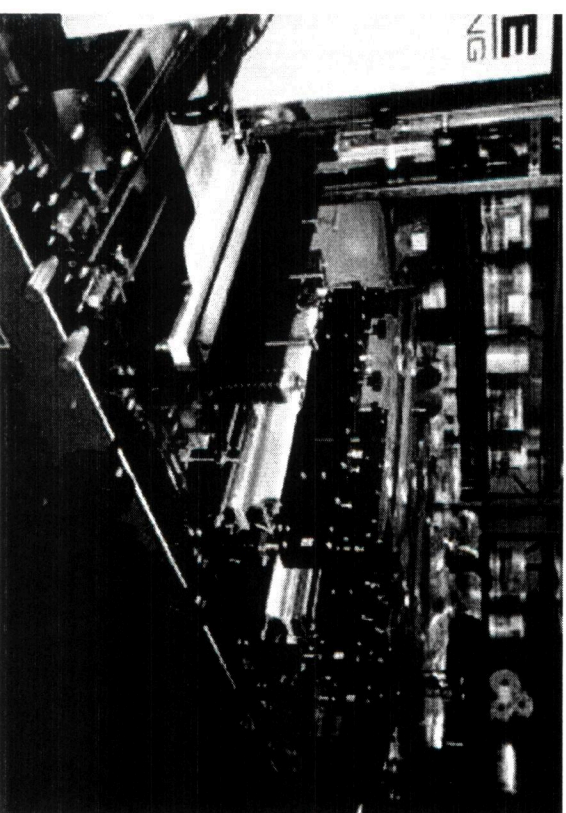
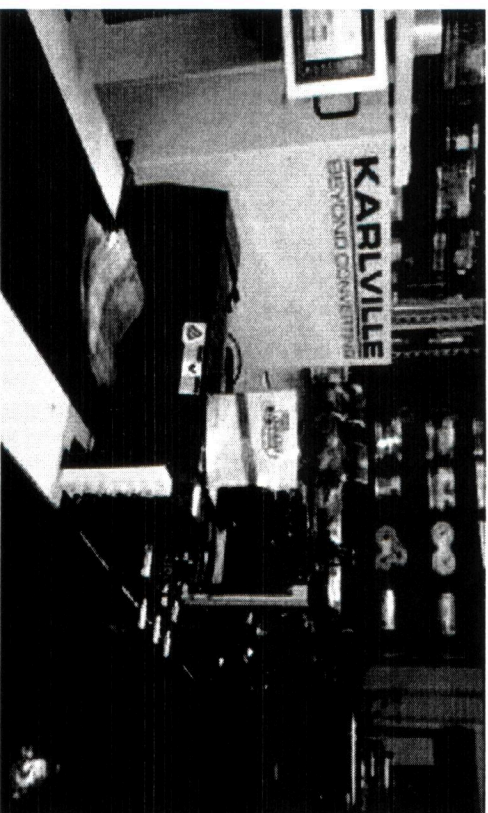
New Sealed Head Design



KARLVILLE

DEVELOPMENT GROUP

- HMI touch screen
- English Language
- High speed cutting guillotine
- Servomotor control for feeds and sealing stations
- Photo registration with averaging
- Up to 4 frames for tear notch, hang or sombrero hole included
- Skip cycle up to 6 times on all cross seal stations
- Quick die removal system/Universal placement throughout machine



Main Unwind with Folding Section

- Small footprint
- Common Setup for "1" Web operation. Side gusset, one web Standup pouch 2-up, 3 side seal, 2 side seal 2up, coffee, and pet food with same Web path
- AC Driven unwinds
- Quick release roll change and 3" or 6" shafting...both systems.
- Servo controlled feed system
- Notch with Photo Registration and averaging
- Roll edge guides
- Special "SOFT" folding device for gussetting without stressing material
- Entire unwind on separate linear guide for quick changeover and alignment from standup to Side gusset without re webbing machine

Main Unwind Benefits

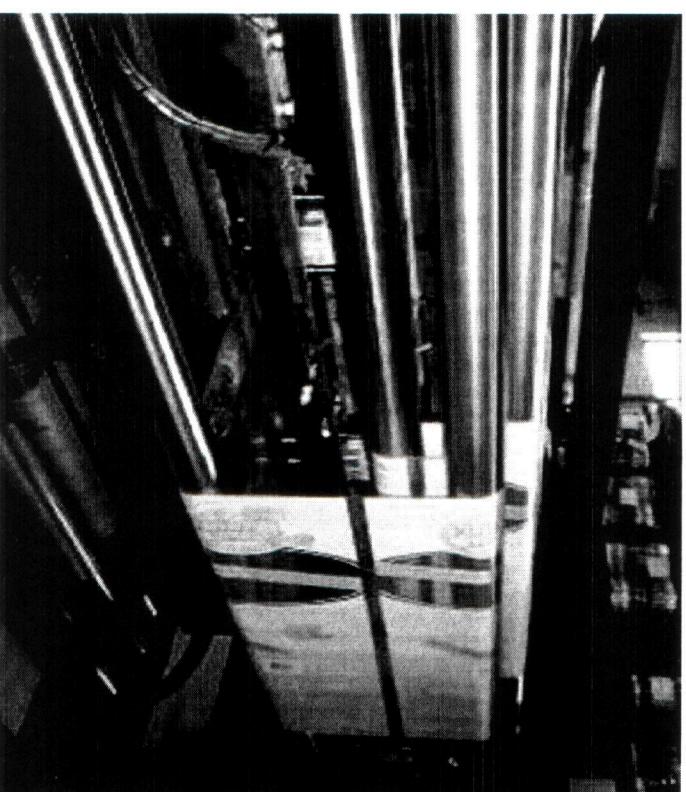
- 3" and 6" cores with shaft less system and pneumatic closure
- Compound dancers with mechanical "dead band" and computer electronic scaling for constant motion
- Use of rollers in vertical position for punch window.
- Rear HMI control screen
- Web folding mechanism for safe and constant motion folding.
- MOST COMPACT DESIGN WITH 1400 MM width

KARLVILLE

DEVELOPMENT GROUP

Rear Punching Benefits

- Small window for punch adjustment.
- Compact system
- Photo Eye with averaging
- Servo controlled placement
- Vacuum removal
- Independent adjustment front to back and left to right
- Pearl punches easily changeable without tools.

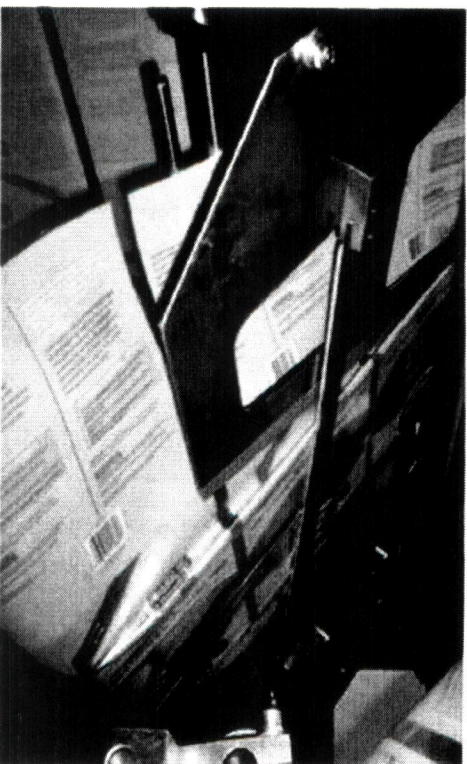
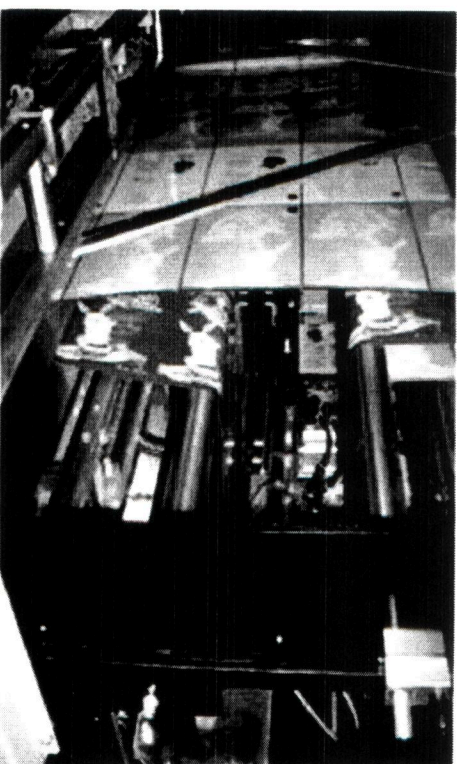


KARLVILLE

DEVELOPMENT GROUP

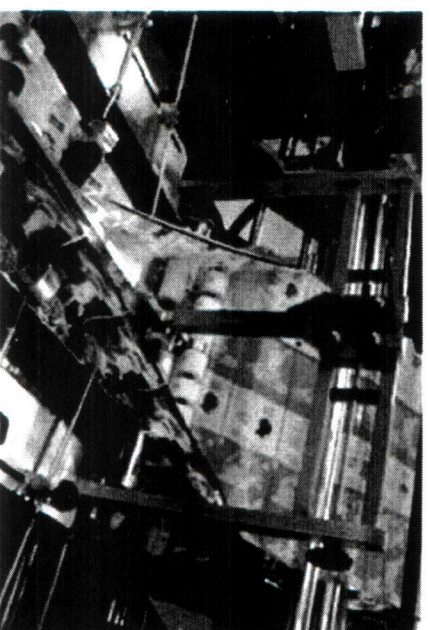
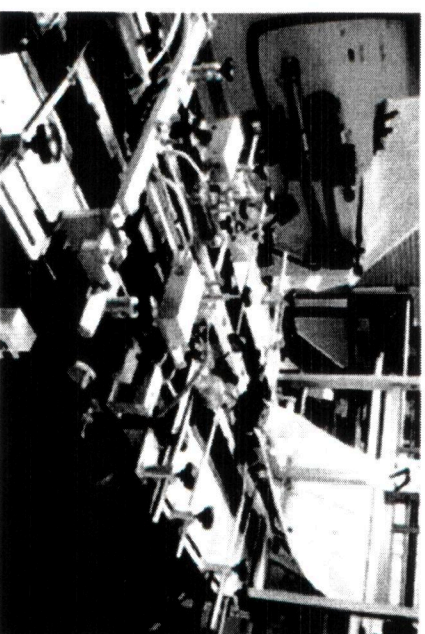
Servo Drive and Folding

- Dual feed with servomotor, working with photo eye or fixed step for hole punch
- True soft folding device for a variety of bag sizes. Gussets for both side and bottom are done with hand wheel adjustment
- Easy size change operation with simple movement and minimal parts removal



Constant Motion Section-Rotary Sealing and Final Folding

- Constant motion for sealing and folding
- Folding wheels and forming plate for side gusset and standup pouch
- Rotary sealing for fin seal on pet food, coffee, and side gusset pouches.
- Adjustable positioning for all components
- Automatic operation opening and closing of seal stations to sync with the constant motion section.

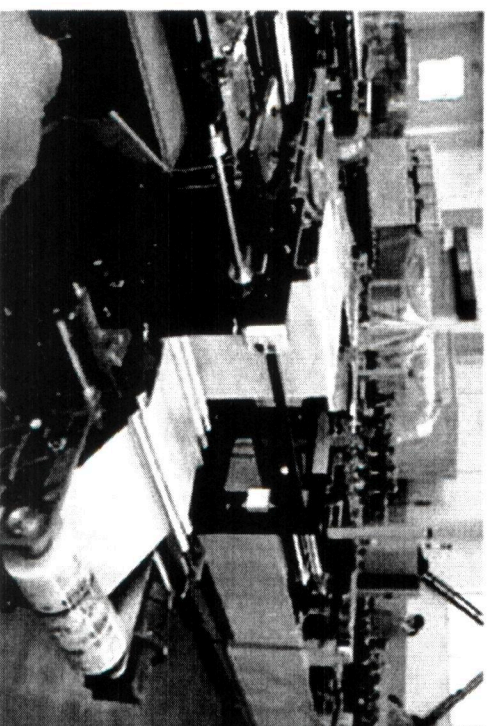
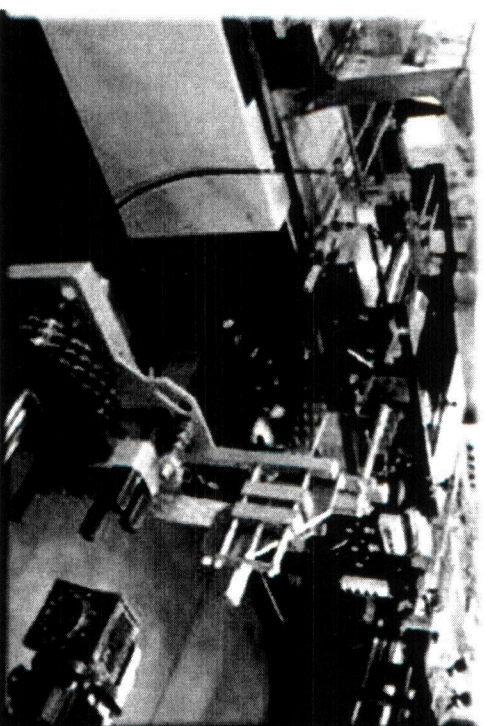


KARLVILLE

DEVELOPMENT GROUP

Insert Gusset and Top Web Unwind

- Insert gusset unwind, with folding and punching close to the Seal station for precise gusset registration
- Driven unwinds with 3" shaft controlled by a dancer
- All unwinds load from floor easily with pallet jack
- Top web unwind with dual zipper unwinds with 3" and 6" cores with shaft less system and pneumatic closure
- Turn bar and web guide controlled
- Quick adjustment roll setup
- Top Web Unwind can be removed from machine (casters and leveling feet)

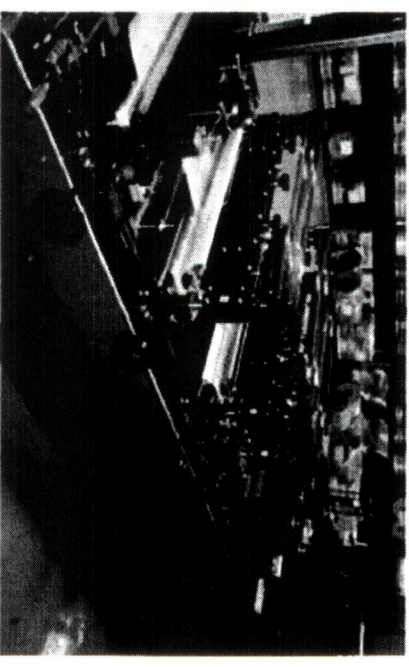


KARLVILLE

DEVELOPMENT GROUP

Longitudinal and Cross Sealing Stations

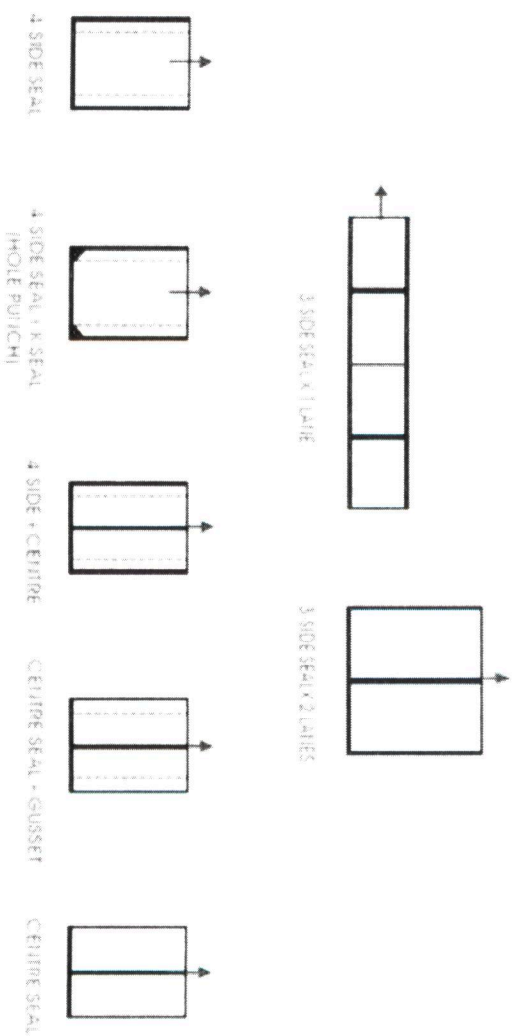
- 3 Longitudinal Seal bars (1 for Zipper Heat Seal and Cooling and 2 for K seal, Doy-seal, and straight seals)
- 2 Cross heat seal station for K seal and zipper crush
- 3 Cross air actuated Heat Seal Stations with Air blast cooling
- 1 Cross cooling station
- Easy seal bar changeover for Cross and longitudinal
- Photo eye control for Doyne-hole punch registration
- All seal bars interchangeable between stations
- Independent temperature control for both upper and lower heaters for all seal bars.



Pouch Configurations

KSG POUCH MACHINE-PRODUCT TYPES

- CENTER SEAL POUCH
- PET FOOD AND SIDE SEAL POUCH
- TWO SIDE SEAL/FOLDED POUCH WITH OR WITHOUT ZIPPER
- 3 SIDE SEAL POUCH WITH OR WITHOUT ZIPPER
- 3 SIDE SEAL POUCH WITH TWO MATERIALS
- BOTTOM GUSSET STAND-UP POUCH
- BOTTOM GUSSET STAND-UP ZIPPER POUCH
- INSERT BOTTOM GUSSET WITH ZIPPER POUCH



KARLVILLE

DEVELOPMENT GROUP

CENTER-QUAD COFFE AND TOSTITOS POUCHES



KARLVILLE

DEVELOPMENT GROUP

BIOTECH POUCHES



KARLVILLE

DEVELOPMENT GROUP

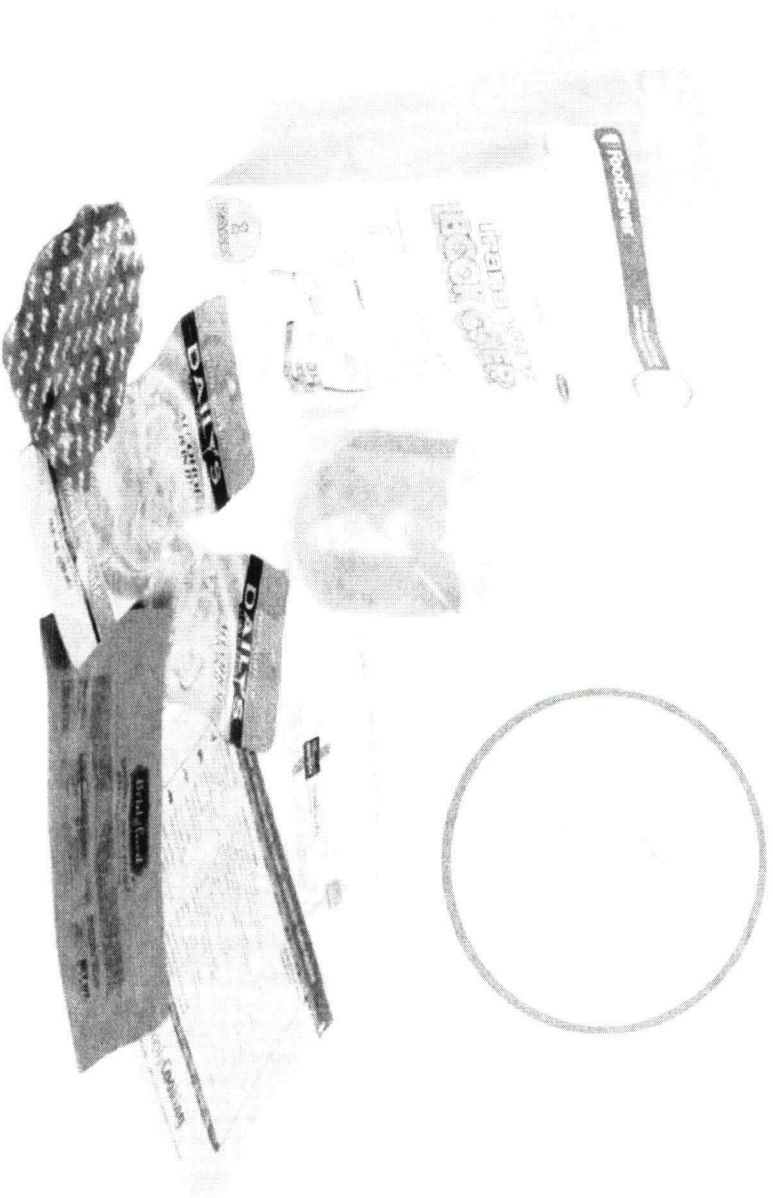
STAND UP POUCHES



KARLVILLE

DEVELOPMENT GROUP

SPECIALTY POUCHES



KARLVILLE

DEVELOPMENT GROUP

Die Cutter-Inline

The Die Cutter can be integrated to the KSG Pouch Machine.

It allows customers to make multiple pouch designs.

