



Caterpillar Diesel Black Start Generators

Available from March 2022,

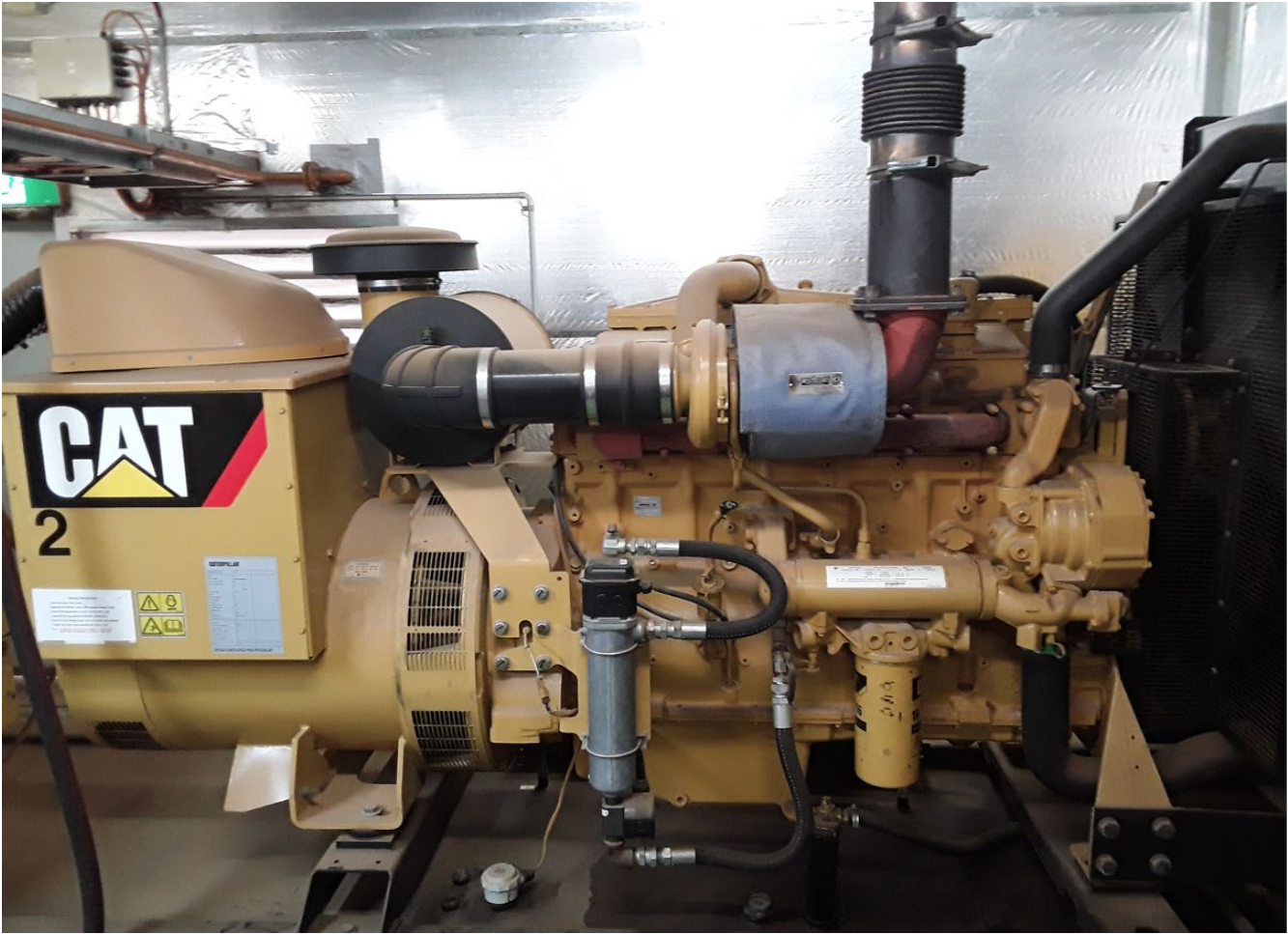
Two Diesel Cat 3406 280kW Generators with Woodward EasyGen3000 Controllers

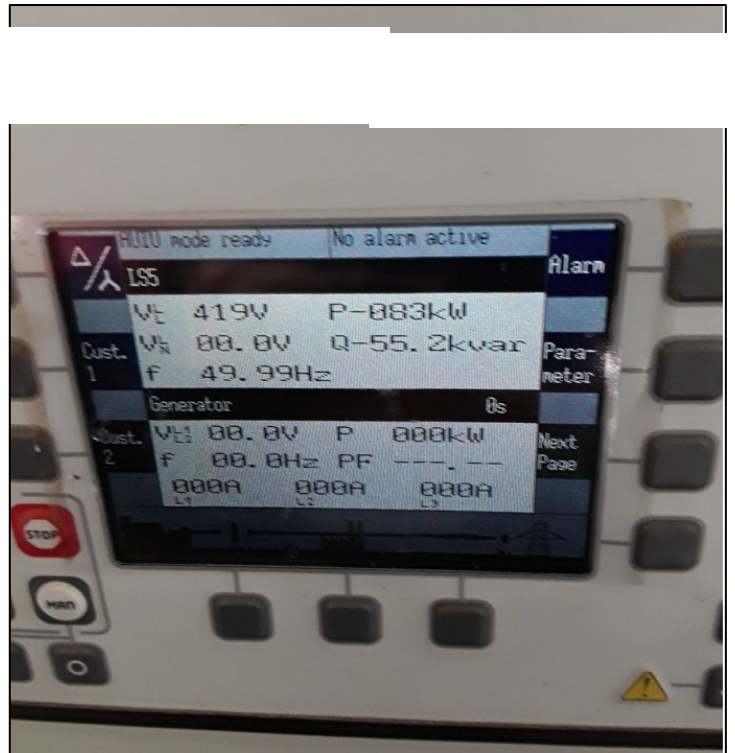
Annual upkeep and servicing has been provided by Caterpillar since install.











CATERPILLAR®		
GENERATING SET ISO8528		
MODEL	350	
YEAR OF MANUFACTURE	2010	
RATED POWER-STANDBY	350	kVA
	280	kW
	0.8	COS Ø
RATED VOLTAGE	415/240	V
PHASE	3	
RATED FREQUENCY	50	Hz
RATED CURRENT	487	A
RATED R.P.M	1500	
MAXIMUM ALTITUDE*	152.4	m
MAXIMUM AMBIENT TEMPERATURE*	25	°C
MASS	3453.9	kg
DIMENSION L*W*H	4264.3*1110*2150	
PERFORMANCE CLASS	G3	
GENERATOR	F6B01770	
GENERATOR CONNECTION	S-STAR	
RATING ISO 8528-3	PR	
GENERATOR ENCLOSURE	IP23	
INSULATION CLASS	H	
EXCITATION VOLTAGE	34	V
EXCITATION CURRENT	3.45	A
ENGINE	1DZ20633	

* GENERATOR SET IS DESIGNED TO OPERATE IN AMBIENT TEMPERATURES UP TO 25°C AND AT HIGHER ALTITUDES. PLEASE CONSULT FACTORY FOR OUTPUTS AVAILABLE.

CATERPILLAR®		
GENERATING SET ISO8528		
MODEL	350	
YEAR OF MANUFACTURE	2010	
RATED POWER-STANDBY	350	kVA
	280	kW
	0.8	COS Ø
RATED VOLTAGE	415/240	V
PHASE	3	
RATED FREQUENCY	50	Hz
RATED CURRENT	487	A
RATED R.P.M	1500	
MAXIMUM ALTITUDE*	152.4	m
MAXIMUM AMBIENT TEMPERATURE*	25	°C
MASS	3453.9	kg
DIMENSION L*W*H	4264.3*1110*2150	
PERFORMANCE CLASS	G3	
GENERATOR	F6B01684	
GENERATOR CONNECTION	S-STAR	
RATING ISO 8528-3	PR	
GENERATOR ENCLOSURE	IP23	
INSULATION CLASS	H	
EXCITATION VOLTAGE	34	V
EXCITATION CURRENT	3.45	A
ENGINE	1DZ20633	

* GENERATOR SET IS DESIGNED TO OPERATE IN AMBIENT TEMPERATURES UP TO 25°C AND AT HIGHER ALTITUDES. PLEASE CONSULT FACTORY FOR OUTPUTS AVAILABLE.

CAT® CATERPILLAR INC.		EMISSION CONTROL INFORMATION		2010
ENGINE MODEL	3406	DISPLACEMENT	14.6 L	VALVE LASH .38 mm INTAKE .76 mm EXHAUST
MAXIMUM RATED SPEED (RPM)	1900	6 CYLINDERS	4-STROKE	BORE 137 mm
		TURBOCHARGED	AFTER COOLED	STROKE 165 mm
THIS 3406 ENGINE IS MANUFACTURED IN AN ISO 9000 COMPLIANT FACILITY. THIS ENGINE MUST BE OPERATED ON DIESEL FUEL THAT MEETS THE MINIMUM SPECIFICATIONS FOUND IN THE OPERATION AND MAINTENANCE MANUAL				