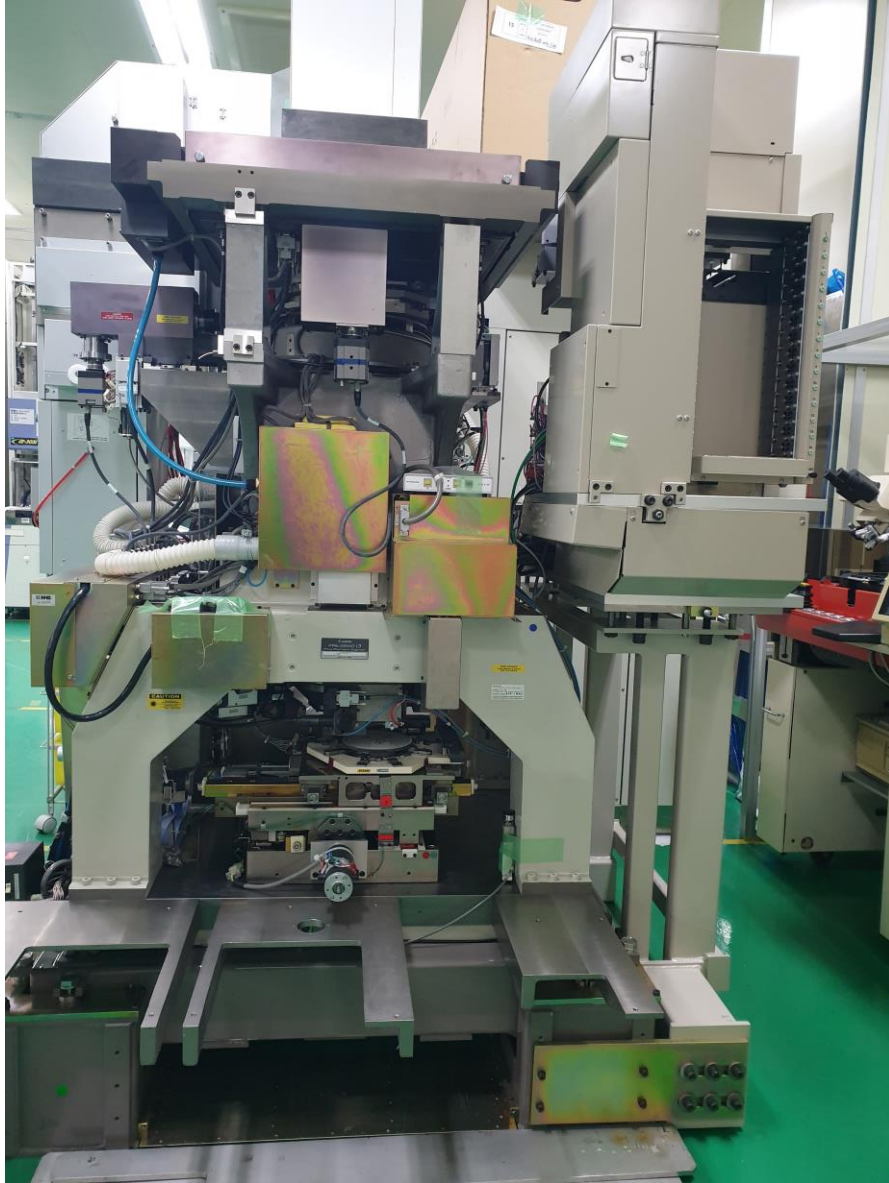
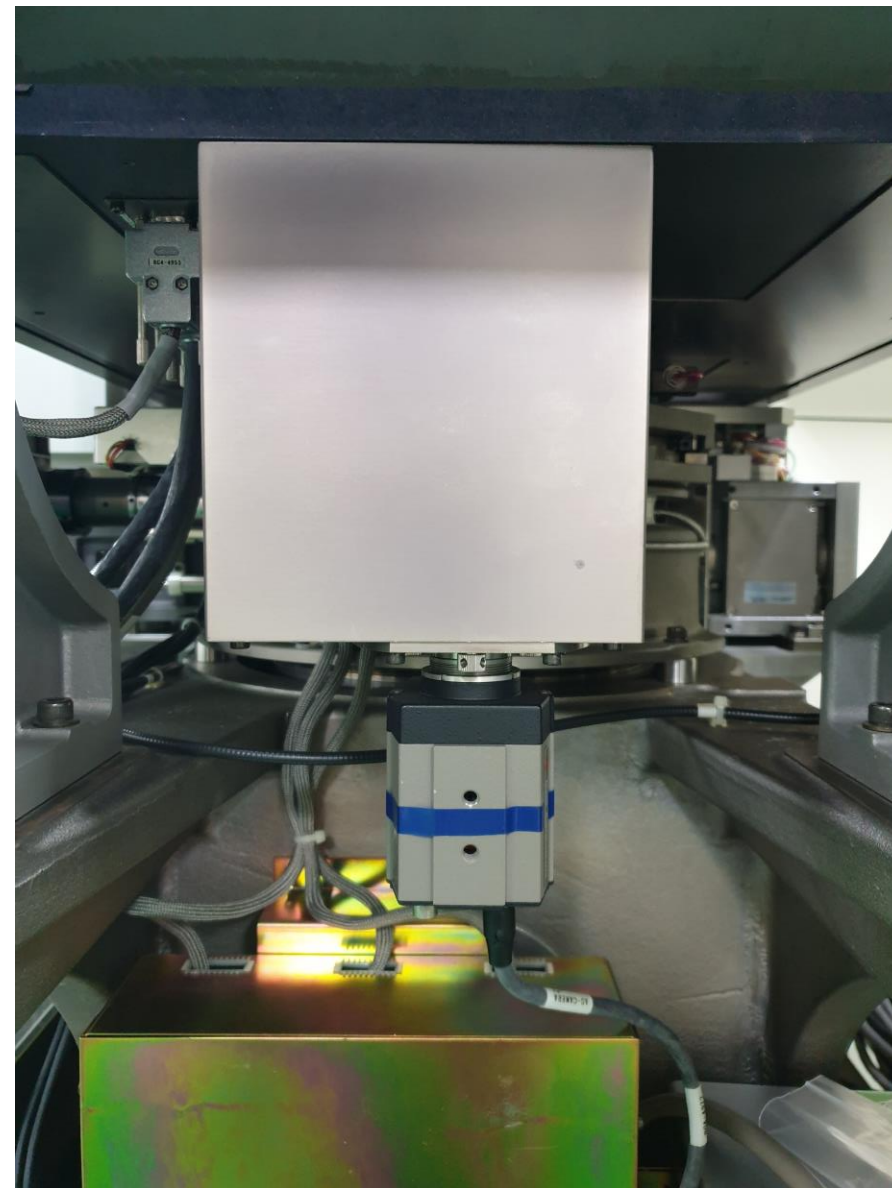
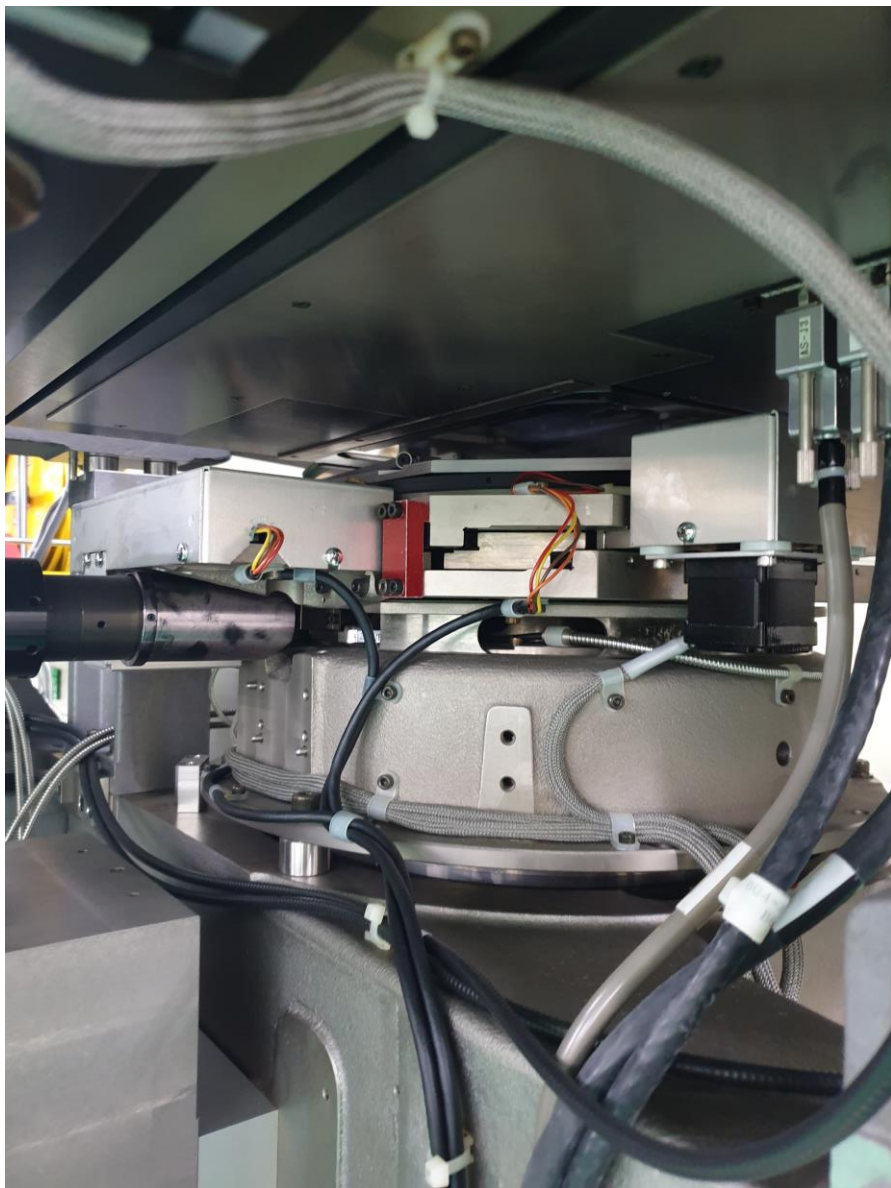
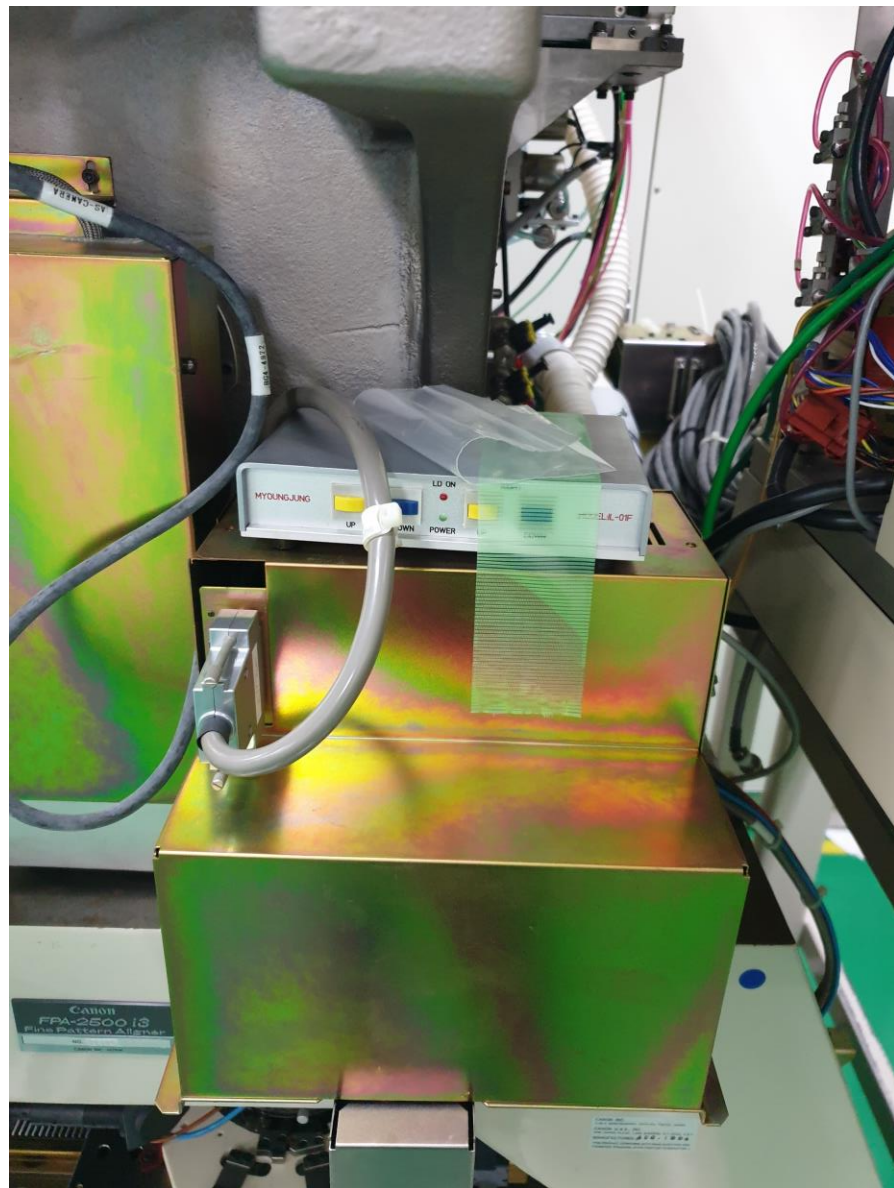
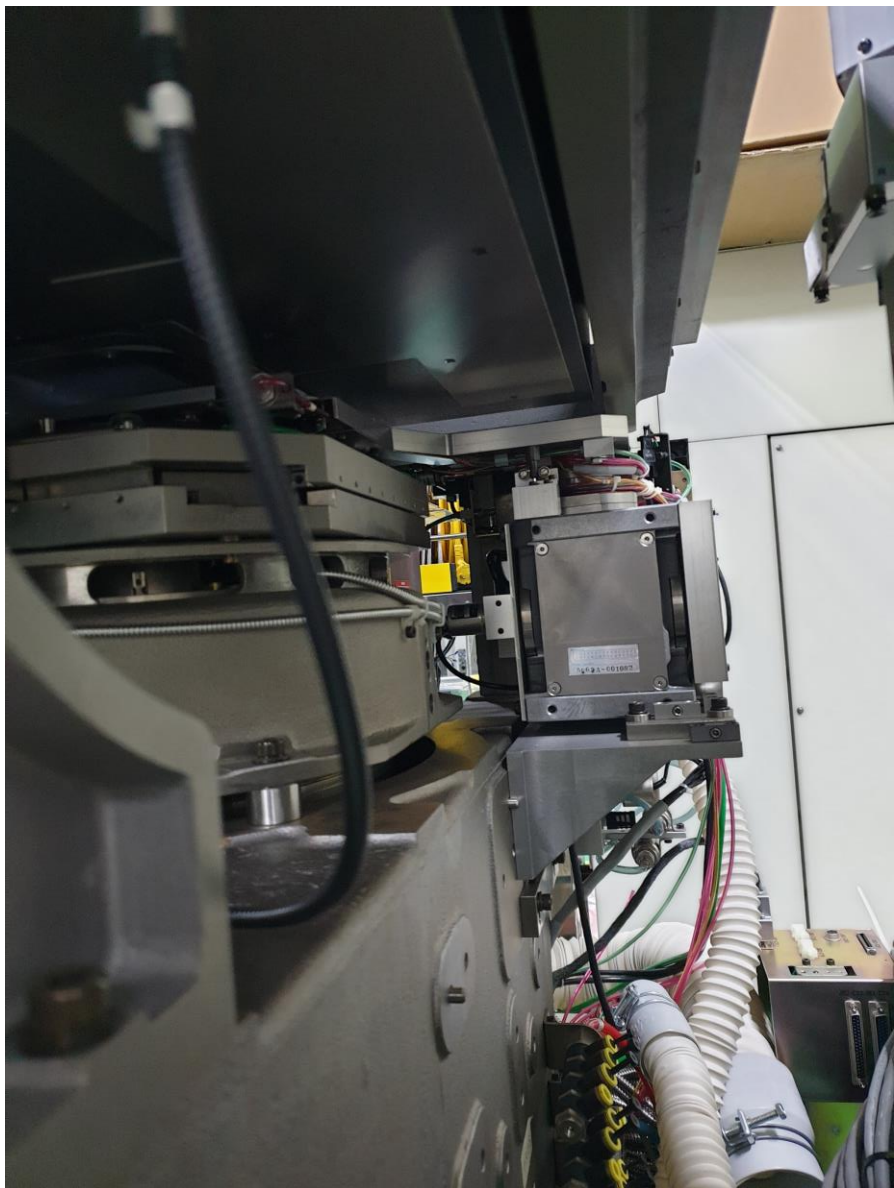


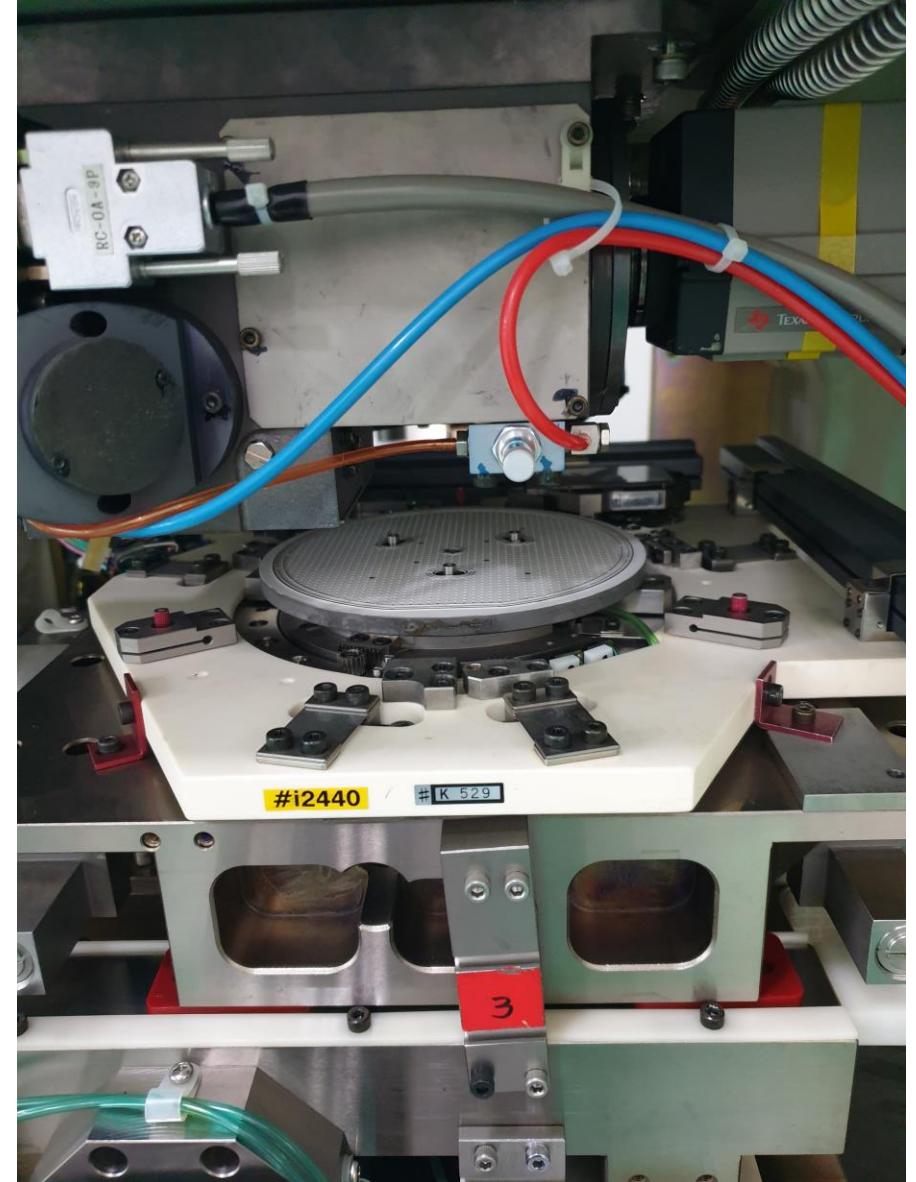
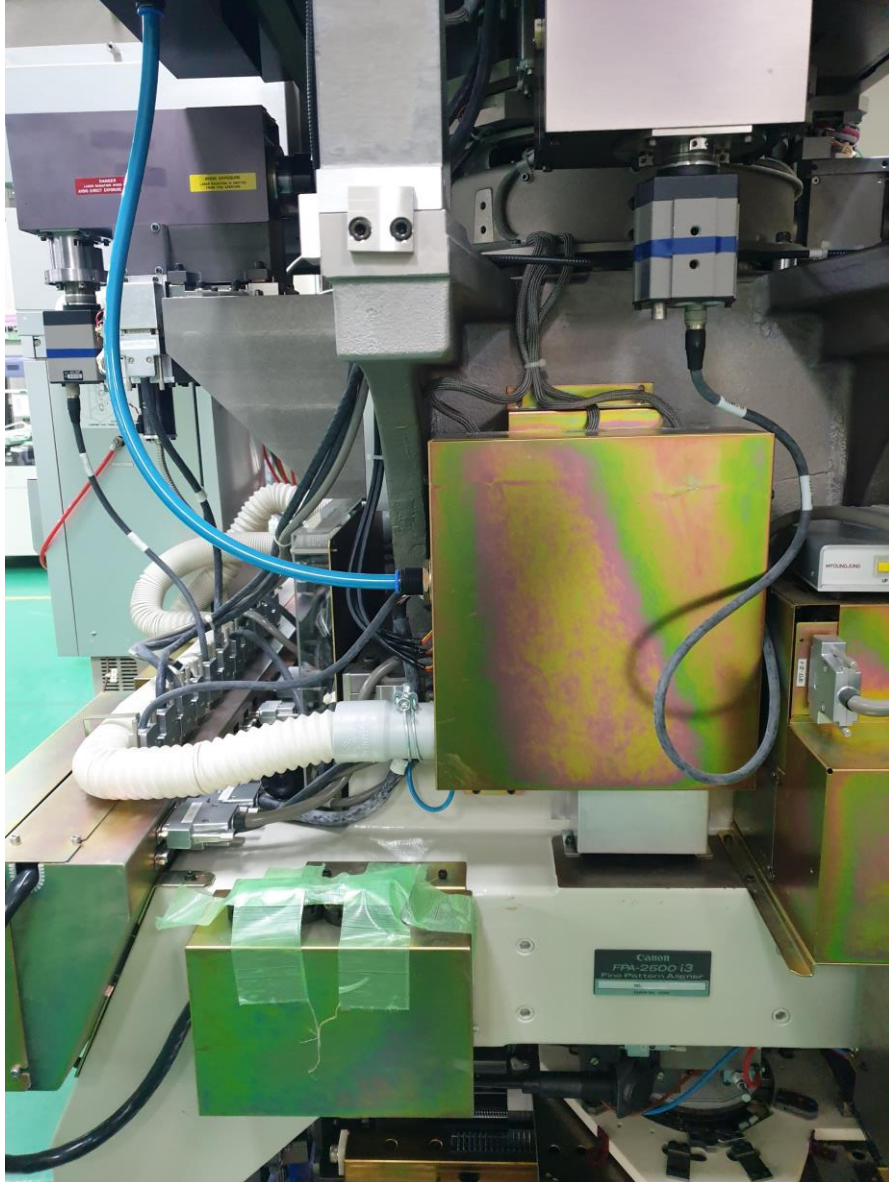
Canon FPA-2500i3

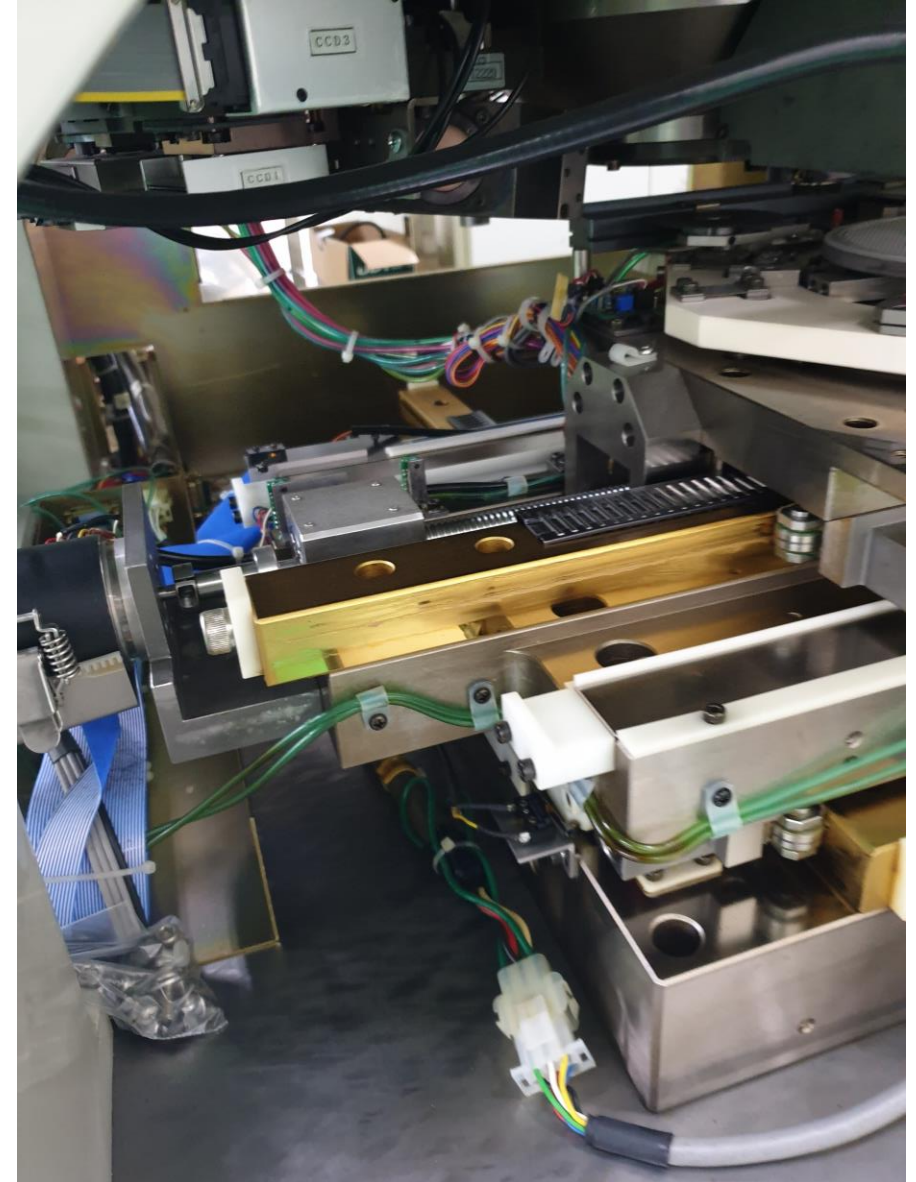
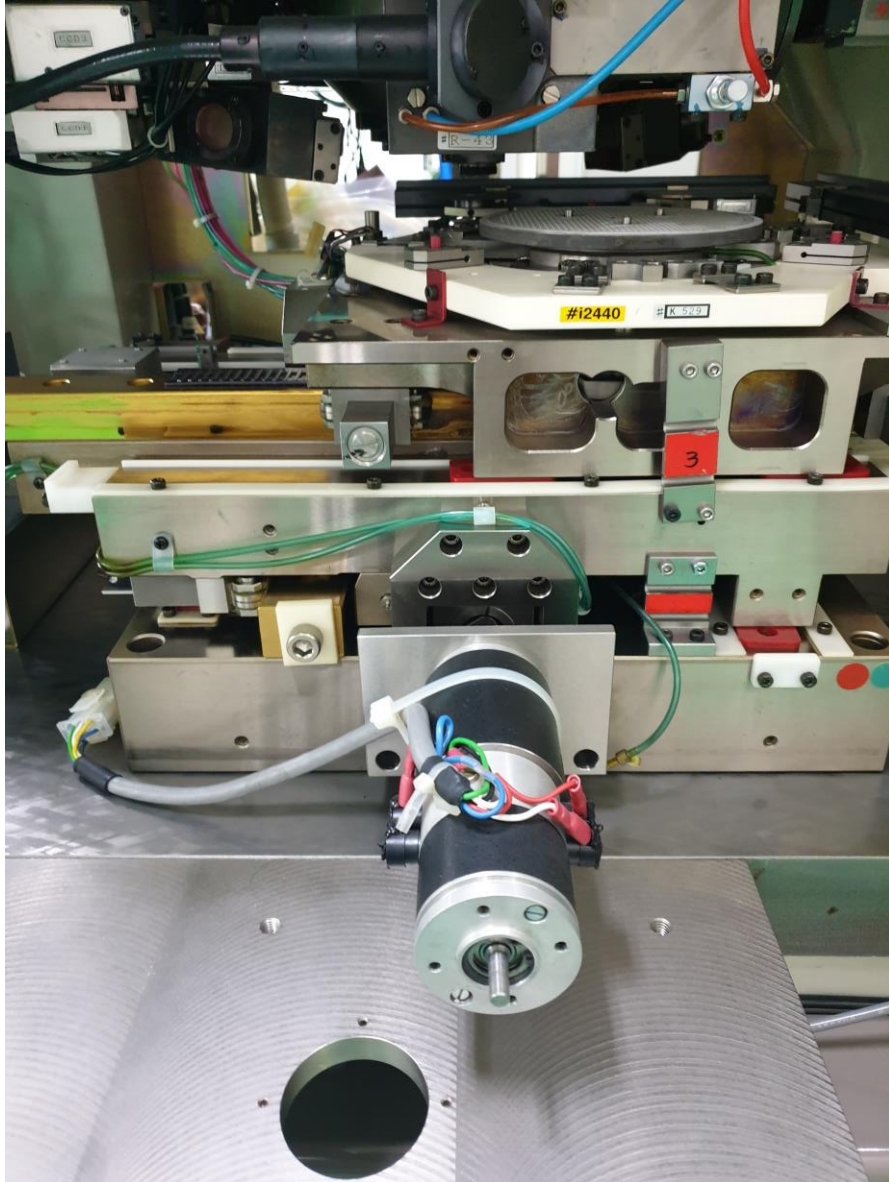
- Wafer size : 6inch
- Serial number :408605
- Vintage : 1994





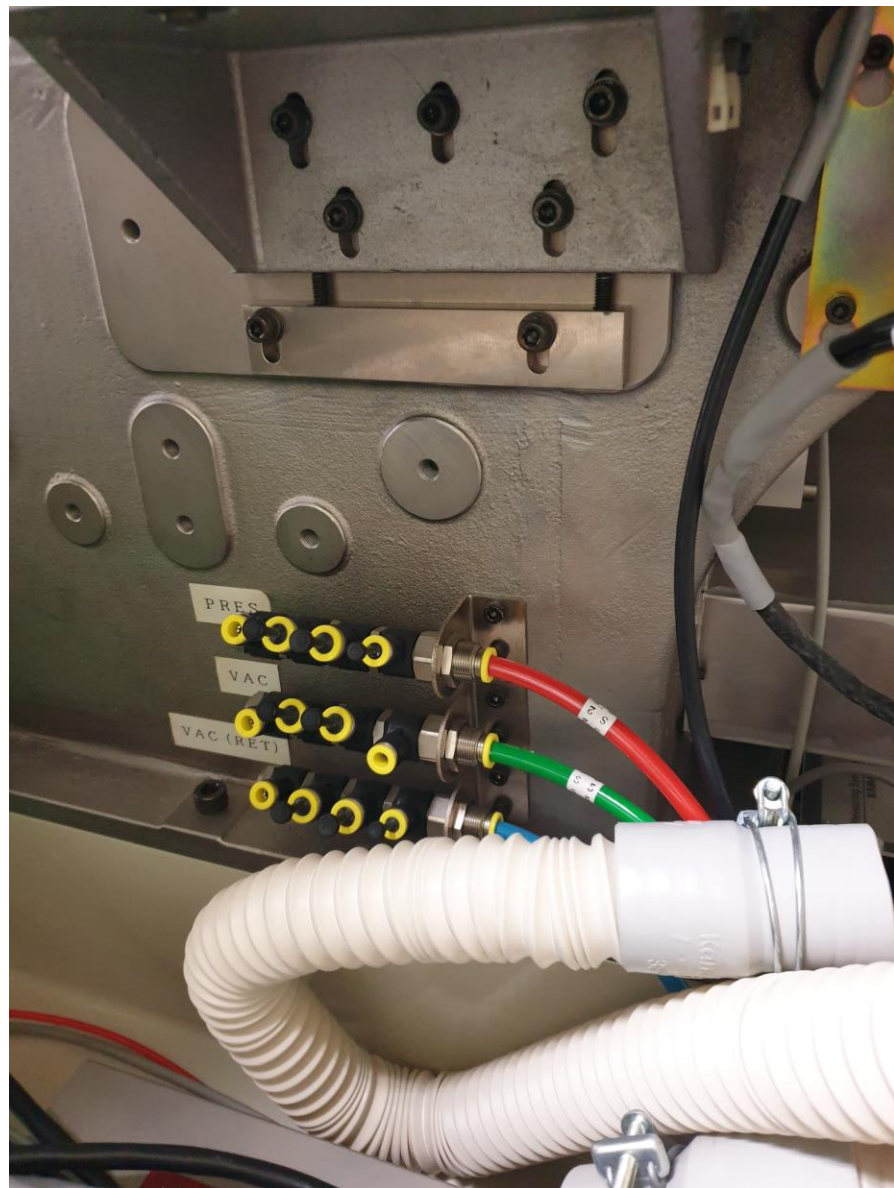
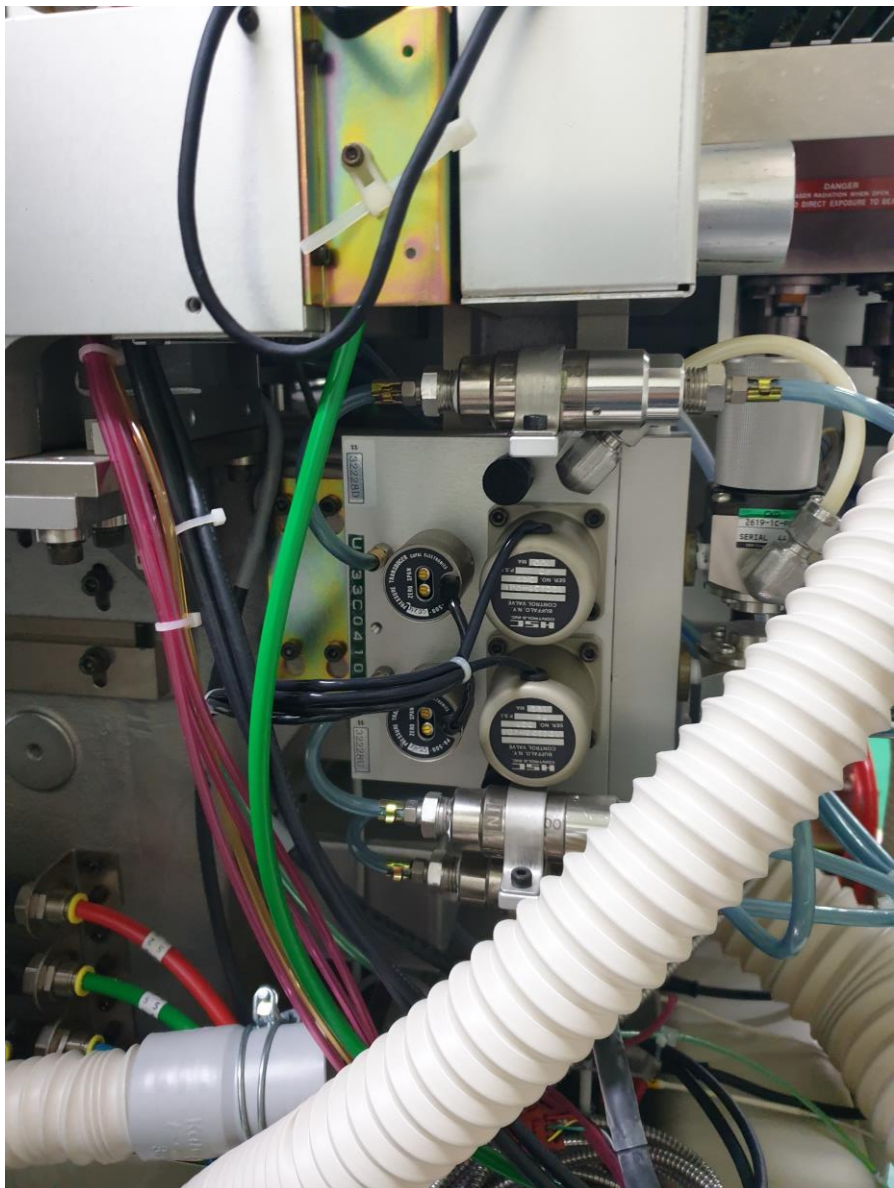


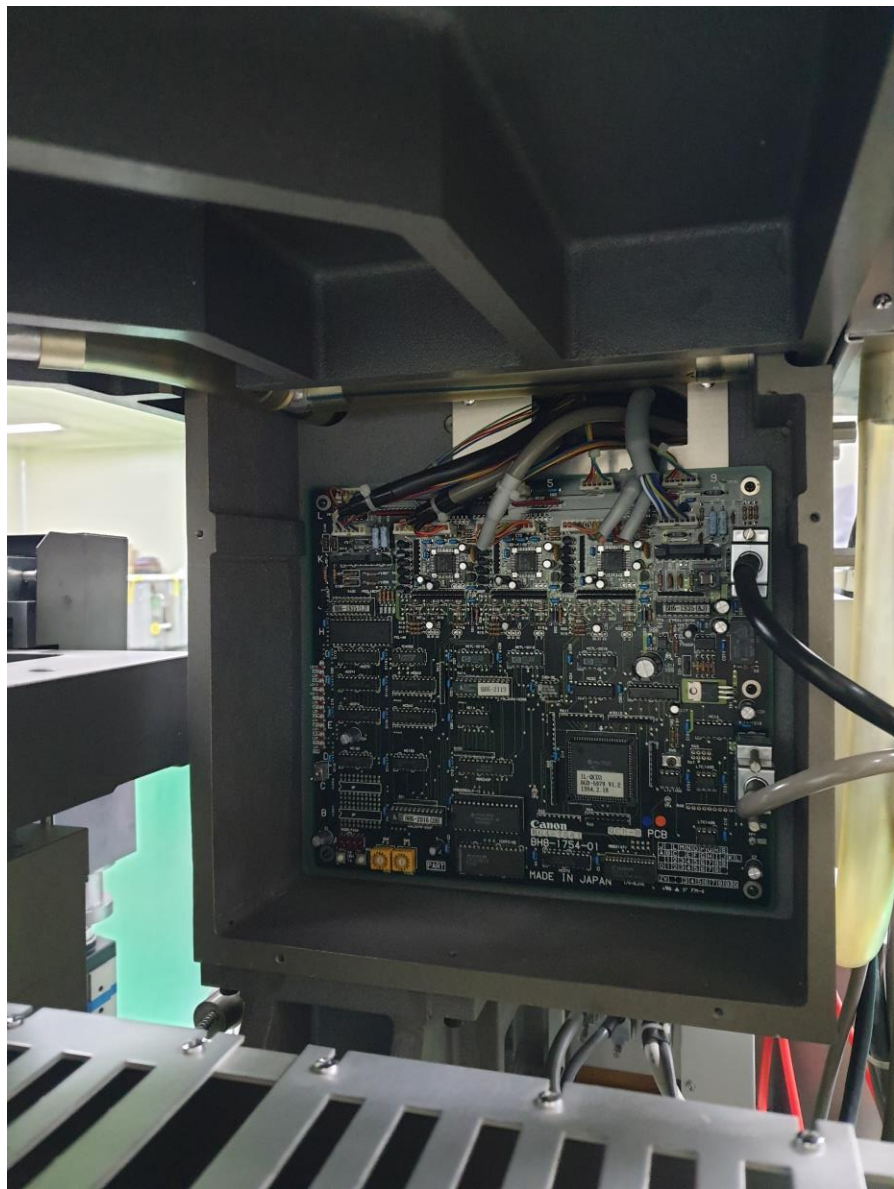
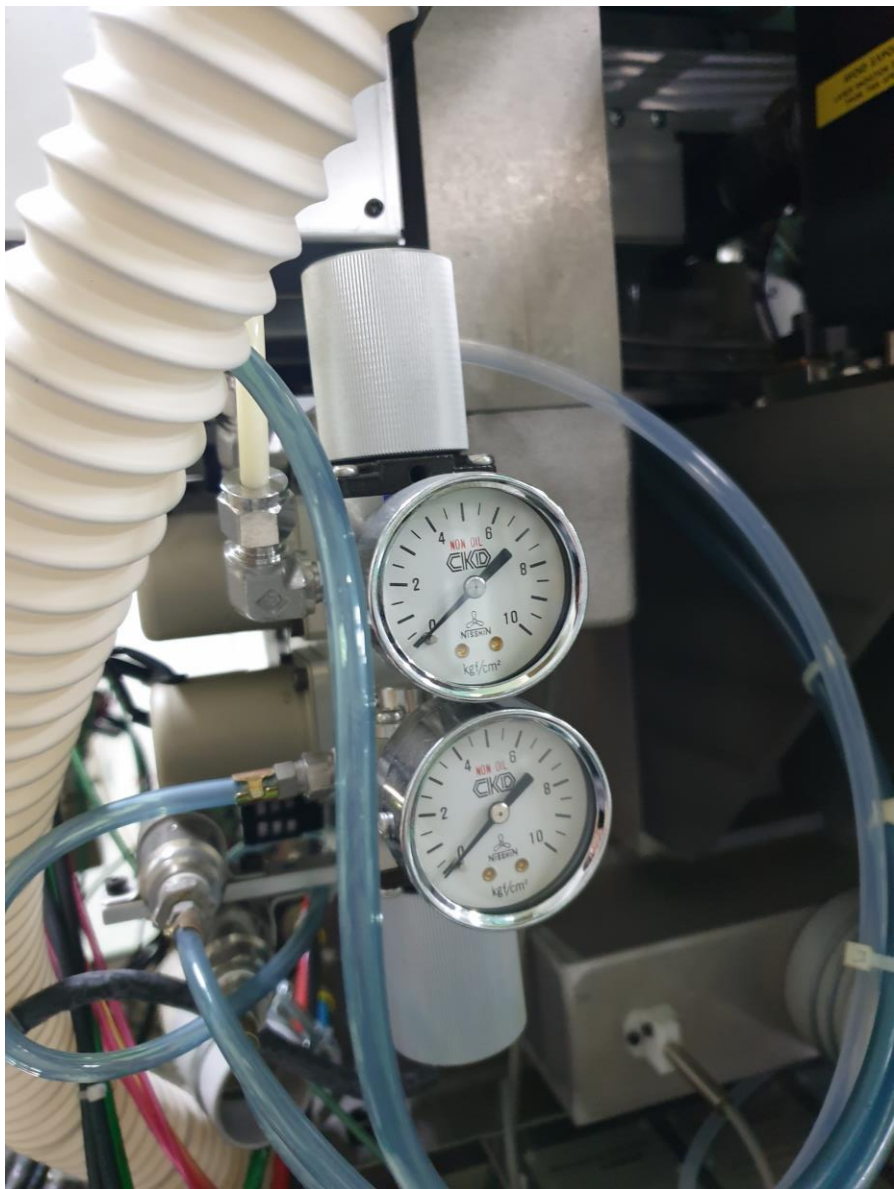




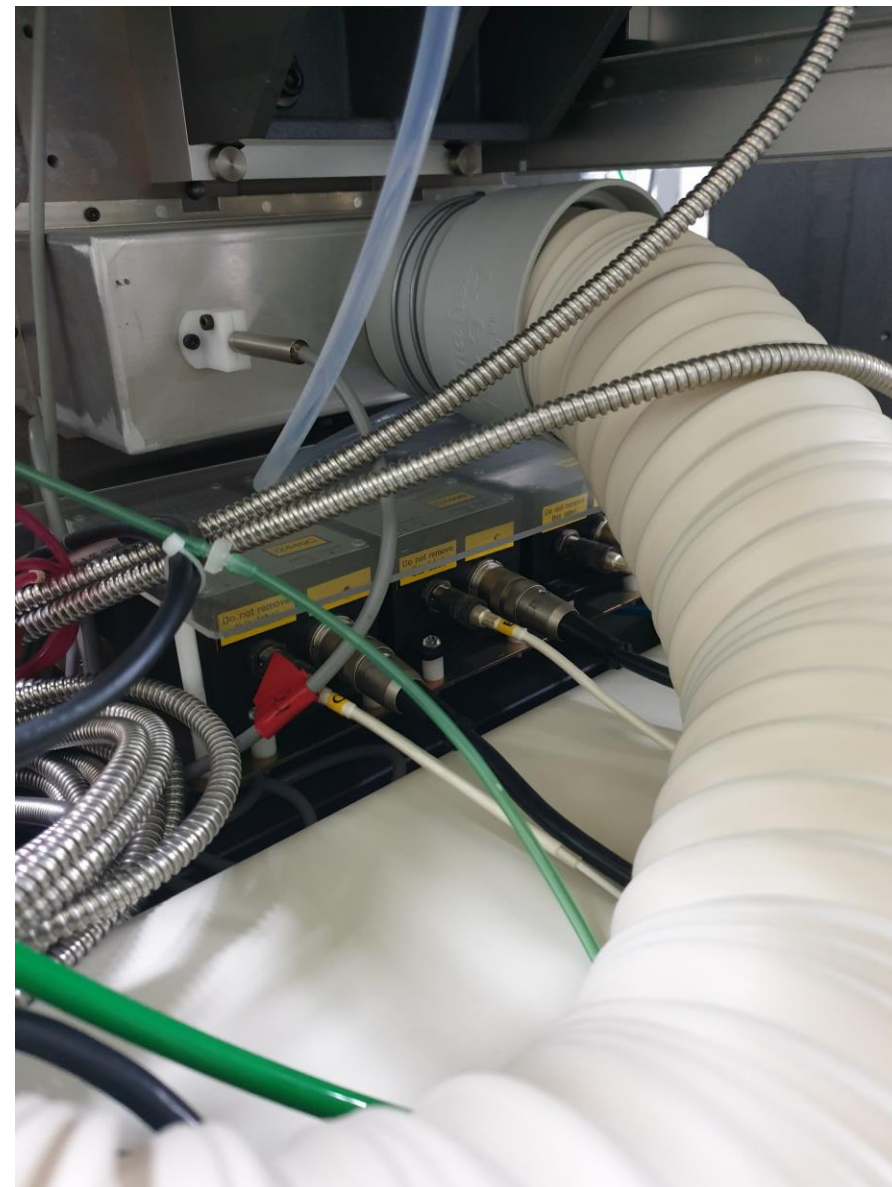
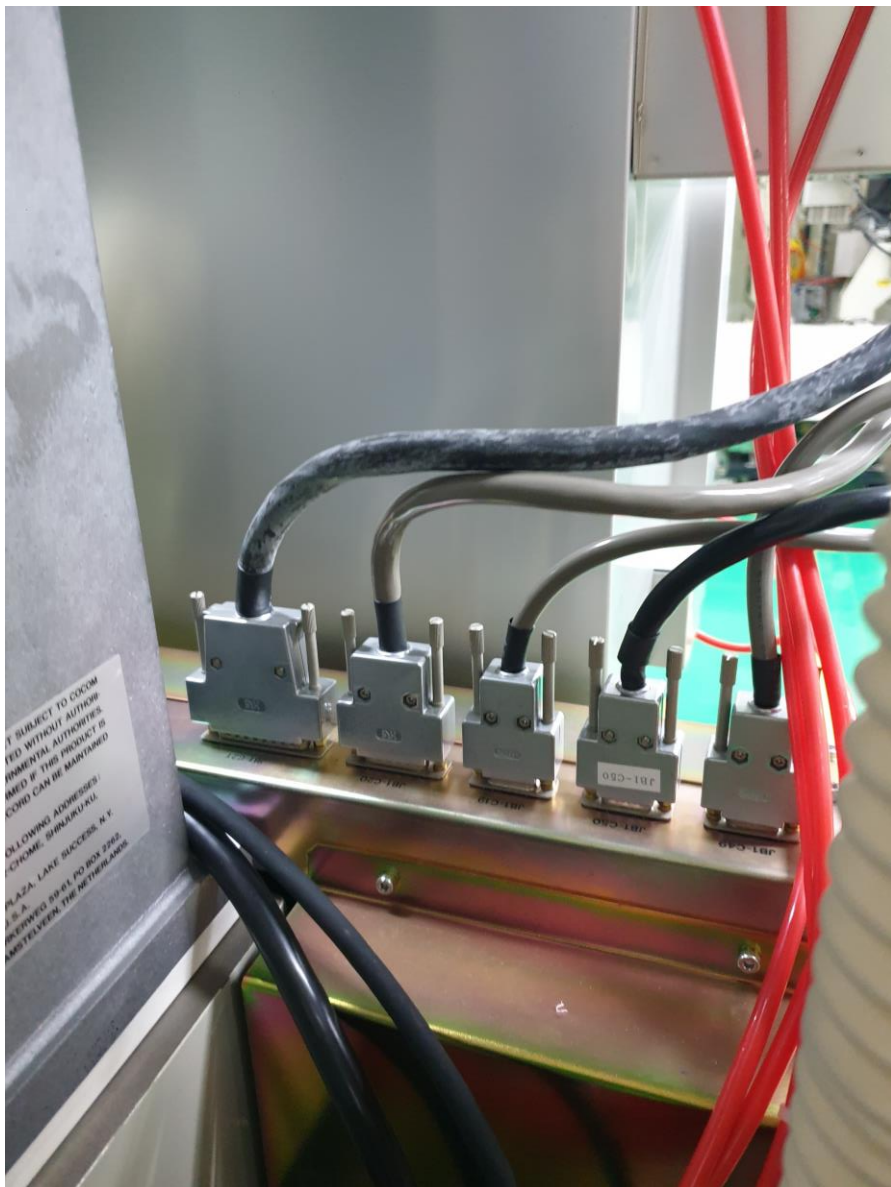


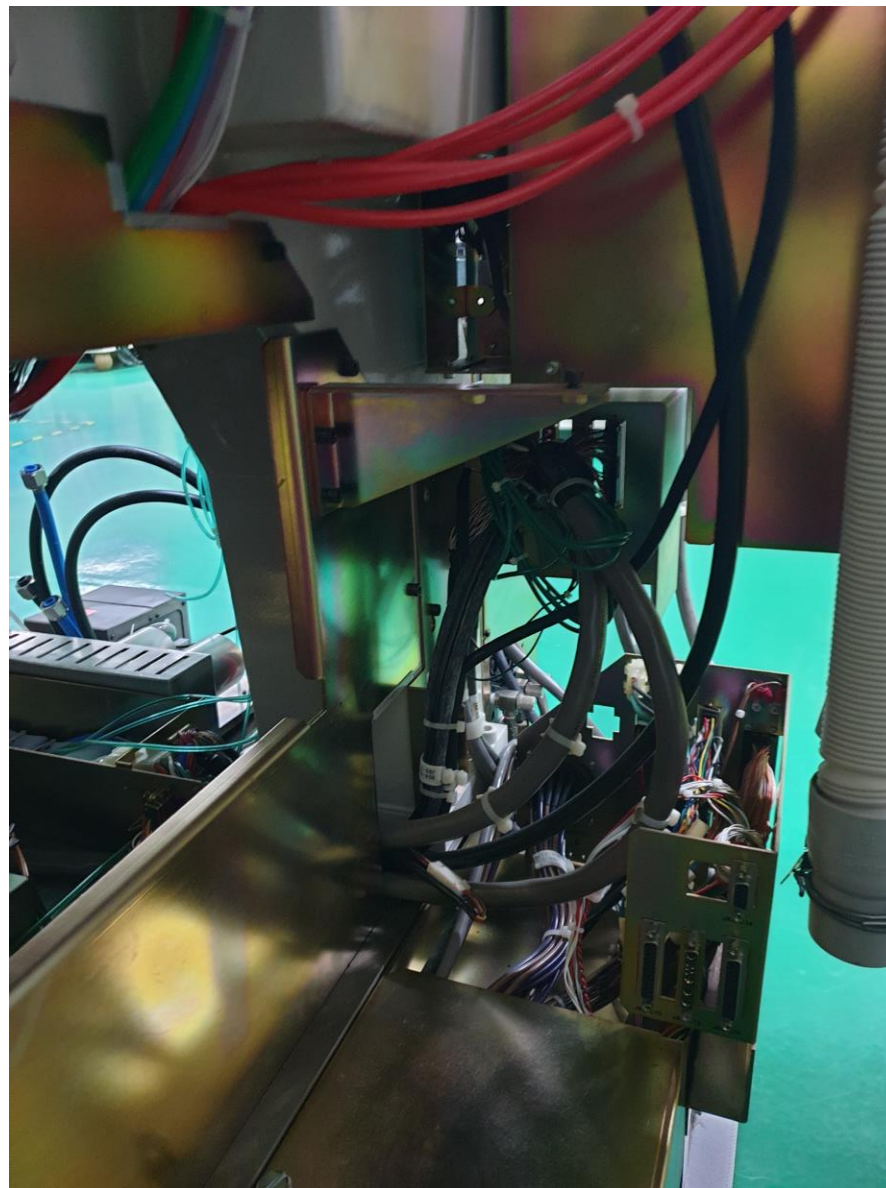


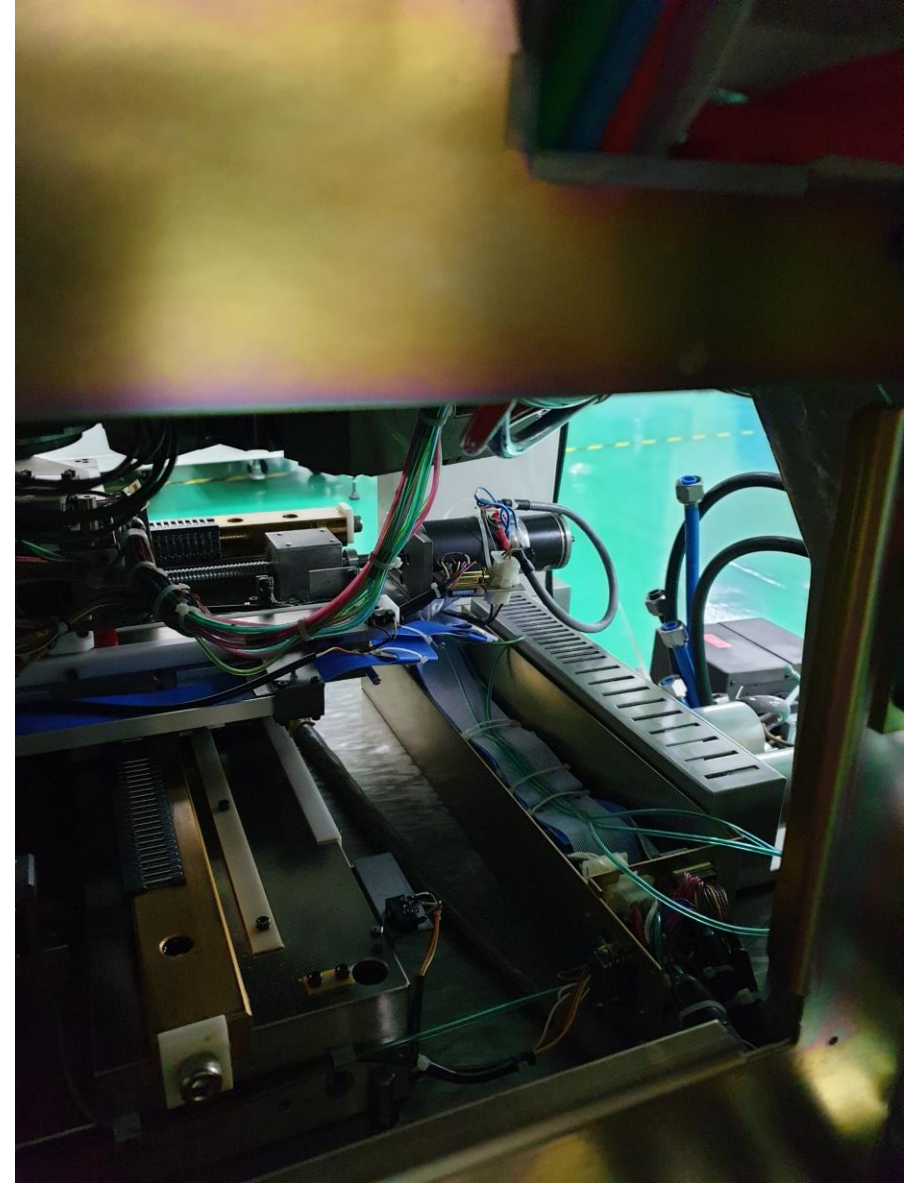
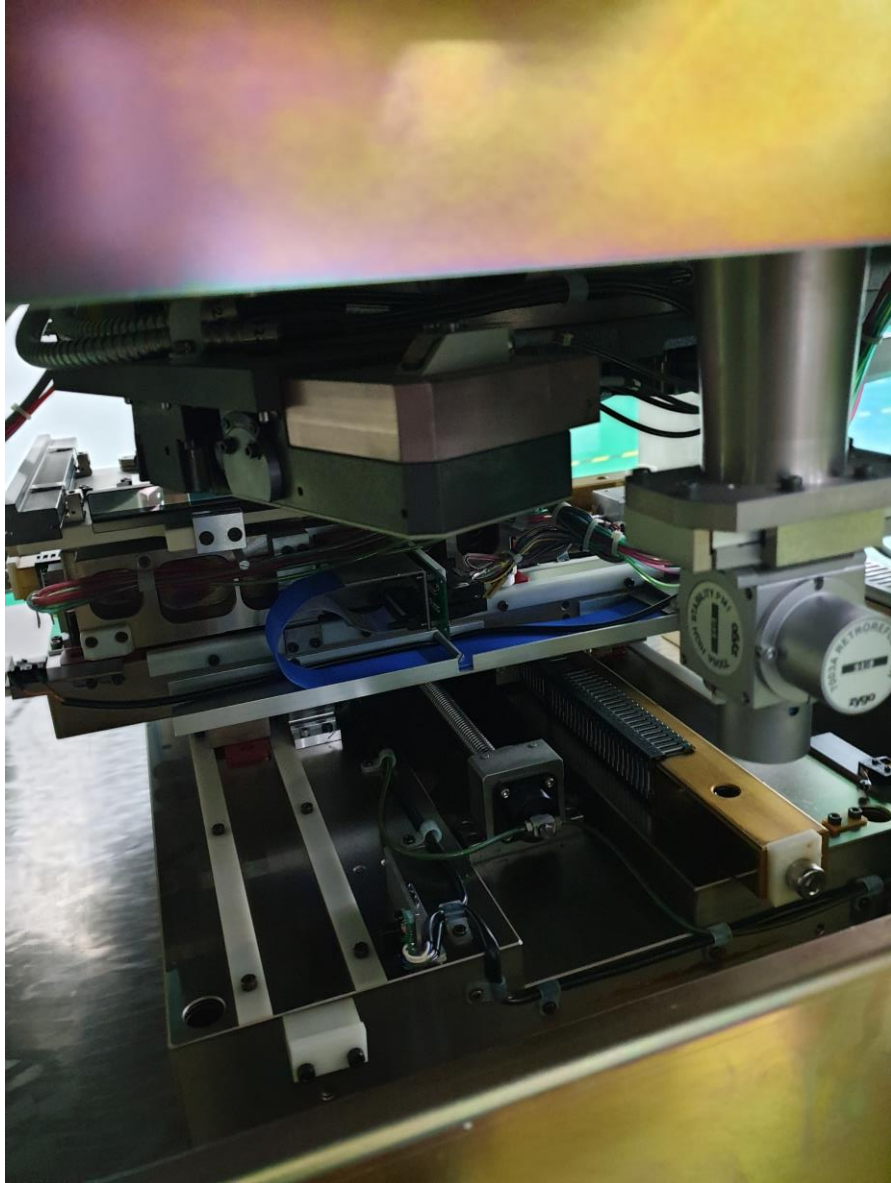


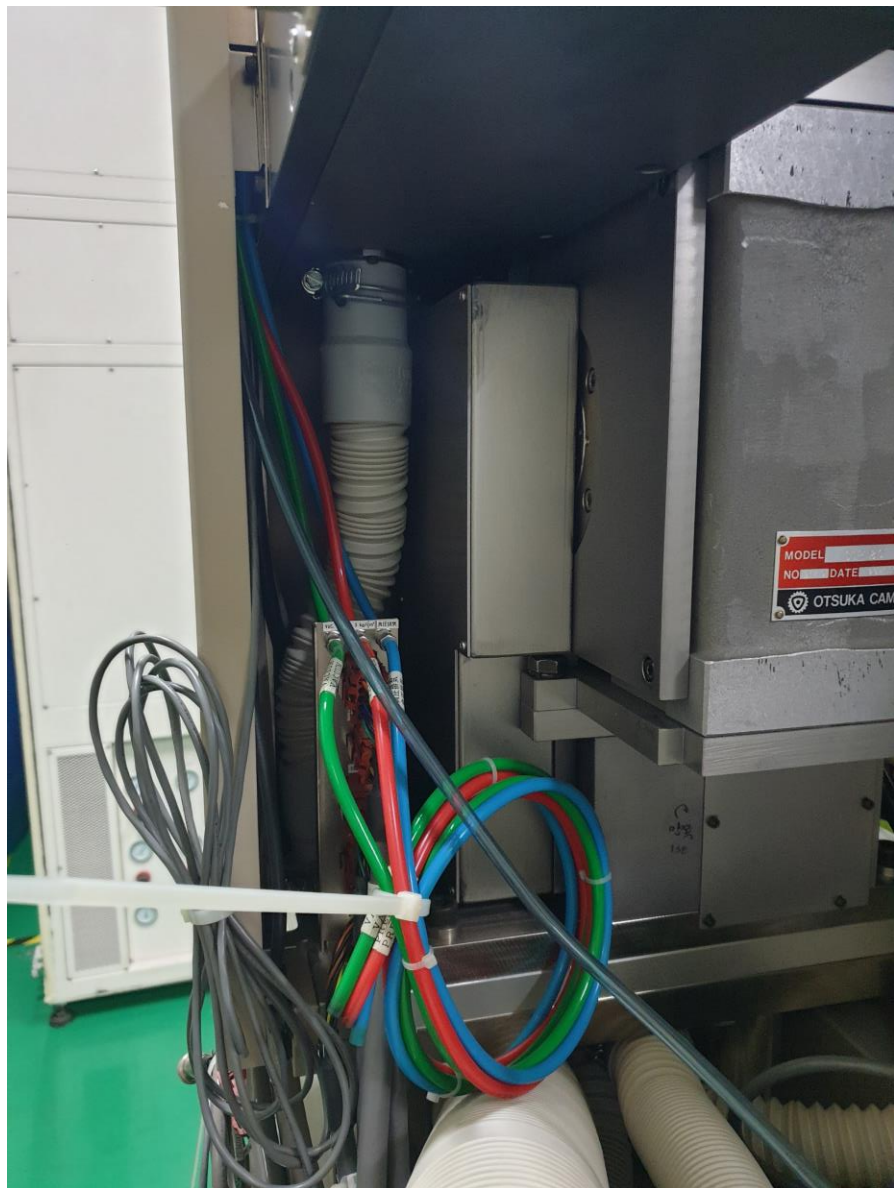
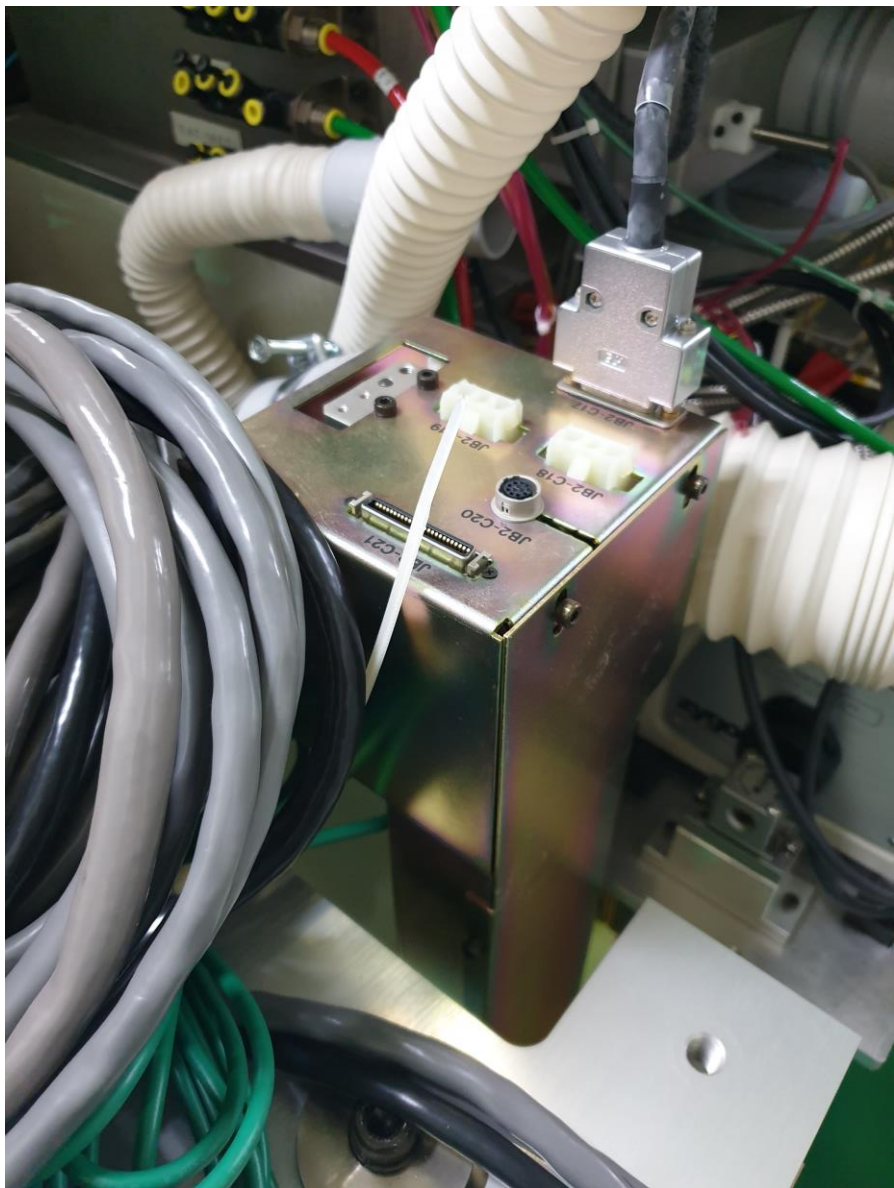




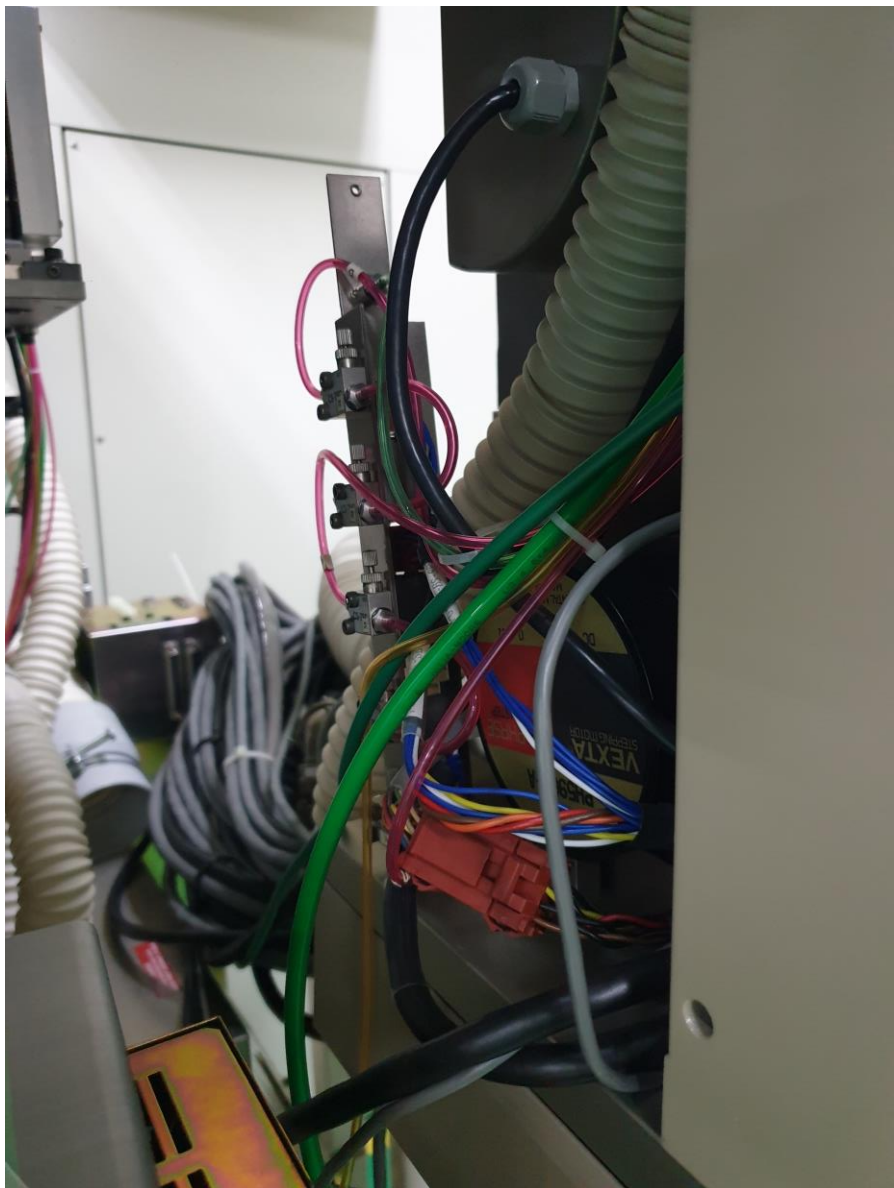


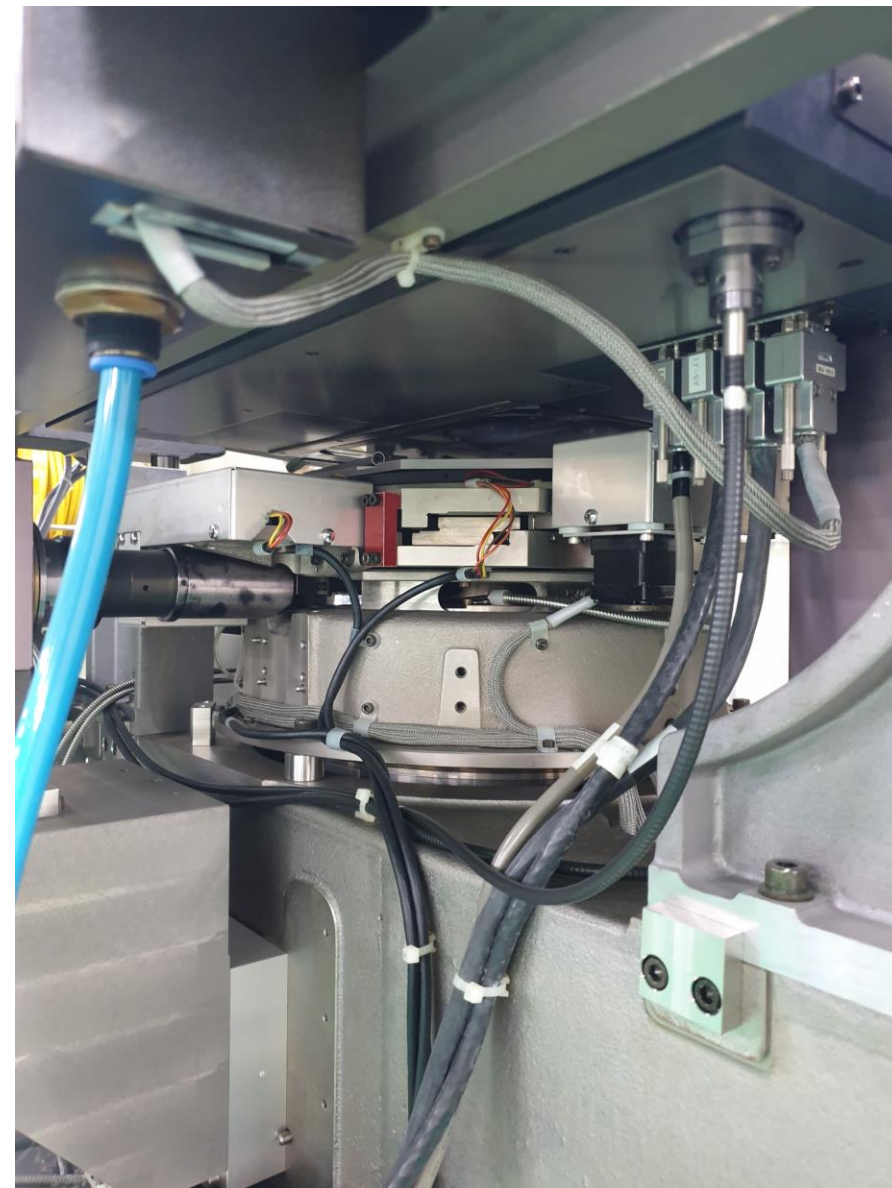
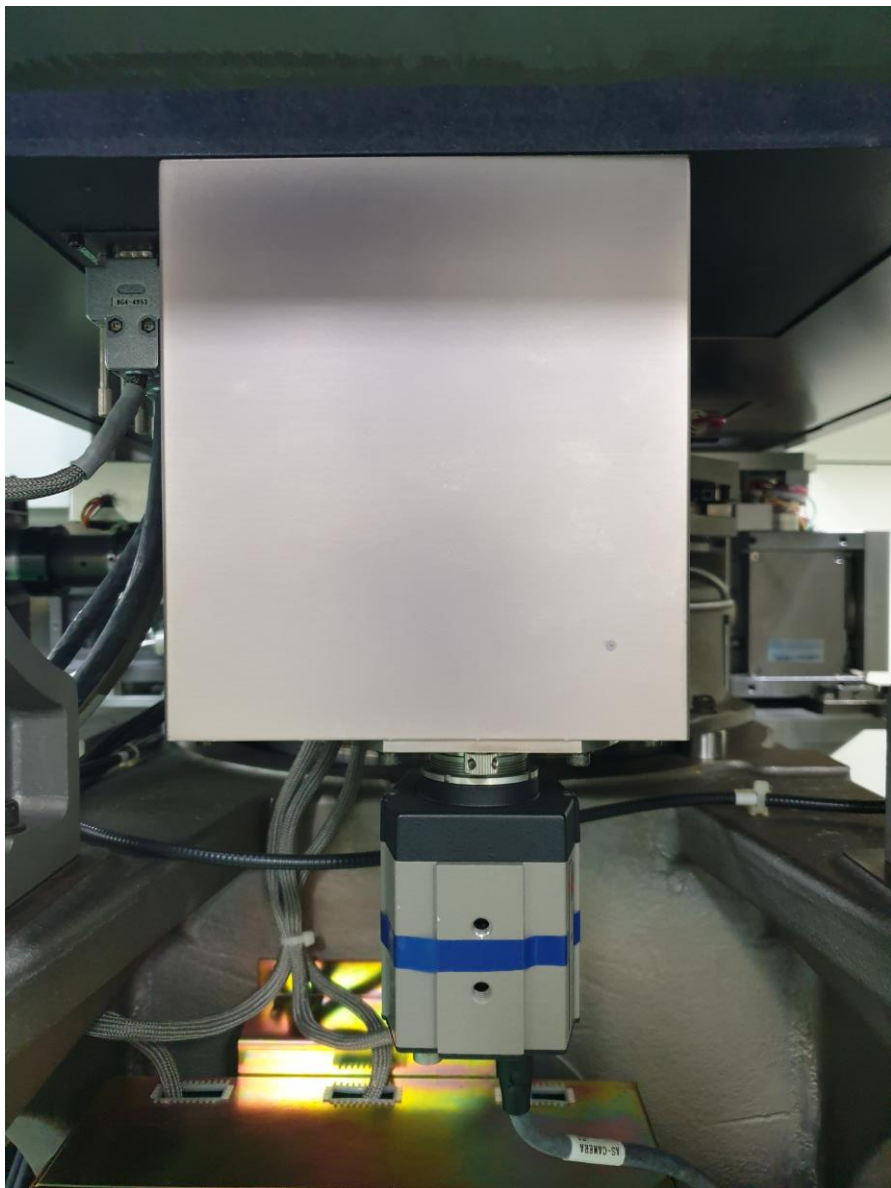




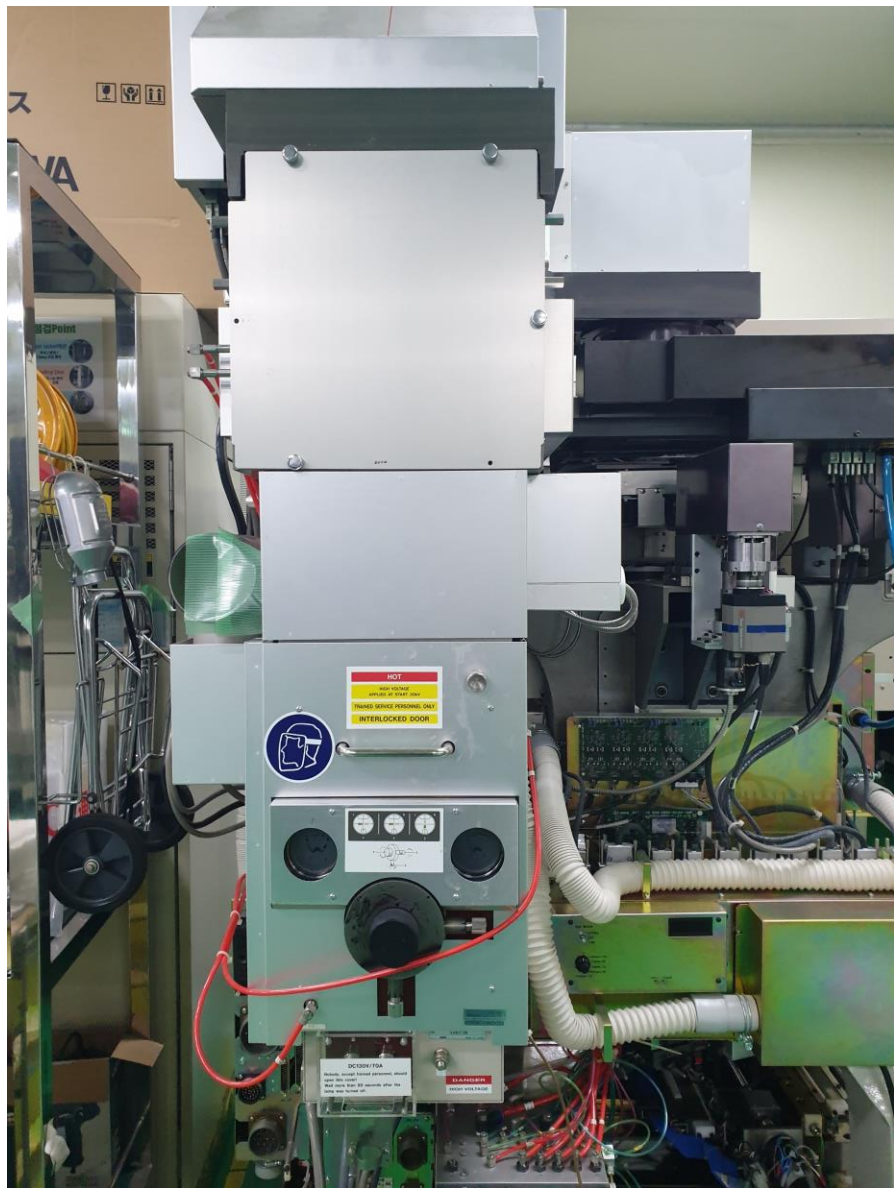
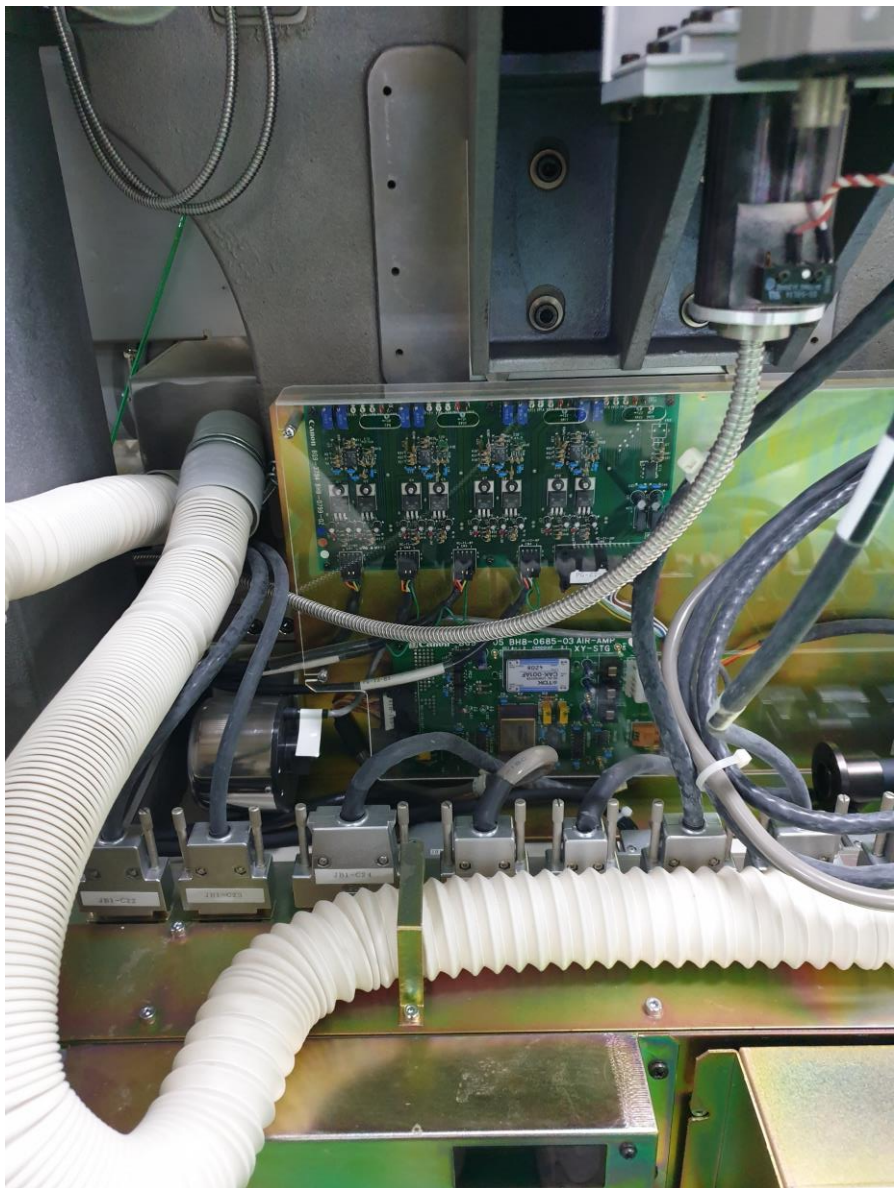


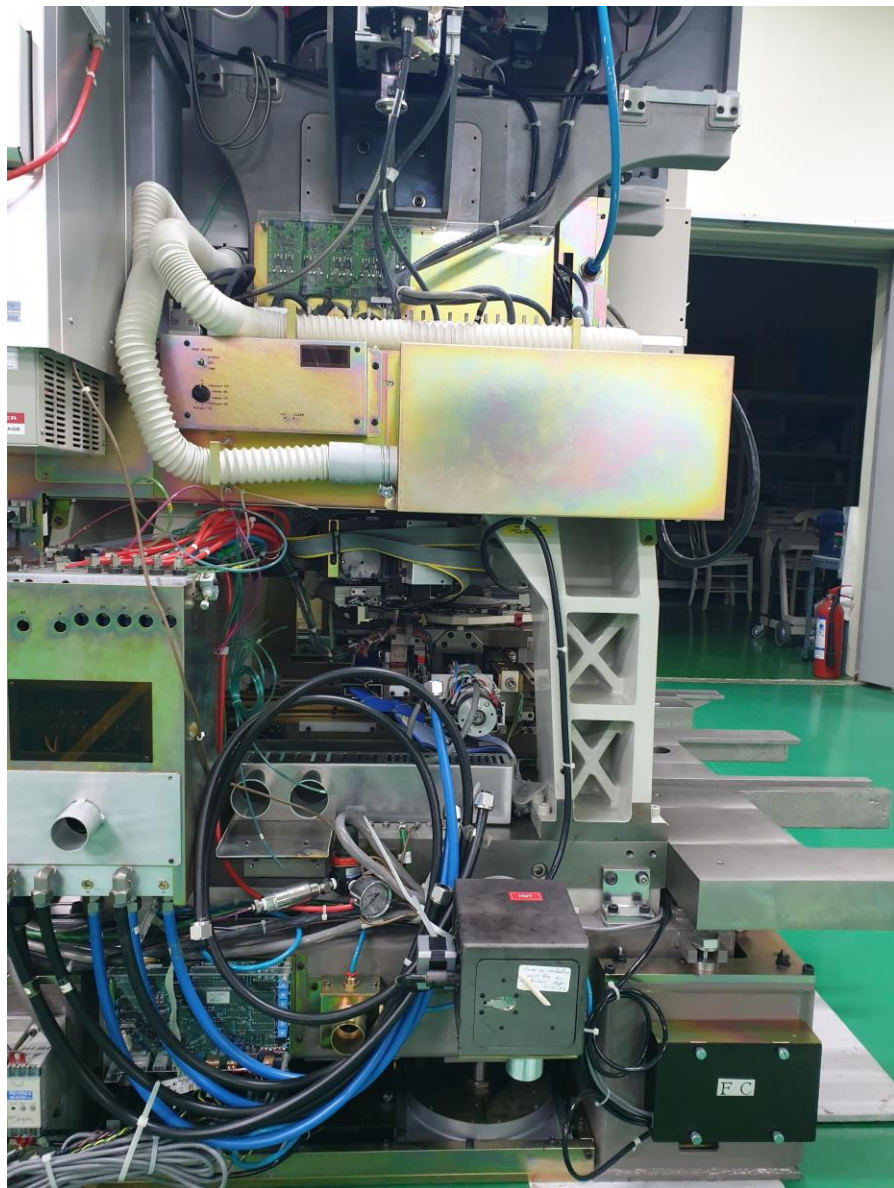
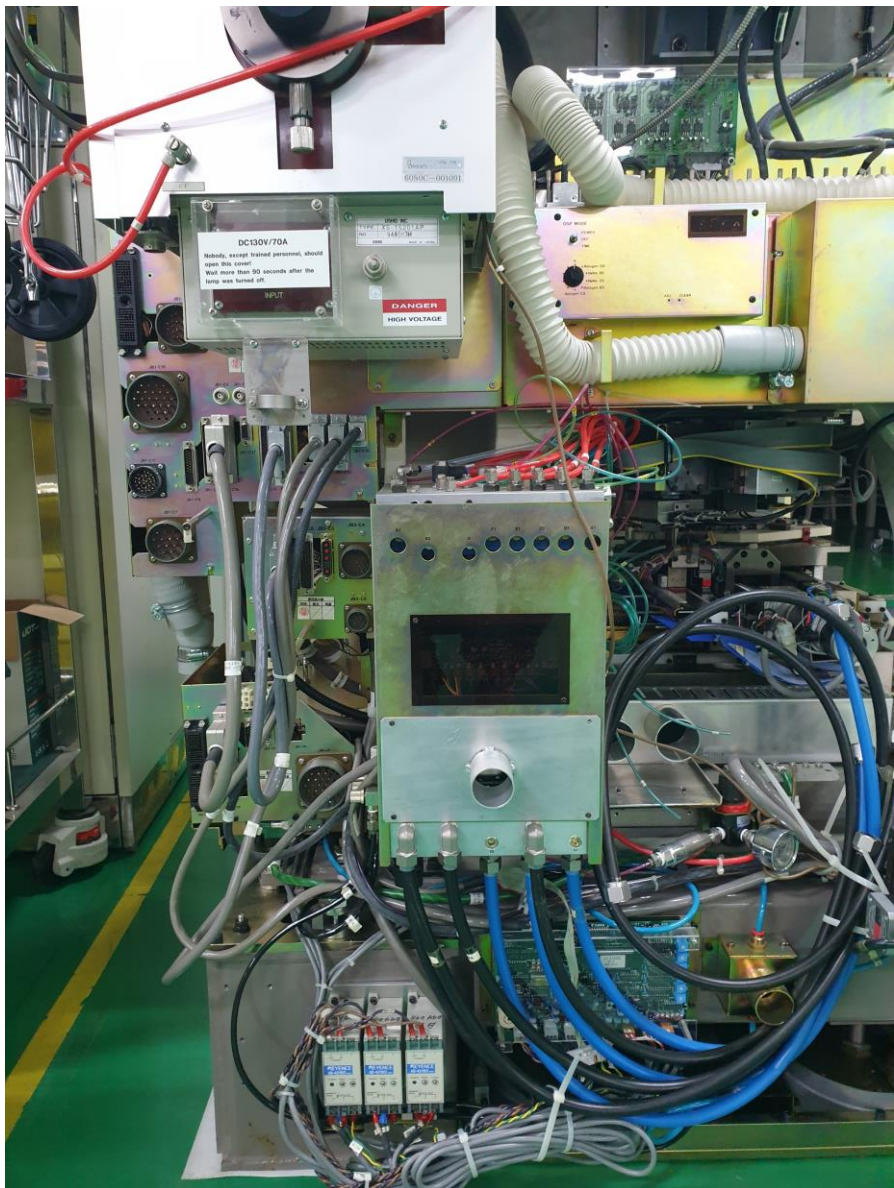




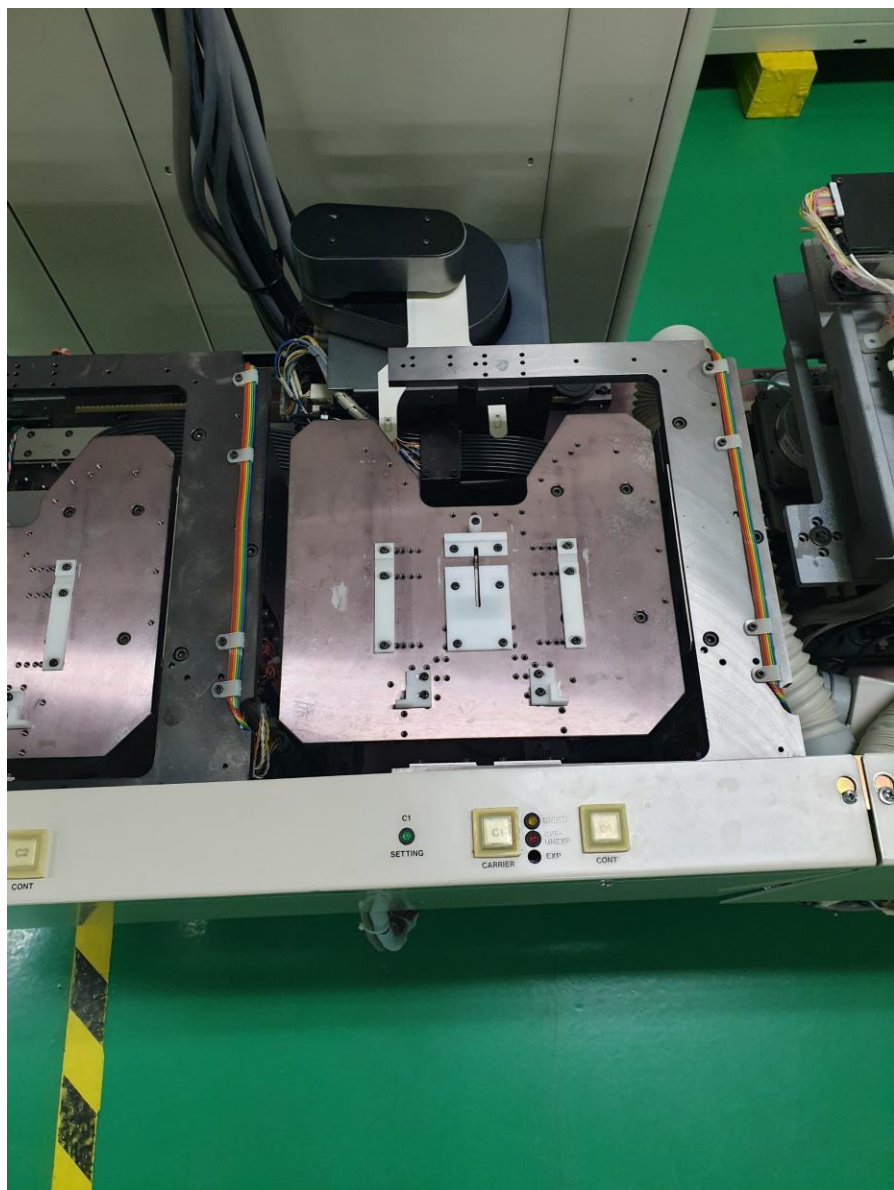
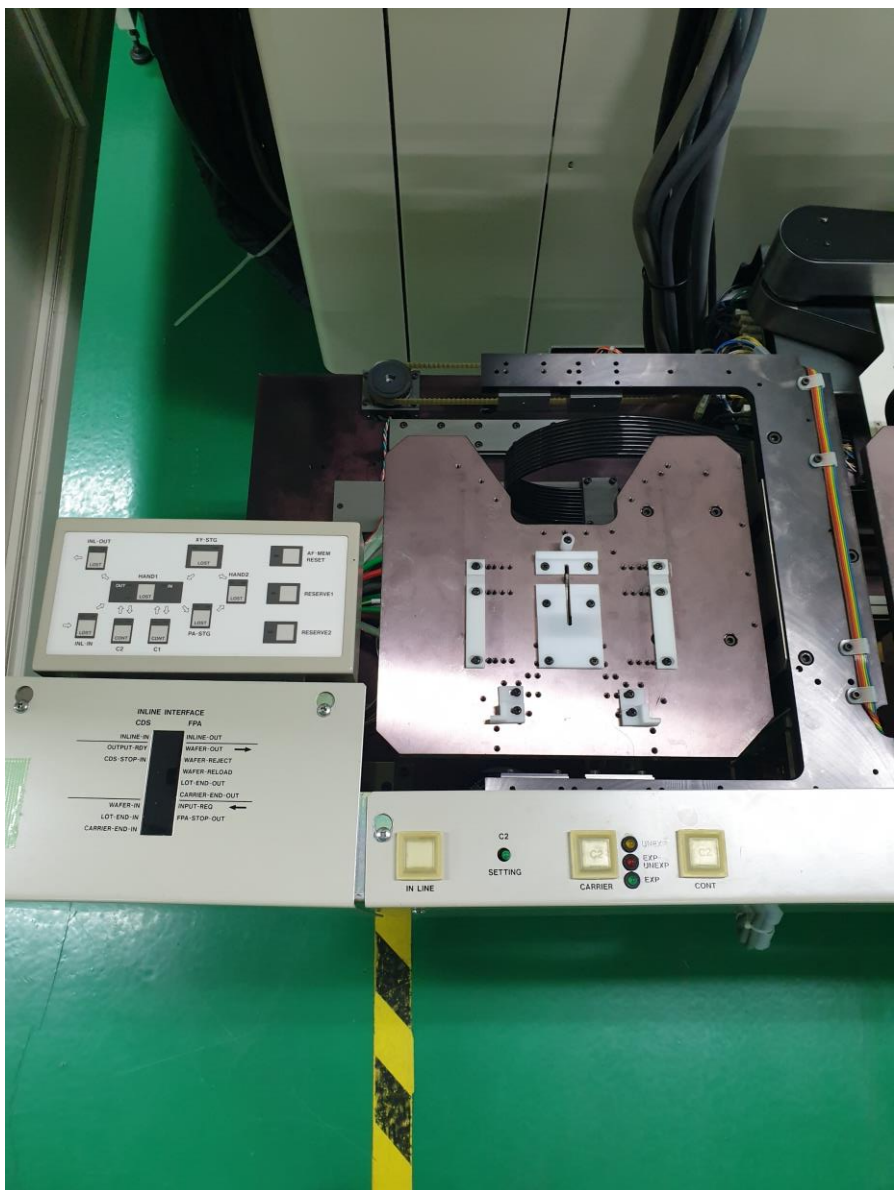


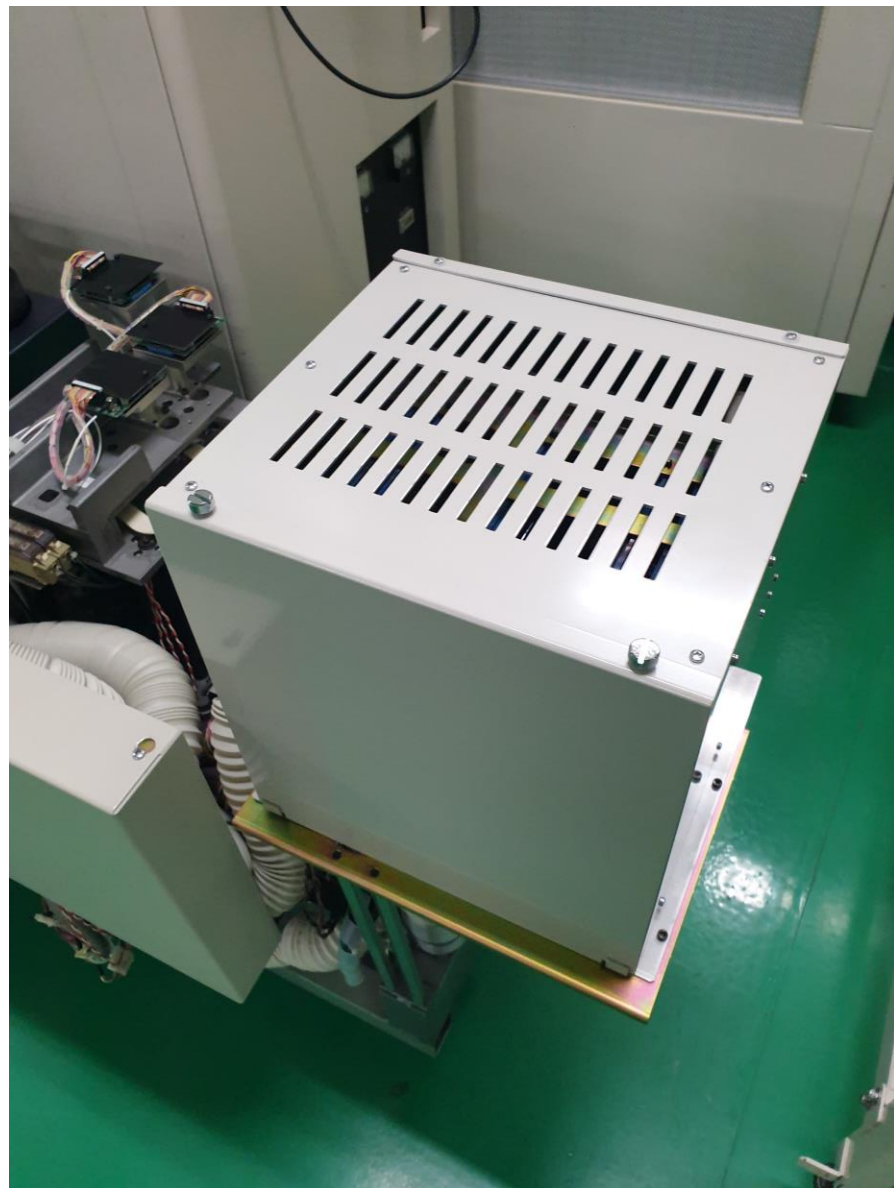
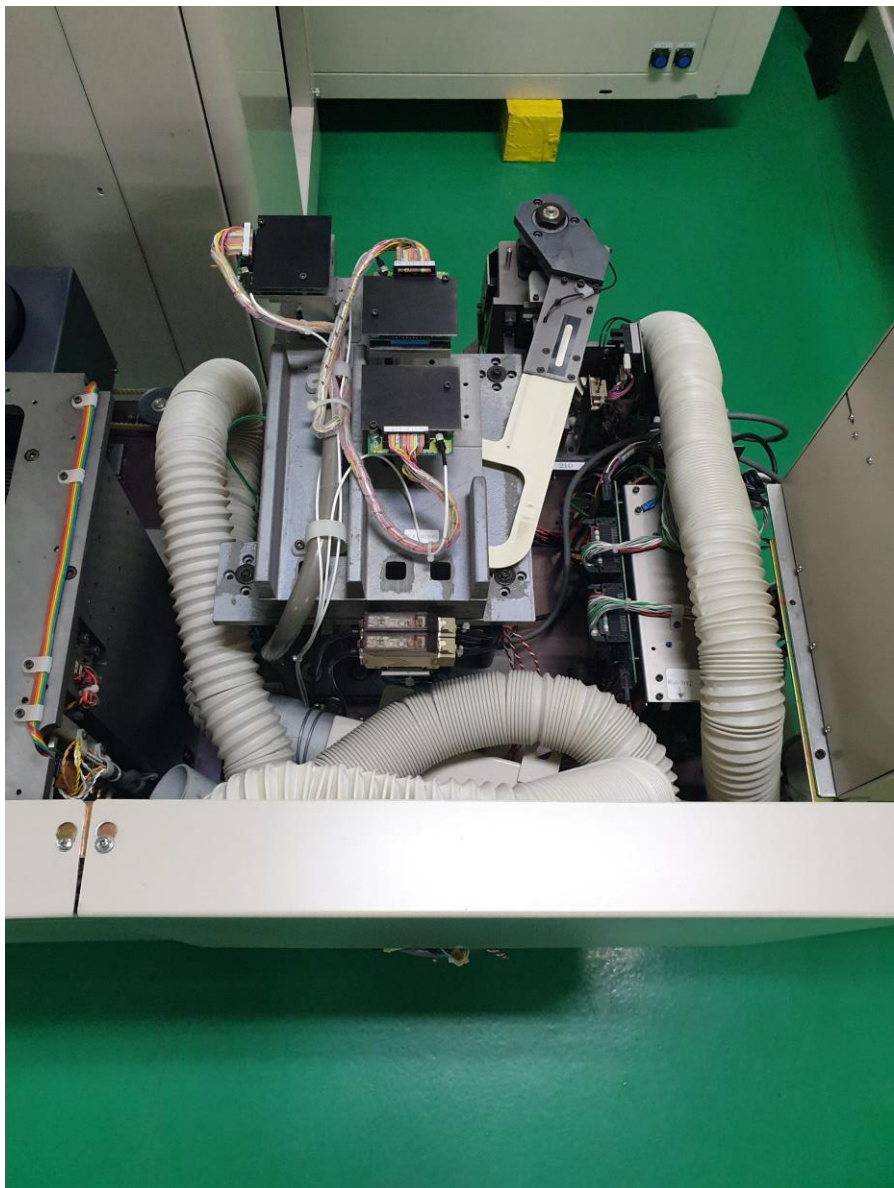


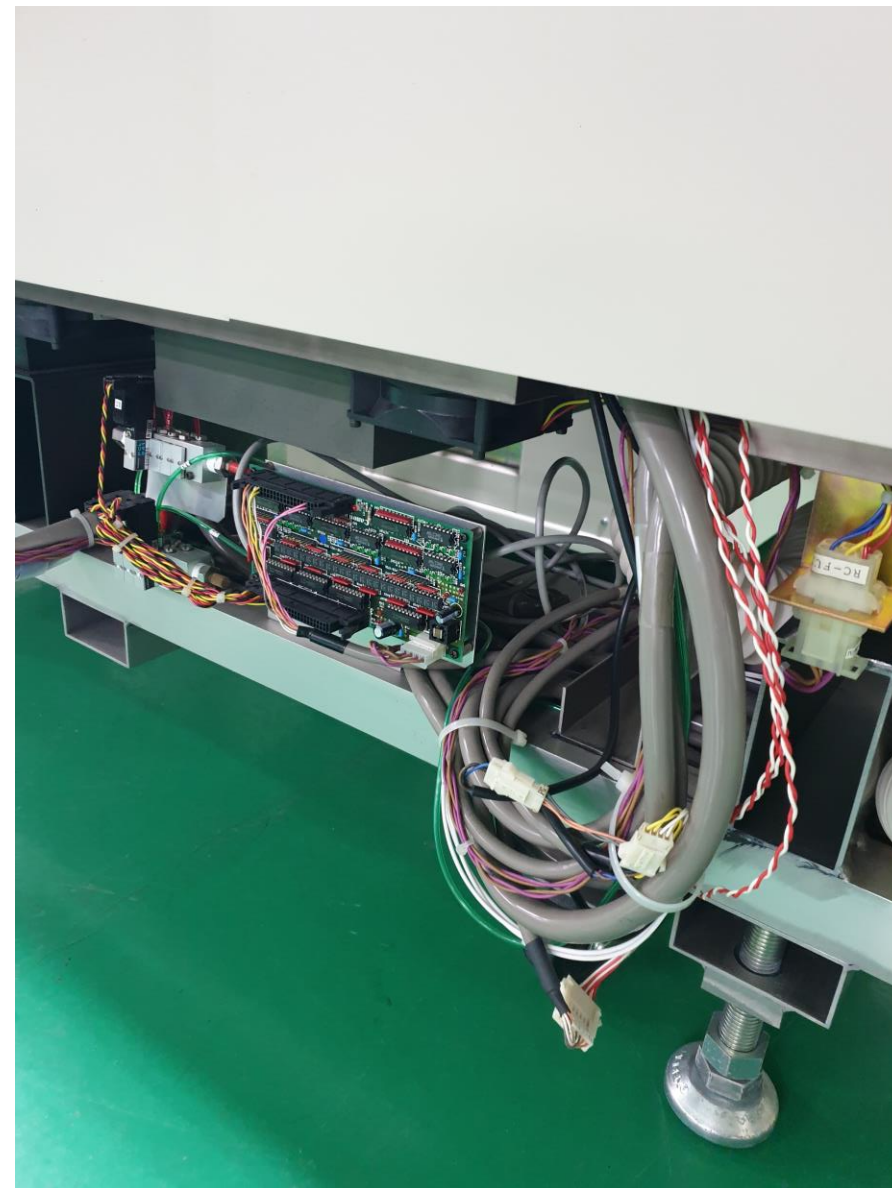
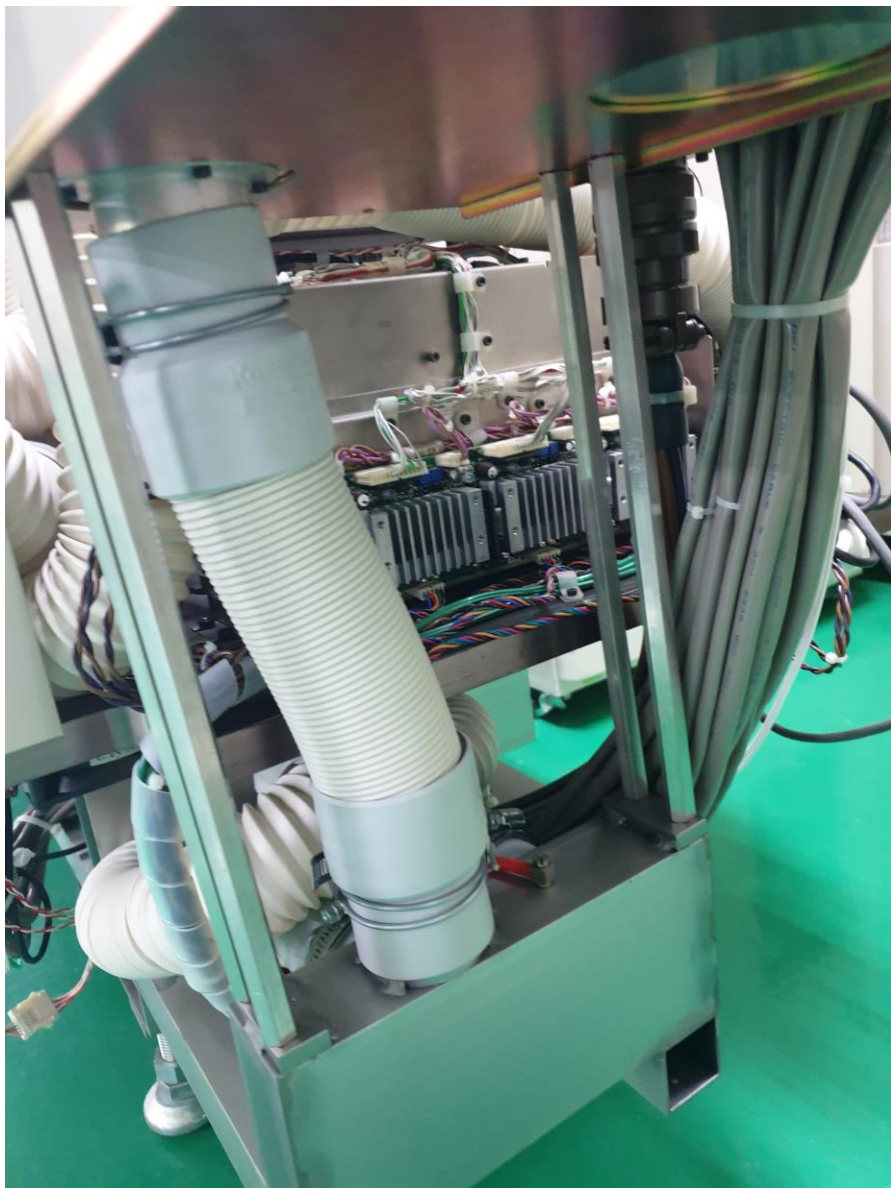


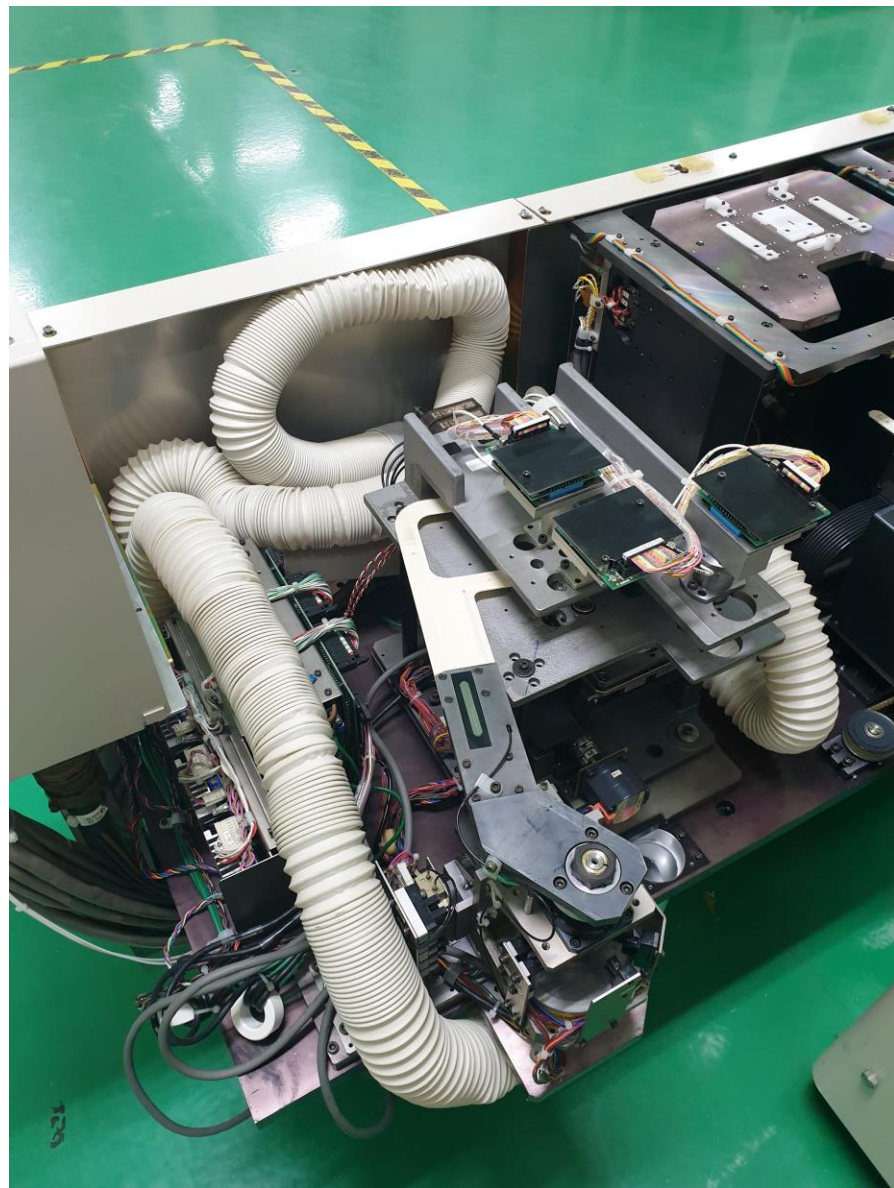






















Canon
FPA-2500 i3
Fine Pattern Aligner

NO. 408605

CANON INC. JAPAN

AVOID EXPOSURE
LASER RADIATION IS EMITTED
FROM THIS APERTURE.

CANON INC.
3-30-2 SHIMOMARUKO, OHTA-KU, TOKYO, JAPAN
CANON U.S.A., INC.
ONE CANON PLAZA, LAKE SUCCESS, N.Y. 11042, U.S.A.
MANUFACTURED: AUG. 1994
THIS PRODUCT CONFORMS WITH DHHS RADIATION PERFORMANCE STANDARD, 21CFR CHAPTER 1 SUBCHAPTER J.