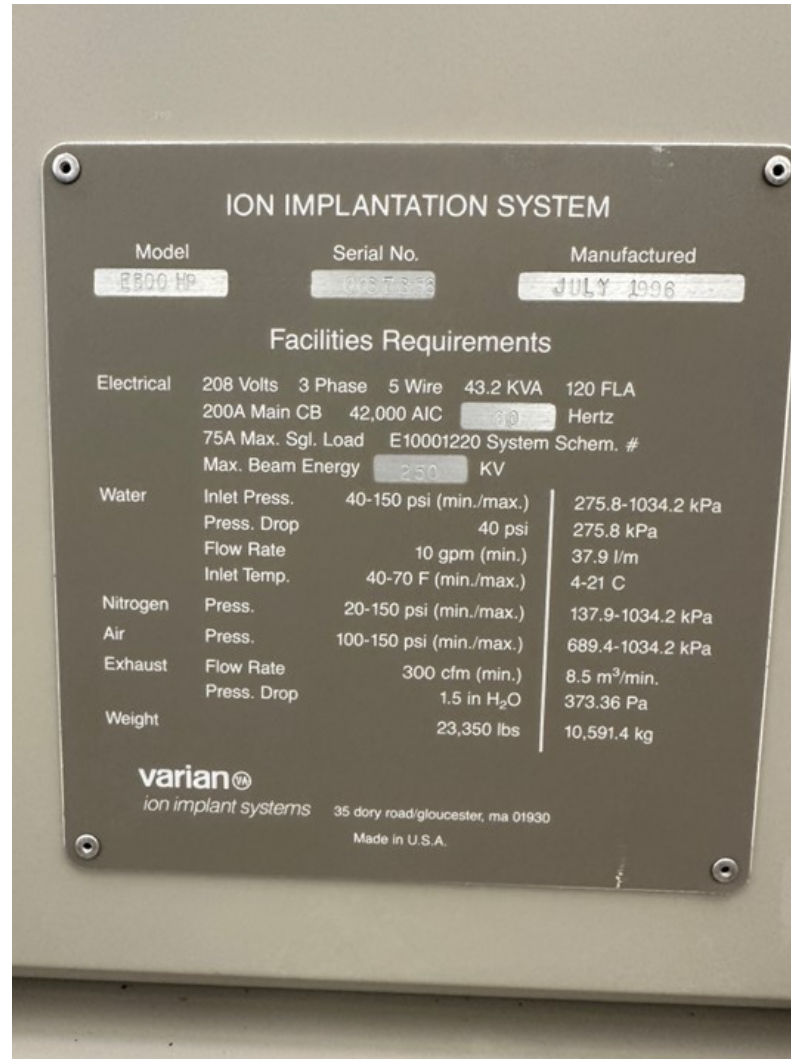


Varian E500 HP



Initial inspection of the machine was performed to confirm the tool was complete.

The tool was in good condition for its age.

There were a few small issues with some of the power cables for the internal lights. These were perished due to age.

Also, the terminal doors were sagging with age. This is common for these tools.



Picture showing
tool condition



Picture showing
tool condition (2)



Picture showing
tool condition (3)



Picture showing
tool condition (4)

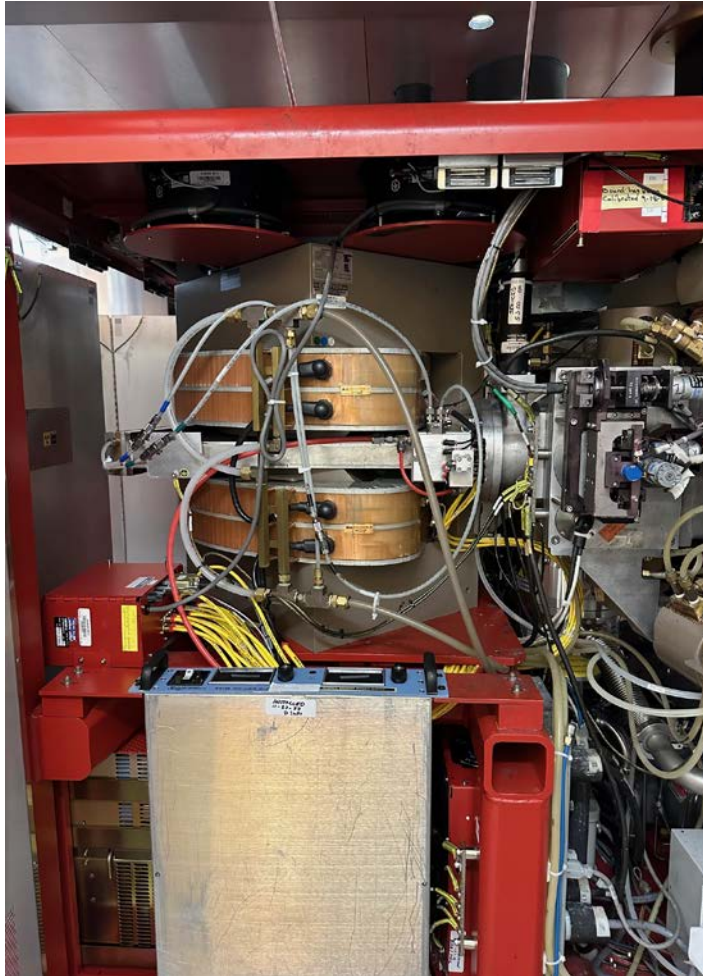


Picture showing
tool condition (5)



Picture showing
tool condition (6)





Picture showing tool condition (7)



We then started the disassembly by removing all the fans, cabling and raceway power sockets from the roof.

We continued by removing the operators monitor and computer and all associated cabling.



We then started the disassembly by removing all the fans, cabling and raceway power sockets from the roof.

We continued by removing the operators monitor and computer and all associated cabling (2)



We then started the disassembly by removing all the fans, cabling and raceway power sockets from the roof.

We continued by removing the operators monitor and computer and all associated cabling (3)



Enclosure internal lead shielding and grounding drop bars were removed



Enclosure internal lead shielding and grounding drop bars were removed (2)



Smaller items were placed into plastic tote boxes



Smaller items were placed into plastic tote boxes (2)

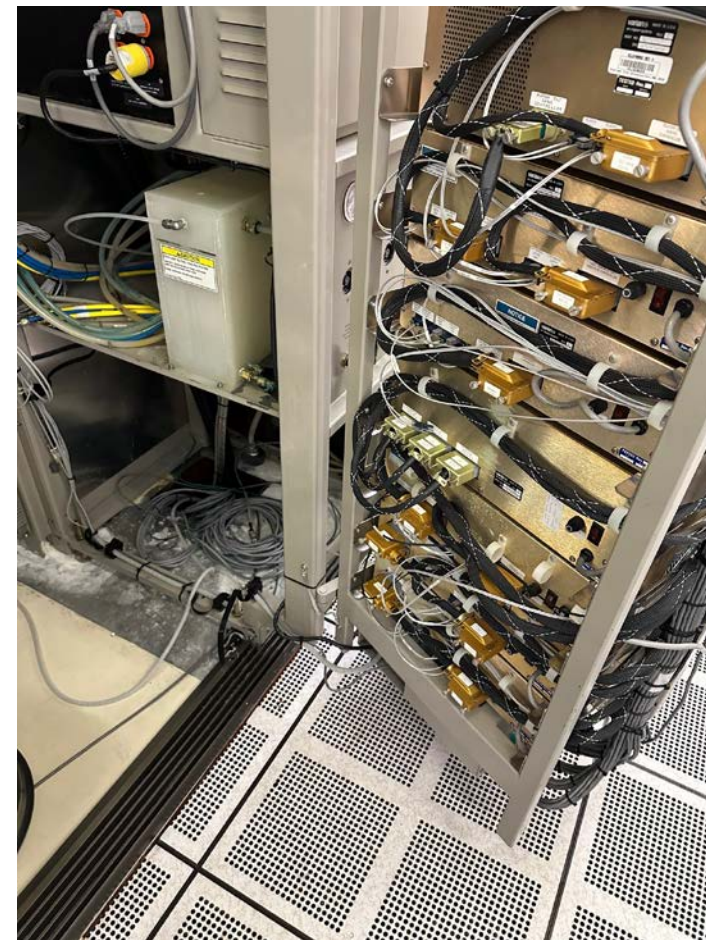


All internal disconnects were removed to separate the end station to the facilities module and neatly cable tied for transit.





All internal disconnects were removed to separate the end station to the facilities module and neatly cable tied for transit. (2)





All internal disconnects were removed to separate the end station to the facilities module and neatly cable tied for transit. (3)



With the help from the riggers, we removed the enclosure doors, roof panels, roof truss sections and enclosure corner sections



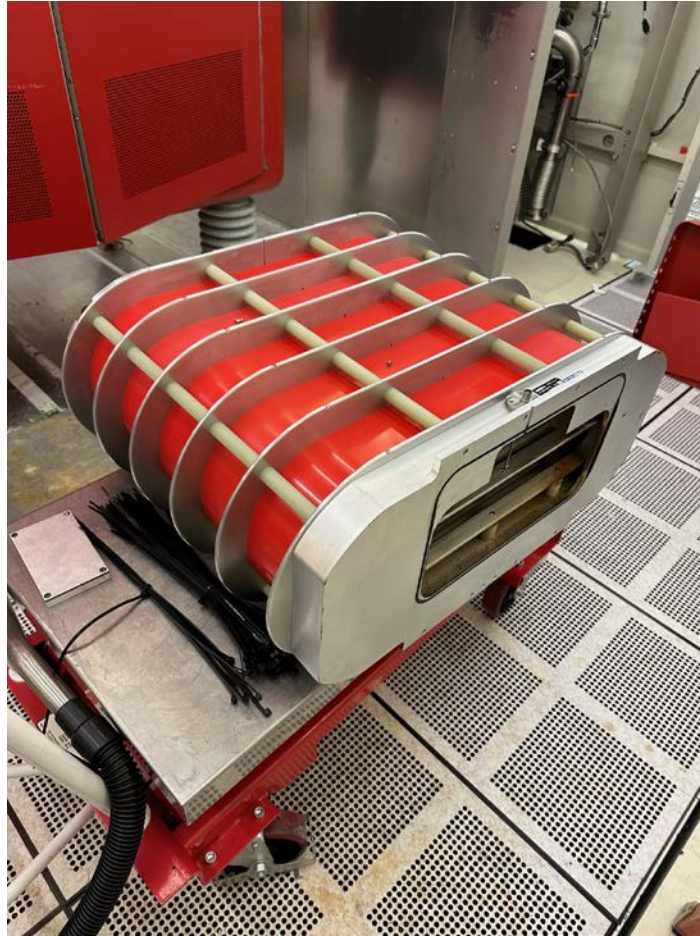


With the help from the riggers, we removed the enclosure doors, roof panels, roof truss sections and enclosure corner sections. (2)



Accel column was then prepped for removal

Using a hydraulic lifting table, we then continued to remove the Accel column.

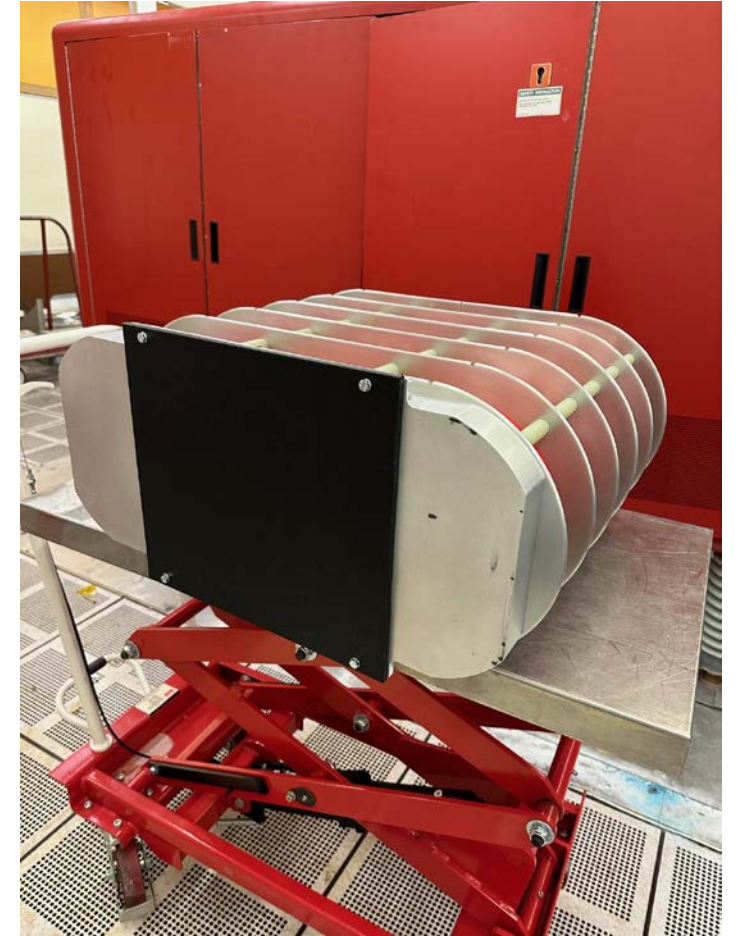


Blanking covers were then used to cover and protect all the vacuum sealing surfaces.





Blanking covers were then used to cover and protect all the vacuum sealing surfaces. (2)





Blanking covers were then used to cover and protect all the vacuum sealing surfaces. (3)



Internal lead wall was removed and placed onto a plastic pallet supplied by the rigging company.



Terminal was then inspected, and any loose items were secured for transit.



Terminal was then inspected, and any loose items were secured for transit. (2)





Terminal was then inspected, and any loose items were secured for transit. (3)





Alternator shaft removed from the terminal and facilities rack





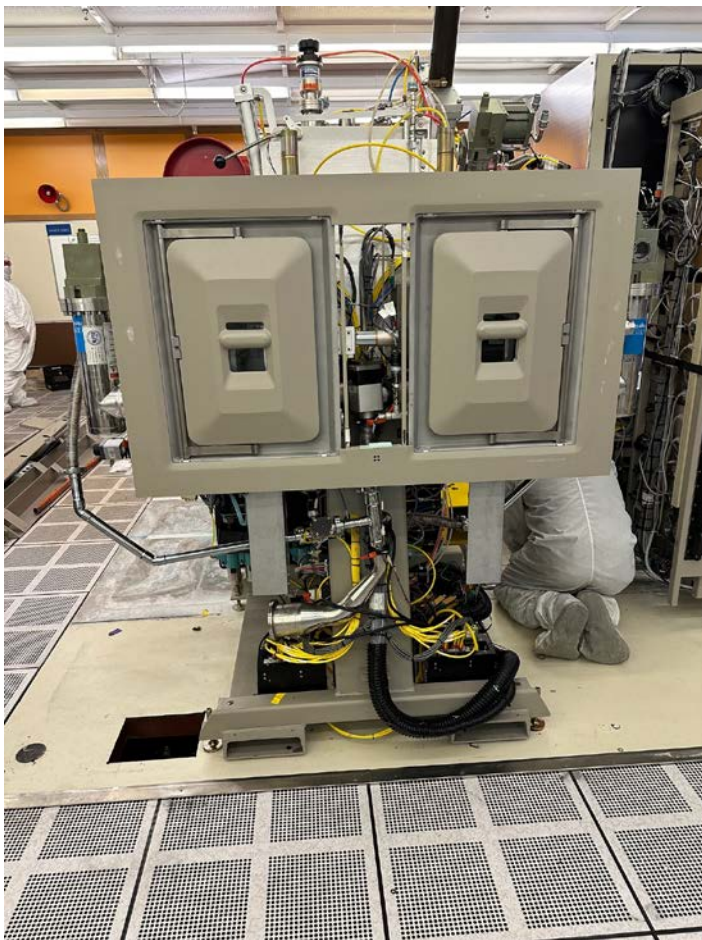
With help from the riggers, we removed the front panel





With help from the riggers, we removed the front panel (2)





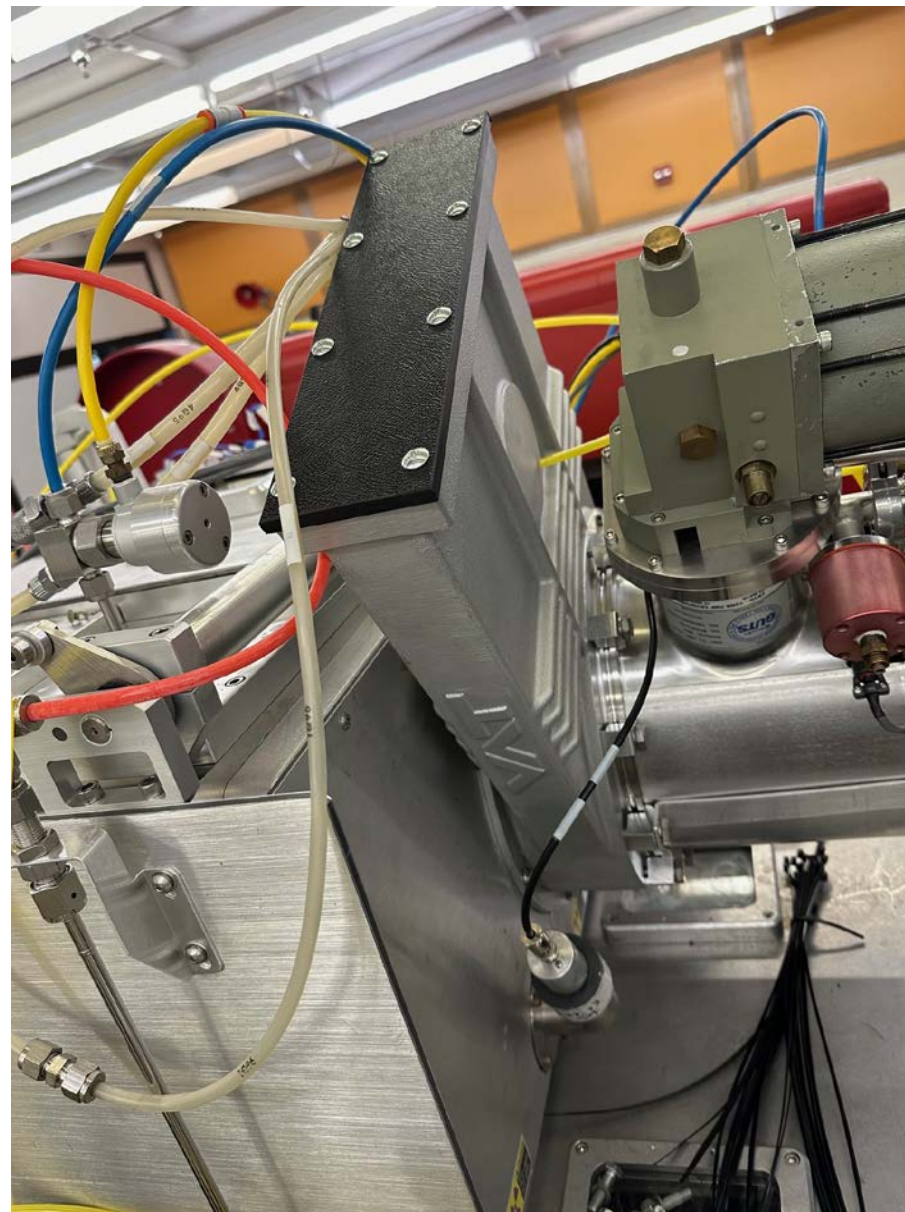
With help from the riggers the heavy enclosure rails were then removed



Shipping frames were then fitted to the underside of the terminal and insulators removed



End station gate valve lollipop removed to reduce height, and cover fitted.

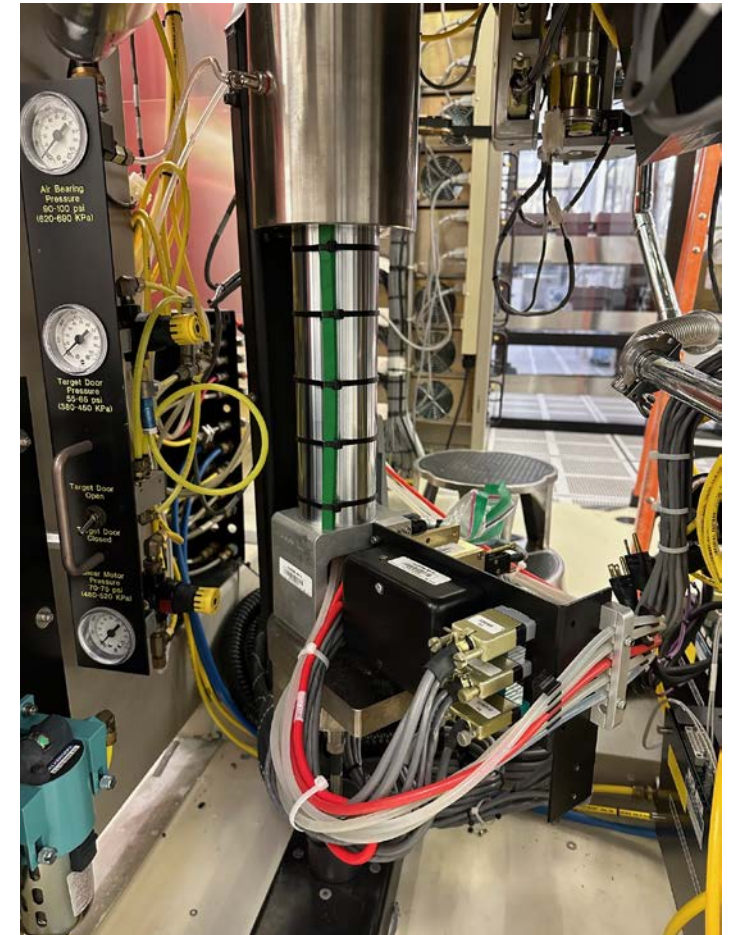


End station air bearing raised and secured for transit





End station air bearing raised and secured for transit (2)



Riggers began to remove items from the clean room.

It was expressed to the riggers that the items were very fragile and prone to scratches if not handled correctly.

It was also mentioned that fragile items like the insulators will need to be protective wrapped



Riggers began to remove items from the clean room.

It was expressed to the riggers that the items were very fragile and prone to scratches if not handled correctly.

It was also mentioned that fragile items like the insulators will need to be protective wrapped (2)





Riggers then began the move of the terminal



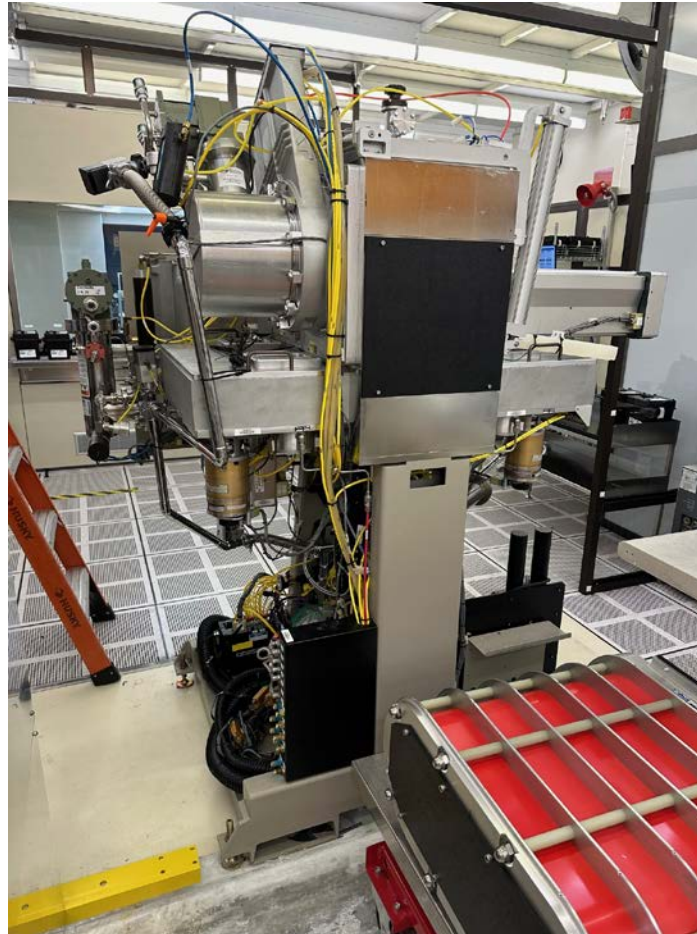


Riggers then began the move of the terminal (2).



Facilities module was then fitted with its shipping stabilizers.

The remaining modules and assemblies were then cordoned off for removal the following week.





Facilities module was then fitted with its shipping stabilizers.

The remaining modules and assemblies were then cordoned off for removal the following week.

We then left site, happy that the disassembly was complete.

