

Doppstadt

PRODUCT BOOK

2018/2019



Best Solution. Smart Recycling.

doppstadt.com



DOPPSTADT

Your Requirements. Our solutions.

In our new Product Book we'd like to introduce you our multifaceted solution range in the field of **recycling and environmental technology**. One thing that surely leaps out at you is the rearrangement of our portfolio, focussing on our skills and experience in providing tailor-made solutions to our customers.

The uppermost level is occupied by our **PRODUCT GROUPS**, e.g. "Smart Shredding", "Smart Chipping", "Smart Screening" – with the "Smart" part echoing the Doppstadt slogan, **Best Solutions. Smart Recycling** and our motivation to continually raise the bar for innovation,

versatility, efficiency, and user comfort.

On the next level below our **PRODUCT LINES** are structured according to principal use or functionality/mode of operation. To each line the respective **machine series** have been assigned, giving you an easily comprehensible overview of the Doppstadt product range even when new technologies and systems will be added successively.

The **new structure** serves yet another purpose: It represents our almost unlimited flexibility in **combining basic technologies and machines into tailor-made**

solutions from which our customers can generate substantial advantages regarding functionality and cost-effectiveness.

All of this provides a strong basis for our ability to tackle the ever evolving **challenges and requirements of the future**. We're convinced that only those market players able to provide quick and spot-on solutions will prevail over the long haul.

The new product guide is intended to give you a first overall impression of what we have to offer. It should by no means be considered a substitute for the „hands-on

experience" though. Having said this, we invite you to get a picture of our proven competence in providing **individual recycling solutions**. Doppstadt regularly exhibits at trade fairs and participates in conferences around the world. There is plenty of opportunity to get in touch with us!

We hope you enjoy our new Product Book and draw some inspiration from it!

YOUR DOPPSTADT-TEAM

THE PRODUCT LINES

Our solutions with new structures.

The new structure represents tailor-made solutions from which our customers can generate substantial advantages regarding functionality and cost-effectiveness.

SLOW SPEED SHREDDER LINE
MID SPEED SHREDDER LINE
GRINDER LINE
KOMBI SHREDDER LINE
TROMMEL LINE
SPLITTER LINE
STAR SCREEN LINE
FLATFLEX LINE
DRUMCHIPPER LINE
SIDE TURNER LINE

WINDROW TURNER LINE
WATERSIFTER LINE
WINDSIFTER LINE
WASH-TROMMEL LINE
WATER TREATMENT LINE
PRESS EXTRUDER LINE
MIXER LINE
HEAVY DUTY PULLEY LINE
CONVEYOR LINE
SAND TRAP LINE
LOG WASHER LINE
SAND SCREW LINE
DEWATERING SCREEN LINE
FLAT SCREEN LINE
VIBRATING SCREEN LINE

Please contact us for any further informations.

SLOW SPEED SHREDDER LINE

MID SPEED SHREDDER LINE

GRINDER LINE

KOMBI SHREDDER LINE



INVENTHOR



DW Mobile



DW Stationary



CURO



KIMO



AK Mobile



AK/NZ Stationary



DZ

TROMMEL LINE

STAR SCREEN LINE

SPLITTER LINE

FLATFLEX LINE



SM Mobile



BASIC



SST Stationary



SM Stationary



DST



H2 System



Unit



HS 400



HS 800



DRUMCHIPPER LINE



DH Mobile



DH Stationary

SIDE TURNER LINE

WINDROW TURNER LINE



DU



SCARAB

WATERSIFTER LINE

WINDSIFTER LINE



HDS



WS/EASY

WASH-TROMMEL LINE

WATER TREATMENT LINE



Griitbuster



Racoon



Lamella Clarifier/ Integrated Lamella Clarifier

PRODUCT BOOK 2018/2019

SMART SHREDDING

SLOW SPEED SHREDDER LINE 7
MID SPEED SHREDDER LINE 18
GRINDER LINE 21
KOMBI SHREDDER LINE 33

SMART SCREENING

TROMMEL LINE 37
STAR SCREEN LINE 53
SPLITTER LINE 55
FLATFLEX LINE 59

SMART CHIPPING

DRUMCHIPPER LINE 63

SMART TURNING

SIDE TURNER LINE 75
WINDROW TURNER LINE 77

SMART SIFTING

WATERSIFTER LINE 79
WINDSIFTER LINE 81

SMART WASHING

WASH-TROMMEL LINE 93
WATER TREATMENT LINE 96

SMART SOLID LIQUID SEPERATION

PRESS EXTRUDER LINE 101

SMART MIXING

MIXER LINE 103

SMART SHREDDING

SMART SCREENING

SMART CHIPPING

SMART TURNING

SMART SIFTING

SMART WASHING

SMART SHREDDING

SLOW SPEED SHREDDER LINE
KOMBI SHREDDER LINE
MID SPEED SHREDDER LINE
GRINDER LINE



SHREDDER INVENTHOR TYPE 9



Applications

The INVENTHOR Typ 9 is suitable für a great variety of materials such as old growth, stem wood, root wood, green waste, bio waste, domestic waste, bulky waste, commercial waste, mixed construction waste, tyres, railroad ties and many more. For special grinding requirements, the Doppstadt coarse grinding machines can be combined with other systems, e.g. fine shredders or drum screen machines.



DIMENSIONS	
Chassis	Semi-trailer
Total weight (kg)	32000 (Option SA) / 35000 (Option K)
Length (mm)	16787
Width (mm)	2500 (SA) / 3000 (K)
Height (mm)	5050 (SA) / 4890 (K)
Transport width (mm)	2500 (SA) / 3000 (K)
Transport height (mm)	3893 (SA) / 3863 (K)
Transport length (mm)	9971 (SA) / 9814 (K)

DRIVE	
Engine type	diesel engine
Make	MTU 6R 1300
Exhaust level	EUROMOT IV / Tier IV final
Motor power (kW / PS)	390 / 530
Fuel tank (l)	950
Engine type 2	diesel engine
Make	MTU 6R 1300
Exhaust level	EUROMOT III A
Motor power (kW / PS)	390 / 530

DISCHARGE CONVEYOR	
Width (mm)	1200
Length (mm)	8500
Belt speed (m/s)	2,0
Height (mm)	5050 (SA) / 4890 (K)

INFEED HOPPER	
Loading height (mm)	3307 (Option SA) / 3095 (Option K)

ROLLER	
Number of rollers	1
Roller Length (mm)	3.000
Roller Diameter (mm)	600 / 800
Roller Speed (min-1)	-5 to 32
Number of roller teeth	Size S (145), M (125), L (42) or XL (28)

Advantages

- New drive concept including direct, continuous power transmission based on patented „Vario DirectDrive“ system
- The Vario DirectDrive eliminates motor load when the drum is inactive and provides the required breakaway torque even from standstill. It also enables the machine to rid itself from wrap-arounds without having to stop it.
- Flexible grinding concept based on various grinding packages (sizes S, M, L, XL) consisting of drum/teeth + tooth strip + Limiter, allowing for exact adaption to the respective material requirements.
- New door and chassis concept with large comb flap for easy access to the entire grinding area.
- Plug & Play: After folding out the conveyors into the working position, the machine can be put into operation by pressing a button.
- Outstanding monitoring concept for the entire grinding process
- Reduced noise emissions
- Two chassis options available, semi-trailer or track-mounted, and various rear conveyor lengths, 7, 8.5, or 12 m (rigid), to realize maximum angles of repose

SHREDDER DW 2060 K



Applications

The shredders of the DOPPELSTADT DW series process waste wood, logs, roots, green waste, biowaste, garbage, bulky and industrial waste, mixed construction waste and much more. For special applications, the DW shredders can be easily combined with other Doppstadt products, such as grinders or screens.



DIMENSIONS

Chassis	Truck mounted
Total weight (kg)	20000
Length (mm)	10300
Width (mm)	2300
Height (mm)	3000
Transport width (mm)	2300
Transport height (mm)	3721/3180
Transport length (mm)	7319/8470

DRIVE

Engine type	Diesel engine
Make	Mercedes-Benz OM 926 LA
Exhaust level	EUROMOT III A
Motor power (kW / PS)	240 / 326
Fuel tank (l)	300

DISCHARGE CONVEYOR

Width (mm)	1000
Length (mm)	5000
Belt speed (m/s)	1 - 3,0
Height (mm)	3023

DISCHARGE CONVEYOR

Length (mm)	5000 / 5500
Width (mm)	1000
Belt speed (m/s)	1 - 3,0

INFEE HOPPER

Loading width (mm)	3000
Loading height (mm)	2813

ROLLER

Number of rollers	1
Roller Length (mm)	2000
Roller Diameter (mm)	600 / 800
Roller Speed (min-1)	27
Number of roller teeth	Size L=21 / BioPower=42 / M=125

Advantages

- Maximum efficiency at lowest operating costs using a 100% mechanical drive system and slow-going shredding technology
- Fine shredding system „Limiter“ (additional equipment)
- Contaminant-resistant shredding by applying a pneumo-hydraulic counter comb
- Integrated limitation of grain size using the Limiter system
- Optimization of shredding results by choosing from a great variety of shredding packages
- Maximum movability thanks to an extra robust track-mounted chassis allowing for two driving speeds

SHREDDER DW 3060 TYPE F



Applications

The shredders of the DOPPELSTADT DW series process waste wood, logs, roots, green waste, biowaste, garbage, bulky and industrial waste, mixed construction waste and much more. For special applications, the DW shredders can be easily combined with other Doppstadt products, such as grinders or screens.



DIMENSIONS

Chassis	3-axle-trailer
Total weight (kg)	25000
Length (mm)	13245
Width (mm)	2550
Height (mm)	3304
Transport width (mm)	2550
Transport height (mm)	3990
Transport length (mm)	9792

DRIVE

Engine type	diesel engine
Make	MTU 6R 1300
Exhaust level	EUROMOT IV / Tier IV final
Motor power (kW / PS)	320 / 435
Fuel tank (l)	600

Engine type 2	Mercedes Benz OM 460 LA
Exhaust level	EUROMOT III A
Motor power (kW / PS)	315 / 428

DISCHARGE CONVEYOR

Width (mm)	1200
Length (mm)	5500
Belt speed (m/s)	1,5 - 3 (3,8)
Height (mm)	3304

INFEE HOPPER

Loading width (mm)	4040
Loading height (mm)	2900*

ROLLER

Number of rollers	1
Roller Length (mm)	3.000
Roller Diameter (mm)	600 / 800
Roller Speed (min-1)	31
Number of roller teeth	Size L = 21, Size M = 125, Size S = 145

Advantages

- Maximum efficiency at lowest operating costs using a 100% mechanical drive system and slow-going shredding technology
- Contaminant-resistant shredding by applying a pneumo-hydraulic counter comb
- Optionally available contaminant-resistant fine-shredding system "Limiter"
- The application of different tooth sizes and shredding packages in one machine widens the range of possible grain sizes
- Integrated limitation of grain size using the Limiter system
- Optionally available near-mesh grain separator HS 401 "Selector" to realize finished end products without unwanted fine grain portions
- Finished end products without oversized materials using the rear star screen system "Selector" (1l Diesel fuel/t)
- Maximum operational safety based on the simple machine setup and the experience gained from more than 1.000 DW units currently operated in the various markets

SHREDDER DW 3060 TYPE F - BIOPOWER



Applications

The shredders of the DOPPELSTADT DW series process waste wood, logs, roots, green waste, biowaste, garbage, bulky and industrial waste, mixed construction waste and much more. For special applications, the DW shredders can be easily combined with other Doppstadt products, such as grinders or screens.



Advantages

- Maximum efficiency at lowest operating costs using a 100% mechanical drive system and slow-going shredding technology
- Contaminant-resistant shredding by applying a pneumo-hydraulic counter comb
- Optionally available contaminant-resistant fine-shredding system "Limiter"
- The application of different tooth sizes and shredding packages in one machine widens the range of possible grain sizes
- Integrated limitation of grain size using the Limiter system
- Optionally available near-mesh grain separator HS 401 and HS 800 "Selector" to realize finished end products without unwanted fine grain portions
- Finished end products without oversized materials using the rear star screen system "Selector" (1l Diesel fuel/t)
- Maximum operational safety based on the simple machine setup and the experience gained from more than 1.000 DW units currently operated in the various markets

DIMENSIONS

Chassis	3-axle-trailer
Total weight (kg)	25000
Length (mm)	13245
Width (mm)	2550
Height (mm)	3951
Transport width (mm)	2550
Transport height (mm)	3951
Transport length (mm)	9792

DRIVE

Engine type	Diesel engine
Make	MTU 6R 1300
Exhaust level	EUROMOT IV / Tier IV final
Motor power (kW / PS)	360 / 490
Fuel tank (l)	600
Torque (Nm)	2300

Engine type 2	Diesengine Daimler OM 460LA
Exhaust level	EUROMOT III A
Torque (Nm)	2200

DISCHARGE CONVEYOR

Width (mm)	1404
Length (mm)	5500
Belt speed (m/s)	1,5 - 3 (3,8)
Height (mm)	3304

INFEED HOPPER

Loading width (mm)	4040
Loading height (mm)	2900*

ROLLER

Number of rollers	1
Roller Length (mm)	3000
Roller Diameter (mm)	600 / 800
Roller Speed (min-1)	28
Number of roller teeth	Size L = 42, M = 125, S = 145

SHREDDER DW 3060 K TYPE F



Applications

The shredders of the DOPPELSTADT DW series process waste wood, logs, roots, green waste, biowaste, garbage, bulky and industrial waste, mixed construction waste and much more. For special applications, the DW shredders can be easily combined with other Doppstadt products, such as grinders or screens.



Advantages

- Maximum efficiency at lowest operating costs using a 100% mechanical drive system and slow-going shredding technology
- Contaminant-resistant shredding by applying a pneumo-hydraulic counter comb
- Optionally available contaminant-resistant fine-shredding system "Limiter", integrated limitation of grain size using the Limiter system
- The application of different tooth sizes and shredding packages in one machine widens the range of possible grain sizes
- Optionally available near-mesh grain separator HS 401 "Selector" to realize finished end products without unwanted fine grain portions
- Finished end products without oversized materials using the rear star screen system "Selector" (1l Diesel fuel/t)
- Maximum operational safety based on the simple machine setup and the experience gained from more than 1.000 DW units currently operated in the various markets
- Maximum movability thanks to an extra robust track-mounted chassis allowing for two driving speeds

DIMENSIONS

Chassis	Steel-tracks
Total weight (kg)	30000
Length (mm)	13460
Width (mm)	2800
Height (mm)	4000
Transport width (mm)	2800
Transport height (mm)	3329
Transport length (mm)	10360

DRIVE

Engine type	diesel engine
Make	MTU 6R 1300
Exhaust level	EUROMOT IV / Tier IV final
Motor power (kW / PS)	320 / 435
Fuel tank (l)	600

DISCHARGE CONVEYOR

Width (mm)	1200
Length (mm)	7000
Belt speed (m/s)	1,5 - 3 (3,8)
Height (mm)	4222

INFEED HOPPER

Loading width (mm)	4040
Loading height (mm)	2825*

ROLLER

Number of rollers	1
Roller Length (mm)	3000
Roller Diameter (mm)	600 / 800
Roller Speed (min-1)	31
Number of roller teeth	Size XL = 14, L = 21, M = 125, S = 145

SHREDDER DW 3060 K TYPE F - BIOPOWER



Applications

The shredders of the DW series process waste wood, logs, roots, green waste, biowaste, garbage, bulky and industrial waste, mixed construction waste and much more. For special applications, the DW shredders can be easily combined with other Doppsstadt products, such as grinders or screens.



DIMENSIONS

Chassis	Steel-tracks
Total weight (kg)	30000
Length (mm)	13460
Width (mm)	2800
Height (mm)	4000
Transport width (mm)	2800
Transport height (mm)	3329
Transport length (mm)	10360

DRIVE

Engine type	diesel engine
Make	MTU 6R 1300
Exhaust level	EUROMOT IV / Tier IV final
Motor power (kW / PS)	360 / 490
Fuel tank (l)	600
Torque (Nm)	2300

Engine type 2	Mercedes diesel engine OM 460 LA
Exhaust level	EUROMOT III A

DISCHARGE CONVEYOR

Width (mm)	1200
Length (mm)	7000
Belt speed (m/s)	1,5 - 3 (3,8)
Height (mm)	4222

INFEEED HOPPER

Loading width (mm)	4040
Loading height (mm)	2825*

ROLLER

Number of rollers	1
Roller Length (mm)	3000
Roller Diameter (mm)	600 / 800
Roller Speed (min-1)	28
Number of roller teeth	Size XL=14, L BioP.=42, M=125, S=145

Advantages

- Maximum efficiency at lowest operating costs using a 100% mechanical drive system and slow-going shredding technology
- Contaminant-resistant shredding by applying a pneumo-hydraulic counter comb
- Optionally available contaminant-resistant fine-shredding system "Limiter", integrated limitation of grain size using the Limiter system
- The application of different tooth sizes and shredding packages in one machine widens the range of possible grain sizes
- Optionally available near-mesh grain separator HS 401 and HS 800 "Selector" to realize finished end products without unwanted fine grain portions
- Finished end products without oversized materials using the rear star screen system "Selector" (1l Diesel fuel/t)
- Maximum operational safety based on the simple machine setup and the experience gained from more than 1.000 DW units currently operated in the various markets
- Maximum movability thanks to an extra robust track-mounted chassis allowing for two driving speeds

SHREDDER DW 2060 E



Applications

The shredders of the DW series process waste wood, logs, roots, green waste, biowaste, garbage, bulky and industrial waste and much more. The DW shredders are suitable for all task in the areas of mechanical-biological recycling, biomass, surrogate fuels, and demolition of disposal sites.



DIMENSIONS

Chassis	Static
Total weight (kg)	16000
Length (mm)	6200
Width (mm)	2125
Height (mm)	3000
Transport width (mm)	2125
Transport height (mm)	2450
Transport length (mm)	6640

DRIVE

Engine type	AC Motor
Make	ABB
Motor power (kW / PS)	132 / 180

Engine type 2	AC Motor
Make	ABB
Motor power (kW / PS)	160 / 218

DISCHARGE CONVEYOR

Width (mm)	800
Height (mm)	750

DISCHARGE CONVEYOR

Length (mm)	3200 or 6300
Width (mm)	800

ROLLER

Number of rollers	1
Roller Length (mm)	2000
Roller Diameter (mm)	600
Roller Speed (min-1)	23
Number of roller teeth	14

Advantages

- Universally applicable – shredding of various materials
- Flexibility of larger DW models when operating in confined space
- Versatile for use thanks to a great setup variety, a wide range of tooth shapes, drive gear systems, stands or lower belt conveyors
- Low power consumption by way of direct motor drive and rectifier
- Solid machine chassis guarantees long life time
- Customizable for many different installations both new and existing

SHREDDER DW 206 CERON



Applications

The shredders of the DW series process waste wood, logs, roots, green waste, biowaste, garbage, bulky and industrial waste, mixed construction waste and much more. The DW shredders are suitable for all task in the areas of mechanical-biological recycling, biomass, surrogate fuels, and demolition of disposal sites.

DIMENSIONS

Chassis	Static
Total weight (kg)	28000
Length (mm)	6445
Width (mm)	2731
Height (mm)	3745

DRIVE

Engine type	DC-Motor
Make	TT-Electric
Motor power (kW / PS)	210 / 285
Installed power (kW)	245
Torque (Nm)	1000

Engine type 2	DC-Motor
Motor power (kW / PS)	315 / 430
Torque (Nm)	1500

Engine type 3	DC-motor
Motor power (kW / PS)	380 / 516
Torque (Nm)	1800

ROLLER

Number of rollers	1
Roller Length (mm)	2000
Roller Diameter (mm)	600
Number of roller teeth	depending on the equipment



Advantages

- Universally applicable – shredding of various materials
- Versatile for use thanks to a great setup variety, a wide range of tooth shapes, drive gear systems, stands or lower belt conveyors
- Low power consumption by way of direct motor drive and rectifier
- Solid machine chassis guarantees long life time
- Service and maintenance-friendly thanks to the comb flap gate enabling a direct access to the shredding tools. The shredding roller can be driven in inching operation thus facilitating the tool change.
- Customizable for many different installations both new and existing

SHREDDER DW 256 CERON TYP B



Applications

The shredders of the DW series process waste wood, logs, roots, green waste, biowaste, garbage, bulky and industrial waste, mixed construction waste and much more. The DW shredders are suitable for all task in the areas of mechanical-biological recycling, biomass, surrogate fuels, and demolition of disposal sites.

DIMENSIONS

Chassis	Static
Total weight (kg)	33500
Length (mm)	7290
Width (mm)	3068
Height (mm)	5250

DRIVE

Engine type	DC-Motor
Make	TT-Electric
Motor power (kW / PS)	210 / 285
Installed power (kW)	235
Torque (Nm)	1000

Engine type 2	DC-Motor
Motor power (kW / PS)	315 / 428
Torque (Nm)	1500

Engine type 3	DC-motor
Motor power (kW / PS)	380 / 516
Torque (Nm)	1800

INFEED HOPPER

Loading width (mm)	2660
Loading height (mm)	3950 depending on steel framework

ROLLER

Number of rollers	1
Roller Length (mm)	2500
Roller Diameter (mm)	600 / 800
Roller Speed (min-1)	210kW 8-32 / 315,380kW 7-28
Number of roller teeth	depending on the equipment



Advantages

- Universally applicable – shredding of various materials
- Versatile for use thanks to a great setup variety, a wide range of tooth shapes, drive gear systems, stands or lower belt conveyors
- Low power consumption by way of direct motor drive and rectifier
- Solid machine chassis guarantees long life time
- Service and maintenance-friendly thanks to the comb flap gate enabling a direct access to the shredding tools. The shredding roller can be driven in inching operation thus facilitating the tool change.
- Customizable for many different installations both new and existing

SHREDDER DW 306 CERON



Applications

The shredders of the DW series process waste wood, logs, roots, green waste, biowaste, garbage, bulky and industrial waste, mixed construction waste and much more. The DW shredders are suitable for all task in the areas of mechanical-biological recycling, biomass, surrogate fuels, and demolition of disposal sites.



Advantages

- Universally applicable – shredding of various materials
- Versatile for use thanks to a great setup variety, a wide range of tooth shapes, drive gear systems, stands or lower belt conveyors
- Low power consumption by way of direct motor drive and rectifier
- Solid machine chassis guarantees long life time
- Service and maintenance-friendly thanks to the comb flap gate enabling a direct access to the shredding tools. The shredding roller can be driven in inching operation thus facilitating the tool change.
- Customizable for many different installations both new and existing

DIMENSIONS

Chassis	Static
Total weight (kg)	35000
Length (mm)	7700
Width (mm)	3068
Height (mm)	4190

DRIVE

Engine type	DC-Motor
Make	TT-Electric
Motor power (kW / PS)	380 / 516
Installed power (kW)	415
Torque (Nm)	1800

Engine type 2	DC-Motor
Motor power (kW / PS)	315 / 430
Torque (Nm)	1500

ROLLER

Number of rollers	1
Roller Length (mm)	3000
Roller Diameter (mm)	600 / 800
Number of roller teeth	depending on the equipment

SHREDDER DW 308 RHINO



Applications

The shredders of the DW series process waste wood, logs, roots, green waste, biowaste, garbage, bulky and industrial waste, mixed construction waste and much more. The DW shredders are suitable for all task in the areas of mechanical-biological recycling, biomass, surrogate fuels, and demolition of disposal sites.



DIMENSIONS

Chassis	Static
Total weight (kg)	38000-45000
Length (mm)	7425
Width (mm)	3072
Height (mm)	3045
Transport width (mm)	3072
Transport height (mm)	3045
Transport length (mm)	7425

DRIVE

Engine type	AC Motor
Make	ABB
Motor power (kW / PS)	315 / 428
Installed power (kW)	350, depending on the equipment
Torque (Nm)	2000
messages.cEffizienz	IE3

Engine type 2	AC Motor
Make	ABB
Motor power (kW / PS)	450 / 611
Torque (Nm)	2900

INFED HOPPER

Loading width (mm)	3640
Loading height (mm)	3930 depending on steel framework

ROLLER

Number of rollers	1
Roller Length (mm)	3000
Roller Diameter (mm)	800 / 1000
Roller Speed (min-1)	13-15, depending on the equipment
Number of roller teeth	depending on the equipment

Advantages

- New drive technology with rotary current motor and frequency converter. Less laborious maintenance compared to the smaller Ceron series.
- Driven by robust straight bevel gear pair and belt drive. Several gear reductions available, easy change of the motor belt pulley.
- Very good speed-torque behaviour, because the torque is increased under load and in case of speed drop (comparable with a Vario gearbox from the Inventhor series).
- Modular design of the machine making more equipment variants available. Shredding systems M, L and XL.
- Service and maintenance-friendly thanks to the comb flap gate enabling a direct access to the shredding tools. The shredding roller can be driven in inching operation thus facilitating the tool change.
- Robust frame design, weight depending on the equipment up to 45 tons.
- Even suited for very dusty environments because the rotary current motor is resistant to dust.
- Automatic reversing of the shredding roller in case of overload. The machine reverses automatically and then changes to forward running again.

SHREDDER CURO TYPE 250



Applications

The secondary shredder CURO Type 250 produces fine shredded material e.g. for use as refuse derived fuel, or can be used for the shredding of pre-sorted municipal and industrial waste mostly composed of plastic film.



Advantages

- Robust machine frame
- Load sensing feeding via hydraulic pusher system
- Able to start up with full processing chamber
- Easily changeable tools by means of simple bolt connections on the rotor and stator tools
- High efficiency due to large rotor mass
- Shear pin coupling on rotor drive protects the machine against damage from foreign objects
- Variable rotor speed from 100 to 350 rpm
- Easy access due to large maintenance doors

DIMENSIONS

Chassis	Static
Total weight (kg)	22000
Length (mm)	3780
Width (mm)	2606
Height (mm)	4013

DRIVE

Engine type	electric
Motor power (kW / PS)	250 / 340

ROLLER

Roller Speed (min-1)	100-350
----------------------	---------

INFEED HOPPER

Loading width (mm)	2000
Loading height (mm)	2978

ROLLER

Number of rollers	1
Roller Speed (min-1)	100-350
Number of roller teeth	48

SHREDDER KIMO TYPE 16



Applications

The KIMO Type 16 shreds a wide range of feed material: from high-calorific lightweight packaging to aluminium or copper scrap. Accordingly, it serves to define the grain size of RDF for ideal combustion or is used for the disintegration comminution for example of cable scrap.



DIMENSIONS

Chassis	Static
Total weight (kg)	2350
Length (mm)	2990
Width (mm)	2800
Height (mm)	3360

DRIVE

Engine type	electric
Motor power (kW / PS)	250 / 340

ROLLER

Roller Speed (min-1)	250
----------------------	-----

INFEED HOPPER

Loading width (mm)	1630
Loading height (mm)	3360

ROLLER

Number of rollers	1
Roller Speed (min-1)	250
Number of roller teeth	40

Advantages

- Low operating cost due long service live, low power consumption, and low spare part cost.
- High throughput due to high tool holder and thus more capacity of the processing chamber
- Large power reserves due to high momentum of inertia (largest rotor in the market)
- Heavy machine frame makes anchors to the floor redundant

SHREDDER KIMO TYPE 20



Applications

The KIMO Type 20 is the largest secondary shredder offered by Doppstadt. It can not only shred high-calorific lightweight packaging and plastic film. Even harder cases such as aluminum or copper scrap are a breeze to work with this cutting mill. The secondary shredding step ensures a defined combustion and larger surface area in the case of processing refuse derived fuels. In cable scrap and similar applications, the goal is mostly to disintegrate clusters of different substances and then separate them in subsequent processing steps.



DIMENSIONS

Chassis	Static
Total weight (kg)	26000
Length (mm)	2990
Width (mm)	3200
Height (mm)	3360

DRIVE

Engine type	electric
Motor power (kW / PS)	315 / 428

ROLLER

Roller Speed (min-1)	250
----------------------	-----

INFEED HOPPER

Loading width (mm)	2020
Loading height (mm)	3360

ROLLER

Number of rollers	1
Roller Speed (min-1)	250
Number of roller teeth	50

Advantages

- Low operating cost due long service live, low power consumption, and low spare part cost.
- High throughput due to high tool holder and thus more capacity of the processing chamber
- Large power reserves due to high momentum of inertia (largest rotor in the market)
- Heavy machine frame makes anchors to the floor redundant

SHREDDER AK 310 ECOPOWER



Applications

The universal grinders of the Doppstadt AK series process green waste, yard waste, biowaste, pre-shredded logs and roots, waste wood and wooden pallets. For special applications, the AK grinders can be combined with other Doppstadt products, such as shredders or screening machines.



DIMENSIONS

Chassis	2-axle-trailer
Total weight (kg)	16000
Length (mm)	12890
Width (mm)	2150
Height (mm)	3550
Transport width (mm)	2150
Transport height (mm)	3080
Transport length (mm)	9240

DRIVE

Engine type	Diesel engine
Make	MTU 6R 1000
Exhaust level	EUROMOT IV / Tier IV final
Motor power (kW / PS)	230 / 310
Fuel tank (l)	300
Torque (Nm)	1250 Nm at 1200-1600 rpm

Engine type 2	MTU 6R 1000
Exhaust level	EUROMOT III A
Motor power (kW / PS)	230 / 310
Torque (Nm)	1250 Nm at 1200-1600 rpm

DISCHARGE CONVEYOR

Width (mm)	1500
Length (mm)	6190* (*option)
Belt speed (m/s)	2
Height (mm)	3550

FLAIL DRUM

Width (mm)	1470
Diameter (mm)	900
Speed (min-1)	1140 - 1320 rpm (dep. on engine speed)
Number of Flail teeth	16/28

INFEED HOPPER

Loading width (mm)	2730
Loading height (mm)	2080

Advantages

- Compact construction, contaminant-resistant
- Ideal for smaller facilities
- free-swinging flails of the flail drum (gyrating mass appr. 1,3 t (2,866 lb) are provided with easily individual replaceable flail tips that can be adjusted to the materials to be grinded (e.g. hard metal, armoured tips)
- Quickly replaceable tools, Easy maintenance, One-man operation
- Quick refitting for other materials
- continuous grinding by means of load-sensing material in-feed
- Discharge conveyor with length of 6 m* (*option)
- replaceable grinding basket*, the mesh size (30 - 320 mm / 1.2 - 12.6") determines the material grain size, (*option)

SHREDDER AK 510 K BIOPOWER



Applications

The grinders of the Doppstadt AK series process green waste, yard waste, biowaste, pre-shredded logs and roots, waste wood and wooden pallets. For special applications, the AK grinders can be combined with other Doppstadt products, such as shredders or screening machines.



DIMENSIONS

Chassis	Steel-tracks
Total weight (kg)	29000
Length (mm)	13590
Width (mm)	3000
Height (mm)	4570
Transport width (mm)	3000
Transport height (mm)	3390
Transport length (mm)	8680

DRIVE

Engine type	diesel engine
Make	Mercedes Benz OM 460 LA.E3A
Exhaust level	EUROMOT III A
Motor power (kW / PS)	375 / 510
Fuel tank (l)	600
Torque (Nm)	2150 Nm bei 1300 rpm

DISCHARGE CONVEYOR

Width (mm)	1500
Length (mm)	7000
Belt speed (m/s)	1,6
Height (mm)	4570

FLAIL DRUM

Width (mm)	1750
Diameter (mm)	1120
Speed (min-1)	850 -1000 rpm (dep. on engine speed)
Number of Flail teeth	36

INFEED HOPPER

Loading width (mm)	2670
Loading height (mm)	2220

Advantages

- continuous grinding by means of load-sensing material in-feed
- resistant against contaminants thanks to free-swinging flails
- free-swinging flails of the flail drum (gyrating mass appr. 2,5 t (5,512 lb), easily and individual replaceable flail tips that can be adjusted to the materials to be grinded (e.g. hard metal, armoured tips)
- easy one-man operation (remote control* of all main functions), the machine can be moved easy via tracklaying chassis, * option
- replaceable grinding basket*, the mesh size (30 – 400 mm / 1.2 – 15.75") determines the material grain size, * option

SHREDDER AK 560 ECOPOWER



Applications

The universal grinders of the Doppstadt AK series process green waste, yard waste, biowaste, pre-shredded logs and roots, waste wood and wooden pallets. For special applications, the AK grinders can be combined with other Doppstadt products, such as shredders or screening machines.



DIMENSIONS

Chassis	2-axle-trailer
Total weight (kg)	19000
Length (mm)	11630
Width (mm)	2500
Height (mm)	3310
Transport width (mm)	2500
Transport height (mm)	3960
Transport length (mm)	9620

DRIVE

Engine type	diesel engine
Make	MTU 6R 1300
Exhaust level	Euromot IV / Tier IV final
Motor power (kW / PS)	390 / 530
Fuel tank (l)	450
Torque (Nm)	2460 Nm at 1300 rpm

Engine type 2	Mercedes Benz OM 460 LA.E3A
Exhaust level	Euromot III A
Motor power (kW / PS)	375 / 510
Torque (Nm)	2150 Nm at 1300 rpm

DISCHARGE CONVEYOR

Width (mm)	1800
Length (mm)	4000* oder 6000* (*optional)
Belt speed (m/s)	2
Height (mm)	3000

FLAIL DRUM

Width (mm)	1750
Diameter (mm)	1120
Speed (min-1)	850-1000 rpm (dep. on engine speed)
Number of Flail teeth	36

INFEED HOPPER

Loading width (mm)	2670
Loading height (mm)	2180

Advantages

- Separate power unit for feeder
- resistant against contaminants thanks to free-swinging flails
- Short set-up time, easy maintenance
- One-man operation
- Discharge conveyor with length of 4 m* "classic" or 6 m* "light" (*option)
- continuous grinding by means of load-sensing material in-feed
- free-swinging flails of the flail drum (gyrating mass appr. 2,5 t (5,512 lb) are provided with easily individual replaceable flail tips that can be adjusted to the materials to be grinded (e.g. hard metal, armoured tips)
- replaceable grinding basket*, the mesh size (30 – 400 mm / 1.2 – 15.75") determines the material grain size, (*option)

SHREDDER AK 560 ECOPOWER PLUS



Applications

The universal grinders of the Doppstadt AK series process green waste, yard waste, biowaste, pre-shredded logs and roots, waste wood and wooden pallets. For special applications, the AK grinders can be combined with other Doppstadt products, such as shredders or screening machines.

DIMENSIONS

Chassis	3-axle-trailer
Total weight (kg)	22000
Length (mm)	13225
Width (mm)	2500
Height (mm)	4200
Transport width (mm)	2500
Transport height (mm)	3750
Transport length (mm)	9890

DRIVE

Engine type	Dieselmotor
Make	MTU 6R 1300
Exhaust level	Euromot IV / Tier IV final
Motor power (kW / PS)	390 / 530
Fuel tank (l)	600
Torque (Nm)	2460 Nm at 1300 rpm

Engine type 2	Mercedes Benz OM 460 LA.E3A
Exhaust level	Euromot III A
Motor power (kW / PS)	375 / 510
Torque (Nm)	2150 Nm at 1300 rpm

DISCHARGE CONVEYOR

Width (mm)	1800
Length (mm)	6000
Belt speed (m/s)	2
Height (mm)	4200

FLAIL DRUM

Width (mm)	1750
Diameter (mm)	1120
Speed (min-1)	850-1000 rpm (dep. on engine speed)
Number of Flail teeth	36

INFEED HOPPER

Loading width (mm)	2670
Loading height (mm)	2200



Advantages

- Separate power unit for feeder
- resistant against contaminants thanks to free-swinging flails
- Short set-up time
- One-man operation
- Easy maintenance
- continuous grinding by means of load-sensing material in-feed
- free-swinging flails of the flail drum (gyrating mass appr. 2,5 t (5,512 lb) are provided with easily individual replaceable flail tips that can be adjusted to the materials to be grinded (e.g. hard metal, armoured tips)
- replaceable grinding basket*, the mesh size (30 – 400 mm / 1.2 – 15.75") determines the material grain size, * option

SHREDDER AK 635 K ECOPOWER



Applications

The universal grinders of the Doppstadt AK series process green waste, yard waste, biowaste, pre-shredded logs and roots, waste wood and wooden pallets. For special applications, the AK grinders can be combined with other Doppstadt products, such as shredders or screening machines.

DIMENSIONS

Chassis	Steel-tracks
Total weight (kg)	32500
Length (mm)	15910
Width (mm)	3000
Height (mm)	5150
Transport width (mm)	3000
Transport height (mm)	3390
Transport length (mm)	10170

DRIVE

Engine type	diesel engine
Make	MTU 6R 1500
Exhaust level	EUROMOT III A / IV / Tier IV final
Motor power (kW / PS)	460 / 625
Fuel tank (l)	750
Torque (Nm)	2900 Nm at 1300 rpm

DISCHARGE CONVEYOR

Width (mm)	1500
Length (mm)	8000
Belt speed (m/s)	2
Height (mm)	5150

FLAIL DRUM

Width (mm)	1750
Diameter (mm)	1120
Speed (min-1)	970-1140 rpm (dep. on engine speed)
Number of Flail teeth	36

INFEED HOPPER

Loading width (mm)	3500
Loading height (mm)	2220



Advantages

- Easy one-man operation (remote control of all main functions), the machine can be moved easy via tracklaying chassis, high off-road mobility
- continuous grinding with maximum performance by means of load sensing material in-feed
- contaminant resistant thanks to free-swinging flails
- large protection doors on either side and centralized lubrication points for easy maintenance and short set-up time
- 8 m long rear discharge conveyor belt with 5 m drop height by default – and an anti-magnetic centerpiece included in rear discharge conveyor belt
- separate power unit for feeder
- free-swinging flails of the flail drum (gyrating mass appr. 2,5 t (5,512 lb) are provided with easily individual replaceable flail tips that can be adjusted to the materials to be grinded (e.g. hard metal, armoured tips)
- replaceable grinding basket*, the mesh size (30 – 400 mm / 1.2 – 15.75") determines the material grain size, * option

SHREDDER AK 635 SA ECOPOWER



Applications

The universal grinders of the Doppstadt AK series process green waste, yard waste, biowaste, pre-shredded logs and roots, waste wood and wooden pallets. For special applications, the AK grinders can be combined with other Doppstadt products, such as shredders or screening machines.



Advantages

- Continuous grinding with maximum performance by means of load sensing material in-feed
- 6 m feeding hopper and 8 m long discharge conveyor
- Contaminant resistant thanks to free-swinging flails
- Easy one-man operation and short set-up time
- Large protection doors on either side and centralized lubrication points for easy maintenance
- Separate power unit for feeder
- free-swinging flails of the flail drum (gyrating mass appr. 2,5 t (5,512 lb) are provided with easily individual replaceable flail tips that can be adjusted to the materials to be grinded (e.g. hard metal, armoured tips)
- replaceable grinding basket*, the mesh size (30 – 400 mm / 1.2 – 15.75") determines the material grain size, * option

DIMENSIONS

Chassis	Semi-trailer
Total weight (kg)	32000
Length (mm)	17870
Width (mm)	2500
Height (mm)	5200
Transport width (mm)	2500
Transport height (mm)	3930
Transport length (mm)	12410

DRIVE

Engine type	diesel engine
Make	MTU 6R 1500
Exhaust level	EUROMOT IV / Tier IV final
Motor power (kW / PS)	460 / 625
Fuel tank (l)	900
Torque (Nm)	2900 Nm at 1300 rpm

Engine type 2	MTU 6R 1500
Exhaust level	Euromot III A
Motor power (kW / PS)	460 / 625
Torque (Nm)	2900 Nm at 1300 rpm

DISCHARGE CONVEYOR

Width (mm)	1500
Length (mm)	8000
Belt speed (m/s)	2
Height (mm)	5200

FLAIL DRUM

Width (mm)	1750
Diameter (mm)	1120
Speed (min-1)	970-1140 rpm (dep. on engine speed)
Number of Flail teeth	36

INFED HOPPER

Loading width (mm)	5770
Loading height (mm)	2420

SHREDDER AK 235 E



Applications

The stationary grinder AK 235 E can be used to grind biowaste and green waste in composting plants, for different qualities of wood in waste wood processing plants, in biomass processing plants and for various grinding tasks in the field of recycling.



Advantages

- Continuous grinding by means of load sensing material in-feed
- Resistance against extraneous material due to free swinging flails, compensating counter rasp and sieve-baskets
- Rapid exchange system for the meshed sieve-baskets
- Large selection of accessories and grinding tools

DIMENSIONS

Chassis	Static
Total weight (kg)	Approx. 14000
Length (mm)	6700
Width (mm)	2180
Height (mm)	1800
Transport width (mm)	2180
Transport height (mm)	1800
Transport length (mm)	6710

DRIVE

Engine type	AC-motor frequency driven
Make	ABB
Motor power (kW / PS)	160 / 218
Installed power (kW)	180
Torque (Nm)	2000
messages.cEffizienz	IE3

DISCHARGE CONVEYOR

Length (mm)	5000
Width (mm)	1200
Belt speed (m/s)	0,5

FLAIL DRUM

Width (mm)	1430
Diameter (mm)	900
Speed (min-1)	1430
Number of Flail teeth	16/28

SHREDDER AK 440 VE



Applications

The stationary grinder AK 440 VE can be used to grind biowaste and green waste in composting plants, for different qualities of wood in waste wood processing plants, in biomass processing plants and for various grinding tasks in the field of recycling.



DIMENSIONS

Chassis	Static
Total weight (kg)	Approx. 22000
Length (mm)	7883
Width (mm)	2626
Height (mm)	3832
Transport width (mm)	2626
Transport height (mm)	2932
Transport length (mm)	7883

DRIVE

Engine type	AC-motor frequency driven
Make	ABB
Motor power (kW / PS)	250 / 340
Installed power (kW)	270
Torque (Nm)	2000
messages.cEffizienz	IE2

DISCHARGE CONVEYOR

Length (mm)	6000
Width (mm)	1600
Belt speed (m/s)	0,5
Loading height (mm)	3.046 using a 900 mm steel framework

FLAIL DRUM

Width (mm)	1750
Diameter (mm)	1120
Speed (min-1)	1000
Number of Flail teeth	36

Advantages

- Main drive, scraper floor and feed-in drum are precisely coordinated and controlled by frequency converter thus ensuring an optimal utilization of the machine and a continuous material infeed by direct, electric load-sensing of the drive units.
- Flail rows topologically overlap for a better shredding result
- Free swinging flails, retracting in case of contaminants
- Quick-changing system for the baskets
- Optimized safety system with sensor-less standstill monitoring
- Easy transport, because the machine is delivered ready assembled with base frame and discharge conveyor in one.
- Quick mounting and commissioning thanks to BUS control. Therefore reduction of the required cable routing.

SHREDDER AK 540 VE



Applications

The stationary grinder AK 540 VE can be used to grind biowaste and green waste in composting plants, for different qualities of wood in waste wood processing plants, in biomass processing plants and for various grinding tasks in the field of recycling.



DIMENSIONS

Chassis	Static
Total weight (kg)	Approx. 22000
Length (mm)	7883
Width (mm)	2626
Height (mm)	3832
Transport width (mm)	2626
Transport height (mm)	2932
Transport length (mm)	7883

DRIVE

Engine type	AC-motor frequency driven
Make	ABB
Motor power (kW / PS)	315 / 430
Installed power (kW)	335
Torque (Nm)	2000
messages.cEffizienz	IE2

DISCHARGE CONVEYOR

Length (mm)	6000
Width (mm)	1600
Belt speed (m/s)	0,5
Loading height (mm)	3.046 using a 900 mm steel framework

FLAIL DRUM

Width (mm)	1750
Diameter (mm)	1120
Speed (min-1)	1000
Number of Flail teeth	36

Advantages

- Main drive, scraper floor and feed-in drum are precisely coordinated and controlled by frequency converter thus ensuring an optimal utilization of the machine and a continuous material infeed by direct, electric load-sensing of the drive units.
- Flail rows topologically overlap for a better grinding result
- Free swinging flails, retracting in case of contaminants
- Quick-changing system for the baskets
- Optimized safety system with sensor-less standstill monitoring
- Easy transport, because the machine is delivered ready assembled with base frame and discharge conveyor in one.
- Quick mounting and commissioning thanks to BUS control. Therefore reduction of the required cable routing.

SHREDDER AK 640 VE



Applications

The stationary grinder AK 640 VE can be used to grind biowaste and green waste in composting plants, for different qualities of wood in waste wood processing plants, in biomass processing plants and for various grinding tasks in the field of recycling.

DIMENSIONS

Chassis	Static
Total weight (kg)	Approx. 22000
Length (mm)	7883
Width (mm)	2626
Height (mm)	3832
Transport width (mm)	2626
Transport height (mm)	2932
Transport length (mm)	7883

DRIVE

Engine type	AC-motor frequency driven
Make	ABB
Motor power (kW / PS)	450 / 611
Installed power (kW)	470
Torque (Nm)	2800

DISCHARGE CONVEYOR

Length (mm)	6000
Width (mm)	1600
Belt speed (m/s)	0,5
Loading height (mm)	3.046 using a 900 mm steel framework

FLAIL DRUM

Width (mm)	1750
Diameter (mm)	1120
Speed (min-1)	1000
Number of Flail teeth	36



Advantages

- Main drive, scraper floor and feed-in drum are precisely coordinated and controlled by frequency converter thus ensuring an optimal utilization of the machine and a continuous material infeed by direct, electric load-sensing of the drive units.
- Flail rows topologically overlap for a better grinding result
- Free swinging flails, retracting in case of contaminants
- Quick-changing system for the baskets
- Optimized safety system with sensor-less standstill monitoring
- Easy transport, because the machine is delivered ready assembled with base frame and discharge conveyor in one.
- Quick mounting and commissioning thanks to BUS control. Therefore reduction of the required cable routing.

SHREDDER AK 640 L VE



Applications

The stationary grinder AK 640 L VE can be used to grind biowaste and green waste in composting plants, for different qualities of wood in waste wood processing plants, in biomass processing plants and for various grinding tasks in the field of recycling.

DIMENSIONS

Chassis	Static
Total weight (kg)	Approx. 28000
Length (mm)	10941
Width (mm)	2626
Height (mm)	3832
Transport width (mm)	2626
Transport height (mm)	2932
Transport length (mm)	10941

DRIVE

Engine type	AC-motor frequency driven
Make	ABB
Motor power (kW / PS)	450 / 611
Installed power (kW)	470
Torque (Nm)	2800

DISCHARGE CONVEYOR

Length (mm)	6000
Width (mm)	1600
Belt speed (m/s)	0,5
Loading height (mm)	3046 using a 900 mm steel framework

FLAIL DRUM

Width (mm)	1750
Diameter (mm)	1120
Speed (min-1)	1000
Number of Flail teeth	36

INFEED HOPPER

Loading width (mm)	5711
Loading height (mm)	3046



Advantages

- Main drive, scraper floor and feed-in drum are precisely coordinated and controlled by frequency converter thus ensuring an optimal utilization of the machine and a continuous material infeed by direct, electric load-sensing of the drive units.
- Flail rows topologically overlap for a better grinding result
- Free swinging flails, retracting in case of contaminants
- Quick-changing system for the baskets
- Optimized safety system with sensor-less standstill monitoring
- Easy transport, because the machine is delivered ready assembled with base frame and discharge conveyor in one.
- Quick mounting and commissioning thanks to BUS control. Therefore reduction of the required cable routing.

SHREDDER NZ 180 VE



Applications

The stationary grinder NZ 180 VE can be used to grind biowaste and green waste in composting plants, for different qualities of wood in waste wood processing plants and in biomass processing plants and for various grinding tasks in the field of recycling.



DIMENSIONS

Chassis	Static
Total weight (kg)	17200
Length (mm)	4780
Width (mm)	2730
Height (mm)	1970

DRIVE

Engine type	electric
Make	AC-motor
Motor power (kW / PS)	250 / 340

ROLLER

Number of rollers	1
Roller Length (mm)	1750
Roller Diameter (mm)	1120
Roller Speed (min-1)	1000

Advantages

- Powerful and robust V-belt drive with AC motor. The motor is easily accessible from two sides
- Large feeding hopper with electrically driven scraper floor and infeed roller for controlled and problem-free feeding of the flail drum
- The flails grind the material, achieving a defined grain size by means of the mesh size of the chosen grinding basket, the flail tips retreat automatically in case of large unshreddable contaminants in order to protect the machine and to reduce the tool wear
- The quick-changing baskets, the patented flail tip fixings and the good accessibility from outside permit a quick replacement of the grinding tools
- Very good separation of metal pieces from the material compounds thanks to the flail principle

SHREDDER-GRINDER DZ 750 E



Applications

The multi-purpose shredders of the DOPPSTADT DZ series process old growth, root wood, green waste, bulky stem wood and much more. The combination of a slow-going, contaminant-resistant pre-shredding system and a downstream high-speed post-processing system makes for the perfect solution for the most demanding shredding tasks.



DIMENSIONS

Chassis	Semi-trailer
Total weight (kg)	46000
Length (mm)	18516
Width (mm)	2550
Height (mm)	4100
Transport width (mm)	2550
Transport height (mm)	3980
Transport length (mm)	13550

DRIVE

Engine type	electrical
Make	Three-phase motor
Motor power (kW / PS)	450 /

DISCHARGE CONVEYOR

Width (mm)	1500
Length (mm)	7000
Height (mm)	4000

FLAIL DRUM

Width (mm)	1750
Diameter (mm)	1100
Speed (min-1)	1080
Number of Flail teeth	36

ROLLER

Number of rollers	1
Roller Length (mm)	3000
Roller Diameter (mm)	600
Roller Speed (min-1)	25/21
Number of roller teeth	21/42
Loading height (mm)	3000

Advantages

- Shredding and grinding in one machine
- Production of finished goods in one machine
- Easy one-man operation
- Contaminant-resistant high-speed shredding
- Application of very strong magnets

SHREDDER-GRINDER DZ 750



Applications

The multi-purpose shredders of the DOPPSTADT DZ series process old growth, root wood, green waste, bulky stem wood and much more. The combination of a slow-going, contaminant-resistant pre-shredding system and a downstream high-speed post-processing system makes for the perfect solution for the most demanding shredding tasks.



Advantages

- Shredding and grinding in one machine
- Production of finished goods in one machine
- Easy and simple one-man operation via standard display
- Contaminant-resistant high-speed shredding
- Metal separation by two overband magnets (additional magnetic roll optionally available)
- Drive of all belts via a load-sensing pump

DIMENSIONS

Chassis	Semi-trailer
Total weight (kg)	47000
Length (mm)	18400
Width (mm)	2550
Height (mm)	4100
Transport width (mm)	2550
Transport height (mm)	3980
Transport length (mm)	13410

DRIVE

Engine type	Volvo diesel engine
Make	Volvo TAD 1672 VE
Exhaust level	EUROMOT IV / Tier IV final
Motor power (kW / PS)	515 / 700
Fuel tank (l)	1070
Torque (Nm)	3200

Engine type 2	Volvo TAD 1643 VE-B
Exhaust level	EUROMOT II B / Tier II
Motor power (kW / PS)	565 / 768
Torque (Nm)	3260

DISCHARGE CONVEYOR

Width (mm)	1500
Length (mm)	7000
Height (mm)	4000

FLAIL DRUM

Width (mm)	1750
Diameter (mm)	1100
Speed (min-1)	1080

ROLLER

Roller Length (mm)	3000
Roller Diameter (mm)	600
Roller Speed (min-1)	20 - 25

SHREDDER-GRINDER DZ 750 K



Applications

The multi-purpose shredders of the DOPPSTADT DZ series process old growth, root wood, green waste, bulky stem wood and much more. The combination of a slow-going, contaminant-resistant pre-shredding system and a downstream high-speed post-processing system makes for the perfect solution for the most demanding shredding tasks.



DIMENSIONS

Chassis	Steel-tracks
Total weight (kg)	53000
Length (mm)	17430
Width (mm)	3000
Height (mm)	4060
Transport width (mm)	3000
Transport height (mm)	3690
Transport length (mm)	13500

DRIVE

Engine type	Diesel engine
Make	Mercedes Benz OM 502 LA
Exhaust level	EUROMOT III A
Motor power (kW / PS)	480 / 652
Fuel tank (l)	900

DISCHARGE CONVEYOR

Width (mm)	1500
Length (mm)	6000
Belt speed (m/s)	2,1
Height (mm)	4100

FLAIL DRUM

Width (mm)	1750
Diameter (mm)	1100
Speed (min-1)	970-1140 rpm (dep. on engine speed)
Number of Flail teeth	36

ROLLER

Number of rollers	1
Roller Length (mm)	3000
Roller Diameter (mm)	600
Roller Speed (min-1)	25 - 31
Number of roller teeth	42
Loading height (mm)	3060
Loading width (mm)	4060

Advantages

- Shredding and grinding in one machine
- Fe-free finished goods
- Easy one-man operation
- Contaminant resistant fine shredding
- Metal separation by two overband magnets (additional magnet optionally available)

SMART SCREENING

TROMMEL LINE
STAR SCREEN LINE
SPLITTER LINE
FLATFLEX LINE



TROMMEL LINE

DRUM SCREEN BASIC 518



Applications

Like all Doppstadt SM machines the BASIC 518 happily accepts waste and raw materials of all types for screening. It is equally suitable for compost, earths, light construction waste, wood, biomass, sand, and gravel.



DIMENSIONS

Chassis	1-axle yard chassis
Total weight (kg)	12000
Length (mm)	12300
Width (mm)	4485
Height (mm)	3300
Transport width (mm)	2321
Transport height (mm)	2664
Transport length (mm)	11805

DRIVE

Engine type	diesel hydraulic
Make	CAT C 2.2 Powerpack
Exhaust level	EUROMOT III A / Tier 4i
Motor power (kW / PS)	36,3 / 49,4
Fuel tank (l)	150
Torque (Nm)	140 Nm at 1800 rpm

DISCHARGE CONVEYOR

Width (mm)	1200
Length (mm)	10000 (Total length incl. lower band)
Belt speed (m/s)	1,5
Height (mm)	2150

DISCHARGE CONVEYOR SIDE

Width (mm)	800
Length (mm)	4000
Belt speed (m/s)	1,2
Height (mm)	2015

SCREEN DRUM

Diameter (mm)	1800
Length (mm)	4700
Mesh size (mm)	8 - 100
Mesh type	square or round
Drum wall thickness (mm)	6 bis 10
Drum speed (min-1)	0-21
Screening area (m²)	22,5

Advantages

- Quick-change system for screen drum, its modular construction allows for the use of the reliable screen drums as applied in the other SM 518 screen solutions.
- Large 4 m³ feed hopper, only 2.8 m loading height
- Exchangeable rear conveyor for right- or left-sided material discharge
- Center-based operational concept for easy handling: sparse electrical and manual set-up options for speed of conveyor belt, conveyor base and screen drum
- Comfortable, service-friendly access to machine components
- Diesel or electrohydraulic drive option available
- 1-axle-based yard chassis for unrestricted mobility, even under challenging surrounding conditions
- No-limits flexibility: transport on flatbed truck or in in a standard 40"-High-Cube maritime container

DRUM SCREEN SM 414



Applications

Like all DOPPSTADT SM machines the SM 414 happily accepts waste and raw materials of all types for screening. It is equally suitable for compost, earths, light construction waste, wood, biomass, sand, and gravel.



Advantages

- Feeding hopper with just 2,6 m load height and 3 m³ holding capacity
- Low operational costs
- Compact dimensions for flexible operation and easy road transportation
- Hydraulic load sensing control for maximum throughput
- No tools needed for trommel changing

DIMENSIONS

Chassis	2-axle-trailer
Total weight (kg)	10500
Length (mm)	12500
Width (mm)	5000
Height (mm)	3300
Transport width (mm)	2300
Transport height (mm)	3750
Transport length (mm)	10500

DRIVE

Engine type	diesel-hydraulic
Make	Caterpillar C 2.2
Exhaust level	EUROMOT IIIA
Motor power (kW / PS)	30 / 41
Fuel tank (l)	100
Torque (Nm)	143

DISCHARGE CONVEYOR

Width (mm)	800
Length (mm)	3000
Belt speed (m/s)	0,9
Height (mm)	900 - 2200

DISCHARGE CONVEYOR SIDE

Width (mm)	600
Length (mm)	3000
Belt speed (m/s)	2,9
Height (mm)	1750

SCREEN DRUM

Diameter (mm)	1400
Length (mm)	4200
Mesh size (mm)	8 bis 100
Mesh type	square or round
Drum wall thickness (mm)	6 bis 10
Drum speed (min-1)	0-21
Screening area (m ²)	15,9

DRUM SCREEN SM 414 K



Applications

Like all DOPPSTADT SM machines the SM 414 K happily accepts waste and raw materials of all types for screening. It is equally suitable for compost, earths, light construction waste, wood, biomass, sand, and gravel.



Advantages

- Feeding hopper with 3 m³ holding capacity
- 5m long discharging transport belts (optional)
- Trommel changing in 15 minutes, no tools needed
- Cable remote control for easy machine maneuvering
- Compact dimensions, extremely mobile, good traction capability on any surface

DIMENSIONS

Chassis	Steel-tracks
Total weight (kg)	12000
Length (mm)	10600 / 12400
Width (mm)	5000 / 6500
Height (mm)	3300 / 3400
Transport width (mm)	2500
Transport height (mm)	3400
Transport length (mm)	9850 / 9950

DRIVE

Engine type	diesel engine
Make	Caterpillar C 2.2
Exhaust level	EUROMOT IIIA
Motor power (kW / PS)	34 / 46
Fuel tank (l)	100
Torque (Nm)	143

DISCHARGE CONVEYOR

Width (mm)	800
Length (mm)	3000
Belt speed (m/s)	1
Height (mm)	1000 - 2200

DISCHARGE CONVEYOR SIDE

Width (mm)	600
Length (mm)	3000
Belt speed (m/s)	2,4
Height (mm)	1750

SCREEN DRUM

Diameter (mm)	1400
Length (mm)	4200
Mesh size (mm)	8 bis 100
Mesh type	square or round
Drum wall thickness (mm)	6 bis 10
Drum speed (min-1)	0-21
Screening area (m ²)	15,9

DRUM SCREEN SM 518 PLUS



Applications

Like all Doppstadt SM machines the SM 518 Plus happily accepts waste and raw materials of all types for screening. It is equally suitable for compost, earths, light construction waste, wood, biomass, sand, and gravel.



Advantages

- Fast changing system for the screening unit, trommel or star screen insert available
- Large 5 m³ feeding hopper with just 2,8 m loading height
- 5,5 m long output conveyors with 3,5 m drop-off height
- Electronic load sensing control for perfect screening at optimized throughput
- Compact transport dimensions for excellent mobility

DIMENSIONS

Chassis	2-axle-trailer
Total weight (kg)	17000
Length (mm)	15000
Width (mm)	7000
Height (mm)	3800
Transport width (mm)	2550
Transport height (mm)	4000
Transport length (mm)	11000

DRIVE

Engine type	diesel hydraulic
Make	DEUTZ TCD 2.9 L4
Exhaust level	EUROMOT III B / Tier 4f
Motor power (kW / PS)	55 / 75
Fuel tank (l)	300
Torque (Nm)	max. 300

DISCHARGE CONVEYOR

Width (mm)	800
Length (mm)	5500
Belt speed (m/s)	1,1
Height (mm)	up to 3500

DISCHARGE CONVEYOR SIDE

Width (mm)	800
Length (mm)	5500
Belt speed (m/s)	2,3
Height (mm)	up to 3500

SCREEN DRUM

Diameter (mm)	1800
Length (mm)	4700
Mesh size (mm)	8 - 100
Mesh type	square or round
Drum wall thickness (mm)	6 bis 10
Drum speed (min-1)	0-21
Screening area (m ²)	22,5

DRUM SCREEN SM 620 PLUS



Applications

Like all Doppstadt SM machines the SM 620 Plus happily accepts waste and raw materials of all types for screening. It is equally suitable for compost, earths, light construction waste, wood, biomass, sand, and gravel.



DIMENSIONS

Chassis	2-axle-trailer
Total weight (kg)	19000
Length (mm)	15660
Width (mm)	6500
Height (mm)	4000
Transport width (mm)	2550
Transport height (mm)	4000
Transport length (mm)	11900

DRIVE

Engine type	diesel hydraulic
Make	DEUTZ TCD 3.6 L4
Exhaust level	EUROMOT IV / Tier 4 final
Motor power (kW / PS)	90 / 122 (@ 2000 rpm)
Fuel tank (l)	300
Torque (Nm)	max. 480 bei 1600 rpm

DISCHARGE CONVEYOR

Width (mm)	1000
Length (mm)	5500
Belt speed (m/s)	1,6
Height (mm)	3500

DISCHARGE CONVEYOR SIDE

Width (mm)	1000
Length (mm)	5500
Belt speed (m/s)	3,1
Height (mm)	3500

SCREEN DRUM

Diameter (mm)	2000
Length (mm)	5500
Mesh size (mm)	8 bis 100
Mesh type	square or round
Drum wall thickness (mm)	6 bis 10
Drum speed (min-1)	0-20
Screening area (m ²)	30,2

Advantages

- Fast changing system for the screening unit, operation with trommel or 6 m³ star screen insert possible
- Large 5 m³ feeding hopper with low feeding height of 2,9 m
- Load sensing control for optimized screening result
- Three additional hydraulic connections for operation of various optional equipment
- Economic fuel consumption, low operational costs, high throughput capacity

DRUM SCREEN SM 620 K PLUS



Applications

Like all Doppstadt SM machines the SM 620 K Plus happily accepts waste and raw materials of all types for screening. It is equally suitable for compost, earths, light construction waste, wood, biomass, sand, and gravel.



Advantages

- Heavy-duty tracklaying chassis, self-propelled via remote control unit
- Large feeding hopper capacity with over 7 m³ (9 yd³) volume, Loading height 2,9 m (9,5 ft) only
- Load-sensing system: among others, allows simultaneous driving and working
- Track chassis with lifting kinematic for optimum machine leveling on uneven ground
- Fast changing system for trommel or star screen insert
- Diesel engine with low fuel consumption - exhaust standard Tier 4 final, low operation costs, highest throughput capacity
- Extensive health and safety kit, complete machine control placed in the rear
- Additional hydraulic connections to operate numerous optional equipment

DIMENSIONS

Chassis	Steel-tracks
Total weight (kg)	24000
Length (mm)	15350
Width (mm)	6950
Height (mm)	3400
Transport width (mm)	3000
Transport height (mm)	3400
Transport length (mm)	12730

DRIVE

Engine type	diesel-hydraulic
Make	DEUTZ TCD 3.6 L4
Exhaust level	EUROMOT IV / Tier 4 final
Motor power (kW / PS)	90 / 122 (@ 2000 rpm)
Fuel tank (l)	400
Torque (Nm)	max. 480 bei 1600 rpm

DISCHARGE CONVEYOR

Width (mm)	1000
Length (mm)	5500
Belt speed (m/s)	1,6
Height (mm)	3300

DISCHARGE CONVEYOR SIDE

Width (mm)	1000
Length (mm)	5250
Belt speed (m/s)	3,1
Height (mm)	3250

SCREEN DRUM

Diameter (mm)	2000
Length (mm)	5500
Mesh size (mm)	8 bis 100
Mesh type	square or round
Drum wall thickness (mm)	6 bis 10
Drum speed (min-1)	0-20
Screening area (m ²)	30,2

DRUM SCREEN SM 620 SA PLUS



Applications

Like all Doppstadt SM machines the SM 620 SA Plus happily accepts waste and raw materials of all types for screening. It is equally suitable for compost, earths, light construction waste, wood, biomass, sand, and gravel.



DIMENSIONS

Chassis	Semi-trailer
Total weight (kg)	24000
Length (mm)	15500
Width (mm)	6900
Height (mm)	4000
Transport width (mm)	2550
Transport height (mm)	4000
Transport length (mm)	11700

DRIVE

Engine type	diesel-hydraulic
Make	Deutz TCD 3.6 L4
Exhaust level	EUROMOT IV / Tier 4 final
Motor power (kW / PS)	90 / 122 (@ 2000 rpm)
Fuel tank (l)	400
Torque (Nm)	max. 480 bei 1600 rpm

DISCHARGE CONVEYOR

Width (mm)	1000
Length (mm)	5,5 m
Belt speed (m/s)	1,6
Height (mm)	up to 3500

DISCHARGE CONVEYOR SIDE

Width (mm)	1000
Length (mm)	5500
Belt speed (m/s)	3,1
Height (mm)	up to 3500

SCREEN DRUM

Diameter (mm)	2000
Length (mm)	5500
Mesh size (mm)	8 bis 100
Mesh type	square or round
Drum wall thickness (mm)	6 bis 10
Drum speed (min-1)	0 - 20
Screening area (m ²)	30,2

Advantages

- Quick exchange of screening unit, operates with trommel or star screen insert
- Large 7 m³ feeding hopper with low feeding height of 2,9 m
- Electronic load sensing control for optimized screening results
- Three additional hydraulic connections for simultaneous operation of additional equipment
- Low operational costs and high throughput capacity

DRUM SCREEN SM 720 SA PLUS



Applications

Like all Doppstadt SM machines the SM 720 SA Plus happily accepts waste and raw materials of all types for screening. It is equally suitable for compost, earths, light construction waste, wood, biomass, sand, and gravel.



Advantages

- Maximum throughput capacity at high- quality screening results due to extra large screening area
- Unique load sensing feeder control makes sure that the capacity of the machine is used at the optimum in safe operation without interruption.
- Large size feeding hopper and extra long output conveyors allow feeding of the machine with large front loaders.
- Low operation costs due to powerful drive at low fuel consumption.
- No limitation for road transport, short set-up time.

DIMENSIONS

Chassis	Semi-trailer
Total weight (kg)	24000
Length (mm)	17000
Width (mm)	6900
Height (mm)	4000
Transport width (mm)	2550
Transport height (mm)	4000
Transport length (mm)	13250

DRIVE

Engine type	diesel engine
Make	Deutz TCD 3.6 L4
Exhaust level	EUROMOT IV / Tier 4 final
Motor power (kW / PS)	90 / 122 (@ 2000 rpm)
Fuel tank (l)	400
Torque (Nm)	max. 480 bei 1600 rpm

DISCHARGE CONVEYOR

Width (mm)	1000
Length (mm)	5500
Belt speed (m/s)	1,6
Height (mm)	3500

DISCHARGE CONVEYOR SIDE

Width (mm)	1000
Length (mm)	5500
Belt speed (m/s)	3,1
Height (mm)	3500

SCREEN DRUM

Diameter (mm)	2000
Length (mm)	7100
Mesh size (mm)	8 bis 100
Mesh type	square or round
Drum wall thickness (mm)	6 bis 10
Drum speed (min-1)	0-20
Screening area (m ²)	38,8

DRUM SCREEN SST 518



Applications

The screening solutions of the Doppstadt SM series screen waste and raw materials such as compost, soil, construction waste, domestic waste, industrial waste, plastic, glass, paper, wood, biomass, sand, gravel, scrap or slag. The screens are perfectly suited for combined applications e. g. together with Doppstadt shredders or windsifters.



DIMENSIONS

Chassis	Static
Total weight (kg)	8100
Length (mm)	6863
Width (mm)	2450
Height (mm)	3188

DRIVE

Engine type	Electrical
Make	Three-Phase Motor
Motor power (kW / PS)	11 / 15

SCREEN DRUM

Diameter (mm)	1800
Length (mm)	4700
Mesh size (mm)	bauseits
Mesh type	bauseits
Drum speed (min-1)	bauseits
Screening area (m ²)	bauseits

Advantages

- Very robust frame construction based on thick-walled profile tubes
- Speed-controlled direct drive with standard gear motor, therefore perfectly adjustable to screening process and quality requirements
- High screening throughput thanks to guided material processing inside the drum
- Wide range of possible applications thanks to combinable lower belts and the option of various mesh sizes
- Encased machine housing for zero-emission operation in connection with attachable exhaust device

DRUM SCREEN SST 720



Applications

The screening solutions of the Doppstadt SM series screen waste and raw materials such as compost, soil, construction waste, domestic waste, industrial waste, plastic, glass, paper, wood, biomass, sand, gravel, scrap or slag. The screens are perfectly suited for combined applications e. g. together with Doppstadt shredders or windsifters.



Advantages

- Easy accessibility thanks to large protection doors
- Very robust frame construction based on thick-walled profile tubes
- Speed-controlled direct drive with standard gear motor, therefore perfectly adjustable to screening process and quality requirements
- High screening throughput thanks to guided material processing inside the drum
- Horizontal machine installation, enables space-saving set-up in plant projects

DIMENSIONS

Chassis	Static
Total weight (kg)	13000
Length (mm)	13343
Width (mm)	2526
Height (mm)	3388

DRIVE

Engine type	Electrical
Make	Three-Phase Motor
Motor power (kW / PS)	22 / 30

SCREEN DRUM

Diameter (mm)	2000
Length (mm)	7000
Mesh size (mm)	user-specific
Mesh type	squared, round
Screening area (m²)	approx. 25

DRUM SCREEN SST 725



Applications

The screening solutions of the Doppstadt SM series screen waste and raw materials such as compost, soil, construction waste, domestic waste, industrial waste, plastic, glass, paper, wood, biomass, sand, gravel, scrap or slag. The screens are perfectly suited for combined applications e. g. together with Doppstadt shredders or windsifters.



DIMENSIONS

Chassis	Static
Total weight (kg)	approx. 16000
Length (mm)	9343
Width (mm)	3000
Height (mm)	3273

DRIVE

Engine type	Electrical
Make	Spur Gear Motor
Motor power (kW / PS)	2 x 15 / 2 x 20
Torque (Nm)	2690

SCREEN DRUM

Diameter (mm)	2500
Length (mm)	7000
Mesh size (mm)	kundenspezifisch
Screening area (m²)	47,9

Advantages

- Easy accessibility thanks to large protection doors
- Very robust frame construction based on profile tubes
- Speed-controlled direct drive with standard gear motor, therefore perfectly adjustable to screening process and quality requirements
- High screening throughput thanks to guided material processing inside the drum
- Horizontal machine installation, enables space-saving set-up in plant projects

DRUM SCREEN SST 1025



Applications

The screening solutions of the Doppstadt SM series screen waste and raw materials such as compost, soil, construction waste, domestic waste, industrial waste, plastic, glass, paper, wood, biomass, sand, gravel, scrap or slag. The screens are perfectly suited for combined applications e. g. together with Doppstadt shredders or windsifters.



Advantages

- Easy accessibility thanks to large protection doors
- Very robust frame construction based on profile tubes
- Speed-controlled direct drive with standard gear motor, therefore perfectly adjustable to screening process and quality requirements
- High screening throughput thanks to guided material processing inside the drum
- Horizontal machine installation, enables space-saving set-up in plant projects

DIMENSIONS

Chassis	Static
Total weight (kg)	22500
Length (mm)	12300
Width (mm)	3000
Height (mm)	3260

DRIVE

Engine type	Electrical
Make	Spur Gear Motor
Motor power (kW / PS)	4 x 11 / 4 x 15

SCREEN DRUM

Diameter (mm)	2500
Length (mm)	10000
Mesh size (mm)	user-specific
Mesh type	squared, round
Screening area (m²)	63,8

DRUM SCREEN SST 1525



Applications

The screening solutions of the Doppstadt SM series screen waste and raw materials such as compost, soil, construction waste, domestic waste, industrial waste, plastic, glass, paper, wood, biomass, sand, gravel, scrap or slag. The screens are perfectly suited for combined applications e. g. together with Doppstadt shredders or windsifters.



Advantages

- Easy accessibility thanks to large protection doors
- Very robust frame construction based on profile tubes
- Speed-controlled direct drive with standard gear motor, therefore perfectly adjustable to screening process and quality requirements
- High screening throughput thanks to guided material processing inside the drum
- Horizontal machine installation, enables space-saving set-up in plant projects

DIMENSIONS

Chassis	Static
Total weight (kg)	29500
Length (mm)	17600
Width (mm)	3000
Height (mm)	3260

DRIVE

Engine type	Electrical
Make	Spur Gear Motor
Motor power (kW / PS)	4 x 15 / 4 x 20

SCREEN DRUM

Diameter (mm)	2500
Length (mm)	2 x 7500
Mesh size (mm)	user-specific
Mesh type	squared, round
Screening area (m²)	87

DRUM SCREEN SM 518 A



Applications

The screening solutions of the Doppstadt SM series screen waste and raw materials such as compost, soil, construction waste, domestic waste, industrial waste, plastic, glass, paper, wood, biomass, sand, gravel, scrap or slag. The screens are perfectly suited for combined applications e. g. together with Doppstadt shredders or windsifters.



Advantages

- Easy accessibility thanks to open construction
- Very robust frame construction based on profile tubes
- Speed-controlled direct drive with standard gear motor, therefore perfectly adjustable to screening process and quality requirements
- High screening throughput thanks to guided material processing inside the drum
- Screening drums of the mobile SM series are seamlessly applicable

DIMENSIONS

Chassis	Static
Total weight (kg)	4800
Length (mm)	6337
Width (mm)	2600
Height (mm)	2536

DRIVE

Engine type	Electrical
Make	Spur Gear Motor
Motor power (kW / PS)	11 / 15

SCREEN DRUM

Diameter (mm)	1800
Length (mm)	4700
Mesh size (mm)	bauseits
Mesh type	bauseits
Drum speed (min-1)	bauseits
Screening area (m ²)	bauseits

DRUM SCREEN SM 518 F



Applications

The screening solutions of the Doppstadt SM series screen waste and raw materials such as compost, soil, construction waste, domestic waste, industrial waste, plastic, glass, paper, wood, biomass, sand, gravel, scrap or slag. The screens are perfectly suited for combined applications e. g. together with Doppstadt shredders or windsifters.



Advantages

- Built-on bunker with capacity of 4.5 m³
- High screening throughput thanks to guided material processing inside the drum
- Horizontal machine installation, enables space-saving set-up in plant projects
- Smooth and quiet operation of the drum using Vulkollan® coated castors
- Easy machine operation via manual control and/or integration into higher level master control system

DIMENSIONS

Chassis	Static
Total weight (kg)	7600
Length (mm)	9186
Width (mm)	2500
Height (mm)	2742

DRIVE

Engine type	Electrical
Make	Spur Gear Motor
Motor power (kW / PS)	11 / 15

SCREEN DRUM

Diameter (mm)	1800
Length (mm)	4700
Mesh size (mm)	bauseits
Mesh type	bauseits
Drum speed (min-1)	bauseits
Screening area (m ²)	bauseits

DRUM SCREEN SM 620 A



Applications

The screening solutions of the Doppstadt SM series screen waste and raw materials such as compost, soil, construction waste, domestic waste, industrial waste, plastic, glass, paper, wood, biomass, sand, gravel, scrap or slag. The screens are perfectly suited for combined applications e. g. together with Doppstadt shredders or windsifters.



Advantages

- Easy accessibility thanks to open construction
- Very robust frame construction based on profile tubes
- Speed-controlled direct drive with standard gear motor, therefore perfectly adjustable to screening process and quality requirements
- High screening throughput thanks to guided material processing inside the drum
- Screening drums of the mobile SM series are seamlessly applicable

DIMENSIONS

Chassis	Static
Total weight (kg)	3900
Length (mm)	6845
Width (mm)	2445
Height (mm)	2915

DRIVE

Engine type	Electrical
Make	Bevel Gear Motor
Motor power (kW / PS)	15 / 20

SCREEN DRUM

Diameter (mm)	2000
Length (mm)	5440
Mesh size (mm)	user-specific
Mesh type	squared, round
Drum speed (min-1)	bauseits
Screening area (m²)	ca. 30,1

STAR SCREEN DST 512



Applications

The DST star screens are adapted to suit the task of screening green waste and compost.



DIMENSIONS

Chassis	Static
Total weight (kg)	3400
Length (mm)	5100
Width (mm)	2230
Height (mm)	1100

DRIVE

Engine type	Electrical
Make	Spur Gear Motor
Motor power (kW / PS)	2 x 7,5 /

Advantages

- Elliptically shaped stars for better screening quality and easy transport
- Various, alternating shaft speeds
- Low-wear metal-tipped, elastic star fingers
- Screening bed operating at various speeds

STAR SCREEN DST 712



Applications

The DST star screens are adapted to suit the task of screening green waste and compost.

DIMENSIONS

Chassis	Static
Total weight (kg)	4800
Length (mm)	7455
Width (mm)	2150
Height (mm)	1100

DRIVE

Engine type	Electrical
Make	Spur Gear Motor
Motor power (kW / PS)	3 x 7,5 /



Advantages

- Elliptically shaped stars for better screening quality and easy transport
- Various, alternating shaft speeds
- Low-wear metal-tipped, elastic star fingers
- Screening bed operating at various speeds

SPLITTER H2 - SYSTEM



Applications

Like all machines belonging to this DOPPSTADT series the SPLITTER H2 can easily cope with a variety of materials. It is perfectly suited for earths, construction waste, all kinds of wood, biomass and scrap metal.

DIMENSIONS

Chassis	Hook-lift
Total weight (kg)	9700
Length (mm)	11105
Width (mm)	2563
Height (mm)	3002
Transport width (mm)	2542
Transport height (mm)	2642
Transport length (mm)	8111

DRIVE

Engine type	Dieselgenerator
Make	diesel-electric 30 kVA Perkins Stage 3A
Exhaust level	Tier 3 A
Motor power (kW / PS)	24 / 33
Fuel tank (l)	240

LOWER SCREENING DECK

Length (mm)	2000 - 4000
Width (mm)	2000



Advantages

- Modular set-up, convenient adjustment of equipment, depending on application
- Mobile hooklift, transport dimensions matching various country-specific requirements
- High throughput on compact screening area
- Easy operation via remote control, easy maintenance
- Electrical drives with hybrid functions , such as diesel-electric and grid connectivity

SPLITTER UNIT 325



Applications

Like all machines belonging to this DOPPSTADT series the stationary SPLITTER UNIT can easily cope with a variety of materials. It is perfectly suited for commercial and industrial waste, wood, and green waste. For special applications the machine can be adapted to process scrap metal and slag as well.

DIMENSIONS

Chassis	Static
Total weight (kg)	2800
Length (mm)	6300
Width (mm)	2900
Height (mm)	1500
Transport width (mm)	2900
Transport height (mm)	1500
Transport length (mm)	6300

DRIVE

Engine type	electric
Make	Gearmotors
Motor power (kW / PS)	9,5 /

LOWER SCREENING DECK

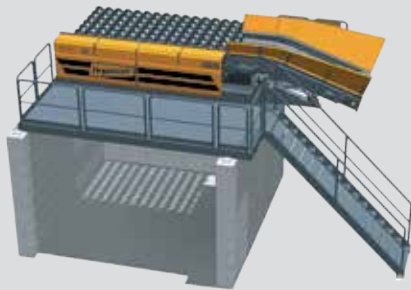
Length (mm)	3000
Width (mm)	2500



Advantages

- Separation of less readily screenable material, including adjustment of screen gap
- Almost clog-free operation thanks to self-cleaning process
- Low maintenance costs due to robust, simple set-up
- Quick and easy exchange of screening deck modules serving a variety of applications
- Screening deck available in different lengths: 3,000, 4,000 and 6,000 mm

SPLITTER UNIT 425



Applications

Like all machines belonging to this DOPPSTADT series the stationary SPLITTER UNIT can easily cope with a variety of materials. It is perfectly suited for commercial and industrial waste, wood, and green waste. For special applications the machine can be adapted to process scrap metal and slag as well.

DIMENSIONS

Chassis	Static
Total weight (kg)	6700
Length (mm)	7600
Width (mm)	2900
Height (mm)	1500
Transport width (mm)	2900
Transport height (mm)	1500
Transport length (mm)	7600

DRIVE

Engine type	electric
Make	Gearmotors
Motor power (kW / PS)	16,5 /

LOWER SCREENING DECK

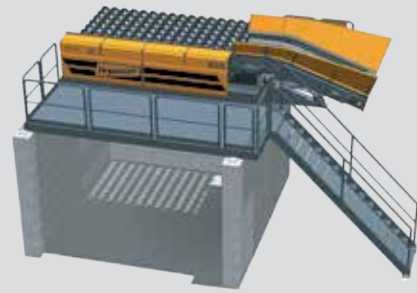
Length (mm)	4000
Width (mm)	2500



Advantages

- Separation of less readily screenable material, including adjustment of screen gap
- Almost clog-free operation thanks to self-cleaning process
- Low maintenance costs due to robust, simple set-up
- Quick and easy exchange of screening deck modules serving a variety of applications
- Screening deck available in different lengths: 3,000, 4,000 and 6,000 mm

SPLITTER UNIT 625



Applications

Like all machines belonging to this DOPPSTADT series the stationary SPLITTER UNIT can easily cope with a variety of materials. It is perfectly suited for commercial and industrial waste, wood, and green waste. For special applications the machine can be adapted to process scrap metal and slag as well.



DIMENSIONS

Chassis	Static
Total weight (kg)	9400
Length (mm)	9600
Width (mm)	2900
Height (mm)	1500
Transport width (mm)	2900
Transport height (mm)	1500
Transport length (mm)	9600

DRIVE

Engine type	electric
Make	Gearmotors
Motor power (kW / PS)	22 /

LOWER SCREENING DECK

Length (mm)	6000
Width (mm)	2500

Advantages

- Separation of less readily screenable material, including adjustment of screen gap
- Almost clog-free operation thanks to self-cleaning process
- Low maintenance costs due to robust, simple set-up
- Quick and easy exchange of screening deck modules serving a variety of applications
- Screening deck available in different lengths: 3,000, 4,000 and 6,000 mm

STAR SCREEN HS 401 SELECTOR



Applications

Combined with the pre-shredder DW 3060 Type F the HS 401 Selector is a safe bet for the screening of many types of wooden biomass waste and raw material. It is equally suitable for pre-shredded biomass out of wood waste, green waste, stumps and roots.



DIMENSIONS

Chassis	Hook-lift
Total weight (kg)	approx. 6500
Length (mm)	approx. 8700
Width (mm)	approx. 6700
Height (mm)	approx. 4900
Transport width (mm)	2550
Transport height (mm)	2900
Transport length (mm)	6700

DRIVE

Engine type	hydraulic connetion 70 l/min from DW
Make	hydraulic

UPPER SCREENING DECK

Width (mm)	1300
Length (mm)	3500

Advantages

- Simple, robust construction, no electrics, powered by pre-shredder via additional hydraulic connection 70 l/min
- Integrated conveyor returns oversize material to pre-shredder
- Defined fine fraction, variable mesh size by way of rpm adjustment or quick change of screening deck
- Compact tranport dimensions, short set-up time for transport and operational readiness
- Low operational costs, minimum production costs per ton of final product

STAR SCREEN HS 800 SELECTOR



Applications

The HS 800 is designed for combined operation with the pre-shredder DW 3060 Type F (package Size M or Size S). The machine is suitable for the screening of overzive material from pre-shredded waste wood, roots or green waste.



DIMENSIONS

Chassis	Hook-lift
Total weight (kg)	approx. 8700
Length (mm)	approx. 16000
Width (mm)	approx. 2750
Height (mm)	approx. 4500
Transport width (mm)	2550
Transport height (mm)	2700
Transport length (mm)	7900

DRIVE

Engine type	hydraulic connetion from DW
Make	hydraulic

DISCHARGE CONVEYOR

Width (mm)	1200
Length (mm)	approx. 5000
Height (mm)	approx. 3800

UPPER SCREENING DECK

Width (mm)	1400
Length (mm)	5900

Advantages

- Simple, robust construction, no electrics, powered by pre-shredder via additional hydraulic connection from pre-shredder.
- Integrated conveyor returns oversize material to pre-shredder
- Defined final product, variable mesh size by way of rpm adjustment or exchange of the whole screening unit
- Compact transport dimensions, short set-up time for transport and operational readiness
- Low operational costs, minimum production costs per t of finished goods

SPLITTER SWS 800



Applications

The SWS technology provides the perfect separation technique for a variety of applications involving input materials which are particularly difficult to screen. The SWS system can be used for the processing of commercial waste, mixed construction waste, domestic/biowaste, old growth timber, compost (coarse separation), etc.



DIMENSIONS

Chassis	Hook-lift
Total weight (kg)	ca. 10000
Length (mm)	ca. 16000
Width (mm)	ca. 2750
Height (mm)	ca. 4500
Transport width (mm)	2550
Transport height (mm)	2700
Transport length (mm)	7900

DRIVE

Engine type	hydraulic
Make	Powered by additional hydraulic connection as used in the DW series, or optionally via separate hydraulic power unit

LOWER SCREENING DECK

Length (mm)	4000
Width (mm)	2000

Advantages

- Processing of material streams which are difficult to separate, bogging-prone and likely to cause premature wear and tear on separation equipment
- Flexible set-up of spiral shaft decks and/or star screen decks on the HS 800 chassis. Other superstructural parts may be added at will
- Application of the hydraulic additional power unit used with other Doppstadt products
- Screen deck exchange allows for the individual adaption of separating cuts
- Almost bogging- and wrapping-free separation, no bogging of mesh structures, ensures constantly high process quality
- Hook lift mobile construction, compact transport dimensions, requires little set-up time for transport
- Basic, robust construction, low-wear technology, especially when processing contaminants such as FE, NE, glass and minerals
- Maximum process reliability at minimum operating costs



SMART CHIPPING

DRUMCHIPPER LINE

DRUMCHIPPER LINE

CHIPPER DH 811



DIMENSIONS

Chassis	2-axle-trailer
Total weight (kg)	19000
Length (mm)	8249
Width (mm)	2500
Height (mm)	6099
Transport width (mm)	2500
Transport height (mm)	3846
Transport length (mm)	8249

DRIVE

Engine type	diesel engine
Make	MTU 6R1300
Exhaust level	EUROMOT IV / Tier 4 final
Motor power (kW / PS)	390 / 530
Fuel tank (l)	750
Torque (Nm)	2200 Nm at 1300 rpm

LOWER SCREENING DECK

Knifes	5
Logdiameter Hardwood (mm)	480
Logdiameter Softwood (mm)	600
Infeed height (mm)	800
Infeed width (mm)	1100
Rotor Diameter (mm)	1000
Rotor Width (mm)	1080
Loading height (mm)	1987

Applications

The precision chippers of the DH 811 series process wood slabs, log and preshredded root timber to different sizes of wood chips. The machines can handle trunk diameters up to 800 mm temporary.



Advantages

- Variable infeed speed
- Closed, robust chipping drum
- High rotor weight for constant rotation speed and evenly-shaped wood chips
- Thrower driven directly by the rotor for efficient chipping and long distance throwing
- Chipping knives with overload protection
- Changeable screens for various sizes of wood chips
- Easy setup and maintenance

CHIPPER DH 811 K



Applications

The precision chippers of the DH 811 series process wood slabs, log and preshredded root timber (separated from stones) to diferent sizes of wood chips. The machines can handle trunk diameters up to 800 mm temporary.



DIMENSIONS

Chassis	Steel-tracks
Total weight (kg)	23000
Length (mm)	7480
Width (mm)	2500
Height (mm)	5230
Transport width (mm)	2500
Transport height (mm)	3300
Transport length (mm)	6240

DRIVE

Engine type	diesel engine
Make	MTU 6R1300
Exhaust level	EUROMOT IV / Tier 4 final
Motor power (kW / PS)	390 / 530
Fuel tank (l)	750
Torque (Nm)	2460 Nm at 1300 rpm

LOWER SCREENING DECK

Knives	5
Logdiameter Hardwood (mm)	480
Logdiameter Softwood (mm)	600
Infeed height (mm)	800
Infeed width (mm)	1100
Rotor Diameter (mm)	1000
Rotor Width (mm)	1050

Advantages

- Robust track-mounted chassis, decoupled from upper carriage by way of vibration dampers; minimization of vibration
- Variable infeed speed
- high rotor weight of the closed, robust chipping drum for constant rotation speed and evenly-shaped wood chips
- Thrower driven directly by the rotor for efficit chipping and long distance throwing
- Chipping knives with overload protection
- Changeable screens for various sizes of wood chips
- Compact dimensions for easy transport on flatbed truck, high mobility and structural stability in barely passable surroundings

CHIPPER DH 811 L



Applications

The precision chippers of the DH 811 series process wood slabs, log and preshredded root timber to different sizes of wood chips. The machines can handle trunk diameters up to 800 mm temporary.



DIMENSIONS

Chassis	Truck mounted
Total weight (kg)	15700 (mounted chipper)
Length (mm)	7221
Width (mm)	2500
Height (mm)	ca. 6200
Transport width (mm)	2500
Transport height (mm)	2683 plus truck chassis
Transport length (mm)	6291

DRIVE

Engine type	diesel engine
Make	MTU 6R1300
Exhaust level	EUROMOT IV / Tier 4 final
Motor power (kW / PS)	390 / 530
Fuel tank (l)	750
Torque (Nm)	2200 Nm at 1.300 rpm

LOWER SCREENING DECK

Knives	5
Logdiameter Hardwood (mm)	480
Logdiameter Softwood (mm)	600
Infeed height (mm)	800
Infeed width (mm)	1100
Rotor Diameter (mm)	1000
Rotor Width (mm)	1080

Advantages

- Variable infeed speed
- Closed, robust chipping drum
- High rotor weight for constant rotation speed and evenly-shaped wood chips
- Thrower driven directly by the rotor for efficient chipping and long distance throwing
- Chipping knives with overload protection
- Changeable screens for various sizes of wood chips
- Easy setup and maintenance
- Suitable for various 4-axle truck configurations

CHIPPER DH 812



Applications

The precision chippers of the DH series 812 process waste wood, wood slabs, log and preshredded root timber to diferent sizes of wood chips. The machines can handle trunk diameters up to 800 mm temporary.



Advantages

- Variable infeed speed
- Closed, robust chipping drum produces evenly shaped wood chips
- High rotor weight of more than 3 t for constant rotation speed
- Thrower driven directly by the rotor for efficit chipping and long distance throwing
- Hydraulic blocking of the axle ensures stability against collapse
- Variable blade advance and easily changeable screens for high quality wood chips in sizes from P16 to P100 (G30 - G100), Protected counterknife
- Optional: wide tires for heavy terrain
- Easy setup and maintenance

DIMENSIONS	
Chassis	2-axle-trailer
Total weight (kg)	19000
Length (mm)	6360
Width (mm)	5039
Height (mm)	5834
Transport width (mm)	2539
Transport height (mm)	3929 depending on crane
Transport length (mm)	6414
DRIVE	
Engine type	Drive by PTO shaft of tractor 1 3/4' Z=20
Make	required power 250 - 370 kW
Motor power (kW / PS)	250-370 / 340-500
LOWER SCREENING DECK	
Knives	6
Logdiameter Hardwood (mm)	480
Logdiameter Softwood (mm)	600
Infeed height (mm)	950
Infeed width (mm)	1200
Rotor Diameter (mm)	1000
Rotor Width (mm)	1200
Loading height (mm)	1408
Loading width (mm)	2016

CHIPPER DH 812 LD



Applications

The precision chippers of the DH series 812 process waste wood, wood slabs, log and preshredded root timber to diferent sizes of wood chips. The machines can handle trunk diameters up to 800 mm temporary.



Advantages

- Extreme engine friendly drive concept
- Variable infeed speed
- Closed, robust chipping drum produces evenly shaped wood chips - High rotor weight of more than 3 t for constant rotation speed and evenly-shaped wood chips
- Thrower driven directly by the rotor for efficient chipping and long distance throwing
- Variable blade advance and easily changeable baskets for high quality wood chips in sizes from P16 to P100 (G30 - G100)
- Protected counterknife
- Hydraulic blocking of the axle ensures stability against collapse
- Easy setup and maintenance

DIMENSIONS	
Chassis	Truck mounted
Total weight (kg)	max. 27500
Length (mm)	8410
Transport width (mm)	2550
Transport height (mm)	4000
Transport length (mm)	84100
DRIVE	
Engine type	Direct diesel drive
Make	Mecedes Arocs 3648
Exhaust level	Euro 6
Motor power (kW / PS)	350 / 480
Engine type 2	Direct diesel drive
Make	Mecedes Arocs 3651
Exhaust level	Euro 6
Motor power (kW / PS)	375 / 510
LOWER SCREENING DECK	
Knives	6
Logdiameter Hardwood (mm)	480
Logdiameter Softwood (mm)	600
Infeed height (mm)	950
Infeed width (mm)	1200
Rotor Diameter (mm)	1000
Rotor Width (mm)	1200
Loading height (mm)	1408
Loading width (mm)	2016

CHIPPER DH 910 K



Applications

The precision chippers of the DH series process waste wood, wood slabs, log and root timber to different sizes of wood chips. The machines can handle trunk diameters up to 900 mm – be it scrap wood or trees in their entirety.



DIMENSIONS	
Chassis	Steel-tracks
Total weight (kg)	30000
Length (mm)	10340
Width (mm)	3000
Height (mm)	5960
Transport width (mm)	3000
Transport height (mm)	3382
Transport length (mm)	8680
DRIVE	
Engine type	Dieselmotor
Make	Mercedes-Benz OM 502 LA
Exhaust level	EUROMOT III A
Motor power (kW / PS)	450 / 612
Fuel tank (l)	900
Torque (Nm)	2700 Nm at 1300 rpm
LOWER SCREENING DECK	
Knives	5
Logdiameter Hardwood (mm)	680
Logdiameter Softwood (mm)	900
Infeed height (mm)	900
Infeed width (mm)	1000
Rotor Diameter (mm)	1300
Rotor Width (mm)	1000

Advantages

- Solid construction for continuous, industrial-scale operation
- Closed, robust chipping drum produces evenly shaped wood chips
- High rotor weight of > 3.5 t for constant rotation speed and evenly-shaped wood chips
- Custom-built rotor with 45 mm blade advance for economical production of very large wood chips
- Robust track drive for easy off-the-road accessibility

CHIPPER DH 910 SA



Applications

The precision chippers of the DH series 910 process waste wood, wood slabs, log and preshredded root timber to different sizes of wood chips. The machines can handle trunk diameters up to 900 mm temporary.



DIMENSIONS	
Chassis	Semi-trailer
Total weight (kg)	32000
Length (mm)	12765
Width (mm)	2500
Transport width (mm)	2500
Transport height (mm)	4000
Transport length (mm)	11115
DRIVE	
Engine type	diesel engine
Make	Volvo TAD 1643 VE-B
Exhaust level	EUROMOT II
Motor power (kW / PS)	565 / 768
Fuel tank (l)	900
Torque (Nm)	3260 Nm at 1260 rpm
Engine type 2	Volvo TAD 1672 VE
Exhaust level	EUROMOT IV / Tier 4 final
Motor power (kW / PS)	515 / 700
Fuel tank (l)	900
Torque (Nm)	3200 Nm at 1260 rpm
LOWER SCREENING DECK	
Knives	5
Logdiameter Hardwood (mm)	680
Logdiameter Softwood (mm)	900
Infeed height (mm)	900
Infeed width (mm)	1000
Rotor Diameter (mm)	1300
Rotor Width (mm)	1060
Loading height (mm)	2092

Advantages

- Solid construction for continuous, industrial-scale operation
- Variable infeed speed
- Closed, robust chipping drum - high rotor weight of more than 3.5 t for constant rotation speed and evenly-shaped wood chips
- Custom-built rotor with 45 mm blade advance for economical production of very large wood chips (P100 / G100)
- Thrower driven directly by the rotor for efficient chipping and long distance throwing
- Chipping knives with overload protection
- Changeable screens for various sizes of wood chips
- Easy setup and maintenance

CHIPPER DH 910 SA E



Applications

The precision chippers of the DH series 910 process waste wood, wood slabs, log and preshredded root timber to different sizes of wood chips. The machines can handle trunk diameters up to 900 mm temporary.



DIMENSIONS	
Chassis	Semi-trailer
Total weight (kg)	30000
Length (mm)	12765
Width (mm)	2500
Transport width (mm)	2500
Transport height (mm)	4000
Transport length (mm)	11115
DRIVE	
Engine type	electrical drive
Make	AC motor
Motor power (kW / PS)	450 / 612
LOWER SCREENING DECK	
Knives	5
Logdiameter Hardwood (mm)	680
Logdiameter Softwood (mm)	900
Infeed height (mm)	900
Infeed width (mm)	1000
Rotor Diameter (mm)	1300
Rotor Width (mm)	1060
Loading height (mm)	2092

Advantages

- Solid construction for industrial-scale continuous operation
- Variable infeed speed
- Closed, robust chipping drum - high rotor weight of more than 3.5 t for constant rotation speed and evenly-shaped wood chips
- Custom-built rotor with 45 mm blade advance for economical production of very large wood chips (P100 / G100)
- Thrower driven directly by the rotor for efficient chipping and long distance throwing
- Chipping knives with overload protection
- Changeable screens for various sizes of wood chips
- Easy setup and maintenance

CHIPPER DH 910 SA-B



Applications

The precision chippers of the DH series 910 process waste wood, wood slabs, log and preshredded root timber to different sizes of wood chips. The machines can handle trunk diameters up to 900 mm temporary.



DIMENSIONS	
Chassis	Semi-trailer
Total weight (kg)	30000
Length (mm)	ca. 20000
Width (mm)	2500
Height (mm)	5024
Transport width (mm)	2500
Transport height (mm)	4000
Transport length (mm)	12370
DRIVE	
Engine type	diesel engine
Make	Volvo TAD 1643 VE-B
Exhaust level	EUROMOT II
Motor power (kW / PS)	565 / 768
Fuel tank (l)	900
Torque (Nm)	3260 Nm at 1260 rpm
Engine type 2	Volvo TAD 1672 VE
Exhaust level	EUROMOT IV / Tier 4 final
Motor power (kW / PS)	515 / 700
Fuel tank (l)	900
Torque (Nm)	3200 Nm at 1260 rpm
LOWER SCREENING DECK	
Knives	5
Logdiameter Hardwood (mm)	700
Logdiameter Softwood (mm)	900
Infeed height (mm)	900
Infeed width (mm)	1000
Rotor Diameter (mm)	1300
Rotor Width (mm)	1060

Advantages

- Solid construction for continuous, industrial-scale operation
- Variable infeed speed
- Closed, robust chipping drum - high rotor weight of more than 3.5 t for constant rotation speed and evenly-shaped wood chips
- Changeable screens for various sizes of wood chips
- Custom-built rotor with 45 mm blade advance for economical production of very large wood chips (P100 / G100)
- Chipping knives with overload protection
- Gentle, conveyor-based discharge for top-quality wood chips - 90° Swiveling rear conveyor enables set-up of large pits behind the machine
- Easy setup and maintenance

CHIPPER DH 910 SA-B E



Applications

The precision chippers of the DH series 910 process waste wood, wood slabs, log and preshredded root timber to different sizes of wood chips. The machines can handle trunk diameters up to 900 mm temporary.



Advantages

- Solid construction for continuous, industrial-scale operation
- Variable infeed speed
- Closed, robust chipping drum - high rotor weight of more than 3.5 t for constant rotation speed and evenly-shaped wood chips
- Changeable screens for various sizes of wood chips
- Custom-built rotor with 45 mm blade advance for economical production of very large wood chips (P100 / G100)
- Chipping knives with overload protection
- Gentle, conveyor-based discharge for top-quality wood chips - 90° Swiveling rear conveyor enables set-up of large pits behind the machine
- Easy setup and maintenance

DIMENSIONS

Chassis	Semi-trailer
Total weight (kg)	30000
Length (mm)	ca. 20000
Width (mm)	2500
Height (mm)	5024
Transport width (mm)	2500
Transport height (mm)	4000
Transport length (mm)	12370

DRIVE

Engine type	electrical drive
Make	AC motor
Motor power (kW / PS)	450 / 612

LOWER SCREENING DECK

Knives	5
Logdiameter Hardwood (mm)	700
Logdiameter Softwood (mm)	900
Infeed height (mm)	900
Infeed width (mm)	1000
Rotor Diameter (mm)	1300
Rotor Width (mm)	1000

CHIPPER DH 910 E



Applications

The precision chippers of the DH series 910 process waste wood, wood slabs, log and preshredded root timber to different sizes of wood chips. The machines can handle trunk diameters up to 900 mm temporary.



DIMENSIONS

Chassis	Static
Total weight (kg)	27500
Length (mm)	12700
Width (mm)	2500
Height (mm)	3400

DRIVE

Engine type	electrical drive
Make	AC-motor
Motor power (kW / PS)	450 /

LOWER SCREENING DECK

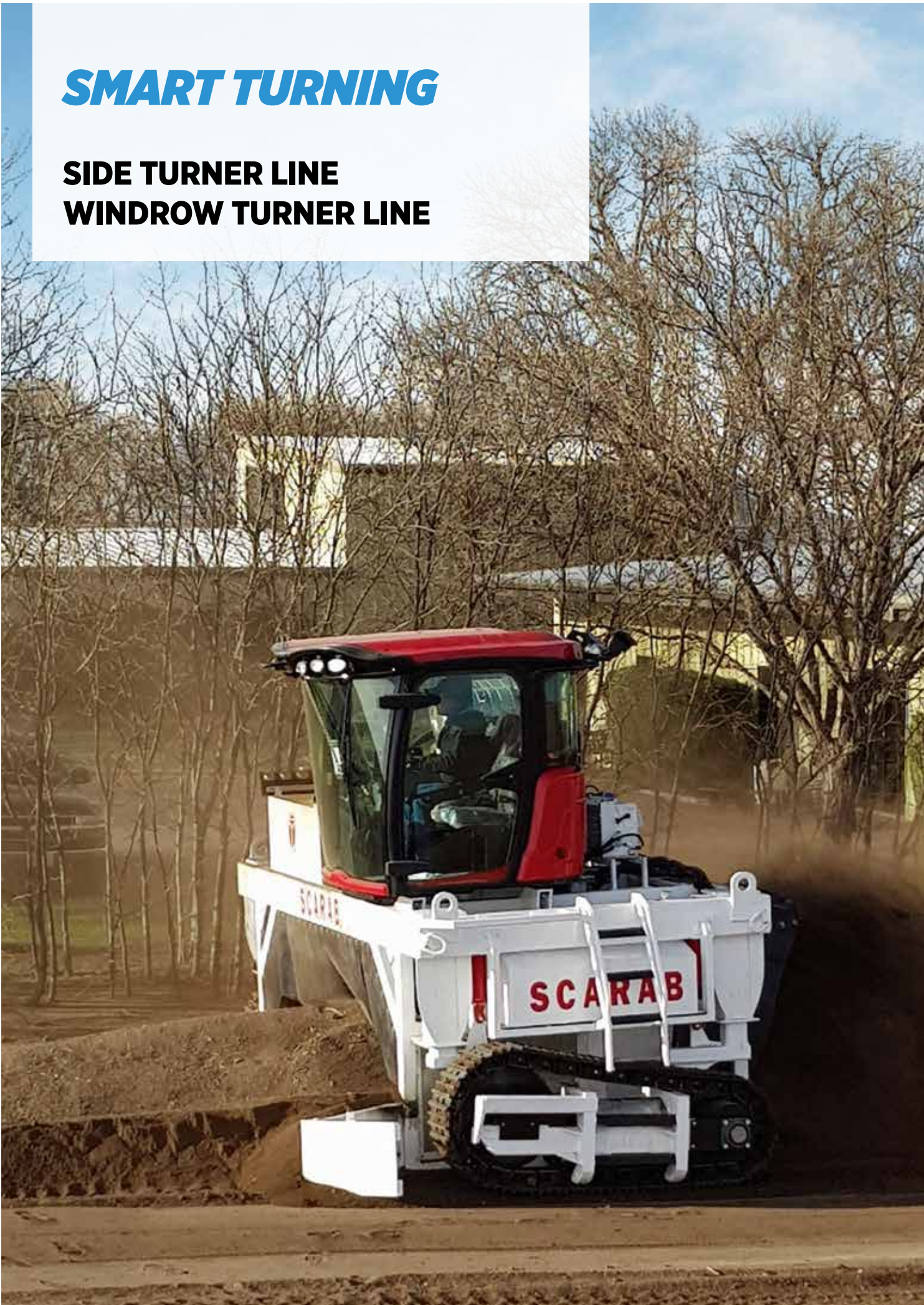
Knives	5
Logdiameter Hardwood (mm)	680
Logdiameter Softwood (mm)	900
Infeed height (mm)	900
Infeed width (mm)	1000
Rotor Diameter (mm)	1300
Rotor Width (mm)	1000

Advantages

- Solid construction for industrial-scale operation
- Efficient continuous use by electric drive
- Closed, robust chipping drum produces evenly shaped wood chips
- High rotor weight of more than 3.5 t for constant rotation speed and evenly-shaped wood chips
- Custom-built rotor with 45 mm blade advance for economical production of very large wood chips
- Chipping knives with overload protection
- Easy setup and maintenance

SMART TURNING

SIDE TURNER LINE WINDROW TURNER LINE



SIDE TURNER LINE

WINDROW TURNER DU 265



Applications

The windrow turner DU 265 can be used for effective turning and processing compost windrows, contaminated soil or windrows of shredded green waste or waste residues and biowaste.



DIMENSIONS

Chassis	Mounted unit
Total weight (kg)	4950
Length (mm)	2867
Width (mm)	5106
Height (mm)	2682
Transport width (mm)	2950
Transport height (mm)	3030
Transport length (mm)	2867

DRIVE

Engine type	PTO-Drive
Make	110 to 130 KW
Motor power (kW / PS)	130 / 177

MIXINGSHAFTS

Maximum Windrow height (mm)	3200
-----------------------------	------

Advantages

- Ventilation of materials
- High degree of windrow homogenization
- Low acquisition costs, machine works with any standard tractor
- Laterally shifted windrow structure to avoid blending of different states of decomposition

WINDROW TURNER DU 320



Applications

The windrow turner DU 320 can be used for effective turning and processing compost windrows, contaminated soil or windrows of shredded green waste or waste residues and biowaste.

DIMENSIONS	
Chassis	Mounted Unit (3 Point Cat. 3)
Total weight (kg)	5700
Length (mm)	3100
Width (mm)	5200
Height (mm)	3281
Transport width (mm)	3070
Transport height (mm)	3680
Transport length (mm)	2703
DRIVE	
Engine type	PTO-Drive
Make	max. 228 kW
Motor power (kW / PS)	228 / 310
MIXINGSHAFTS	
Maximum Windrow height (mm)3300	



Advantages

- High degree of windrow homogenization
- Accelerated rotting process
- Suitable for standard tractors equipped with forward-reverse unit
- Perfectly suited for trapezoid- and shift-shaped windrows
- Applicable for earths and paper-based materials

NEW: WINDROW TURNER SERIES SCARAB



- Belt driven or hydraulic driven drum
- Choice of Cat or Scania engines
- Open access design for easy maintenance
- Independent suspension
- Rubber covered tunnel or stainless steel
- Choice of auger style or aggressive flailed drum
- Track drive

SCARAB MODELS

SCARAB 125
SCARAB 167
SCARAB 188
SCARAB 208

Please contact us for more information!



The SCARAB Difference

- **Belt driven drums provide unmatched productivity and fuel efficiency.** SCARAB is the industry leader for both hydraulic and belt driven drums. Belt driven drums deliver about 50% more of the available horsepower to the drum than hydraulic models. This translates into lower fuel consumption and less time in the windrow means lower labor costs. For larger composters these savings can exceed the cost of the turner in less than 10 years.
- **Oversized components:** SCARAB's reputation for reliability and longevity can be traced to one thing..... oversized components. If you want to be certain about your choice of turners simply compare the size of our radiators, engines, drive systems, suspensions, hydraulic systems, and final drive motors to any other model..... then decide.
- **Local parts and service:** our dealer network means you won't be waiting weeks for a repair and one day shipment is available on most parts. Many parts are available through local merchants.
- **Design flexibility reduces your total operating costs:** our largest model can significantly reduce your cover and pad cost, our pad-saver option maximizes the material on your pad, and our D5 tracks insure traction in the most challenging conditions.
- **With more design options than any other manufacturer and over 40 years of experience built into every machine,** SCARAB continuously tests ways to improve machine performance and support evolving needs of composters.



SMART SIFTING

WATERSIFTER LINE
WINDSIFTER LINE



WATERSIFTER LINE

DENSITY SEPARATION HDS-M



Applications

The HDS-M is the medium-sized version of the hydro density separation of Doppstadt. Like the larger HDS-L, it combines 3 process steps in one machine, which are density separation, washing of light material and water treatment. Differences are the size and throughput. The machine is used for compost screen oversize, root wood, green cuttings and wood stone mixtures such as mixed construction waste.

DIMENSIONS

Chassis	Static
Total weight (kg)	7500
Length (mm)	14555
Width (mm)	2322
Height (mm)	3510

DRIVE

Engine type	Elektrisch
-------------	------------

WASHING DRUM

Diameter (mm)	1400
Length (mm)	4000
Mesh size (mm)	6



Advantages

- adjustable density separation with variable separation cut
- integrated water treatment and recirculation
- washing of the light fraction
- low operating costs
- plug and play
- robust

DENSITY SEPARATION HDS-S



Applications

The HDS-S has already proven itself in mixed construction waste and compost screen oversize. In principle, however, it can separate all mixtures at a density cut of 1 g/cm³ or above it. The special feature is the degree of variability. This way even heavy or water-saturated wood can be separated from stones.

DIMENSIONS

Chassis	Static
Total weight (kg)	2000
Length (mm)	4358
Width (mm)	3878
Height (mm)	2421

DRIVE

Engine type	electric
Motor power (kW / PS)	13 / 17.7



Advantages

- adjustable density separation with variable separating cut
- quick amortization
- simple, maintenance-friendly, continuous separation process
- high selectivity
- plug and play
- high throughput in reference to the foot print

WIND SIFTING WS 1001



Applications

The static windsifter can be combined with all of the Doppstadt screening systems thus forming a powerful state-of-the-art processing unit. Construction debris, C & D waste, industrial waste, bio waste, RDF, waste wood and compost are suitable input materials for the machine combination. Easiest operations of adjustments enables the change of processing material within few minutes.

DIMENSIONS

Chassis	Static
Total weight (kg)	5000 / 5400 / 5800
Length (mm)	6877 / 8362 / 9847
Width (mm)	2005
Height (mm)	2300
Transport width (mm)	1950
Transport height (mm)	2300
Transport length (mm)	6877 / 8362 / 9847

DRIVE

Engine type	Electric Standard
Make	SEW / NORD
Motor power (kW / PS)	30 / 41

SLS

Power (kW)	18,5
Air discharge volume	12.000

SEPARATION DRUM

Drive	Drehstrommotor
Drive power	1,5 kW

BLOWER UNIT

Power (kW)	22 kW
Construction type	Radialventilator



Advantages

- Modular working chamber allows for individual lay out design geared to specific areas of application
- Aerodynamically optimized blast-pipe system
- Infeed belt with downward buckling prevents larger scraps from mingling with lightweight fraction
- Standardized scaling of all set-up parameters for perfect repeatability of separation results
- High conveying speed ensures maximum throughput while delivering top-quality separation results

WIND SIFTING WS 1501



Applications

The static windsifters of the WS model range can be combined with all Doppstadt screening systems, thus forming a powerful state-of-the-art processing unit. Construction debris, C & D waste, industrial waste, bio waste, RDF, waste wood and compost are suitable input materials for this most innovative realization of substance separation by way of windsifting.



DIMENSIONS

Chassis	Static
Total weight (kg)	5500 / 5900 / 6300
Length (mm)	6877 / 8362 / 9847
Width (mm)	2505
Height (mm)	2300
Transport width (mm)	2450
Transport height (mm)	2300
Transport length (mm)	6877 / 8362 / 9847

DRIVE

Engine type	Electric Standard
Make	AC current drive
Motor power (kW / PS)	35 / 48

SLS

Power (kW)	22
Air discharge volume	18000 m³/h

SEPARATION DRUM

Drive	Drehstrommotor
Drive power	1,5 kW

BLOWER UNIT

Power (kW)	30 kW
Construction type	Radialventilator

Advantages

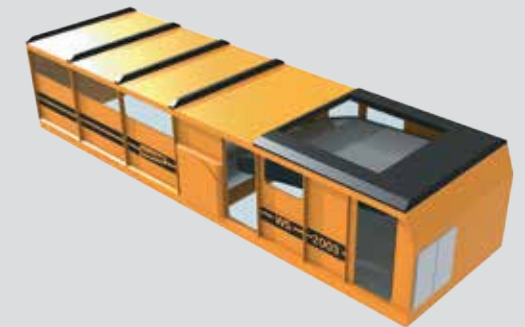
- Modular expansion chamber allows for individual lay out design geared to specific areas of application
- Aerodynamically optimized blast-pipe system
- Infeed belt with downward buckling prevents larger scraps from mingling with lightweight fraction
- Standardized scaling of all set-up parameters
- High conveying speed ensures maximum throughput while delivering top-quality separation results

WIND SIFTING WS 2001



Applications

The static windsifters of the WS model range can be combined with all Doppstadt screening systems, thus forming a powerful state-of-the-art processing unit. Construction debris, C & D waste, industrial waste, bio waste, RDF, waste wood and compost are suitable input materials for this most innovative realization of substance separation by way of windsifting.



DIMENSIONS

Chassis	Static
Total weight (kg)	6000 / 6750 / 7500
Length (mm)	6877 / 8362 / 9847
Width (mm)	3005
Height (mm)	2300
Transport width (mm)	2950
Transport height (mm)	2300
Transport length (mm)	6877 / 8362 / 9847

DRIVE

Engine type	Electric Standard
Make	NORD / SEW
Motor power (kW / PS)	35 / 48

SLS

Power (kW)	37
Air discharge volume	24000

SEPARATION DRUM

Drive	3-phase motor
Drive power	1,5 kW

BLOWER UNIT

Power (kW)	30 kW
Construction type	Radial blower

Advantages

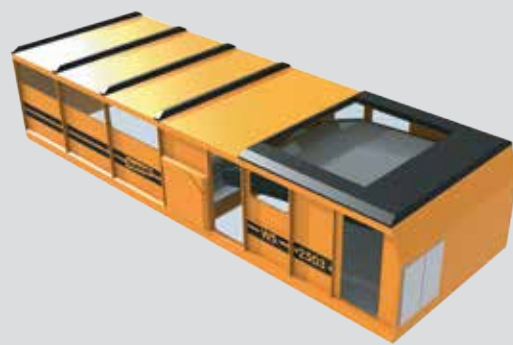
- Modular expansion chamber allows for individual lay out design geared to specific areas of application
- Aerodynamically optimized blast-pipe system
- Infeed belt with downward buckling prevents larger scraps from mingling with lightweight fraction
- Standardized scaling of all set-up parameters for perfect repeatability of separation results
- High conveying speed ensures maximum throughput while delivering top-quality separation results

WIND SIFTING WS 2501



Applications

The static windsifters of the WS model range can be combined with all Doppstadt screening systems, thus forming a powerful state-of-the-art processing unit. Construction debris, C & D waste, industrial waste, bio waste, RDF, waste wood and compost are suitable input materials for this most innovative realization of substance separation by way of windsifting.



DIMENSIONS

Chassis	Static
Total weight (kg)	7770 / 8200 / 8650
Length (mm)	6877 / 8362 / 9847
Width (mm)	3505
Height (mm)	2300
Transport width (mm)	3450
Transport height (mm)	2300
Transport length (mm)	6877 / 8362 / 9847

DRIVE

Engine type	Electric Standard
Make	AC current drive
Motor power (kW / PS)	50 / 68

SLS

Power (kW)	44
Air discharge volume	30000

SEPARATION DRUM

Drive	Drehstrommotor
Drive power	1,5 kW

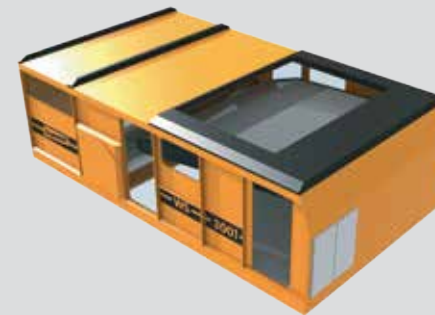
BLOWER UNIT

Power (kW)	45 kW
Construction type	Radialventilator

Advantages

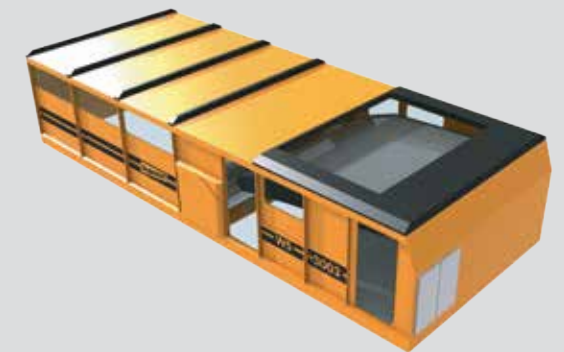
- Modular expansion chamber allows for individual lay out design geared to specific areas of application
- Aerodynamically optimized blast-pipe system
- Infeed belt with downward buckling prevents larger scraps from mingling with lightweight fraction
- Standardized scaling of all set-up parameters for perfect repeatability of separation results
- High conveying speed ensures maximum throughput while delivering top-quality separation results

WIND SIFTING WS 3001



Applications

The static windsifters of the WS model range can be combined with all Doppstadt screening systems, thus forming a powerful state-of-the-art processing unit. Construction debris, C & D waste, industrial waste, bio waste, RDF, waste wood and compost are suitable input materials for this most innovative realization of substance separation by way of windsifting.



DIMENSIONS

Chassis	Static
Total weight (kg)	8510 / 8970 / 9550
Length (mm)	6877 / 8362 / 9847
Width (mm)	4005
Height (mm)	2300
Transport width (mm)	3950
Transport height (mm)	2300
Transport length (mm)	6877 / 8362 / 9847

DRIVE

Engine type	Electric Standard
Make	AC current drive
Motor power (kW / PS)	50 / 68

SLS

Power (kW)	44
Air discharge volume	36000

SEPARATION DRUM

Drive	Drehstrommotor
Drive power	1,5 kW

BLOWER UNIT

Power (kW)	45 kW
Construction type	Radialventilator

Advantages

- Modular expansion chamber allows for individual lay out design geared to specific areas of application
- Aerodynamically optimized blast-pipe system
- Infeed belt with downward buckling prevents larger scraps from mingling with lightweight fraction
- Standardized scaling of all set-up parameters for perfect repeatability of separation results
- High conveying speed ensures maximum throughput while delivering top-quality separation results

WIND SIFTING AIRFLEX 1500



Applications

The windsifters of the WS series can be combined with all Doppstadt screening systems, forming a powerful state-of-the-art processing unit. The machine combination is perfectly suitable for a variety of separation applications, such as the processing of compost, construction waste, mixed construction waste, commercial waste, fuel surrogates, FE post processing, old growth timber, PET bottles, slag, scrap metal and biowaste.



Advantages

- The machine has been designed for transport in a 40" sea container
- Complete utilization of the windsifter geometry using disk distributors
- Highly efficient extraction of light media via SLS extension
- Highly mobile unit with hooklift carriage for easy road transportation
- Ready-to-Go thanks to pre-installed generator or power supply via 125 CEE plug
- Control units remain at ground level throughout
- Easy maintenance and operation
- Maximum process stability thanks to high conveyor discharge rates

DIMENSIONS

Chassis	Hook-lift
Total weight (kg)	12000
Length (mm)	8000
Width (mm)	2300
Height (mm)	2450 / 3690
Transport width (mm)	2300
Transport height (mm)	2600
Transport length (mm)	8000

DRIVE

Engine type	Electrical / diesel aggregate
Make	Caterpillar
Motor power (kW / PS)	40 / 55

Engine type 2	Electrical / diesel aggregate
Make	Caterpillar
Motor power (kW / PS)	90 / 122

SLS

Power (kW)	15
Air discharge volume	13000

SEPARATION DRUM

Drive	electric
Drive power	4 kW

BLOWER UNIT

Power (kW)	30 kW
Construction type	radial fan

WIND SIFTING WS 1600



Applications

The static windsifters of the WS model range can be combined with all Doppstadt screening systems, thus forming a powerful state-of-the-art processing unit. Construction debris, C & D waste, industrial waste, bio waste, RDF, waste wood and compost are suitable input materials for this most innovative realization of substance separation by way of windsifting.



DIMENSIONS

Chassis	Static
Total weight (kg)	8100
Length (mm)	7300
Width (mm)	2770
Height (mm)	4200
Transport width (mm)	2244
Transport height (mm)	2700
Transport length (mm)	7300

DRIVE

Engine type	Elektisch
Make	Drehstrommotor
Motor power (kW / PS)	50 /

SEPARATION DRUM

Drive	Drehstrommotor
Drive power	1,5 kW

BLOWER UNIT

Power (kW)	30 kW
Construction type	Radialventilator

Advantages

- Robust ground frame for maximum mobility
- Reversible discharging transport belt for heavy fractions
- Conveyor belts with integrated deflectors at material infeed
- Minimum particulate emissions due to sophisticated air circulation system
- Very precise adjustability on separation results

WIND SIFTING WS 2000 K



Applications

The windsifters of the WS model range can be combined with all Doppstadt screening systems, thus forming a powerful state-of-the-art processing unit. Construction debris, C & D waste, industrial waste, bio waste, RDF, waste wood and compost are suitable input materials for this most innovative realization of substance separation by way of windsifting.



Advantages

- Only mobile windsifting solution with usage of complete 2 m working width on infeed belt
- Very high throughput of up to 150 m³/h
- Output stream consisting of up to four fractions
- Standardized scaling of all set-up parameters for perfect repeatability of separation results
- Reliable drive unit of SM product range (diesel-hydraulic)

DIMENSIONS

Chassis	Steel-tracks
Total weight (kg)	24500
Length (mm)	12070
Width (mm)	3000
Height (mm)	4111
Transport width (mm)	3000
Transport height (mm)	3250
Transport length (mm)	12070

DRIVE

Engine type	Dieselmotor
Make	DEUTZ TCD 3.6 L4
Exhaust level	EUROMOT III B / Tier 4i
Motor power (kW / PS)	90 / 122
Fuel tank (l)	300
Torque (Nm)	480

SLS

Power (kW)	15
Air discharge volume	18500

SEPARATION DRUM

Drive	Hydraulikmotor
-------	----------------

BLOWER UNIT

Power (kW)	30
Construction type	Radialventilator

WIND SIFTING EASY 800



DIMENSIONS

Chassis	Static
Total weight (kg)	700
Length (mm)	1217,6
Width (mm)	1084
Height (mm)	1637

DRIVE

Engine type	electric
Make	SEW
Motor power (kW / PS)	15 /

SLS

Power (kW)	15
Air discharge volume	11500



Advantages

- An additional separation stage can be realized which further enhances the quality of the screen overflow in the same machine.
- Integration into the control cabinet of the system
- No machine-specific restrictions apply for the conveyor version to be mounted at the transition points of the extraction systems
- Easy adjustment of static suction lift

WIND SIFTING EASY 1200



DIMENSIONS

Chassis	Static
Total weight (kg)	780
Length (mm)	1870
Width (mm)	2200
Height (mm)	1708

DRIVE

Engine type	electric
Make	SEW
Motor power (kW / PS)	15 /

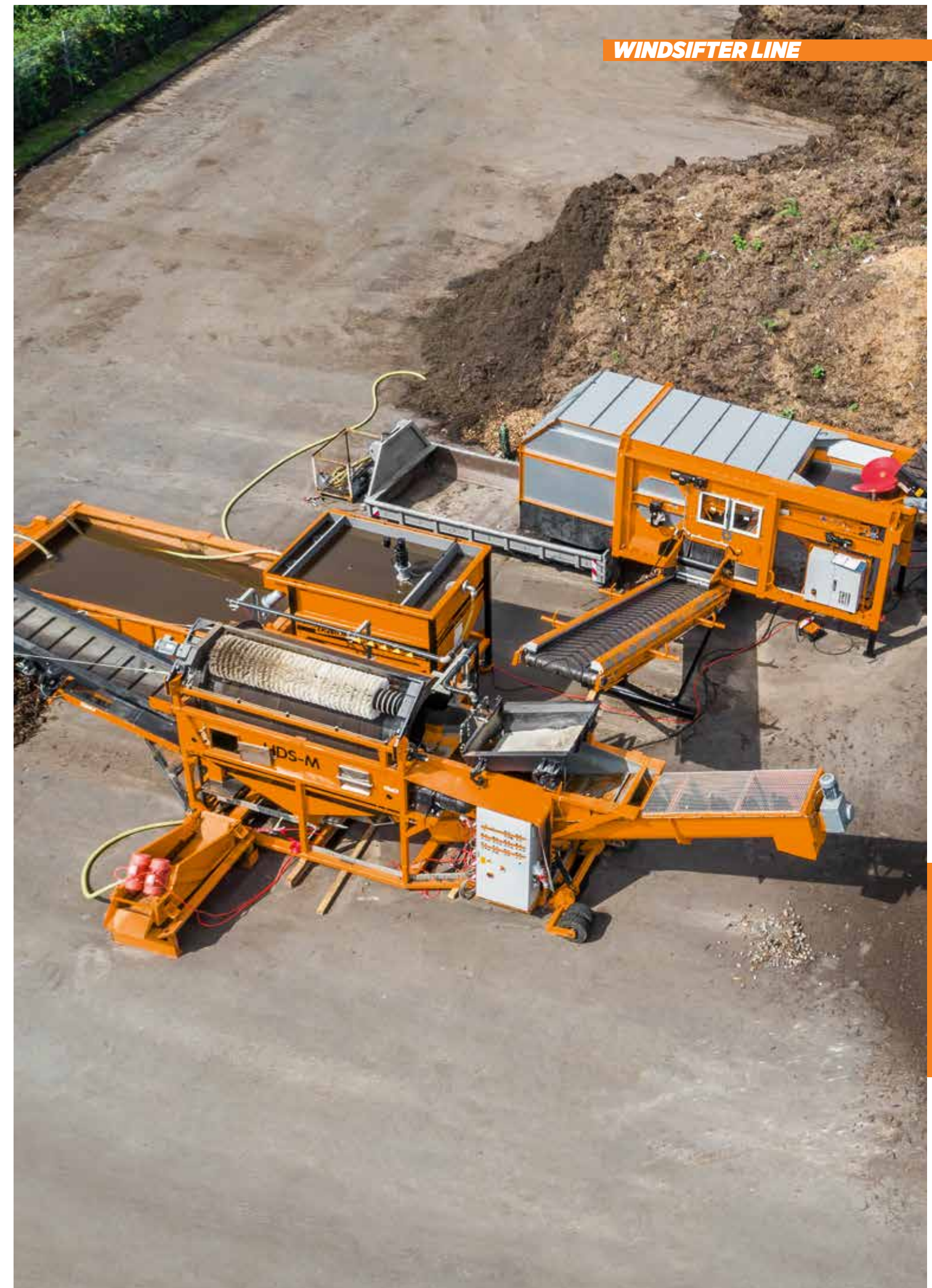
SLS

Power (kW)	15
Air discharge volume	11500



Advantages

- An additional separation stage can be realized which further enhances the quality of the screen overflow in the same machine.
- Integration into the control cabinet of the system
- No machine-specific restrictions apply for the conveyor version to be mounted at the transition points of the extraction systems
- Easy adjustment of static suction lift



SMART WASHING

WASH-TROMMEL LINE WATER TREATMENT LINE



WASH-TROMMEL LINE

DENSITY SEPARATION GRITBUSTER WT-250



Applications

The WT-250 is suitable for many materials, which have to be wet-screened and separated into an organic and mineral fraction: road sweepings, gully waste or sand trap material. The removal of the mineral content is particularly important when a mixture has to be disposed of by incineration. The removal lowers disposal costs and the mineral fraction can even be marketed in some cases with additional positive revenue.



DIMENSIONS

Chassis	Static
Total weight (kg)	10000
Length (mm)	11744
Width (mm)	6620
Height (mm)	2666

DRIVE

Engine type	electric
Motor power (kW / PS)	45 / 61

DISCHARGE CONVEYOR REAR

Width (mm)	820
Length (mm)	2784

WASHING DRUM

Diameter (mm)	1520
Length (mm)	3012

Advantages

- reduced disposal costs due to separation into organic and mineral fraction
- reuse or resale of sand and gravel
- separation into four fractions
- high throughput
- robust process
- plug & play thanks to integrated control cabinet

MOBIL TROMMEL WASH PLANT WB 518



Applications

The raccoon is a mobile trommel washer with the purpose to remove adhesions like mud, biofilm, soil etc. from the input material. Applications are for example biomass, stones, gravel or plastic. It causes intensive interaction between input material and water. Due to friction between particles in the drum, adhesions are removed so that the recycling material can be further processed.

DIMENSIONS

Chassis	2-axle-trailer
Total weight (kg)	17000
Length (mm)	15000
Width (mm)	7000
Height (mm)	3800
Transport width (mm)	2550
Transport height (mm)	4000
Transport length (mm)	11000

DRIVE

Engine type	diesel hydraulic
Make	DEUTZ TCD 2.9 L4
Exhaust level	EUROMOT III B / Tier 4f
Motor power (kW / PS)	55 / 75
Fuel tank (l)	300
Torque (Nm)	max. 300

DISCHARGE CONVEYOR REAR

Width (mm)	800
Length (mm)	5500
Belt speed (m/s)	1.1
Height (mm)	up to 3500

SCREEN DRUM

Diameter (mm)	1800
Length (mm)	4700
Mesh size (mm)	8 to 100
Mesh type	square or round
Drum wall thickness (mm)	6 to 10



Advantages

- Clean, high-quality end products
- High throughput
- Easy transport on trailer chassis
- Great variability thanks to many configuration options for the basic machine
- Reversible intraday backfitting ensures maximum flexibility

MOBIL TROMMEL WASH PLANT WB 620



Applications

The raccoon is a mobile trommel washer with the purpose to remove adhesions like mud, biofilm, soil etc. from the input material. Applications are for example biomass, stones, gravel or plastic. It causes intensive interaction between input material and water. Due to friction between particles in the drum, adhesions are removed so that the recycling material can be further processed.

DIMENSIONS

Chassis	2-axle-trailer
Total weight (kg)	19000
Length (mm)	15000
Width (mm)	6500
Height (mm)	4000
Transport width (mm)	2550
Transport height (mm)	4000
Transport length (mm)	11900

DRIVE

Engine type	diesel hydraulic
Make	DEUTZ TCD 3.6 L4
Exhaust level	EUROMOT III B/ Tier 4i
Motor power (kW / PS)	85 / 116
Fuel tank (l)	300
Torque (Nm)	max. 480

DISCHARGE CONVEYOR REAR

Width (mm)	1000
Length (mm)	5500
Belt speed (m/s)	1.6
Height (mm)	up to 3500

SCREEN DRUM

Diameter (mm)	2000
Length (mm)	5500
Mesh size (mm)	8 to 100
Mesh type	square or round
Drum wall thickness (mm)	6 to 10



Advantages

- Clean, high-quality end products
- High throughput
- Easy transport on trailer chassis
- Great variability thanks to many configuration options for the basic machine
- Reversible intraday backfitting ensures maximum flexibility

LAMELLA SEPARATOR HB 40 R



Applications

Water treatment is a supporting process for the water-based separation technology from Doppstadt. Whether it is washing, wet screening or a density separation, the process works the better the cleaner the water is. The water treatment allows the process water to be recirculated and thus reduces the consumption of fresh water. The lamella clarifier is a settling process for the separation of settleable substances. In combination with flocculants, even suspended solids can also settle down and be separated in a lamella clarifier.

DIMENSIONS

Chassis	Static
Total weight (kg)	2500
Length (mm)	3000
Width (mm)	2120
Height (mm)	3000

DRIVE

Engine type	electric
Motor power (kW / PS)	0.25 / 0.34

FUNCTIONS

Shoulder surface	40m ²
Throughput	ca. 40m ³ /h



Advantages

- small foot print (6,5m²) while offering a large separation area (40m²)
- closed-loop water recycling
- fresh water needs of unit reduced to minimum

LAMELLA SEPARATOR HB 100 R



Applications

Water treatment is a supporting process for the water-based separation technology from Doppstadt. Whether it is washing, wet screening or a density separation, the process works the better the cleaner the water is. The water treatment allows the process water to be recirculated and thus reduces the consumption of fresh water. The lamella clarifier is a settling process for the separation of settleable substances. In combination with flocculants, even suspended solids can also settle down and be separated in a lamella clarifier.

DIMENSIONS

Chassis	Static
Total weight (kg)	9000
Length (mm)	4200
Width (mm)	3200
Height (mm)	4900

DRIVE

Engine type	electric
Motor power (kW / PS)	0.73 / 1.0

FUNCTIONS

Shoulder surface	100m ²
Throughput	ca. 100m ³ /h



Advantages

- small foot print (13,5m²) while offering a large separation area (100 m²)
- closed-loop water recycling
- fresh water needs of unit reduced to minimum

LAMELLA SEPARATOR IHB 40 R



Applications

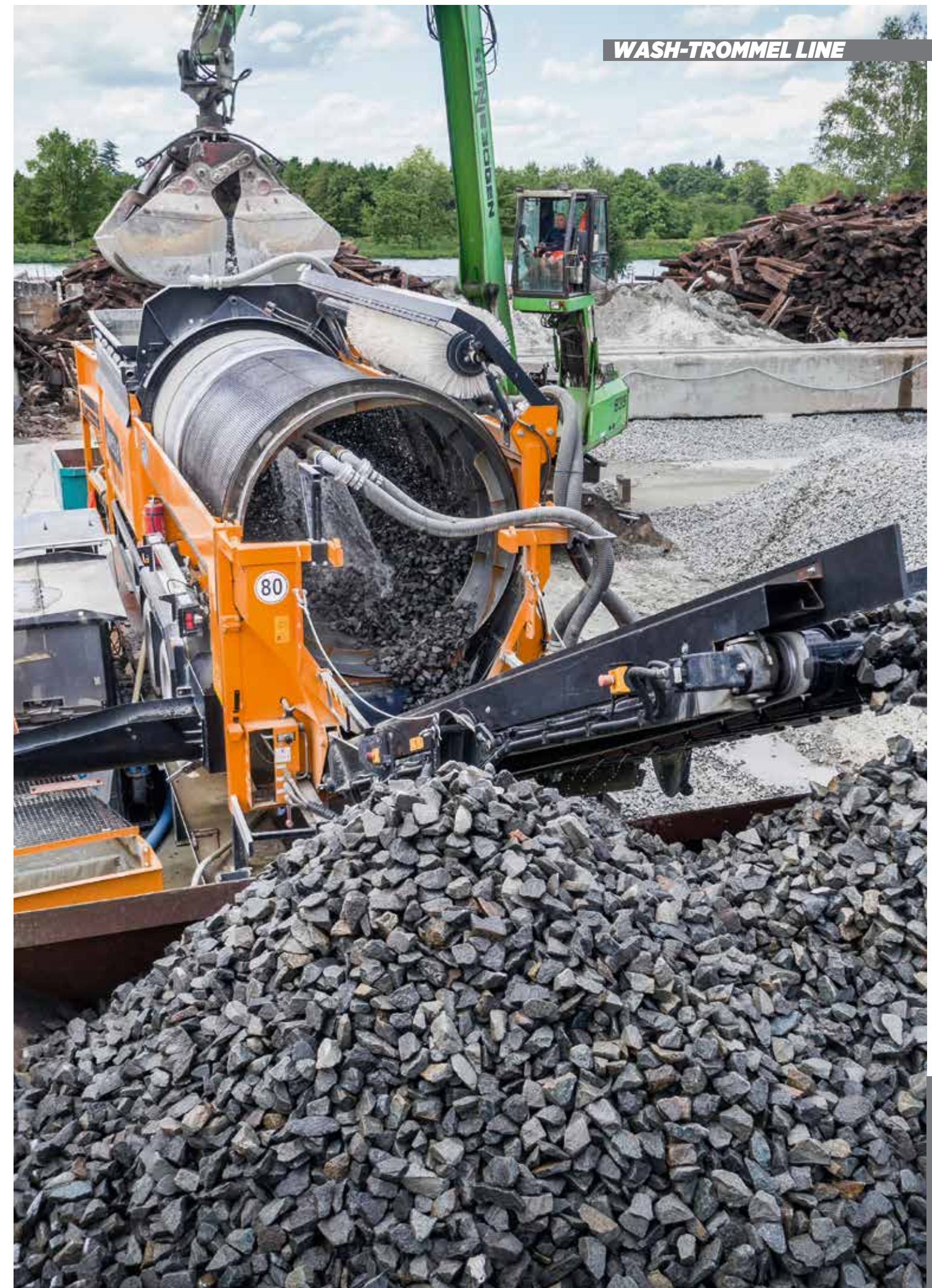
In water-based separation processes such as the sink-float separation (HDS, WT 250) or washing trommel (WB), surface contaminations like sand and silt are carried over into the water from the input materials. In order to use the process water as long as possible these adhesions / impurities must be removed. This water treatment is carried out in the form of a modular system, which can be put into operation quickly and has a small foot print.



Advantages

- compact container design
- plug and play
- reduced water consumption

DIMENSIONS	
Chassis	Static
Total weight (kg)	6000
Length (mm)	6060
Width (mm)	2440
Height (mm)	2890
DRIVE	
Engine type	electric
Motor power (kW / PS)	6.78 / 9.56
FUNCTIONS	
Shoulder surface	40m ²
Throughput	ca. 40m ³ /h



SMART SOLID LIQUID SEPARATION

PRESS EXTRUDER LINE



PRESS EXTRUDER LINE

SCREW PRESS DSP 205



Applications

The main application of the DSP 205 is the processing of organic residues for a subsequent wet fermentation. The bioavailable fraction of the feed is concentrated in the liquid phase and separated from packaging and contaminants.



DIMENSIONS

Chassis	Static
Total weight (kg)	15000
Length (mm)	9609
Width (mm)	2257
Height (mm)	3652

DRIVE

Engine type	pressing screw
Motor power (kW / PS)	45 / 61
Torque (Nm)	18000 - 26000

Engine type 2	mixing hopper
Motor power (kW / PS)	2x15 / 2x20

SEPCIFICATIONS

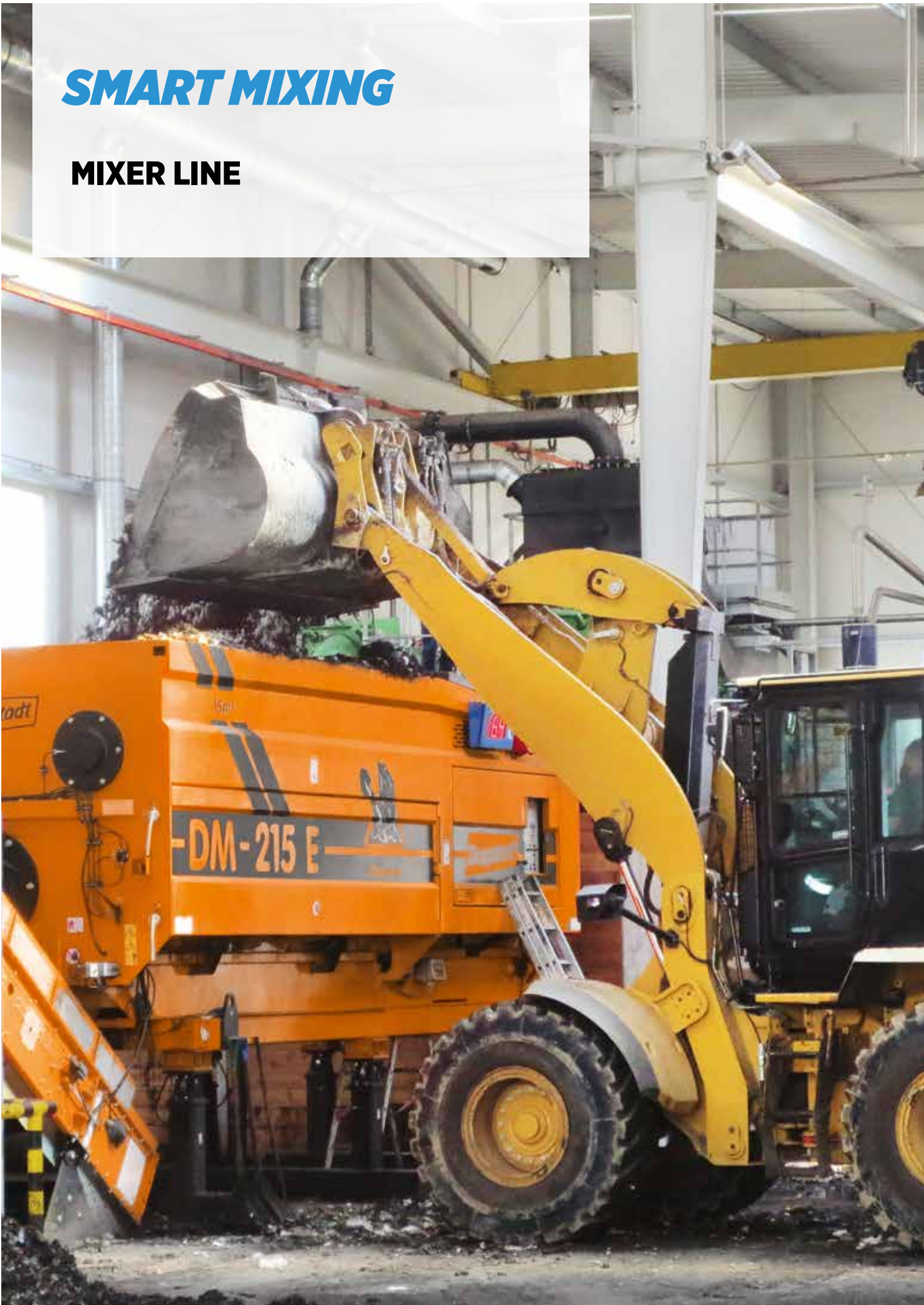
Number of screwshafts	one pressing screw, two mixing screws
Diameter (mm)	pressing screw: 500mm, mixing screws: 480mm
Loading height (mm)	2595
Loading width (mm)	3710

Advantages

- no pre-shredding or pre-screening
- very low plastic contamination of the filtrate due to disintegration of packages via shear stress
- insensitivity to foreign bodies with a diameter of up to 80 mm
- low energy consumption due to co-rotating pressing cone
- easy maintenance due to bolted wear segments

SMART MIXING

MIXER LINE



MIXER LINE

MIXER DM 215 E



DIMENSIONS

Chassis	Static
Total weight (kg)	17500
Length (mm)	7720
Width (mm)	2500
Height (mm)	3766

DRIVE

Engine type	electric
Motor power (kW / PS)	160 / 218

MIXING CHAMBER

Volume (m³)	15
Number of screwshafts	3
Diameter (mm)	upper screws 700 / lower 1100 mm
Loading width (mm)	3775

Applications

The range of applications of the stationary Doppstadt batch mixers covers the mixing of biowaste and green waste in composting plants, the homogenization in mechanical-biological treatment (MBT) plants, in biogas plants and for various mixing tasks in the field of recycling.



Advantages

- homogenization of most difficult feed materials
- high throughput capacity due to intensive mixing motion
- three robust mixing screws with interchangeable mixing paddles
- different forms of mixing paddles according to application
- large service doors for easy accessibility
- one-man operation due to optional remote control
- direct drive with standard AC motor and generously dimensioned drive chain
- very sturdy and durable frame design and wear lining inside the mixing chamber



THIS IS DOPPSTADT **Best Solution. Smart Recycling.**

Doppstadt is one of the world's leading suppliers of innovative solutions in the field of environmental technology. The company specialises in the treatment and processing of reusable materials obtained from waste, biomass, earth, sand and gravel. Its portfolio includes easy-to-maintain, easy-to-use machines for the most complex and challenging applications such as crushing, separating, sifting, mixing, splitting, wet processing and con-

veying. The company employs 700 people in locations all over the world to work on its machines, processes and solutions. The Group has an international network of dealers, with 42 partners in 45 countries. The Doppstadt Group was founded in 1965 and has centres of expertise at Velbert (prototype development and production), Wülfrath (sales and service), Calbe (series production) and Wilsdruff (water based separation),

in Germany. We make sure that none of your day to day servicing gets forgotten and that your Doppstadt equipment gets the love and care it needs. Regularly serviced machines have fewer breakdowns and major damage can be minimised or prevented altogether.

Subject to supplemental agreement, we are able to tailor-make a service solution to meet your operational needs whether it be for mobile equipment or static in-

stallations. Our highly skilled technicians in their well equipped vehicles can provide fast and competent support. Doppstadt Telematics enable you and us to observe exactly what's happening on your machines and systems. From this we are able to provide simple and cost-effective telephone support in the event of problems.

Please contact us for any further informations.

doppstadt.com

Locations Deutschland

DOPPSTADT CALBE GMBH

Barbyer Chaussee 3 • 39240 Calbe/Saale • Germany
T +49 (0) 39 291 55-0 • F +49 (0) 39 291 55-350
info@doppstadt.com

WERNER DOPPSTADT UMWELTECHNIK GMBH & CO.KG

Steinbrink 13 • G – 42555 Velbert • Germany

DOPPSTADT SYSTEMTECHNIK GMBH

Steinbrink 4 • 42555 Velbert • Germany
P +49 (0) 20 52 8 89-0 • F +49 (0) 20 52 8 89-144
systemtechnik@doppstadt.de

DOPPSTADT WATER SEPARATION SYSTEMS GMBH

Steinbrink 4 • 42555 Velbert • Germany
T +49 (0) 20 52 8 89-0 • F +49 (0) 20 52 8 89-596
info.dws@doppstadt.de

NOTES



April 2018



doppstadt.com

Werner Doppstadt
Umwelttechnik GmbH & Co. KG
Steinbrink 13, 42555 Velbert
Deutschland

Telefon +49 2052 889-0
info@doppstadt.de