

MORBARK® 4600XL TRACK WOOD HOG



BENEFITS

- The 4600XL is an aggressive, productive, mid-sized grinder from the leading manufacturer of industrial-grade grinding equipment.
- Process clearing debris, yard waste, storm debris and other mixed woody feedstocks into saleable products.
- Proven drive line protection system protects against catastrophic damage from contaminants.
- Like all Morbark equipment, the 4600XL Wood Hog is a long-lasting, durable machine backed by a world-class parts and service support team.



Morbark Integrated Control Systems (MICS)

Automatically adjusts feed rates and monitors pressures and feed wheel position to maximize production and engine efficiency.



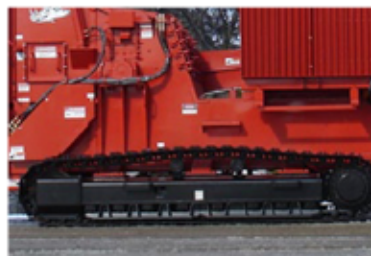
Hammermill

Laser-cut upturn rotor, factory balanced with forged hammers, offers unsurpassed durability and smooth operation.



Feed System

Internal planetary drive with no chains and sprockets means lower maintenance, more torque and better durability.



Track and Drive

325L Caterpillar undercarriage with 600mm double grouser pads provides ground clearance of 20".

SPECIFICATIONS

SPECIFICATIONS MAY VARY WITH EQUIPMENT OPTIONS 2/1/12

General

Length (transport) 42'6"
Length (operating) 61'10"
Height 11'11"
Height (operating) 16'4"
Width 11'11"
Gross weight 88,640 lbs.
Engine CAT
Horsepower 875 HP to 1050 HP
Fuel capacity (tank) 340 gallons
Hydraulic oil capacity 267 gallons
Dust suppression system
Hydraulically operated debris containment door
Remote control with tethered back-up system

Discharge System

Discharge system consists of a hydraulically driven, horizontal 48" x 22' aggregate belly belt conveyor discharging onto a 36" stacking conveyor with hydraulic fold for transport.

Infeed System

Infeed opening 60" x 46"
Variable speed infeed system consists of one 33" diameter top compression feed roll with internal drive and an 14'6" long x 60 3/8" wide live floor equipped with four strands of WDH-120 chain in a staggered configuration and 4'7" long hydraulically operated folding infeed extension.

Hammermill and Grates

36" x 61 3/8" Hammermill system constructed of heavy-duty 25 1/2" diameter rotor, 16 1 1/8" thick two-piece laser-cut rotor plates to ensure precision and enforce steel strength. The plates are keyed on an 8 3/8" diameter shaft with two 5 3/16" bearings and eight 2 1/4" hammer retaining rods. Hammermill pattern consists of 18 2" balanced forged steel heavy-duty hammers, 18 3 1/16" wide double-edged replaceable hammerhead inserts and 18 rakers.

Options

Automatic reversing fan system
Externally adjustable break-away torque limiter
Variety of Hammermill patterns
12- or 16-knife chipper drum assembly
Various conveyor lengths available
Variety of grates sizes available
Dual bed chain drive system
Thrower with extended discharge chute
Magnetized end pulley with collecting slide tray for ferrous metal removal
11 HP air compressor with lockable enclosure
ESPAR heating system for cold-weather start
Hydraulic rod puller
Halogen light package



MORBARK®
BUILDING EQUIPMENT THAT CREATES OPPORTUNITIES