

TG9000 TUB GRINDER



TG9000 TUB GRINDER



Bring relentless grinding power to your operation.

The Vermeer TG9000 is designed for contractors and municipalities who demand more power and higher grinding production in their operations. Whether grinding trees and brush in a land-clearing project or large-scale processing of organic waste - the most powerful member of the Vermeer line of tub grinders will be ready.

The TG9000 is available with a CAT twin-turbocharged diesel engine. A PT Tech gear reduction transmission is controlled by a microprocessor with built-in torque limiter to help protect vital engine parts.

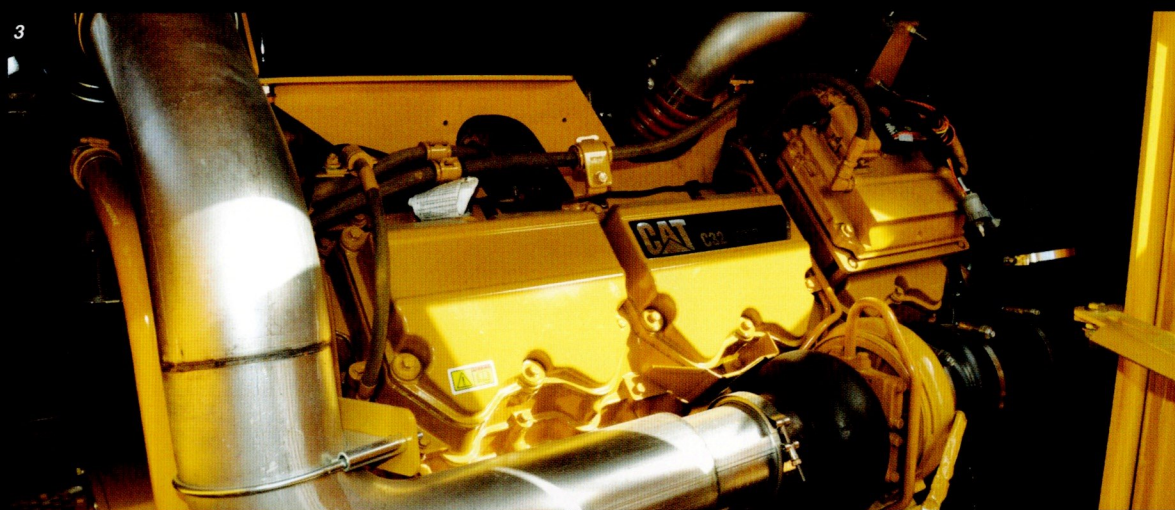
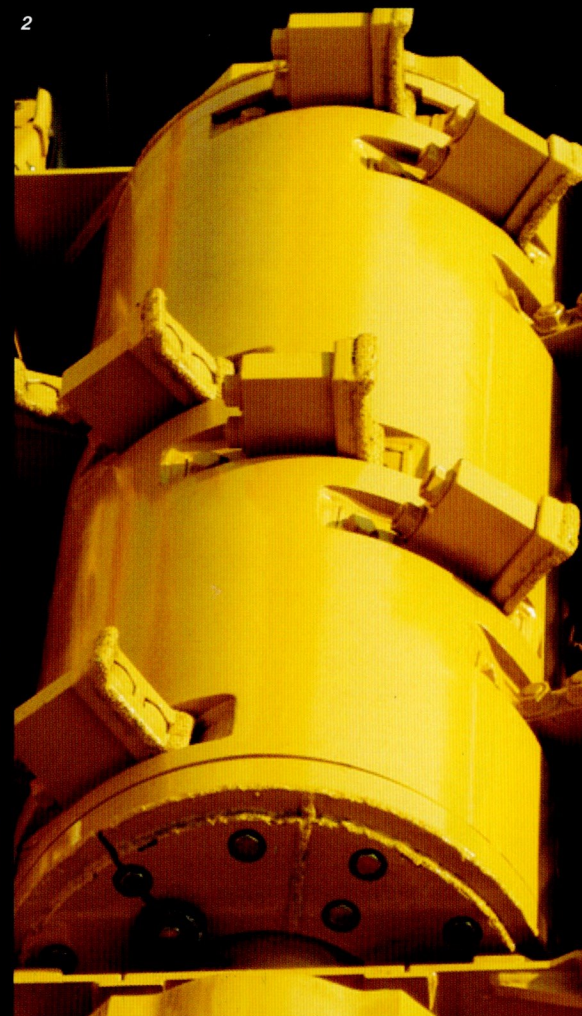
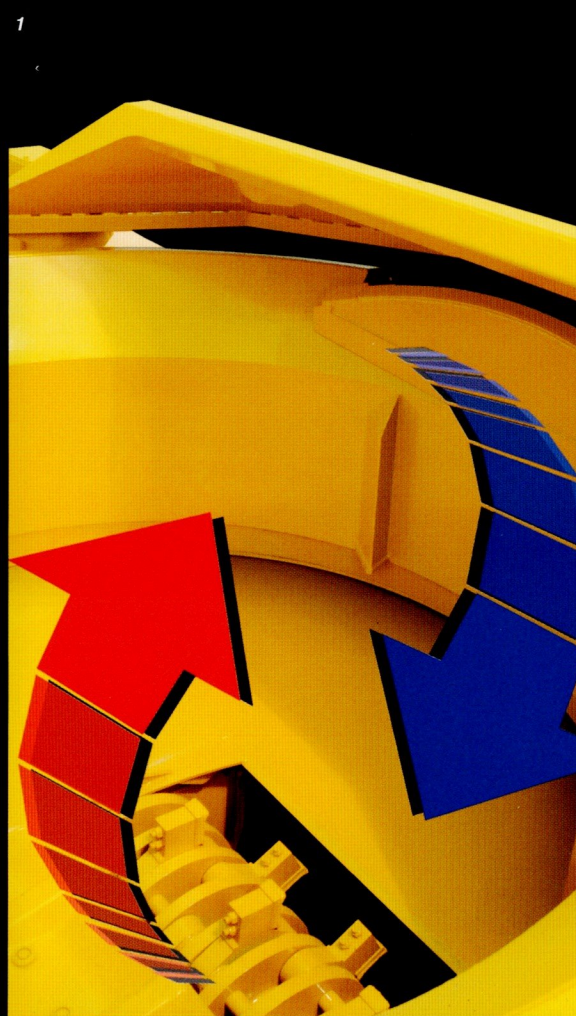
A Vermeer-exclusive Series II duplex drum increases hammer life and production, and eases maintenance. A pin-and-plate configuration is also available, giving the contractor choice based on application.



1: Thrown Object Restraint System (TORS).

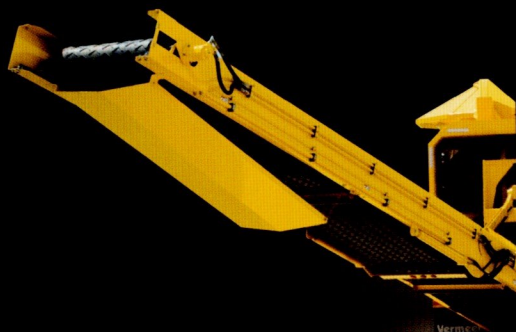
The patented conical TORS has a smooth underside for increased life and better material flow while reducing the quantity and distance of thrown objects when positioned above the tub.

2: Duplex Drum. Patented Series II duplex drum improves productivity and more consistent wear by dispersing material more evenly across the cutter and drum. The TG9000 is also available with optional rotor system.



3: CAT Diesel Engine. A fuel-injected engine provides 1125 hp (838.9 kW) for exceptional power and fuel economy. The engine is equipped with an extra-large cooling system, reducing the risk of overheating, even in the most demanding conditions.

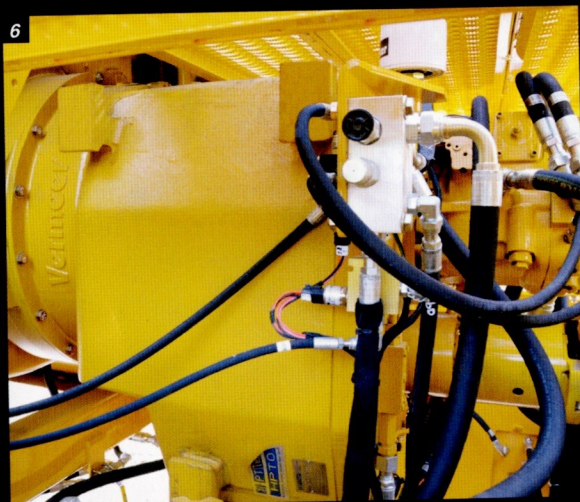
4



5



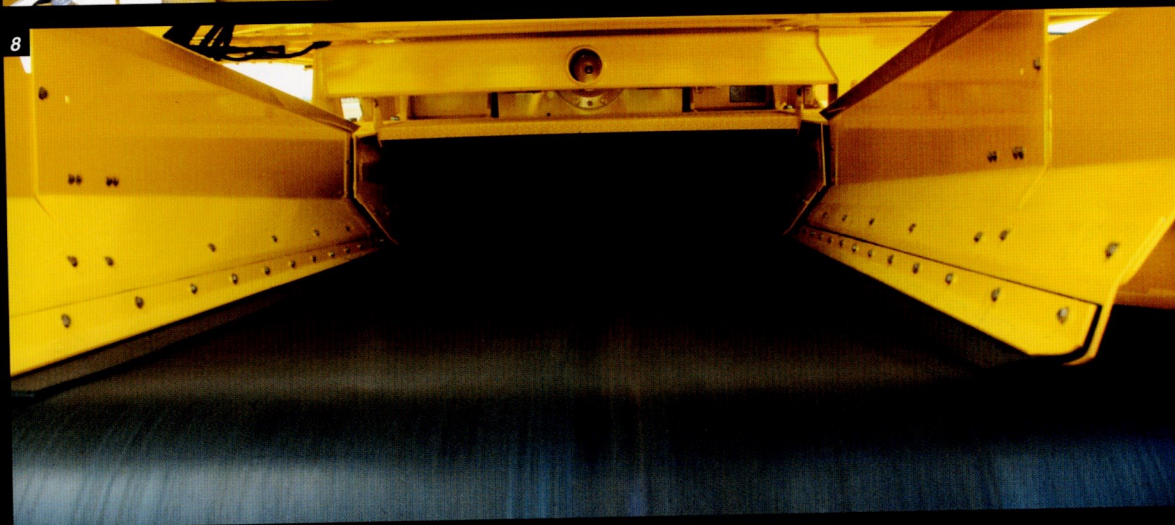
6



7



8



4: Radial Stacking Conveyor. The rear discharge conveyor oscillates 60 degrees allowing the operator to change placement of the processed material without moving the machine. The conveyor may be equipped with an optional magnetic head pulley to help remove ferrous materials, resulting in a more useful end product.



5: Control Panel. A centralized control station provides the operator real-time performance information and full instrumentation. The control panel is also equipped with diagnostic ports for monitoring systems and troubleshooting.

6: PT Tech Wet Clutch. Gear reduction transmission optimizes horsepower and torque transfer from engine to mill. No daily maintenance/adjustments required, outside of oil levels and scheduled service intervals.

7: Remote Control. The convenient remote control enables a user to operate the TG9000 from another location. The remote control also provides real-time machine performance data to aid the operator in maximizing productivity by monitoring and adjusting settings.

8: Belly Conveyor. A smooth, 63" (160 cm) belt enables high-volume product removal. To resist tear and puncture, the conveyor is constructed of .5" (1.3 cm) thick rubber belt.

TG9000 SPECIFICATIONS

GENERAL

Weight: 100,000 lb (45,359.2 kg)

Weight at axles: 69,000 lb (31,297.9 kg)

Weight at kingpin: 31,000 lb (14,061.4 kg)

Length (transport): 45' (13.7 m)

Width (transport): 11.9' (3.6 m)

ENGINE

Model: CAT C32 Tier 2

Aspiration: Twin-turbocharged

Number of cylinders: 12

Gross hp @ full load: 1125 hp (838.9 kW)

Electrical system: 24 V

Fuel-tank capacity: 635 gal (2403.7 L)

Fuel consumption rate @ full load: 56.7 gph L (215 L/hr)

TRAILER

Axle rating: 22,000 lb (9071.8 kg) each

Axles: 4

Tires: 255/70R 22.5 (4 per axle; 16 total)

Brakes: Air-actuated drum

CONTROLS

Radio remote control functions:

Machine stop, engine throttle, tub speed, tub manual (forward or reverse) or auto-control, Thrown Object Restraint System position, rear-discharge conveyor speed, lift and swing

Side-mounted manual control station with Falling Object Canopy System

DRIVE LINE

PTO: PT Tech microprocessor-controlled wet clutch with gear reduction and integrated torque limiter

Drive line: 10 C

TUB

Outside diameter at top (flares unfolded/flares folded): 13' (4 m)/11.4' (3.5 m)

Inside diameter at bottom: 11' (3.4 m)

Depth: 55" (139.7 cm)

Loading height: 11.2' (3.4 m)

Drive: 2 hydraulic motors, positive chain drive

HAMMERMILL

Opening: 32.5" x 70" (82.6 cm x 177.8 cm)

Speed: 1,100 rpm

Cutter tip diameter: 36.4" (92.5 cm)

Main bearings: 5.5" (14 cm) spherical rollers

Breaker bar: 2.5" x 4" (6.4 cm x 10.2 cm) T-1

Screens: 1" (2.5 cm) thick A / R 400 with various hole sizes

PIN & PLATE ROTOR

Main shaft diameter: 8" (20.3 cm)

Hammers: 22

Number of cutter blocks: 22

Cutter tip options: 3.5" (8.9 cm) wide 2-bolt or 2.75" (7 cm) wide x 5" (12.7 cm) tall 2-bolt

Cutter retention: 2 grade 8-bolt

Rods diameter: 2.5" (6.4 cm)

DUPLEX DRUM OPTION

Center retention: 2" (5.1 cm)

Drum skin thickness: 1.5" (3.8 cm)

Hammers: 10

Hammer dimensions: 2" x 4" x 34.8" (5.1 cm x 10.2 cm x 88.4 cm)

Drum / hammer / cutter: reversible

Cutter tip options: 3.5" (8.9 cm) wide 2-bolt or 2.75" (7 cm) wide x 5" (12.7 cm) tall 2-bolt

BELLY CONVEYOR

Belt width: 63" (160 cm)

Drive: Hydraulic

Head pulley: 14" (35.6 cm) diameter

REAR-DISCHARGE CONVEYOR

Belt: 48" wide x 29.6' long (121.9 cm x 9 m)

Drive: Hydraulic

Head pulley: 14" (35.6 cm) diameter (optional magnetic pulley)

Radial movement: + / - 30°, 60° total

Maximum loading height: 18' (5.5 m)

TUB COVER

Hydraulically positioned

Hydraulically locked for operation and transporting