



# Starscreener



## 300A



# StarScreen® 300A

## *The ultimate organic screener*

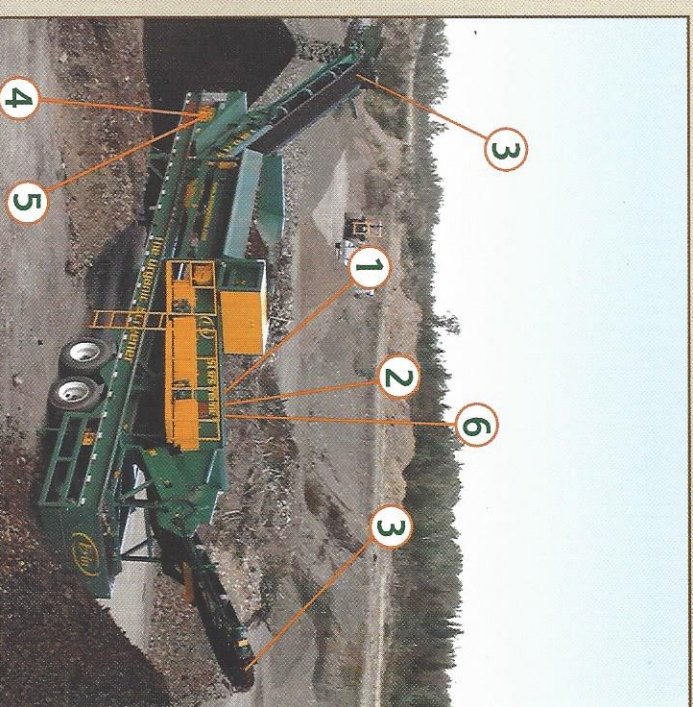
The **Erin STARSCREENER 300A** is a proven technology designed to screen a wide variety of wet and sticky materials. Its 18' (5.5 m) long stardeck is comprised of specially designed long-lasting rubber stars, mounted on a series of high speed rotating shafts. Screen changing with the **STARSCREENER 300A** is a thing of the past! If a smaller product is required, just speed up the rotation of the stars; if a coarser texture is preferred, simply slow down the star rotation at the turn of a dial. The continuous mechanical cleaning system which prevents clogging in challenging material and weather condition is what makes the **Erin STARSCREENER 300A** the ultimate organic screener in its class.

### ***WHAT MAKES IT SO SPECIAL?***

- 1 Excellent production with wet and dry materials
- 2 Screening capacity of 150 to 225 yd<sup>3</sup>/h (115 to 170 m<sup>3</sup>/h) (40-60% moisture)
- 3 Substantial on-board fines and rejects stackers
- 4 Quick set-up
- 5 Size-changing at the turn of a dial
- 6 Automatic cleaning system

### ***WHAT CAN YOU PROCESS?***

- Compost
- Mulch
- Bark
- Soils
- Peat
- Ground asphalt shingles

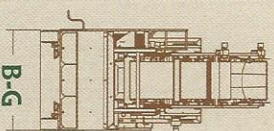
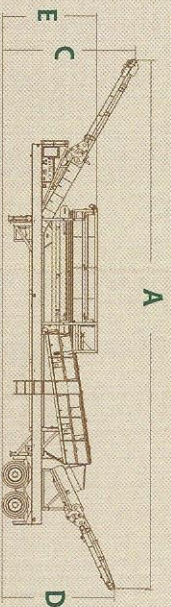




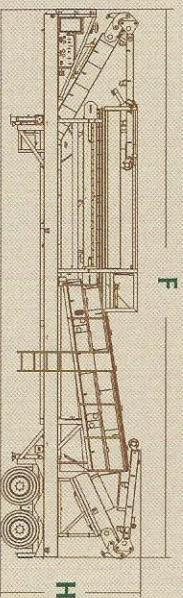
## TECHNICAL SPECIFICATIONS

Working Configuration		Imperial	Metric
A	Length	70' 6"	21.50 m
B	Width	8'	2.44 m
C	Fines stockpiling height	18'	5.49 m
D	Rejects stockpiling height	15'	4.57 m
E	Loading height (min./max.)	11' 2" to 12' 9"	3.40 m to 3.89 m
	Hopper dimensions	14' 8" x 5'	4.47 m x 1.66 m
	Hopper capacity	8.50 yd <sup>3</sup>	6.40 m <sup>3</sup>
	Stardeck length	18'	5.49 m
	Engine (Caterpillar turbo diesel)	100 hp	75 kW
Transport Configuration			
F	Length	51' 3"	15.62 m
G	Width	8'	2.44 m
H	Height	13'	3.96 m
	Weight (approx.)	42 160 lb	19 160 kg

## WORKING CONFIGURATION



## TRANSPORT CONFIGURATION



## OPTIONS

- Stardeck expansion module
- Continuous mechanical cleaning system
- Hydraulic tipping grid on hopper
- Auxiliary hydraulic kit
- Independent stockpiling conveyors
- Stardeck covers





## WHAT CAN ERIN DO FOR YOU?

Erin Systems made its mark thanks to its innovative mobile and fixed recycling equipment. Erin Systems' complete line of products includes the revolutionary FINGERSCREENER, STARSCREENER, FINGERTROMMEL, POWERCRUSHER™, POWERGRINDER and TRIDENT. These technologies, specially designed for recycling, screening, crushing, grinding and sorting a wide range of materials including aggregate, concrete, asphalt, construction and demolition (C&D) debris, contaminated soil, compost, woodwaste, soil, etc., are what make Erin Systems your one-stop-shop for your recycling machinery needs.



### THE FINGERSCREENER SERIES



FS125T



FS165T

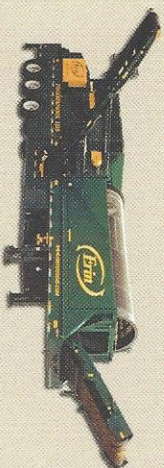


FS206T

### THE TRIDENT



TD125T



FT1020

### THE FINGERTROMMEL

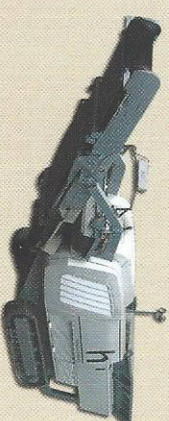
### THE POWERCRUSHER SERIES



Jaw series



Impactor series



Impactor model 13751

### THE STARSCREENER SERIES



SS200AT

#### Corporate Office

1, avenue Premier  
Rivière-du-Loup (Québec)  
G5R 6C1 CANADA  
☎ 1 800 267-7574

(418) 867-8883  
☎ (418) 862-6642  
✉ info@erinsystems.com

#### USA Office

37 Evergreen Drive  
Portland, ME  
04103 USA  
☎ 1 800 789-ERIN (3746)

(207) 878-3661  
☎ (207) 878-3674  
✉ info@erinsystems.com

#### European Office

Derrinlough, Binn Co. Offaly  
IRELAND  
☎ 0800 018-3746

+353-509-22233  
☎ +353-509-22255  
✉ info@erinsystems.com



RECYCLING SOLUTIONS

The content of this brochure is based upon the latest information available at the time of printing, and is aimed at providing a general introduction to Erin Systems' products. No warranty or representation is hereby made by Erin Systems as to the accuracy of said information. Erin Systems is continually updating and improving its products and reserves the right to amend, discontinue, alter or change specifications and prices without prior notice. Erin is a registered trademark of Erin Systems Ltd.

✉ Printed in Canada

www.erinsystems.com