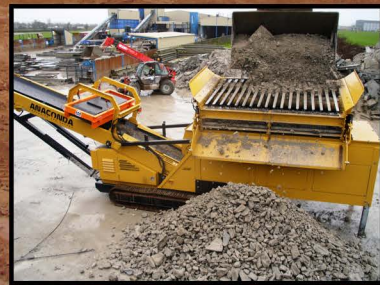


ANACONDA

FTR150 Tracked Feeder Conveyor



The FTR 150 feeder conveyor

is the latest in a range of products designed for the material handling industry. The FTR 150 is robust and extremely cost effective.

The FTR 150 has been designed for the sand & gravel, aggregates, coal and other related industries. The unit has a variable speed belt feeder and a 50ft (15m) long stockpiling conveyor which is ideal for truck/wagon/barge loading or to act as a surge feeder in a new/existing quarry plant. Like all Anaconda products, the FTR 150 will fold and ship worldwide in a standard 40ft container.

OPTIONS

- FEEDBOOT EXTENSIONS
- REMOTE CONTROL TIPPING GRID
- TWIN DECK VIBRATING GRID
- DEUTZ TD2011FL04I AIR COOLED POWER UNIT – 74HP (58KW)
- RADIO REMOTE CONTROL
- TWIN DRIVE MOTORS ON FEEDER AND/OR MAIN CONVEYOR

FEATURES & BENEFITS

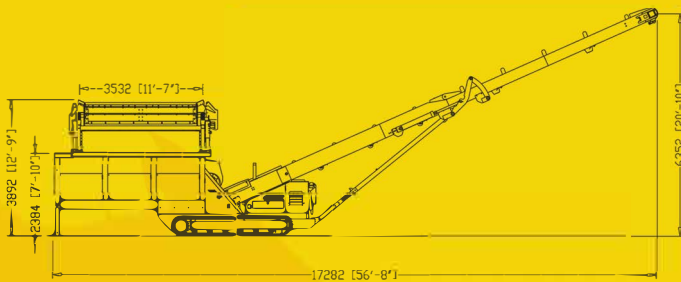
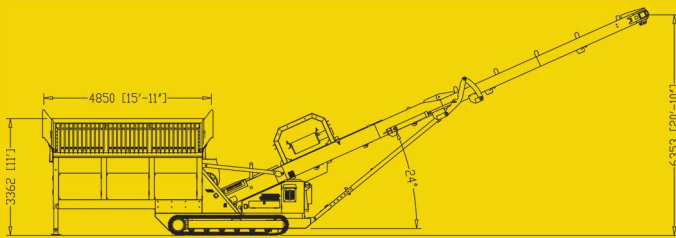
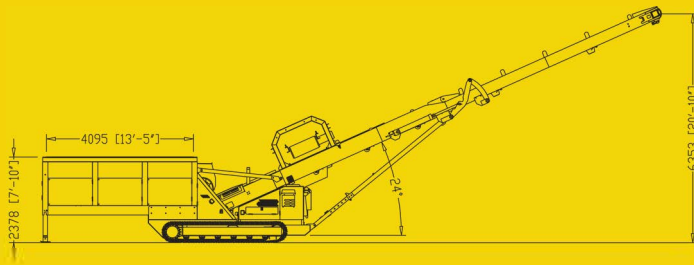
- HOPPER CAPACITY OF 6M³ (OPTION TO INCREASE THIS TO 9M³)
- VARIABLE SPEED 4 PLY 1050MM WIDE FEEDER BELT
- JCB 444 DIESELMAX WATER COOLED ENGINE (84HP – 63KW)
- HYDRAULIC JACKING LEGS FOR EASE OF SET UP/MOVEMENT
- HYDRAULIC FOLDING HEAD SECTION AS STANDARD
- EASY ACCESS TO ENGINE COMPARTMENT
- FOLDS, TRACKS & TRANSPORTS WITHOUT ANY BREAKDOWN/SET-UP
- SET UP TIME 20 MINUTES

ANACONDA

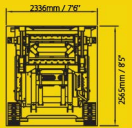
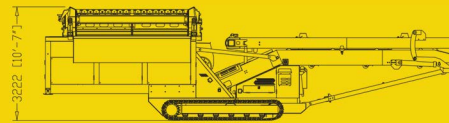
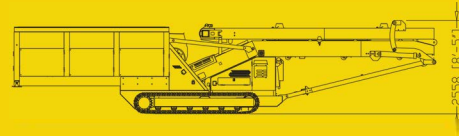
ANACONDA

FTR150 Tracked Feeder Conveyor

WORKING



TRANSPORT



ANACONDA SELLS AND DISTRIBUTES THE FULL RANGE OF EQUIPMENT THROUGH A LOCAL DEALER NETWORK. FOR YOUR NEAREST DEALER PLEASE CONTACT US OR VISIT OUR WEBSITE.

ANACONDA MANUFACTURES A WIDE RANGE OF **MOBILE SCREENS** AND **TRACKED/RADIAL WHEEL CONVEYORS** DESIGNED TO WORK IN CONJUNCTION WITH ANACONDA SCREENERS AS WELL AS MOST OTHER CRUSHING & SCREENING PLANTS.

DEALER STAMP HERE

ANACONDA **TRACKED** FEEDER CONVEYORS