

**PALLETS**



**DURATECH**

**HD 8 WHIRLWIND**

Industrial Tub Grinder

**BARK**



**r o c k**

**CONSTRUCTION DEBRIS**

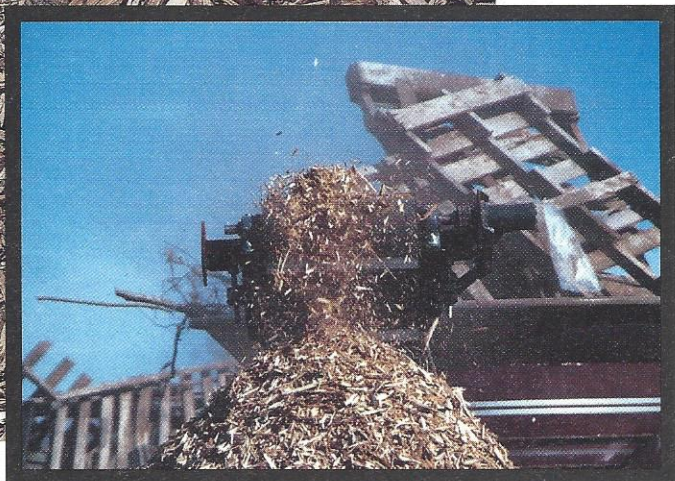
**t r e e s**

**c a r d b o a r d**

**WASTE WOOD**

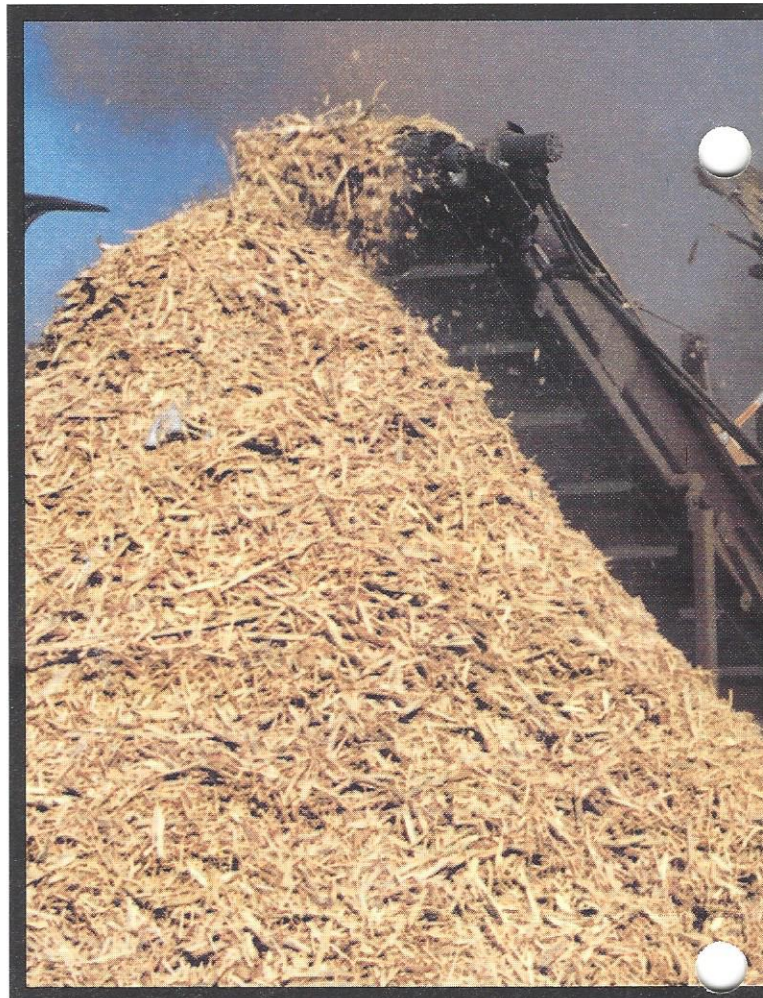
**s h e e t**





DuraTech International's state-of-the-art tub grinders can be found anywhere...from disaster clean up areas to uncleared construction sites. And with each job they're creating value-added products while recycling organic waste into reusable by-products. Whether providing an alternative for timber disposal or grinding stumps and trees, DuraTech is proud of their increasingly prominent role in assuring emptier landfills and cleaner skies for everyone.

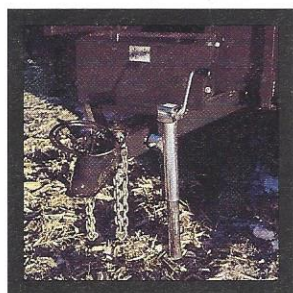
DuraTech...clearing the way for a better tomorrow.



Grinding pallets into wood chips at a 10:1 volume reduction ratio.

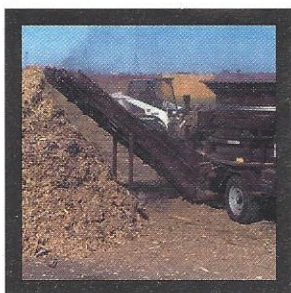
port

## features



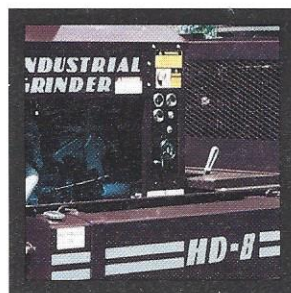
**feature**  
2 5/16" ball hitch.

**benefit**  
Allows complete towability with standard 3/4 ton truck.



**feature**  
10' discharge conveyor.

**benefit**  
Allows the machine to stack material to a height of 8'. Conveyor swivels easily for transportation.



**feature**  
Full instrumentation panel on engine.

**benefit**  
Allows operator to monitor engine status from one central location while operating machine.



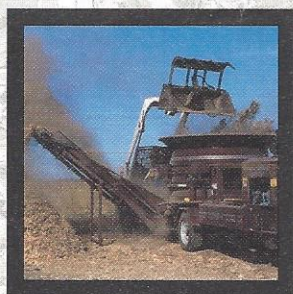
**feature**  
Electro/hydraulic sensing governor.

**benefit**  
Material feed is electronically controlled for optimum grinding efficiency. Tub speed rotation varies, based on conditions and load.





## able grinding power...HD 8 Whirlwind

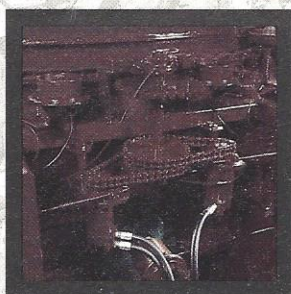


### feature

6'11" loading height.

### benefit

Allows machine to be loaded by either bucket or skid steer loader.



### feature

Non-slip hydraulic drive chain.

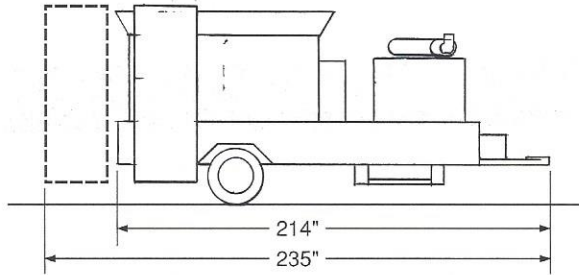
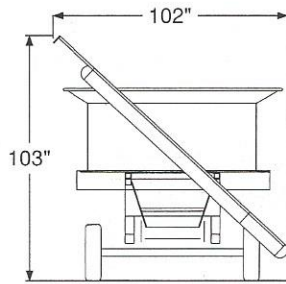
### benefit

Allows tub to rotate without slippage in drive line when heavy material is loaded.

The HD 8 Whirlwind industrial tub grinder is the smallest DuraTech offers and can be easily towed by a 3/4 ton pickup with its 2 5/16" ball hitch. Ideal for grinding tree limbs, yard waste, pallets, wood chips or demolition debris, the unit can be easily loaded with any skid steer loader. With an 8' tub, the Whirlwind offers a heavy-duty 26" long grinding hammermill. Its grinding cylinder is constructed of 3/4" hammers, 1/2" cylinder plates and a 3" cylinder shaft. Weighing 8,750 lbs., the unit is powered by a 110 hp, turbo-charged John Deere model 4039T diesel engine. The hydraulic discharge conveyor is 10' long to stack materials to a height of 8'.



## HD 8 WHIRLWIND



### OPTIONS

- Aluminum deflector chute
- Magnetic roller

## s p e c i f i c a t i o n s

### GENERAL SPECIFICATIONS

<b>Weight</b>	<b>8,750 lbs.</b>
Transport width	8'6" (102")
<b>Operating height</b>	<b>7'1" (85")</b>
Length in transport	19'7" (235")
<b>Height in transport</b>	<b>8'7" (103")</b>
Axle	8000 lb. single axle
<b>Axle tongue weight</b>	<b>500 lbs.</b>
Brakes	Electric
<b>Tires</b>	<b>(2) - 215 x 75R x 17.5</b>
Towing arrangement	2 5/16" ball hitch
<b>Fuel capacity</b>	<b>35 gallon (U.S.) fuel tank</b>
Hydraulic oil capacity	26 gallon (U.S.) oil tank
<b>Lights</b>	<b>Clearance and directional provided</b>
Governor	Electro-hydraulic sensing governor
<b>Engine</b>	<b>John Deere model 4039T, 110 hp diesel</b>

### TUB FEATURES

Tub width	7'8" - at the flare (46" deep)
<b>Depth</b>	<b>46"</b>
Tub diameter at base	6'
<b>Tub wall</b>	<b>3/16" thick</b>
Tub drive	Hydraulic orbit motor direct drive to chain
<b>Discharge conveyor</b>	<b>10' hydraulic top drive - 18" wide</b>
Belly conveyor	30" wide hydraulic end driven cleated belt
<b>Tub speed sensor</b>	<b>Electronic self-governing</b>
Safety switches	Safety shutdown

### HAMMERMILL

<b>Feed opening</b>	<b>27" x 23 3/4"</b>
Length	26"
<b>Anti-jam plate</b>	<b>5-tooth anti-slug plate installed above hammermill</b>
Cylinder plates	16" diameter 1/2" thick plates
<b>Cylinder shaft</b>	<b>3" stress proof steel</b>
Hammermill drive	Direct drive
<b>Bearings</b>	<b>2 3/4" pillow block bearings</b>
Hammers	(40) - 3/4" A.B. hardened swing hammers
<b>Hammer rods</b>	<b>15/16"(d) x 26"(l) case hardened rods</b>
Screens	Single screens 1/2" thick - available in various sized openings



Illustrations, specifications, and descriptions contained herein were accurate at time of publication, but are subject to change without notice. Illustrations may include optional equipment and accessories and may not include all standard equipment.

### DISTRIBUTED BY



PO BOX 1940  
JAMESTOWN, ND 58402-1940  
701-252-4601  
FAX: 701-252-0502

Printed in USA 5M395-8

